

Channeled Adhesive CI Design with SikaWall-1000 MaxGrip Veneer Adhesive

An exterior cladding system with a continuous air/water-resistive barrier and insulation, featuring SikaWall MaxGrip Veneer Adhesive, a high-strength, specially formulated setting bed mortar used to adhere natural and manufactured stone, tile, and thin brick veneer.

SYSTEM DESCRIPTION

Channeled Adhesive CI Design with MaxGrip Veneer Adhesive is a continuously insulated drainage wall cladding system. It features a Senershield fluid-applied air/water-resistive barrier, moisture drainage, continuous exterior insulation, and MaxGrip Veneer Mortar used to adhere natural and manufactured stone, tile, and thin brick veneer.

USES

Channeled Adhesive CI Design with MaxGrip Veneer Adhesive may be used in fire-resistance-rated construction and in any construction type (IBC Types I through V), when installed in accordance with Sika Facades System instructions.

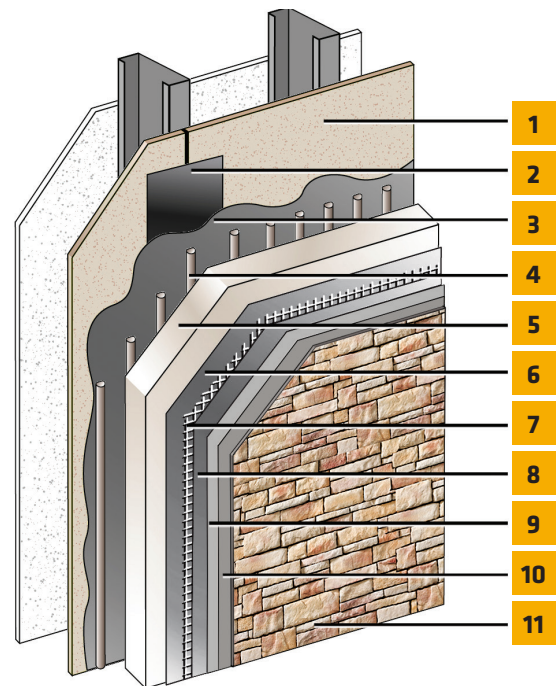
CODE COMPLIANCE

Document	Code Description
ICC-ESR 1878	Complies with 2018 and 2015 IBC and IRC
ASTM E2568 / AC 235	Complies with requirements
ASTM E119	Does not detract from fire rating of base wall
NFPA 285 and 268	Acceptable on noncombustible construction
ICC-ESR 2986 (Senershield-R/-RS)	Air/water-resistive barrier*
Air Barrier Association of America recognized (Senershield-R/-RS/-VB)	Can be used on projects where ABAA recognized air barriers are specified

*Senershield-R/-RS/-VB can be used behind all claddings where more than one wall system is specified, creating one continuous AWRB system. This is appropriate whenever Senergy Channeled Adhesive CI Design with MaxGrip Veneer Adhesive is used with other cladding types on a multi-clad building.

MATERIAL SUBSTITUTION

Material substitution will adversely affect system performance and will void all warranty coverage unless approved in writing by Sika Facades Technical Service Team.



1. Acceptable substrates**:
PermaBase® Cement Board and other cement boards conforming with ASTM C1325 (Type A - exterior); poured concrete/unit masonry; ASTM C1177 type sheathings, including Weather Defense™ Platinum sheathing, GreenGlass® sheathing, eXPTM sheathing, GlasRoc® sheathing, Securock™ glass-mat sheathing, and DensGlass® exterior sheathing; DensElement (sheathing only), gypsum sheathing (ASTM C79/C1396); Exposure I or exterior plywood (Grade C/D or better); or Exposure I OSB; Huber Zip (sheathing only).
 2. Approved Joint Reinforcement: SikaWall MaxFlash or SikaWall Sheathing Fabric embedded in Senershield-R/-RS/-VB
 3. Senershield-R/-RS/-VB
 4. Senergy Adhesive
 5. Approved EPS Insulation Board
 6. Senergy Base Coat
 7. SikaWall Intermediate 12 Reinforcing Mesh
 8. Senergy Base Coat
 9. Skim Coat of SikaWall MaxGrip Veneer Adhesive
 10. SikaWall MaxGrip Veneer Adhesive
 11. Adhered Veneer**
- ** (By Other)

Channeled Adhesive CI Design with MaxGrip Veneer Adhesive

LIMITATIONS

- For use on above grade vertical walls. System must terminate a minimum of 8" (200 mm) above grade.
- Additives are not permitted for any product unless approved in writing by Sika Facades Technical Service Team.
- All products must be installed at minimum 40 °F (4 °C) ambient and substrate temperatures unless otherwise noted on specific Product Data Sheets.
- Protect all work from precipitation for at least 24-hours after application.
- All products must be stored in accordance with specific instructions on relevant Product Data Sheets.
- All substrates must be clean, dry and sound without planar irregularities greater than 1/4" per 10' (6 mm per 3 m).

WARRANTY

Prior to each use of any product of Sika Corporation, its subsidiaries or affiliates ("SIKA"), the user must always read and follow the warnings and instructions on the product's most current product label, Product Data Sheet and Safety Data Sheet which are available at usa.sika.com/senergy or by calling Sika Facades' Technical Service Department at 1-800-589-1336. Nothing contained in any Sika literature or materials relieves the user of the obligation to read and follow the warnings and instructions for each Sika product as set forth in the current product label, Product Data Sheet and Safety Data Sheet prior to use of the Sika product.

SIKA warrants this product for one year from date of installation to be free from manufacturing defects and to meet the technical properties on the current Product Data Sheet if used as directed within the product's shelf life. User determines suitability of product for intended use and assumes all risks. User's and/or buyer's sole remedy shall be limited to the purchase price or replacement of this product exclusive of any labor costs. NO OTHER WARRANTIES EXPRESS OR IMPLIED SHALL APPLY INCLUDING ANY WARRANTY OF MERCHANTABILITY OR FITNESS FOR A PARTICULAR PURPOSE. SIKA SHALL NOT BE LIABLE UNDER ANY LEGAL THEORY FOR SPECIAL OR CONSEQUENTIAL DAMAGES. SIKA SHALL NOT BE RESPONSIBLE FOR THE USE OF THIS PRODUCT IN A MANNER TO INFRINGE ON ANY PATENT OR ANY OTHER INTELLECTUAL PROPERTY RIGHTS HELD BY OTHERS. Sale of Sika products are subject to the Terms and Conditions of Sale which are available at usa.sika.com.

Sika Corporation

201 Polito Avenue
Lyndhurst, NJ 07071 USA
Customer Service +1 (800) 433-9517
Technical Service +1 (800) 589-1336
usa.sika.com/senergy

Rev April 2024

BUILDING TRUST

