

Senergy[®]



Sentry Stucco Ultra Wall System

Premium Impact and Puncture Resistant, Rain
Screen Design Cement Plaster Stucco System with
Enhanced Water Management

Typical Details

BUILDING TRUST



Sentry Stucco Ultra Wall System

Typical Details

Table of Contents

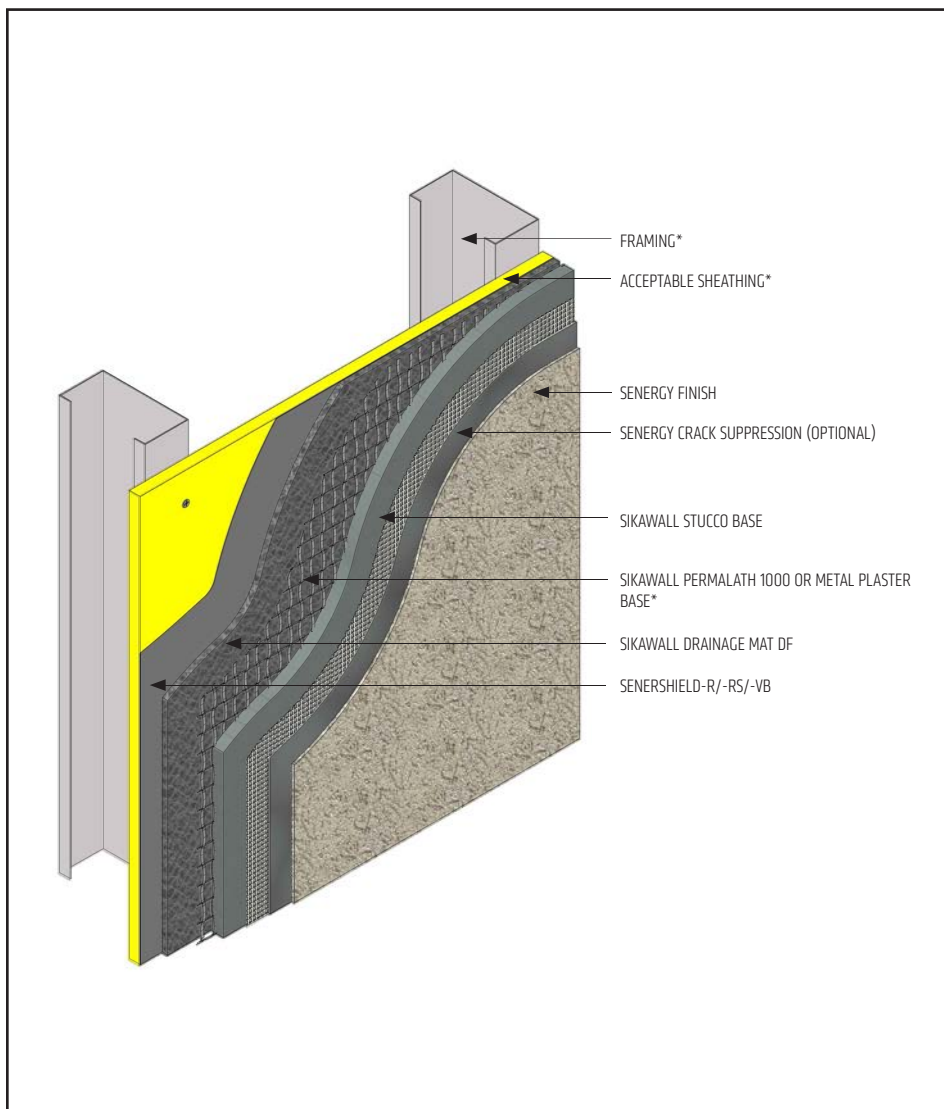
- | | |
|---|---------------------------------------|
| 1. Sentry Stucco Ultra Wall System with Steel Framing | 13. EPS Shape Application |
| 2. Sentry Stucco Ultra Wall System with Wood Framing | 14. Termination at Soffit / Gable End |
| 3. Sentry Stucco Ultra Wall System with CMU | 15. Termination at Foundation |
| 4. Surface Control Joint | 16. Kick-out Flashing |
| 5. Expansion Joint | 17. Termination at Deck |
| 6. Drainage at Floorline | 18. Coping |
| 7. Clad Window Jamb | 19. Corner Bead |
| 8. Clad Window Head | 20. Downspout Application |
| 9. Clad Window Sill | 21. Pipe Penetration |
| 10. Primed Window Head | 22. Light Fixture |
| 11. Primed Window Jamb | 23. Dryer Vent |
| 12. Primed Window Sill | |

Notes:

- **The details within are the latest recommendations and are represent in good faith by Sika Corporation US (hereinafter Sika). The details are subject to change without notice. Sika accepts no liability for the end use of the details. For conditions not shown, consult Sika for review of specific details.**
- **Install Sika materials in accordance with current installation instructions.**
- **Unsatisfactory conditions shall be reported to the General Contractor and corrected before the application of Sika products.**

Sentry Stucco Ultra Wall System

TYPICAL SENTRY STUCCO ULTRA WALL SYSTEM WITH STEEL FRAMING



- Ensure Senersshield-R/-RS/-VB is dry prior to SikaWall Drainage Mat DF installation.
- Install SikaWall Drainage Mat DF with the fabric side facing out.

SSU-01 2404

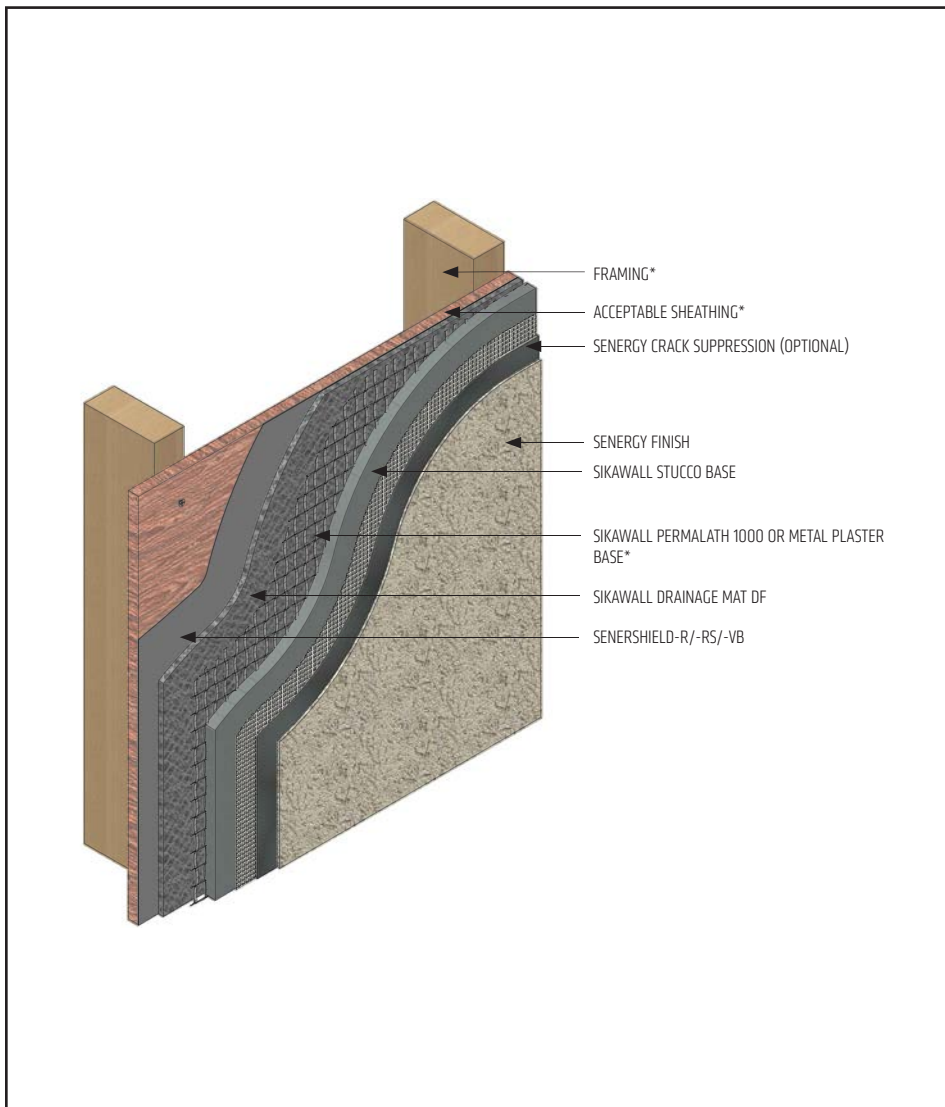
(*NOTE: BY OTHERS)

The details within are latest recommendations and are represent in good faith by Sika Corporation US (hereinafter Sika). The details are subject to change without notice. Sika accepts no liability for the end use of the details. For conditions not shown, consult Sika for review of specific details.

- Install Sika materials in accordance with current installation instructions.
- Unsatisfactory conditions shall be reported to the General Contractor and corrected before the application of Sika products.

Sentry Stucco Ultra Wall System

TYPICAL SENTRY STUCCO ULTRA WALL SYSTEM WITH WOOD FRAMING



- Wood based sheathing requires two coats of Senershield-R/-RS/-VB. It can be sprayed to a 20-22 mil thickness in one wet application.
- Ensure Senershield-R/-RS/-VB is dry prior to SikaWall Drainage Mat DF installation.
- Install SikaWall Drainage Mat DF with the fabric side facing out.
- Senergy Crack Suppression: Flexguard 4 or SikaWall SRT Mesh embedded in Senergy Base Coat or SikaWall Stucco Surface Leveler.

SSU-02 2404

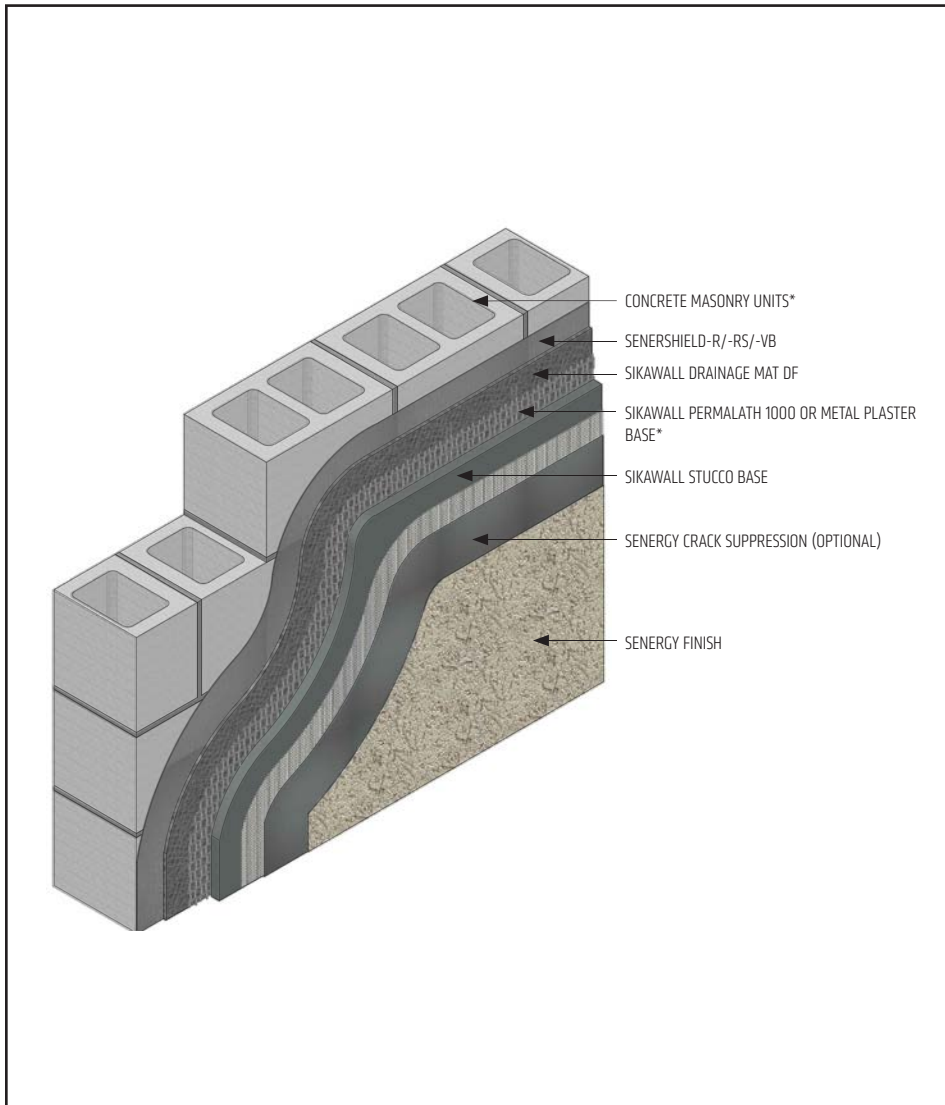
(*NOTE: BY OTHERS)

The details within are latest recommendations and are represent in good faith by Sika Corporation US (hereinafter Sika). The details are subject to change without notice. Sika accepts no liability for the end use of the details. For conditions not shown, consult Sika for review of specific details.

- Install Sika materials in accordance with current installation instructions.
- Unsatisfactory conditions shall be reported to the General Contractor and corrected before the application of Sika products.

Sentry Stucco Ultra Wall System

TYPICAL SENTRY STUCCO ULTRA WALL SYSTEM WITH CMU



- Multiple coats of Senershield-R/-RS/-VB may be required to achieve a pin-hole free application.
- Ensure Senershield-R/-RS/-VB is dry prior to SikaWall Drainage Mat DF installation.
- Install SikaWall Drainage Mat DF with the fabric side facing out.
- Senergy Crack Suppression: Flexguard 4 or SikaWall SRT Mesh embedded in Senergy Base Coat or SikaWall Stucco Surface Leveler.

SSU-03 2404

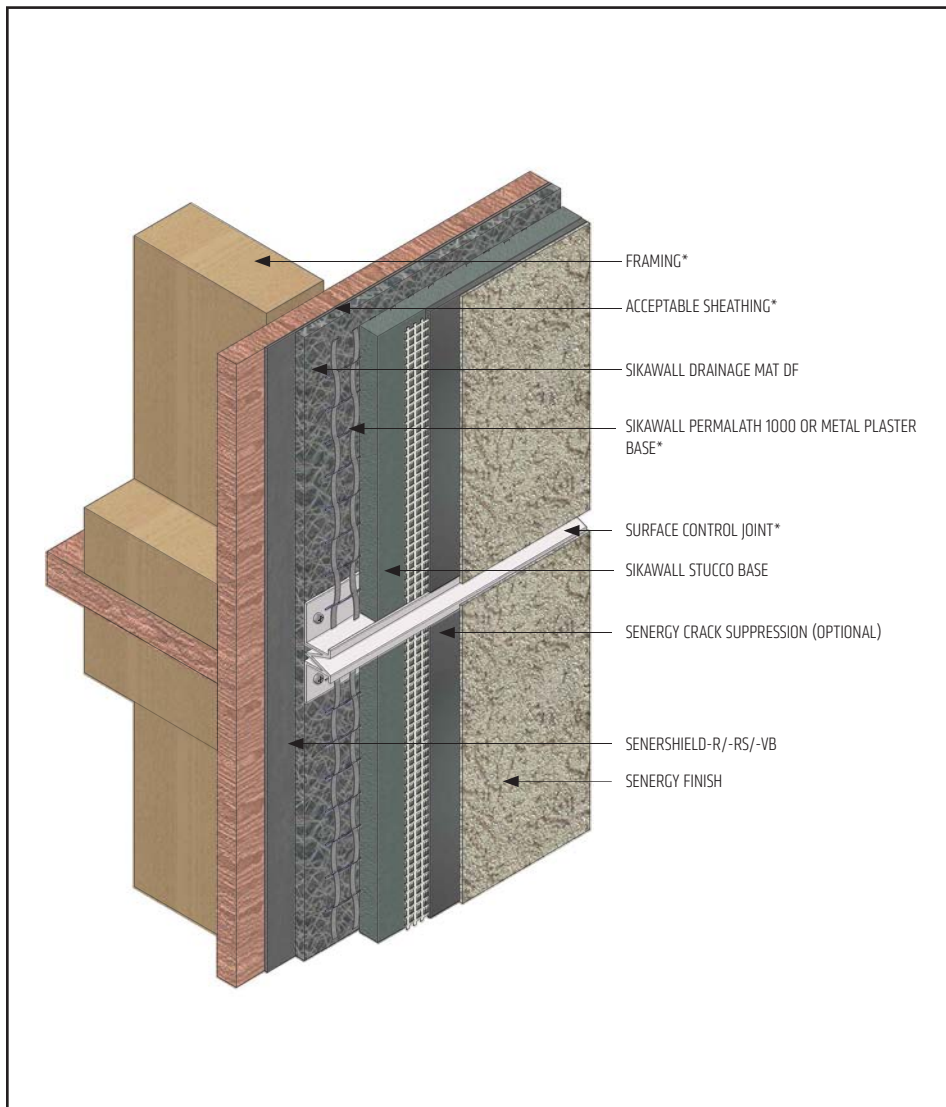
(*NOTE: BY OTHERS)

The details within are latest recommendations and are represent in good faith by Sika Corporation US (hereinafter Sika). The details are subject to change without notice. Sika accepts no liability for the end use of the details. For conditions not shown, consult Sika for review of specific details.

- Install Sika materials in accordance with current installation instructions.
- Unsatisfactory conditions shall be reported to the General Contractor and corrected before the application of Sika products.

Sentry Stucco Ultra Wall System

TYPICAL SURFACE CONTROL JOINT



- Provide control joints at a maximum 144 sq. ft. (13.4 sq. m.) and placement as determined by the design professional.
- Install per requirements of ASTM C1063.
- Lath must be broken at the joint accessory.
- Senergy Crack Suppression: Flexguard 4 or SikaWall SRT Mesh embedded in Senergy Base Coat or SikaWall Stucco Surface Leveler.

SSU-04 2404

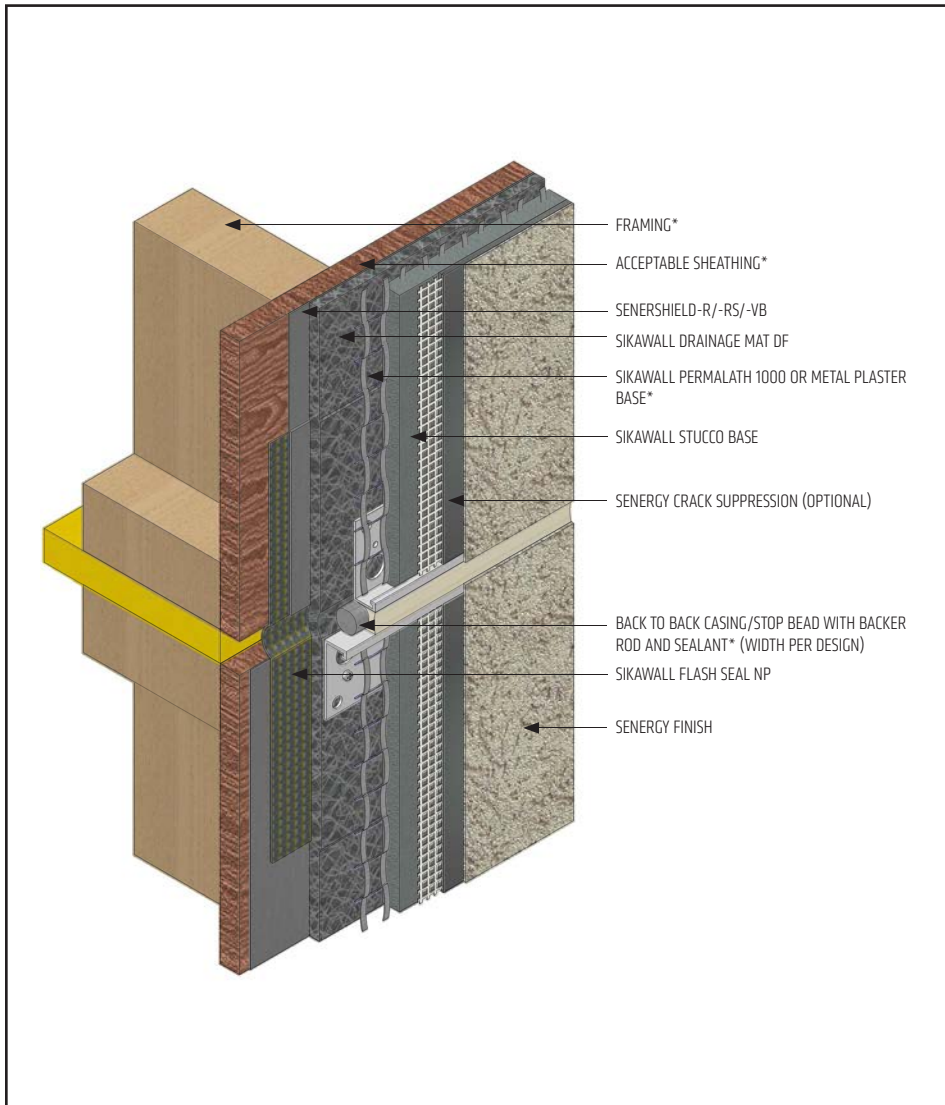
(*NOTE: BY OTHERS)

The details within are latest recommendations and are represent in good faith by Sika Corporation US (hereinafter Sika). The details are subject to change without notice. Sika accepts no liability for the end use of the details. For conditions not shown, consult Sika for review of specific details.

- Install Sika materials in accordance with current installation instructions.
- Unsatisfactory conditions shall be reported to the General Contractor and corrected before the application of Sika products.

Sentry Stucco Ultra Wall System

TYPICAL EXPANSION JOINT



SSU-05 2404

(*NOTE: BY OTHERS)

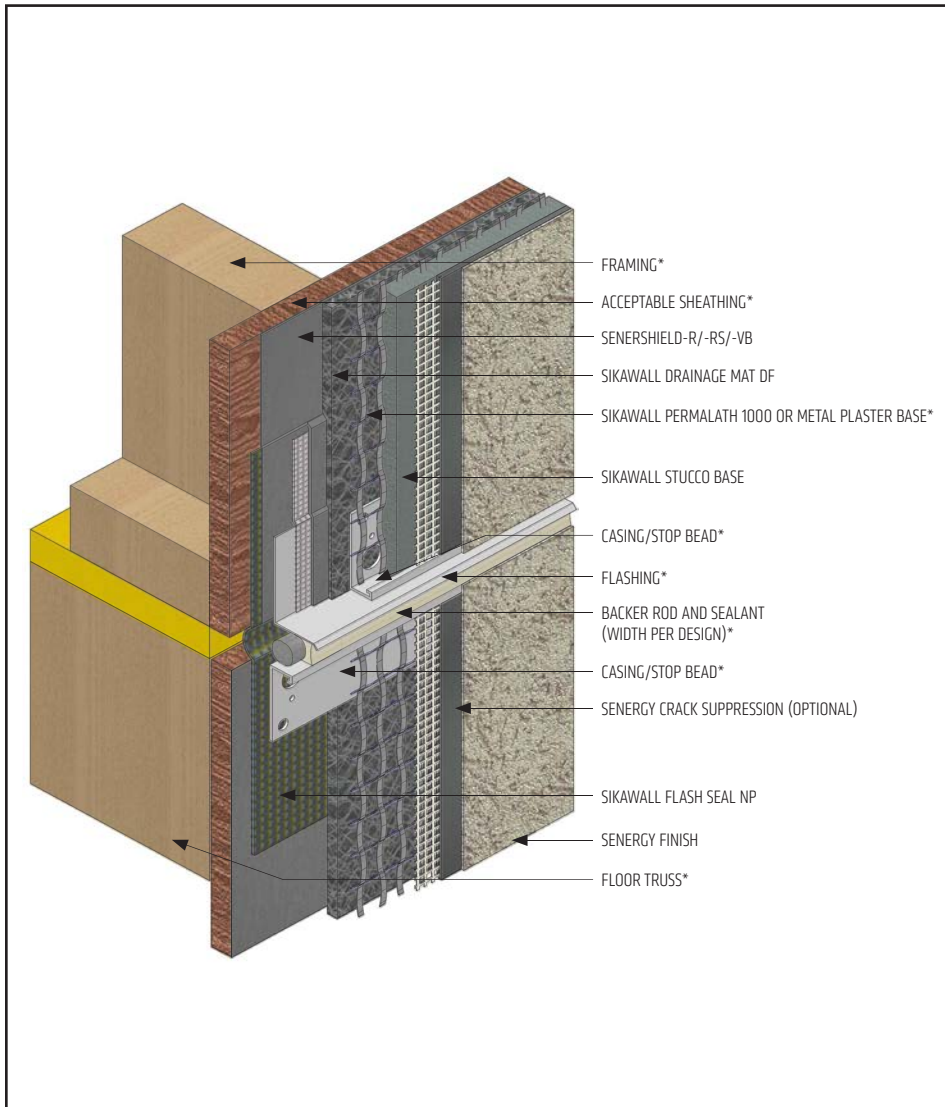
- Install expansion joints in the system at all changes in substrate, through existing expansion joints, and where movement is anticipated. It is the sole responsibility of the design professional to determine specific expansion joint location, placement and design.
- Install per requirements of ASTM C1063.
- Lath must be broken at the joint accessory.
- Senergy Crack Suppression: Flexguard 4 or SikaWall SRT Mesh embedded in Senergy Base Coat or SikaWall Stucco Surface Leveler.

The details within are latest recommendations and are represent in good faith by Sika Corporation US (hereinafter Sika). The details are subject to change without notice. Sika accepts no liability for the end use of the details. For conditions not shown, consult Sika for review of specific details.

- Install Sika materials in accordance with current installation instructions.
- Unsatisfactory conditions shall be reported to the General Contractor and corrected before the application of Sika products.

Sentry Stucco Ultra Wall System

TYPICAL DRAINAGE AT FLOORLINE



- Senershield-R/-RS/-VB shall be installed over flashing.
- Provide end-dams at flashing terminations as required.
- Lath must be broken at the joint accessory.
- It is recommended that a means for drainage is provided at every floor.
- Senergy Crack Suppression: Flexguard 4 or SikaWall SRT Mesh embedded in Senergy Base Coat or SikaWall Stucco Surface Leveler.

SSU-06 2404

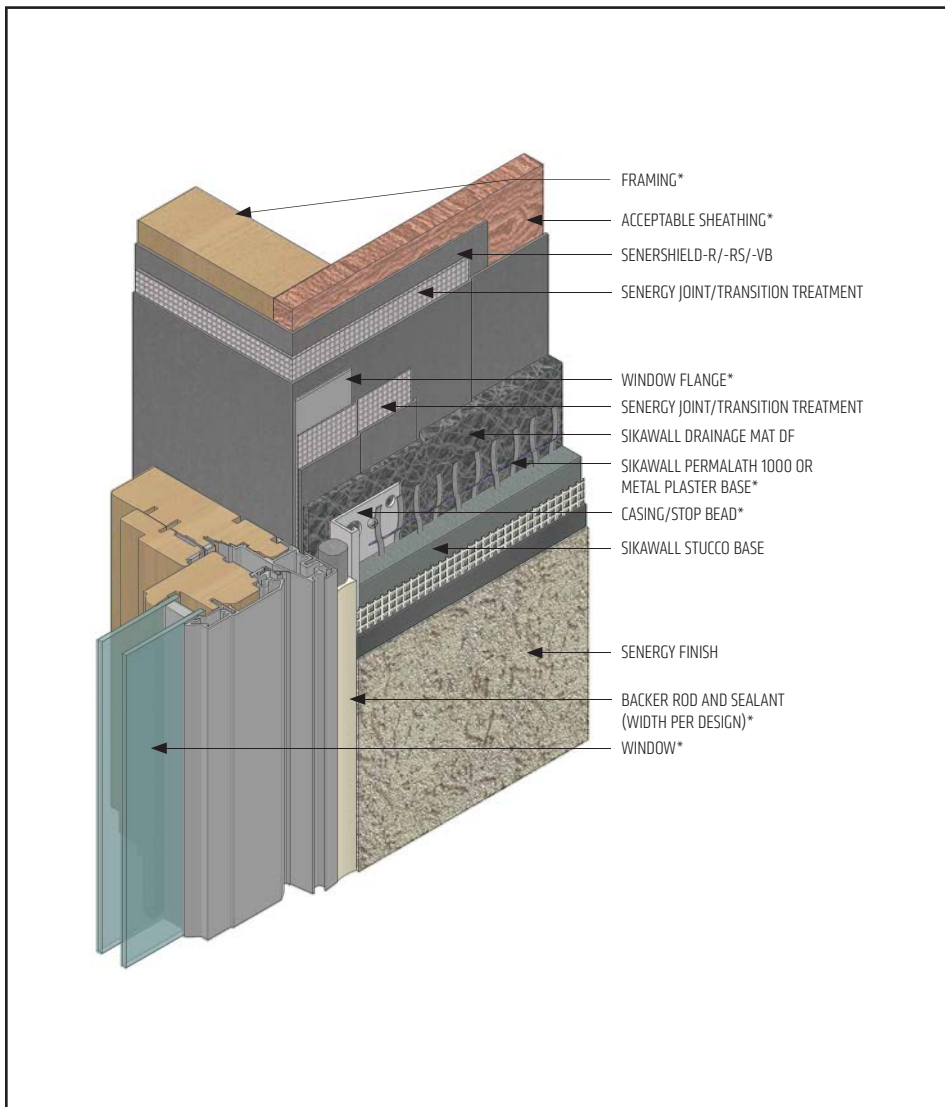
(*NOTE: BY OTHERS)

The details within are latest recommendations and are represent in good faith by Sika Corporation US (hereinafter Sika). The details are subject to change without notice. Sika accepts no liability for the end use of the details. For conditions not shown, consult Sika for review of specific details.

- Install Sika materials in accordance with current installation instructions.
- Unsatisfactory conditions shall be reported to the General Contractor and corrected before the application of Sika products.

Sentry Stucco Ultra Wall System

TYPICAL CLAD WINDOW - JAMB



- Ensure Senershield-R/-RS/-VB is properly applied into the rough openings in accordance with application guidelines. Reference published Senershield Details for additional information.
- Senergy Joint/Transition Treatment Options: SikaWall MaxFlash, SikaWall Sheathing Fabric embedded in Senershield-R/-RS/-VB or SikaWall Flash Seal NP.

SSU-07 2404

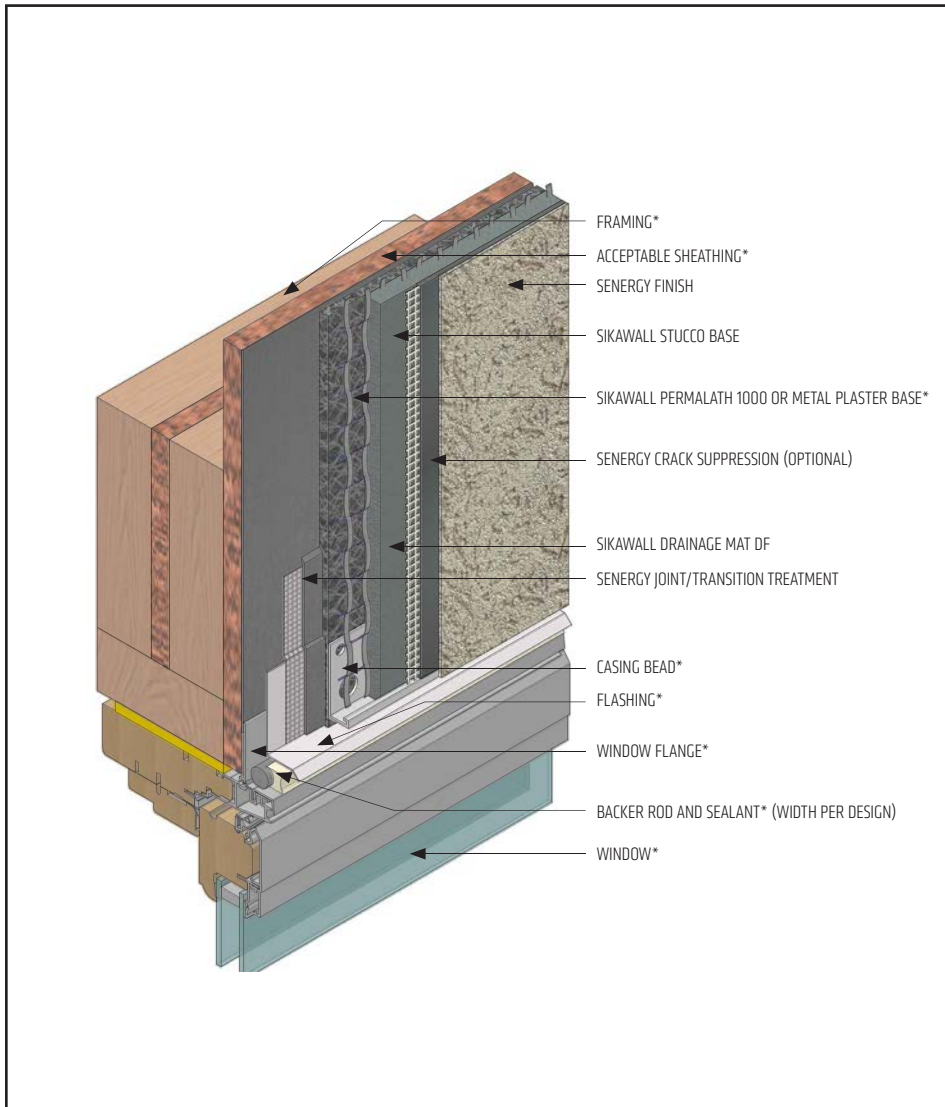
(*NOTE: BY OTHERS)

The details within are latest recommendations and are represent in good faith by Sika Corporation US (hereinafter Sika). The details are subject to change without notice. Sika accepts no liability for the end use of the details. For conditions not shown, consult Sika for review of specific details.

- Install Sika materials in accordance with current installation instructions.
- Unsatisfactory conditions shall be reported to the General Contractor and corrected before the application of Sika products.

Sentry Stucco Ultra Wall System

TYPICAL CLAD WINDOW - HEAD



- Ensure Senersshield-R/-RS/-VB is properly applied over the head flashing.
- Provide end-dams at flashing terminations.
- Senergy Joint/Transition Treatment Options: SikaWall MaxFlash, SikaWall Sheathing Fabric embedded in Senersshield-R/-RS/-VB or SikaWall Flash Seal NP.
- Senergy Crack Suppression: Flexguard 4 or SikaWall SRT Mesh embedded in Senergy Base Coat or SikaWall Stucco Surface Leveler.

SSU-08 2404

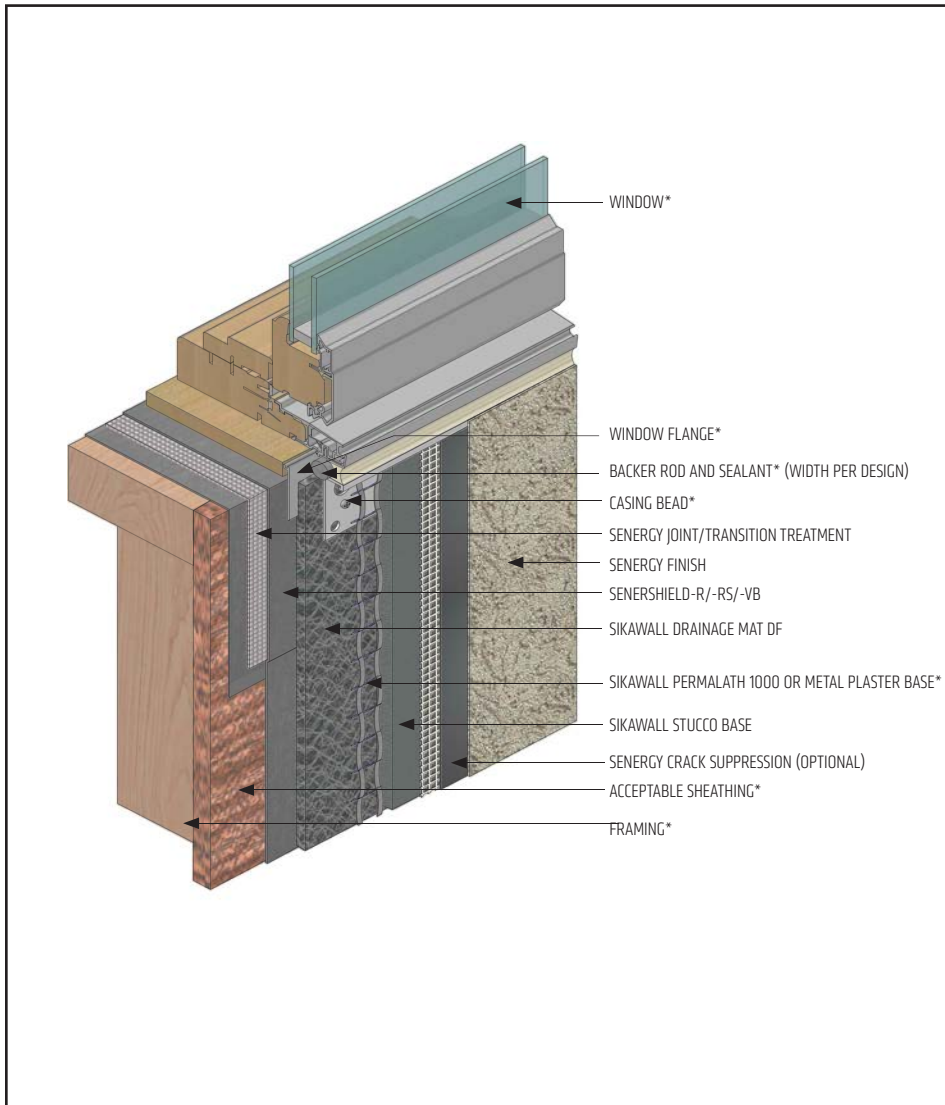
(*NOTE: BY OTHERS)

The details within are latest recommendations and are represent in good faith by Sika Corporation US (hereinafter Sika). The details are subject to change without notice. Sika accepts no liability for the end use of the details. For conditions not shown, consult Sika for review of specific details.

- Install Sika materials in accordance with current installation instructions.
- Unsatisfactory conditions shall be reported to the General Contractor and corrected before the application of Sika products.

Sentry Stucco Ultra Wall System

TYPICAL CLAD WINDOW - SILL



- Ensure Senersshield-R/-RS/-VB is properly applied into the rough openings in accordance with application guidelines. Reference published Senersshield Details for additional information.
- Senergy Crack Suppression: Flexguard 4 or SikaWall SRT Mesh embedded in Senergy Base Coat or SikaWall Stucco Surface Leveler.
- Senergy Joint/Transition Treatment Options: SikaWall MaxFlash, SikaWall Sheathing Fabric embedded in Senersshield-R/-RS/-VB or SikaWall Flash Seal NP.

SSU-09 2404

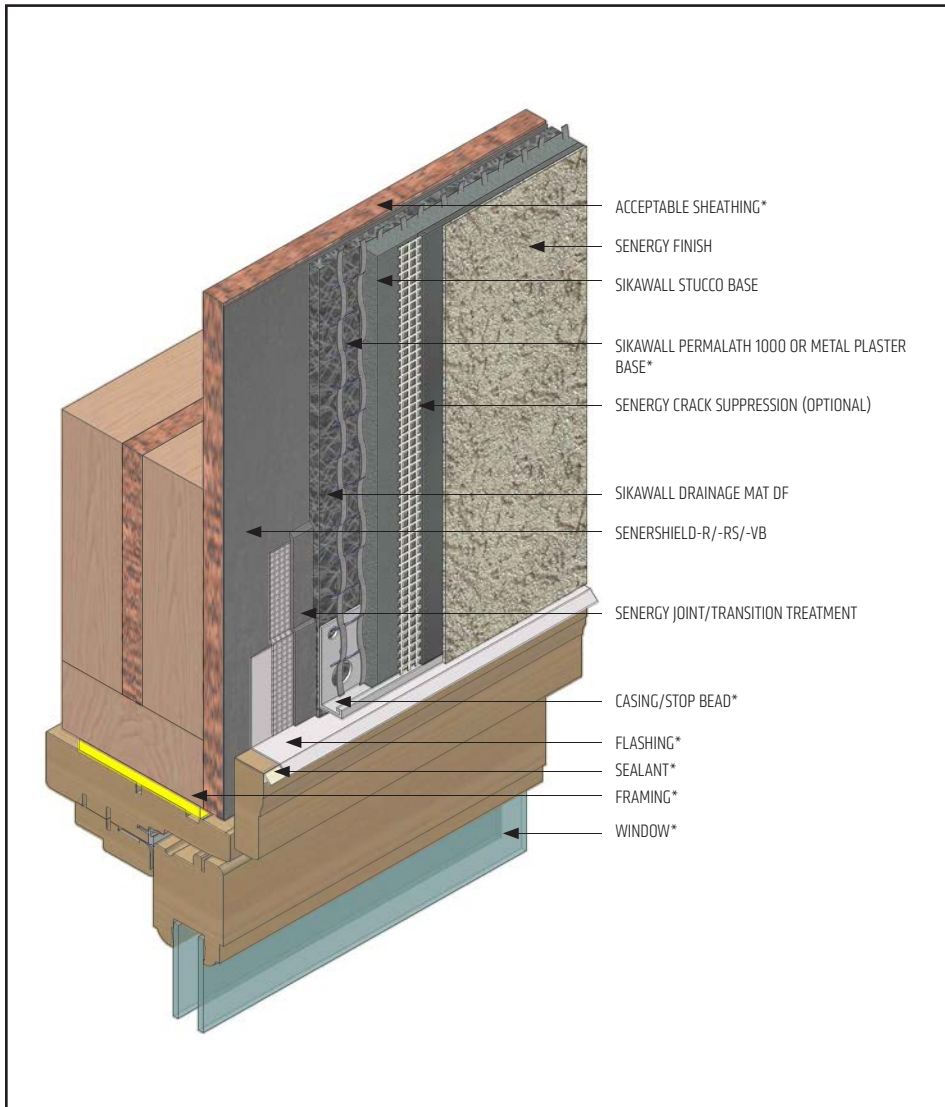
(*NOTE: BY OTHERS)

The details within are latest recommendations and are represent in good faith by Sika Corporation US (hereinafter Sika). The details are subject to change without notice. Sika accepts no liability for the end use of the details. For conditions not shown, consult Sika for review of specific details.

- Install Sika materials in accordance with current installation instructions.
- Unsatisfactory conditions shall be reported to the General Contractor and corrected before the application of Sika products.

Sentry Stucco Ultra Wall System

TYPICAL PRIMED WINDOW - HEAD



- Ensure Senersshield-R/-RS/-VB is properly applied over the head flashing.
- Provide end-dams at flashing terminations.
- Senergy Joint/Transition Treatment Options: SikaWall MaxFlash, SikaWall Sheathing Fabric embedded in Senersshield-R/-RS/-VB or SikaWall Flash Seal NP.
- Senergy Crack Suppression: Flexguard 4 or SikaWall SRT Mesh embedded in Senergy Base Coat or SikaWall Stucco Surface Leveler.

SSU-10 2404

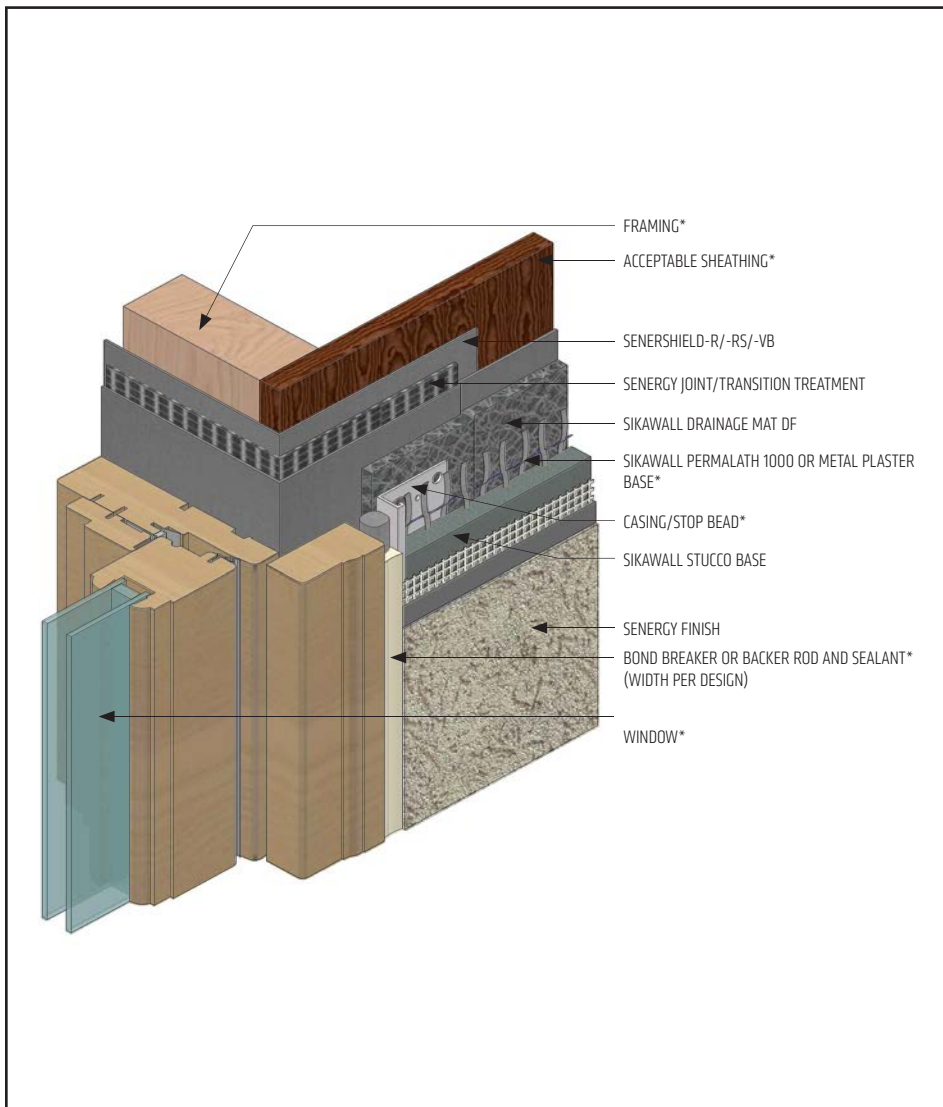
(*NOTE: BY OTHERS)

The details within are latest recommendations and are represent in good faith by Sika Corporation US (hereinafter Sika). The details are subject to change without notice. Sika accepts no liability for the end use of the details. For conditions not shown, consult Sika for review of specific details.

- Install Sika materials in accordance with current installation instructions.
- Unsatisfactory conditions shall be reported to the General Contractor and corrected before the application of Sika products.

Sentry Stucco Ultra Wall System

TYPICAL PRIMED WINDOW - JAMB



- Ensure Senersshield-R/-RS/-VB is properly applied into the rough openings.
- Senergy Joint/Transition Treatment Options: SikaWall MaxFlash, SikaWall Sheathing Fabric embedded in Senersshield-R/-RS/-VB or SikaWall Flash Seal NP.

SSU-11 2404

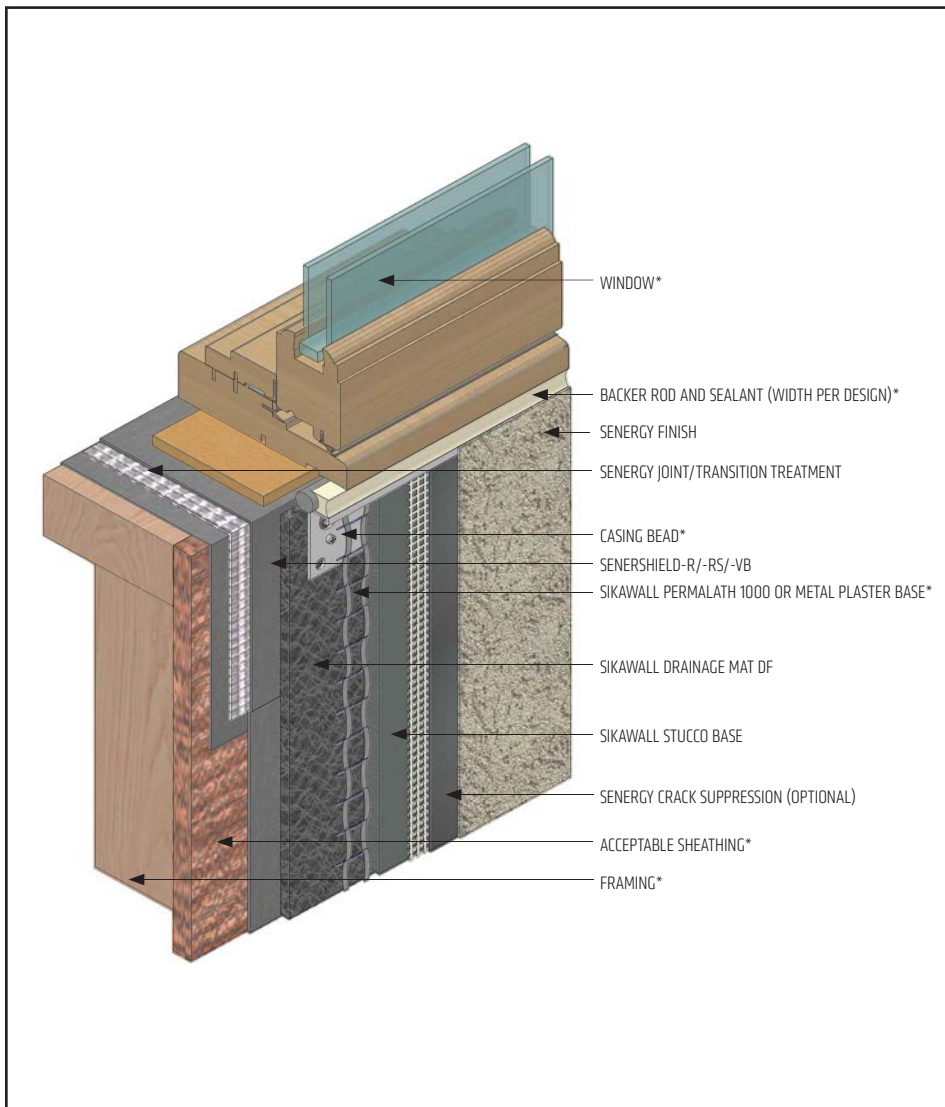
(*NOTE: BY OTHERS)

The details within are latest recommendations and are represent in good faith by Sika Corporation US (hereinafter Sika). The details are subject to change without notice. Sika accepts no liability for the end use of the details. For conditions not shown, consult Sika for review of specific details.

- Install Sika materials in accordance with current installation instructions.
- Unsatisfactory conditions shall be reported to the General Contractor and corrected before the application of Sika products.

Sentry Stucco Ultra Wall System

TYPICAL PRIMED WINDOW - SILL



- Ensure Senersshield-R/-RS/-VB is properly applied into the rough openings in accordance with application guidelines. Reference published Senersshield Details for additional information.
- Senergy Crack Suppression: Flexguard 4 or SikaWall SRT Mesh embedded in Senergy BaseCoat or SikaWall Stucco Surface Leveler
- Senergy Joint/Transition Treatment
Options: SikaWall MaxFlash, SikaWall Sheathing Fabric embedded in Senersshield-R/-RS/-VB or SikaWall Flash Seal NP.

SSU-12 2404

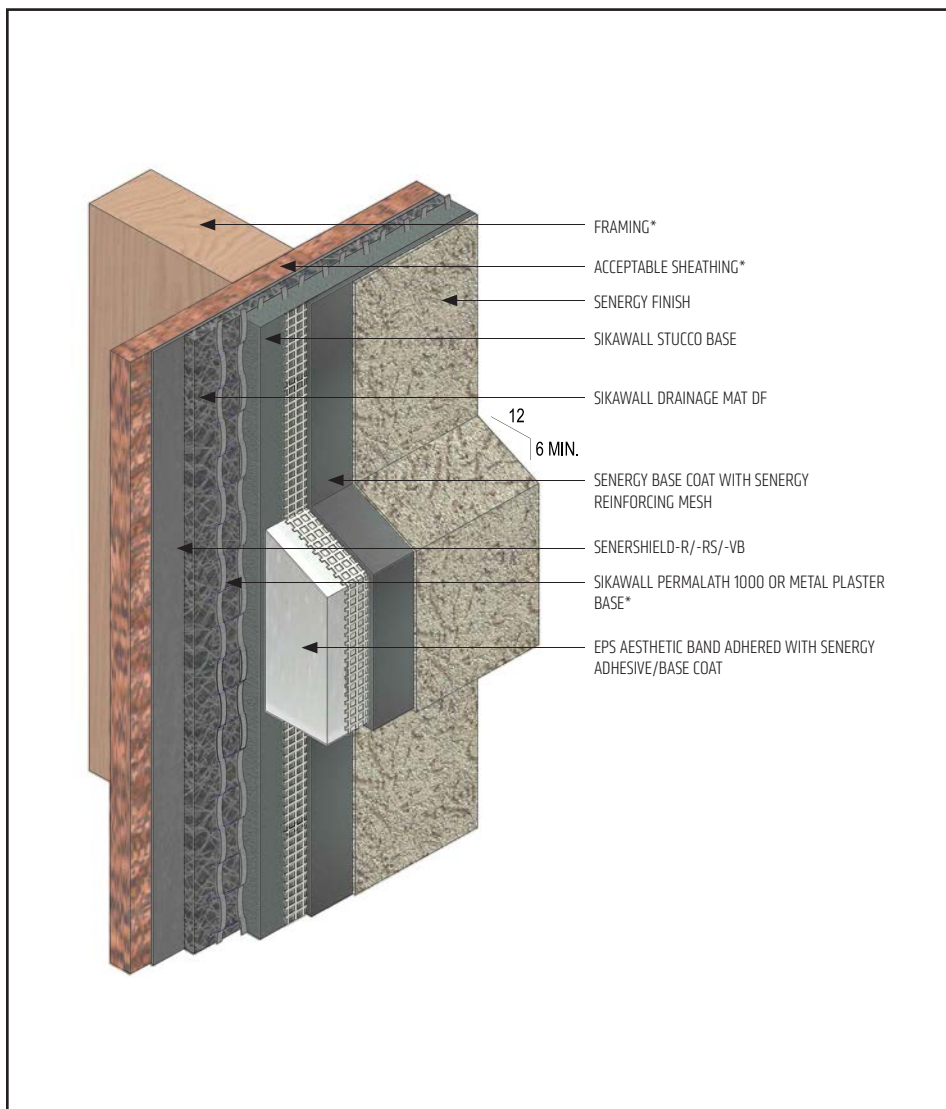
(*NOTE: BY OTHERS)

The details within are latest recommendations and are represent in good faith by Sika Corporation US (hereinafter Sika). The details are subject to change without notice. Sika accepts no liability for the end use of the details. For conditions not shown, consult Sika for review of specific details.

- Install Sika materials in accordance with current installation instructions.
- Unsatisfactory conditions shall be reported to the General Contractor and corrected before the application of Sika products.

Sentry Stucco Ultra Wall System

TYPICAL EPS SHAPE APPLICATION



- Overlap reinforced base coat onto SikaWall Stucco Base a minimum of 3" (76 mm).
- On horizontal projections greater than one inch maintain a minimum 6:12 slope.

SSU-13 2404

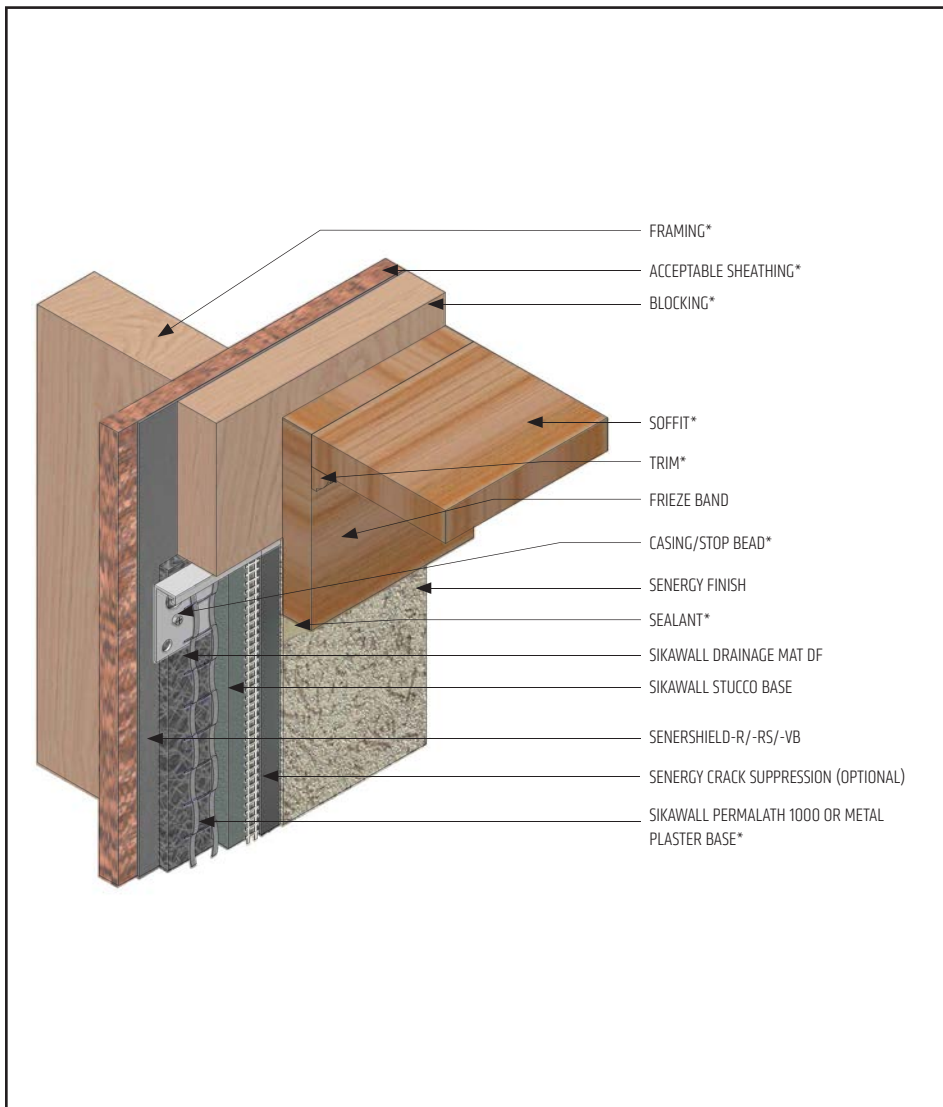
(*NOTE: BY OTHERS)

The details within are latest recommendations and are represent in good faith by Sika Corporation US (hereinafter Sika). The details are subject to change without notice. Sika accepts no liability for the end use of the details. For conditions not shown, consult Sika for review of specific details.

- Install Sika materials in accordance with current installation instructions.
- Unsatisfactory conditions shall be reported to the General Contractor and corrected before the application of Sika products.

Sentry Stucco Ultra Wall System

TYPICAL TERMINATION AT SOFFIT/GABLE END



- Lap frieze band a minimum of 2" (50 mm) over the Sentry Stucco Ultra Wall System.
- Senergy Crack Suppression: Flexguard 4 or SikaWall SRT Mesh embedded in Senergy Base Coat or SikaWall Stucco Surface Leveler.

SSU-14 2404

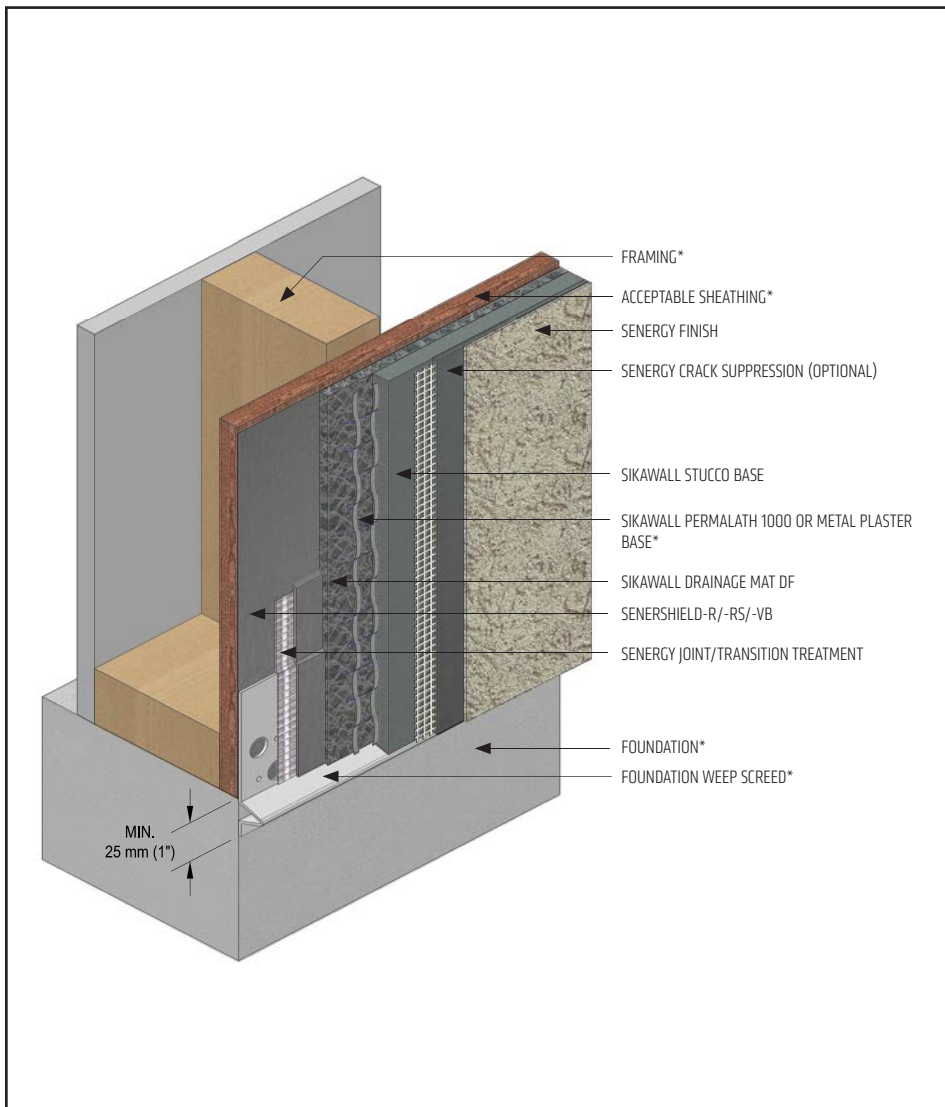
(*NOTE: BY OTHERS)

The details within are latest recommendations and are represent in good faith by Sika Corporation US (hereinafter Sika). The details are subject to change without notice. Sika accepts no liability for the end use of the details. For conditions not shown, consult Sika for review of specific details.

- Install Sika materials in accordance with current installation instructions.
- Unsatisfactory conditions shall be reported to the General Contractor and corrected before the application of Sika products.

Sentry Stucco Ultra Wall System

TYPICAL TERMINATION AT FOUNDATION



- Per ASTM C1063 terminate the stucco wall system a minimum of 4" (100 mm) above raw earth and 2" (50 mm) above paved surface.
- Senergy Joint/Transition Treatment Options: SikaWall MaxFlash, SikaWall Sheathing Fabric embedded in Senershield-R/-RS/-VB or SikaWall Flash Seal NP.
- Senergy Crack Suppression: Flexguard 4 or SikaWall SRT Mesh embedded in Senergy Base Coat or SikaWall Stucco Surface Leveler.

SSU-15 2404

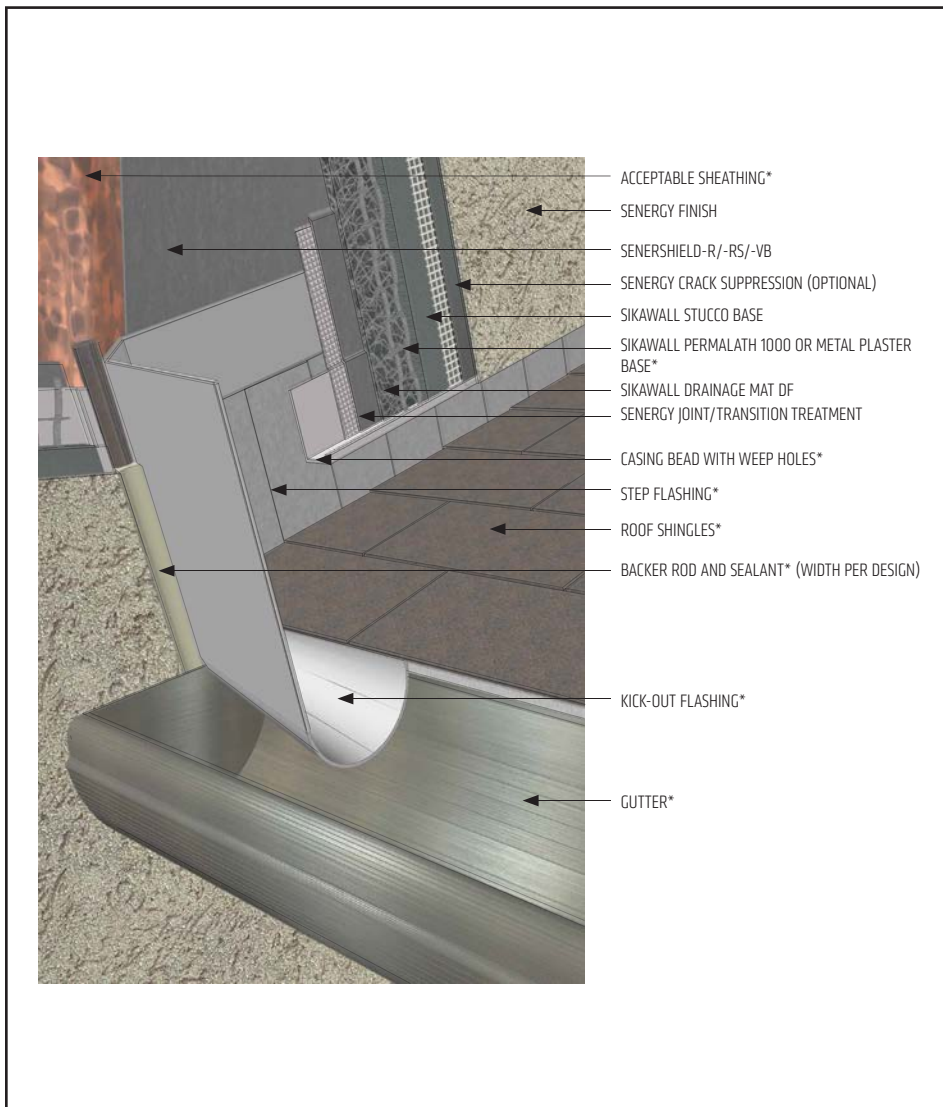
(*NOTE: BY OTHERS)

The details within are latest recommendations and are represent in good faith by Sika Corporation US (hereinafter Sika). The details are subject to change without notice. Sika accepts no liability for the end use of the details. For conditions not shown, consult Sika for review of specific details.

- Install Sika materials in accordance with current installation instructions.
- Unsatisfactory conditions shall be reported to the General Contractor and corrected before the application of Sika products.

Sentry Stucco Ultra Wall System

TYPICAL KICK-OUT FLASHING



- Terminate Sentry Stucco Ultra Wall System a minimum of 2" (50 mm) above sloped roof.
- Ensure step flashing is a minimum 2" (50 mm) behind Sentry Stucco Ultra Wall System.
- Kick-out flashing a minimum 4" (100 mm) in height.
- Kick-out flashing shall be angled a minimum 100° with seams sealed or soldered.
- Ensure a means for drainage is provided at system termination at roof.
- Senergy Joint/Transition Treatment Options: SikaWall MaxFlash, SikaWall Sheathing Fabric embedded in Senershield-R/-RS/-VB or SikaWall Flash Seal NP.
- Senergy Crack Suppression: Flexguard 4 or SikaWall SRT Mesh embedded in Senergy Base Coat or SikaWall Stucco Surface Leveler.

SSU-16 2404

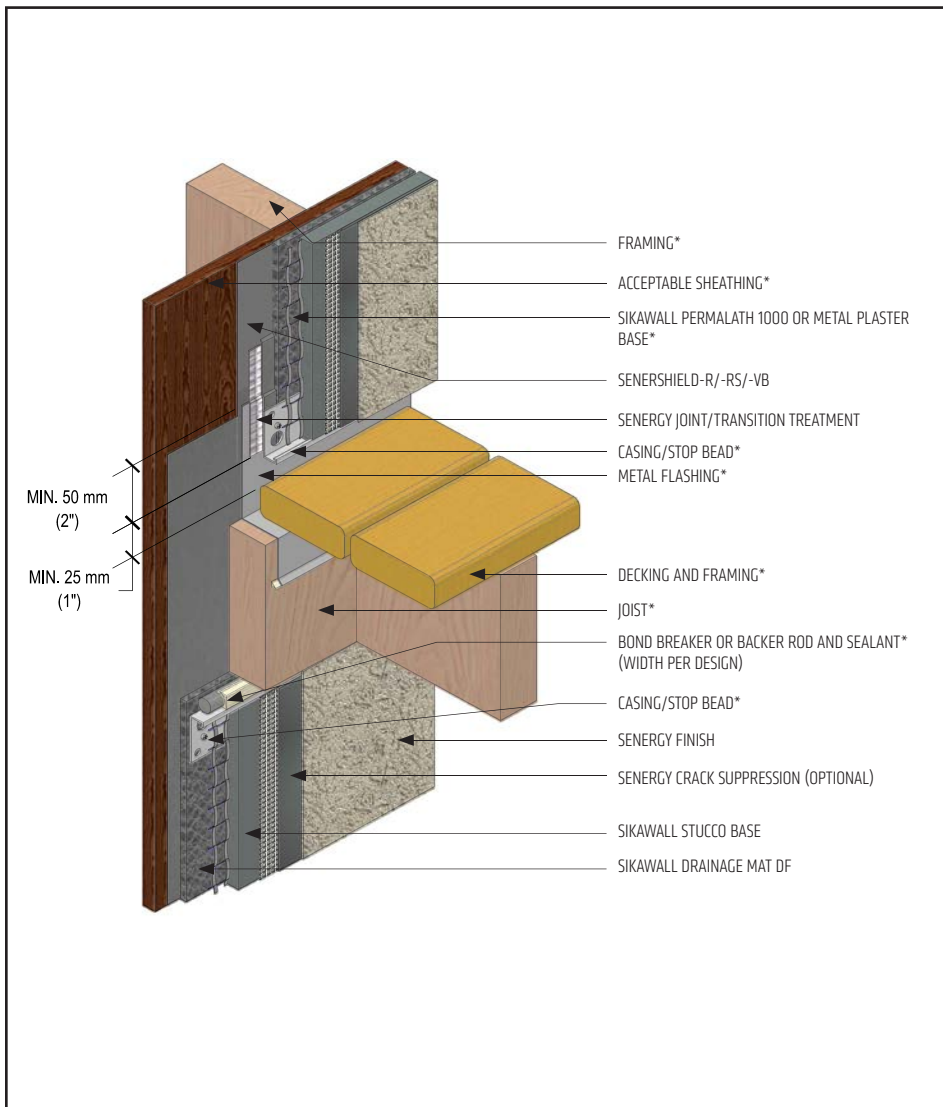
(*NOTE: BY OTHERS)

The details within are latest recommendations and are represent in good faith by Sika Corporation US (hereinafter Sika). The details are subject to change without notice. Sika accepts no liability for the end use of the details. For conditions not shown, consult Sika for review of specific details.

- Install Sika materials in accordance with current installation instructions.
- Unsatisfactory conditions shall be reported to the General Contractor and corrected before the application of Sika products.

Sentry Stucco Ultra Wall System

TYPICAL TERMINATION AT DECK



- Senershield-R/-RS/-VB shall be installed over flashing.
- Senershield-R/-RS/-VB shall be installed up and behind metal flashing before terminating.
- Provide end-dams at flashing terminations as required.
- Senergy Joint/Transition Treatment Options: SikaWall MaxFlash, SikaWall Sheathing Fabric embedded in Senershield-R/-RS/-VB or SikaWall Flash Seal NP.
- Senergy Crack Suppression: Flexguard 4 or SikaWall SRT Mesh embedded in Senergy Base Coat or SikaWall Stucco Surface Leveler.

SSU-17 2404

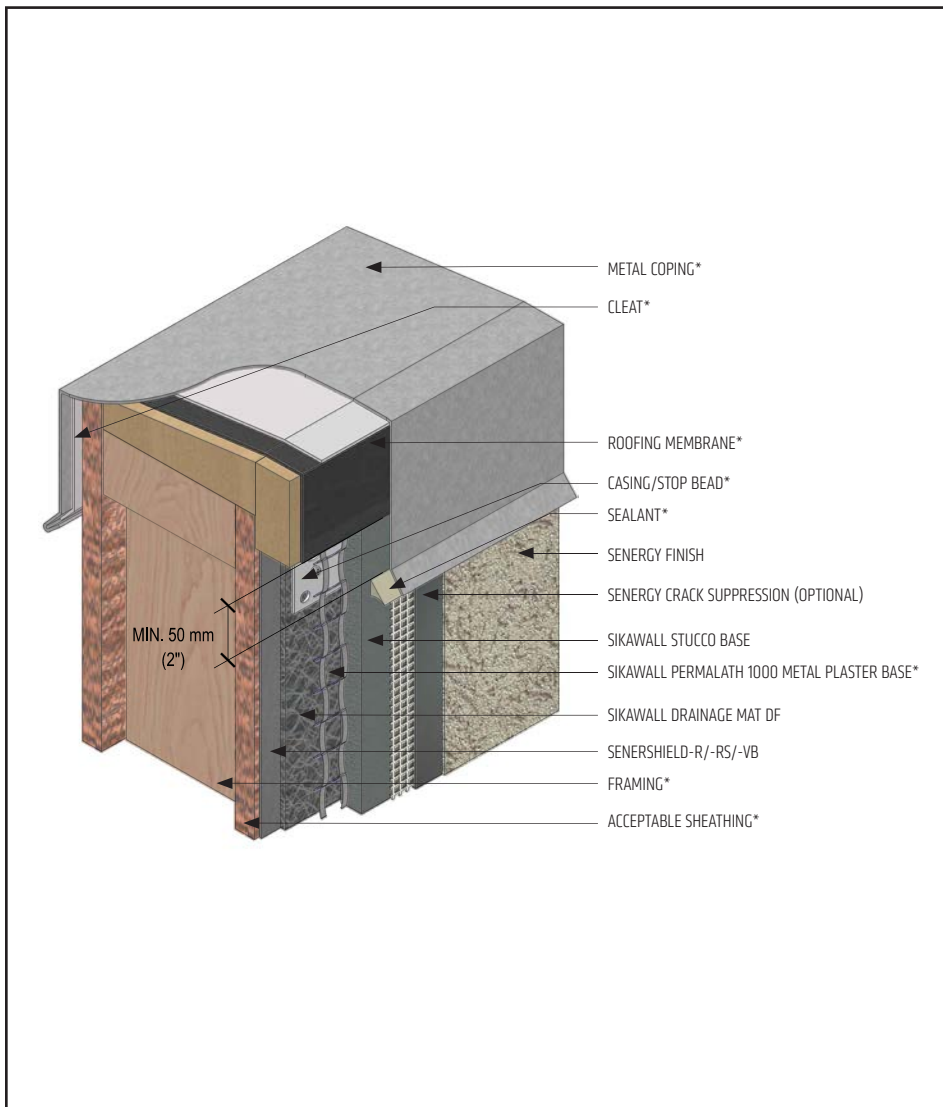
(*NOTE: BY OTHERS)

The details within are latest recommendations and are represent in good faith by Sika Corporation US (hereinafter Sika). The details are subject to change without notice. Sika accepts no liability for the end use of the details. For conditions not shown, consult Sika for review of specific details.

- Install Sika materials in accordance with current installation instructions.
- Unsatisfactory conditions shall be reported to the General Contractor and corrected before the application of Sika products.

Sentry Stucco Ultra Wall System

TYPICAL COPING



- Extend coping a minimum of 2" (50 mm) on to face of Sentry Stucco Ultra Wall System and seal drip edge.
- Senershield-R/-RS/-VB shall be installed up and over the top and extended down the other side.
- Senergy Crack Suppression: Flexguard 4 or SikaWall SRT Mesh embedded in Senergy Base Coat or SikaWall Stucco Surface Leveler.

SSU-18 2404

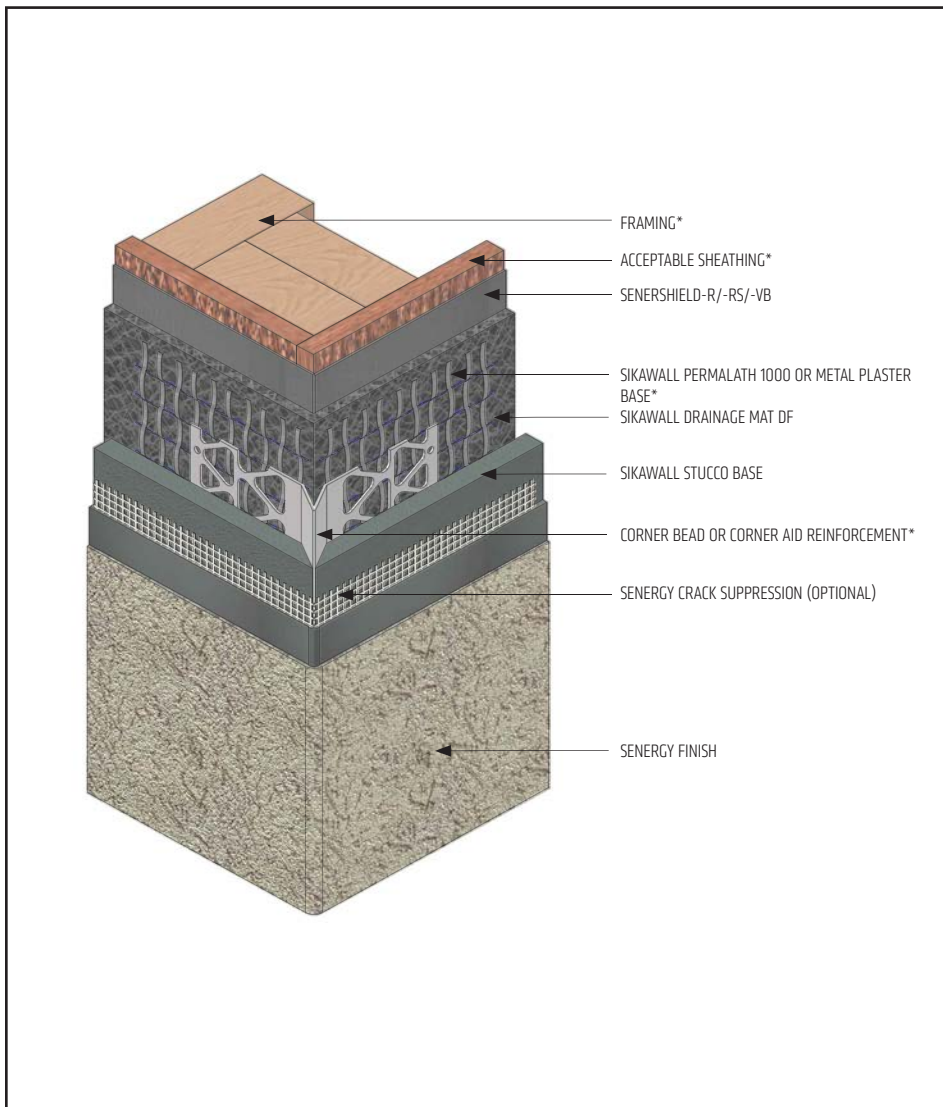
(*NOTE: BY OTHERS)

The details within are latest recommendations and are represent in good faith by Sika Corporation US (hereinafter Sika). The details are subject to change without notice. Sika accepts no liability for the end use of the details. For conditions not shown, consult Sika for review of specific details.

- Install Sika materials in accordance with current installation instructions.
- Unsatisfactory conditions shall be reported to the General Contractor and corrected before the application of Sika products.

Sentry Stucco Ultra Wall System

TYPICAL CORNER BEAD



- Install all materials in accordance with installation instructions and applicable code.
- Attach corner bead over lath.
- Corner bead shall be filled solid with SikaWall Stucco Base as required.
- Senergy Crack Suppression: Flexguard 4 or SikaWall SRT Mesh embedded in Senergy Base Coat or SikaWall Stucco Surface Leveler.

SSU-19 2404

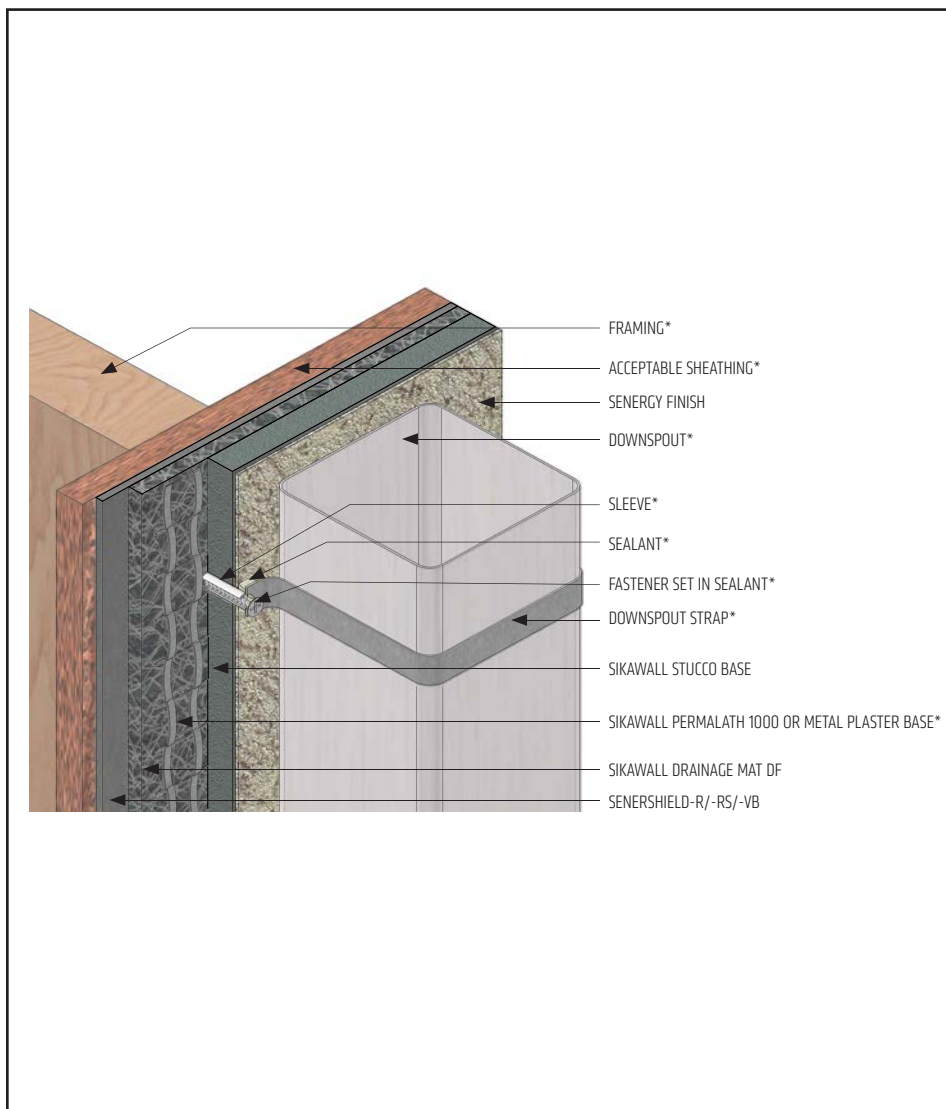
(*NOTE: BY OTHERS)

The details within are latest recommendations and are represent in good faith by Sika Corporation US (hereinafter Sika). The details are subject to change without notice. Sika accepts no liability for the end use of the details. For conditions not shown, consult Sika for review of specific details.

- Install Sika materials in accordance with current installation instructions.
- Unsatisfactory conditions shall be reported to the General Contractor and corrected before the application of Sika products.

Sentry Stucco Ultra Wall System

TYPICAL DOWNSPOUT APPLICATION



- Install all materials in accordance with installation instructions and applicable code.
- Properly seal all penetrations through the Sentry Stucco Ultra Wall System.

SSU-20 2404

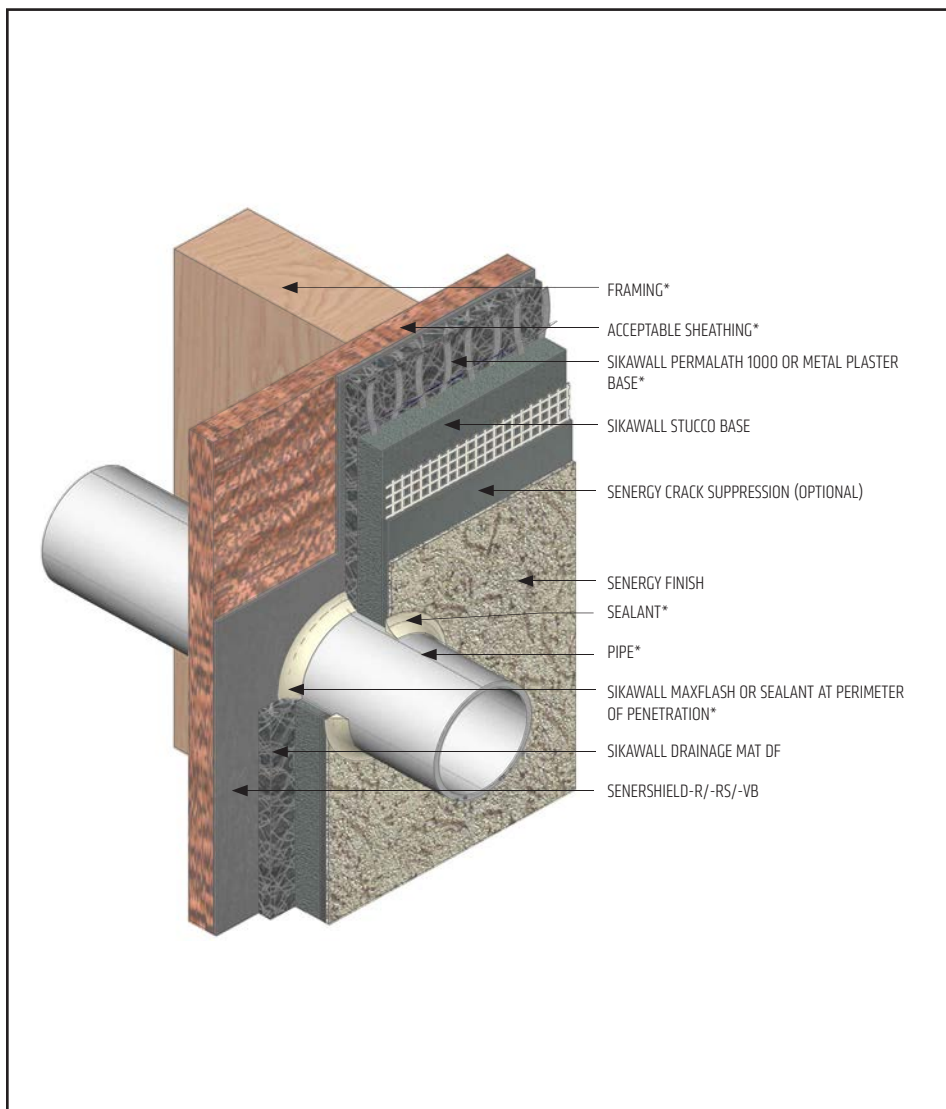
(*NOTE: BY OTHERS)

The details within are latest recommendations and are represent in good faith by Sika Corporation US (hereinafter Sika). The details are subject to change without notice. Sika accepts no liability for the end use of the details. For conditions not shown, consult Sika for review of specific details.

- Install Sika materials in accordance with current installation instructions.
- Unsatisfactory conditions shall be reported to the General Contractor and corrected before the application of Sika products.

Sentry Stucco Ultra Wall System

TYPICAL PIPE PENETRATION



- Install all materials in accordance with installation instructions and applicable code.
- Properly seal all penetrations through the Sentry Stucco Ultra Wall System.
- Senergy Crack Suppression: Flexguard 4 or SikaWall SRT Mesh embedded in Senergy Base Coat or SikaWall Stucco Surface Leveler.

SSU-21 2404

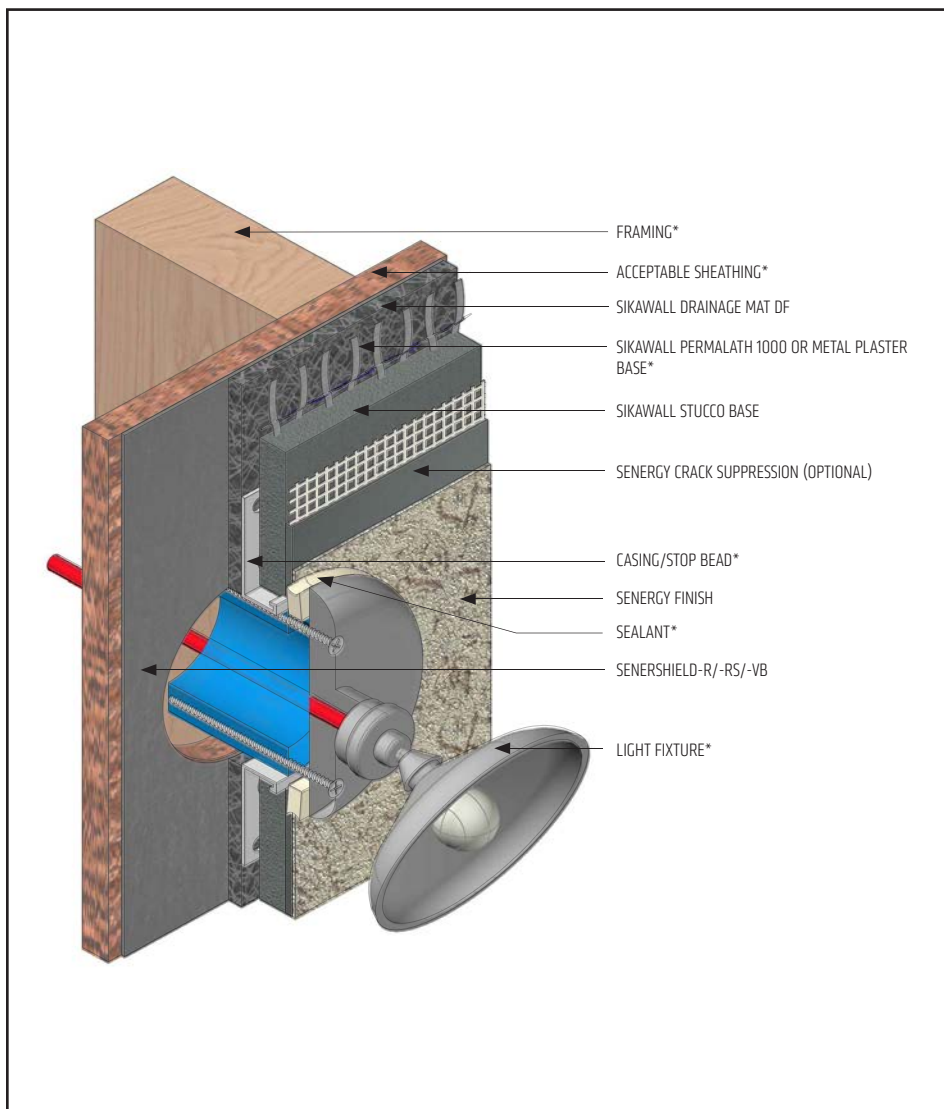
(*NOTE: BY OTHERS)

The details within are latest recommendations and are represent in good faith by Sika Corporation US (hereinafter Sika). The details are subject to change without notice. Sika accepts no liability for the end use of the details. For conditions not shown, consult Sika for review of specific details.

- Install Sika materials in accordance with current installation instructions.
- Unsatisfactory conditions shall be reported to the General Contractor and corrected before the application of Sika products.

Sentry Stucco Ultra Wall System

TYPICAL LIGHT FIXTURE



- Install all materials in accordance with installation instructions and applicable code.
- Properly seal all penetrations through the Sentry Stucco Ultra Wall System.
- Senergy Crack Suppression: Flexguard 4 or SikaWall SRT Mesh embedded in Senergy Base Coat or SikaWall Stucco Surface Leveler.

SSU-22 2404

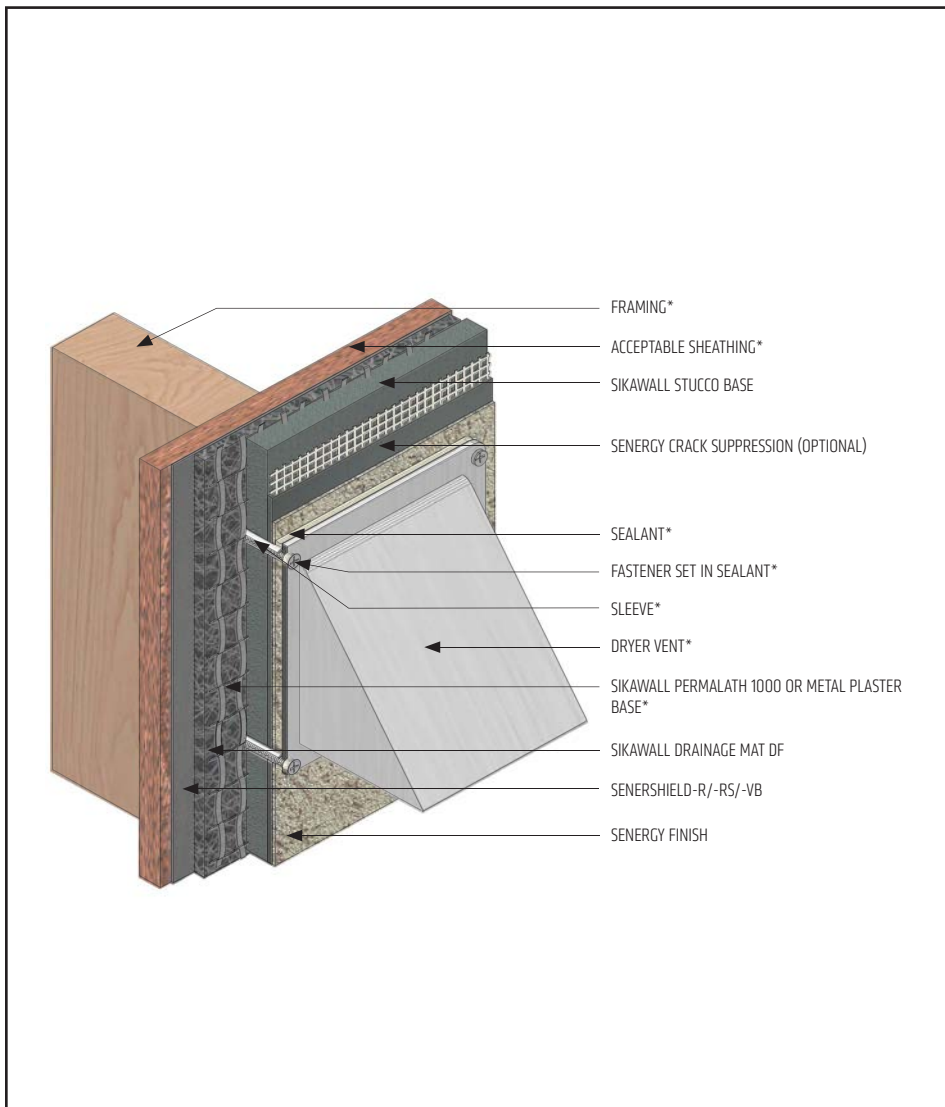
(*NOTE: BY OTHERS)

The details within are latest recommendations and are represent in good faith by Sika Corporation US (hereinafter Sika). The details are subject to change without notice. Sika accepts no liability for the end use of the details. For conditions not shown, consult Sika for review of specific details.

- Install Sika materials in accordance with current installation instructions.
- Unsatisfactory conditions shall be reported to the General Contractor and corrected before the application of Sika products.

Sentry Stucco Ultra Wall System

TYPICAL DRYER VENT



- Install all materials in accordance with installation instructions and applicable code.
- Properly seal all penetrations through the Sentry Stucco Ultra Wall System.
- Senergy Crack Suppression: Flexguard 4 or SikaWall SRT Mesh embedded in Senergy Base Coat or SikaWall Stucco Surface Leveler.

SSU-23 2404

(*NOTE: BY OTHERS)

The details within are latest recommendations and are represent in good faith by Sika Corporation US (hereinafter Sika). The details are subject to change without notice. Sika accepts no liability for the end use of the details. For conditions not shown, consult Sika for review of specific details.

- Install Sika materials in accordance with current installation instructions.
- Unsatisfactory conditions shall be reported to the General Contractor and corrected before the application of Sika products.



LIMITED WARRANTY NOTICE

Prior to each use of any product of Sika Corporation, its subsidiaries or affiliates ("SIKA"), the user must always read and follow the warnings and instructions on the product's most current product label, Product Data Sheet and Safety Data Sheet which are available at usa.sika.com/senenergy or by calling our Technical Service Department at +1 (800) 589-1336.

Nothing contained in any SIKA literature or materials relieves the user of the obligation to read and follow the warnings and instructions for each SIKA product as set forth in the current product label, Product Data Sheet and Safety Data Sheet prior to use of the SIKA product.

SIKA warrants this product for one year from date of installation to be free from manufacturing defects and to meet the technical properties on the current Product Data Sheet if used as directed within the product's shelf life. User determines suitability of product for intended use and assumes all risks. User's and/or buyer's sole remedy shall be limited to the purchase price or replacement of this product exclusive of any labor costs. NO OTHER WARRANTIES EXPRESS OR IMPLIED SHALL APPLY INCLUDING ANY WARRANTY OF MERCHANTABILITY OR FITNESS FOR A PARTICULAR PURPOSE. SIKA SHALL NOT BE LIABLE UNDER ANY LEGAL THEORY FOR SPECIAL OR CONSEQUENTIAL DAMAGES. SIKA SHALL NOT BE RESPONSIBLE FOR THE USE OF THIS PRODUCT IN A MANNER TO INFRINGE ON ANY PATENT OR ANY OTHER INTELLECTUAL PROPERTY RIGHTS HELD BY OTHERS. Sale of SIKA products are subject to the Terms and Conditions of Sale which are available at usa.sika.com.

For the most current version of this literature, please visit our website at usa.sika.com/senergy.

Sika Corporation

201 Polito Avenue
Lyndhurst, NJ 07071 USA
Customer Service +1 (800) 433-9517
Technical Service +1 (800) 589-1336
usa.sika.com/senergy

Rev April 2024

BUILDING TRUST

