

SYSTEM DATA SHEET

PAREX® WaterMaster LCR CI

CI Water-Drainage Exterior Wall Cladding for Light Commercial Residential

PRODUCT DESCRIPTION

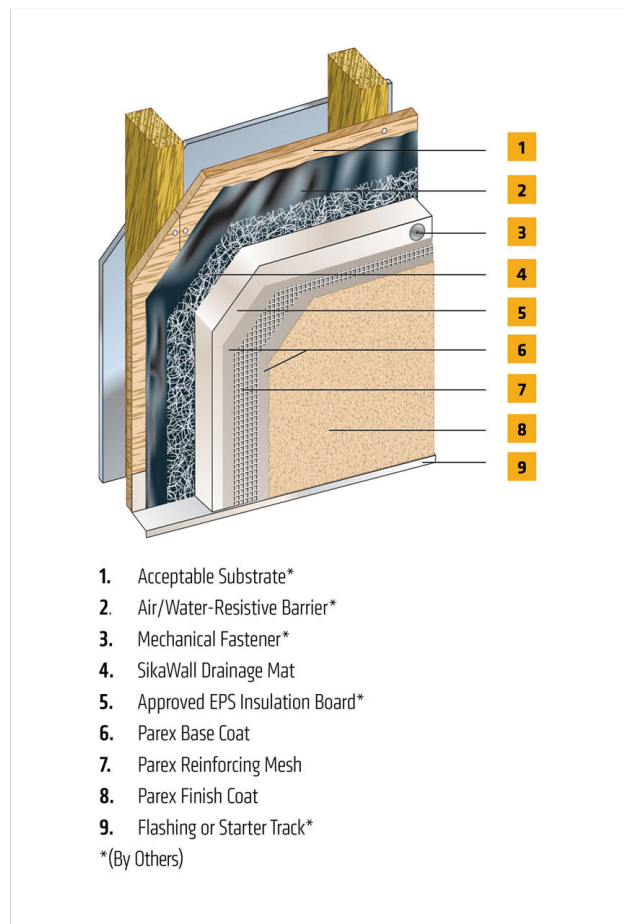
PAREX® WaterMaster LCR CI system is a mechanically attached drainage systems that offer energy efficiency; light weight, versatile design; and economical installation. These assemblies incorporate a water-resistive barrier wrap that creates a drainage plane for incidental moisture to migrate down and out of the wall assembly. PAREX® WaterMaster LCR CI is an air/water-resistive barrier, SikaWall Drainage Mat, mechanically attached EPS insulation board, Parex; base coat, reinforcing mesh and 100% acrylic polymer finish.

USES

For exterior walls in new or retrofit light commercial and residential wood frame construction when a water-drainage EIFS is desired or required to satisfy code issues related to drainage, and where high wind-load capacity is not a design consideration.

CHARACTERISTICS / ADVANTAGES

- Light commercial and residential use only
- Continuous Insulation
- Built in drainage



SYSTEM INFORMATION

Compatibility

Material substitution will adversely affect system performance and will void all warranty coverage unless approved in writing by Sika Facades Technical

APPLICATION INFORMATION

Substrates

Acceptable Substrates:

Glass mat gypsum sheathing
Gypsum sheathing
Exposure 1 OSB
Cement Board Sheathing
Poured concrete & Concrete Masonry
Exposure 1 Exterior Plywood

BASIS OF PRODUCT DATA

Results may differ based upon statistical variations depending upon mixing methods and equipment, temperature, application methods, test methods, actual site conditions and curing conditions.

AVAILABILITY/WARRANTY

Complies with IBC & IRC requirements for Exterior Insulation and Finish Systems (EIFS) and EIFS with Drainage.

LIMITATIONS

- Users must read the most current Product Data Sheets for each system component before using any products and follow all application instructions and cautions
- Wind-load requirements may limit the use of this system. The design wind-load shall not exceed the system's allowable windload as stated in applicable code reports.
- Heat build up behind dark colors can adversely affect the performance of EPS insulation. Use of colors with a light reflectance value of less than 20% is not recommended.
- For use on above grade vertical walls. System must terminate a minimum of 6" (152 mm) above grade.
- Typical locations for system expansion joints are at building expansion joints, at prefabricated panel joints, floor lines of wood frame construction or where slip tracks are used in steel frame construction, where substrates change and where structural movement is anticipated. It is the sole responsibility of the project design team, including the architect, engineer, etc., to ultimately determine specific expansion joint placement, width and design. Detail specific locations in construction drawings
- Additives are not permitted for any product unless approved in writing by Sika Facades Technical Service Team.
- All products must be installed at minimum 40 °F (4 °C) ambient and substrate temperatures unless otherwise noted on specific Product Data Sheets.
- Protect all work from precipitation for at least 24-hours after application.

- This system is not designed for horizontal applications. Always maintain a minimum slope of 1:2 up to a maximum width of 12".
- All substrates must be clean, dry and sound without planar irregularities greater than 1/4" per 10' (6 mm per 3 m).
- Maximum substrate design deflection is L/240.
- Sheathing must be protected with code approved water-resistive barrier, installed per applicable building code and manufacturer's requirements.
- Use SikaWall Strong 15 or Ultra HI 20 Reinforcing Mesh at ground floor and on other locations where high traffic is expected.
- Contact Sika Facades' Technical Service Department at 1-800-226-2424 for additional information.

ENVIRONMENTAL, HEALTH AND SAFETY

For further information and advice regarding transportation, handling, storage and disposal of chemical products, user should refer to the actual Safety Data Sheets containing physical, environmental, toxicological and other safety related data. User must read the current actual Safety Data Sheets before using any products. In case of an emergency, call CHEMTREC at 1-800-424-9300, International 703-527-3887.

LEGAL DISCLAIMER

- KEEP CONTAINER TIGHTLY CLOSED
- KEEP OUT OF REACH OF CHILDREN
- NOT FOR INTERNAL CONSUMPTION
- FOR INDUSTRIAL USE ONLY
- FOR PROFESSIONAL USE ONLY

Prior to each use of any product of Sika Corporation, its subsidiaries or affiliates ("SIKA"), the user must always read and follow the warnings and instructions on the product's most current product label, Product Data Sheet and Safety Data Sheet which are available at usa.sika.com or by calling SIKA's Technical Service Department at 1-800-933-7452. Nothing contained in any SIKA literature or materials relieves the user of the obligation to read and follow the warnings and instructions for each SIKA product as set forth in the current product label, Product Data Sheet and Safety

Data Sheet prior to use of the Sika product.

Sika warrants this product for one year from date of installation to be free from manufacturing defects and to meet the technical properties on the current Product Data Sheet if used as directed within the product's shelf life. User determines suitability of product for intended use and assumes all risks. User's and/or buyer's sole remedy shall be limited to the purchase price or replacement of this product exclusive of any labor costs. **NO OTHER WARRANTIES EXPRESS OR IMPLIED SHALL APPLY INCLUDING ANY WARRANTY OF MERCHANTABILITY OR FITNESS FOR A PARTICULAR PURPOSE. Sika SHALL NOT BE LIABLE UNDER ANY LEGAL THEORY FOR SPECIAL OR CONSEQUENTIAL DAMAGES. Sika SHALL NOT BE RESPONSIBLE FOR THE USE OF THIS PRODUCT IN A MANNER TO INFRINGE ON ANY PATENT OR ANY OTHER INTELLECTUAL PROPERTY RIGHTS HELD BY OTHERS.**

Sale of Sika products are subject to the Terms and Conditions of Sale which are available at <https://usa.sika.com/en/group/SikaCorp/termsandconditions.html> or by calling 1-800-933-7452.

Sika warrants this product for one year from date of installation to be free from manufacturing defects and to meet the technical properties on the current Product Data Sheet if used as directed within the product's shelf life. User determines suitability of product for intended use and assumes all risks. User's and/or buyer's sole remedy shall be limited to the purchase price or replacement of this product exclusive of any labor costs. **NO OTHER WARRANTIES EXPRESS OR IMPLIED SHALL APPLY INCLUDING ANY WARRANTY OF MERCHANTABILITY OR FITNESS FOR A PARTICULAR PURPOSE. Sika SHALL NOT BE LIABLE UNDER ANY LEGAL THEORY FOR SPECIAL OR CONSEQUENTIAL DAMAGES. Sika SHALL NOT BE RESPONSIBLE FOR THE USE OF THIS PRODUCT IN A MANNER TO INFRINGE ON ANY PATENT OR ANY OTHER INTELLECTUAL PROPERTY RIGHTS HELD BY OTHERS.** Sale of Sika products are subject to the Terms and Conditions of Sale which are available at usa.sika.com.

Sika Corporation
201 Polito Avenue
Lyndhurst, NJ 07071
Phone: +1-800-933-7452
Fax: +1-201-933-6225
usa.sika.com



System Data Sheet
PAREX® WaterMaster LCR CI
June 2025, Version 01.01
021830950000242761

PAREXWaterMasterLCRCI-en-US-(06-2025)-1-1.pdf

