

Senerflex GDC with MaxGrip Veneer Adhesive

An exterior cladding system with a continuous air/water-resistive barrier and insulation, featuring MaxGrip Veneer Adhesive a high-strength, specially-formulated setting bed mortar used to adhere natural and manufactured stone, tile, and thin brick veneer.

SYSTEM DESCRIPTION

Senerflex GDC with MaxGrip Veneer Adhesive is a continuously insulated drainage wall cladding system. It features a Senershield fluid-applied air/water-resistive barrier, moisture drainage, continuous exterior Geometrically Defined Cavity (GDC) insulation board and MaxGrip Veneer Adhesive used to adhere natural and manufactured stone, tile, and thin brick veneer.

USES

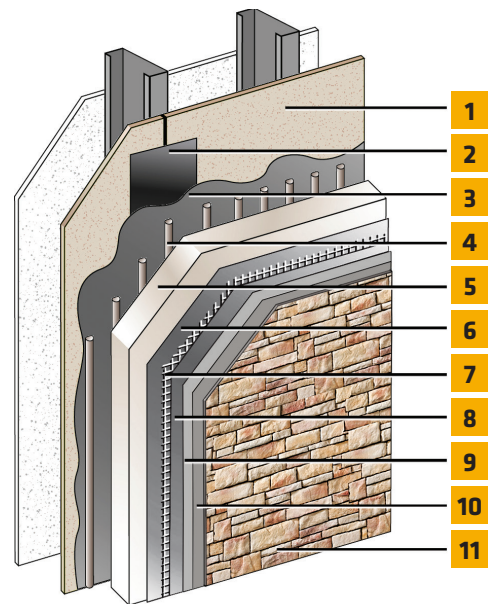
Senerflex GDC with MaxGrip Veneer Adhesive is used for exterior walls in new and retrofit commercial, institutional and residential construction. It is used when a water drainage or rainscreen Class PB EIFS is desired or required to satisfy code.

ACCEPTABLE SUBSTRATES

PermaBase® Cement Board and other cement boards conforming with ASTM C1325 (Type A - exterior); poured concrete/unit masonry; ASTM C1177 type sheathings, including Weather Defense™ Platinum sheathing, GreenGlass® sheathing, eXP™ sheathing, GlasRoc® sheathing, Securock™ glass-mat sheathing, and DensGlass® exterior sheathing; DensElement (sheathing only), gypsum sheathing (ASTM C79/C1396); Exposure I or exterior plywood (Grade C/D or better); or Exposure I OSB; Huber Zip (sheathing only).

MATERIAL SUBSTITUTION

Material substitution will adversely affect system performance and will void all warranty coverage unless approved in writing by Sika Facades.



1. Acceptable Substrate**
2. Approved Joint Reinforcement: Sika MaxFlash or SikaWall Sheathing Fabric embedded in Senershield-R/-RS/-VB
3. Senershield-R/-RS/-VB
4. Senergy Adhesive
5. GDC Insulation Board*
6. Senergy Base Coat
7. SikaWall Intermediate 12 Reinforcing Mesh
8. Senergy Base Coat
9. Skim Coat of SikaWall MaxGrip Veneer Adhesive
10. SikaWall MaxGrip Veneer Adhesive
11. Adhered Veneer**

(*By Others)

Senerflex GDC with MaxGrip Veneer Adhesive

DESIGN CONSIDERATIONS

- For use on above grade vertical walls. System must terminate a minimum of 8" (200 mm) above grade.
- Additives are not permitted for any product unless approved in writing by Sika Facades Technical Service Team.
- All products must be installed at minimum 40 °F (4 °C) ambient and substrate temperatures unless otherwise noted on specific Product Data Sheets.
- Protect all work from precipitation for at least 24-hours after application and until dry.
- All products must be stored in accordance with specific instructions on relevant Product Data Sheets.
- All substrates must be clean, dry and sound without planar irregularities greater than 1/4" per 10' (6 mm per 3 m).
- Veneer should not exceed 6.8 kg. per square meter (15 lbs. per square foot).

WARRANTY

Prior to each use of any product of Sika Corporation, its subsidiaries or affiliates ("SIKA"), the user must always read and follow the warnings and instructions on the product's most current product label, Product Data Sheet and Safety Data Sheet which are available at usa.sika.com/senergy or by calling SIKAFACADES' Technical Service Department at 1-800-589-1336. Nothing contained in any SIKAFACADES literature or materials relieves the user of the obligation to read and follow the warnings and instructions for each SIKAFACADES product as set forth in the current product label, Product Data Sheet and Safety Data Sheet prior to use of the SIKAFACADES product.

SIKAFACADES warrants this product for one year from date of installation to be free from manufacturing defects and to meet the technical properties on the current Product Data Sheet if used as directed within the product's shelf life. User determines suitability of product for intended use and assumes all risks. User's and/or buyer's sole remedy shall be limited to the purchase price or replacement of this product exclusive of any labor costs. NO OTHER WARRANTIES EXPRESS OR IMPLIED SHALL APPLY INCLUDING ANY WARRANTY OF MERCHANTABILITY OR FITNESS FOR A PARTICULAR PURPOSE. SIKAFACADES SHALL NOT BE LIABLE UNDER ANY LEGAL THEORY FOR SPECIAL OR CONSEQUENTIAL DAMAGES. SIKAFACADES SHALL NOT BE RESPONSIBLE FOR THE USE OF THIS PRODUCT IN A MANNER TO INFRINGE ON ANY PATENT OR ANY OTHER INTELLECTUAL PROPERTY RIGHTS HELD BY OTHERS. Sale of SIKAFACADES products are subject to the Terms and Conditions of Sale which are available at usa.sika.com.