

SYSTEM DATA SHEET

PAREX® NuTech Stucco

Cement Board Stucco System

PRODUCT DESCRIPTION

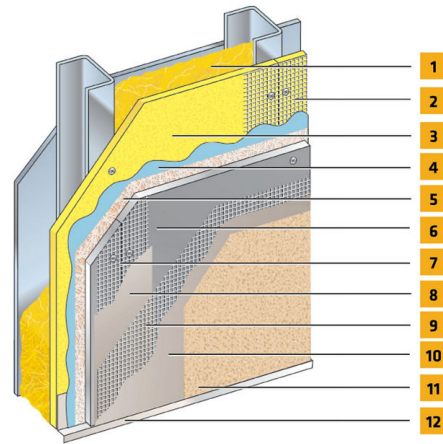
NuTech Stucco is a high-impact, water-drainage wall coating system that incorporates a air/water-resistive barrier and features a cement board (ASTM C1325) substrate installed with a polymer-modified base coat, fiberglass reinforcing mesh, and finishes. NuTech Stucco provides impact and puncture resistance without sacrificing design freedom.

USES

For exterior walls in new or retrofit commercial, institutional and residential construction such as hotels, hospitals, retail, schools, multi-family apartments and condominiums, and government facilities.

CHARACTERISTICS / ADVANTAGES

- For use with non-combustible construction types
- For use on fire resistance rated walls
- Built in drainage
- Unlimited building height



1. Cavity Insulation*
2. SikaWall Joint Treatment
3. Acceptable Sheathing*
4. Parex WeatherSeal
5. SikaWall Drainage Mat
6. Cement Board*
7. Sheathing Joint Reinforcement
8. Parex Base Coat
9. Parex or SikaWall Reinforcing Mesh
10. Parex Base Coat
11. Parex Finish
12. Flashing or Starter Track*

*By Others

SYSTEM INFORMATION

Compatibility

Material substitution will adversely affect system performance and will void all warranty coverage unless approved in writing by Sika Facades Technical Service Team.

TECHNICAL INFORMATION

Test Results

Test	METHOD	Criteria	RESULTS
Direct-Applied Exterior Finish Systems (DEFS)	ICC-ES AC59		Meets all performance requirements
Transverse Wind-load	ASTM E330	Steel stud framing (16 gauge, 3 5/8") @ 16"o.c	Average ultimate loads: - 2585 Pa (- 54 psf) + 1053 Pa (+ 22 psf) not taken to failure
Transverse Wind-load	ASTM E330	Steel stud framing (20 gauge, 35/8") @ 16"o.c.	Average ultimate loads: - 1676 Pa (- 35 psf) + 862 Pa (+ 18 psf) not taken to failure
Transverse Wind-load	ASTM E330	Wood assembly (2" x 4") @ 16"o.c.	Average ultimate loads: - 2681 Pa (- 56 psf) + 1197 Pa (+ 25 psf) not taken to failure
Bond Strength after Accelerated Weathering and Freeze-thaw Test	AC59	Minimum 34.3 kPa (5 psi)	Pass
Racking Test	ASTM E72	No failure of finish at substrate joints before failure of substrate OR no failure at 1" net deflection	Pass
Restrained Environmental Cycling Test	AC59	No cracking of finish or other distress after 5 cycles of water spray (24 hrs.) and radiant heat (72 hrs.)	Pass
Water Penetration	ASTM E 331	No water penetration after 15 minutes @ 137 Pa (2.86 psf)	Pass
Radiant Heat Exposure	NFPA 268	No ignition at 20 minutes	Met test criteria.

Fire Endurance	ASTM E119	Maintain fire resistance of existing rated assembly	2-hour rating
Intermediate Scale Multi-story Fire Test	NFPA 285 / UBC Standard 26-9	1. Resist flame propagation over the exterior surface 2. Resist vertical spread of flame within combustible core/ component of panel from one story to the next 3. Resist vertical spread of flame over the interior surface from one story to the next 4. Resist lateral spread of flame from the compartment of fire origin to adjacent spaces	Met test criteria
Surface Burning	ASTM E84 / UL 723	Flame spread < 25 Smoke developed < 450	All components of the system meet Class A performance (FS < 25; SD < 450)
Abrasion Resistance	ASTM D968	No Cracking or loss of film integrity at 528 qt. (500L) of sand	Finish Coat not worn through after 686 liters of falling sand
Accelerated Weathering	ASTM G 153 (formerly G23)	No deleterious effects after 2000 hours.	Pass
Freeze-Thaw	AC59	No deleterious effects after 10 cycles	Pass 60 cycles
Mildew Resistance	Mil Std 810B Method 508	No fungus growth after 28 days	Pass
Salt Fog Resistance	ASTM B117	No deleterious effects after 300 hours	Pass
Water Resistance	ASTM D 2247	No deleterious effects after 14 days exposure	Pass

APPLICATION INFORMATION

Substrates

Acceptable Substrates:

Cement Board Sheathing meeting ASTM C1325

BASIS OF PRODUCT DATA

Results may differ based upon statistical variations depending upon mixing methods and equipment, temperature, application methods, test methods, actual site conditions and curing conditions.

LIMITATIONS

- Users must read the most current Product Data Sheets for each system component before using any products and follow all application instructions and cautions.
- Use only for above grade vertical walls.

ENVIRONMENTAL, HEALTH AND SAFETY

For further information and advice regarding transportation, handling, storage and disposal of chemical products, user should refer to the actual Safety Data Sheets containing physical, environmental, toxicological and other safety related data. User must read the current actual Safety Data Sheets before using any products. In case of an emergency, call CHEMTREC at 1-800-424-9300, International 703-527-3887.

LEGAL DISCLAIMER

- KEEP CONTAINER TIGHTLY CLOSED
- KEEP OUT OF REACH OF CHILDREN
- NOT FOR INTERNAL CONSUMPTION
- FOR INDUSTRIAL USE ONLY
- FOR PROFESSIONAL USE ONLY

Prior to each use of any product of Sika Corporation, its subsidiaries or affiliates ("SIKA"), the user must always read and follow the warnings and instructions on the product's most current product label, Product Data Sheet and Safety Data Sheet which are available at usa.sika.com or by calling SIKA's Technical Service Department at 1-800-933-7452. Nothing contained in any SIKA literature or materials relieves the user of the obligation to read and follow the warnings and instructions for each SIKA product as set forth in the current product label, Product Data Sheet and Safety Data Sheet prior to use of the SIKA product.

Sika Corporation
201 Polito Avenue
Lyndhurst, NJ 07071
Phone: 1-800-933-7452
Fax: 1-201-933-6225
E-Mail: sika-usa@usa.sika.com

SIKA warrants this product for one year from date of installation to be free from manufacturing defects and to meet the technical properties on the current Product Data Sheet if used as directed within the product's shelf life. User determines suitability of product for intended use and assumes all risks. User's and/or buyer's sole remedy shall be limited to the purchase price or

replacement of this product exclusive of any labor costs. **NO OTHER WARRANTIES EXPRESS OR IMPLIED SHALL APPLY INCLUDING ANY WARRANTY OF MERCHANTABILITY OR FITNESS FOR A PARTICULAR PURPOSE. SIKA SHALL NOT BE LIABLE UNDER ANY LEGAL THEORY FOR SPECIAL OR CONSEQUENTIAL DAMAGES. SIKA SHALL NOT BE RESPONSIBLE FOR THE USE OF THIS PRODUCT IN A MANNER TO INFRINGE ON ANY PATENT OR ANY OTHER INTELLECTUAL PROPERTY RIGHTS HELD BY OTHERS.**

Sale of SIKA products are subject to the Terms and Conditions of Sale which are available at <https://usa.sika.com/en/group/SikaCorp/termsandconditions.html> or by calling 1-800-933-7452.

SIKA warrants this product for one year from date of installation to be free from manufacturing defects and to meet the technical properties on the current Product Data Sheet if used as directed within the product's shelf life. User determines suitability of product for intended use and assumes all risks. User's and/or buyer's sole remedy shall be limited to the purchase price or replacement of this product exclusive of any labor costs. **NO OTHER WARRANTIES EXPRESS OR IMPLIED SHALL APPLY INCLUDING ANY WARRANTY OF MERCHANTABILITY OR FITNESS FOR A PARTICULAR PURPOSE. SIKA SHALL NOT BE LIABLE UNDER ANY LEGAL THEORY FOR SPECIAL OR CONSEQUENTIAL DAMAGES. SIKA SHALL NOT BE RESPONSIBLE FOR THE USE OF THIS PRODUCT IN A MANNER TO INFRINGE ON ANY PATENT OR ANY OTHER INTELLECTUAL PROPERTY RIGHTS HELD BY OTHERS.** Sale of SIKA products are subject to the Terms and Conditions of Sale which are available at usa.sika.com.



System Data Sheet
PAREX® NuTech Stucco
June 2025, Version 01.01
021830950000242567

PAREXNuTechStucco-en-US-(06-2025)-1-1.pdf

