



Construction

Sikadur 35, Hi-Mod LV

Application Instructions

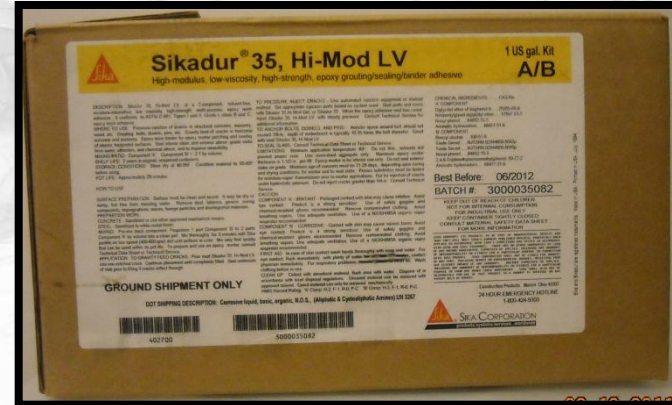
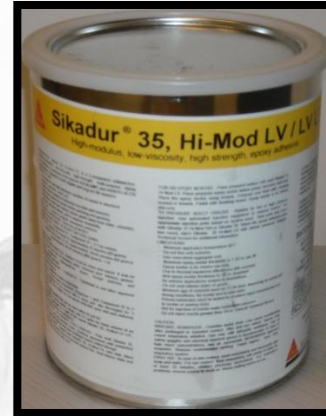


Sika®

Sika Corporation

Sikadur 35, Hi-Mod LV

- ▲ Structural epoxy adhesive
- ▲ Multi-purpose
- ▲ Two-component
- ▲ 100% solids
- ▲ Low viscosity
- ▲ Moisture-tolerant
- ▲ High strength



Sikadur 35, Hi-Mod LV

▲ Where to use:

- Pressure-injection of cracks in structural concrete, masonry, wood, etc.
- Gravity-feed of cracks in horizontal concrete and masonry
- Epoxy resin binder for epoxy mortar patching and overlay of interior and horizontal surfaces
- Sealing of interior slabs and exterior above-grade slabs

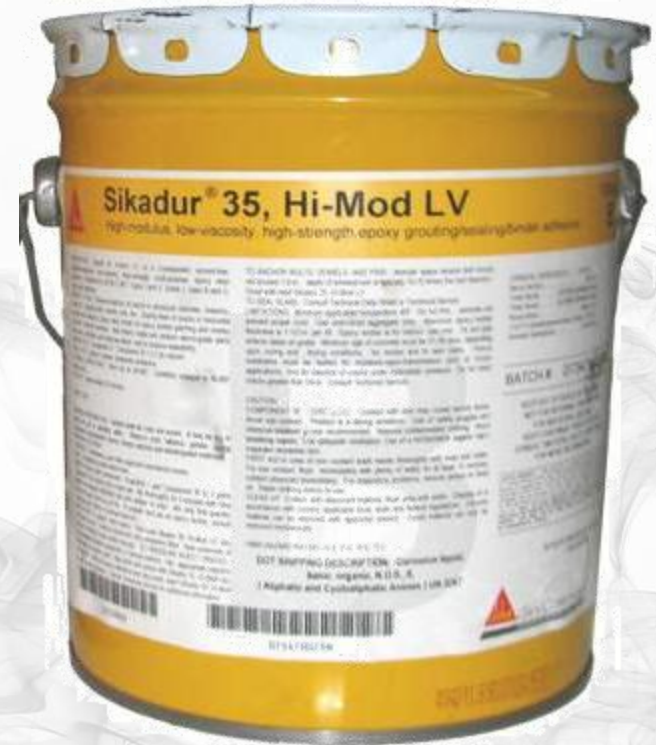
Sikadur 35, Hi-Mod LV

▲ Packaging:

- 1 and 3 gal. units
- 165 gal. units (drums)

▲ Coverage:

- 1 gal. yields 231 in³ of adhesive and grout
- 1 gal. of adhesive (A + B), when mixed with 5 gal. by loose volume of oven-dried aggregate, yields approx. 808.5 in³ of epoxy mortar



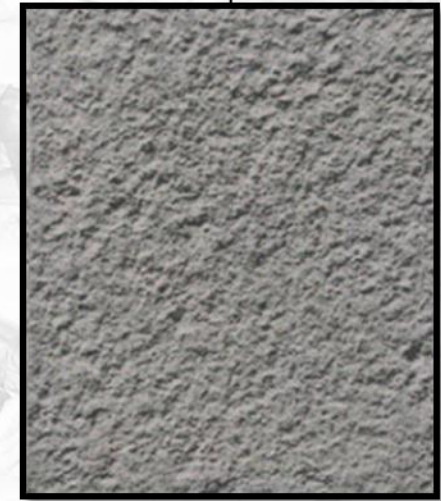
Surface Preparation

- ▲ Surface must be clean and sound.
- ▲ Surface can be either dry or damp, but free of standing water. Dry conditions are ideal.
- ▲ Remove dust, laitance, grease, curing compounds, impregnations, waxes and any other contaminants before application.

Surface Preparation

▲ Concrete:

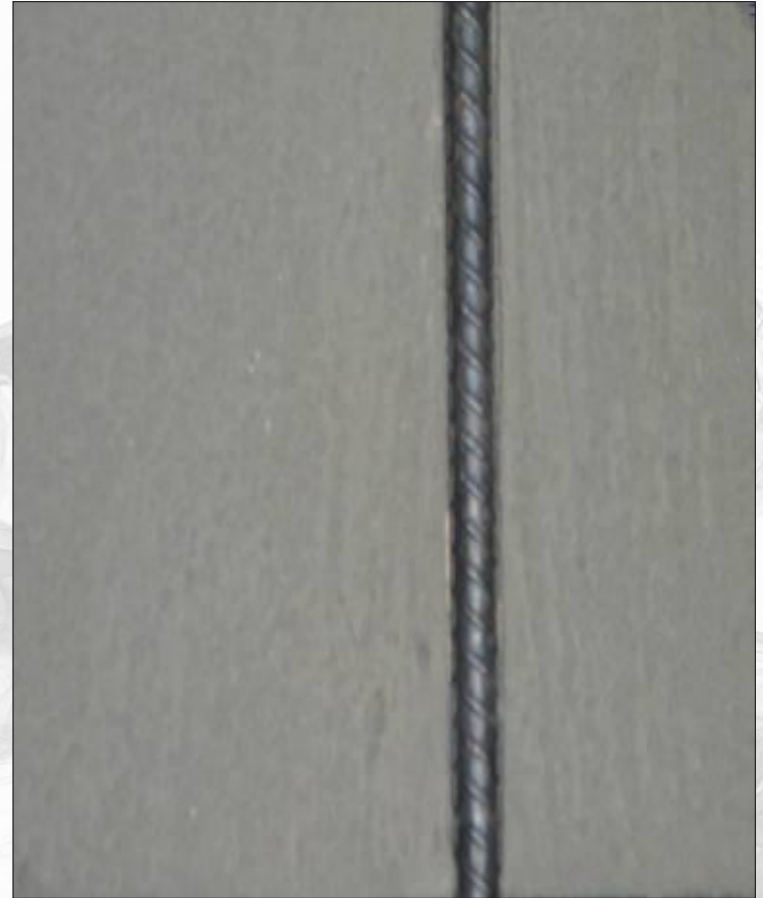
- Surface should be cleaned and prepared to achieve a laitance and contaminant free, open textured surface by blast cleaning or equivalent mechanical means.
- Follow typical concrete repair mortar guidelines for surface preparation (SSD not required), for epoxy mortar applications.



Steel Preparation

▲ Steel

- Steel should be cleaned and prepared thoroughly by blast cleaning.



Tools Required

- ▲ 1/2" drill motor
- ▲ Low speed drill (400-600 rpm)
- ▲ Drill and Jiffy paddle for mixing
- ▲ Spatula



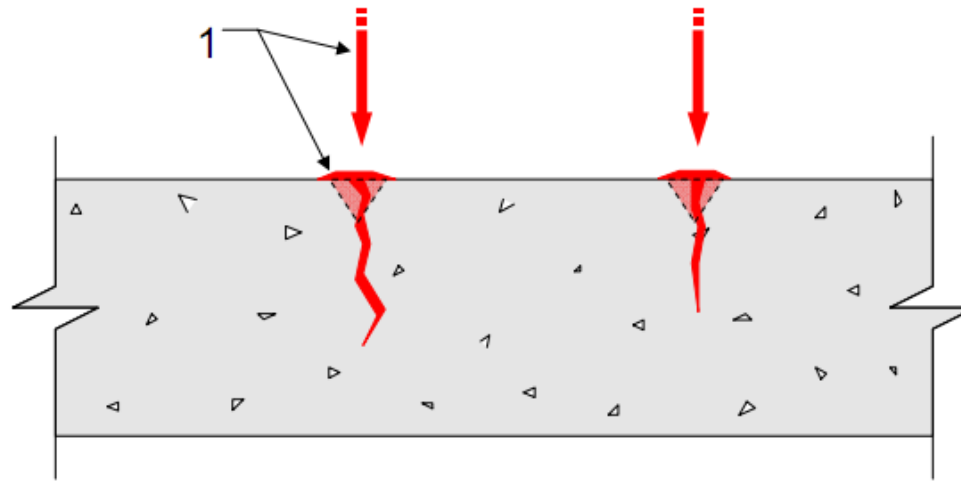
Mixing

- ▲ Pre-mix both A & B components
- ▲ Condition to 65°-85°F before mixing
- ▲ Proportion 2 parts A to 1 part B by volume into clean pail
- ▲ Mix thoroughly for 3 minutes with Jiffy mixing paddle on low-speed (400-600 rpm) drill until uniform in color
- ▲ Mix only quantity that can be used within pot life



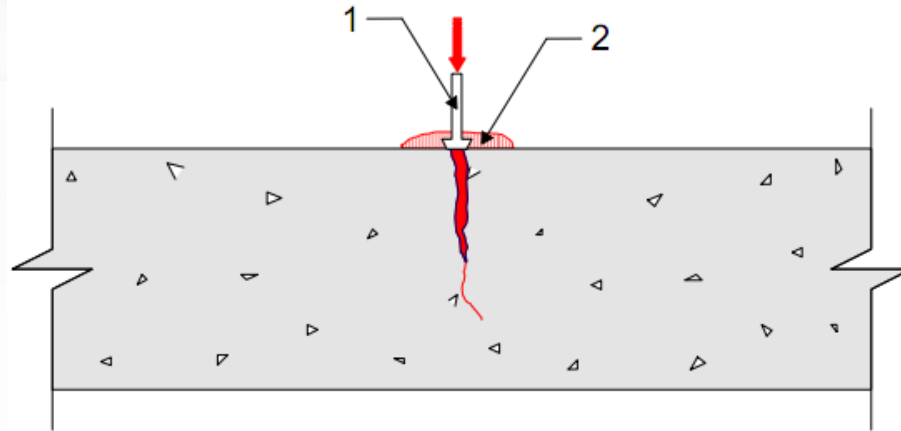
Application – Gravity Feed

- ▲ Blow V-notched crack clean with oil-free compressed air.
- ▲ Pour neat Sikadur 35, Hi-Mod LV into V-notched crack until completely filled.
- ▲ Seal underside of slab prior to filling if cracks reflect through.



Application – Pressure Inject

1. Set appropriate injection ports based on system
2. Seal ports and crack with Sikadur 31 Hi-Mod Gel, Sikadur 33 or Sikadur Injection Gel
 - Use automated injection equipment or manual method.
 - When the epoxy adhesive seal has cured, inject Sikadur 35, Hi-Mod LV with steady pressure.



Application – Slab Sealer

- ▲ Spread neat Sikadur 35, Hi-Mod LV over slab. Allow penetration.
- ▲ Remove excess to prevent surface film. Seal interior slabs and above-grade exterior slabs only.



Mixing

▲ Epoxy Mortar

- Add 4 - 5 parts by loose volume of an oven-dried silica sand to 1 part of mixed Sikadur 35, Hi-Mod LV and mix until uniform in consistency.



Application

- ▲ For an epoxy mortar
 - Prime prepared surface with neat Sikadur 35, Hi-Mod LV.
 - Place prepared epoxy mortar before primer becomes tack-free.
 - Place the epoxy mortar using trowels.
 - Compact and level with vibrating screed or trowels.
 - Finish with finishing trowel.



Precautions

- ▲ Always read the current product data sheet, material safety data sheet and label prior to use
- ▲ Avoid skin and eye contact
- ▲ Wear
 - chemical resistant gloves
 - goggles
- ▲ Ventilate area
- ▲ Dispose of in accordance with local, state and federal regulations
- ▲ Uncured material can be removed with approved solvent (e.g. xylene, acetone or MEK)
- ▲ Follow manufacturer's warnings and instructions for use



Sikadur 35, Hi-Mod LV

Sika Product Data Sheets can be obtained via:

<http://usa.sika.com>

Refer to data sheets for specific information on each Sika product.

