

**PAREX<sup>®</sup>**



# MASONRY VENEER SYSTEMS

COMPREHENSIVE MASONRY VENEER SYSTEMS  
WITH A RANGE OF AESTHETIC OPPORTUNITIES

**BUILDING TRUST**





# MASONRY VENEER SYSTEMS

---

## **SUPERIOR PERFORMANCE WITH UNLIMITED AESTHETIC POSSIBILITIES**

As design trends evolve toward multi-cladding with stone and brick; architects, designers, building owners and other construction professionals are seeking alternatives that can help them achieve the required performance and multi-cladding aesthetic. Parex has designed WaterMaster MVS CI to specifically meet the challenges of multi-cladding construction, creating the look and feel your clients want, with code compliance and building performance you need, at a cost that facilitates project success.



*Adena Orthopedic and Spine Institute  
Chillicothe, OH*

## **REDUCED COMPLEXITY**

Achieve a multi-cladding aesthetic from masonry veneer to metal, wood and so much more over a continuously insulated (CI) wall system from one manufacturer. Eliminate extra work detailing complex transitions between multiple claddings and manufacturers.

## **MASONRY VENEER**

Featuring Parex Masonry Veneer Adhesive, the high-strength mortar, is used to adhere up to 15 psf of natural and manufactured stone, ceramic tile, and thin brick veneer without the need to use mechanical fasteners or Z-girts, saving time and money, and eliminating the risk of mortar failure.

## **ENERGY EFFICIENCY**

Achieve the desired masonry veneer aesthetic without compromising the continuous exterior insulation. Seamless integration of continuous insulation, weather barrier and drainage ensures optimum heat, air and moisture control. Parex Masonry Veneer Adhesive is strong enough to adhere masonry veneer without the use of mechanical fasteners, keeping these critical control layers intact, which eliminates thermal bridging and reduces the risk of moisture intrusion.

## **JOBSITE PRODUCTIVITY**

Take the headache out of coordinating the sequence of trades and products from multiple manufacturers. The Parex WaterMaster MVS CI can be installed by a single applicator, helping you complete the job on time and within budget.

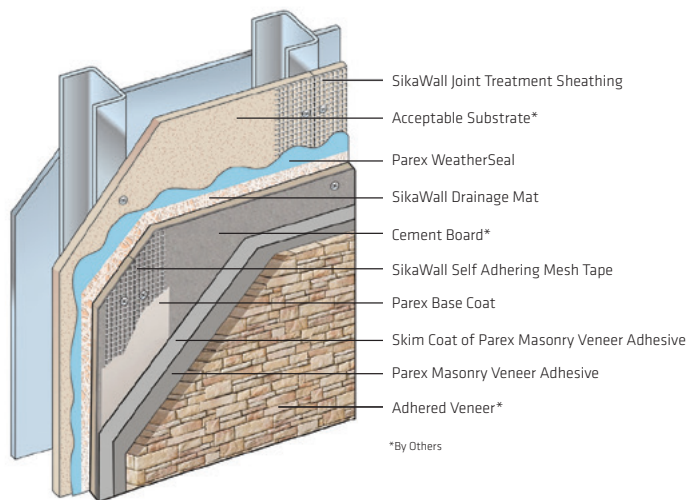
## **BUILD WITH CONFIDENCE**

Fully tested and evaluated to ensure components work as a code-compliant system, the Parex WaterMaster MVS CI is listed by ICC Evaluation Service in ESR-2562 evaluation report and complies with NFPA 285 standard.

# NON-INSULATED MASONRY VENEER SYSTEMS

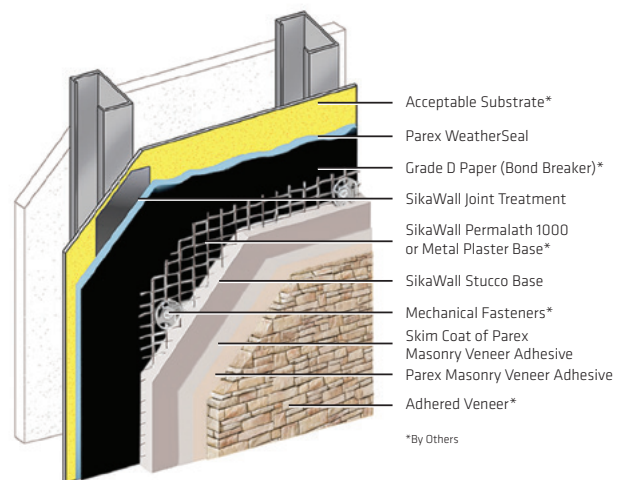
## THE POWER OF CHOICE AT YOUR FINGERTIPS

Parex's comprehensive portfolio of Masonry Veneer Systems empowers you to select the system that best meets your building enclosure and exterior finish objectives. Parex Masonry Veneer Adhesive is compatible with a variety of substrates, including cement board, stucco, concrete, CMU, and over Parex air/water resistive barriers.



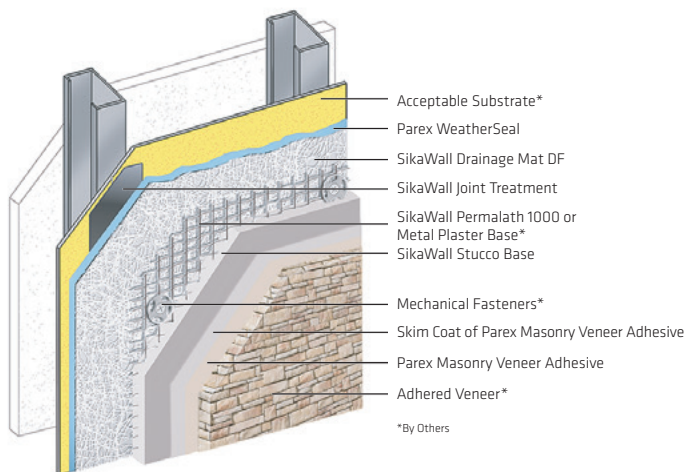
### PAREX NUTECH STUCCO MVS

A highly impact and puncture resistant, water-drainage wall system incorporating a cement board core, reinforced base coat and Parex Masonry Veneer Adhesive.



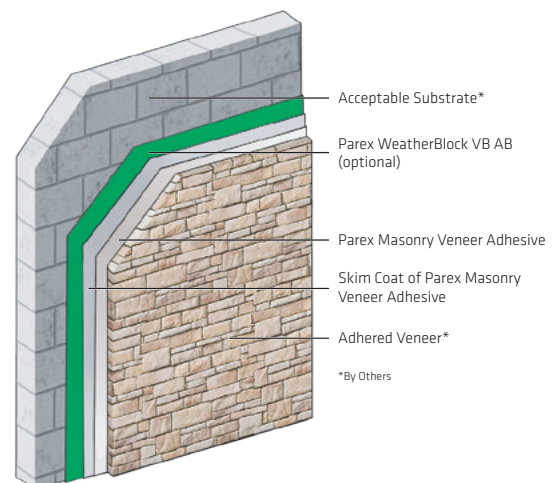
### PAREX ARMOURWALL MVS STUCCO

An impact and puncture resistant, cement plaster stucco system, which incorporates a Parex air and water-resistive barrier to provide a premium level of protection to the sheathing and cavity against moisture and air intrusion and features Parex Masonry Veneer Adhesive.



### PAREX ARMOURWALL MVS DM STUCCO

An impact and puncture resistant, cement plaster stucco system with enhanced water management. It incorporates a Parex air and water-resistive barrier to provide a premium level of protection to the sheathing and cavity against moisture and air intrusion and Parex Masonry Veneer Adhesive.

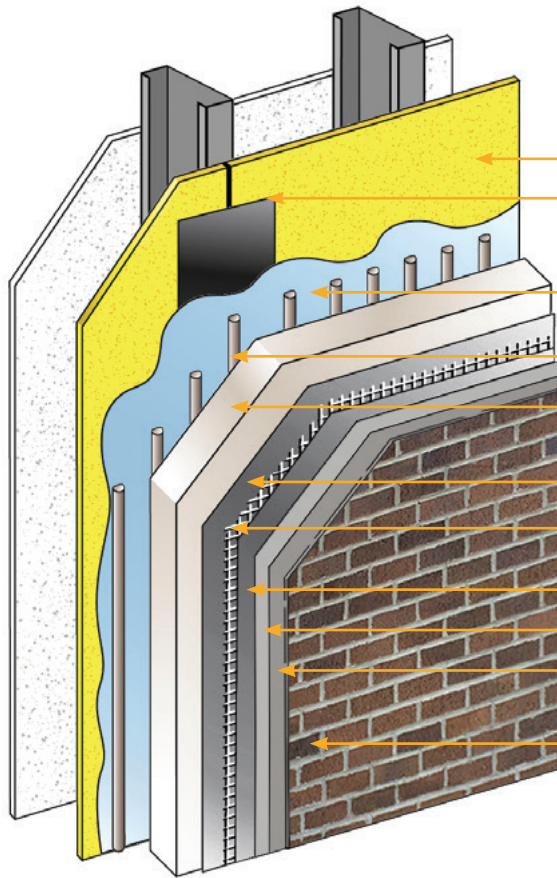


### PAREX MVS CMU

Concrete Masonry Unit with Parex fluid-applied air/water-resistive barrier and Parex Masonry Veneer Adhesive.

# PAREX WATERMASTER MVS CI

Innovative, high-performance wall system with unlimited aesthetic options



A fully integrated wall system with continuous insulation, air/water-resistive barrier and drainage, featuring Parex Masonry Veneer Adhesive.

1. Acceptable Substrate<sup>†</sup>
2. SikaWall Joint Treatment: MaxFlash or Sheathing Fabric, Flash Seal NP
3. Parex WeatherSeal Fluid-applied air and water-resistive barrier provides effective air and moisture protection
4. Parex Adhesive/Base Coat
5. Approved EPS Insulation Board<sup>‡</sup>  
Continuous exterior insulation delivers optimal energy efficiency
6. Parex Base Coat
7. SikaWall Intermediate 12 Reinforcing Mesh  
Structural wall support impact resistance
8. Parex Base Coat
9. Skim Coat of Parex Masonry Veneer Adhesive
10. Parex Masonry Veneer Adhesive: High strength, setting bed mortar, used to adhere a variety of masonry veneers
11. Adhered Veneer<sup>‡</sup>  
Compatible with a variety of masonry veneers, from stone to tile and thin brick

## CODE COMPLIANCE

DOCUMENT	DESCRIPTION
ICC ESR-2526	Complies with IBC and IRC
ASTM E2568 / AC 235	Complies with requirements
ASTM E119	Does not detract from fire rating of base wall
NFPA 285 and 268	Acceptable on non-combustible construction
ICC-ESR 2045 (WeatherSeal)	WeatherSeal

*\*WeatherSeal can be used behind all claddings where more than one wall system is specified, creating one continuous AWRB system. This is appropriate whenever WaterMaster MVS CI is used with other cladding types on a multi-clad building.*

<sup>†</sup>Acceptable substrates:

*PermaBase® Cement Board and other cement boards conforming with ASTM C1325 (Type A - exterior); poured concrete/unit masonry; ASTM C1177 type sheathings, including Weather Defense™ Platinum sheathing, GreenGlass® sheathing, eXP™ sheathing, GlasRoc® sheathing, Securock™ glass-mat sheathing, and DensGlass® exterior sheathing; DensElement (sheathing only), gypsum sheathing (ASTM C79/C1396); Exposure I or exterior plywood (Grade C/D or better); or Exposure I OSB*

<sup>‡</sup>By other manufacturer



# PAREX MASONRY VENEER ADHESIVE

## MAXIMUM STRENGTH AND ADHESION

**High-strength and specially formulated, Parex Masonry Veneer Adhesive is a setting bed mortar used to adhere up to 15 lbs of natural and manufactured stone\*, ceramic tile†, and thin brick veneer‡ to a broad range of substrates. No mechanical fasteners required.**

- Complies with ANSI 118.4, the American National Standard Specifications for Modified Dry-Set Cement Mortar, sets a minimum standard for modified standard mortars
- Complies with ANSI 118.15, the American National Standard Specifications for Modified Dry-Set Cement Mortar, the most stringent freeze/thaw testing for polymer-modified mortars
- Freeze-thaw stable bond showing resistance to deterioration after repeated temperature cycling per ASTM C-666 (modified using full IVS composite in place of concrete beam)
- Fully tested per ASTM C109, Standard Test Method for Compressive Strength of Hydraulic Cement



*For complete application recommendations on the use of Parex Masonry Veneer Adhesive please review the Product Data Sheet.*

*\*Manufactured stone must comply with applicable requirements of ICC-ES Acceptance Criteria AC51 or ASTM C1670.*

*†Tile shall comply with applicable requirements of the Tile Council of North America and/or ANSI A137.1.*

*‡Thin brick veneer shall comply with applicable requirements of ASTM C 1088 or per the Brick Industry Association.*





Our most current General Sales Conditions shall apply.  
Please consult the Data Sheet prior to any use and processing

© 2025 Sika Corporation, 14001011 rev 04/2025

#### **Sika Corporation**

201 Polito Avenue

Lyndhurst, NJ 07071 USA

Customer Service (800) 433-9517

Technical Service (800) 243-6739

[usa.sika.com/parex](http://usa.sika.com/parex)

**BUILDING TRUST**

