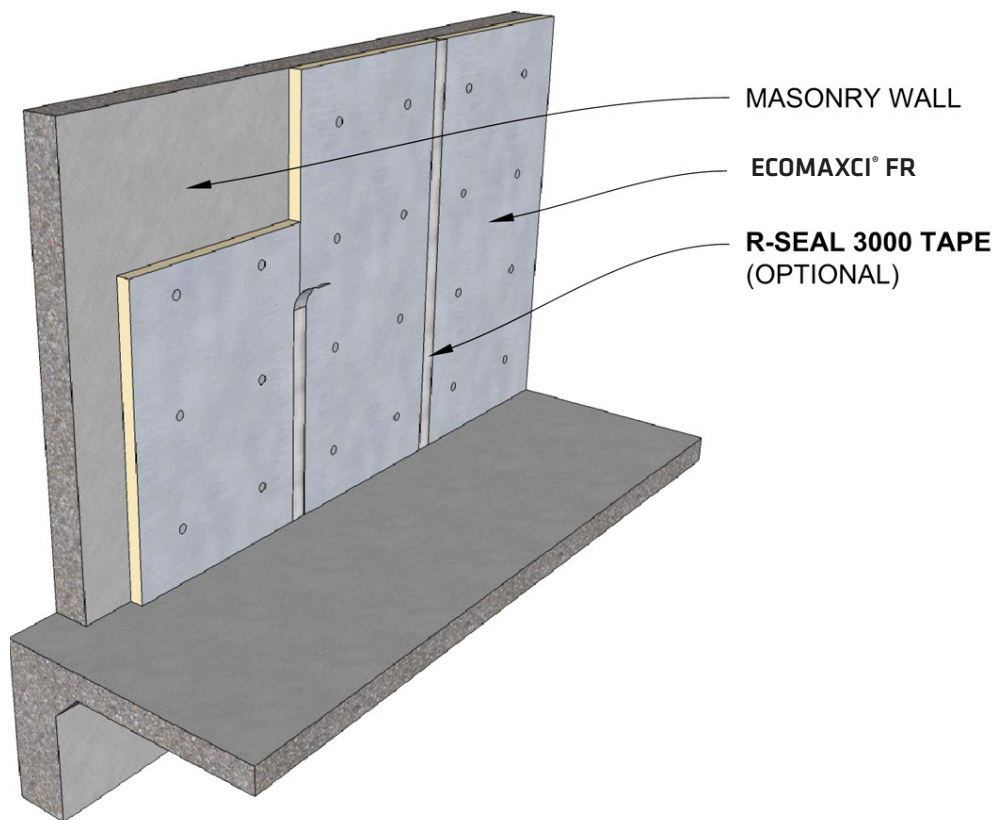


## ECOMAXCI® FR (REPLACES TSX-8500)

### MASONRY WALL APPLICATION

Rmax ECOMAXci® FR is applied to the interior face of concrete or concrete masonry to provide a layer of continuous insulation (ci) over the entire surface. It may be adhered or anchored directly to the concrete surface or attached to furring. Use Rmax PVC clips for an easy yet clean, professional installation. For example, ECOMAXci® FR is an excellent product for use in insulating block walls, standard cavity walls and the underside of slabs such as ceilings of parking structures. It can also be used in conjunction with tilt-up wall panels.

Refer to ECOMAXci® FR Product Data Sheet for additional application/installation, compliances, thermal and physical properties, limitations and warnings.



Warranty: See Rmax "Sales Policy" and "Fifteen Year Limited Thermal Warranty" for terms and conditions. Rmax does not assume any responsibility or liability for the performance of any products other than those manufactured by Rmax. **NOTE: All Rmax products must be tarped, placed on skids and kept dry before and throughout construction.**



BUILDING TRUST



PRODUCT APPLICATION SHEET  
ECOMAXCI® FR  
Revision.03-05-2020  
www.rmax.com  
(800) 527-0890