



Senergy[®]

Sentry Stucco Plus Wall System

Premium Cement Plaster Stucco with a Senershield
Fluid Applied Air/Water-Resistive Barrier

Typical Details

BUILDING TRUST



Sentry Stucco Plus Wall System

Typical Details

Table of Contents

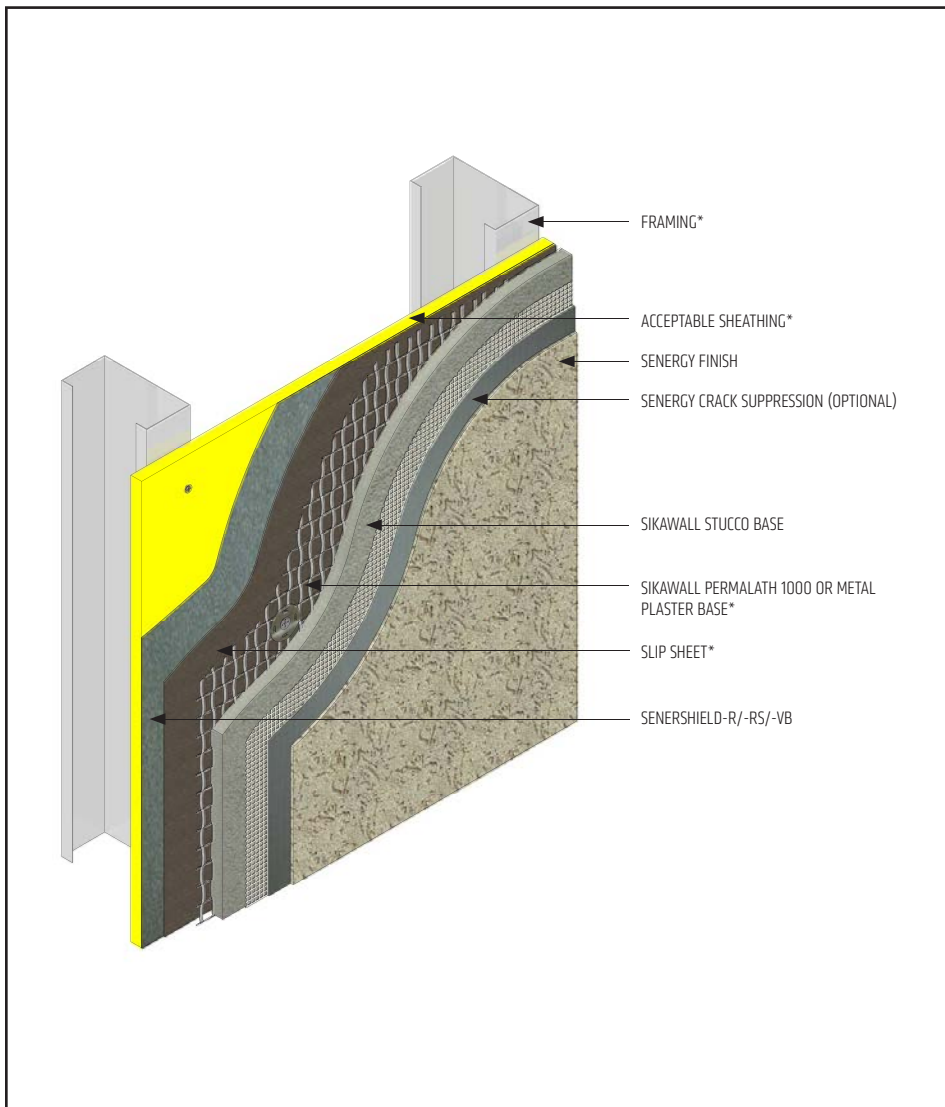
- | | |
|-----------------------------------|-------------------------------------|
| 1. Application over Steel Framing | 13. EPS Shape Application |
| 2. Application over Wood Framing | 14. Termination at Soffit/Gable End |
| 3. Application over CMU | 15. Termination at Foundation |
| 4. Surface Control Joint | 16. Kick-out Flashing |
| 5. Expansion Joint | 17. Termination at Deck |
| 6. Drainage at Floorline | 18. Coping |
| 7. Clad Window Jamb | 19. Corner Bead |
| 8. Clad Window Head | 20. Downspout Application |
| 9. Clad Window Sill | 21. Pipe Penetration |
| 10. Primed Window Head | 22. Light Fixture |
| 11. Primed Window Jamb | 23. Dryer Vent |
| 12. Primed Window Sill | |

Notes:

- **The details within are the latest recommendations and are represent in good faith by Sika Corporation US (hereinafter Sika). The details are subject to change without notice. Sika accepts no liability for the end use of the details. For conditions not shown, consult Sika for review of specific details.**
- **Install Sika materials in accordance with current installation instructions.**
- **Unsatisfactory conditions shall be reported to the General Contractor and corrected before the application of Sika products.**

Sentry Stucco Plus Wall System

TYPICAL APPLICATION OVER STEEL FRAMING



- Basic requirements for water-resistive barrier:
 - Senershield-R/-RS/-VB with one layer minimum Grade D as slip sheet.
 - Wood based sheathing requires two coats of Senershield-R/-RS/-VB prior to installation of slip sheet.
 - Comply with applicable local building code.
- Senergy Crack Suppression: Flexguard 4 or SikaWall SRT Mesh embedded in Senergy Base Coat or SikaWall Stucco Surface Leveler.

SSP-01 2401

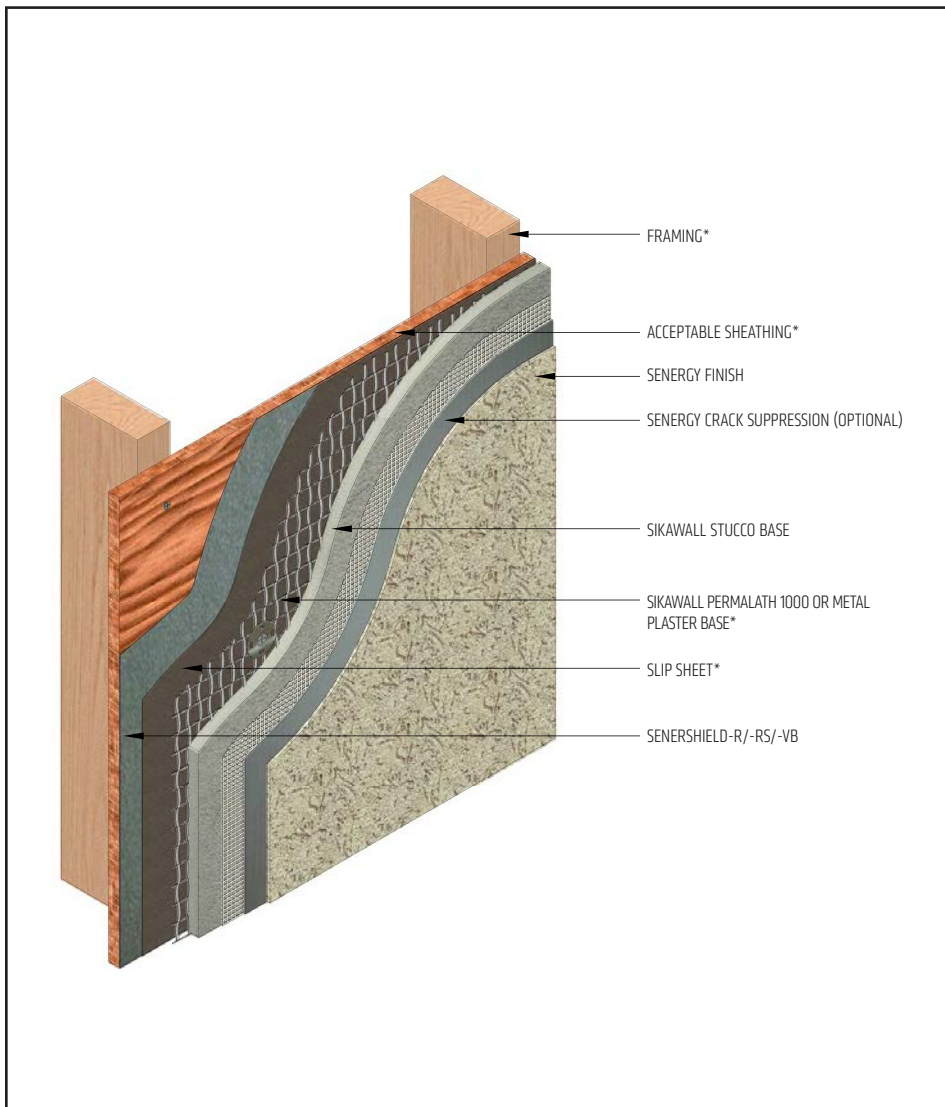
(*NOTE: BY OTHERS)

The details within are latest recommendations and are represent in good faith by Sika Corporation US (hereinafter Sika). The details are subject to change without notice. Sika accepts no liability for the end use of the details. For conditions not shown, consult Sika for review of specific details.

- Install Sika materials in accordance with current installation instructions.
- Unsatisfactory conditions shall be reported to the General Contractor and corrected before the application of Sika products.

Sentry Stucco Plus Wall System

TYPICAL APPLICATION OVER WOOD FRAMING



- Basic requirements for water-resistive barrier:
 - Senershield-R/-RS/-VB with one layer minimum Grade D as slip sheet.
 - Wood based sheathing requires two coats of Senershield-R/-RS/-VB prior to installation of slip sheet.
 - Comply with applicable local building code.
- Senergy Crack Suppression: Flexguard 4 or SikaWall SRT Mesh embedded in Senergy Base Coat or SikaWall Stucco Surface Leveler.

SSP-02 2401

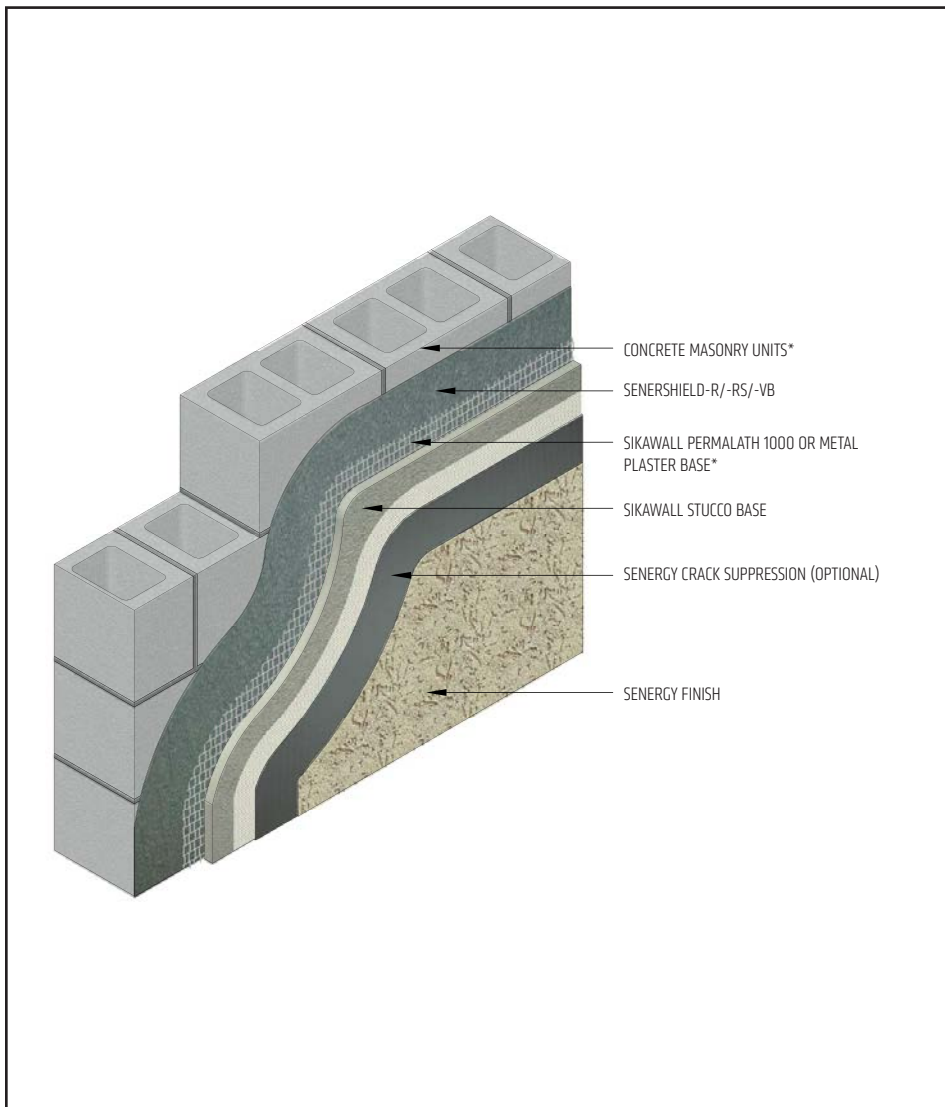
(*NOTE: BY OTHERS)

The details within are latest recommendations and are represent in good faith by Sika Corporation US (hereinafter Sika). The details are subject to change without notice. Sika accepts no liability for the end use of the details. For conditions not shown, consult Sika for review of specific details.

- Install Sika materials in accordance with current installation instructions.
- Unsatisfactory conditions shall be reported to the General Contractor and corrected before the application of Sika products.

Sentry Stucco Plus Wall System

TYPICAL APPLICATION OVER CMU



- Basic requirements for water-resistive barrier:
 - Senershield-R/-RS/-VB with one layer minimum Grade D as slip sheet.
 - Multiple coats of Senershield-R/-RS/-VB may be required to achieve a pinhole free application.
 - Comply with applicable local building code.
- Senergy Crack Suppression: Flexguard 4 or SikaWall SRT Mesh embedded in Senergy Base Coat or SikaWall Stucco Surface Leveler.

SSP-03 2401

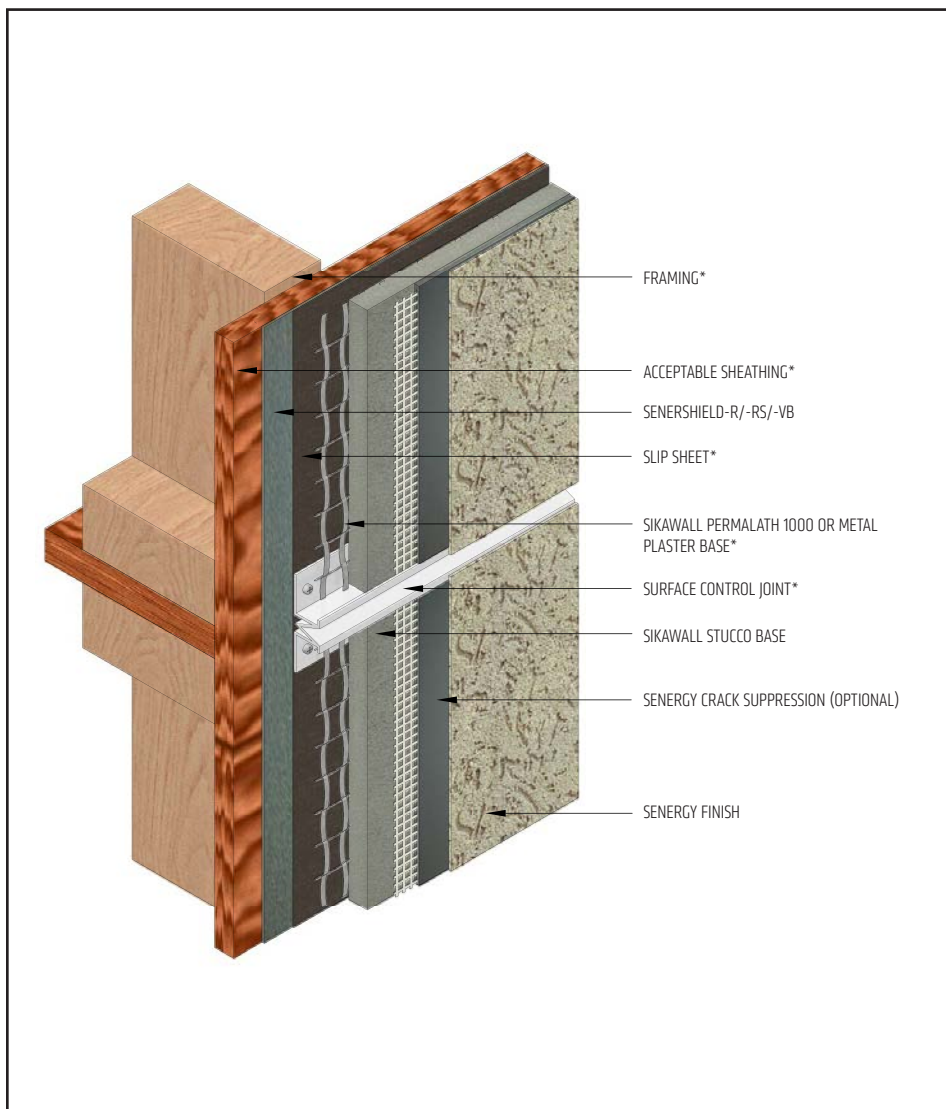
(*NOTE: BY OTHERS)

The details within are latest recommendations and are represent in good faith by Sika Corporation US (hereinafter Sika). The details are subject to change without notice. Sika accepts no liability for the end use of the details. For conditions not shown, consult Sika for review of specific details.

- Install Sika materials in accordance with current installation instructions.
- Unsatisfactory conditions shall be reported to the General Contractor and corrected before the application of Sika products.

Sentry Stucco Plus Wall System

TYPICAL SURFACE CONTROL JOINT



- Install all materials in accordance with installation instructions and applicable code.
- Provide control joints at a maximum 144 sq.ft. (13.4 sq. m.) and placement as determined by the design professional.
- Install per requirements of ASTM C1063.
- Lath must be broken at the joint accessory.
- Senergy Crack Suppression: Flexguard 4 or SikaWall SRT Mesh embedded in Senergy Base Coat or SikaWall Stucco Surface Leveler.

SSP-04 2401

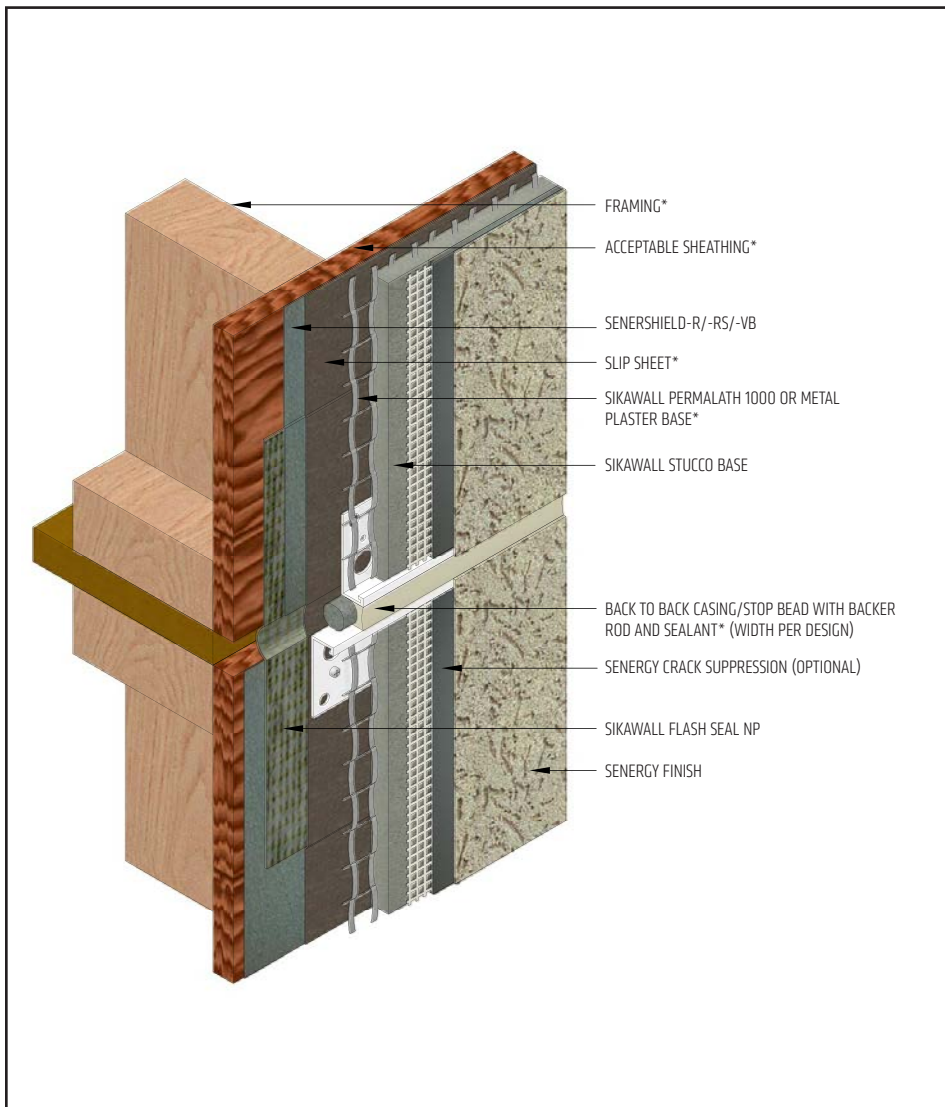
(*NOTE: BY OTHERS)

The details within are latest recommendations and are represent in good faith by Sika Corporation US (hereinafter Sika). The details are subject to change without notice. Sika accepts no liability for the end use of the details. For conditions not shown, consult Sika for review of specific details.

- Install Sika materials in accordance with current installation instructions.
- Unsatisfactory conditions shall be reported to the General Contractor and corrected before the application of Sika products.

Sentry Stucco Plus Wall System

TYPICAL EXPANSION JOINT



SSP-05 2401

(*NOTE: BY OTHERS)

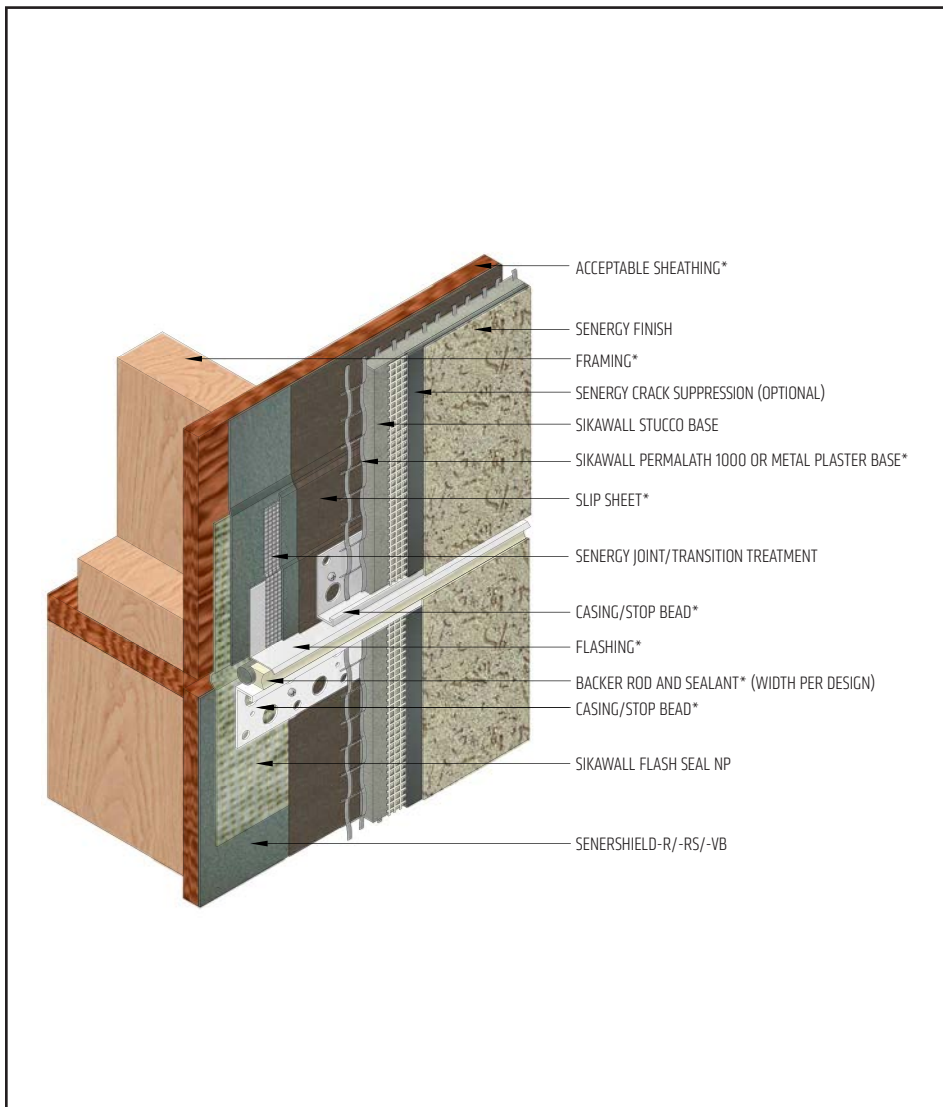
- Typical locations for system expansion joints are at building expansion joints, at prefabricated panel joints, floor lines of wood frame construction or where slip tracks are used in steel frame construction, where substrates change and where structural movement is anticipated. It is the sole responsibility of the project design team, including the architect, engineer, etc., to ultimately determine specific expansion joint placement, width and design. Detail specific locations in construction drawings.
- Install per requirements of ASTM C1063.
- Lath must be broken at the joint accessory.
- Senergy Crack Suppression: Flexguard 4 or SikaWall SRT Mesh embedded in Senergy Base Coat or SikaWall Stucco Surface Leveler.
- Reference *Acceptable Sealants for use with Senergy Wall Systems* Technical Bulletin for a list of sealants.
- Provide sufficient slack in SikaWall Flash Seal NP at expansion joint to allow for movement.

The details within are latest recommendations and are represent in good faith by Sika Corporation US (hereinafter Sika). The details are subject to change without notice. Sika accepts no liability for the end use of the details. For conditions not shown, consult Sika for review of specific details.

- Install Sika materials in accordance with current installation instructions.
- Unsatisfactory conditions shall be reported to the General Contractor and corrected before the application of Sika products.

Sentry Stucco Plus Wall System

TYPICAL DRAINAGE AT FLOORLINE



SSP-06 2401

(*NOTE: BY OTHERS)

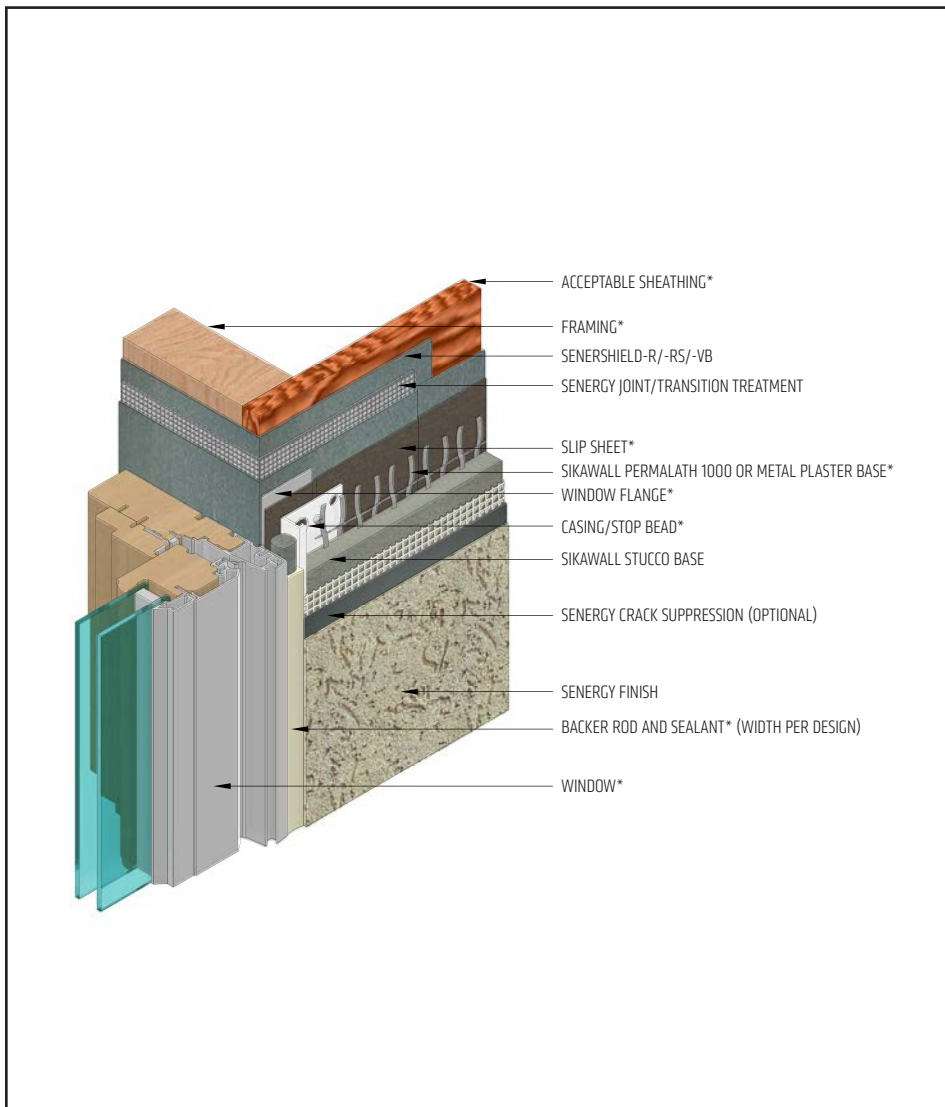
- Install Senergy air/water-resistive barrier up and behind flashing.
- Apply Senergy transition treatment over flashing prior to casing/stop bead installation.
- Provide end-dams at flashing terminations as required.
- Lath must be broken at the joint accessory.
- It is recommended that a means for drainage is provided at every floor.
- Senergy Crack Suppression: Flexguard 4 or SikaWall SRT Mesh embedded in Senergy Base Coat or SikaWall Stucco Surface Leveler.
- Senergy Joint/Transition Treatment Options: SikaWall MaxFlash, SikaWall Sheathing Fabric embedded in Senershield-R/-RS/-VB or SikaWall Flash Seal NP.
- Provide sufficient slack in SikaWall Flash Seal NP at expansion joint to allow for movement.
- Typical locations for system expansion joints are at building expansion joints, at prefabricated panel joints, floor lines of wood frame construction or where slip tracks are used in steel frame construction, where substrates change and where structural movement is anticipated. It is the sole responsibility of the project design team, including the architect, engineer, etc., to ultimately determine specific expansion joint placement, width and design. Detail specific locations in construction drawings.

The details within are latest recommendations and are represent in good faith by Sika Corporation US (hereinafter Sika). The details are subject to change without notice. Sika accepts no liability for the end use of the details. For conditions not shown, consult Sika for review of specific details.

- Install Sika materials in accordance with current installation instructions.
- Unsatisfactory conditions shall be reported to the General Contractor and corrected before the application of Sika products.

Sentry Stucco Plus Wall System

TYPICAL CLAD WINDOW – JAMB



- Prior to window and lath installation, ensure water-resistive barrier is properly applied into the rough openings in accordance with Senergy application guidelines and code requirements. Reference Senergy Senershield published typical details for further information.
- Senergy Crack Suppression: Flexguard 4 or SikaWall SRT Mesh embedded in Senergy Base Coat or SikaWall Stucco Surface Leveler.
- Senergy Joint/Transition Treatment Options: SikaWall MaxFlash, SikaWall Sheathing Fabric embedded in Senershield-R/-RS/-VB or SikaWall Flash Seal NP.
- Consult window and sealant manufacturers to verify window installation, detailing and to ensure no water leakage into the wall assembly.

SSP-07 2401

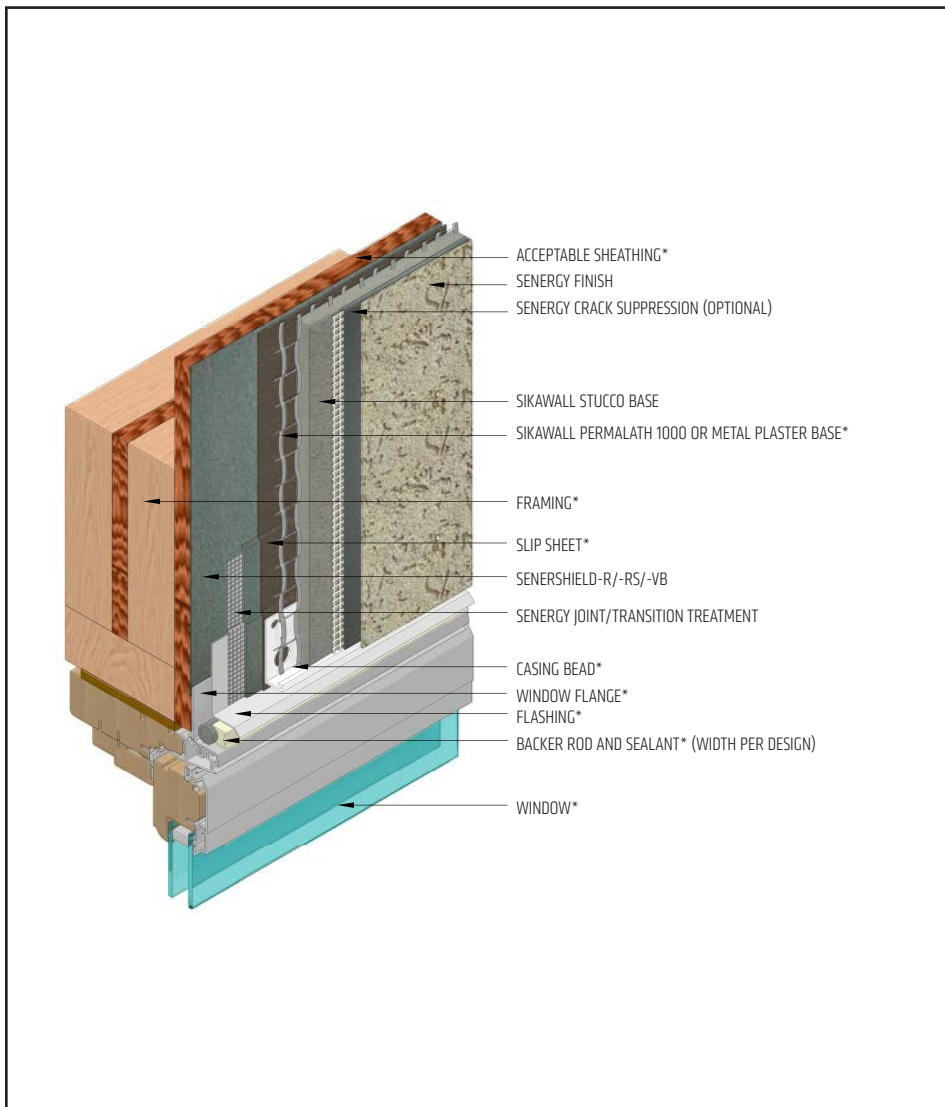
(*NOTE: BY OTHERS)

The details within are latest recommendations and are represent in good faith by Sika Corporation US (hereinafter Sika). The details are subject to change without notice. Sika accepts no liability for the end use of the details. For conditions not shown, consult Sika for review of specific details.

- Install Sika materials in accordance with current installation instructions.
- Unsatisfactory conditions shall be reported to the General Contractor and corrected before the application of Sika products.

Sentry Stucco Plus Wall System

TYPICAL CLAD WINDOW - HEAD



- Prior to window and lath installation, ensure water-resistive barrier is properly applied to the rough openings in accordance with Senergy application guidelines and code requirements. Reference Senergy Senershield published typical details for further information.
- Provide end-dams at flashing terminations.
- Senergy Joint/Transition Treatment Options: SikaWall MaxFlash, SikaWall Sheathing Fabric embedded in Senershield-R/-RS/-VB or SikaWall Flash Seal NP.
- Senergy Crack Suppression: Flexguard 4 or SikaWall SRT Mesh embedded in Senergy Base Coat or SikaWall Stucco Surface Leveler.

SSP-08 2401

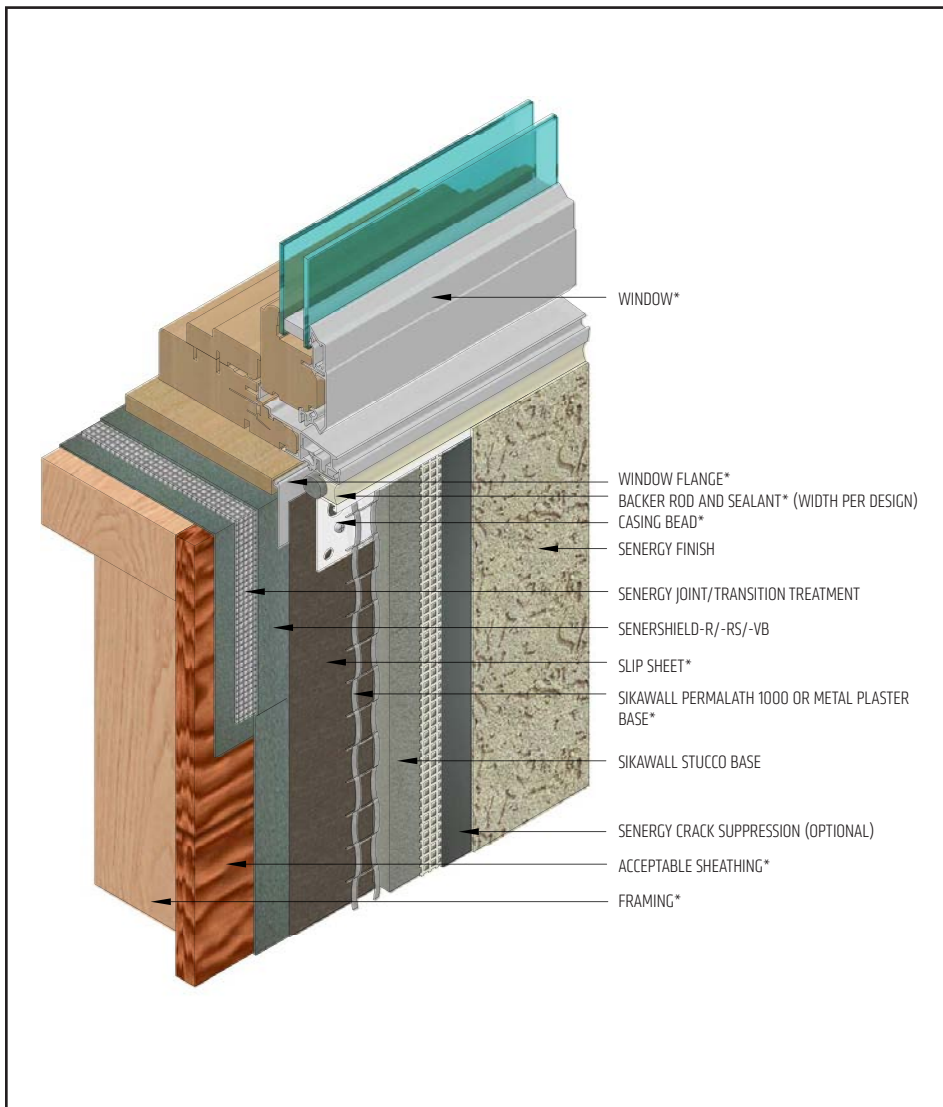
(*NOTE: BY OTHERS)

The details within are latest recommendations and are represent in good faith by Sika Corporation US (hereinafter Sika). The details are subject to change without notice. Sika accepts no liability for the end use of the details. For conditions not shown, consult Sika for review of specific details.

- Install Sika materials in accordance with current installation instructions.
- Unsatisfactory conditions shall be reported to the General Contractor and corrected before the application of Sika products.

Sentry Stucco Plus Wall System

TYPICAL CLAD WINDOW – SILL



- Prior to window and lath installation, ensure water-resistive barrier is properly applied into the rough openings in accordance with Senergy application guidelines and code requirements. Reference Senergy Senershield published typical details for further information.
- Senergy Joint/Transition Treatment Options: SikaWall MaxFlash, SikaWall Sheathing Fabric embedded in Senershield-R/-RS/-VB or SikaWall Flash Seal NP.
- Senergy Crack Suppression: Flexguard 4 or SikaWall SRT Mesh embedded in Senergy Base Coat or SikaWall Stucco Surface Leveler.

SSP-09 2401

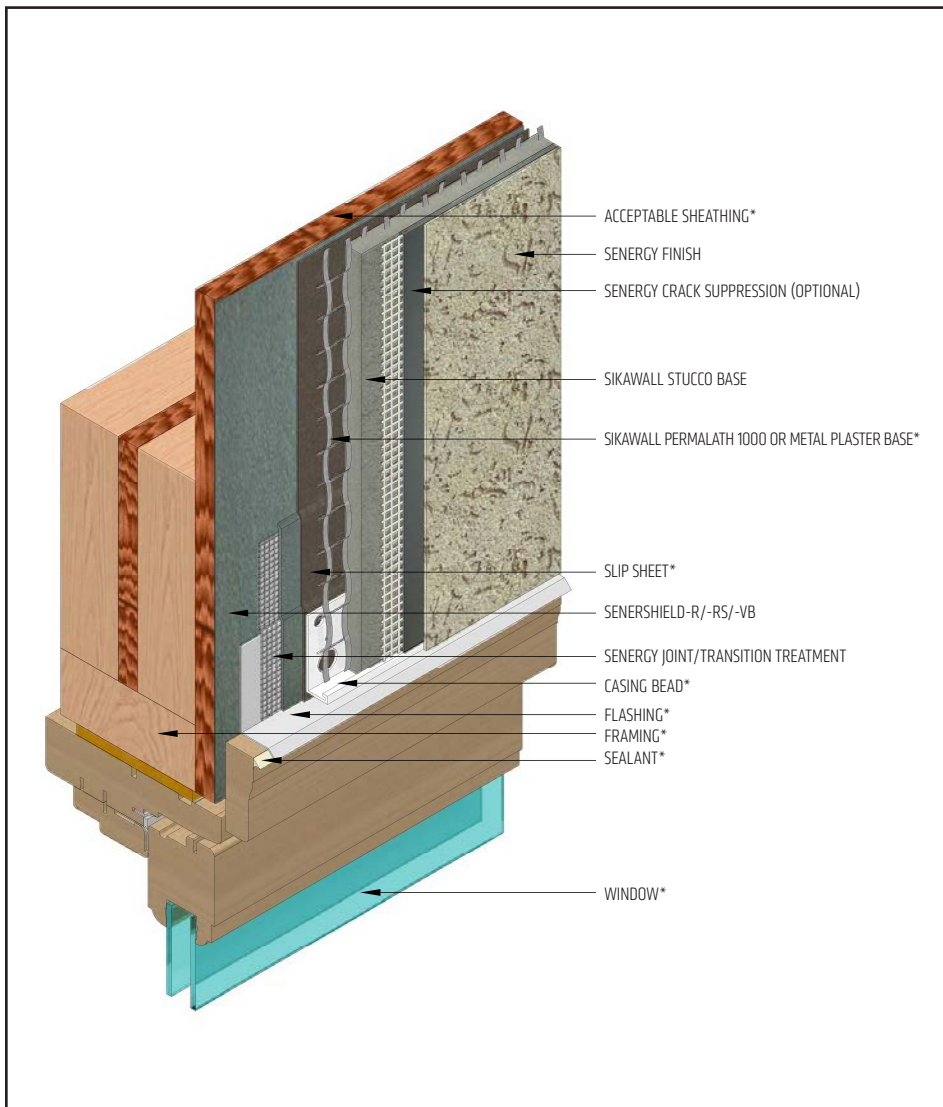
(*NOTE: BY OTHERS)

The details within are latest recommendations and are represent in good faith by Sika Corporation US (hereinafter Sika). The details are subject to change without notice. Sika accepts no liability for the end use of the details. For conditions not shown, consult Sika for review of specific details.

- Install Sika materials in accordance with current installation instructions.
- Unsatisfactory conditions shall be reported to the General Contractor and corrected before the application of Sika products.

Sentry Stucco Plus Wall System

TYPICAL PRIMED WINDOW - HEAD



- Prior to window and lath installation, ensure water-resistive barrier is properly applied into the rough openings in accordance with Senergy application guidelines and code requirements. Reference Senergy Senershield published typical details for further information.
- Provide end-dams at flashing terminations.
- Senergy Joint/Transition Treatment Options: SikaWall MaxFlash, SikaWall Sheathing Fabric embedded in Senershield-R/-RS/-VB or SikaWall Flash Seal NP.
- Senergy Crack Suppression: Flexguard 4 or SikaWall SRT Mesh embedded in Senergy Base Coat or SikaWall Stucco Surface Leveler.

SSP-10 2401

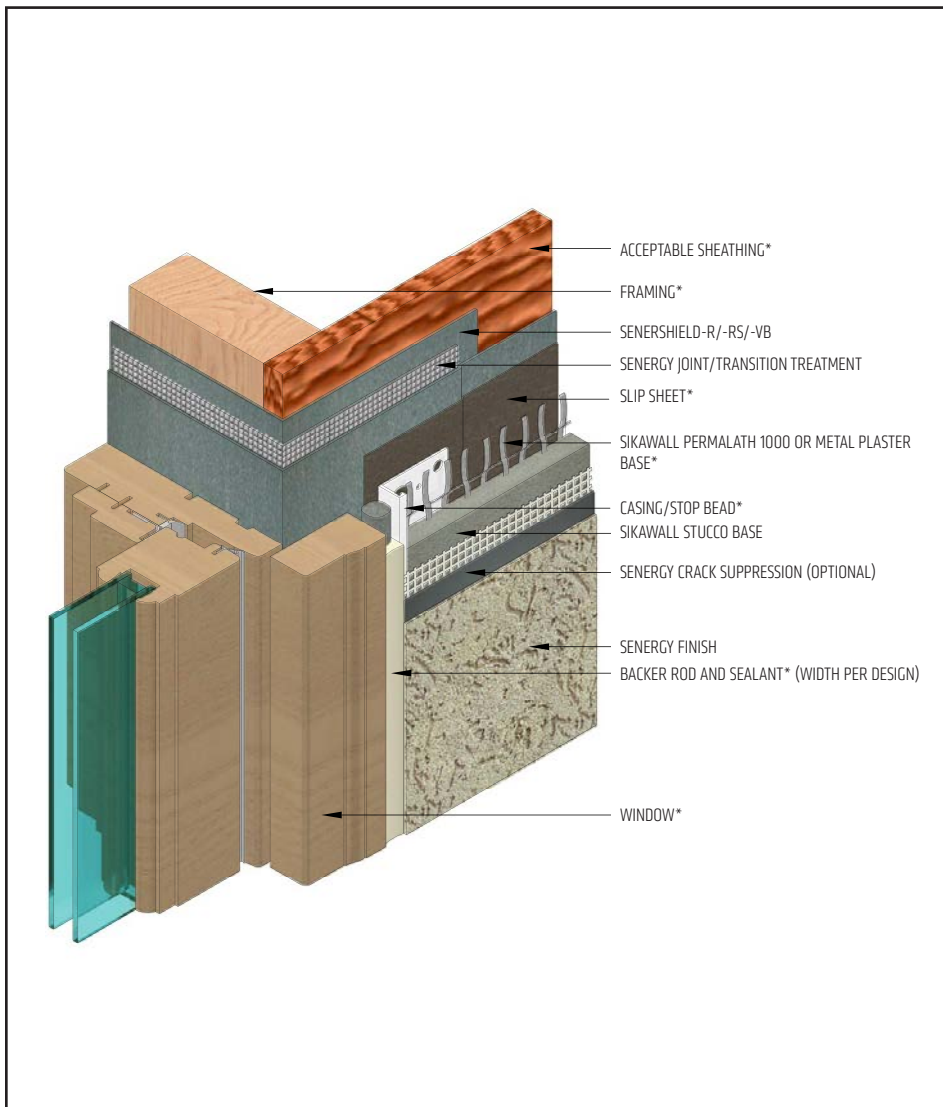
(*NOTE: BY OTHERS)

The details within are latest recommendations and are represent in good faith by Sika Corporation US (hereinafter Sika). The details are subject to change without notice. Sika accepts no liability for the end use of the details. For conditions not shown, consult Sika for review of specific details.

- Install Sika materials in accordance with current installation instructions.
- Unsatisfactory conditions shall be reported to the General Contractor and corrected before the application of Sika products.

Sentry Stucco Plus Wall System

TYPICAL PRIMED WINDOW – JAMB



- Prior to window and lath installation, ensure water-resistive barrier is properly applied to the rough openings in accordance with Senergy application guidelines and code requirements. Reference Senergy Senershield published typical details for further information.
- Senergy Joint/Transition Treatment Options: SikaWall MaxFlash, SikaWall Sheathing Fabric embedded in Senershield-R/-RS/-VB or SikaWall Flash Seal NP.
- Senergy Crack Suppression: Flexguard 4 or SikaWall SRT Mesh embedded in Senergy Base Coat or SikaWall Stucco Surface Leveler.
- Consult window and sealant manufacturers to verify window installation, detailing and to ensure no water leakage into the wall assembly.

SSP-11 2401

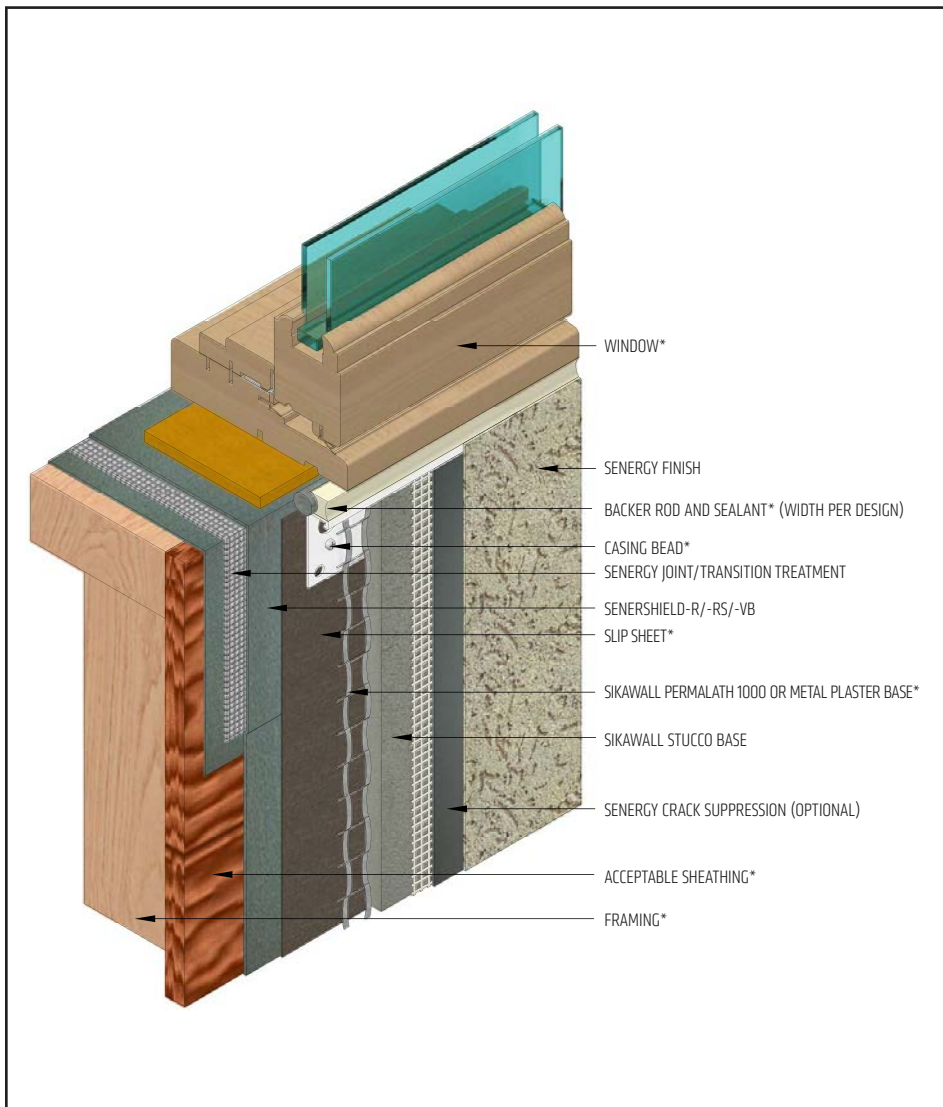
(*NOTE: BY OTHERS)

The details within are latest recommendations and are represent in good faith by Sika Corporation US (hereinafter Sika). The details are subject to change without notice. Sika accepts no liability for the end use of the details. For conditions not shown, consult Sika for review of specific details.

- Install Sika materials in accordance with current installation instructions.
- Unsatisfactory conditions shall be reported to the General Contractor and corrected before the application of Sika products.

Sentry Stucco Plus Wall System

TYPICAL PRIMED WINDOW – SILL



- Prior to window and lath installation, ensure water-resistive barrier is properly applied to the rough openings in accordance with Senergy application guidelines and code requirements. Reference Senergy Senershield published typical details for further information.
- Senergy Joint/Transition Treatment Options: SikaWall MaxFlash, SikaWall Sheathing Fabric embedded in Senershield-R/-RS/-VB or SikaWall Flash Seal NP.
- Senergy Crack Suppression: Flexguard 4 or SikaWall SRT Mesh embedded in Senergy Base Coat or SikaWall Stucco Surface Leveler.
- Consult window and sealant manufacturers to verify window installation, detailing and to ensure no water leakage into the wall assembly.

SSP-12 2401

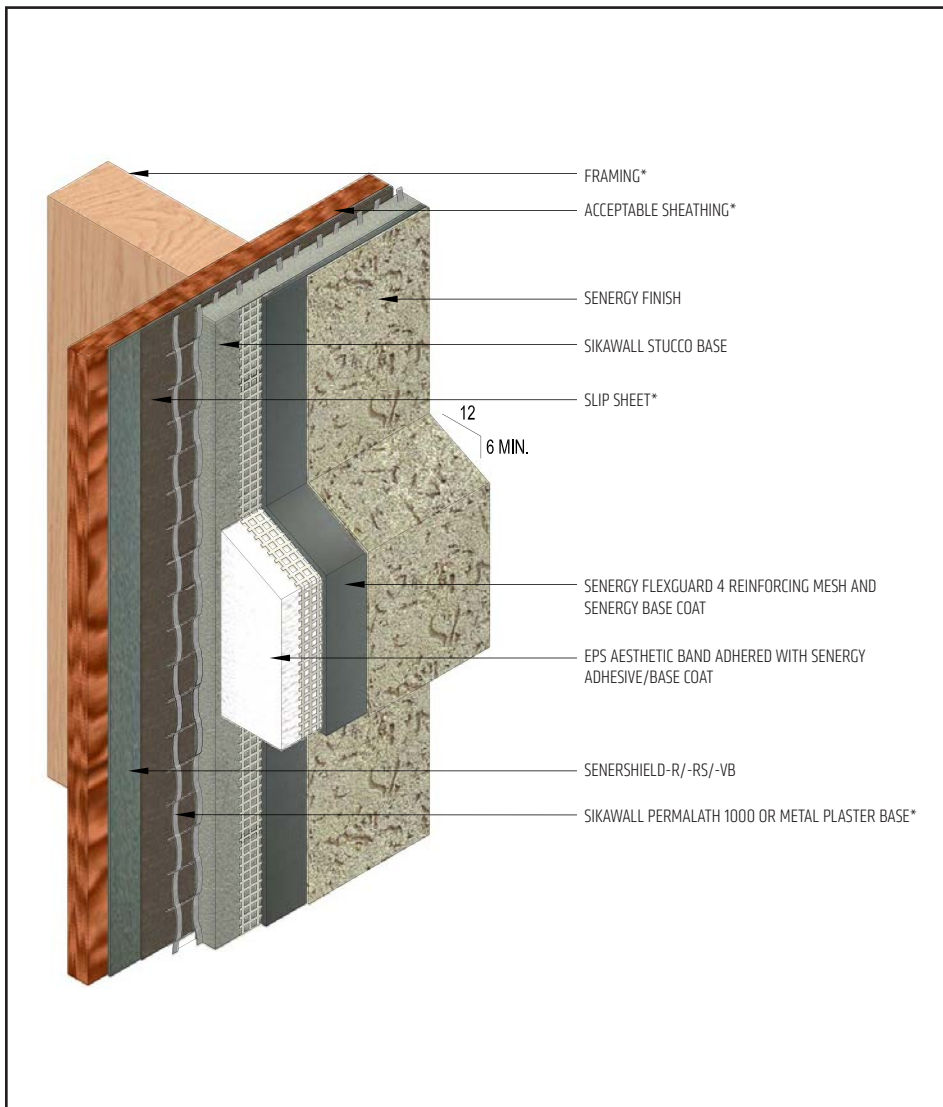
(*NOTE: BY OTHERS)

The details within are latest recommendations and are represent in good faith by Sika Corporation US (hereinafter Sika). The details are subject to change without notice. Sika accepts no liability for the end use of the details. For conditions not shown, consult Sika for review of specific details.

- Install Sika materials in accordance with current installation instructions.
- Unsatisfactory conditions shall be reported to the General Contractor and corrected before the application of Sika products.

Sentry Stucco Plus Wall System

TYPICAL EPS SHAPE APPLICATION



- Overlap reinforced base coat onto SikaWall Stucco Base a minimum of 3" (76 mm).
- On horizontal projections greater than 1" (25 mm) maintain a minimum 6:12 slope. For sloped surfaces over 24" (340mm), a roofing system or a metal cap flashing is required.

SSP-13 2401

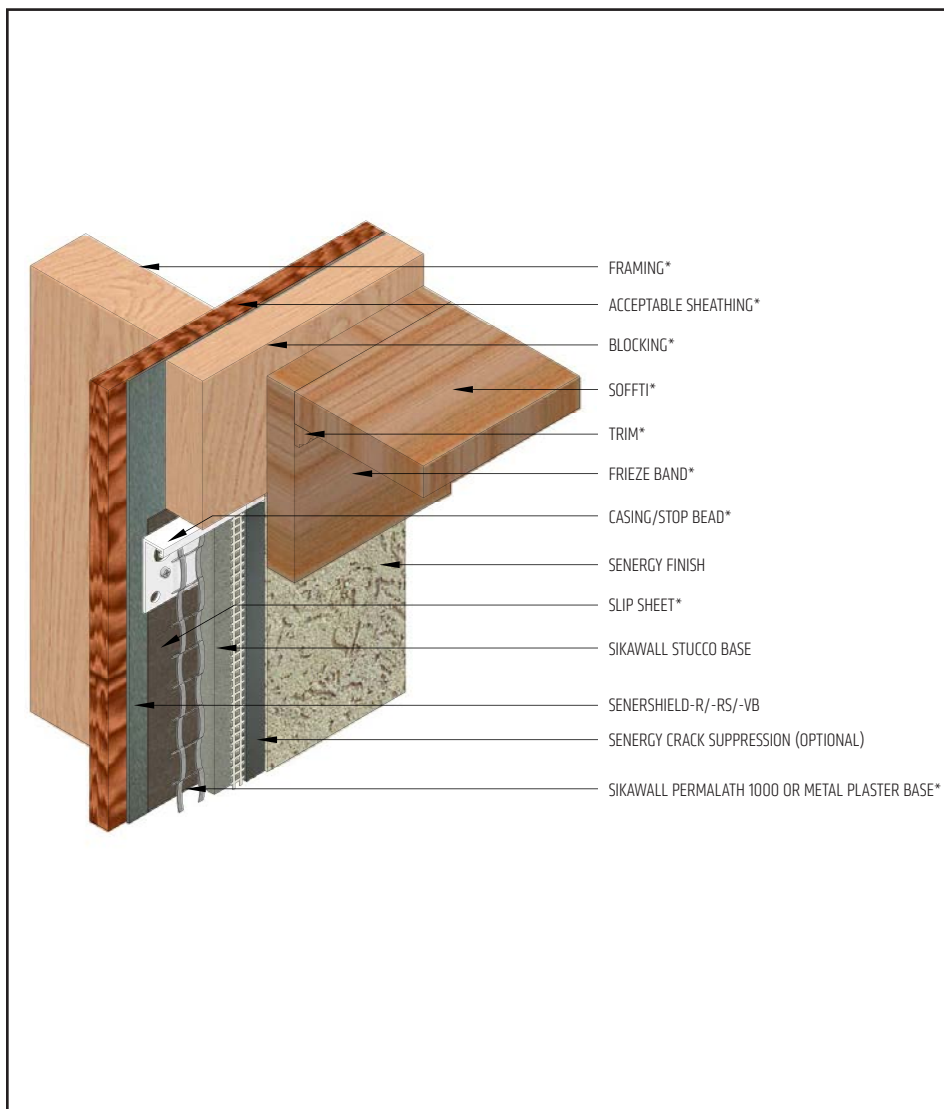
(*NOTE: BY OTHERS)

The details within are latest recommendations and are represent in good faith by Sika Corporation US (hereinafter Sika). The details are subject to change without notice. Sika accepts no liability for the end use of the details. For conditions not shown, consult Sika for review of specific details.

- Install Sika materials in accordance with current installation instructions.
- Unsatisfactory conditions shall be reported to the General Contractor and corrected before the application of Sika products.

Sentry Stucco Plus Wall System

TYPICAL TERMINATION AT SOFFIT/GABLE END



- Lap frieze band a minimum of 2" (50 mm) over the Sentry Stucco Plus Wall System.
- Senergy Crack Suppression: Flexguard 4 or SikaWall SRT Mesh embedded in Senergy Base Coat or SikaWall Stucco Surface Leveler.

SSP-14 2401

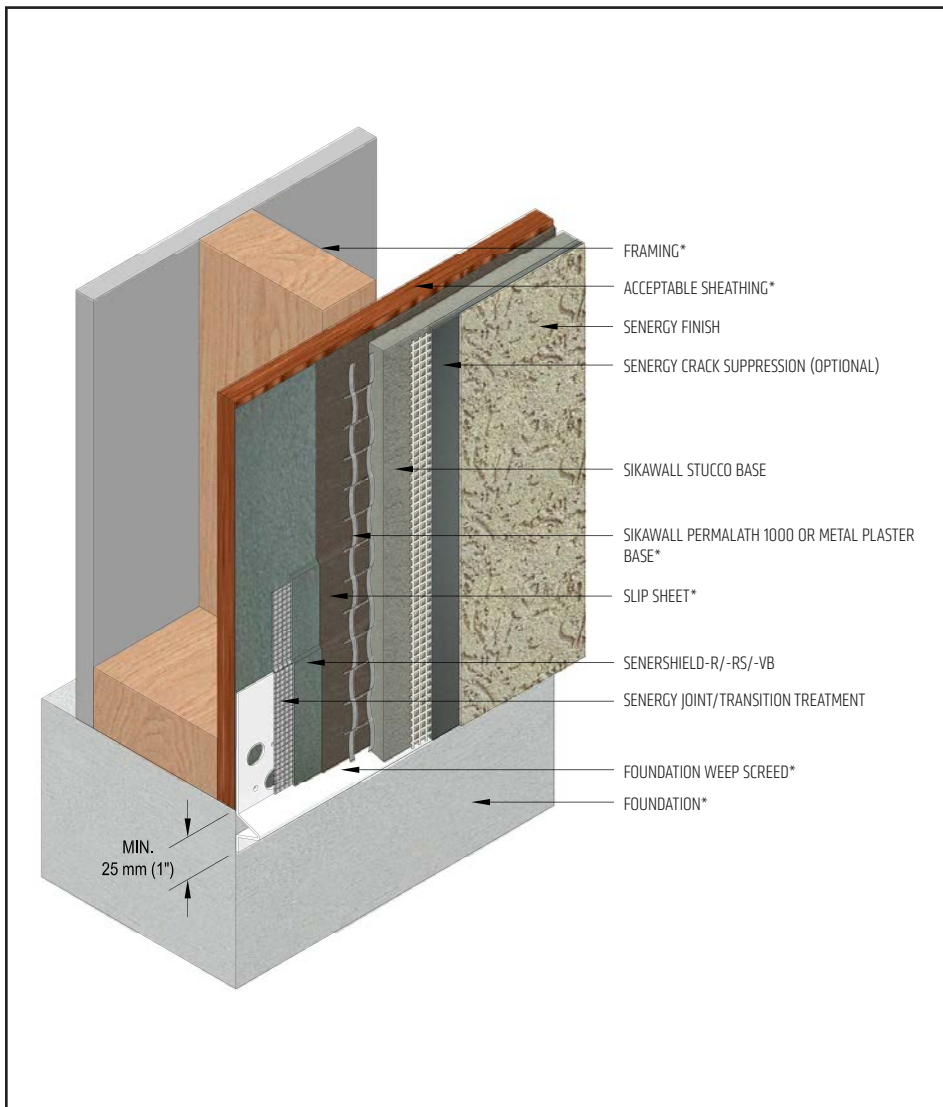
(*NOTE: BY OTHERS)

The details within are latest recommendations and are represent in good faith by Sika Corporation US (hereinafter Sika). The details are subject to change without notice. Sika accepts no liability for the end use of the details. For conditions not shown, consult Sika for review of specific details.

- Install Sika materials in accordance with current installation instructions.
- Unsatisfactory conditions shall be reported to the General Contractor and corrected before the application of Sika products.

Sentry Stucco Plus Wall System

TYPICAL TERMINATION AT FOUNDATION



- Per ASTM C1063 terminate the stucco wall system a minimum of 4" (100 mm) above raw earth and 2" (50 mm) above paved surface.
- Apply Senergy transition treatment over weep screed flange prior to lath installation.
- Senergy Crack Suppression: Flexguard 4 or SikaWall SRT Mesh embedded in Senergy Base Coat or SikaWall Stucco Surface Leveler.
- Senergy Joint/Transition Treatment Options: SikaWall MaxFlash, SikaWall Sheathing Fabric embedded in Senershield-R/-RS/-VB or SikaWall Flash Seal NP.

SSP-15 2401

(*NOTE: BY OTHERS)

The details within are latest recommendations and are represent in good faith by Sika Corporation US (hereinafter Sika). The details are subject to change without notice. Sika accepts no liability for the end use of the details. For conditions not shown, consult Sika for review of specific details.

- Install Sika materials in accordance with current installation instructions.
- Unsatisfactory conditions shall be reported to the General Contractor and corrected before the application of Sika products.

Sentry Stucco Plus Wall System

TYPICAL KICK-OUT FLASHING



- Terminate stucco wall system a minimum of 2" (50 mm) above sloped roof.
- Ensure step flashing is a minimum 2" (50 mm) behind Sentry Stucco Plus Wall System.
- Kick-out flashing shall be a minimum 4" (100 mm) in height.
- Kick-out flashing shall be angled a minimum 100° with seams sealed or soldered.
- Ensure a means for drainage is provided at system termination at roof.
- Senergy Crack Suppression: Flexguard 4 or SikaWall SRT Mesh embedded in Senergy Base Coat or SikaWall Stucco Surface Leveler.
- Senergy Joint/Transition Treatment Options: SikaWall MaxFlash, SikaWall Sheathing Fabric embedded in Senershield-R/-RS/-VB or SikaWall Flash Seal NP.
- Apply Senergy transition treatment over casing bead flange prior to lath installation.

SSP-16 2401

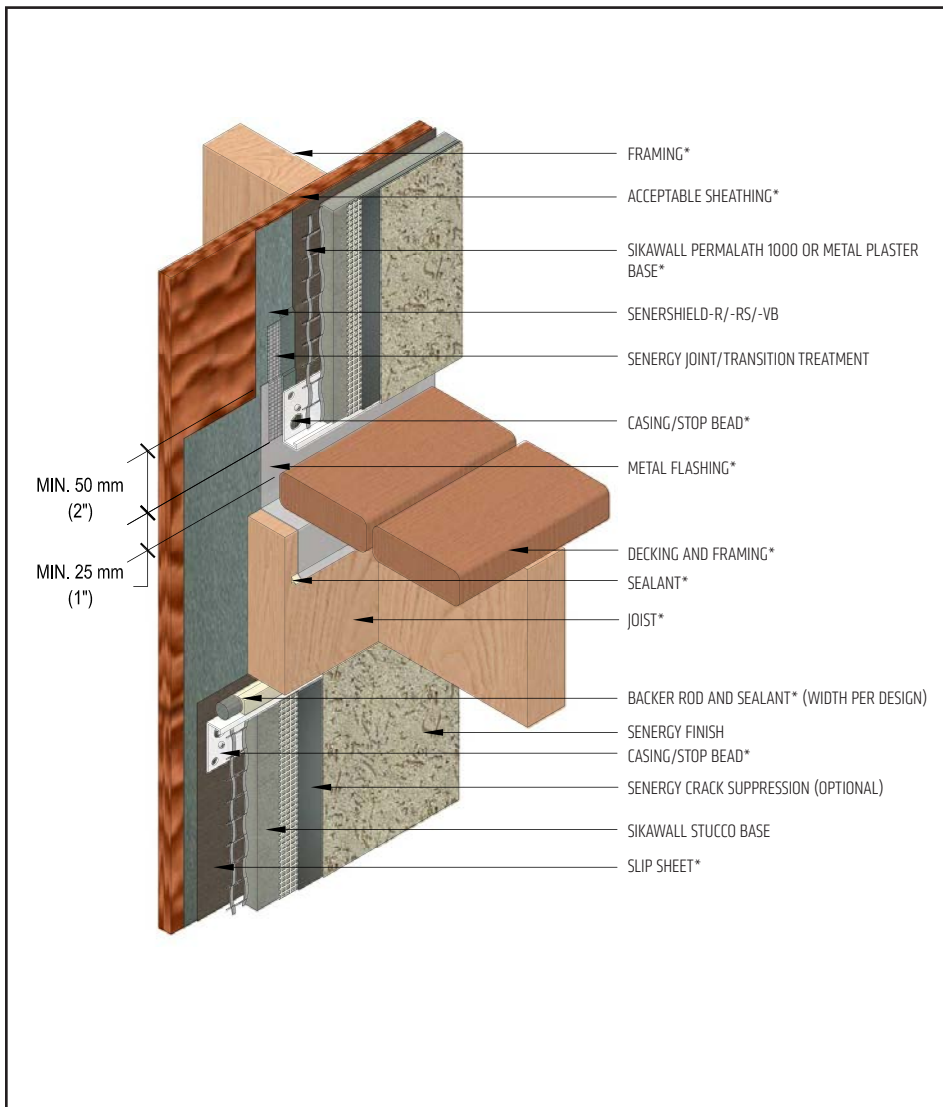
(*NOTE: BY OTHERS)

The details within are latest recommendations and are represent in good faith by Sika Corporation US (hereinafter Sika). The details are subject to change without notice. Sika accepts no liability for the end use of the details. For conditions not shown, consult Sika for review of specific details.

- Install Sika materials in accordance with current installation instructions.
- Unsatisfactory conditions shall be reported to the General Contractor and corrected before the application of Sika products.

Sentry Stucco Plus Wall System

TYPICAL TERMINATION AT DECK



- Apply Senergy transition treatment over flashing.
- Install Senergy air/water-resistive barrier up and behind flashing.
- Provide end-dams at flashing terminations as required.
- Senergy Crack Suppression: Flexguard 4 or SikaWall SRT Mesh embedded in Senergy Base Coat or SikaWall Stucco Surface Leveler.
- Senergy Joint/Transition Treatment Options: SikaWall MaxFlash, SikaWall Sheathing Fabric embedded in Senersshield-R/-RS/-VB or SikaWall Flash Seal NP.

SSP-17 2401

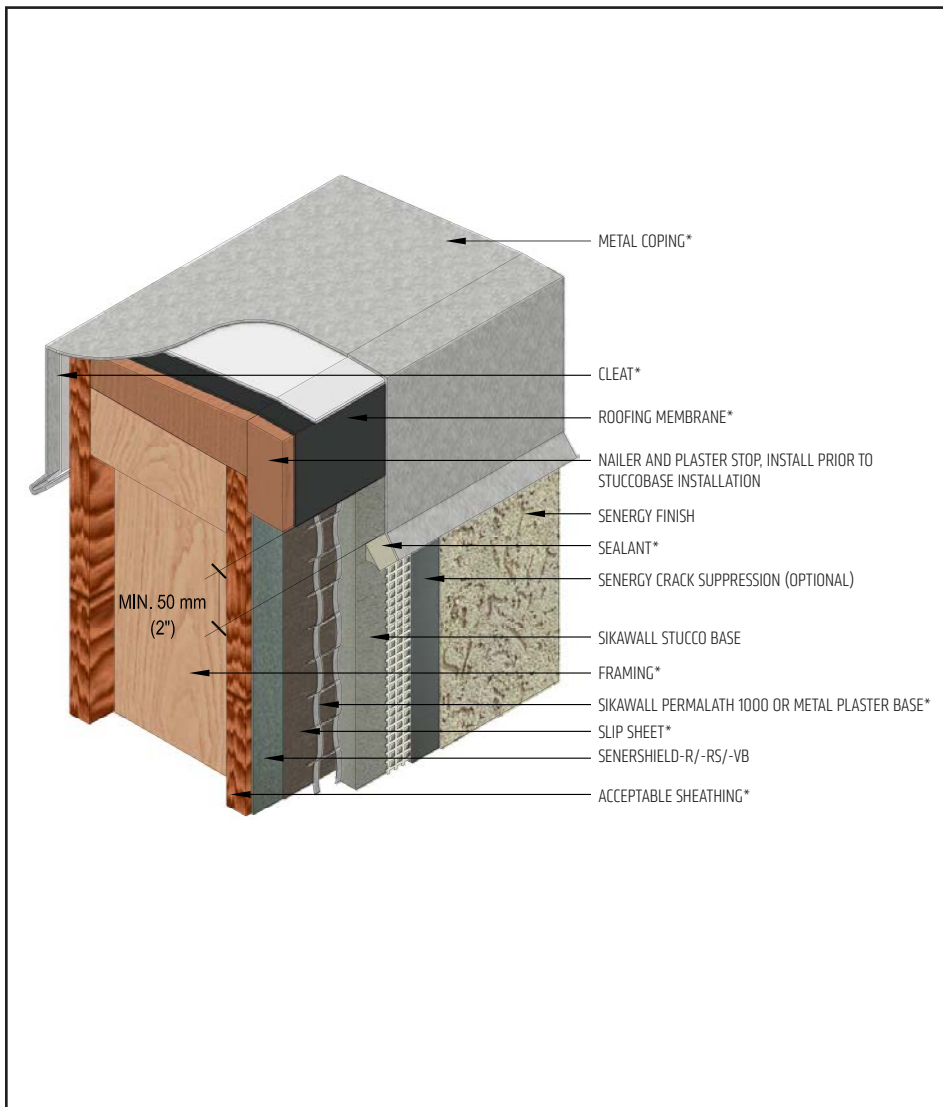
(*NOTE: BY OTHERS)

The details within are latest recommendations and are represent in good faith by Sika Corporation US (hereinafter Sika). The details are subject to change without notice. Sika accepts no liability for the end use of the details. For conditions not shown, consult Sika for review of specific details.

- Install Sika materials in accordance with current installation instructions.
- Unsatisfactory conditions shall be reported to the General Contractor and corrected before the application of Sika products.

Sentry Stucco Plus Wall System

TYPICAL COPING



- Extend coping a minimum of 2" (50 mm) on to face of Sentry Stucco Plus Wall System and seal drip edge.
- Extend Senersshield-R/-RS/-VB or SikaWall MaxFlash onto bottom of blocking or provide alternate air seal at sheathing termination to blocking.

SSP-18 2401

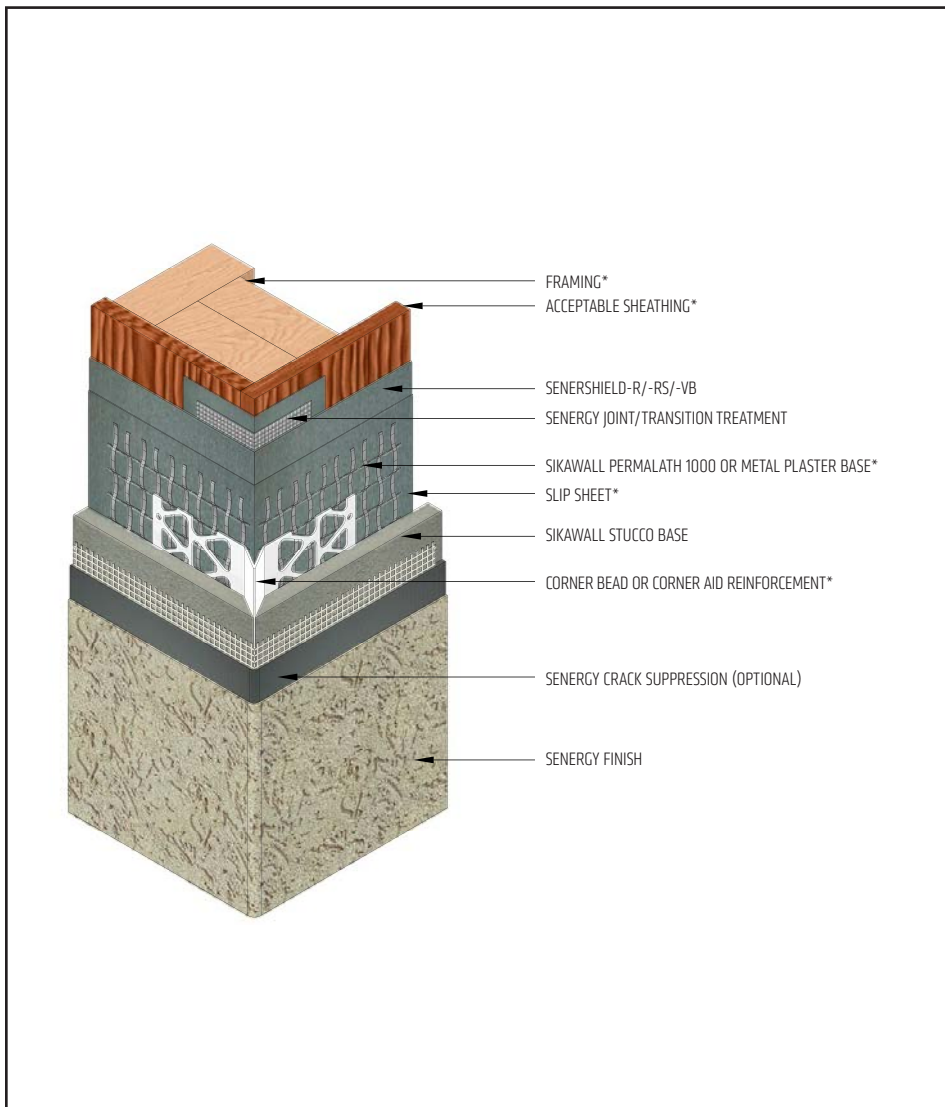
(*NOTE: BY OTHERS)

The details within are latest recommendations and are represent in good faith by Sika Corporation US (hereinafter Sika). The details are subject to change without notice. Sika accepts no liability for the end use of the details. For conditions not shown, consult Sika for review of specific details.

- Install Sika materials in accordance with current installation instructions.
- Unsatisfactory conditions shall be reported to the General Contractor and corrected before the application of Sika products.

Sentry Stucco Plus Wall System

TYPICAL CORNER BEAD



- Attach corner bead over SikaWall Permalath 1000 or metal plaster base.
- Corner bead shall be filled solid with SikaWall Stucco Base, as required.
- Senergy Crack Suppression: Flexguard 4 or SikaWall SRT Mesh embedded in Senergy Base Coat or SikaWall Stucco Surface Leveler.
- Senergy Joint/Transition Treatment Options: SikaWall MaxFlash, SikaWall Sheathing Fabric embedded in Senershield-R/-RS/-VB or SikaWall Flash Seal NP.

SSP-19 2401

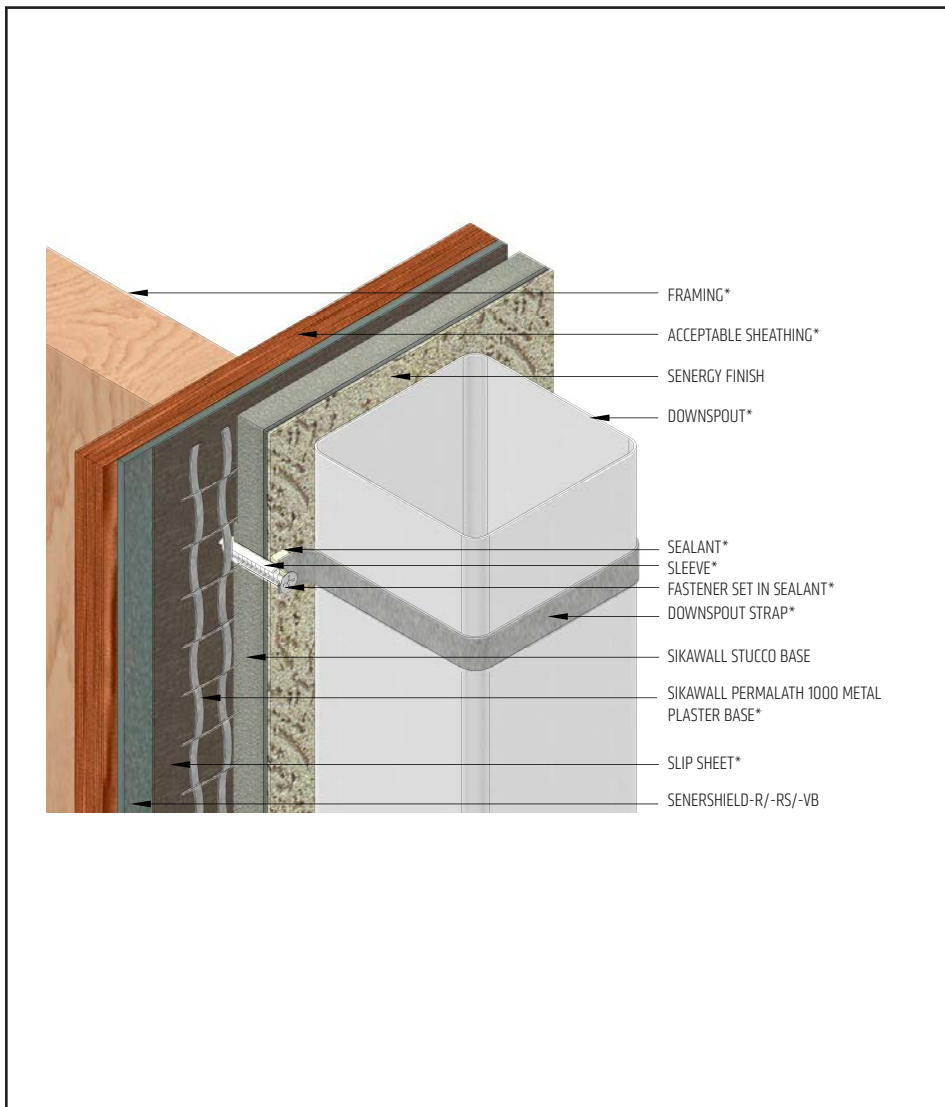
(*NOTE: BY OTHERS)

The details within are latest recommendations and are represent in good faith by Sika Corporation US (hereinafter Sika). The details are subject to change without notice. Sika accepts no liability for the end use of the details. For conditions not shown, consult Sika for review of specific details.

- Install Sika materials in accordance with current installation instructions.
- Unsatisfactory conditions shall be reported to the General Contractor and corrected before the application of Sika products.

Sentry Stucco Plus Wall System

TYPICAL DOWNSPOUT APPLICATION



- Install all materials in accordance with installation instructions and applicable code.
- Properly seal all penetrations through the Sentry Stucco Plus Wall System.

SSP-20 2401

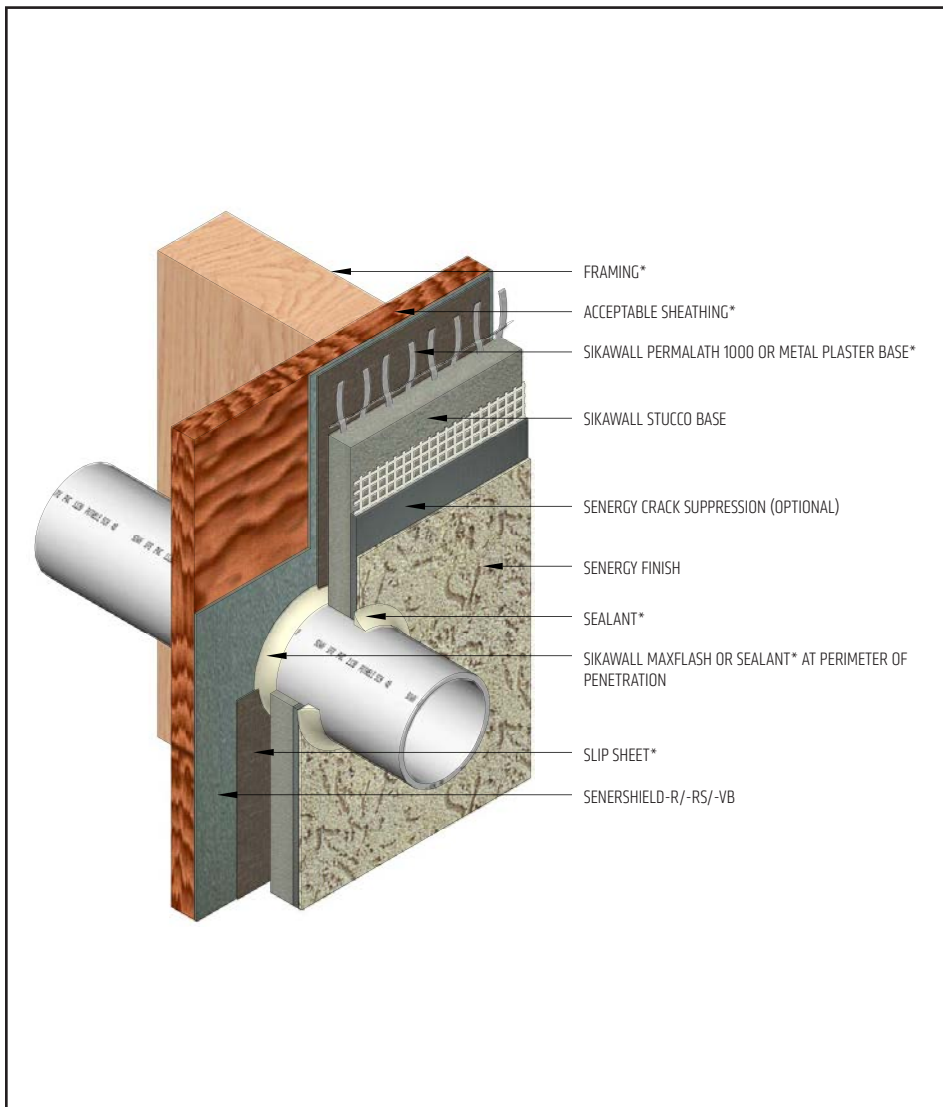
(*NOTE: BY OTHERS)

The details within are latest recommendations and are represent in good faith by Sika Corporation US (hereinafter Sika). The details are subject to change without notice. Sika accepts no liability for the end use of the details. For conditions not shown, consult Sika for review of specific details.

- Install Sika materials in accordance with current installation instructions.
- Unsatisfactory conditions shall be reported to the General Contractor and corrected before the application of Sika products.

Sentry Stucco Plus Wall System

TYPICAL PIPE PENETRATION



- Ensure all penetrations into the system are properly sealed. Reference *Acceptable Sealants to use with Senergy Wall Systems* Technical Bulletin for a list of sealants.
- Senergy Crack Suppression: Flexguard 4 or SikaWall SRT Mesh embedded in Senergy Base Coat or SikaWall Stucco Surface Leveler.
- Provide continuous air seal around perimeter of penetration prior to slip sheet application.

SSP-21 2401

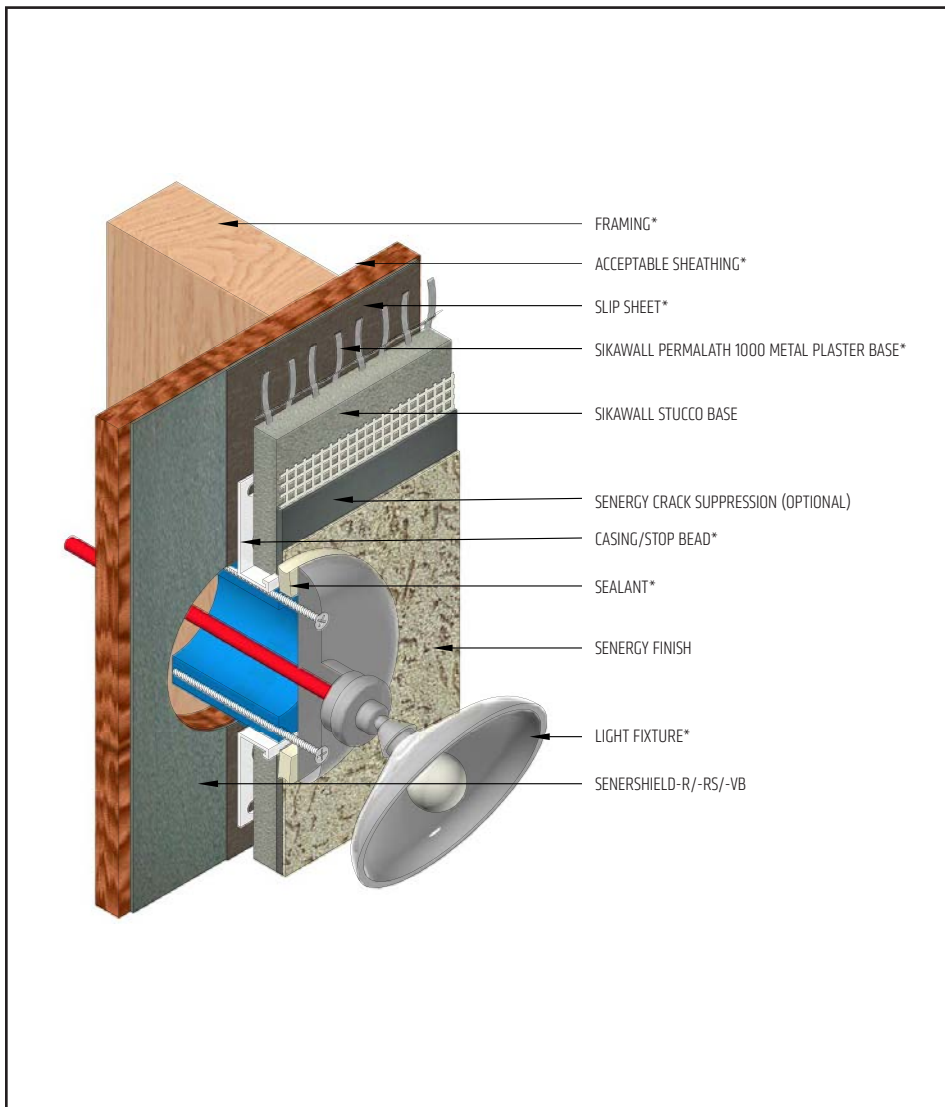
(*NOTE: BY OTHERS)

The details within are latest recommendations and are represent in good faith by Sika Corporation US (hereinafter Sika). The details are subject to change without notice. Sika accepts no liability for the end use of the details. For conditions not shown, consult Sika for review of specific details.

- Install Sika materials in accordance with current installation instructions.
- Unsatisfactory conditions shall be reported to the General Contractor and corrected before the application of Sika products.

Sentry Stucco Plus Wall System

TYPICAL LIGHT FIXTURE



- Ensure all penetrations into the system are properly sealed. Reference *Acceptable Sealants to use with Senergy Wall Systems* Technical Bulletin for a list of sealants.
- Senergy Crack Suppression: Flexguard 4 or SikaWall SRT Mesh embedded in Senergy Base Coat or SikaWall Stucco Surface Leveler.
- Provide continuous air seal around perimeter of penetration prior to slip sheet application.

SSP-22 2401

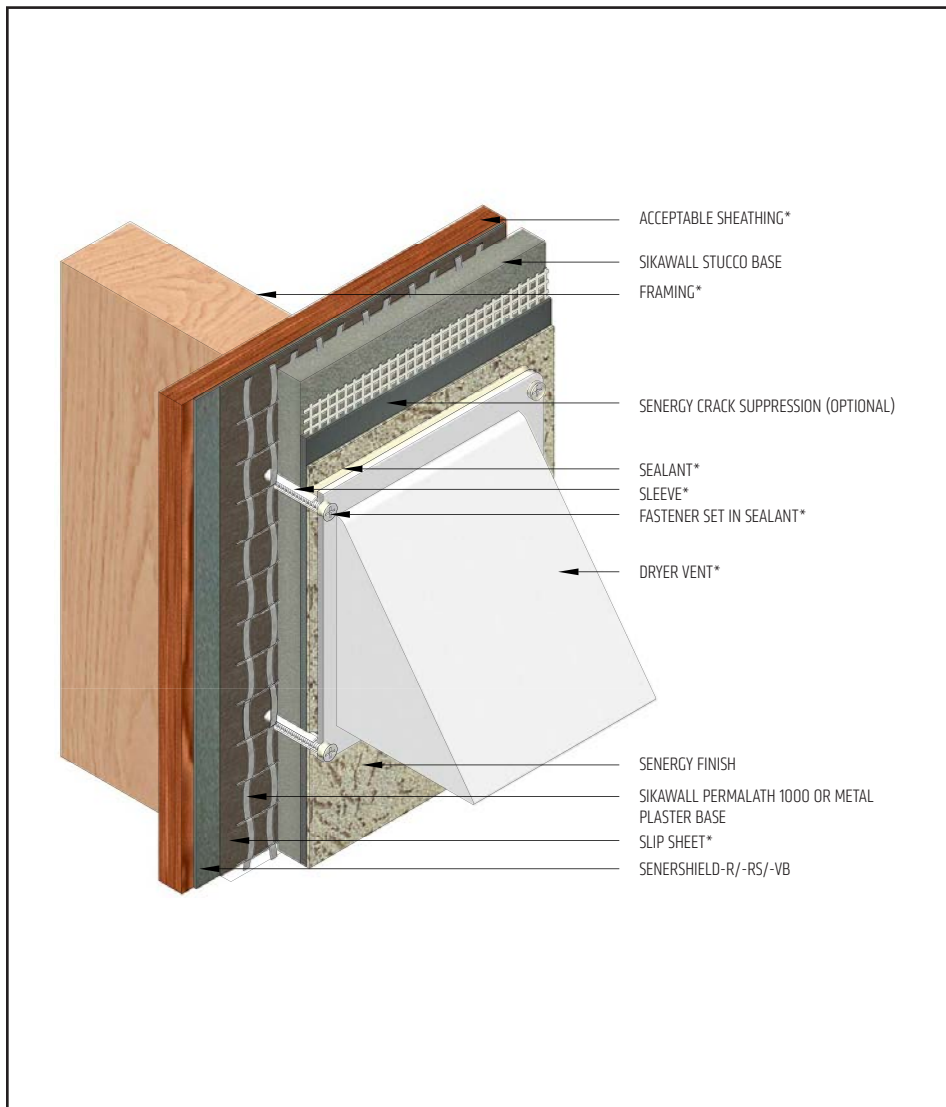
(*NOTE: BY OTHERS)

The details within are latest recommendations and are represent in good faith by Sika Corporation US (hereinafter Sika). The details are subject to change without notice. Sika accepts no liability for the end use of the details. For conditions not shown, consult Sika for review of specific details.

- Install Sika materials in accordance with current installation instructions.
- Unsatisfactory conditions shall be reported to the General Contractor and corrected before the application of Sika products.

Sentry Stucco Plus Wall System

TYPICAL DRYER VENT



- Properly seal all penetrations through the Sentry Stucco Plus Wall System.
- Senergy Crack Suppression: Flexguard 4 or SikaWall SRT Mesh embedded in Senergy Base Coat or SikaWall Stucco Surface Leveler.

SSP-23 2401

(*NOTE: BY OTHERS)

The details within are latest recommendations and are represent in good faith by Sika Corporation US (hereinafter Sika). The details are subject to change without notice. Sika accepts no liability for the end use of the details. For conditions not shown, consult Sika for review of specific details.

- Install Sika materials in accordance with current installation instructions.
- Unsatisfactory conditions shall be reported to the General Contractor and corrected before the application of Sika products.



LIMITED WARRANTY NOTICE

Prior to each use of any product of Sika Corporation, its subsidiaries or affiliates ("SIKA"), the user must always read and follow the warnings and instructions on the product's most current product label, Product Data Sheet and Safety Data Sheet which are available at usa.sika.com/senergy or by calling our Technical Service Department at +1 (800) 589-1336.

Nothing contained in any SIKA literature or materials relieves the user of the obligation to read and follow the warnings and instructions for each SIKA product as set forth in the current product label, Product Data Sheet and Safety Data Sheet prior to use of the SIKA product.

SIKA warrants this product for one year from date of installation to be free from manufacturing defects and to meet the technical properties on the current Product Data Sheet if used as directed within the product's shelf life. User determines suitability of product for intended use and assumes all risks. User's and/or buyer's sole remedy shall be limited to the purchase price or replacement of this product exclusive of any labor costs. NO OTHER WARRANTIES EXPRESS OR IMPLIED SHALL APPLY INCLUDING ANY WARRANTY OF MERCHANTABILITY OR FITNESS FOR A PARTICULAR PURPOSE. SIKA SHALL NOT BE LIABLE UNDER ANY LEGAL THEORY FOR SPECIAL OR CONSEQUENTIAL DAMAGES. SIKA SHALL NOT BE RESPONSIBLE FOR THE USE OF THIS PRODUCT IN A MANNER TO INFRINGE ON ANY PATENT OR ANY OTHER INTELLECTUAL PROPERTY RIGHTS HELD BY OTHERS. Sale of SIKA products are subject to the Terms and Conditions of Sale which are available at usa.sika.com.

For the most current version of this literature, please visit our website at usa.sika.com/senergy.

Sika Corporation

201 Polito Avenue
Lyndhurst, NJ 07071 USA
Customer Service +1 (800) 433-9517
Technical Service +1 (800) 589-1336
usa.sika.com/senergy

Rev May 2024

BUILDING TRUST

