



# COMMERCIAL JOINT SEALING SOLUTIONS

POLYURETHANE, SILICONE, HYBRID AND SPECIALTY SEALANTS

BUILDING TRUST





# INNOVATION

Sika is an innovative leader with over 100 years of experience developing and supplying products to the construction industry across a wide range of application areas. This includes Sika's sealant product line which boasts a full range of polyurethane, silicone, silyl-terminated hybrid, polyurea, and polysulfide.

These innovation efforts go beyond the products themselves and extend into all aspects of the business including production. Here they have the capability to increase quality and help deliver overall better products to the market. Sika continues to develop and invest in sealant production to find a solution for most projects.



# LEADERSHIP



Sikaflex®-1a and Sikaflex® NP1 have long set the standard for one-component polyurethane sealants in the US. Our innovative base product line has laid the groundwork for the development of many new products. Sikaflex®-2c NS EZ Mix+ is a two-component sealant that offers a true +/-50% movement capability and is easier than ever to mix and tool. Sikaflex®-2c NS Arctic is the first sealant designed to perform in temperatures as low as 15°F. Sikaflex®-444 Rapid is a groundbreaking one-component polyurethane sealant that is traffic-ready in just 4 hours. Additionally,

Sika's proprietary hybrid pre-polymers serve as the foundation for a wide range of advanced hybrid sealants, including Sikaflex® HY 150, Sikaflex® HY 100, and Sikaflex® HY 35. Sika remains committed to developing innovative product solutions that help owners, specifiers, and contractors complete projects efficiently year-round.



**Green Concrete 24h**  
**Wet Concrete 1h**

Another breakthrough innovation in many of our polyurethane products, is the ability to apply sealants to green concrete 24 hours after pouring the wet mix and damp concrete just 60 minutes after a rainfall – helping owners and contractors meet critical project deadlines!





PRODUCT APPLICATIONS

1. Brick Joints

2. Metal Panel Joints

3. Natural Stone

4. Stucco

5. Curtain Wall
6. EIFS Joints

7. Window Perimeter

8. Wet Glazing

9. Park Deck Joint

10. Pre-Cast Joints
11. Store Front Window/Door

12. Highway Joints/Roadway

13. Side Walk Joints

14. Granite Facade Joints

15. Coping
16. Roof Top Joints

17. Tarmac Joints

18.Glass Facade Joints

19. Tilt Wall Joints

20.Bridge Joints
21. Paver Joints

22. Fully Immersed Joints

23. Butt Joint Glazing

24. Cast-in-Place Concrete Joints

25. Runway Joints
26. Interior Warehouse Control Joints

27. Security Sealant for Institutions

28. Roofing, Clay Roof, Metal Flashing

PRODUCT	APPLICATION
Sikaflex®-1a/ Sikaflex® NP 1	<div><div>17101114</div><div>1516212224</div></div>
Sikaflex®-15 LM	<div><div>1346710</div><div>111215141924</div></div>
Sikaflex® 1c SL Sikaflex® SL1	<div><div>131721</div></div>
Sikaflex® TX1	<div><div>147101124</div></div>
Sikaflex®-444 Rapid	<div><div>925</div></div>
Sikaflex®-11 FC	<div><div>179</div><div>10111522</div></div>
Sikaflex®-CR195	<div><div>27</div></div>
Sikaflex®-2c Ns EZ Mix+/ Sikaflex® NP2	<div><div>13479101112</div><div>1314151619212224</div></div>
Sikaflex®-2c SL/ Sikaflex® SL2	<div><div>91213212225</div></div>
Sikaflex®-2c NS Arctic	<div><div>1379101114</div><div>151624111924</div></div>
Sikaflex®HY 35	<div><div>17101114</div><div>1516212224</div></div>
Sikaflex® HY 100	<div><div>137</div><div>10111924</div></div>
Sikaflex® HY 150	<div><div>1346</div><div>710111924</div></div>
Sikasil® WS-290/ 290 FPS	<div><div>1234567</div><div>101114182324</div></div>
Sikasil® WS-295/ Sikasil® 295 FPS	<div><div>12345678</div><div>1011141516182324</div></div>
Sikasil® WS-305	<div><div>5781123</div></div>
Sikasil® N-Plus	<div><div>17101115</div><div>16212324</div></div>
Sikasil®-728 SL	<div><div>9122025</div></div>
Sikasil®-728 NS	<div><div>9122025</div></div>
Sikasil®-728 RCS	<div><div>122025</div></div>
Sikaflex®-NP125	<div><div>28</div></div>
Sikasil®-451	<div><div>22</div></div>
Sika® Loadflex-524 EZ	<div><div>26</div></div>
Sikadur®-58 CJR	<div><div>26</div></div>
Sika® Duoflex NS	<div><div>11022</div></div>
Sika® Duoflex SL	<div><div>22</div></div>

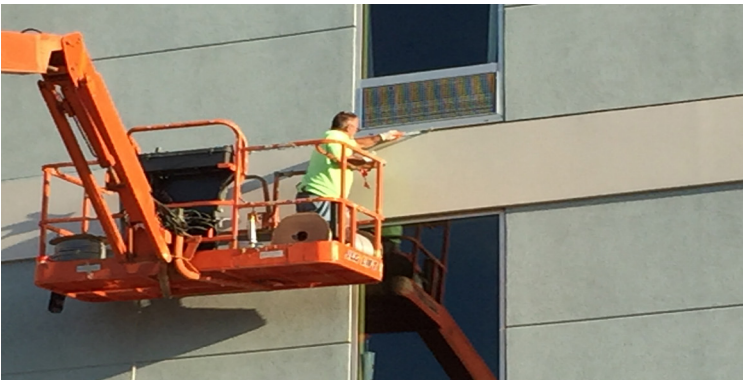


# ONE-COMPONENT POLYURETHANE

Sika's one-component polyurethane sealants are the foundation to our sealant product line. Sikaflex® 1a / Sikaflex®NP1 have been on the market for over 50 years with a strong, proven performance for a variety of applications. Sika's polyurethane sealants are the go-to products for contractors, specifiers, and owners who want a trusted product solution with outstanding performance.

## KEY PRODUCTS:

- Sikaflex®-1a/ Sikaflex® NP1**  
General purpose, Class 35 sealant for expansion joints, window perimeters, transitions, gaps, and cracks.
- Sikaflex®-15 LM**  
Low-modulus, Class 100/50 sealant for high-movement joints.
- Sikaflex®-1c SL/Sikaflex® SL1**  
Self-leveling, Class 25 sealant for horizontal pavement joints and cracks.
- Sikaflex® TX1**  
General purpose, textured, Class 25 sealant for joints, perimeters, cracks, and gaps.
- Sikaflex®-11 FC**  
General purpose, fast curing sealant / adhesive for bonding and filling cracks and gaps. Class 12.5.
- Sikaflex®-444 Rapid**  
One component, polyurethane based sealant, semi self-leveling, 4-hour traffic ready when mixed with Sikaflex- 444 Rapid Booster.



	ASTM C920	Movement Capability	Consistency	Horizontal (H) Vertical (V)	Immersion Service	Potable Water NSF/ANSI 61 NSF 600	Fire Rated	Green/Damp Concrete	High Heel Traffic	Paintable	Custom Colors	Available Packaging
Sikaflex®-1a	■	+/-35%	Non-Sag	H,V	■ <sup>1</sup>	■		■		■	■	
Sikaflex® NP1	■	+/- 35%	Non-Sag	H,V	■ <sup>1</sup>		■ (2 hrs)	■		■		
Sikaflex®-15 LM	■	+100/-50%	Non-Sag	V			■ (3 hrs)			■	■	
Sikaflex®-1c SL	■	+/-25%	Self-Leveling	H				■	■			
Sikaflex® SL1	■	+/-25%	Self-Leveling	H								
Sikaflex® TX1	■	+/-25%	Non-Sag	H,V						■		
Sikaflex®-11 FC	■	+/-12.5%	Non-Sag	H,V	■ <sup>1</sup>	■						
Sikaflex®-444 Rapid	■	+/- 35%	Semi-Self Leveling	H								

-Cartridge    -Sausage    -Pail    -Drum    1- Primer required

# TWO-COMPONENT POLYURETHANE

Sika's two-component polyurethane sealants are a staple of the parking garage and tilt-wall markets. With the ability to cure in cold temperatures and cure faster than standard one-component sealant, the Sikaflex® two-components offer a premier choice for contractors and specifiers.



## KEY PRODUCTS:

- Sikaflex®-2c NS EZ Mix+**  
Non-sag, true Class 50 sealant. Can be applied to green and wet concrete.
- Sikaflex® NP2**  
Non-sag, class 25, highly flexible, non-priming, high-performance polyurethane sealant.
- Sikaflex®-2c SL**  
Self-leveling, Class 25 with capability of 50% movement when applied with hourglass shape and 2:1 width to depth ratio.
- Sikaflex® SL2**  
Self-leveling, elastomeric polyurethane sealant. When cured, it forms a tough, resilient joint seal that resists penetration and abrasion and remains flexible.
- Sikaflex®-2c NS Arctic**  
Non-sag, Class 25, for use in freezing conditions. It can be mixed, gunned, tooled and cured at temperatures down to 15°F.

	ASTM C920	Movement Capability	Consistency	Horizontal (H) Vertical (V)	Immersion Service	Potable Water NSF/ANSI 61 NSF 600	Fire Rated	High Heel Traffic	Color Paks (available)	Available Packaging
Sikaflex®-2c NS EZ Mix+	■	+/-50%	Non-Sag	H,V	■ <sup>1</sup>	■	■ (2 hrs)	■ <sup>2</sup>	■ <sup>3</sup>	1.5 Gal 3.0 Gal
Sikaflex® NP2	■	+/- 25%	Non-Sag	H,V	■ <sup>1</sup>	■	■ (2 hrs)		■ <sup>3</sup>	1.5 Gal 3.0 Gal
Sikaflex®-2c SL	■	+/-50%	Self-Leveling	H	■ <sup>1</sup>			■	■ <sup>3</sup>	1.5 Gal 3.0 Gal
Sikaflex® SL2	■	+/- 25%	Self-Leveling	H					■ <sup>3</sup>	1.5 Gal 3.0 Gal
Sikaflex®-2c NS Arctic	■	+/-25%	Non-Sag	H,V	■ <sup>1</sup>				■ <sup>3</sup>	1.5 Gal

-Pail    1-Primer required    2 -EZ Mix+ TG Additive    3 -Custom color matching available



# BUILDING SILICONE

The Sikasil® line of products represents the highest level of silicone sealant performance. The Sikasil® technology is built around achieving primerless adhesion to concrete along with outstanding adhesion to common non-porous surfaces. Sika's non-staining, high performance line of silicone sealants are used in applications from low-rise buildings to high-rise facade joints!

## KEY PRODUCTS:

- Sikasil® WS-295**  
Low modulus, Class 50, non-staining, neutral cure silicone building sealant.
- Sikasil® WS-290**  
Ultra-low modulus, Class 100/50, non-staining, neutral cure silicone building sealant.
- Sikasil® WS-305**  
Low modulus, Class 50, optimized, neutral cure silicone building sealant.
- Sikasil®-N Plus**  
Class 25, mildew-resistant, neutral cure.
- Sikasil®-GP**  
General purpose, mildew-resistant, acetoxysilicone sealant.



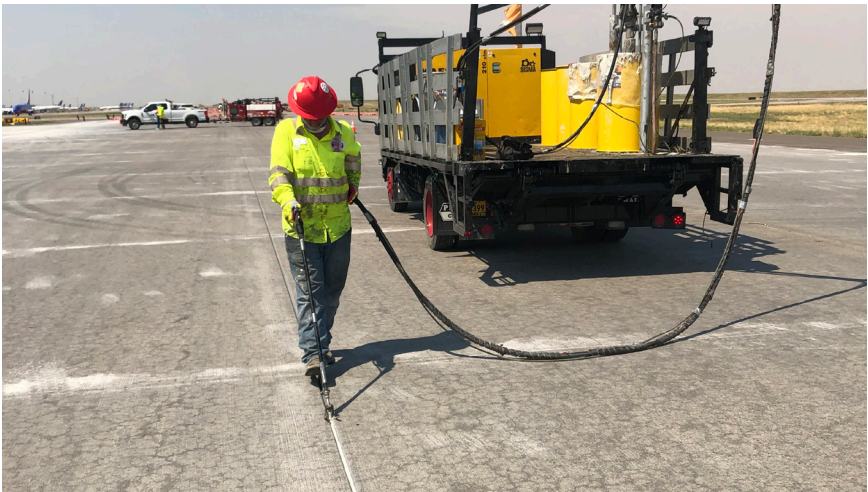
	ASTM C920	Movement Capability	Consistency	Horizontal (H) Vertical (V)	Non-Staining	Wet Glazing	Universal Color Paks (51 Colors)	Batch Produced Custom Colors	Available Packaging
Sikasil® WS-295	■	+/-50%	Non-Sag	V	■	■		■	
Sikasil® WS-295 FPS	■	+/-50%	Non-Sag	V	■	■	■		
Sikasil® WS-290	■	+100/-50%	Non-Sag	V	■			■	
Sikasil® WS-290 FPS	■	+100/-50%	Non-Sag	V	■		■		
Sikasil® WS-305	■	+/-50%	Non-Sag	V		■			
Sikasil®-N Plus	■	+/-25%	Non-Sag	V					
Sikasil®-GP			Non-Sag	V					

-Cartridge   -Sausage   -Pail   -Drum   1- Custom color available

COMMERCIAL JOINT SEALING SOLUTIONS  
Polyurethane, Silicone, Hybrid and Specialty Sealants

# HIGHWAY & BRIDGE SILICONE

Sika also offers a range of silicone sealants for DOT applications which allow for performance in a variety of project types. Bridge joints that require fast turn around generally use Sikasil®-728 RCS, a rapid curing two-component silicone. While standard highway pavement applications typically require the self-leveling Sikasil®-728 SL for easy application and high production for miles of highway!



## KEY PRODUCTS:

- Sikasil®-728 SL**  
Self-leveling, Class 100/50, neutral cure silicone sealant.
- Sikasil®-728 NS**  
Non-sag, Class 100/50, neutral cure silicone sealant.
- Sikasil®-728 RCS**  
Self-leveling, Class 100/50, rapid curing sealant.



	ASTM C920	ASTM D5893	Movement Capability	Consistency	Horizontal (H) Vertical (V)	Rapid Cure	Colors	Available Packaging
Sikasil®-728 SL	■	■	+100/-50%	Self-Leveling	H		Limestone Charcoal	
Sikasil®-728 NS	■	■	+100/-50%	Non-Sag	V,H		Limestone Charcoal	
Sikasil®-728 RCS	■	■	+100/-50%	Self-Leveling	H	■	Limestone	

-Cartridge   -Sausage   -Pail   -Drum

COMMERCIAL JOINT SEALING SOLUTIONS  
Polyurethane, Silicone, Hybrid and Specialty Sealants



# HYBRID

Sika's proprietary silyl-terminated hybrid sealants are unmatched in performance and quality. By creating our own pre-polymers, Sika has the advantage in performance capabilities that cannot be obtained by using off the shelf chemistry!

## KEY PRODUCTS:

- Sikaflex® HY 150**  
High performance, Class 100/50, ultra low-modulus, non-sag, and fast-curing hybrid sealant. High movement, ideal for stucco and EIFS.
- Sikaflex® HY 100**  
High performance, Class 50, low-modulus, non-sag hybrid sealant. The workhorse of Sika's Silyl-Terminated sealant line with proven long-term performance when a lower modulus sealant is needed.
- Sikaflex® HY 35**  
Fast skinning and very durable, Class 35, medium-modulus, non-sag hybrid sealant. Excellent for window perimeters and when a firmer sealant is desirable.
- SikaHyflex®-407 EverFlash Universal**  
Non-sag, Class 12.5, silyl-terminated hybrid sealant with special adhesion to low-surface tension materials and compatibility with most peel and stick flashing.



	ASTM C920	Movement Capability	Consistency	Horizontal (H) Vertical (V)	Paintable (wet-on-wet)	TintBase (available)	EIFS suitable (ASTM C1382)	Available Packaging
Sikaflex® HY 150	■	+100%/-50%	Non-Sag	V	■	■ <sup>2</sup>	■	
Sikaflex® HY 100	■	+/-50%	Non-Sag	V	■	■ <sup>2</sup>	■	
Sikaflex® HY 35	■	+/-35%	Non-Sag	V	■			
SikaHyflex®-407 EverFlash Universal	■	+/-12.5%	Non-Sag	V				

 -Cartridge     -Sausage     -Pail    1- Primer required    2- Custom Color Pack (available)







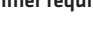
# SPECIALTY

Sika's wide selection of specialty sealants include application areas such as control joints in vast warehouses or distribution center flooring which require the use of a polyurea fast cure control joint resin or epoxy control joint resin. Chemical facilities also need joint sealants for secondary containment areas which use polysulfide sealants for chemical resistance. Educational and penitentiary facilities are some other examples of environments that need specialty joint fillers that are hard enough to be pick proof. These specialty group of sealants are available to support a variety of application areas to meet most any project need!



## KEY PRODUCTS:

- Sika® Loadflex-524 EZ**  
Rapid curing, self-leveling, polyurea control joint resin. Can be shaved in under 5 minutes.
- Sikadur®-58 CJR**  
Self-leveling, epoxy control joint resin.
- Sika® Duoflex NS**  
Non-sag, chemical resistant polysulfide sealant.
- Sika® Duoflex SL**  
Self-leveling, chemical resistant polysulfide sealant.
- Sikadur®-31 Hi-Mod Gel**  
Non-sag, epoxy pick-proof joint resin.
- Sikaflex® NP125**  
Class 12.5, Roofing adhesive, single-component, synthetic rubber based adhesive with fast tack-free time with tenacious bond to common roofing materials (including roof tiles, metal flashing, shingles, etc).
- Sikaflex® CR195**  
Class 25 polyurethane, pick resistant excellent for security applications that require elasticity, abrasion and puncture resistance.

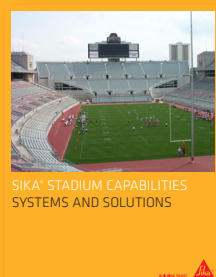
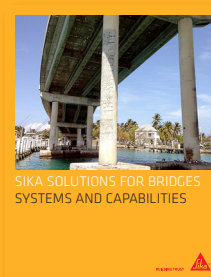
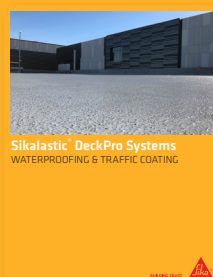
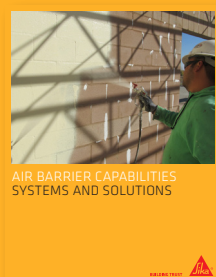
	ASTM C920	Movement Capability	Consistency	Horizontal (H) Vertical (V)	Chemical Resistant	Immersion Service	Control Joint	Pick Proof	Roof Applications	Available Packaging
Sika® Loadflex-524 EZ		-	Self-Leveling	H			■			
Sikadur®-58 CJR		-	Self-Leveling	H			■			
Sika® Duoflex NS	■	+/-25%	Non-Sag	V,H	■	■ <sup>1</sup>				
Sika® Duoflex SL	■	+/-25%	Self-Leveling	H	■	■ <sup>1</sup>				
Sikadur®-31 Hi-Mod Gel		-	Non-Sag	V				■		
Sikaflex® NP125	■	+/-12.5%	Non-Sag	H,V					■	
Sikaflex® CR195	■	+/-25%	Non-Sag	H,V				■		

 - Cartridge     -Sausage     - Pail    1- Primer required

## WE ARE SIKA

Sika is a specialty chemicals company with a leading position in the development and production of systems and products for bonding, sealing, damping, reinforcing and protecting in the building sector and the motor vehicle industry. Sika's product lines feature concrete admixtures, mortars, sealants and adhesives, structural strengthening systems, industrial flooring as well as roofing and waterproofing systems.

## RELATED BROCHURES



Our most current General Sales Conditions shall apply. Please consult the Product Data Sheets prior to any use and processing.

©Sika Corporation / 06.2301.5 /09/2024

SIKA CORPORATION  
201 Polito Avenue  
Lyndhurst, NJ 07071  
USA

CONTACT  
Phone 201-933-8800  
Fax 201-933-6225  
[usa.sika.com](http://usa.sika.com)

BUILDING TRUST

