

# PRODUCT DATA SHEET

## Sika® PostFix

EASY-TO-PREPARE, MIX-IN-THE-BAG, FAST-SETTING, EXPANDING POLYURETHANE FOAM FOR POST INSTALLATION

### PRODUCT DESCRIPTION

Sika® PostFix is a two-part, pre-proportioned polyurethane resin which when mixed produces an expanding foam. It has been specifically formulated and packaged to provide a lightweight, mix-in-the-bag, and fast-setting backfill for wooden, PVC and steel in-ground supports. Sika® PostFix is based upon Sika's proven foam technology and designed for easy, convenient and quick support of many types of posts.

### USES

- Fence gate posts
- Mail box posts
- Signage posts
- Lamp posts

### CHARACTERISTICS / ADVANTAGES

- Light weight and easy to handle
- Simple application - just roll, mix and pour
- Pre-portioned for quality control and consistent performance
- Sets in 3 minutes (varies with temperature), allowing faster placement
- Seals and protects base of post
- Compatible with use in cold conditions without the need for additives
- Ideal for wooden, PVC, steel, aluminum

### PRODUCT INFORMATION

<b>Packaging</b>	33 fl. oz. (976 ml) pouch, 10/case
<b>Color</b>	Light Green
<b>Shelf Life</b>	1 year in original, unopened packaging
<b>Storage Conditions</b>	Store at 41 to 89 °F (5 to 32 °C). It is very important to condition material to 65 to 77 °F (18 to 25 °C) for at least 2 hours before using as high heat can cause bag to burst and cold temperatures can cause shrinkage. Protect from freezing and high heat and do not use damaged or opened bags. If frozen or damaged, discard
<b>Service Temperature</b>	-22 to 130 °F (-30 to 54 °C)

## APPLICATION INFORMATION

Coverage	Hole Diam.* (in)	Hole Depth* (in)	# of Pouches
<b>Round Post</b>			
2 in.	6	46	1
<b>Square Post</b>			
4 in. x 4 in.	8	36	1
	10	36	2
6 in. x 6 in.	10	48	2

\*Always refer to local frost depths and building codes for guidance.

<b>Coverage</b>	Approx. 0.7 ft <sup>3</sup> (20 L) of expanded foam per pouch
<b>Cure Time</b>	Initial Set: 3–5 minutes Final Set: 2 hours

## APPLICATION INSTRUCTIONS

### SUBSTRATE PREPARATION

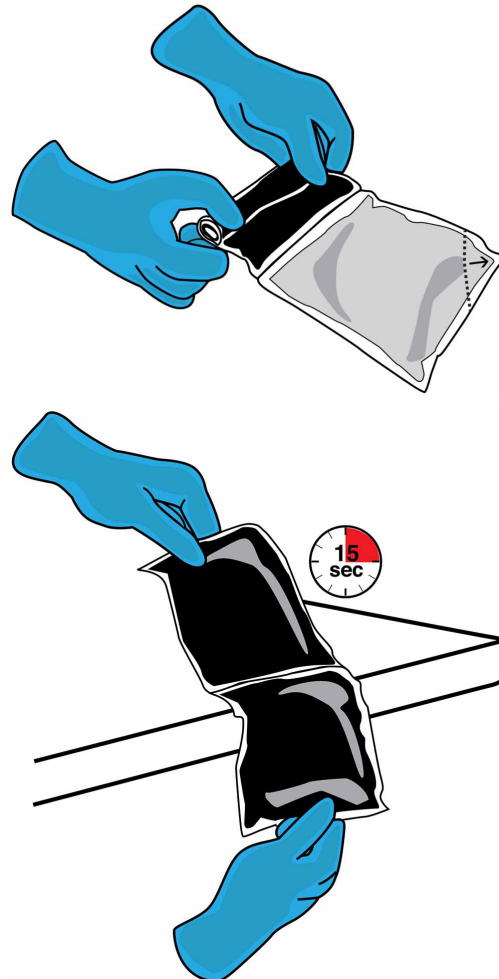
**FOR OUTDOOR USE ONLY.** Using a post hole digger or auger, dig the hole to the proper depth (depends on post size, soil conditions and frost depths) and diameter (refer to the Examples in the Technical Data section). Make sure that the post is adequately positioned in the hole. The post should stand straight and level and be either braced or held before mixing the material. If there is standing water in the hole, backfill partially with soil or gravel until water is no longer visible or pump the water out. **Keep material between 65 and 77 °F (18–25 °C) for at least 2 hours before mixing and use.** Sika® PostFix will react faster in warmer temperatures.

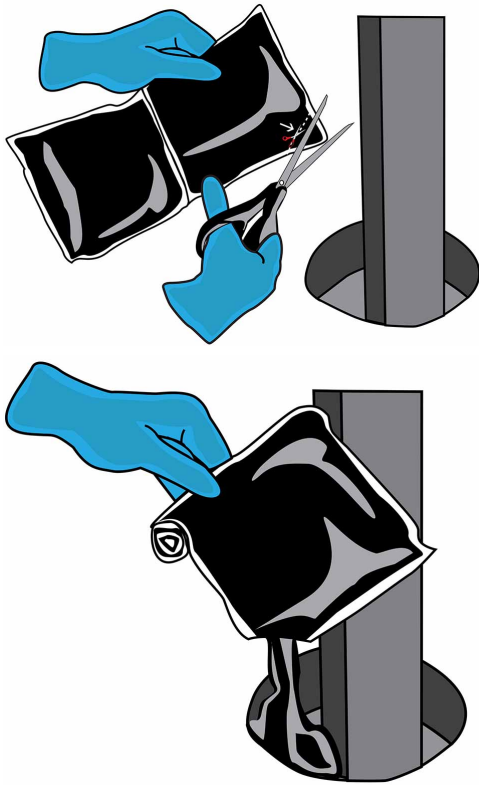
### MIXING

**Before mixing:** Wear safety goggles. Wear chemically resistant gloves. Have product pouch and scissors directly next to the hole and be ready to cut the corner of the pouch where indicated after 15 seconds mixing time is completed. Always keep the cut line pointed away from your body.

**NOTE:** Do not mix the product away from the application area. All mixing must be done outdoors immediately adjacent to hole. Roll the pouch, starting at the compartment containing Component A, working towards the 'burst seal' in the direction of the arrows shown on the back label. Apply pressure to the rolled section to rupture the seal and allow Component A to flow into the compartment containing Component B. Keep away from face at all times. Mix thoroughly by then rolling out the pouch and rubbing the bag along a table edge or any 90 degree surface (no sharp edges). Mix for 15 seconds only by forcing the material to travel inside the bag, from one end to the other (using a "shoe shining" technique).

**CAUTION! DO NOT EXCEED THE 15 SECONDS MIXING TIME AS THE MATERIAL IN THE POUCH WILL EXPAND CAUSING THE POUCH TO BURST AND SPRAY CONTENTS, RESULTING IN POSSIBLE BODILY INJURY OR PROPERTY DAMAGE.**





#### APPLICATION METHOD / TOOLS

You **MUST** be right next to the post hole. Mix the product vigorously for 15 seconds. Immediately after mixing, cut the bag open with scissors at the corner as shown to prevent bag from bursting. Pour mixed material into the hole before expansion starts. Do not allow the material to start expanding inside of the bag. Empty the bag into the hole, pouring some of the material on to the post itself. Covering the section of post due to be below grade will help to provide improved support, a good seal and protection to the base of the post. If necessary, the position of the post may be adjusted for up to 10 seconds after the material has been poured. Do not move the post after this time and support it until the material has firmed up. Expansion will be achieved in approximately 3 to 5 minutes, after which time there will be no need to brace or support the post (unless cold or windy conditions prevail, in which case hold the post until it stands firm). Allow approximately 2 hours for the product to set completely before installing the fence or attaching gates, etc. to the post.

Gate post require 2 Sika® PostFix pouches

#### CLEANING OF TOOLS

Remove excess material immediately before cure using either a solvent-based cleaner or clean cloth to remove splatters of uncured material. Strictly follow the solvent manufacturer's warnings and instructions for use. Dispose of in accordance with local regulations.

Hardened/cured material can only be removed mechanically with a hand tool.

#### LIMITATIONS

- Holes must be formed to appropriate dimensions to support the post and must be free of standing water.
- Material must be pre-conditioned to between 65 to 77 °F (18 to 25 °C) for at least 2 hours before mixing and use.
- **Exposure to high heat (in excess of 89 °F (32 °C) accelerates expanding reaction and may cause bag to burst.**
- If the bag is above the recommended temperature before mixing, the product will expand too quickly.
- Do not exceed the mixing time of 15 seconds as the material will expand within the pouch and the bag will rupture, spraying contents that can result in possible bodily injury and/or property damage.
- Do not mix on a sharp edge or a vehicle (example: vehicle tailgate)
- Never allow the material to start to expand inside of the bag
- Do not move the post after the 10 seconds following the initial pour.
- Material not intended for setting deck posts.
- Do not use for structural posts or posts exposed to a lot of sideways load
- Do not allow the product to freeze. Freezing will cause the product to yield less material.
- Discard in accordance with local environmental regulations.

#### BASIS OF PRODUCT DATA

Results may differ based upon statistical variations depending upon mixing methods and equipment, temperature, application methods, test methods, actual site conditions and curing conditions.

#### OTHER RESTRICTIONS

See Legal Disclaimer.

#### ENVIRONMENTAL, HEALTH AND SAFETY

For further information and advice regarding transportation, handling, storage and disposal of chemical products, user should refer to the actual Safety Data Sheets containing physical, environmental, toxicological and other safety related data. User must read the current actual Safety Data Sheets before using any products. In case of an emergency, call CHEMTREC at 1-800-424-9300, International 703-527-3887.

#### LEGAL DISCLAIMER

- **KEEP CONTAINER TIGHTLY CLOSED**
- **KEEP OUT OF REACH OF CHILDREN**

- NOT FOR INTERNAL CONSUMPTION
- FOR INDUSTRIAL USE ONLY
- FOR PROFESSIONAL USE ONLY

Prior to each use of any product of Sika Corporation, its subsidiaries or affiliates ("SIKA"), the user must always read and follow the warnings and instructions on the product's most current product label, Product Data Sheet and Safety Data Sheet which are available at [usa.sika.com](http://usa.sika.com) or by calling SIKA's Technical Service Department at 1-800-933-7452. Nothing contained in any SIKA literature or materials relieves the user of the obligation to read and follow the warnings and instructions for each SIKA product as set forth in the current product label, Product Data Sheet and Safety Data Sheet prior to use of the SIKA product.

SIKA warrants this product for one year from date of installation to be free from manufacturing defects and to meet the technical properties on the current Product Data Sheet if used as directed within the product's shelf life. User determines suitability of product for intended use and assumes all risks. User's and/or buyer's sole remedy shall be limited to the purchase price or replacement of this product exclusive of any labor costs.

**NO OTHER WARRANTIES EXPRESS OR IMPLIED SHALL APPLY INCLUDING ANY WARRANTY OF MERCHANTABILITY OR FITNESS FOR A PARTICULAR PURPOSE. SIKA SHALL NOT BE LIABLE UNDER ANY LEGAL THEORY FOR SPECIAL OR CONSEQUENTIAL DAMAGES. SIKA SHALL NOT BE RESPONSIBLE FOR THE USE OF THIS PRODUCT IN A MANNER TO INFRINGE ON ANY PATENT OR ANY OTHER INTELLECTUAL PROPERTY RIGHTS HELD BY OTHERS.**

Sale of SIKA products are subject to the Terms and Conditions of Sale which are available at <https://usa.sika.com/en/group/SikaCorp/termsandconditions.html> or by calling 1-800-933-7452.

**Sika Corporation**  
201 Polito Avenue  
Lyndhurst, NJ 07071  
Phone: +1-800-933-7452  
Fax: +1-201-933-6225  
[usa.sika.com](http://usa.sika.com)

**Sika Mexicana S.A. de C.V.**  
Carretera Libre Celaya Km. 8.5  
Fracc. Industrial Balvanera  
Corregidora, Queretaro  
C.P. 76920  
Phone: 52 442 2385800  
Fax: 52 442 2250537



Product Data Sheet  
Sika® PostFix  
September 2018, Version 01.03  
020514070000000003

SikaPostFix-en-US-(09-2018)-1-3.pdf

**BUILDING TRUST**

