

SYSTEM DATA SHEET

Sikafloor® DecoDur ES-26 Flake

Decorative, smooth, low voc, coloured full flaked epoxy floor covering

PRODUCT DESCRIPTION

Sikafloor® DecoDur ES-26 Flake is a decorative, coloured, smooth low VOC, full flaked floor covering designed for indoor applications.

USES

Sikafloor® DecoDur ES-26 Flake may only be used by experienced professionals.

- Particularly used in the life science, pharmaceutical industries and health care industry
- Education (e.g. Schools and Universities)
- Leisure & Culture (e.g. Museums, Stadiums)
- Retail (e.g. Shopping Malls)

CHARACTERISTICS / ADVANTAGES

- Decorative
- Low VOC-content
- Good mechanical and abrasion resistance
- Easy application

APPROVALS / STANDARDS

- Particle emission certificate Sikafloor® DecoDur ES-26 Flake CSM Statement of Qualification Report GMP A-No. SI 1008-533 (system tested with Sikafloor®-169 as a top coat)
- Biological resistance certificate Sikafloor® DecoDur ES-26 Flake CSM Statement of Qualification – ISO 846, very good - Report No. SI 1008-533. (system tested with Sikafloor®-169 as a top coat)
- Fire classification of Sikafloor® DecoDur ES-26 Flake in accordance with EN 13501-1, classification report-No. 2011-1379-K1, Exova Brandhaus, Germany, April 2011 (system tested with Sikafloor®-316 as a top coat)

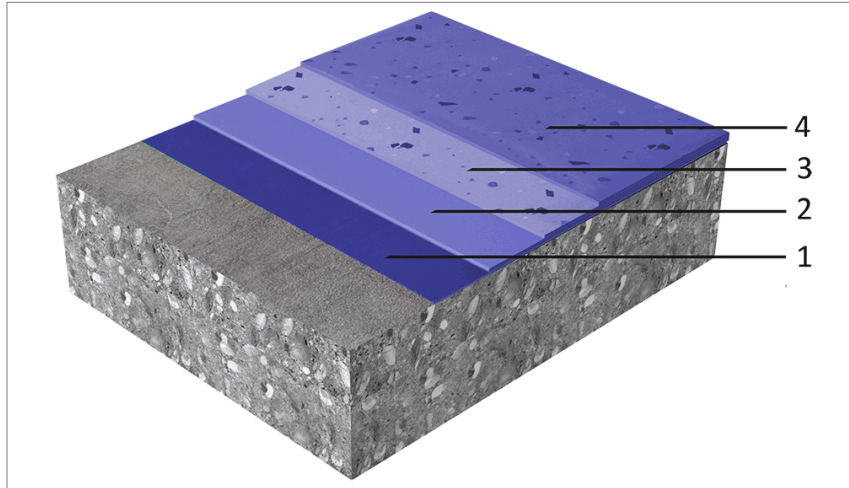
PRODUCT INFORMATION

Packaging	Please refer to the individual Product Data Sheets
Shelf Life	Please refer to the individual Product Data Sheets
Storage Conditions	Please refer to the individual Product Data Sheets

SYSTEM INFORMATION

System Structure

Sikafloor® DecoDur ES-26 Flake system



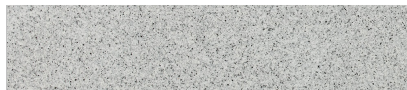
Layer	Product
1. Primer	Sikafloor®-156, -160, -161 or -169
2. Wearing coat	Sikafloor®-263 SL or -264 pigmented approx. the same like the following Sika PVA ColorFlakes (filled 1:1 with quartz sand 0.1–0.3 mm)
3. Broadcast & Seal coat	broadcast in excess with Sika®-PVA ColorFlakes 3 mm First seal coat with Sikafloor®-169. Soft grinding the next day and a second seal coat with Sikafloor®-169
4. Top coat	Sikafloor®-316 with high scratch resistance

Composition Epoxy

Appearance Glossy orange peel finish possible

Colour

Iceberg:



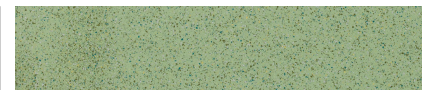
Hiero:



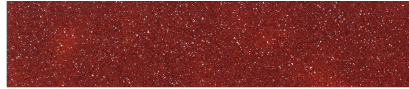
Noblesse:



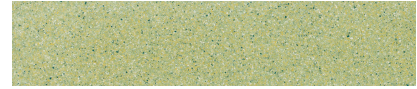
Amand:



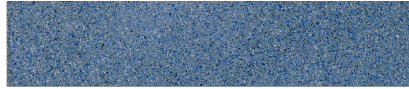
Framboise:



Fleur de Tilleul:



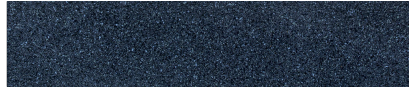
Blue Jean:



Nougat:



Mer du Nord:



Bordeaux:



Granit:



Pêche:



Dune:



Sanguine:



Sable:



Nominal Thickness	~2–3mm
-------------------	--------

TECHNICAL INFORMATION

Reaction to Fire	Bfl-S1	(DIN EN 13501-1)
Chemical Resistance	Resistant to many chemicals. Contact Sika technical service for specific information.	
Skid / Slip Resistance	R9	(DIN 51130)

APPLICATION INFORMATION

Coverage		
Coating System	Product	Consumption
Primer	1–2 × Sikafloor®-156, -160, -161 or -169	1–2 × ~0.3–0.5 kg/m ²
Wearing coat	Sikafloor®-263 SL or -264 pigmented approx. the same like the following flake mix , filled 1:1 with quartz sand 0.1–0.3 mm	~1.9 kg/m ² per mm
Broadcast	Broadcast in excess with Sika®-PVA ColorFlakes 3 mm	~1.0 kg/m ²
First seal coat	1 × Sikafloor®-169	~0.6–0.7 kg/m ²
Second seal coat	1 × Sikafloor®-169 after sanding of the sealed surface	~0.3 kg/m ²
Top coat (Optional)	1 × Sikafloor®-316 after sanding of the sealed surface	~0.1–0.12 kg/m ²

* Before applying Sikafloor®-316 please refer to the individual product data sheet.

Product Temperature Please refer to the individual Product Data Sheets

Ambient Air Temperature +10 °C min. / +30 °C max.

Relative Air Humidity 80 % r.h. max.

Dew Point Beware of condensation!
The substrate and uncured floor must be at least 3°C above dew point to reduce the risk of condensation or blooming on the floor finish.

Substrate Temperature When performing application work with Sikafloor® Decodur ES-26 Flake, the substrate moisture content must not exceed 4 % pbw measured by Tramex. Test method: Sika®-Tramex meter, CM - measurement or Oven-dry-method. No rising moisture according to ASTM (Polyethylene-sheet).

Substrate Moisture Content When performing application work with Sikafloor® DecoDur ES-26 Flake, the substrate moisture content must not exceed 4 % pbw measured by Tramex. Test method: Sika®-Tramex meter, CM - measurement or Oven-dry-method. No rising moisture according to ASTM (Polyethylene-sheet).

Waiting / Recoat Times Before applying Sikafloor®-169 on Sikafloor®-156/ -161/ -160/ -264/-169 allow:

Substrate temperature	Minimum	Maximum
+10 °C	36 hours	4 days
+20 °C	12 hours	2 days
+30 °C	8 hours	1 day

Before applying Sikafloor®-316 on Sikafloor®-169 allow:
Before applying Sikafloor®-316 on Sikafloor® epoxies, the surface has to be treated with a green Scotch-Brite™ pad to remove contaminations or be cleaned professionally with Kärcher RM 776 or Veroclean.

Substrate temperature	Minimum	Maximum
+10 °C	30 hours	C4 days
+20 °C	24 hours	3 days
+30 °C	6 hours	2 days

Times are approximate and will be affected by changing ambient conditions particularly temperature and relative humidity.

Applied Product Ready for Use

Sikafloor®-169

Temperature	Foot traffic	Light traffic	Full cure
+10 °C	~48 hours	~6 days	~10 days
+20 °C	~30 hours	~4 days	~7 days
+30 °C	~20 hours	~3 days	~5 days

Sikafloor®-316

Temperature	Foot traffic	Light traffic	Full cure
+10 °C	~20 hours	~48 hours	~10 days
+20 °C	~16 hours	~36 hours	~7 days
+30 °C	~12 hours	~24 hours	~5 days

MAINTENANCE

CLEANING

Please refer to the Method Statement Sikafloor®-Cleaning Regime

ambient temperatures combined with high point loading, may lead to imprints in the resin.

- If heating is required do not use gas, oil, paraffin or other fossil fuel heaters, these produce large quantities of both CO₂ and H₂O water vapour, which may adversely affect the finish. For heating use only electric powered warm air blower systems.

AVAILABILITY/WARRANTY

Please refer to :

- Sika® Method Statement Mixing & Applications of Flooring systems
- Sika® Method Statement Evaluation and Preparation of Surfaces for Flooring systems
- Sika® Method Statement Sikafloor® DecoDur ES-26 Flake

BASIS OF PRODUCT DATA

Results may differ based upon statistical variations depending upon mixing methods and equipment, temperature, application methods, test methods, actual site conditions and curing conditions.

LIMITATIONS

- Do not apply Sikafloor® DecoDur ES-26 Flake on substrates with rising moisture.
- Freshly applied Sikafloor® DecoDur ES-26 Flake must be protected from damp, condensation and water for at least 24 hours.
- The incorrect assessment and treatment of cracks may lead to a reduced service life and reflective cracking.
- For exact colour matching, ensure that all the products in each area are applied from the same control batch numbers.
- Under certain conditions, underfloor heating or high

OTHER RESTRICTIONS

See Legal Disclaimer.

ENVIRONMENTAL, HEALTH AND SAFETY

For further information and advice regarding transportation, handling, storage and disposal of chemical products, user should refer to the actual Safety Data Sheets containing physical, environmental, toxicological and other safety related data. User must read the current actual Safety Data Sheets before using any products. In case of an emergency, call CHEMTREC at 1-800-424-9300, International 703-527-3887.

LEGAL DISCLAIMER

- KEEP CONTAINER TIGHTLY CLOSED
- KEEP OUT OF REACH OF CHILDREN
- NOT FOR INTERNAL CONSUMPTION
- FOR INDUSTRIAL USE ONLY
- FOR PROFESSIONAL USE ONLY

Prior to each use of any product of Sika Corporation, its subsidiaries or affiliates ("SIKA"), the user must always read and follow the warnings and instructions on the product's most current product label, Product Data Sheet and Safety Data Sheet which are available at usa.sika.com or by calling SIKA's Technical Service Department at 1-800-933-7452. Nothing contained in any SIKA literature or materials relieves the user of the obligation to read and follow the warnings and instructions for each SIKA product as set forth in the current product label, Product Data Sheet and Safety Data Sheet prior to use of the SIKA product.

SIKA warrants this product for one year from date of installation to be free from manufacturing defects and to meet the technical properties on the current Product Data Sheet if used as directed within the product's shelf life. User determines suitability of product for intended use and assumes all risks. User's and/or buyer's sole remedy shall be limited to the purchase price or replacement of this product exclusive of any labor costs. **NO OTHER WARRANTIES EXPRESS OR IMPLIED SHALL APPLY INCLUDING ANY WARRANTY OF MERCHANTABILITY OR FITNESS FOR A PARTICULAR PURPOSE. SIKA SHALL NOT BE LIABLE UNDER ANY LEGAL THEORY FOR SPECIAL OR CONSEQUENTIAL DAMAGES. SIKA SHALL NOT BE RESPONSIBLE FOR THE USE OF THIS PRODUCT IN A MANNER TO INFRINGE ON ANY PATENT OR ANY OTHER INTELLECTUAL PROPERTY RIGHTS HELD BY OTHERS.**

Sika Corporation

201 Polito Avenue
Lyndhurst, NJ 07071
Phone: +1-800-933-7452
Fax: +1-201-933-6225
usa.sika.com

Sika Mexicana S.A. de C.V.

Carretera Libre Celaya Km. 8.5
Fracc. Industrial Balvanera
Corregidora, Queretaro
C.P. 76920
Phone: 52 442 2385800
Fax: 52 442 2250537



System Data Sheet

Sikafloor® DecoDur ES-26 Flake
July 2019, Version 04.01
020811900000000012

Sale of SIKA products are subject to the Terms and Conditions of Sale which are available at <https://usa.sika.com/en/group/SikaCorp/termsandconditions.html> or by calling 1-800-933-7452.

SikafloorDecoDurES-26Flake-en-US-(07-2019)-4-1.pdf

