

PAREX®

INNOVATION OFFICE PARK

130 | PROGRESS

LEASING
SHOW

Armourwall Stucco WaterMaster DM

Premium Impact and Puncture Resistant, Rain Screen Design
Cement Plaster Stucco System with Enhanced Water Management
Typical 2D Details

BUILDING TRUST



Armourwall Stucco WaterMaster DM

Typical 2D Details

Table of Contents

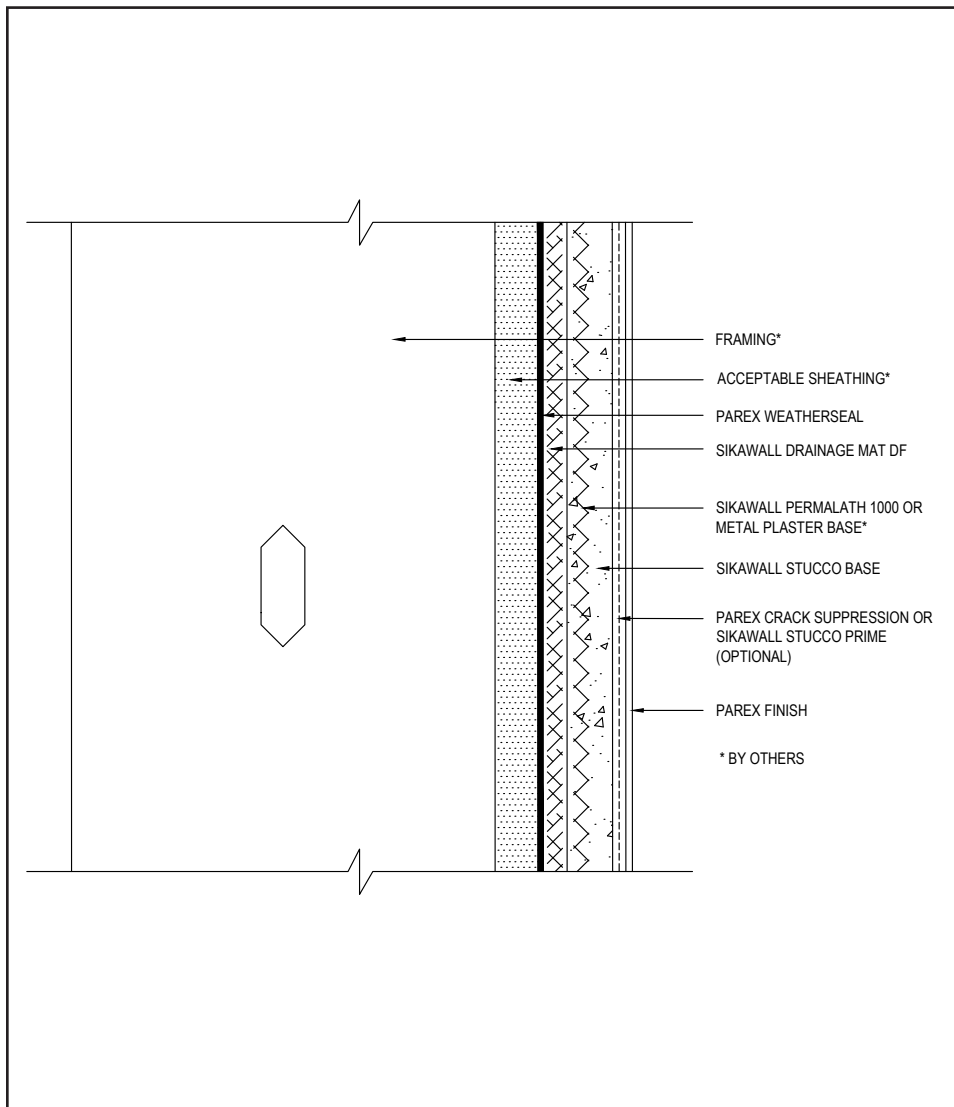
- | | |
|---|---------------------------|
| 1. Typical Application over Steel Framing | 19. Corner Bead |
| 2. Typical Application over Wood Framing | 20. Downspout Application |
| 3. Typical Application over CMU or Concrete | 21. Pipe Penetration |
| 4. Surface Control Joint | 22. Light Fixture |
| 5. Expansion Joint | 23. Dryer Vent |
| 6. Drainage at Floor Line | |
| 7. Flanged Window Jamb | |
| 8. Flanged Window Head | |
| 9. Flanged Window Sill | |
| 10. Window Head | |
| 11. Window Jamb | |
| 12. Window Sill | |
| 13. EPS Shape Application | |
| 14. Termination at Soffit or Gable | |
| 15. Termination at Foundation | |
| 16. Kick-Out Flashing at Sloped Roof | |
| 17. Termination at Deck | |
| 18. Metal Coping | |

Notes:

- **The details within are the latest recommendations and are represent in good faith by Sika Corporation US (hereinafter Sika). The details are subject to change without notice. Sika accepts no liability for the end use of the details. For conditions not shown, consult Sika for review of specific details.**
- **Install Sika materials in accordance with current installation instructions.**
- **Unsatisfactory conditions shall be reported to the General Contractor and corrected before the application of Sika products.**

Armourwall Stucco WaterMaster DM

TYPICAL APPLICATION OVER STEEL FRAMING



- Ensure Parex WeatherSeal Spray and Roll On / Trowel on WG is dry prior to SikaWall Drainage Mat DF installation.
- Install SikaWall Drainage Mat DF with the fabric side facing out.

01 0625

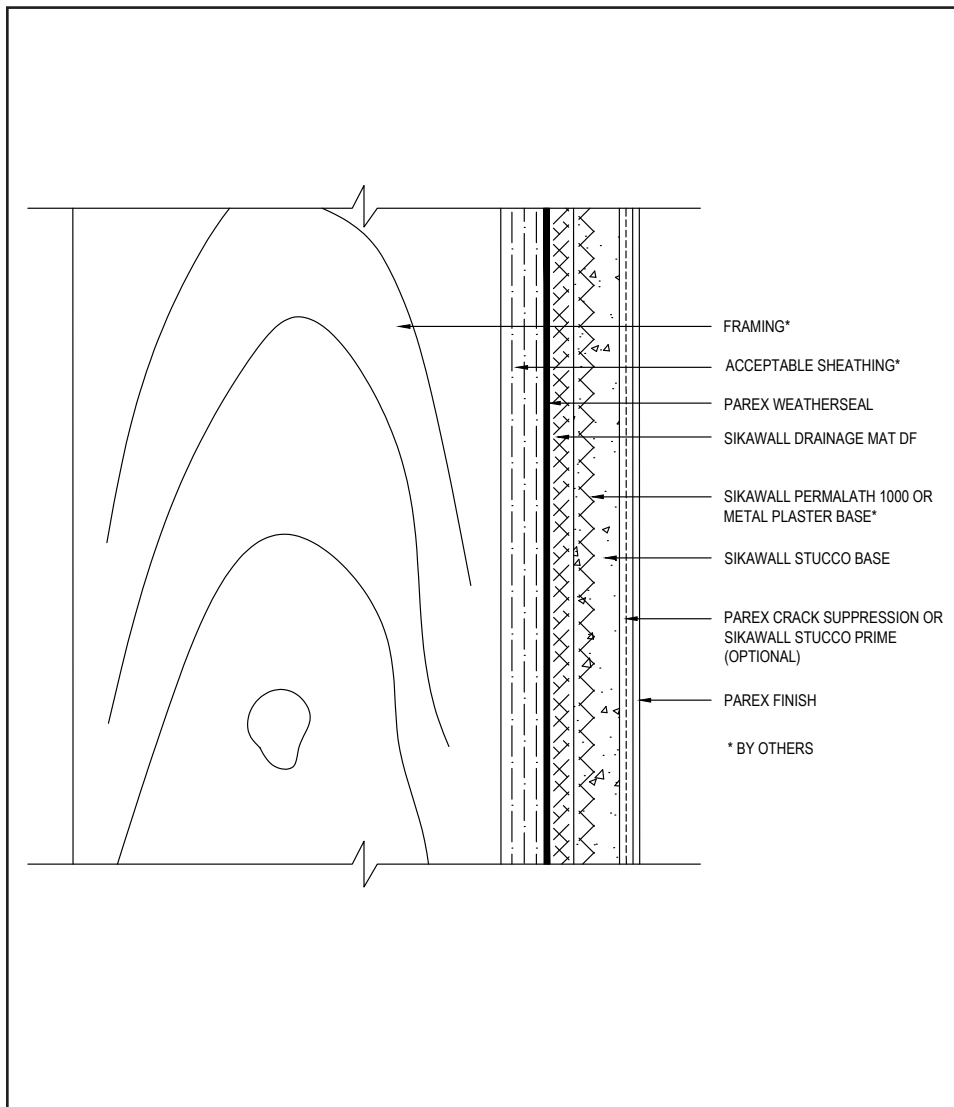
(*NOTE: BY OTHERS)

The details within are the latest recommendations and are represented in good faith by Sika Corporation US (hereinafter Sika). The details are subject to change without notice. Sika accepts no liability for the end use of the details. For conditions not shown, consult Sika for review of specific details.

- Install Sika materials in accordance with current installation instructions.
- Unsatisfactory conditions shall be reported to the General Contractor and corrected before the application of Sika products.

Armourwall Stucco WaterMaster DM

TYPICAL APPLICATION OVER WOOD FRAMING



02 0625

(*NOTE: BY OTHERS)

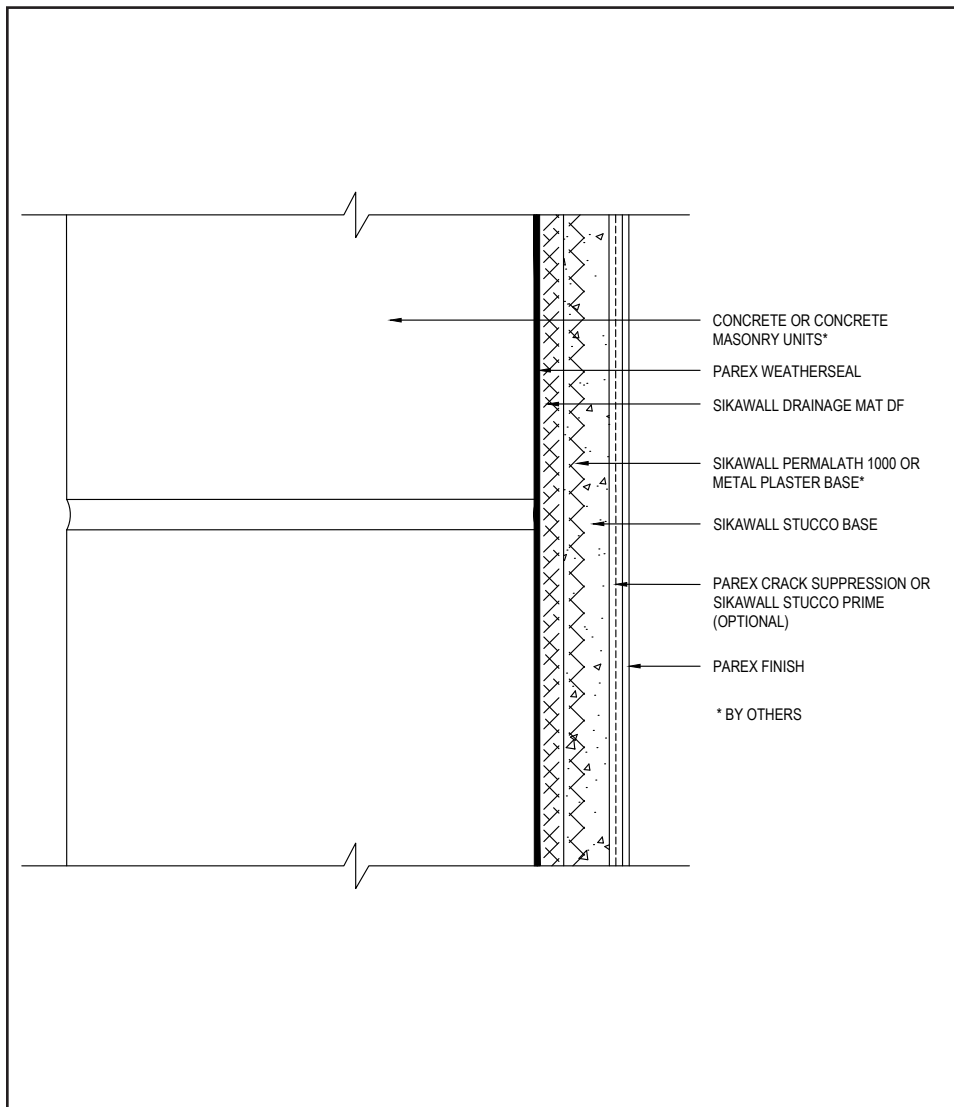
- Wood based sheathing requires two coats of Parex Weather Seal Spray and Roll On / Trowel on WG It can be sprayed to a 10-12 mils thickness per coat in one wet application.
- Ensure Parex Weather Seal Spray and Roll On / Trowel on WG is dry prior to SikaWall Drainage Mat DF installation.
- Install SikaWall Drainage Mat DF with the fabric side facing out.
- Parex Crack Suppression: Parex 355 SikaWall SRT Mesh embedded in Parex Base Coat or SikaWall Stucco Surface Leveler.

The details within are the latest recommendations and are represented in good faith by Sika Corporation US (hereinafter Sika). The details are subject to change without notice. Sika accepts no liability for the end use of the details. For conditions not shown, consult Sika for review of specific details.

- Install Sika materials in accordance with current installation instructions.
- Unsatisfactory conditions shall be reported to the General Contractor and corrected before the application of Sika products.

Armourwall Stucco WaterMaster DM

TYPICAL APPLICATION OVER CMU OR CONCRETE



03 0625

(*NOTE: BY OTHERS)

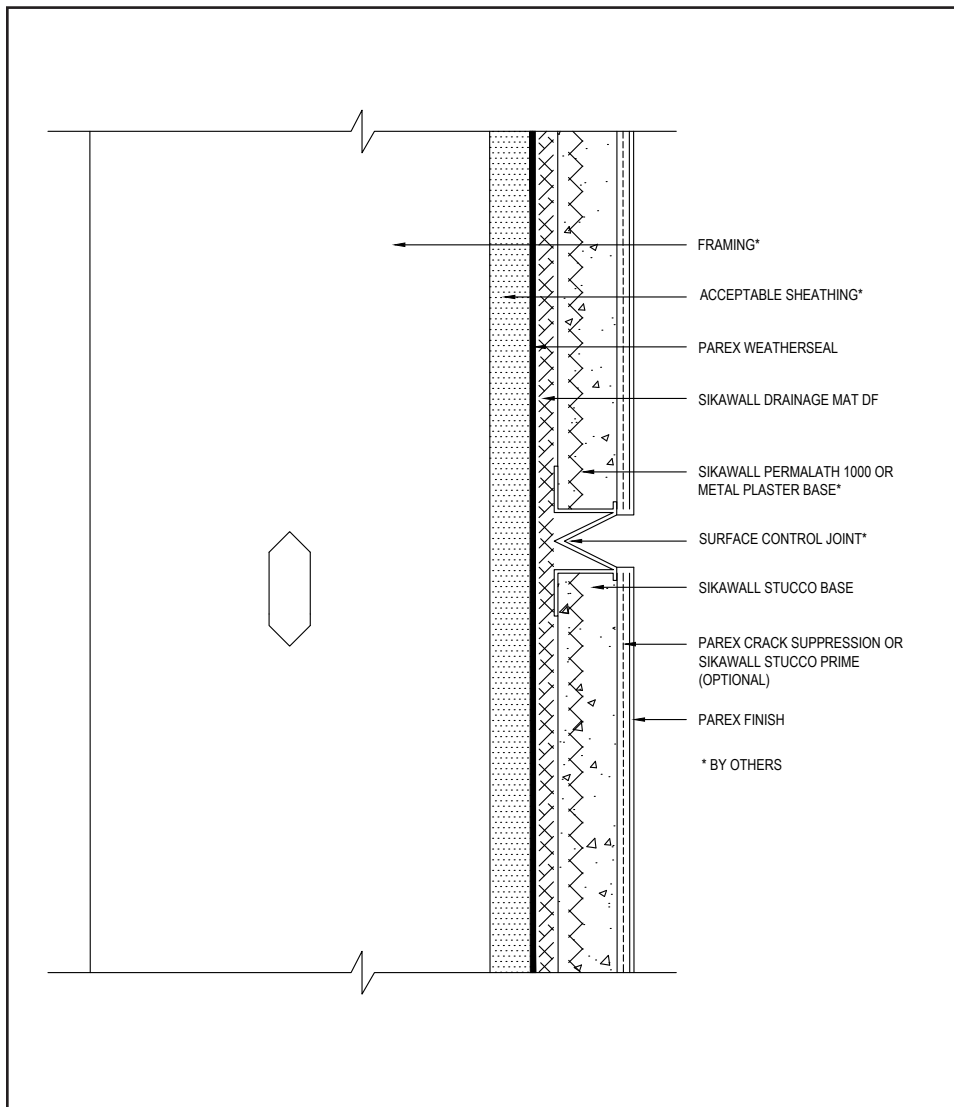
- Min 2 coats 10-12 mil thick of Parex Weather Seal Spray and Roll On /Trowel on WG are required to achieve a pin-hole free application.
- Ensure Parex WeatherSeal Spray and Roll On / Trowel on WG is dry prior to SikaWall Drainage Mat DF installation.
- Install SikaWall Drainage Mat DF with the fabric side facing out.
- Parex Crack Suppression: Parex 355 or SikaWall SRT Mesh embedded in Parex Base Coat or SikaWall Stucco Surface Leveler.

The details within are the latest recommendations and are represented in good faith by Sika Corporation US (hereinafter Sika). The details are subject to change without notice. Sika accepts no liability for the end use of the details. For conditions not shown, consult Sika for review of specific details.

- Install Sika materials in accordance with current installation instructions.
- Unsatisfactory conditions shall be reported to the General Contractor and corrected before the application of Sika products.

Armourwall Stucco WaterMaster DM

TYPICAL SURFACE CONTROL JOINT



- Provide control joints at a maximum 144 ft² (13.4 m²) and placement as determined by the design professional.
- Install per requirements of ASTM C1063.
- Lath must be broken at the joint accessory.
- Parex Crack Suppression: Parex 355 or SikaWall SRT Mesh embedded in Parex Base Coat or SikaWall Stucco Surface Leveler.

04 0625

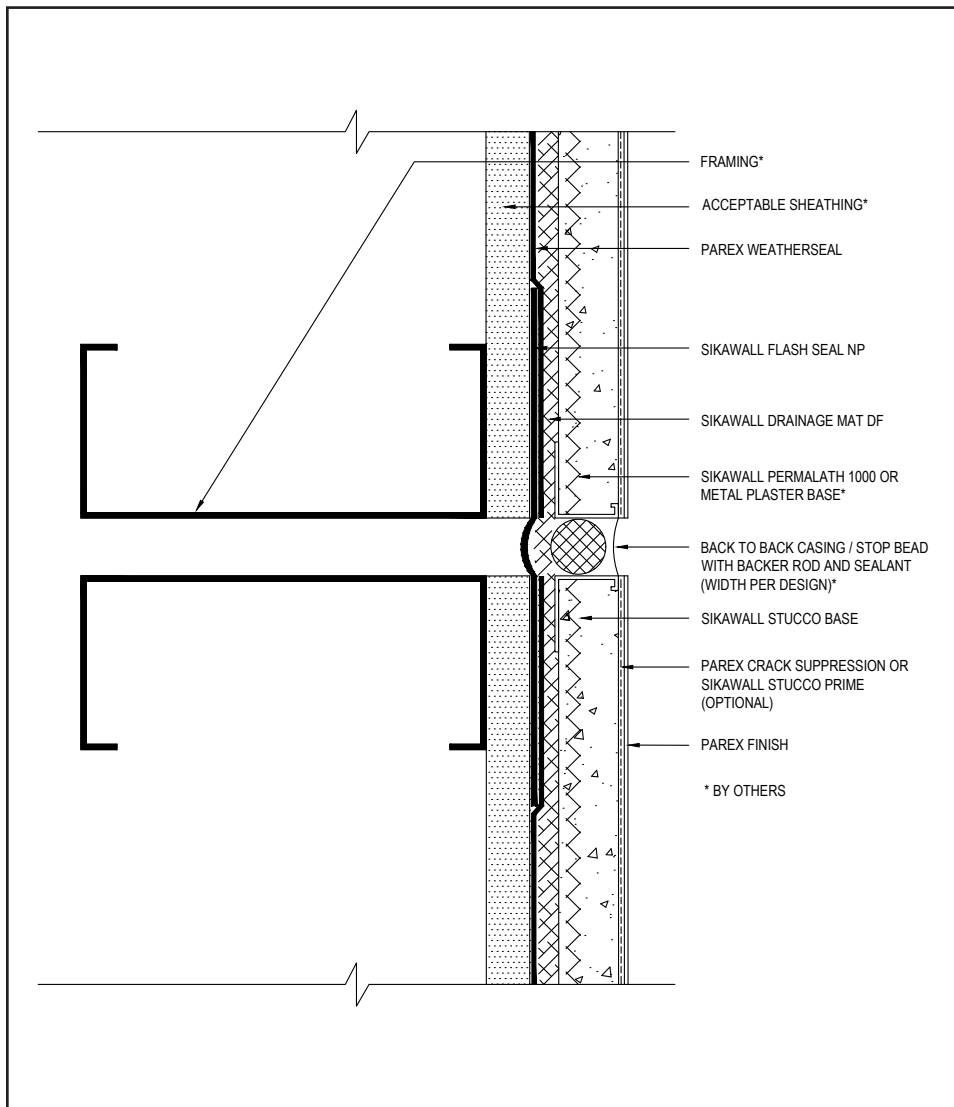
(*NOTE: BY OTHERS)

The details within are the latest recommendations and are represented in good faith by Sika Corporation US (hereinafter Sika). The details are subject to change without notice. Sika accepts no liability for the end use of the details. For conditions not shown, consult Sika for review of specific details.

- Install Sika materials in accordance with current installation instructions.
- Unsatisfactory conditions shall be reported to the General Contractor and corrected before the application of Sika products.

Armourwall Stucco WaterMaster DM

TYPICAL EXPANSION JOINT



05 0625

(*NOTE: BY OTHERS)

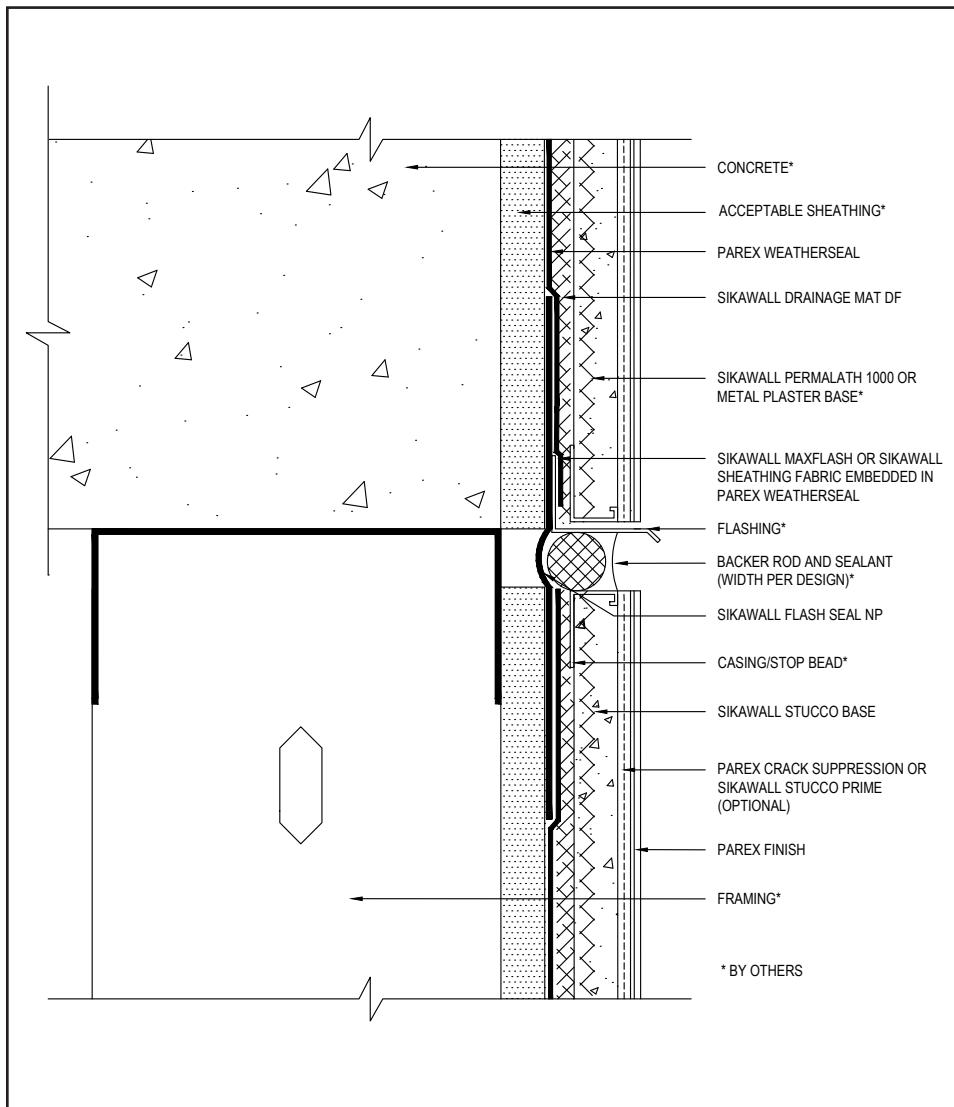
- Typical locations for system expansion joints are at building expansion joints, at prefabricated panel joints, floor lines of wood frame construction or where slip tracks are used in steel frame construction, where substrates change and where structural movement is anticipated. It is the sole responsibility of the project design team, including the architect, engineer, etc., to ultimately determine specific expansion joint placement, width and design. Detail specific locations in construction drawings.
- Install per requirements of ASTM C1063.
- Lath must be broken at the joint accessory.
- Parex Crack Suppression: Parex 355 or SikaWall SRT Mesh embedded in Parex Base Coat or SikaWall Stucco Surface Leveler.

The details within are the latest recommendations and are represented in good faith by Sika Corporation US (hereinafter Sika). The details are subject to change without notice. Sika accepts no liability for the end use of the details. For conditions not shown, consult Sika for review of specific details.

- Install Sika materials in accordance with current installation instructions.
- Unsatisfactory conditions shall be reported to the General Contractor and corrected before the application of Sika products.

Armourwall Stucco WaterMaster DM

TYPICAL DRAINAGE AT FLOOR LINE



- It is recommended that a means for drainage is provided at every third floor line.
- Provide sufficient slack in SikaWall Flash Seal NP to allow for movement.
- Parex Crack Suppression: Parex 355 or SikaWall SRT Mesh embedded in Parex Base Coat or SikaWall Stucco Surface Leveler.

06 0625

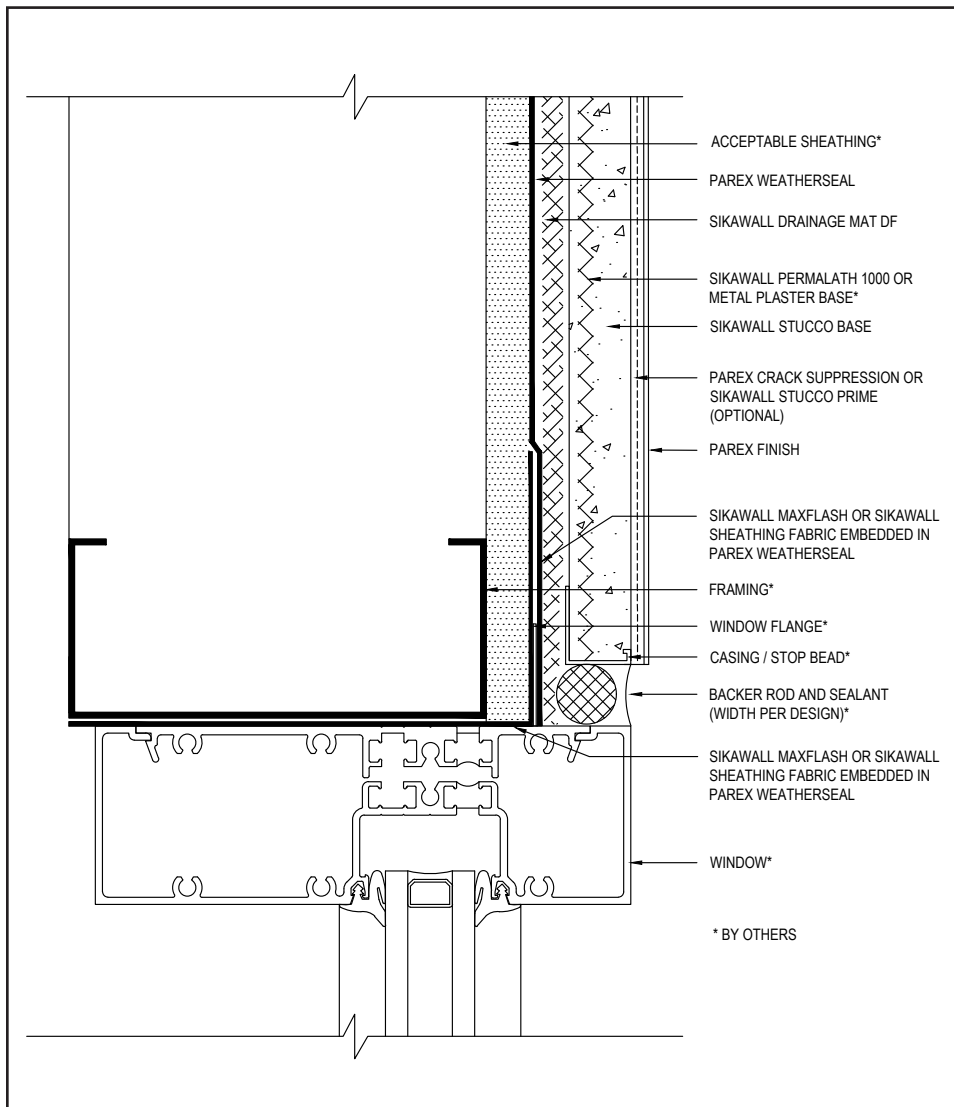
(*NOTE: BY OTHERS)

The details within are the latest recommendations and are represented in good faith by Sika Corporation US (hereinafter Sika). The details are subject to change without notice. Sika accepts no liability for the end use of the details. For conditions not shown, consult Sika for review of specific details.

- Install Sika materials in accordance with current installation instructions.
- Unsatisfactory conditions shall be reported to the General Contractor and corrected before the application of Sika products.

Armourwall Stucco WaterMaster DM

TYPICAL FLANGED WINDOW JAMB



07 0625

(*NOTE: BY OTHERS)

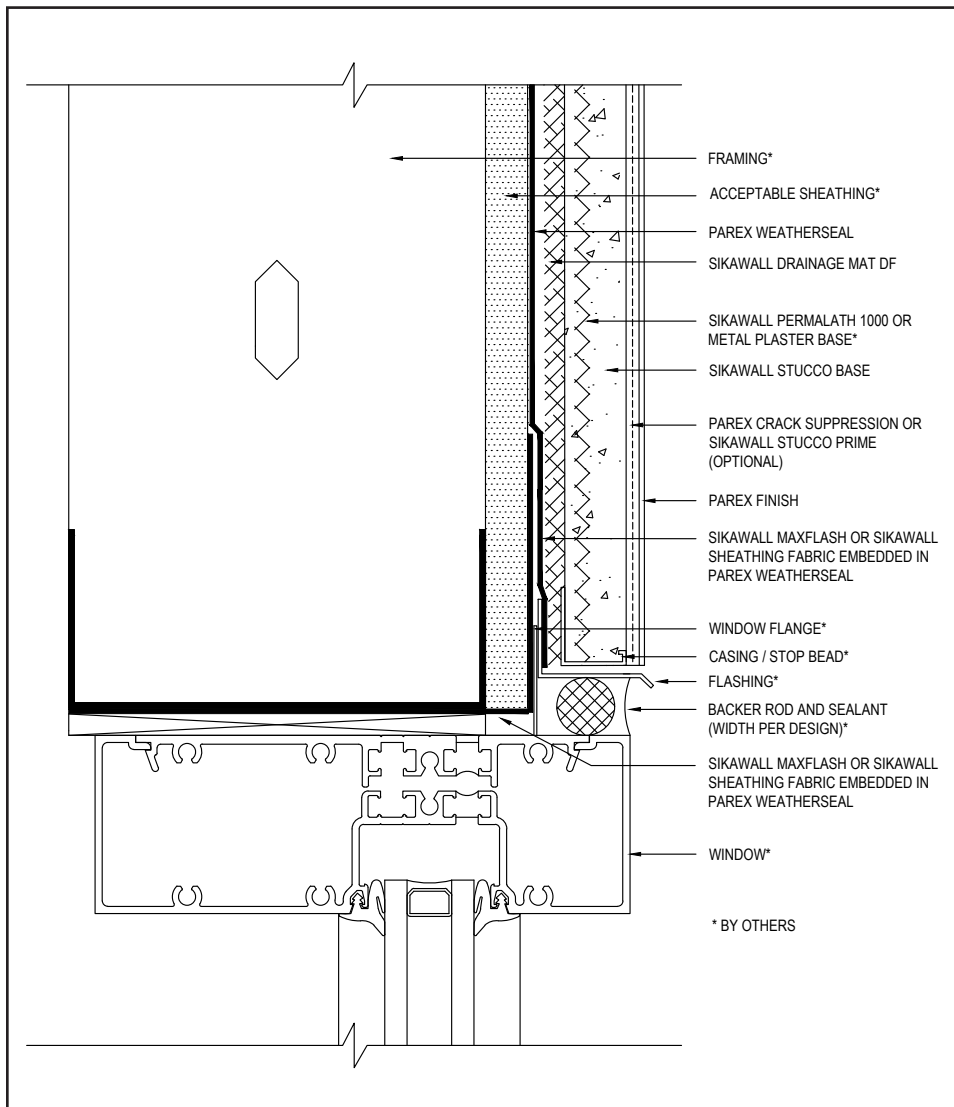
The details within are the latest recommendations and are represented in good faith by Sika Corporation US (hereinafter Sika). The details are subject to change without notice. Sika accepts no liability for the end use of the details. For conditions not shown, consult Sika for review of specific details.

- Install Sika materials in accordance with current installation instructions.
- Unsatisfactory conditions shall be reported to the General Contractor and corrected before the application of Sika products.

- Ensure Parex Weather Seal Spray and Roll On /Trowel on WG is properly applied into the rough openings in accordance with application guidelines. Reference published Parex WeatherSeal Details for additional information.
- Parex Joint/Transition Treatment Options: SikaWall MaxFlash, SikaWall Sheathing Fabric embedded in Parex Weather Seal Spray and Roll On /Trowel on WG or SikaWall Flash Seal NP.

Armourwall Stucco WaterMaster DM

TYPICAL FLANGED WINDOW HEAD



08 0625

(*NOTE: BY OTHERS)

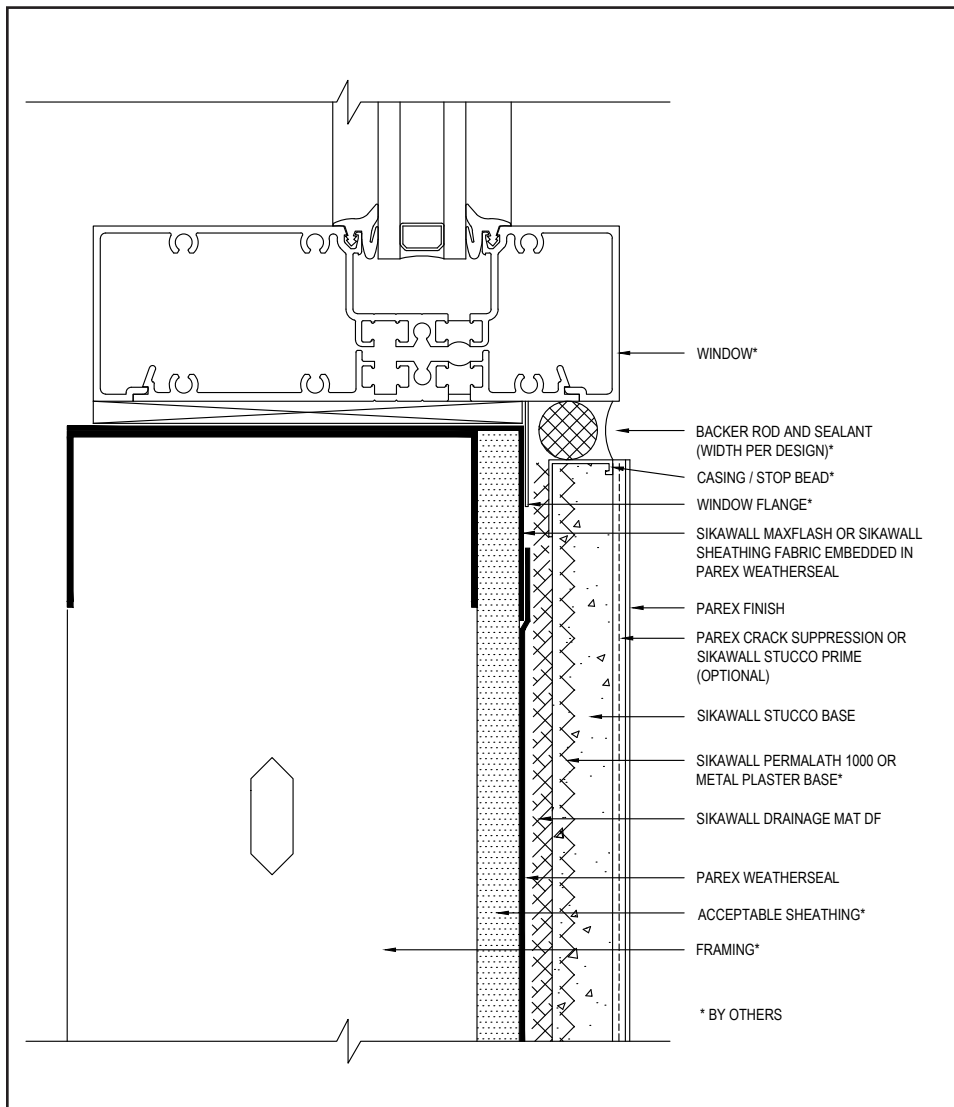
- Ensure Parex WeatherSeal Spray and Roll On / Trowel on WG is properly applied over the head flashing.
- Provide end-dams at flashing terminations.
- Parex Joint/Transition Treatment Options: SikaWall MaxFlash, SikaWall Sheathing Fabric embedded in Parex WeatherSeal Spray and Roll On / Trowel on WG or SikaWall Flash Seal NP.
- Parex Crack Suppression: Parex 355 or SikaWall SRT Mesh embedded in Parex Base Coat or SikaWall Stucco Surface Leveler.

The details within are the latest recommendations and are represented in good faith by Sika Corporation US (hereinafter Sika). The details are subject to change without notice. Sika accepts no liability for the end use of the details. For conditions not shown, consult Sika for review of specific details.

- Install Sika materials in accordance with current installation instructions.
- Unsatisfactory conditions shall be reported to the General Contractor and corrected before the application of Sika products.

Armourwall Stucco WaterMaster DM

TYPICAL FLANGED WINDOW SILL



09 0625

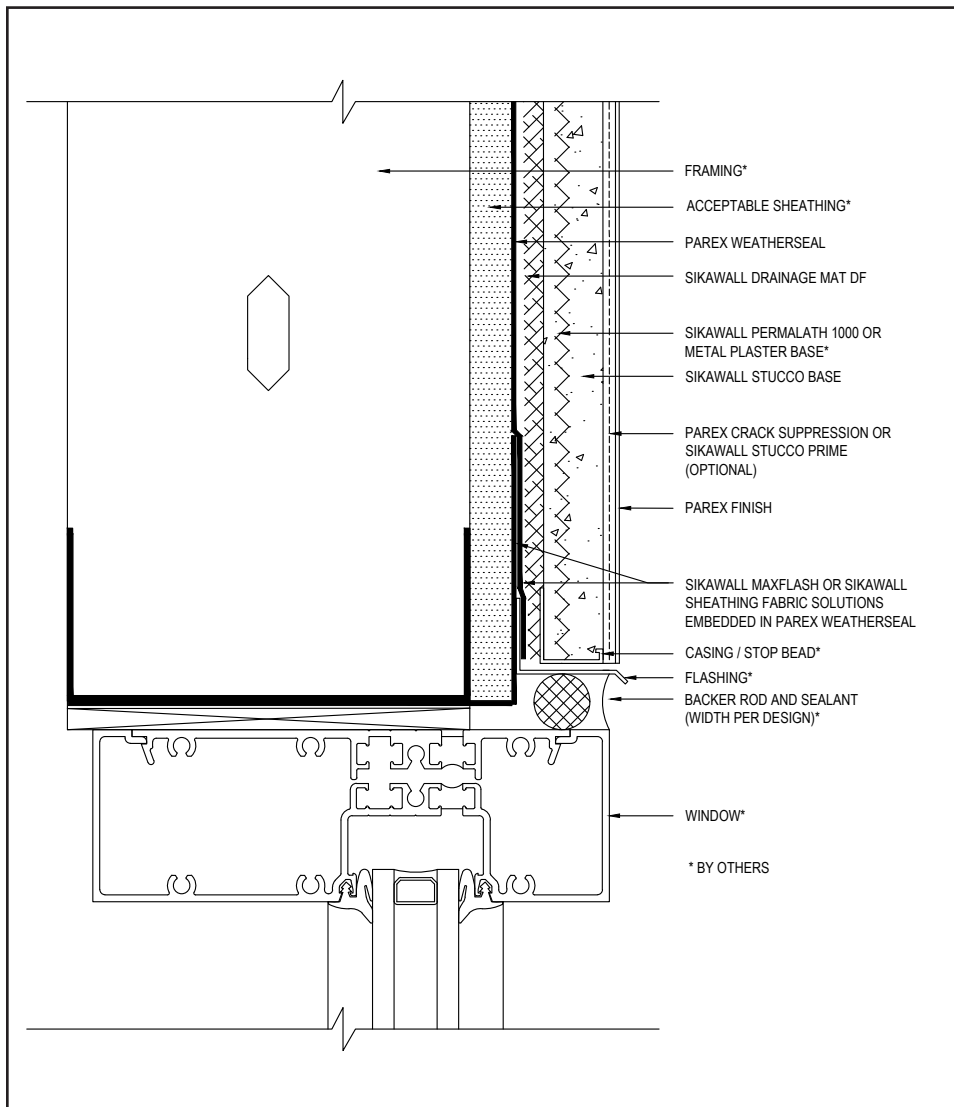
(*NOTE: BY OTHERS)

The details within are the latest recommendations and are represented in good faith by Sika Corporation US (hereinafter Sika). The details are subject to change without notice. Sika accepts no liability for the end use of the details. For conditions not shown, consult Sika for review of specific details.

- Install Sika materials in accordance with current installation instructions.
- Unsatisfactory conditions shall be reported to the General Contractor and corrected before the application of Sika products.

Armourwall Stucco WaterMaster DM

TYPICAL WINDOW HEAD



10 0625

(*NOTE: BY OTHERS)

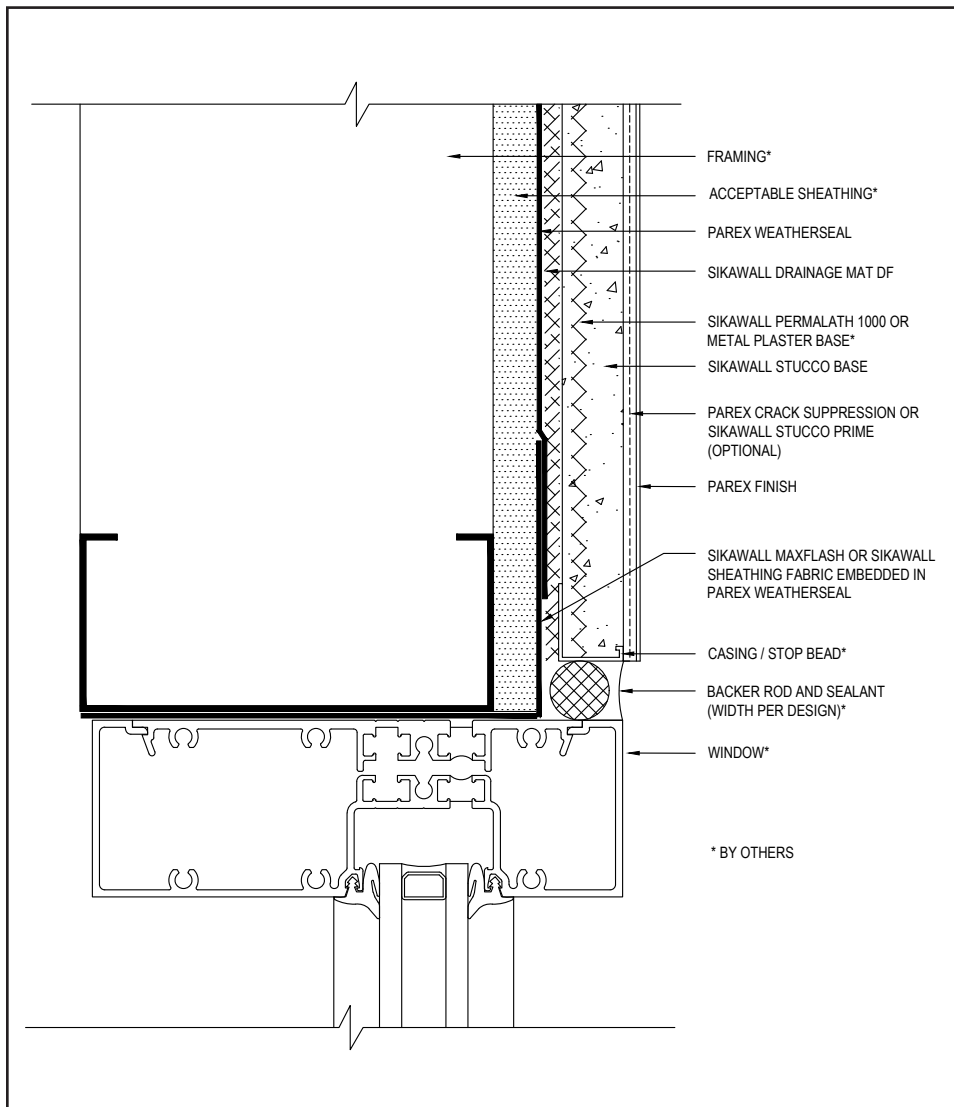
The details within are the latest recommendations and are represented in good faith by Sika Corporation US (hereinafter Sika). The details are subject to change without notice. Sika accepts no liability for the end use of the details. For conditions not shown, consult Sika for review of specific details.

- Install Sika materials in accordance with current installation instructions.
- Unsatisfactory conditions shall be reported to the General Contractor and corrected before the application of Sika products.

- Ensure Parex WeatherSeal Spray and Roll On / Trowel on WG is properly applied over the head flashing.
- Provide end-dams at flashing terminations.
- Parex Joint/Transition Treatment Options: SikaWall MaxFlash, SikaWall Sheathing Fabric embedded in Parex WeatherSeal Spray and Roll On / Trowel on WG or SikaWall Flash Seal NP.
- Parex Crack Suppression: Parex 355 or SikaWall SRT Mesh embedded in Parex Base Coat or SikaWall Stucco Surface Leveler.

Armourwall Stucco WaterMaster DM

TYPICAL WINDOW JAMB



- Ensure Parex WeatherSeal Spray and Roll On / Trowel on WG is properly applied into the rough openings.
- Parex Joint/Transition Treatment Options: SikaWall MaxFlash, SikaWall Sheathing Fabric embedded in Parex WeatherSeal Spray and Roll On / Trowel on WG or SikaWall Flash Seal NP.

11 0625

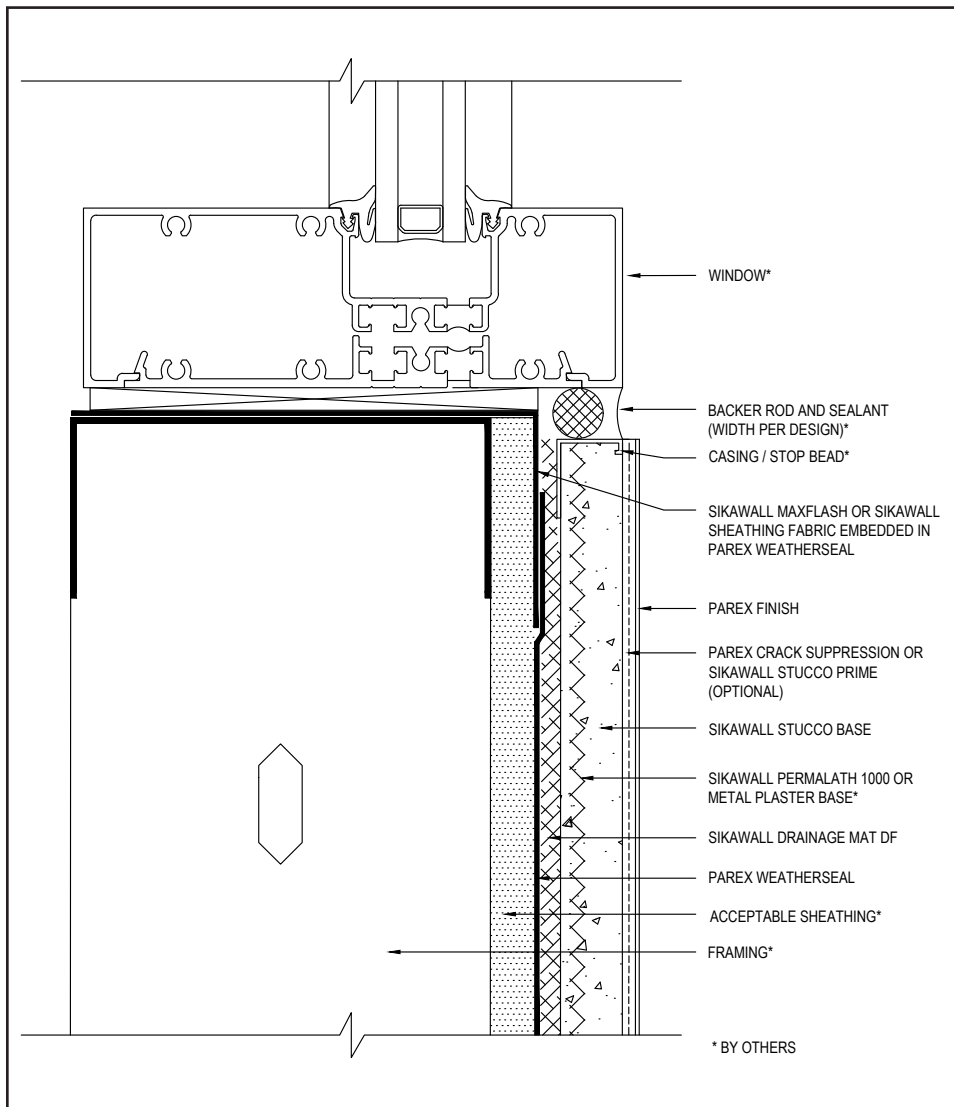
(*NOTE: BY OTHERS)

The details within are the latest recommendations and are represented in good faith by Sika Corporation US (hereinafter Sika). The details are subject to change without notice. Sika accepts no liability for the end use of the details. For conditions not shown, consult Sika for review of specific details.

- Install Sika materials in accordance with current installation instructions.
- Unsatisfactory conditions shall be reported to the General Contractor and corrected before the application of Sika products.

Armourwall Stucco WaterMaster DM

TYPICAL WINDOW SILL



12 0625

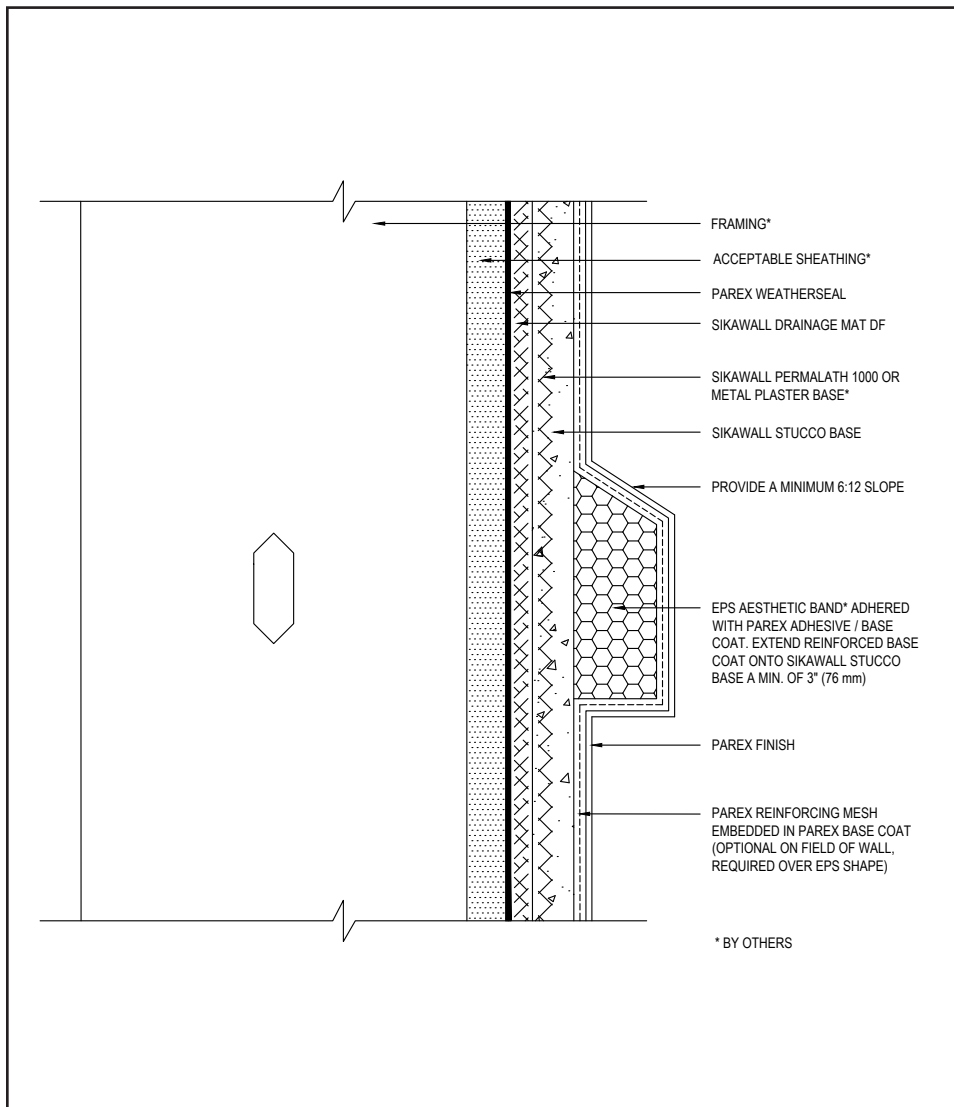
(*NOTE: BY OTHERS)

The details within are the latest recommendations and are represented in good faith by Sika Corporation US (hereinafter Sika). The details are subject to change without notice. Sika accepts no liability for the end use of the details. For conditions not shown, consult Sika for review of specific details.

- Install Sika materials in accordance with current installation instructions.
- Unsatisfactory conditions shall be reported to the General Contractor and corrected before the application of Sika products.

Armourwall Stucco WaterMaster DM

TYPICAL EPS SHAPE APPLICATION



- Overlap reinforced base coat onto SikaWall Stucco Base a minimum of 3" (76 mm).
- On horizontal projections greater than 1" maintain a minimum 6:12 slope.

13 0625

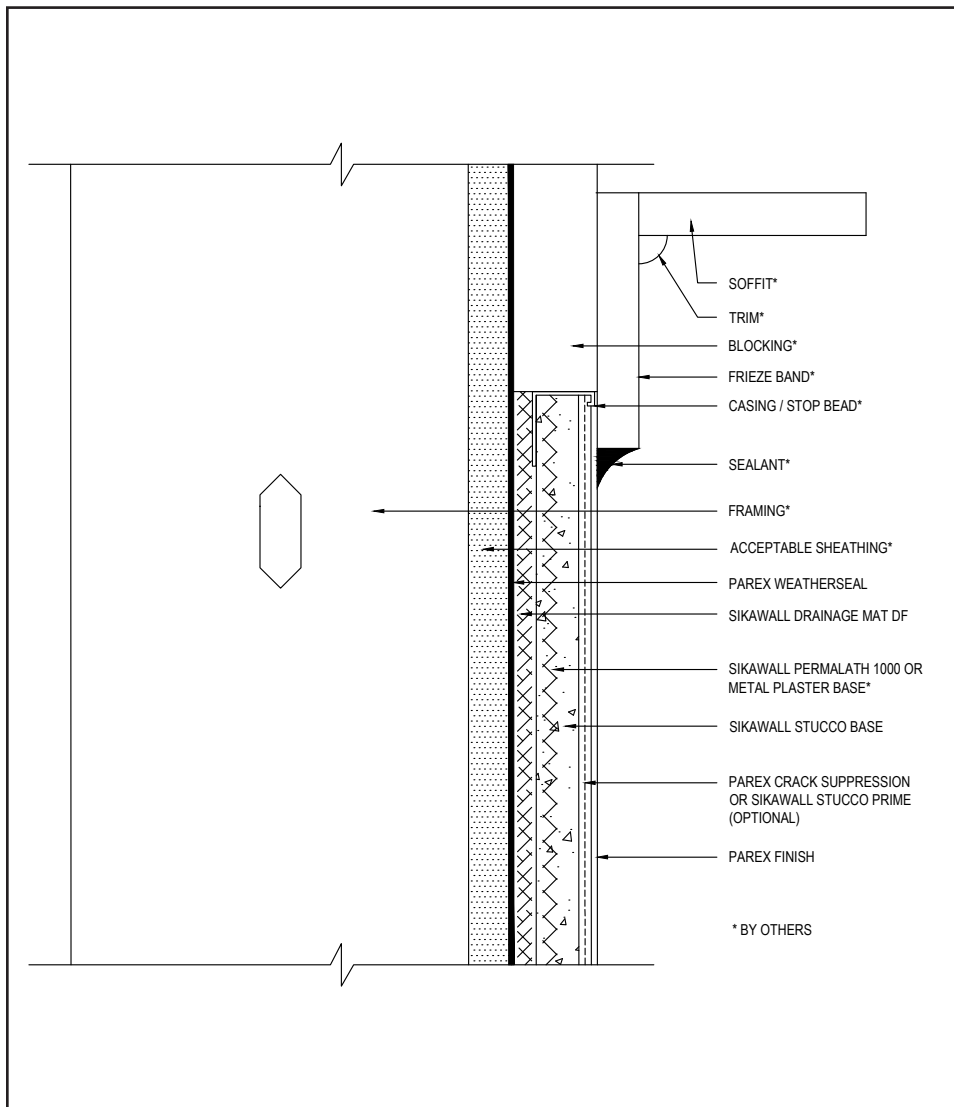
(*NOTE: BY OTHERS)

The details within are the latest recommendations and are represented in good faith by Sika Corporation US (hereinafter Sika). The details are subject to change without notice. Sika accepts no liability for the end use of the details. For conditions not shown, consult Sika for review of specific details.

- Install Sika materials in accordance with current installation instructions.
- Unsatisfactory conditions shall be reported to the General Contractor and corrected before the application of Sika products.

Armourwall Stucco WaterMaster DM

TYPICAL TERMINATION AT SOFFIT OR GABLE



- Lap frieze band a minimum of 2" (50 mm) over the ArmourWall Watermaster DM
- Parex Crack Suppression: Parex 355 or SikaWall SRT Mesh embedded in Parex Base Coat or SikaWall Stucco Surface Leveler.

14 0625

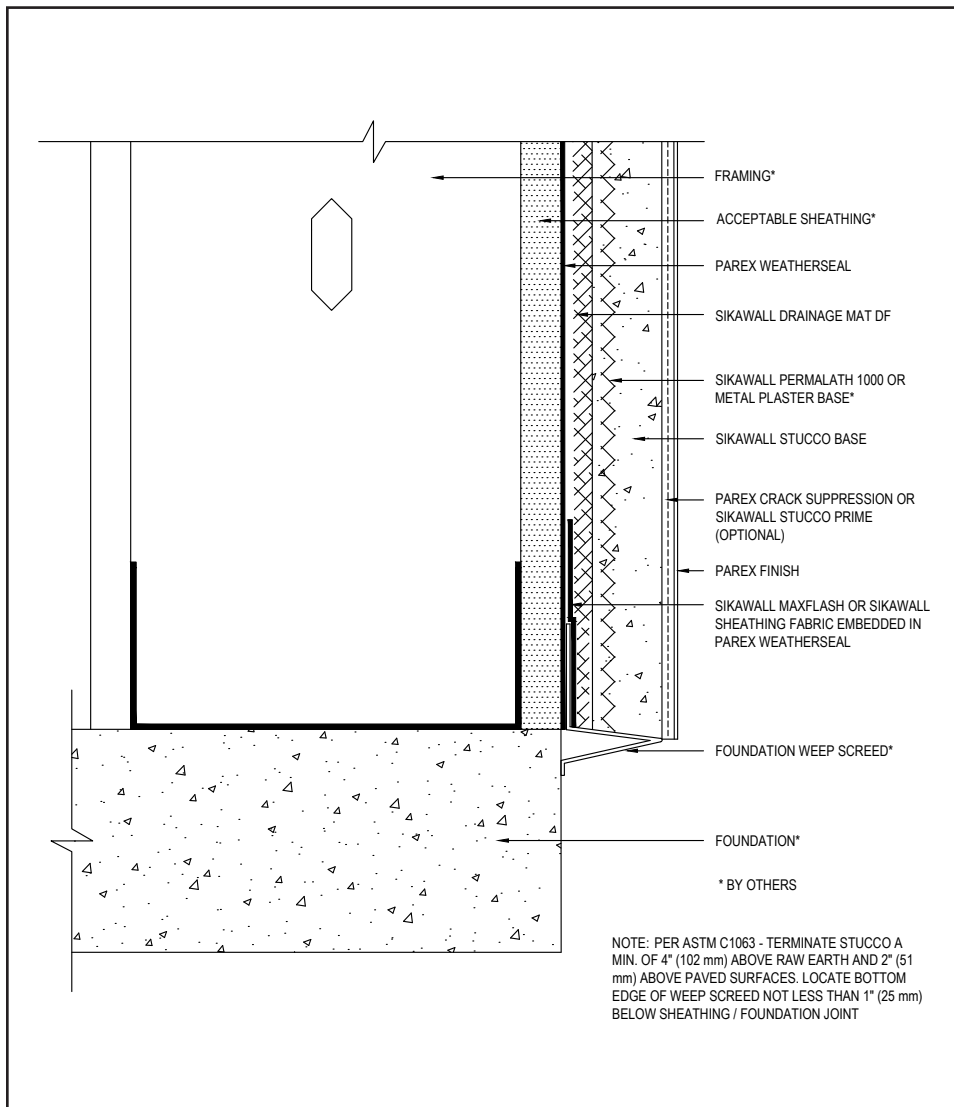
(*NOTE: BY OTHERS)

The details within are the latest recommendations and are represented in good faith by Sika Corporation US (hereinafter Sika). The details are subject to change without notice. Sika accepts no liability for the end use of the details. For conditions not shown, consult Sika for review of specific details.

- Install Sika materials in accordance with current installation instructions.
- Unsatisfactory conditions shall be reported to the General Contractor and corrected before the application of Sika products.

Armourwall Stucco WaterMaster DM

TYPICAL TERMINATION AT FOUNDATION



- Per ASTM C1063 terminate the stucco wall system a minimum of 4" (100 mm) above raw earth and 2" (50 mm) above paved surface.
- Parex Joint/Transition Treatment Options: SikaWall MaxFlash, SikaWall Sheathing Fabric embedded in Parex WeatherSeal Spray and Roll On / Trowel on WG or SikaWall Flash Seal NP.
- Parex Crack Suppression: Parex 355 or SikaWall SRT Mesh embedded in Parex Base Coat or SikaWall Stucco Surface Leveler.

15 0625

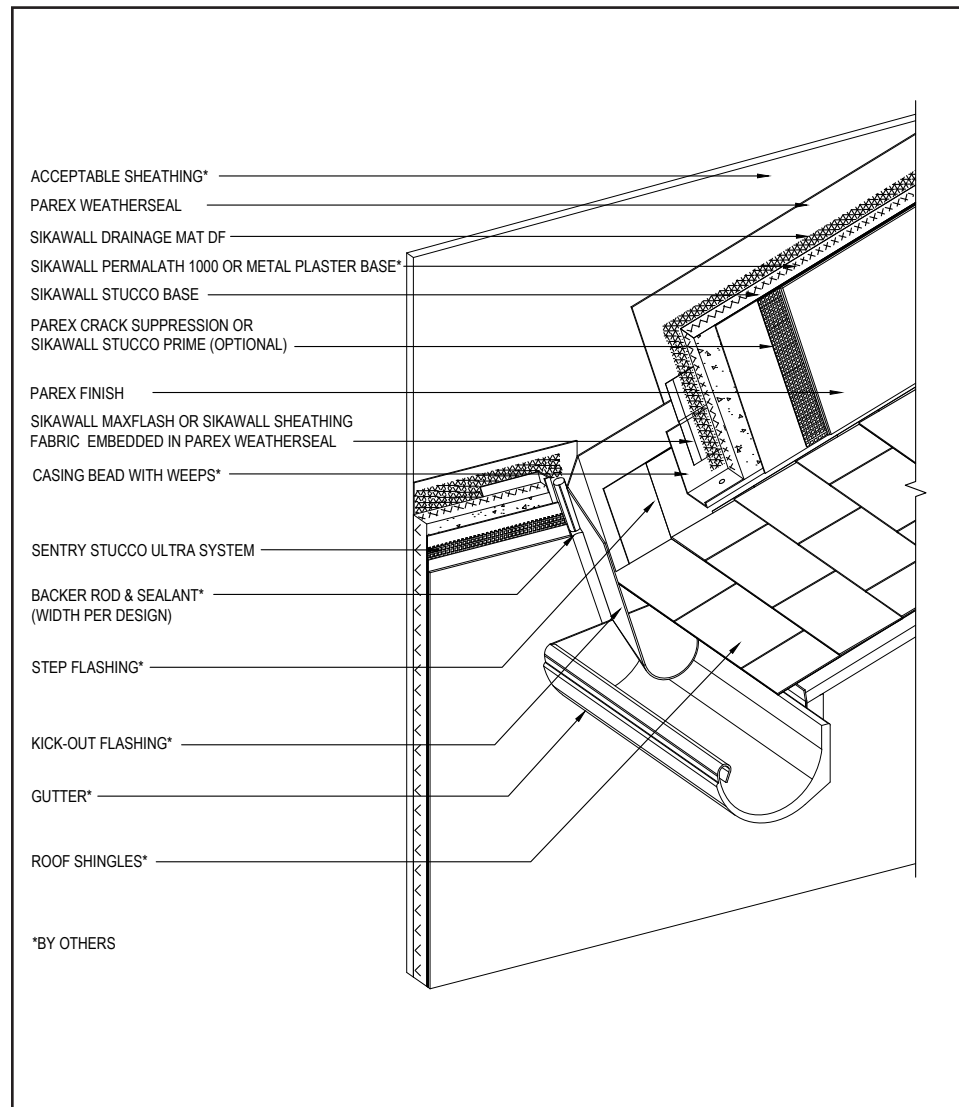
(*NOTE: BY OTHERS)

The details within are the latest recommendations and are represented in good faith by Sika Corporation US (hereinafter Sika). The details are subject to change without notice. Sika accepts no liability for the end use of the details. For conditions not shown, consult Sika for review of specific details.

- Install Sika materials in accordance with current installation instructions.
- Unsatisfactory conditions shall be reported to the General Contractor and corrected before the application of Sika products.

Armourwall Stucco WaterMaster DM

TYPICAL KICK-OUT FLASHING AT SLOPED ROOF



16 0625

(*NOTE: BY OTHERS)

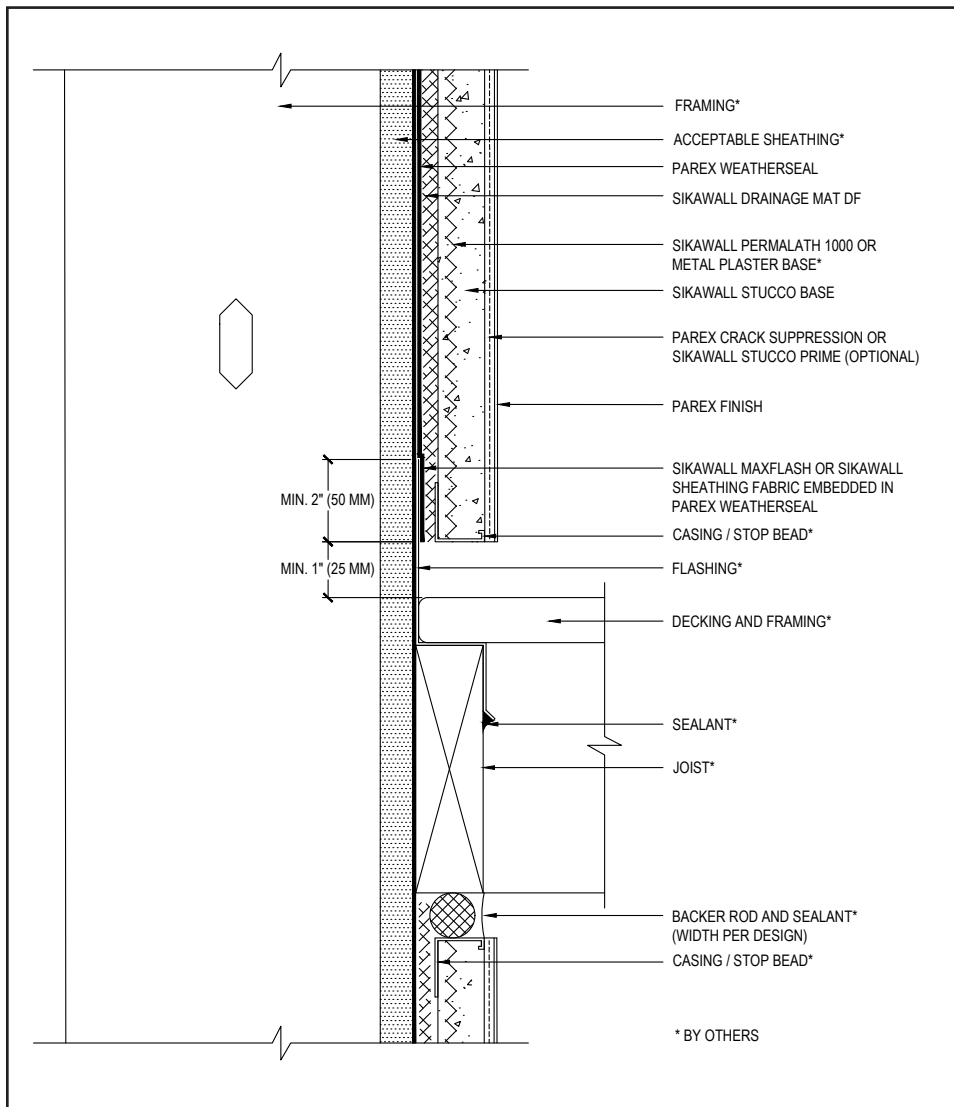
- Terminate ArmourWall Watermaster DM System a minimum of 2" (50 mm) above sloped roof.
- Ensure step flashing is a minimum 2" (50 mm) behind ArmourWall Watermaster DM Wall System.
- Kick-out flashing shall be a minimum 4" (100 mm) in height.
- Kick-out flashing shall be angled a minimum 100° with seams sealed or soldered.
- Ensure a means for drainage is provided at system termination at roof.
- Parex Joint/Transition Treatment Options: SikaWall MaxFlash, SikaWall Sheathing Fabric embedded in Parex WeatherSeal Spray and Roll On / Trowel on WG or SikaWall Flash Seal NP.
- Parex Crack Suppression: Parex 355 or SikaWall SRT Mesh embedded in Parex Base Coat or SikaWall Stucco Surface Leveler.

The details within are the latest recommendations and are represented in good faith by Sika Corporation US (hereinafter Sika). The details are subject to change without notice. Sika accepts no liability for the end use of the details. For conditions not shown, consult Sika for review of specific details.

- Install Sika materials in accordance with current installation instructions.
- Unsatisfactory conditions shall be reported to the General Contractor and corrected before the application of Sika products.

Armourwall Stucco WaterMaster DM

TYPICAL TERMINATION AT DECK



- Parex WeatherSeal Spray and Roll On / Trowel on WG shall be installed over flashing.
- Parex WeatherSeal Spray and Roll On / Trowel on WG shall be installed up and behind metal flashing before terminating.
- Provide end-dams at flashing terminations as required.
- Parex Joint/Transition Treatment Options: SikaWall MaxFlash, SikaWall Sheathing Fabric embedded in Parex WeatherSeal Spray and Roll On / Trowel on WG or SikaWall Flash Seal NP.
- Parex Crack Suppression: Parex 355 or SikaWall SRT Mesh embedded in Parex Base Coat or SikaWall Stucco Surface Leveler.

17 0625

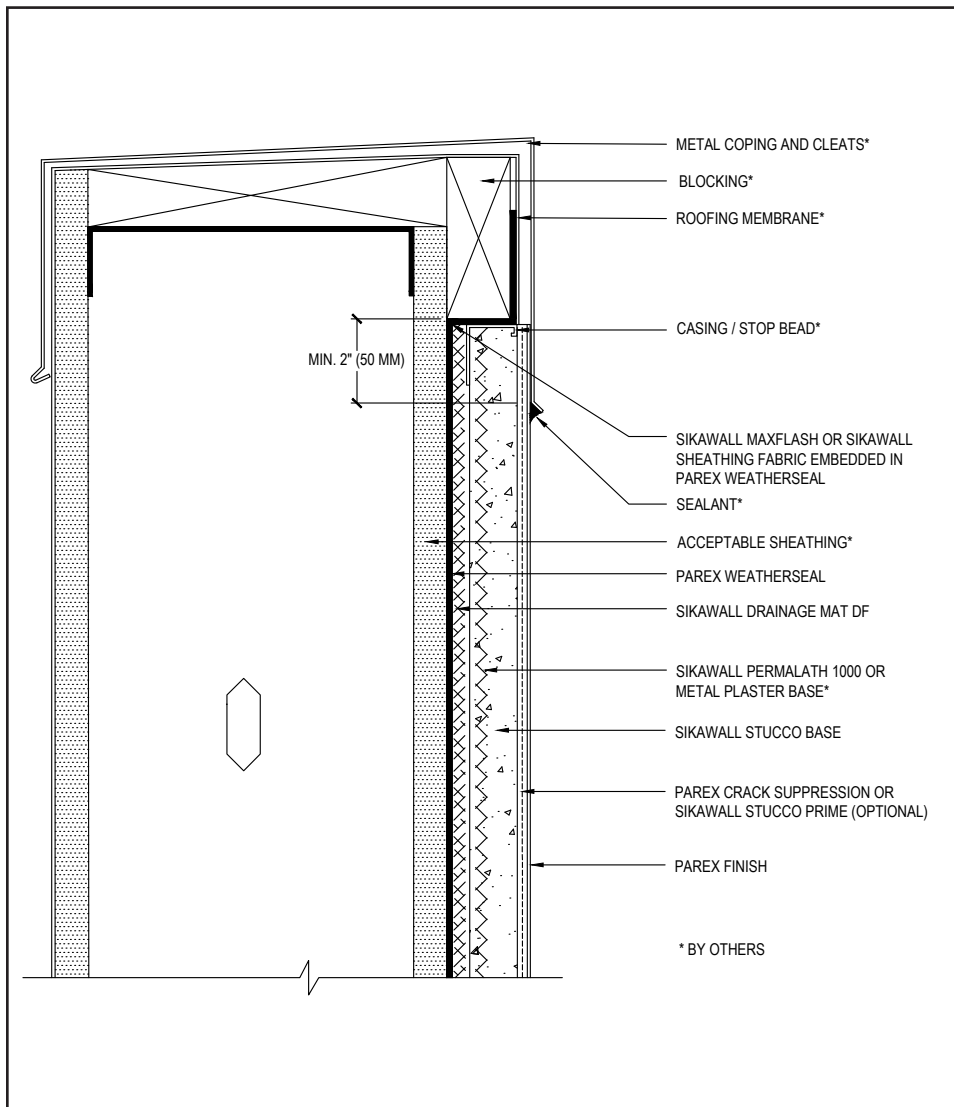
(*NOTE: BY OTHERS)

The details within are the latest recommendations and are represented in good faith by Sika Corporation US (hereinafter Sika). The details are subject to change without notice. Sika accepts no liability for the end use of the details. For conditions not shown, consult Sika for review of specific details.

- Install Sika materials in accordance with current installation instructions.
- Unsatisfactory conditions shall be reported to the General Contractor and corrected before the application of Sika products.

Armourwall Stucco WaterMaster DM

TYPICAL METAL COPING



- Extend coping a minimum of 2" (50 mm) on to face of ArmourWall WaterMaster DM Wall System and seal drip edge.
- Parex WeatherSeal Spray and Roll On / Trowel on WG shall be installed onto bottom and face of blocking.
- Parex Crack Suppression: Parex 355 or SikaWall SRT Mesh embedded in Parex Base Coat or SikaWall Stucco Surface Leveler.

18 0625

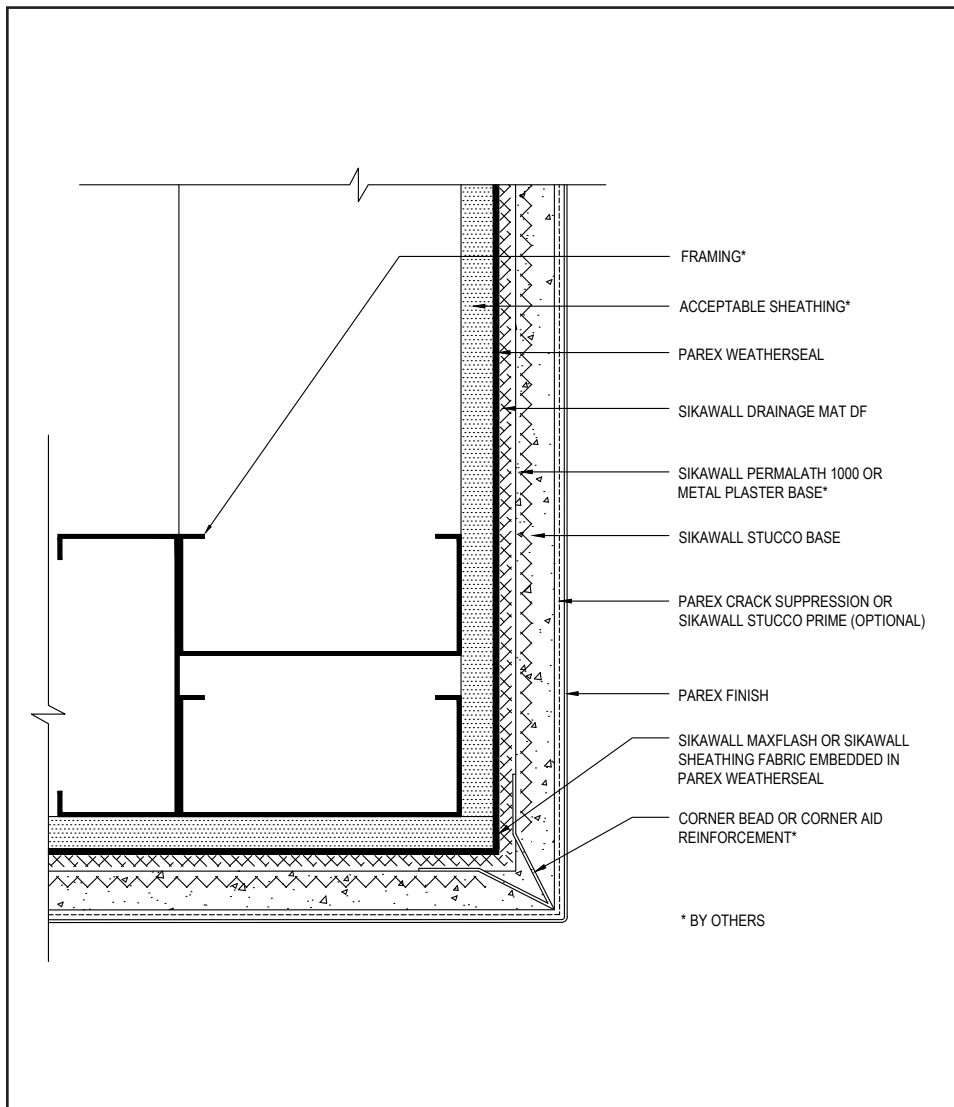
(*NOTE: BY OTHERS)

The details within are the latest recommendations and are represented in good faith by Sika Corporation US (hereinafter Sika). The details are subject to change without notice. Sika accepts no liability for the end use of the details. For conditions not shown, consult Sika for review of specific details.

- Install Sika materials in accordance with current installation instructions.
- Unsatisfactory conditions shall be reported to the General Contractor and corrected before the application of Sika products.

Armourwall Stucco WaterMaster DM

TYPICAL CORNER BEAD



- Attach corner bead over lath.
- Corner bead shall be filled solid with SikaWall Stucco Base as required.
- Parex Crack Suppression: Parex 355 or SikaWall SRT Mesh embedded in Parex Base Coat or SikaWall Stucco Surface Leveler.

19 0625

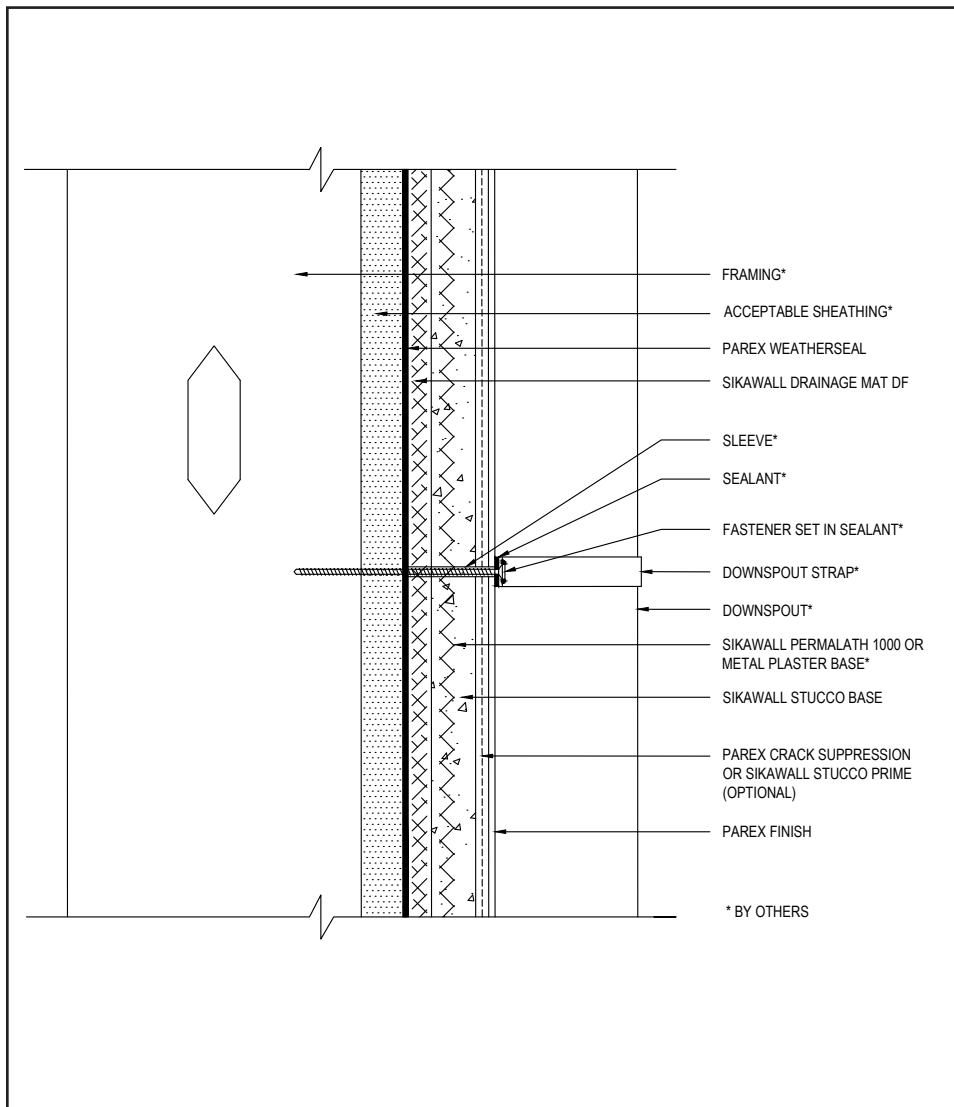
(*NOTE: BY OTHERS)

The details within are the latest recommendations and are represented in good faith by Sika Corporation US (hereinafter Sika). The details are subject to change without notice. Sika accepts no liability for the end use of the details. For conditions not shown, consult Sika for review of specific details.

- Install Sika materials in accordance with current installation instructions.
- Unsatisfactory conditions shall be reported to the General Contractor and corrected before the application of Sika products.

Armourwall Stucco WaterMaster DM

TYPICAL DOWNSPOUT APPLICATION



- Properly seal all penetrations through the ArmourWall WaterMaster DM Wall System.

20 0625

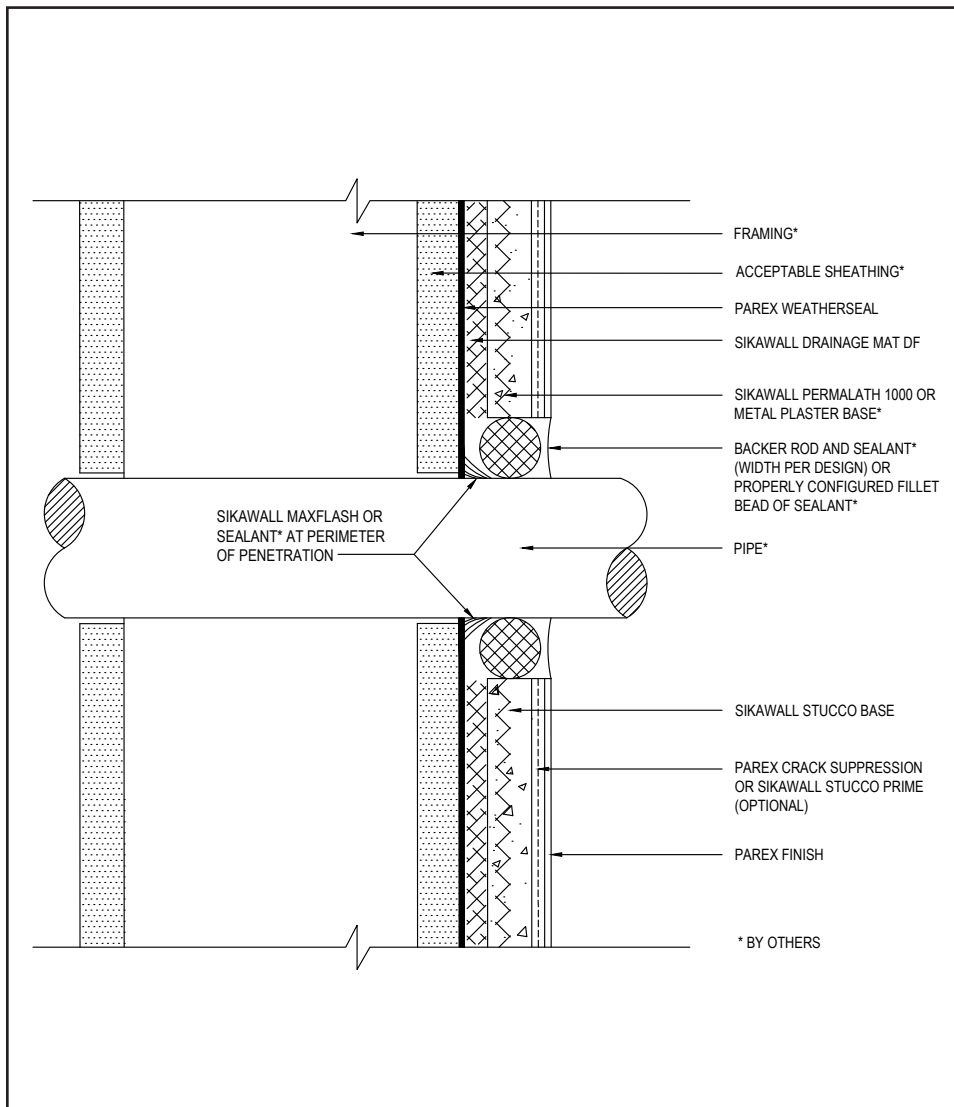
(*NOTE: BY OTHERS)

The details within are the latest recommendations and are represented in good faith by Sika Corporation US (hereinafter Sika). The details are subject to change without notice. Sika accepts no liability for the end use of the details. For conditions not shown, consult Sika for review of specific details.

- Install Sika materials in accordance with current installation instructions.
- Unsatisfactory conditions shall be reported to the General Contractor and corrected before the application of Sika products.

Armourwall Stucco WaterMaster DM

TYPICAL PIPE PENETRATION



- Properly seal all penetrations through the Parex Armourwall WaterMaster DM Wall System.
- Parex Crack Suppression: Parex 355 or SikaWall SRT Mesh embedded in Parex Base Coat or SikaWall Stucco Surface Leveler.

21 0625

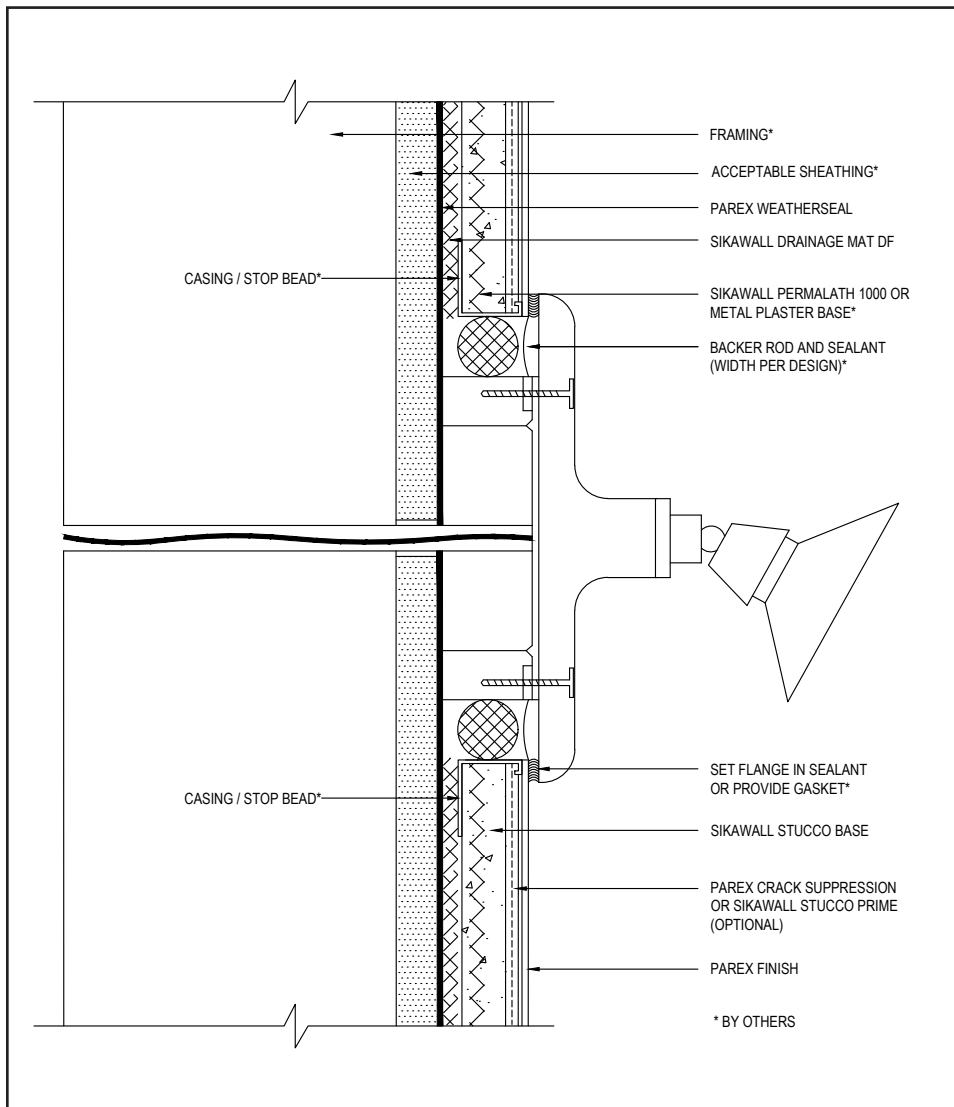
(*NOTE: BY OTHERS)

The details within are the latest recommendations and are represented in good faith by Sika Corporation US (hereinafter Sika). The details are subject to change without notice. Sika accepts no liability for the end use of the details. For conditions not shown, consult Sika for review of specific details.

- Install Sika materials in accordance with current installation instructions.
- Unsatisfactory conditions shall be reported to the General Contractor and corrected before the application of Sika products.

Armourwall Stucco WaterMaster DM

TYPICAL LIGHT FIXTURE



- Properly seal all penetrations through the Parex Armourwall WaterMaster DM Wall System.
- Parex Crack Suppression: Parex 355 or SikaWall SRT Mesh embedded in Parex Base Coat or SikaWall Stucco Surface Leveler.

22 0625

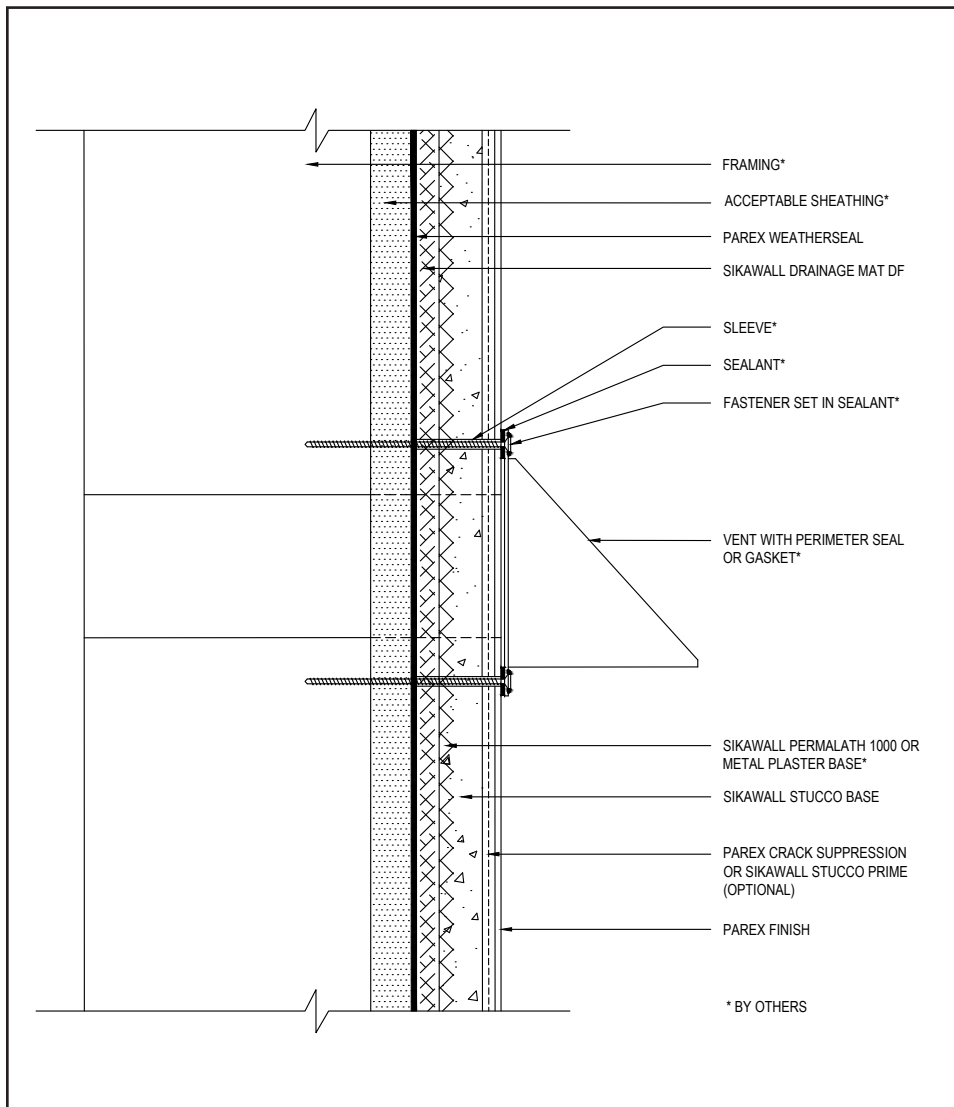
(*NOTE: BY OTHERS)

The details within are the latest recommendations and are represented in good faith by Sika Corporation US (hereinafter Sika). The details are subject to change without notice. Sika accepts no liability for the end use of the details. For conditions not shown, consult Sika for review of specific details.

- Install Sika materials in accordance with current installation instructions.
- Unsatisfactory conditions shall be reported to the General Contractor and corrected before the application of Sika products.

Armourwall Stucco WaterMaster DM

TYPICAL DRYER VENT



- Properly seal all penetrations through the Armourwall WaterMaster DM Wall System.
- Parex Crack Suppression: Parex 355 or SikaWall SRT Mesh embedded in Parex Base Coat or SikaWall Stucco Surface Leveler.

23 0625

(*NOTE: BY OTHERS)

The details within are the latest recommendations and are represented in good faith by Sika Corporation US (hereinafter Sika). The details are subject to change without notice. Sika accepts no liability for the end use of the details. For conditions not shown, consult Sika for review of specific details.

- Install Sika materials in accordance with current installation instructions.
- Unsatisfactory conditions shall be reported to the General Contractor and corrected before the application of Sika products.



BUILDING TRUST



LIMITED WARRANTY NOTICE

Prior to each use of any product of Sika Corporation, its subsidiaries or affiliates ("SIKA"), the user must always read and follow the warnings and instructions on the product's most current product label, Product Data Sheet and Safety Data Sheet which are available at usa.sika.com/parex or by calling our Technical Service Department at +1 (800) 226-2424.

Nothing contained in any SIKA literature or materials relieves the user of the obligation to read and follow the warnings and instructions for each SIKA product as set forth in the current product label, Product Data Sheet and Safety Data Sheet prior to use of the SIKA product.

SIKA warrants this product for one year from date of installation to be free from manufacturing defects and to meet the technical properties on the current Product Data Sheet if used as directed within the product's shelf life. User determines suitability of product for intended use and assumes all risks. User's and/or buyer's sole remedy shall be limited to the purchase price or replacement of this product exclusive of any labor costs. NO OTHER WARRANTIES EXPRESS OR IMPLIED SHALL APPLY INCLUDING ANY WARRANTY OF MERCHANTABILITY OR FITNESS FOR A PARTICULAR PURPOSE. SIKA SHALL NOT BE LIABLE UNDER ANY LEGAL THEORY FOR SPECIAL OR CONSEQUENTIAL DAMAGES. SIKA SHALL NOT BE RESPONSIBLE FOR THE USE OF THIS PRODUCT IN A MANNER TO INFRINGE ON ANY PATENT OR ANY OTHER INTELLECTUAL PROPERTY RIGHTS HELD BY OTHERS. Sale of SIKA products are subject to the Terms and Conditions of Sale which are available at usa.sika.com.

For the most current version of this literature, please visit our website at usa.sika.com/parex.

Sika Corporation

201 Polito Avenue
Lyndhurst, NJ 07071 USA
Customer Service +1 (800) 433-9517
Technical Service +1 (800) 226-2424
usa.sika.com/parex

Rev June 2025

BUILDING TRUST

