

**LaHabra®**



# **Finescreen 1000 CI with MaxGrip Veneer Adhesive**

Cement Board System with Integral Continuous  
Insulation and Adhered Veneer

Typical 2D Details

**BUILDING TRUST**



# Finescreen 1000 CI with MaxGrip Veneer Adhesive

## Typical 2D Details

### Table of Contents

- |   |  |
|---|--|
| 1. Finescreen 1000 CI with MaxGrip Veneer Adhesive System (Isometric) | 15. Acrylic Finish to Adhered Veneer Transition    |
| 2. Finescreen 1000 CI with MaxGrip Veneer Adhesive System (Plan View) | 16. Light Fixture                                  |
| 3. Window Jamb Detail with Casing Bead (Plan View)                    | 17. Pipe Penetration                               |
| 4. Window Jamb Detail with Backwrap (Plan View)                       | 18. Sign Attachment                                |
| 5. Window Head Detail with Starter Track                              | 19. Outside Corner Miter Detail (Plan View)        |
| 6. Window Head Detail with Backwrap                                   | 20. Outside Corner Detail Rabbet Joint (Plan View) |
| 7. Window Sill Detail with Casing Bead                                | 21. Inside Corner Detail                           |
| 8. Window Sill Detail with Backwrap                                   | 22. Fascia/Soffit                                  |
| 9. Expansion Joint at Floor Line with Casing Bead                     | 23. Termination at Foundation                      |
| 10. Expansion Joint at Floor Line with Backwrap                       | 24. Metal Coping Detail                            |
| 11. Drainage at Floor Line with Starter Track and Casing Bead         | 25. Termination Above Flat Roof                    |
| 12. Drainage at Floor Line with Backwrap                              |  |
| 13. Vertical Expansion Joint with Casing Bead (Plan View)             |  |
| 14. Vertical Expansion Joint with Backwrap (Plan View)                |  |

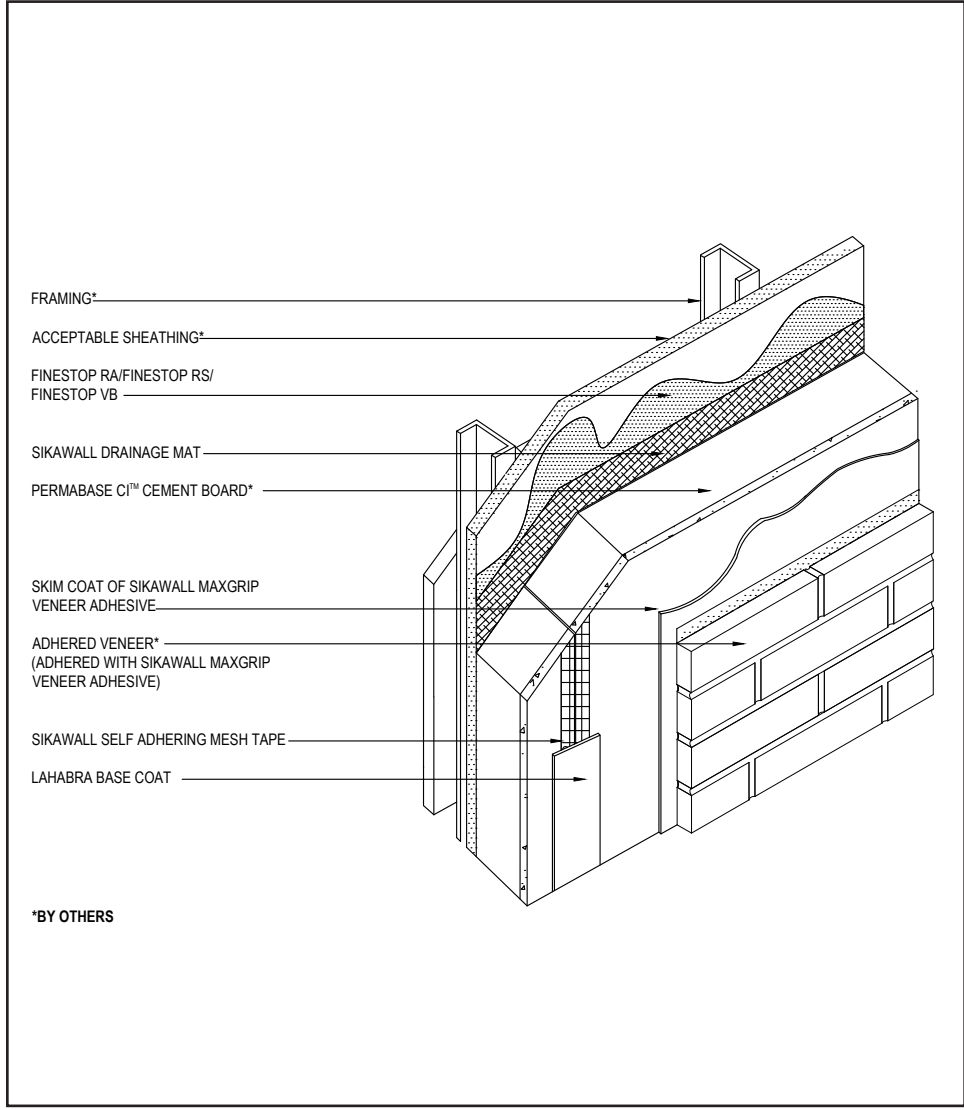
### Notes:

- **The details within are the latest recommendations and are represent in good faith by Sika Corporation US (hereinafter Sika). The details are subject to change without notice. Sika accepts no liability for the end use of the details. For conditions not shown, consult Sika for review of specific details.**
- **Install Sika materials in accordance with current installation instructions.**
- **Unsatisfactory conditions shall be reported to the General Contractor and corrected before the application of Sika products.**
- **Adhered veneer shall not exceed 15 lbs. (6.8 kg) per sq. ft.**

# Finescreen 1000 CI with MaxGrip Veneer Adhesive

## FINESCREEN 1000 CI WITH MAXGRIP VENEER ADHESIVE SYSTEM (ISOMETRIC)

• Adhered veneer shall not exceed 15 lbs. (6.8 kg) per sq. ft.



\*BY OTHERS

01 0524

(\*NOTE: BY OTHERS)

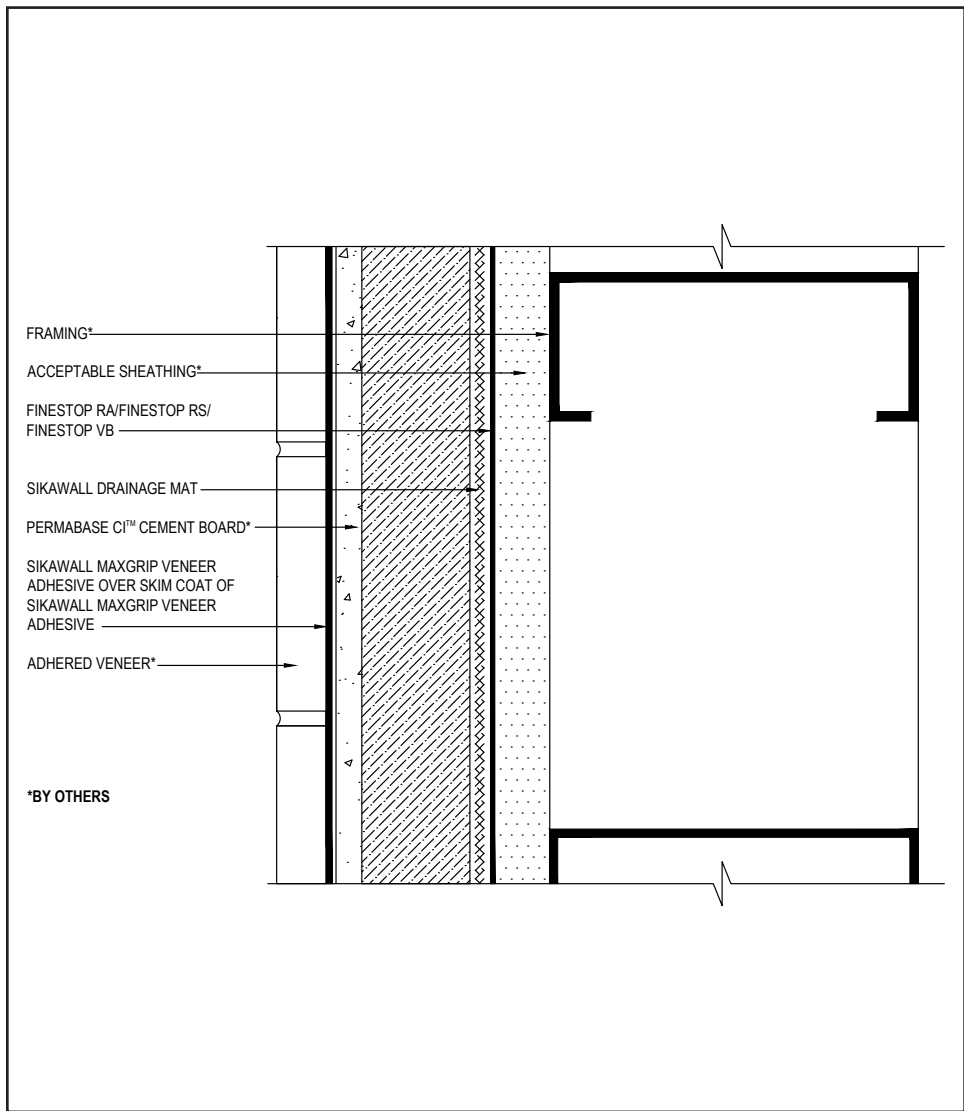
The details within are the latest recommendations and are represented in good faith by Sika Corporation US (hereinafter Sika). The details are subject to change without notice. Sika accepts no liability for the end use of the details. For conditions not shown, consult Sika for review of specific details.

- Install Sika materials in accordance with current installation instructions.
- Unsatisfactory conditions shall be reported to the General Contractor and corrected before the application of Sika products.



# Finescreen 1000 CI with MaxGrip Veneer Adhesive

## FINESCREEN 1000 CI WITH MAXGRIP VENEER ADHESIVE SYSTEM (PLAN VIEW)



• Adhered veneer shall not exceed 15 lbs. (6.8 kg) per sq. ft.

02 0524

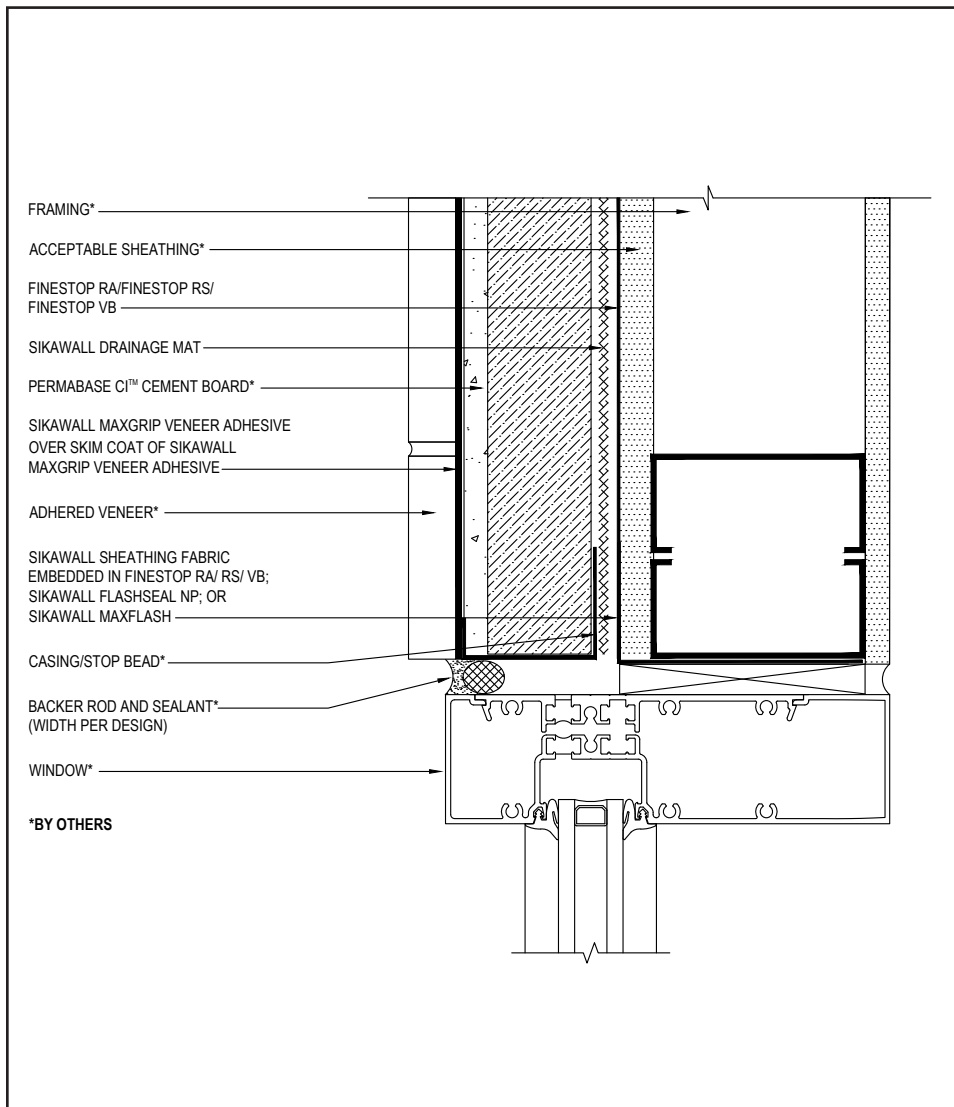
(\*NOTE: BY OTHERS)

The details within are the latest recommendations and are represented in good faith by Sika Corporation US (hereinafter Sika). The details are subject to change without notice. Sika accepts no liability for the end use of the details. For conditions not shown, consult Sika for review of specific details.

- Install Sika materials in accordance with current installation instructions.
- Unsatisfactory conditions shall be reported to the General Contractor and corrected before the application of Sika products.

# Finescreen 1000 CI with MaxGrip Veneer Adhesive

## WINDOW JAMB DETAIL WITH CASING BEAD (PLAN VIEW)



- Prior to window and SikaWall Drainage Mat installation, ensure water-resistive barrier is properly applied into the rough openings in accordance with LaHabra Finestop published typical details for further information.
- Reference *Acceptable Sealants for use with LaHabra Wall Systems* Technical Bulletin for a list of sealants.
- Consult window and sealant manufacturers to verify window installation, detailing and to ensure no water leakage into the wall assembly.

03 0524

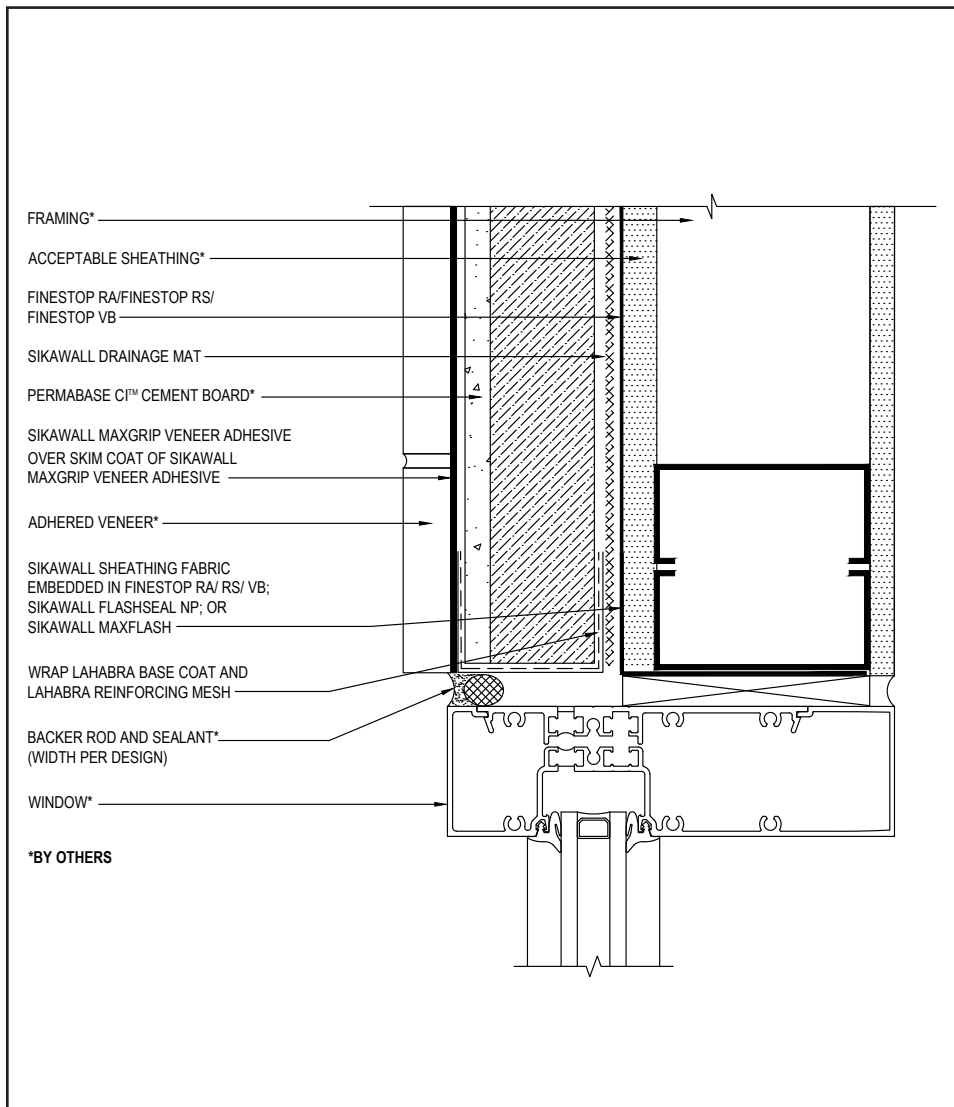
(\*NOTE: BY OTHERS)

The details within are the latest recommendations and are represented in good faith by Sika Corporation US (hereinafter Sika). The details are subject to change without notice. Sika accepts no liability for the end use of the details. For conditions not shown, consult Sika for review of specific details.

- Install Sika materials in accordance with current installation instructions.
- Unsatisfactory conditions shall be reported to the General Contractor and corrected before the application of Sika products.

# Finescreen 1000 CI with MaxGrip Veneer Adhesive

## WINDOW JAMB DETAIL WITH BACKWRAP (PLAN VIEW)



04 0524

(\*NOTE: BY OTHERS)

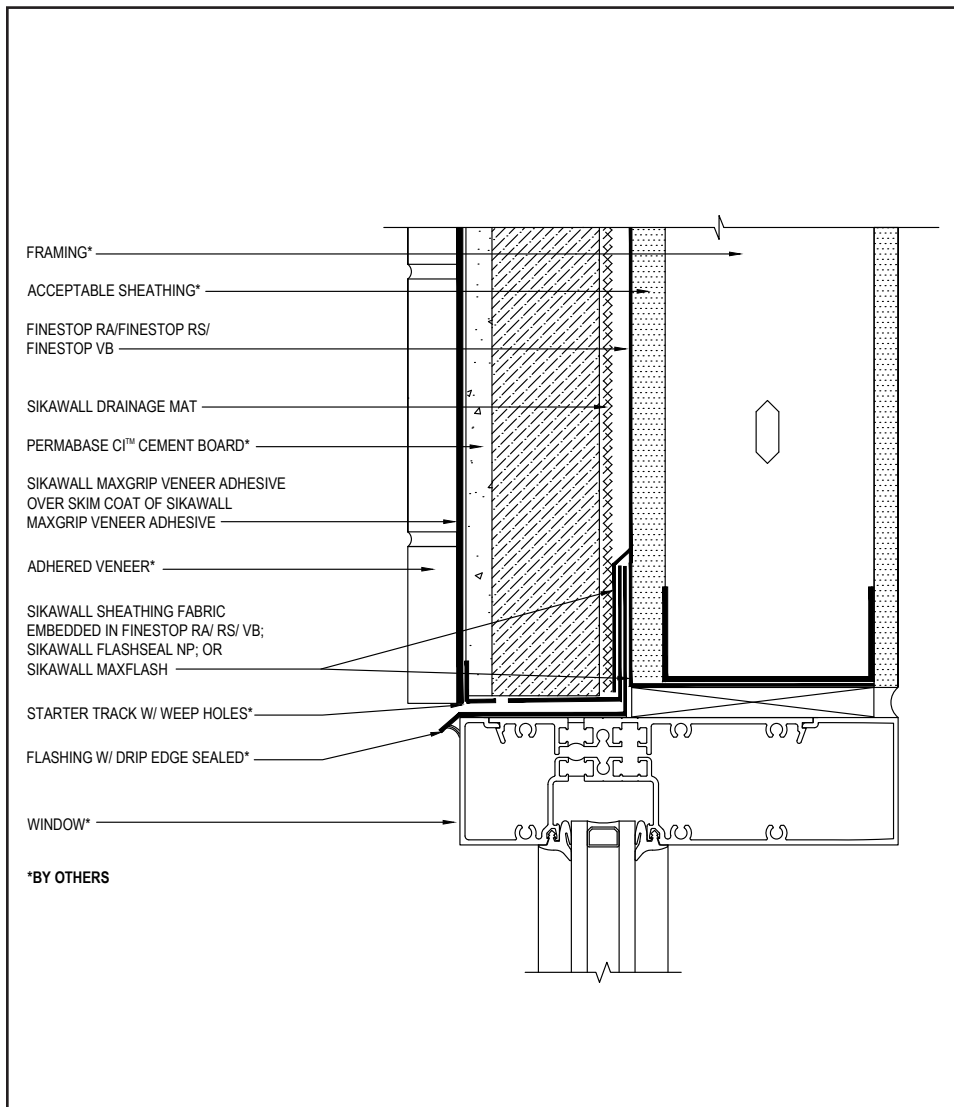
- Fully encapsulate system termination with mesh reinforced base coat. Extend reinforcing mesh a minimum of 2½" onto back of insulation board.
- Prior to window and SikaWall Drainage Mat installation, ensure water-resistive barrier is properly applied into the rough openings in accordance with LaHabra application guidelines and code requirements. Reference LaHabra Finestop published typical details for further information.
- Provide a back wrapped type joint with backer rod and sealant at system terminations to dissimilar materials, ensuring that a water tight seal is achieved (width per design).
- Reference *Acceptable Sealants for use with LaHabra Wall Systems* Technical Bulletin for a list of sealants.
- Consult window and sealant manufacturers to verify window installation, detailing and to ensure no water leakage into the wall assembly.

The details within are the latest recommendations and are represented in good faith by Sika Corporation US (hereinafter Sika). The details are subject to change without notice. Sika accepts no liability for the end use of the details. For conditions not shown, consult Sika for review of specific details.

- Install Sika materials in accordance with current installation instructions.
- Unsatisfactory conditions shall be reported to the General Contractor and corrected before the application of Sika products.

# Finescreen 1000 CI with MaxGrip Veneer Adhesive

## WINDOW HEAD DETAIL WITH STARTER TRACK



- Provide end-dams at flashing terminations.
- Ensure a means for drainage is provided at system termination at window head.
- Prior to window and SikaWall Drainage Mat installation, ensure water-resistive barrier is properly applied into the rough openings in accordance with LaHabra application guidelines and code requirements. Reference LaHabra Finestop published typical details.
- Ensure a starter track with weep holes is used.
- Consult window and sealant manufacturers to verify window installation, detailing and to ensure no water leakage into the wall assembly.

05 0524

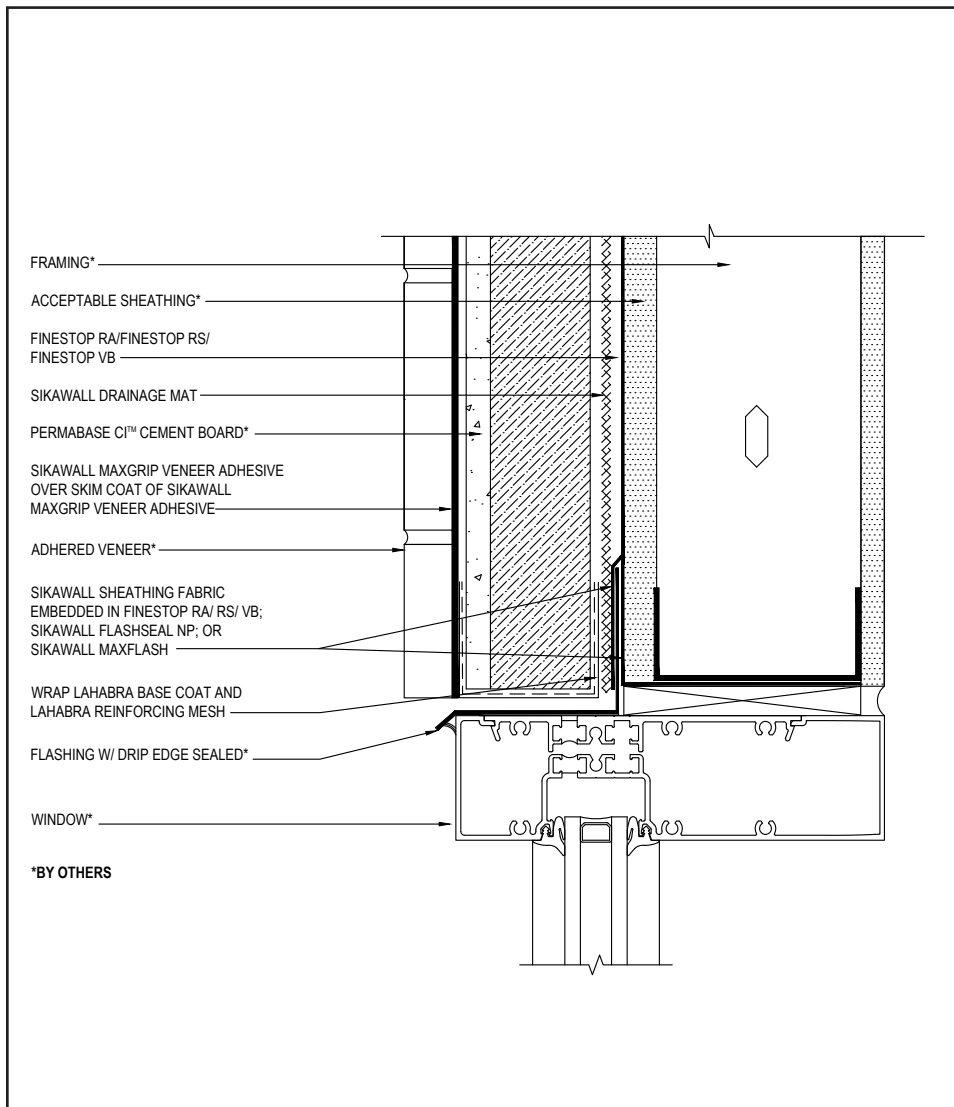
(\*NOTE: BY OTHERS)

The details within are the latest recommendations and are represented in good faith by Sika Corporation US (hereinafter Sika). The details are subject to change without notice. Sika accepts no liability for the end use of the details. For conditions not shown, consult Sika for review of specific details.

- Install Sika materials in accordance with current installation instructions.
- Unsatisfactory conditions shall be reported to the General Contractor and corrected before the application of Sika products.

# Finescreen 1000 CI with MaxGrip Veneer Adhesive

## WINDOW HEAD DETAIL WITH BACKWRAP



06 0524

(\*NOTE: BY OTHERS)

- Fully encapsulate system termination with mesh reinforced base coat. Extend reinforcing mesh a minimum of 2½" onto back of insulation board.
- Prior to window and SikaWall Drainage Mat installation, ensure water-resistive barrier is properly applied into the rough openings in accordance with LaHabra application guidelines and code requirements. Reference LaHabra Finestop published typical details for further information.
- Consult window and sealant manufacturers to verify window installation, detailing and to ensure no water leakage into the wall assembly.
- Provide end-dams at flashing terminations.
- Ensure a means for drainage is provided at system termination at window head.

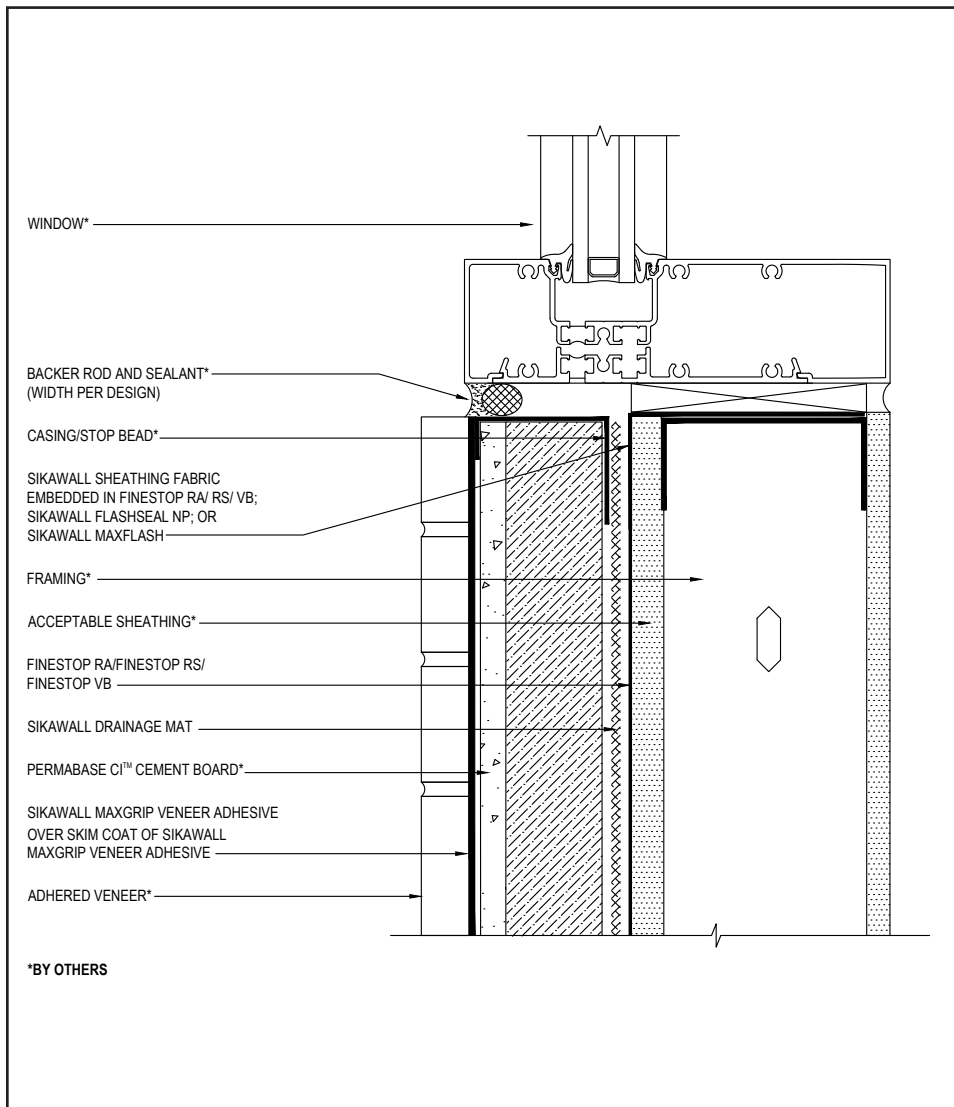
The details within are the latest recommendations and are represented in good faith by Sika Corporation US (hereinafter Sika). The details are subject to change without notice. Sika accepts no liability for the end use of the details. For conditions not shown, consult Sika for review of specific details.

- Install Sika materials in accordance with current installation instructions.
- Unsatisfactory conditions shall be reported to the General Contractor and corrected before the application of Sika products.



# Finescreen 1000 CI with MaxGrip Veneer Adhesive

## WINDOW SILL DETAIL WITH CASING BEAD



- Prior to window and SikaWall Drainage Mat installation, ensure water-resistive barrier is properly applied into the rough openings in accordance with LaHabra application guidelines and code requirements. Reference LaHabra Finestop published typical details for further information.
- Consult window and sealant manufacturers to verify window installation, detailing and to ensure no water leakage into the wall assembly.

07 0524

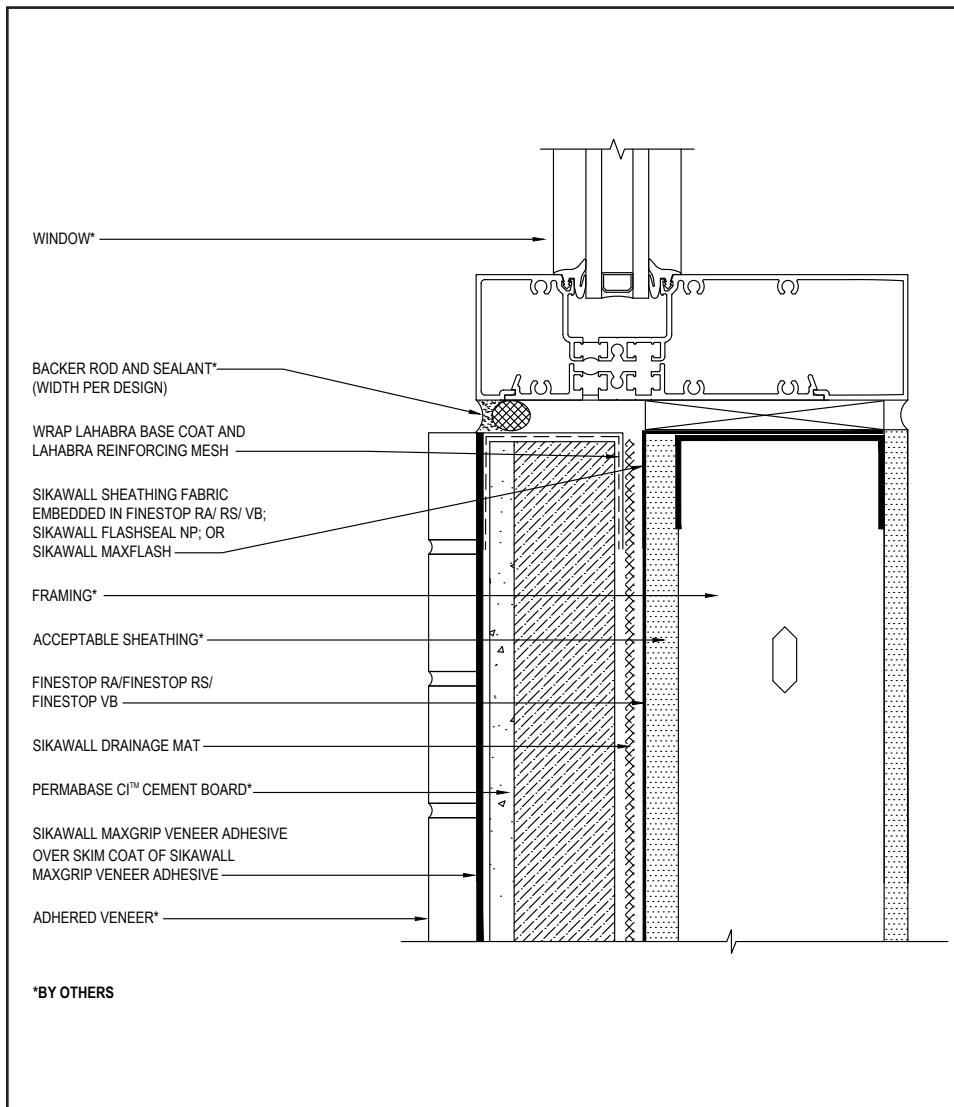
(\*NOTE: BY OTHERS)

The details within are the latest recommendations and are represented in good faith by Sika Corporation US (hereinafter Sika). The details are subject to change without notice. Sika accepts no liability for the end use of the details. For conditions not shown, consult Sika for review of specific details.

- Install Sika materials in accordance with current installation instructions.
- Unsatisfactory conditions shall be reported to the General Contractor and corrected before the application of Sika products.

# Finescreen 1000 CI with MaxGrip Veneer Adhesive

## WINDOW SILL DETAIL WITH BACKWRAP



- Fully encapsulate system termination with mesh reinforced base coat. Extend reinforcing mesh a minimum of 2½" onto back of insulation board.
- Prior to window and SikaWall Drainage Mat installation, ensure water-resistive barrier is properly applied into the rough openings in accordance with LaHabra application guidelines and code requirements. Reference LaHabra Finestop published typical details for further information.
- Consult window and sealant manufacturers to verify window installation, detailing and to ensure no water leakage into the wall assembly.

08 0524

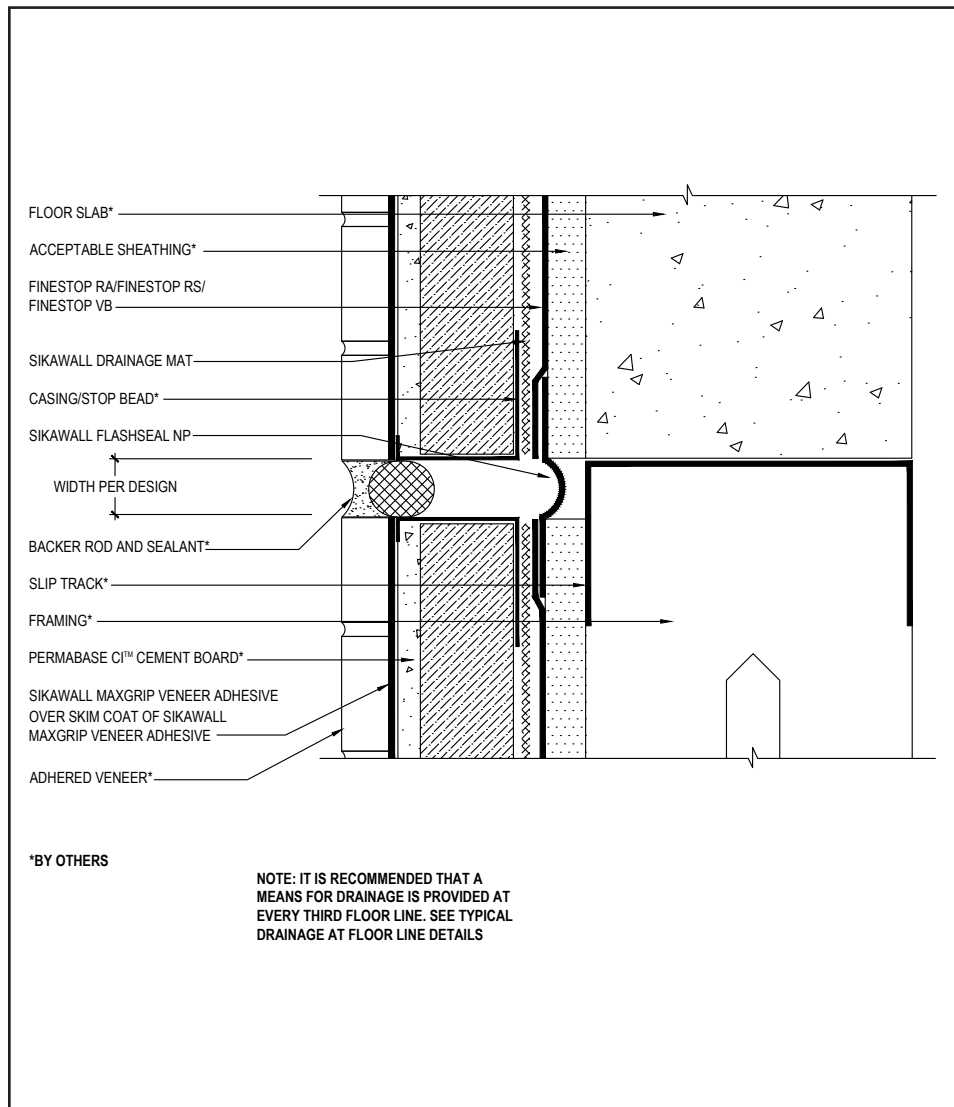
(\*NOTE: BY OTHERS)

The details within are the latest recommendations and are represented in good faith by Sika Corporation US (hereinafter Sika). The details are subject to change without notice. Sika accepts no liability for the end use of the details. For conditions not shown, consult Sika for review of specific details.

- Install Sika materials in accordance with current installation instructions.
- Unsatisfactory conditions shall be reported to the General Contractor and corrected before the application of Sika products.

# Finescreen 1000 CI with MaxGrip Veneer Adhesive

## EXPANSION JOINT AT FLOOR LINE WITH CASING BEAD



- Provide sufficient slack in the SikaWall Flash Seal NP at expansion joint to allow for movement.
- Typical locations for system expansion joints are at building expansion joints, at prefabricated panel joints, floor lines of wood frame construction or where slip tracks are used in steel frame construction, where substrates change and where structural movement is anticipated. It is the sole responsibility of the project design team, including the architect, engineer, etc., to ultimately determine specific expansion joint placement, width and design. Detail specific locations in construction drawings.
- It is recommended that a means for drainage is provided at every third floor. (See typical drainage at floorline detail).
- Ensure drainage plane is continuous and unobstructed at expansion joint.
- Reference *Acceptable Sealants for use with LaHabra Wall Systems* Technical Bulletin for a list of sealants.

09 0524

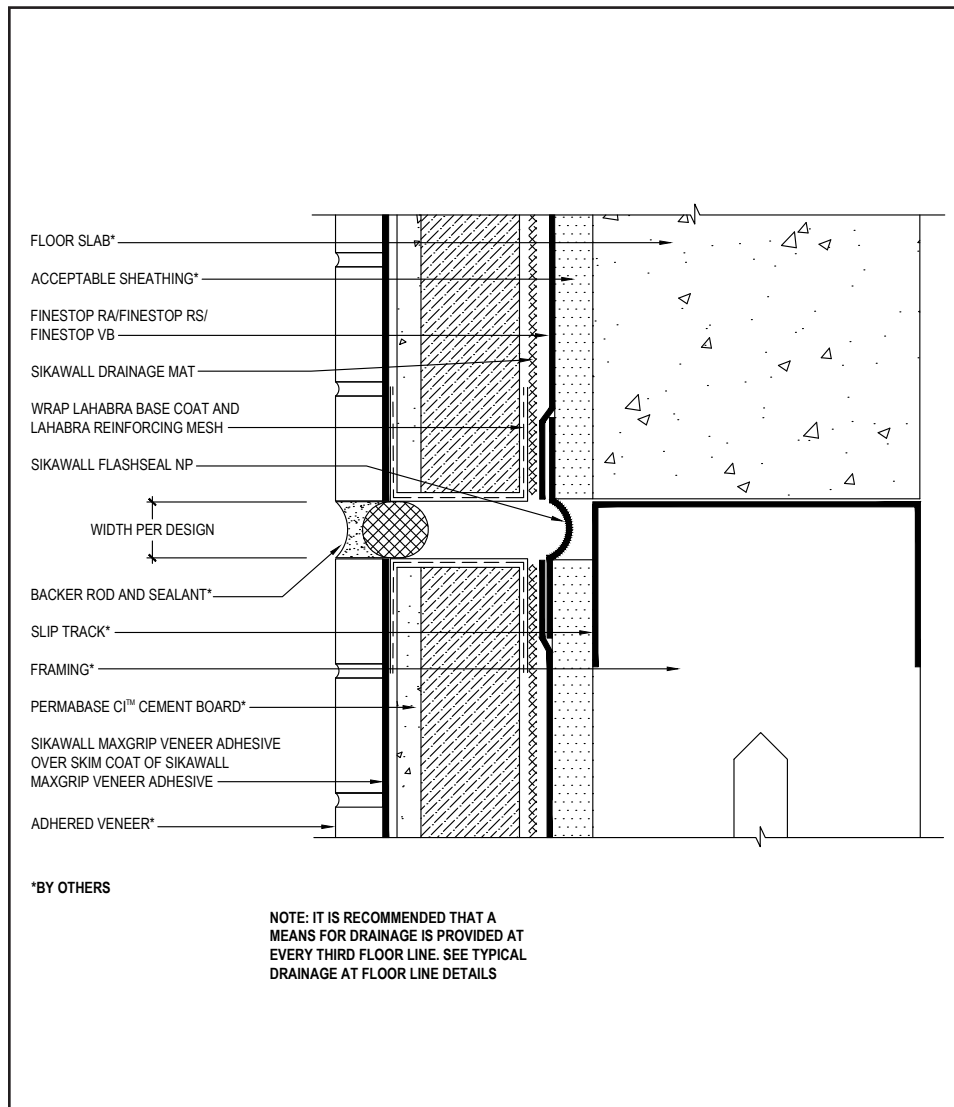
(\*NOTE: BY OTHERS)

The details within are the latest recommendations and are represented in good faith by Sika Corporation US (hereinafter Sika). The details are subject to change without notice. Sika accepts no liability for the end use of the details. For conditions not shown, consult Sika for review of specific details.

- Install Sika materials in accordance with current installation instructions.
- Unsatisfactory conditions shall be reported to the General Contractor and corrected before the application of Sika products.

# Finescreen 1000 CI with MaxGrip Veneer Adhesive

## EXPANSION JOINT AT FLOOR LINE WITH BACKWRAP



- Fully encapsulate system termination with mesh reinforced base coat. Extend reinforcing mesh a minimum of 2½" onto back of insulation board.
- Provide sufficient slack in the SikaWall Flash Seal NP at expansion joint to allow for movement.
- Typical locations for system expansion joints are at building expansion joints, at prefabricated panel joints, floor lines of wood frame construction or where slip tracks are used in steel frame construction, where substrates change and where structural movement is anticipated. It is the sole responsibility of the project design team, including the architect, engineer, etc., to ultimately determine specific expansion joint placement, width and design. Detail specific locations in construction drawings.
- It is recommended that a means for drainage is provided at every third floor. (See typical drainage at floorline detail).
- Ensure drainage plane is continuous and unobstructed at expansion joint.
- Reference *Acceptable Sealants for use with LaHabra Wall Systems* Technical Bulletin for a list of sealants.

10 0524

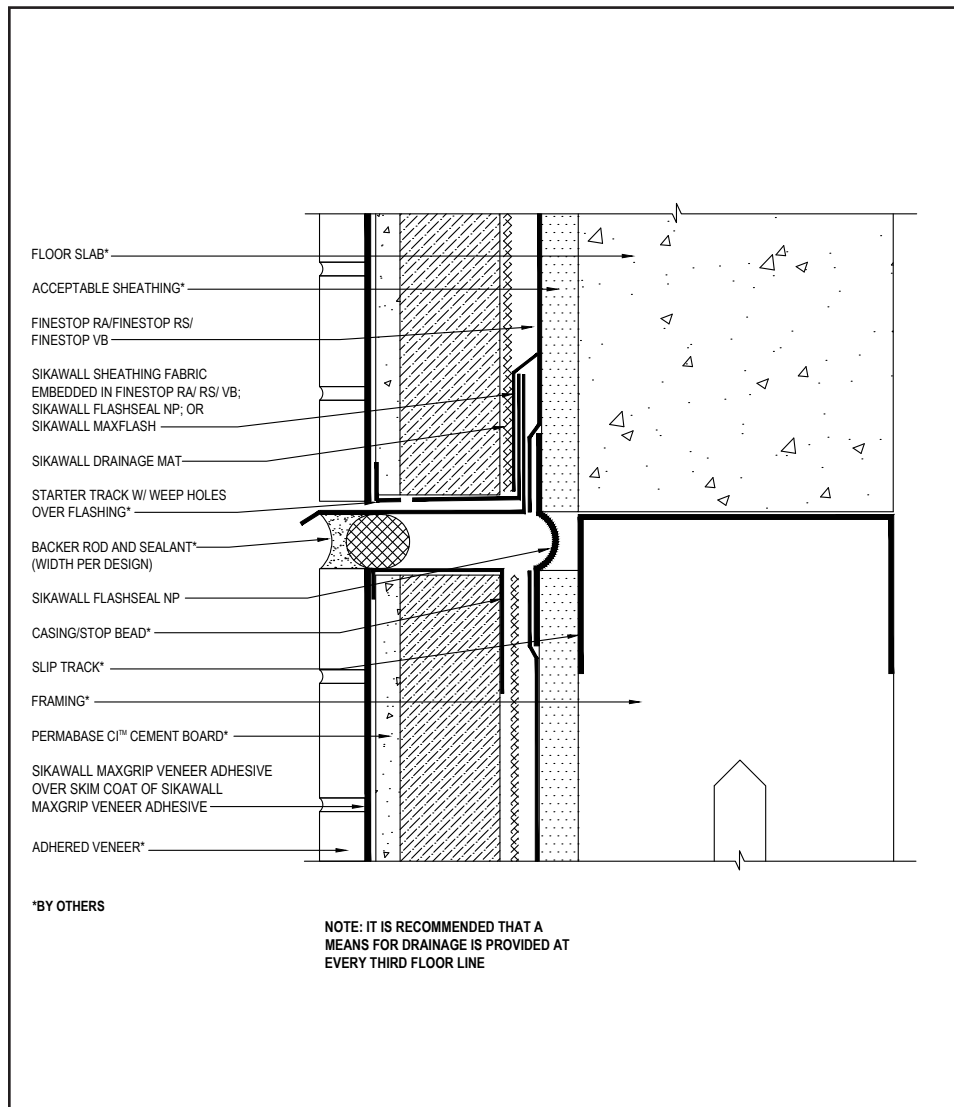
(\*NOTE: BY OTHERS)

The details within are the latest recommendations and are represented in good faith by Sika Corporation US (hereinafter Sika). The details are subject to change without notice. Sika accepts no liability for the end use of the details. For conditions not shown, consult Sika for review of specific details.

- Install Sika materials in accordance with current installation instructions.
- Unsatisfactory conditions shall be reported to the General Contractor and corrected before the application of Sika products.

# Finescreen 1000 CI with MaxGrip Veneer Adhesive

## DRAINAGE AT FLOOR LINE WITH STARTER TRACK AND CASING BEAD



- Ensure a starter track with weep holes is used.
- Provide sufficient slack in the SikaWall Flash Seal NP at expansion joint to allow for movement.
- Typical locations for system expansion joints are at building expansion joints, at prefabricated panel joints, floor lines of wood frame construction or where slip tracks are used in steel frame construction, where substrates change and where structural movement is anticipated. It is the sole responsibility of the project design team, including the architect, engineer, etc., to ultimately determine specific expansion joint placement, width and design. Detail specific locations in construction drawings.
- It is recommended that a means for drainage is provided at every third floor. (See typical drainage at floorline detail).
- Ensure drainage plane is continuous and unobstructed at expansion joint.
- Reference *Acceptable Sealants for use with LaHabra Wall Systems* Technical Bulletin for a list of sealants.

11 0524

(\*NOTE: BY OTHERS)

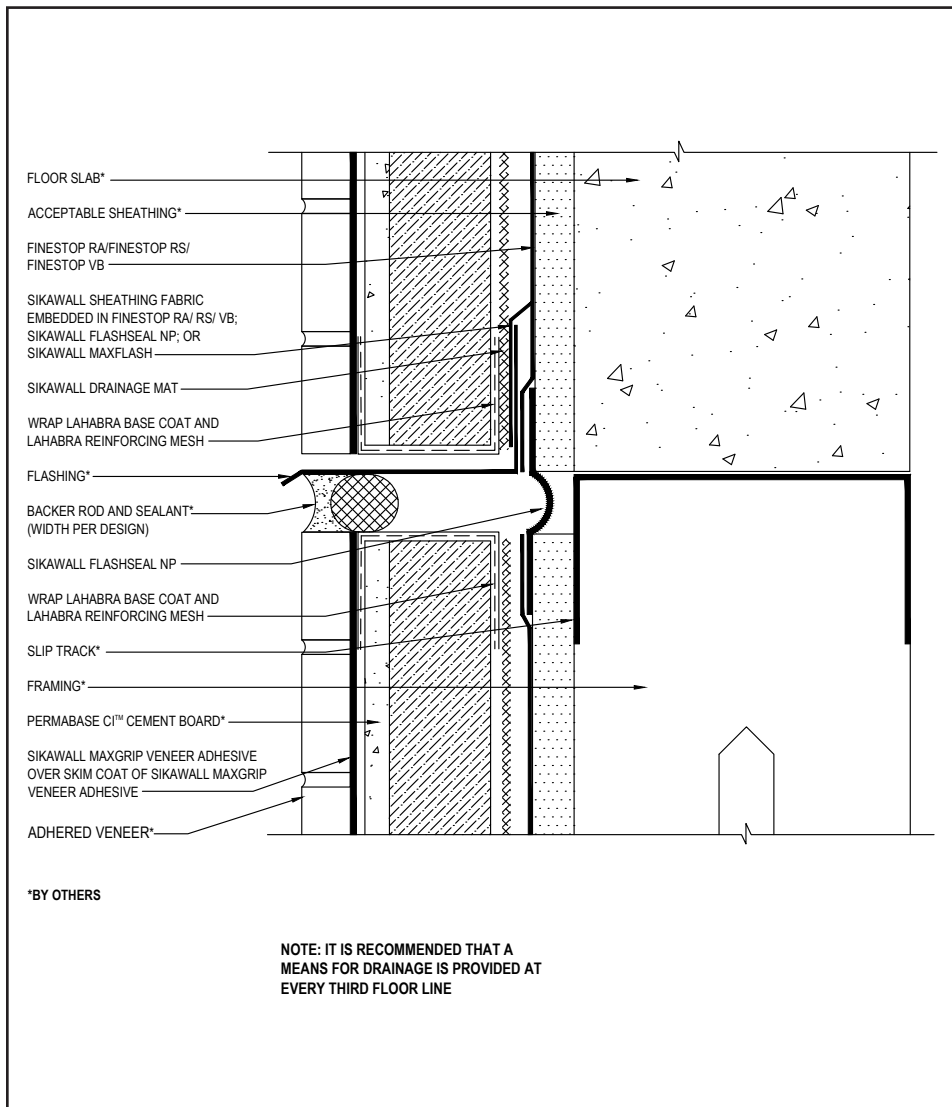
The details within are the latest recommendations and are represented in good faith by Sika Corporation US (hereinafter Sika). The details are subject to change without notice. Sika accepts no liability for the end use of the details. For conditions not shown, consult Sika for review of specific details.

- Install Sika materials in accordance with current installation instructions.
- Unsatisfactory conditions shall be reported to the General Contractor and corrected before the application of Sika products.



# Finescreen 1000 CI with MaxGrip Veneer Adhesive

## DRAINAGE AT FLOOR LINE WITH BACKWRAP



- Fully encapsulate system termination with mesh reinforced base coat. Extend reinforcing mesh a minimum of 2½" onto back of insulation board.
- Provide sufficient slack in the SikaWall Flash Seal NP at expansion joint to allow for movement.
- Typical locations for system expansion joints are at building expansion joints, at prefabricated panel joints, floor lines of wood frame construction or where slip tracks are used in steel frame construction, where substrates change and where structural movement is anticipated. It is the sole responsibility of the project design team, including the architect, engineer, etc., to ultimately determine specific expansion joint placement, width and design. Detail specific locations in construction drawings.
- It is recommended that a means for drainage is provided at every third floor. (See typical drainage at floorline detail).
- Ensure drainage plane is continuous and unobstructed at expansion joint.
- Reference *Acceptable Sealants for use with LaHabra Wall Systems* Technical Bulletin for a list of sealants.

12 0524

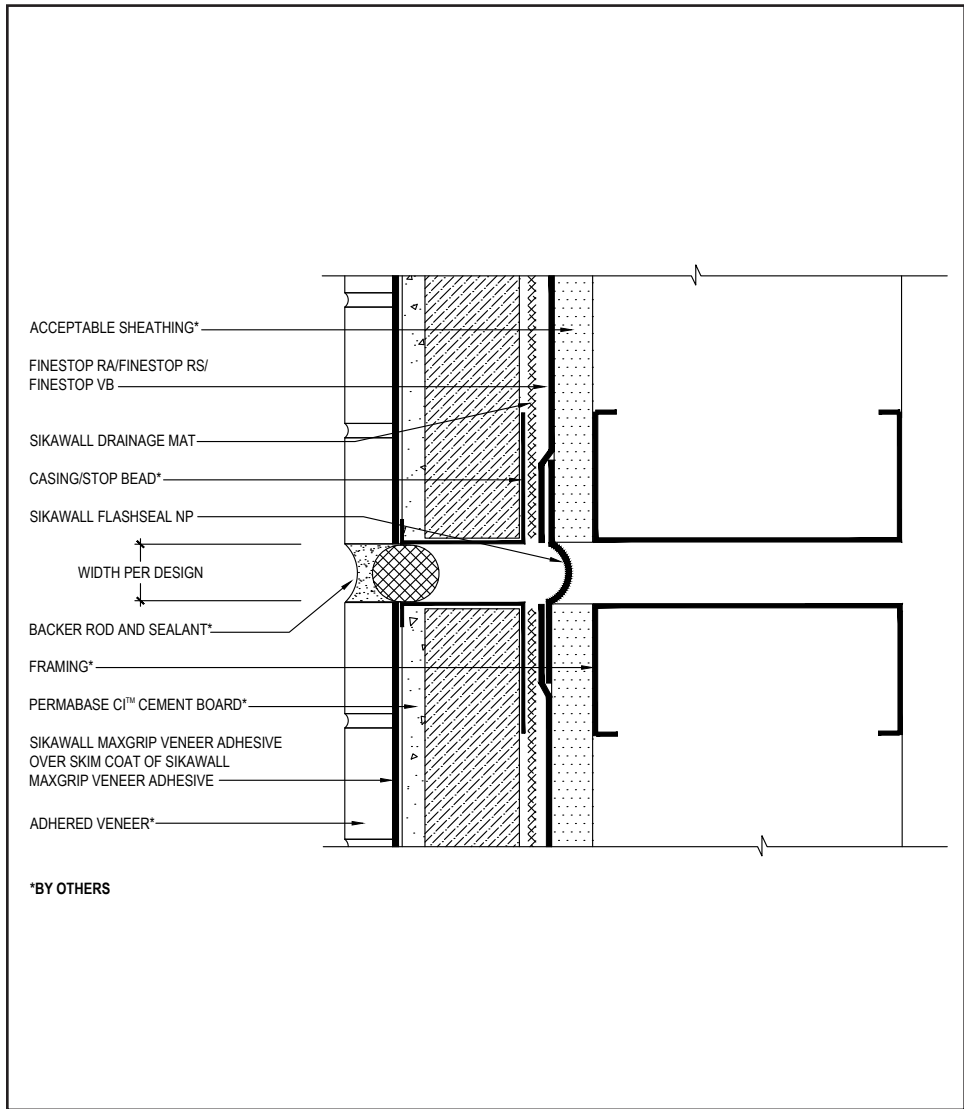
(\*NOTE: BY OTHERS)

The details within are the latest recommendations and are represented in good faith by Sika Corporation US (hereinafter Sika). The details are subject to change without notice. Sika accepts no liability for the end use of the details. For conditions not shown, consult Sika for review of specific details.

- Install Sika materials in accordance with current installation instructions.
- Unsatisfactory conditions shall be reported to the General Contractor and corrected before the application of Sika products.

# Finescreen 1000 CI with MaxGrip Veneer Adhesive

## VERTICAL EXPANSION JOINT WITH CASING BEAD (PLAN VIEW)



- Provide sufficient slack in the SikaWall Flash Seal NP at expansion joint to allow for movement.
- Typical locations for system expansion joints are at building expansion joints, at prefabricated panel joints, floor lines of wood frame construction or where slip tracks are used in steel frame construction, where substrates change and where structural movement is anticipated. It is the sole responsibility of the project design team, including the architect, engineer, etc., to ultimately determine specific expansion joint placement, width and design. Detail specific locations in construction drawings.
- It is recommended that a means for drainage is provided at every third floor. (See typical drainage at floorline detail).
- Ensure drainage plane is continuous and unobstructed at expansion joint.
- Reference *Acceptable Sealants for use with LaHabra Wall Systems* Technical Bulletin for a list of sealants.

13 0524

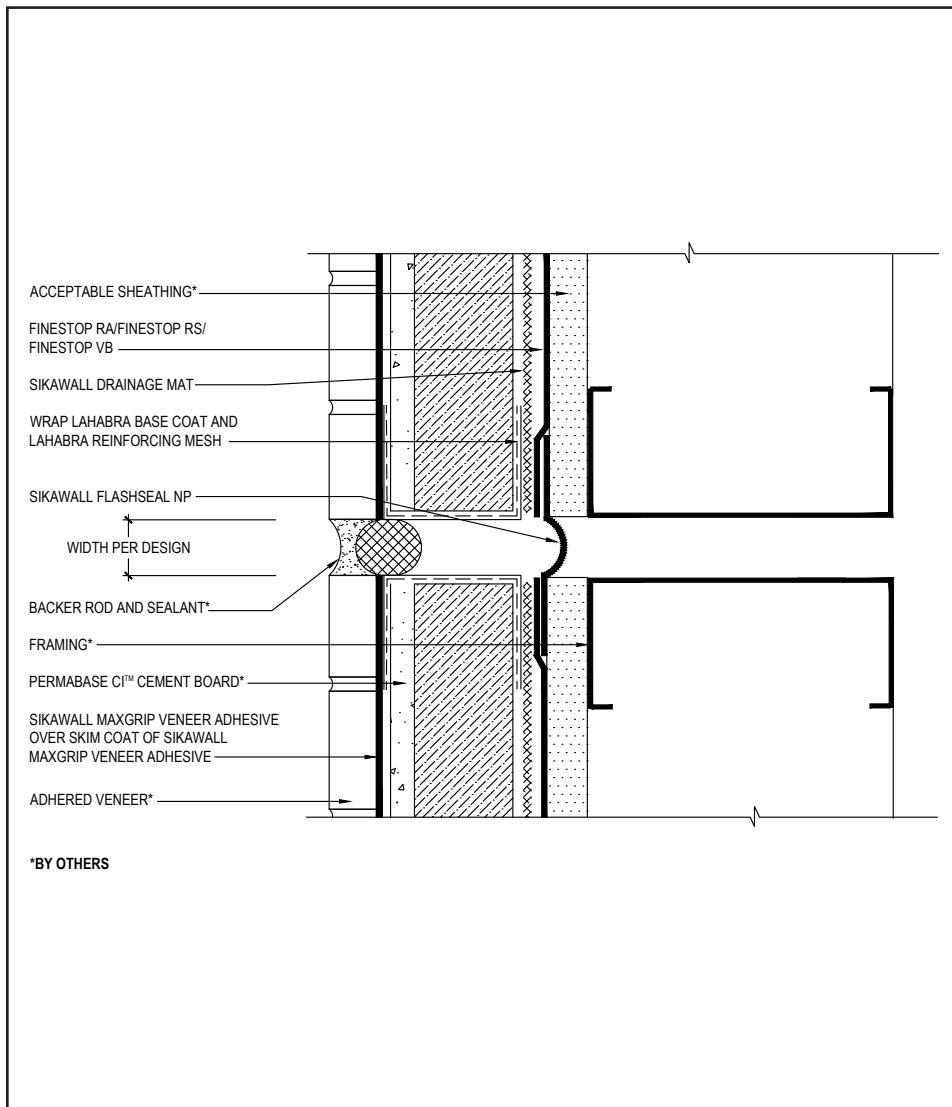
(\*NOTE: BY OTHERS)

The details within are the latest recommendations and are represented in good faith by Sika Corporation US (hereinafter Sika). The details are subject to change without notice. Sika accepts no liability for the end use of the details. For conditions not shown, consult Sika for review of specific details.

- Install Sika materials in accordance with current installation instructions.
- Unsatisfactory conditions shall be reported to the General Contractor and corrected before the application of Sika products.

# Finescreen 1000 CI with MaxGrip Veneer Adhesive

## VERTICAL EXPANSION JOINT WITH BACKWRAP (PLAN VIEW)



- Fully encapsulate system termination with mesh reinforced base coat. Extend reinforcing mesh a minimum of 2½" onto back of insulation board.
- Provide sufficient slack in the SikaWall Flash Seal NP at expansion joint to allow for movement.
- Typical locations for system expansion joints are at building expansion joints, at prefabricated panel joints, floor lines of wood frame construction or where slip tracks are used in steel frame construction, where substrates change and where structural movement is anticipated. It is the sole responsibility of the project design team, including the architect, engineer, etc., to ultimately determine specific expansion joint placement, width and design. Detail specific locations in construction drawings.
- It is recommended that a means for drainage is provided at every third floor. (See typical drainage at floorline detail).
- Ensure drainage plane is continuous and unobstructed at expansion joint.
- Reference *Acceptable Sealants for use with LaHabra Wall Systems* Technical Bulletin for a list of sealants.

14 0524

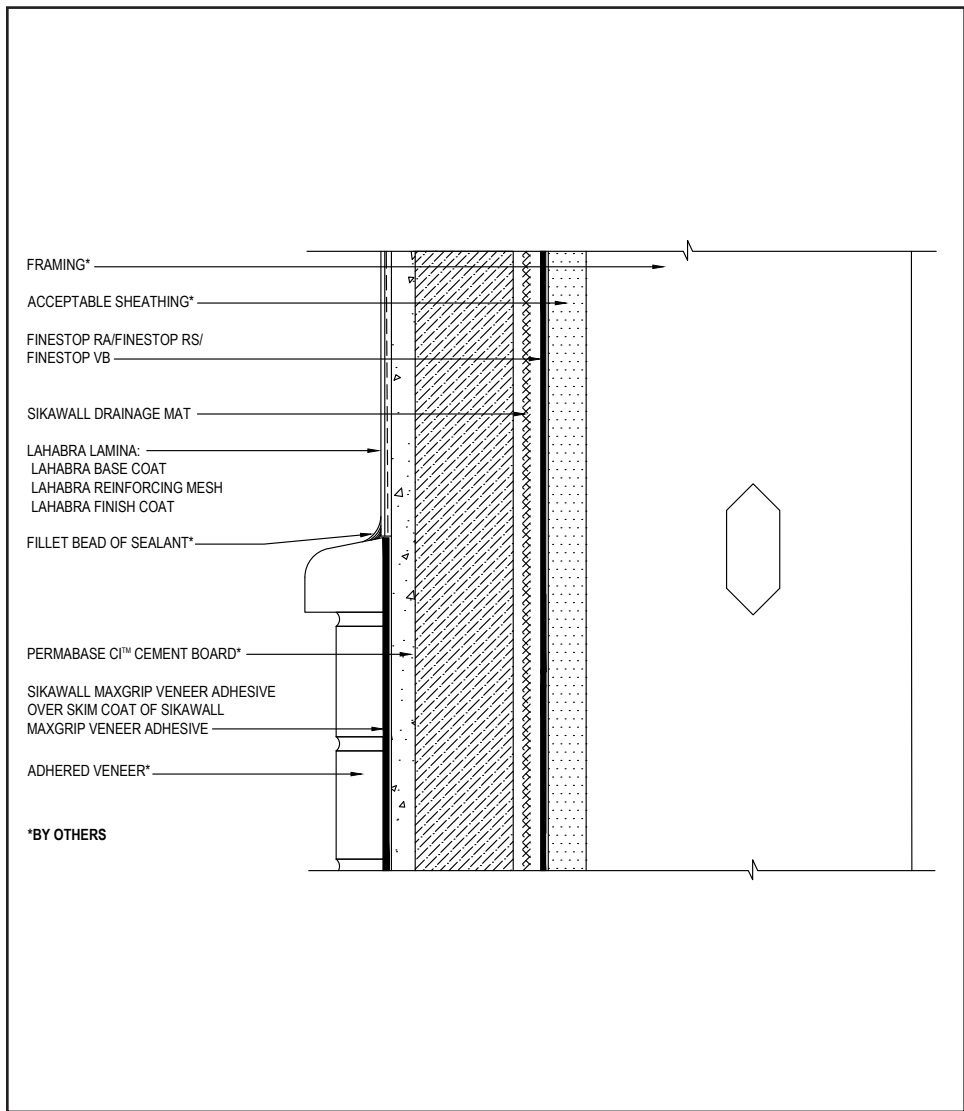
(\*NOTE: BY OTHERS)

The details within are the latest recommendations and are represented in good faith by Sika Corporation US (hereinafter Sika). The details are subject to change without notice. Sika accepts no liability for the end use of the details. For conditions not shown, consult Sika for review of specific details.

- Install Sika materials in accordance with current installation instructions.
- Unsatisfactory conditions shall be reported to the General Contractor and corrected before the application of Sika products.

# Finescreen 1000 CI with MaxGrip Veneer Adhesive

## ACRYLIC FINISH TO ADHERED VENEER TRANSITION



- Ensure all penetrations into the system are properly sealed.
- Provide continuous air seal around perimeter of penetration prior to SikaWall Drainage Mat application.

15 0524

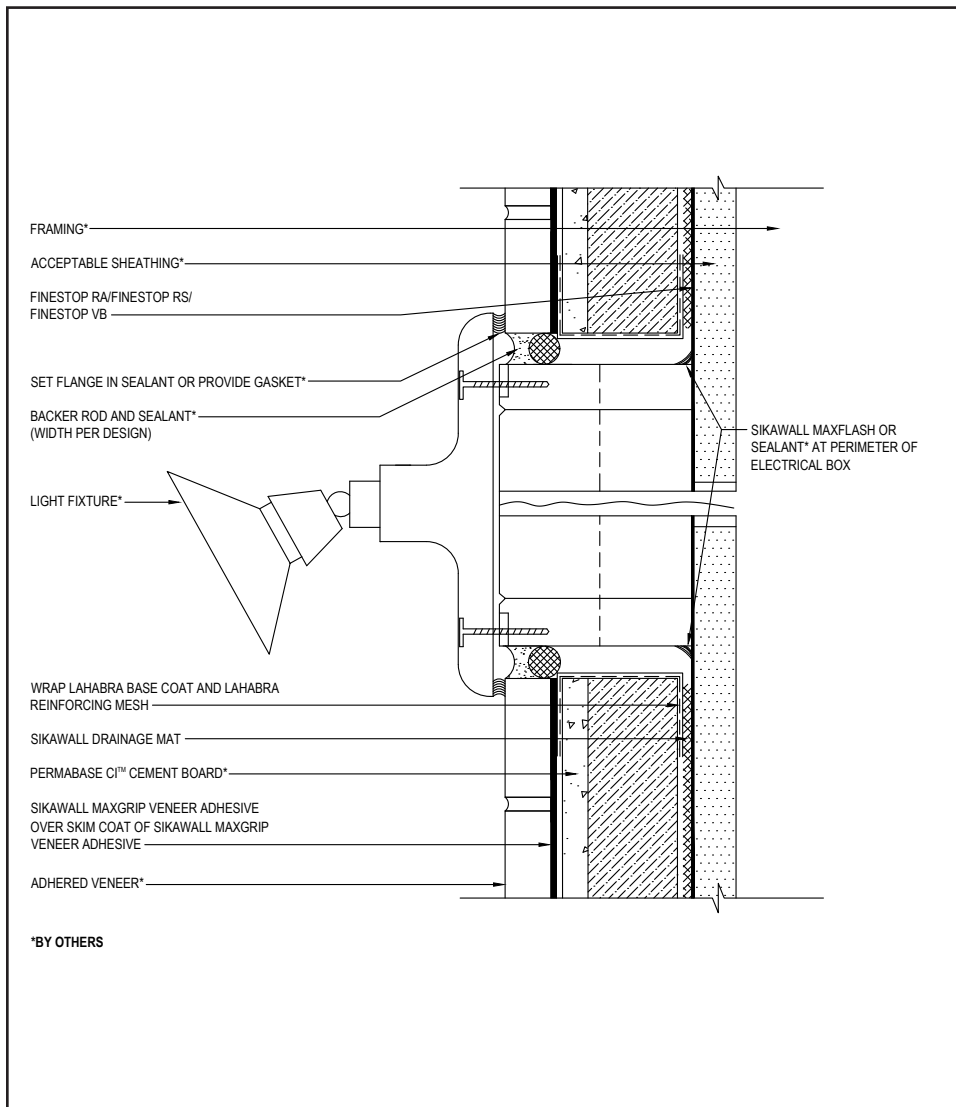
(\*NOTE: BY OTHERS)

The details within are the latest recommendations and are represented in good faith by Sika Corporation US (hereinafter Sika). The details are subject to change without notice. Sika accepts no liability for the end use of the details. For conditions not shown, consult Sika for review of specific details.

- Install Sika materials in accordance with current installation instructions.
- Unsatisfactory conditions shall be reported to the General Contractor and corrected before the application of Sika products.

# Finescreen 1000 CI with MaxGrip Veneer Adhesive

## LIGHT FIXTURE



- Fully encapsulate system termination with mesh reinforced base coat. Extend reinforcing mesh a minimum of 2½" onto back of insulation board.
- Ensure all penetrations into the system are properly sealed.
- Provide continuous air seal around perimeter of penetration prior to SikaWall Drainage Mat application.
- Reference *Acceptable Sealants for use with Finestop RA/RS/VB* Technical Bulletin for a list of sealants.

16 0524

(\*NOTE: BY OTHERS)

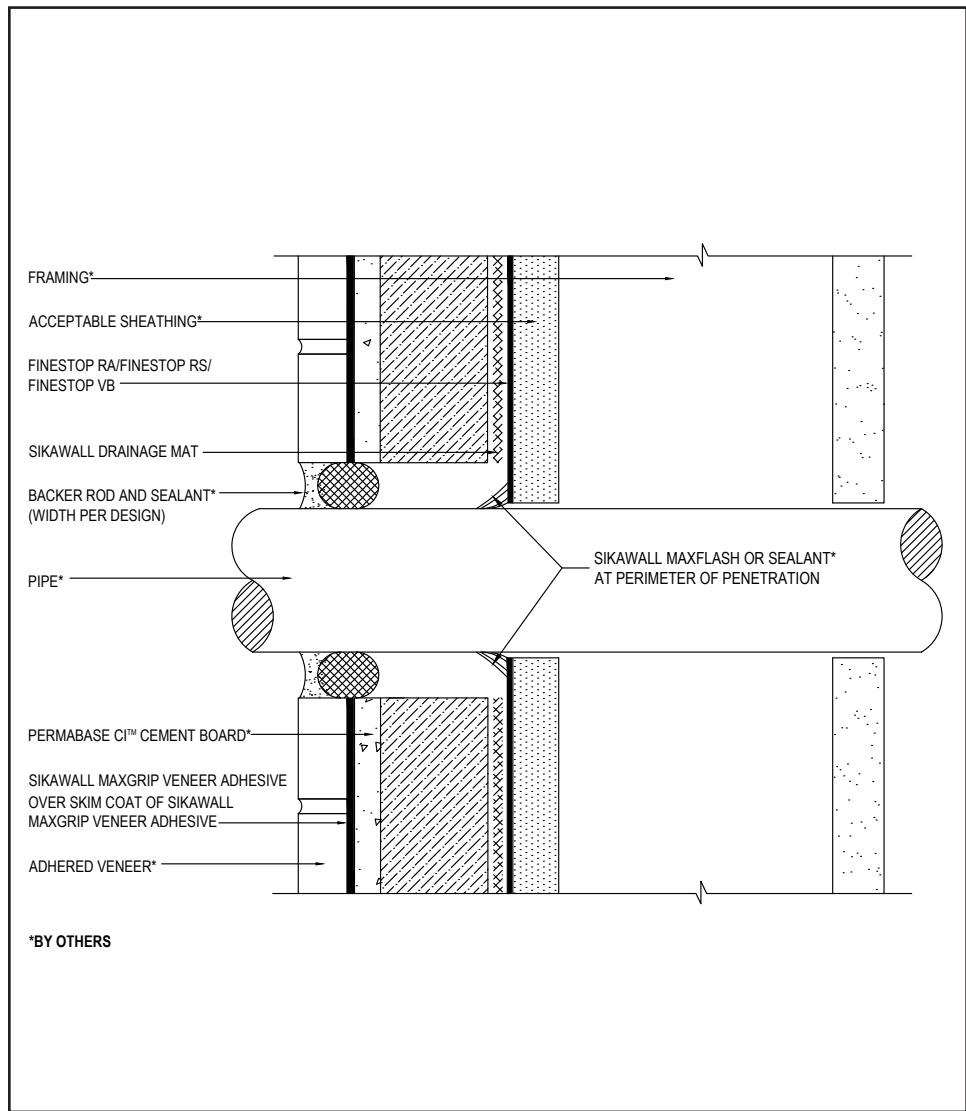
The details within are the latest recommendations and are represented in good faith by Sika Corporation US (hereinafter Sika). The details are subject to change without notice. Sika accepts no liability for the end use of the details. For conditions not shown, consult Sika for review of specific details.

- Install Sika materials in accordance with current installation instructions.
- Unsatisfactory conditions shall be reported to the General Contractor and corrected before the application of Sika products.



# Finescreen 1000 CI with MaxGrip Veneer Adhesive

## PIPE PENETRATION



- Ensure all penetrations into the system are properly sealed.
- Provide continuous air seal around perimeter of penetration prior to SikaWall Drainage Mat application.

17 0524

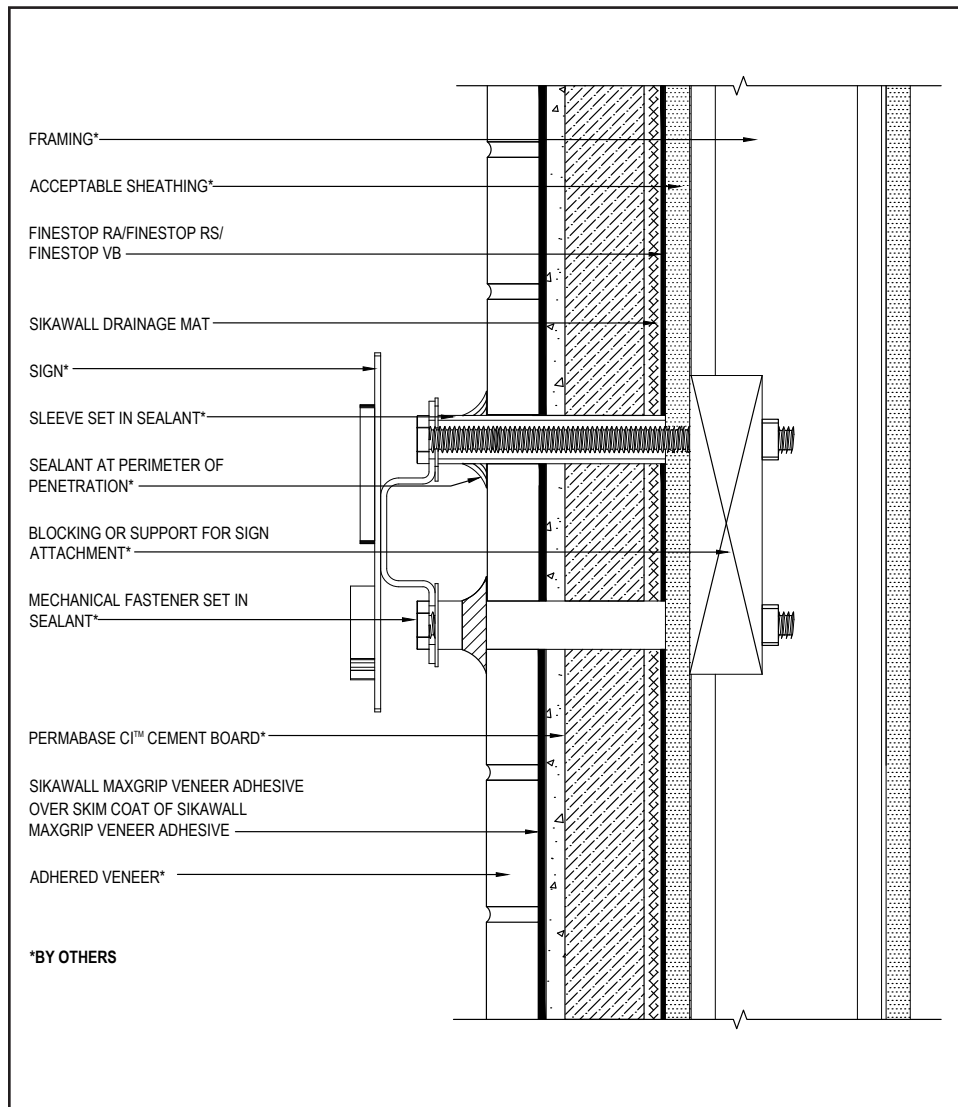
(\*NOTE: BY OTHERS)

The details within are the latest recommendations and are represented in good faith by Sika Corporation US (hereinafter Sika). The details are subject to change without notice. Sika accepts no liability for the end use of the details. For conditions not shown, consult Sika for review of specific details.

- Install Sika materials in accordance with current installation instructions.
- Unsatisfactory conditions shall be reported to the General Contractor and corrected before the application of Sika products.

# Finescreen 1000 CI with MaxGrip Veneer Adhesive

## SIGN ATTACHMENT



- Ensure all fastener penetrations through the system are properly sealed.

18 0524

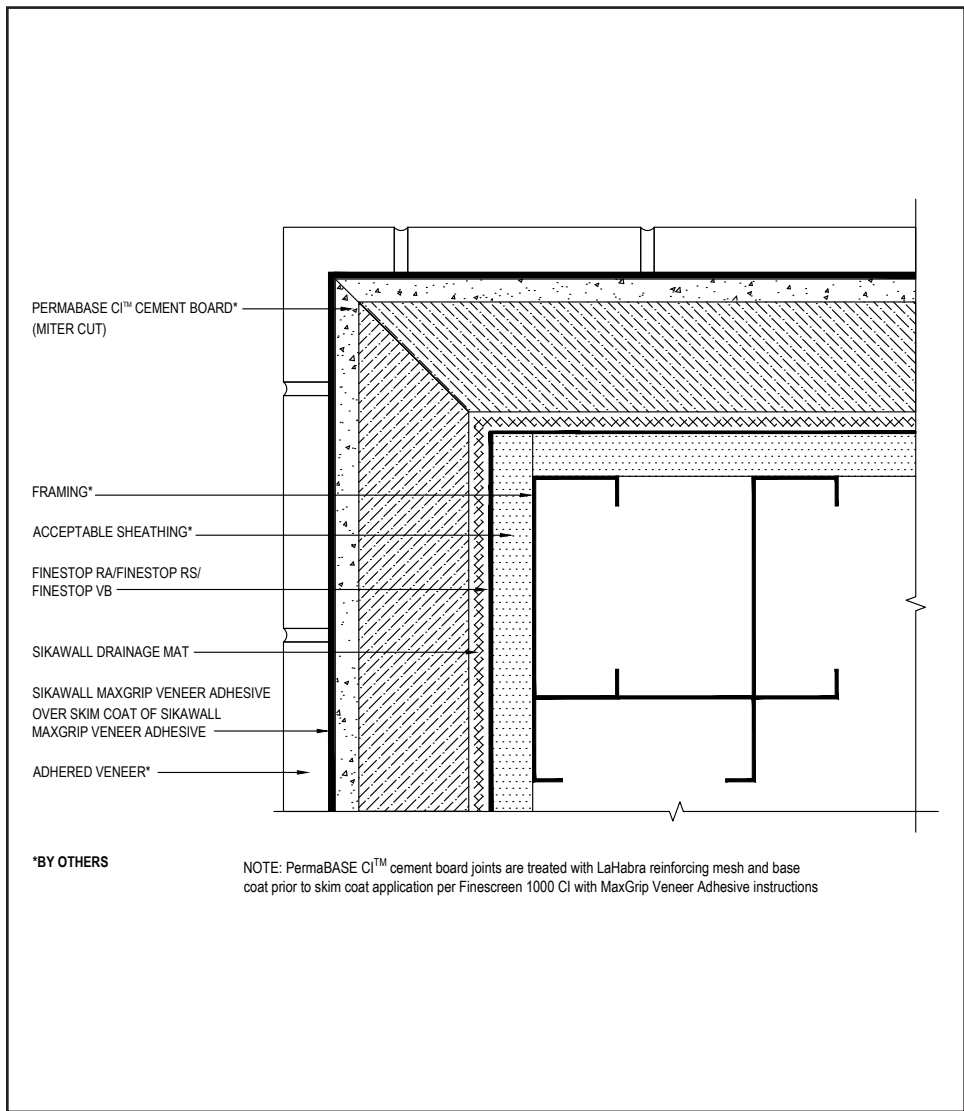
(\*NOTE: BY OTHERS)

The details within are the latest recommendations and are represented in good faith by Sika Corporation US (hereinafter Sika). The details are subject to change without notice. Sika accepts no liability for the end use of the details. For conditions not shown, consult Sika for review of specific details.

- Install Sika materials in accordance with current installation instructions.
- Unsatisfactory conditions shall be reported to the General Contractor and corrected before the application of Sika products.

# Finescreen 1000 CI with MaxGrip Veneer Adhesive

## OUTSIDE CORNER MITER DETAIL (PLAN VIEW)



- PermaBase CI cement board joints must be treated with LaHabra reinforcing mesh and base coat prior to skim coat application of MaxGrip Veneer Adhesive.

19 0524

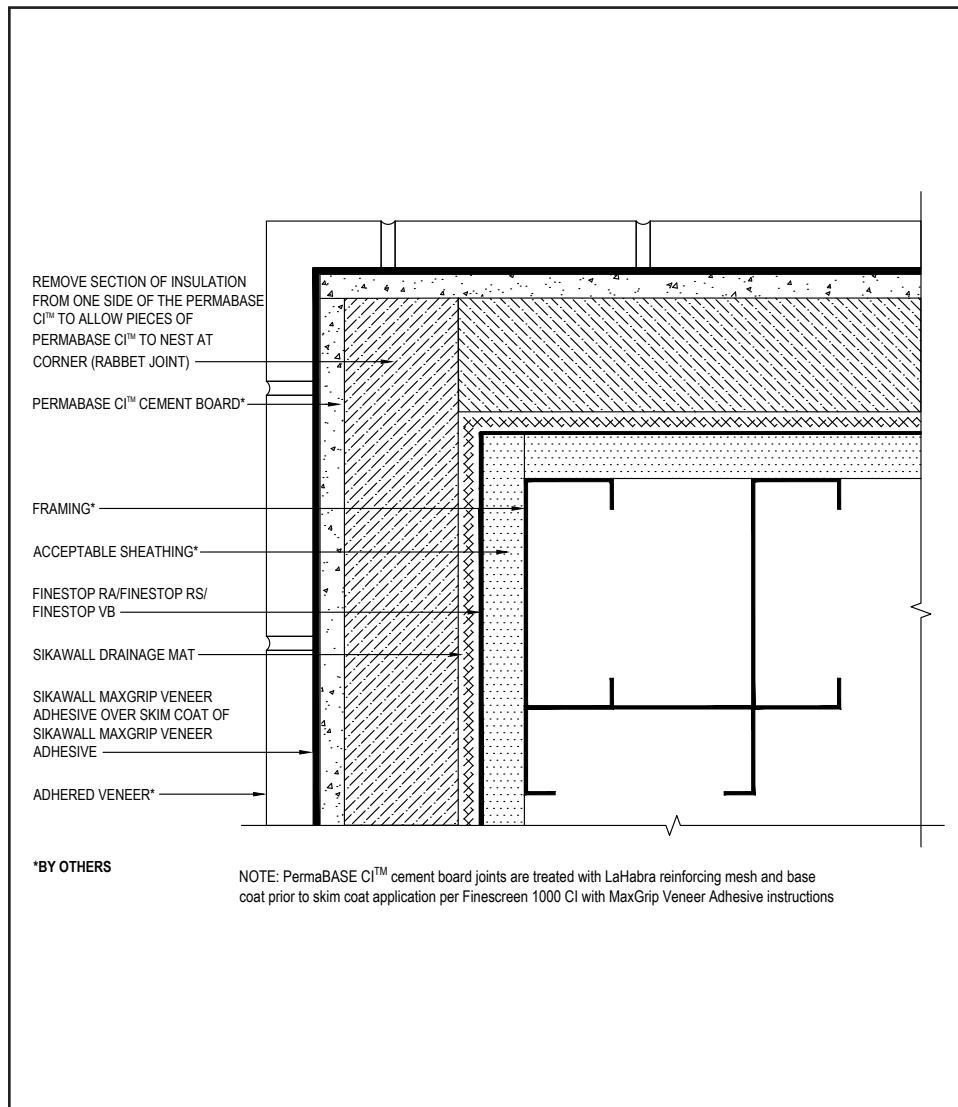
(\*NOTE: BY OTHERS)

The details within are the latest recommendations and are represented in good faith by Sika Corporation US (hereinafter Sika). The details are subject to change without notice. Sika accepts no liability for the end use of the details. For conditions not shown, consult Sika for review of specific details.

- Install Sika materials in accordance with current installation instructions.
- Unsatisfactory conditions shall be reported to the General Contractor and corrected before the application of Sika products.

# Finescreen 1000 CI with MaxGrip Veneer Adhesive

## OUTSIDE CORNER DETAIL RABBET JOINT (PLAN VIEW)



- PermaBase CI cement board joints must be treated with LaHabra reinforcing mesh and base coat prior to skim coat application of MaxGrip Veneer Adhesive.

20 0524

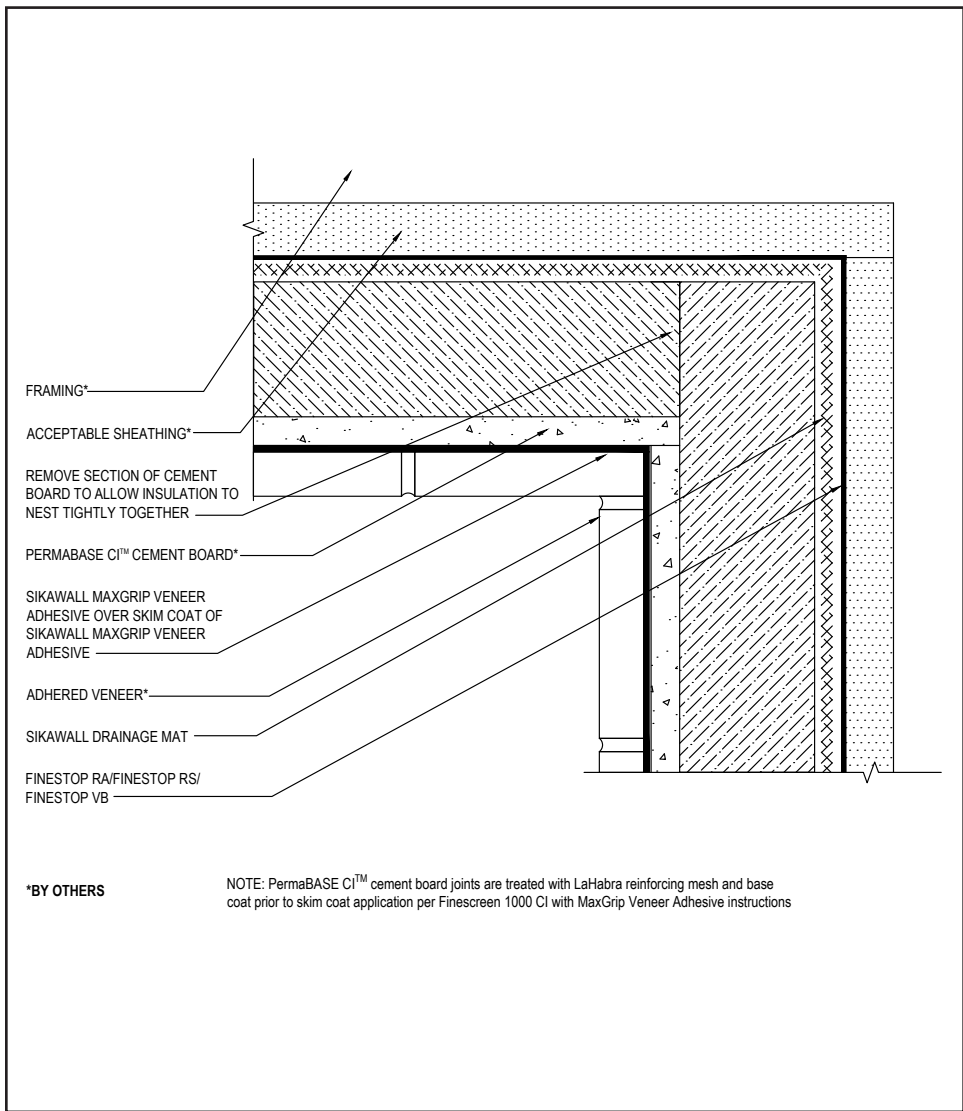
(\*NOTE: BY OTHERS)

The details within are the latest recommendations and are represented in good faith by Sika Corporation US (hereinafter Sika). The details are subject to change without notice. Sika accepts no liability for the end use of the details. For conditions not shown, consult Sika for review of specific details.

- Install Sika materials in accordance with current installation instructions.
- Unsatisfactory conditions shall be reported to the General Contractor and corrected before the application of Sika products.

# Finescreen 1000 CI with MaxGrip Veneer Adhesive

## INSIDE CORNER DETAIL



- PermaBase CI cement board joints must be treated with LaHabra reinforcing mesh and base coat prior to skim coat application of MaxGrip Veneer Adhesive.

21 0524

(\*NOTE: BY OTHERS)

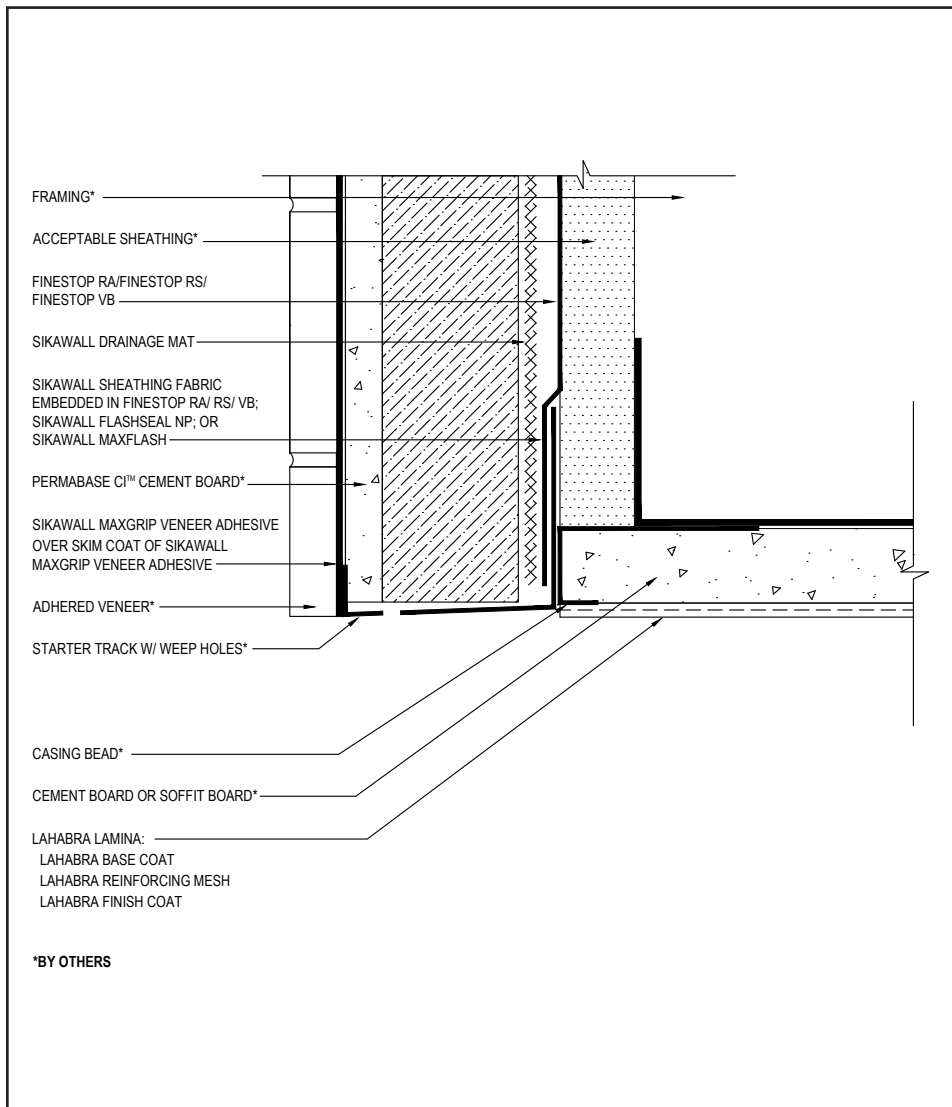
The details within are the latest recommendations and are represented in good faith by Sika Corporation US (hereinafter Sika). The details are subject to change without notice. Sika accepts no liability for the end use of the details. For conditions not shown, consult Sika for review of specific details.

- Install Sika materials in accordance with current installation instructions.
- Unsatisfactory conditions shall be reported to the General Contractor and corrected before the application of Sika products.



# Finescreen 1000 CI with MaxGrip Veneer Adhesive

## FASCIA/SOFFIT



- Ensure a means for drainage is provided at system termination at soffit.
- Extend Finestop RA/RS/VB a minimum of 4" (100mm) onto soffit. If necessary for air barrier continuity Finestop RA/RS/VB can be applied over entire soffit.
- Reference *LaHabra Finishing System for Soffits and Ceilings* published literature for additional information.
- Note that MaxGrip is not for use on overhead application.

22 0524

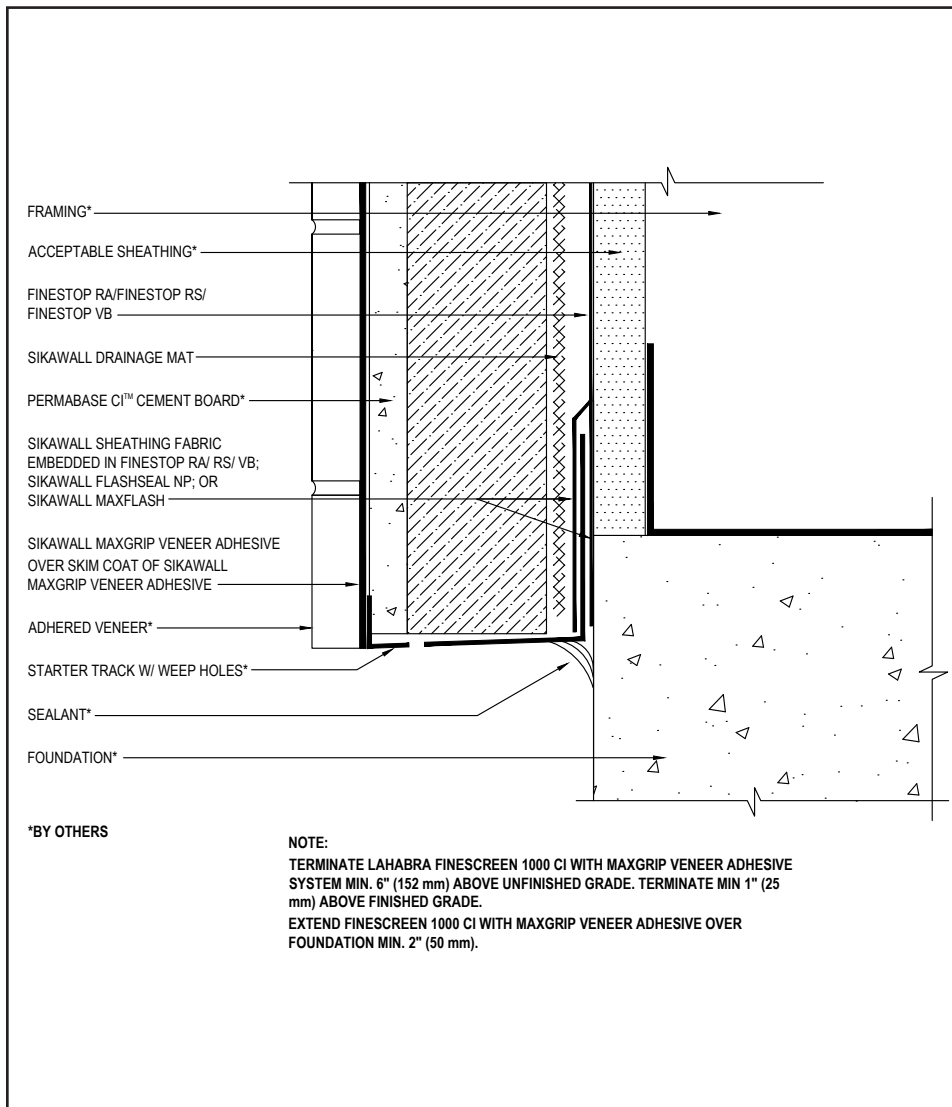
(\*NOTE: BY OTHERS)

The details within are the latest recommendations and are represented in good faith by Sika Corporation US (hereinafter Sika). The details are subject to change without notice. Sika accepts no liability for the end use of the details. For conditions not shown, consult Sika for review of specific details.

- Install Sika materials in accordance with current installation instructions.
- Unsatisfactory conditions shall be reported to the General Contractor and corrected before the application of Sika products.

# Finescreen 1000 CI with MaxGrip Veneer Adhesive

## TERMINATION AT FOUNDATION



- Terminate the Finescreen 1000 CI with MaxGrip system a minimum of 6" (152 mm) above raw earth and 1" (25 mm) above paved surface.
- Provide a minimum 2" (50 mm) overlap at framing/foundation transition.
- Ensure casing/stop bead includes weep holes to facilitate drainage.

23 0524

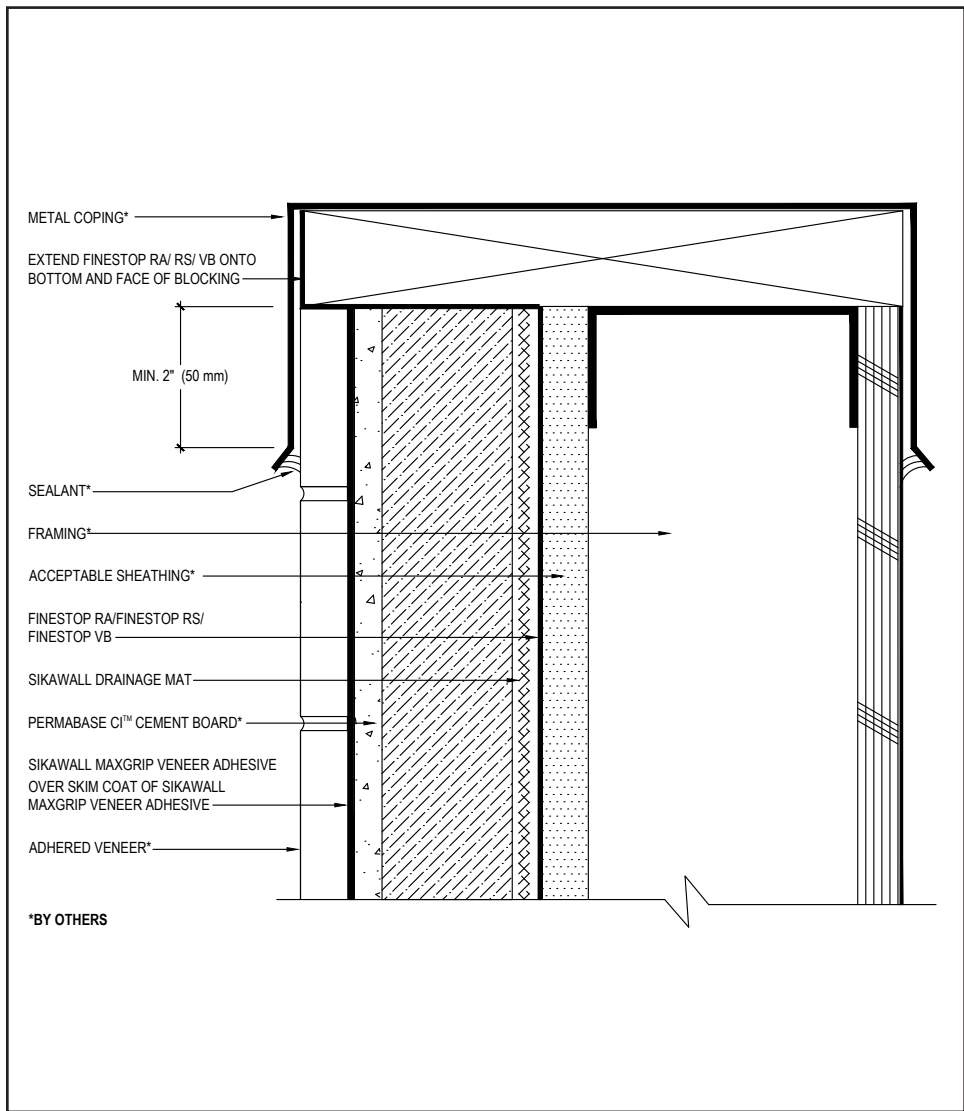
(\*NOTE: BY OTHERS)

The details within are the latest recommendations and are represented in good faith by Sika Corporation US (hereinafter Sika). The details are subject to change without notice. Sika accepts no liability for the end use of the details. For conditions not shown, consult Sika for review of specific details.

- Install Sika materials in accordance with current installation instructions.
- Unsatisfactory conditions shall be reported to the General Contractor and corrected before the application of Sika products.

# Finescreen 1000 CI with MaxGrip Veneer Adhesive

## METAL COPING DETAIL



- Ensure that coping/ flashing extends over the system a minimum of 2" (50 mm).
- Extend the LaHabra air/water-resistive barrier on to the bottom and face of blocking.

24 0524

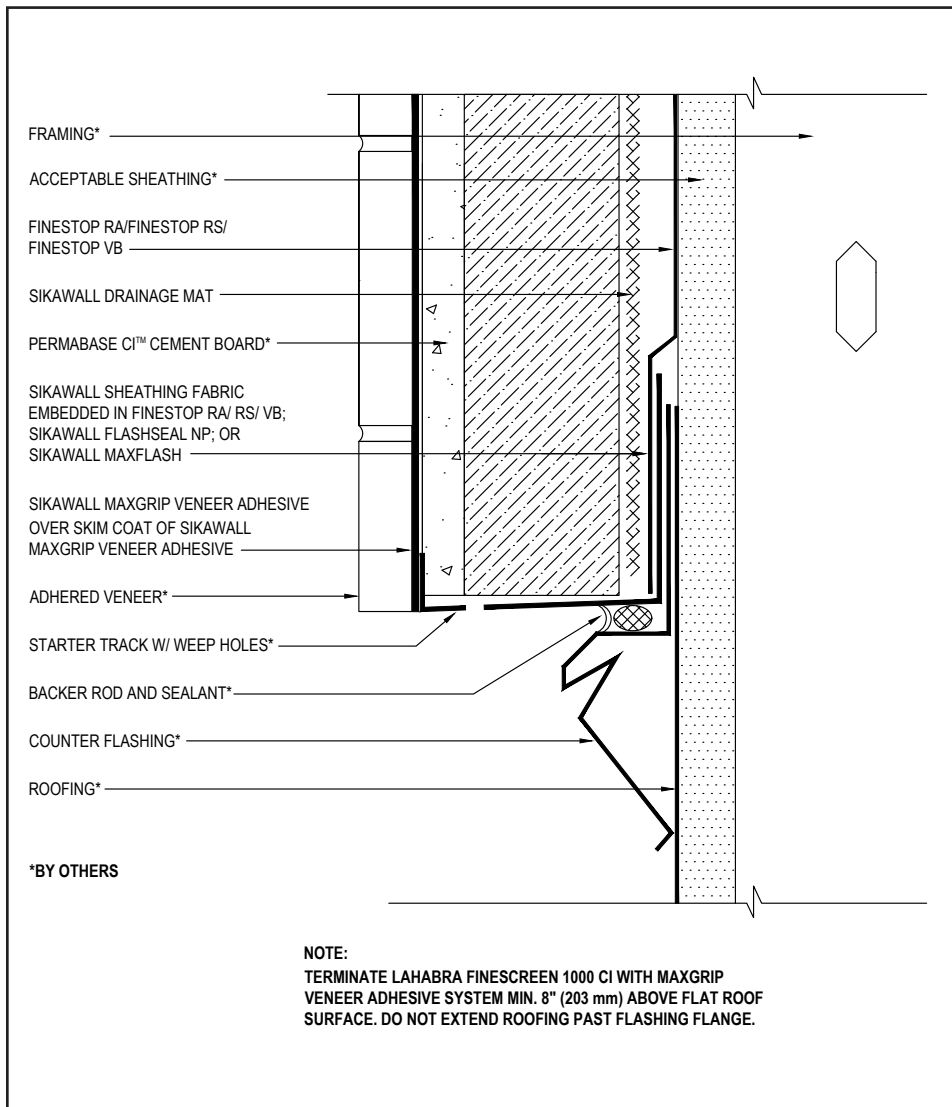
(\*NOTE: BY OTHERS)

The details within are the latest recommendations and are represented in good faith by Sika Corporation US (hereinafter Sika). The details are subject to change without notice. Sika accepts no liability for the end use of the details. For conditions not shown, consult Sika for review of specific details.

- Install Sika materials in accordance with current installation instructions.
- Unsatisfactory conditions shall be reported to the General Contractor and corrected before the application of Sika products.

# Finescreen 1000 CI with MaxGrip Veneer Adhesive

## TERMINATION ABOVE FLAT ROOF



- Ensure a means for drainage is provided at system termination.
- Terminate system a minimum of 8" (203 mm) above flat roof. Roofing material shall not extend above the flashing flange.

25 0524

(\*NOTE: BY OTHERS)

The details within are the latest recommendations and are represented in good faith by Sika Corporation US (hereinafter Sika). The details are subject to change without notice. Sika accepts no liability for the end use of the details. For conditions not shown, consult Sika for review of specific details.

- Install Sika materials in accordance with current installation instructions.
- Unsatisfactory conditions shall be reported to the General Contractor and corrected before the application of Sika products.

## LIMITED WARRANTY NOTICE

Prior to each use of any product of Sika Corporation, its subsidiaries or affiliates ("SIKA"), the user must always read and follow the warnings and instructions on the product's most current product label, Product Data Sheet and Safety Data Sheet which are available at [usa.sika.com/lahabra](http://usa.sika.com/lahabra) or by calling our Technical Service Department at +1 (800) 589-1336.

Nothing contained in any SIKA literature or materials relieves the user of the obligation to read and follow the warnings and instructions for each SIKA product as set forth in the current product label, Product Data Sheet and Safety Data Sheet prior to use of the SIKA product.

SIKA warrants this product for one year from date of installation to be free from manufacturing defects and to meet the technical properties on the current Product Data Sheet if used as directed within the product's shelf life. User determines suitability of product for intended use and assumes all risks. User's and/or buyer's sole remedy shall be limited to the purchase price or replacement of this product exclusive of any labor costs. NO OTHER WARRANTIES EXPRESS OR IMPLIED SHALL APPLY INCLUDING ANY WARRANTY OF MERCHANTABILITY OR FITNESS FOR A PARTICULAR PURPOSE. SIKA SHALL NOT BE LIABLE UNDER ANY LEGAL THEORY FOR SPECIAL OR CONSEQUENTIAL DAMAGES. SIKA SHALL NOT BE RESPONSIBLE FOR THE USE OF THIS PRODUCT IN A MANNER TO INFRINGE ON ANY PATENT OR ANY OTHER INTELLECTUAL PROPERTY RIGHTS HELD BY OTHERS. Sale of SIKA products are subject to the Terms and Conditions of Sale which are available at [usa.sika.com](http://usa.sika.com).



For the most current version of this literature, please visit our website at [usa.sika.com/lahabra](http://usa.sika.com/lahabra).

**Sika Corporation**

201 Polito Avenue  
Lyndhurst, NJ 07071 USA  
Customer Service +1 (800) 433-9517  
Technical Service +1 (800) 589-1336  
[usa.sika.com/lahabra](http://usa.sika.com/lahabra)

Rev May 2024

**BUILDING TRUST**

