

Senergy[®]



Cement Board Stucco (CBS) 1000

Typical 2D Details

BUILDING TRUST



Cement Board Stucco (CBS) 1000

Typical 2D Details

Table of Contents

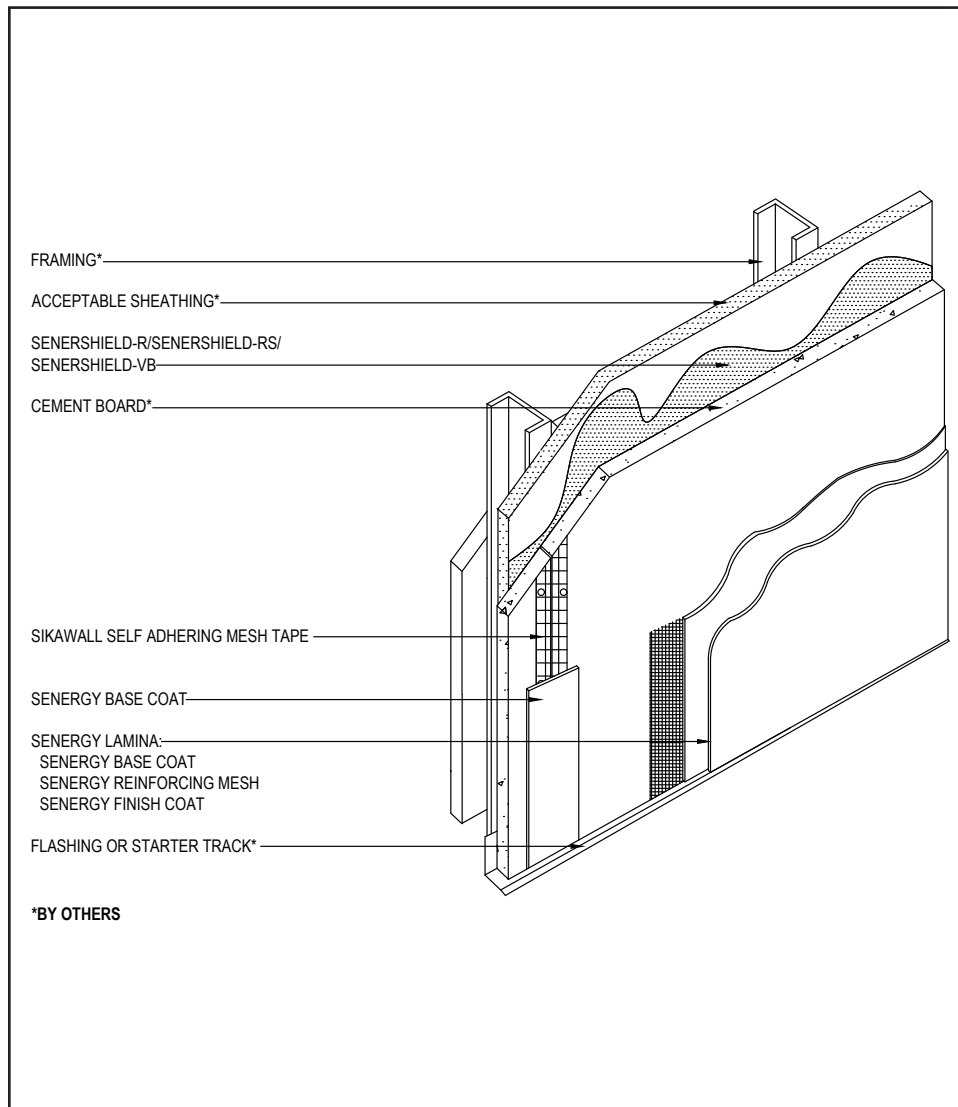
- | | |
|------------------------------------|--------------------------------------|
| 1. Application (Isometric) | 15. Dryer Vent |
| 2. Application (Plan View) | 16. Termination at Foundation |
| 3. Window Jamb (Flush) | 17. Termination Top of Deck |
| 4. Window Head (Flush) | 18. Termination Bottom of Deck |
| 5. Window Sill (Flush) | 19. Coping |
| 6. Window Jamb 45° Accessory | 20. EPS Shape Application |
| 7. Expansion Joint at Floor Line | 21. Outside Corner |
| 8. Control Joint – Reveal 1 | 22. Section at Fascia - Soffit |
| 9. Control Joint – Reveal 2 | 23. Kick-Out Flashing at Sloped Roof |
| 10. Control Joint – Reveal 3 | |
| 11. Termination Soffit – Gable End | |
| 12. Downspout Application | |
| 13. Pipe Penetration | |
| 14. Light Fixture | |

Notes:

- **The details within are the latest recommendations and are represent in good faith by Sika Corporation US (hereinafter Sika). The details are subject to change without notice. Sika accepts no liability for the end use of the details. For conditions not shown, consult Sika for review of specific details.**
- **Install Sika materials in accordance with current installation instructions.**
- **Unsatisfactory conditions shall be reported to the General Contractor and corrected before the application of Sika products.**

Cement Board Stucco (CBS) 1000

TYPICAL APPLICATION (ISOMETRIC)



- Install Senershield per published details and product data sheet prior to the installation of windows and SikaWall Drainage Mat.

01 0524

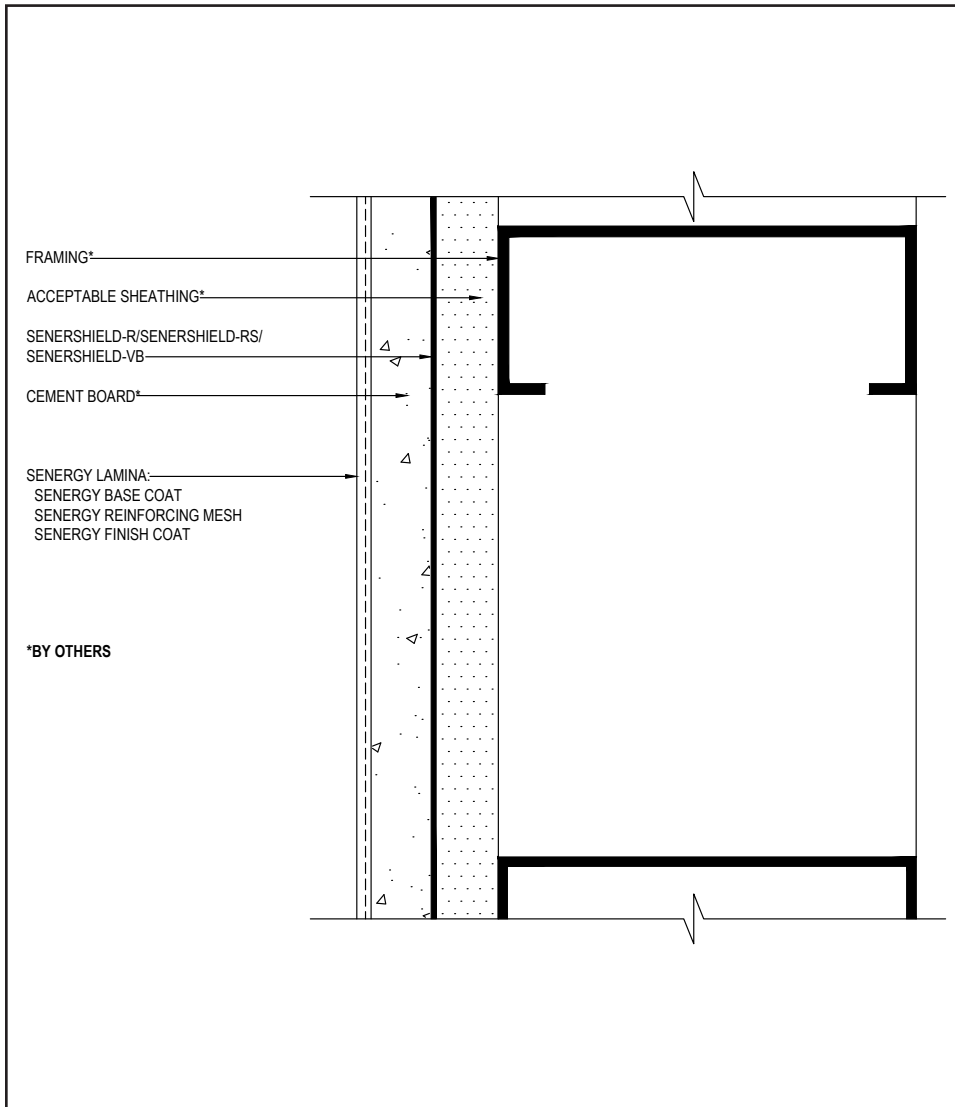
(*NOTE: BY OTHERS)

The details within are the latest recommendations and are represented in good faith by Sika Corporation US (hereinafter Sika). The details are subject to change without notice. Sika accepts no liability for the end use of the details. For conditions not shown, consult Sika for review of specific details.

- Install Sika materials in accordance with current installation instructions.
- Unsatisfactory conditions shall be reported to the General Contractor and corrected before the application of Sika products.

Cement Board Stucco (CBS) 1000

TYPICAL APPLICATION (PLAN VIEW)



- Install Senersshield per published details and product data sheet prior to the installation of windows and SikaWall Drainage Mat.

02 0524

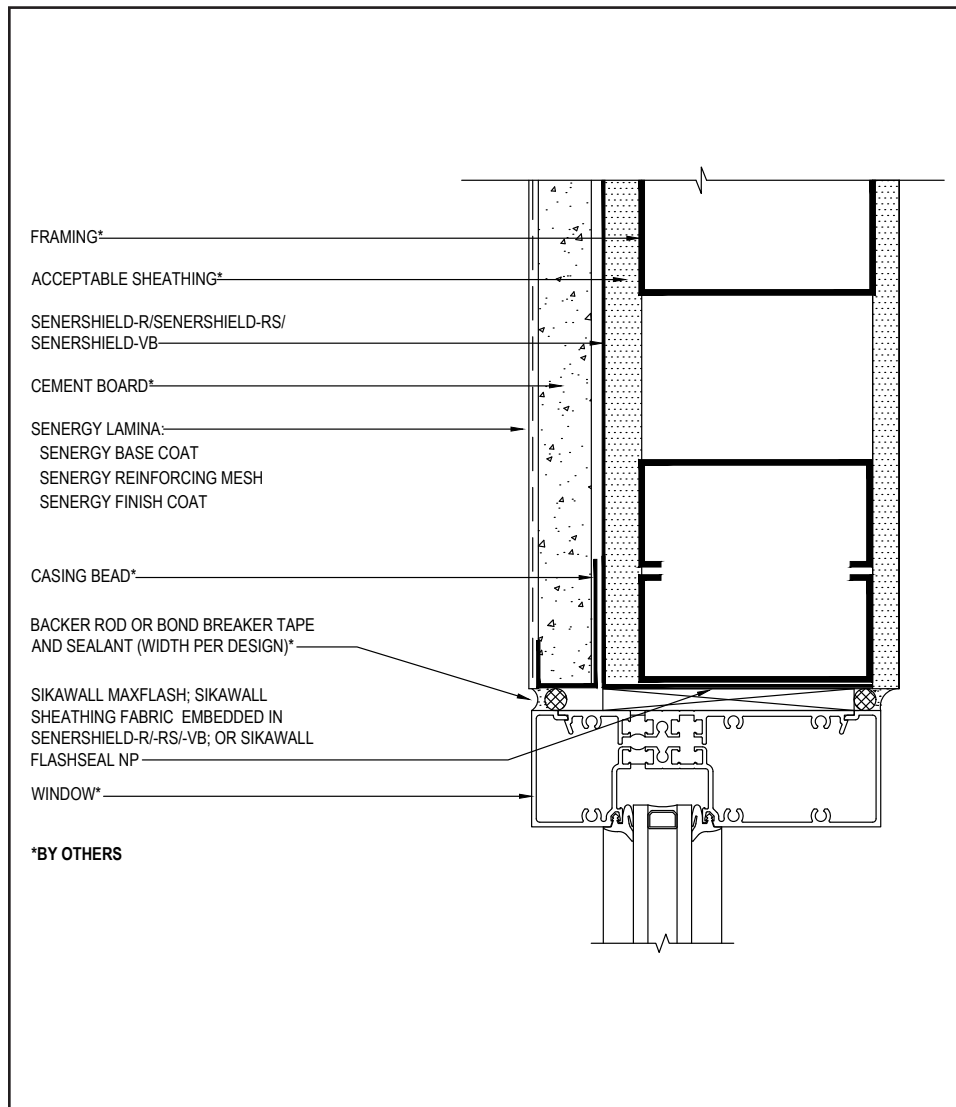
(*NOTE: BY OTHERS)

The details within are the latest recommendations and are represented in good faith by Sika Corporation US (hereinafter Sika). The details are subject to change without notice. Sika accepts no liability for the end use of the details. For conditions not shown, consult Sika for review of specific details.

- Install Sika materials in accordance with current installation instructions.
- Unsatisfactory conditions shall be reported to the General Contractor and corrected before the application of Sika products.

Cement Board Stucco (CBS) 1000

TYPICAL WINDOW JAMB (FLUSH)



- Prior to window and SikaWall Drainage Mat installation, ensure water-resistive barrier is properly applied into the rough openings in accordance with Senergy application guidelines and code requirements. Reference Senergy Senershield published typical details for further information.
- Reference *Acceptable Sealants for use with Senergy Wall Systems* Technical Bulletin for a list of sealants.
- Consult window and sealant manufacturers to verify window installation, detailing and to ensure no water leakage into the wall assembly.

03 0524

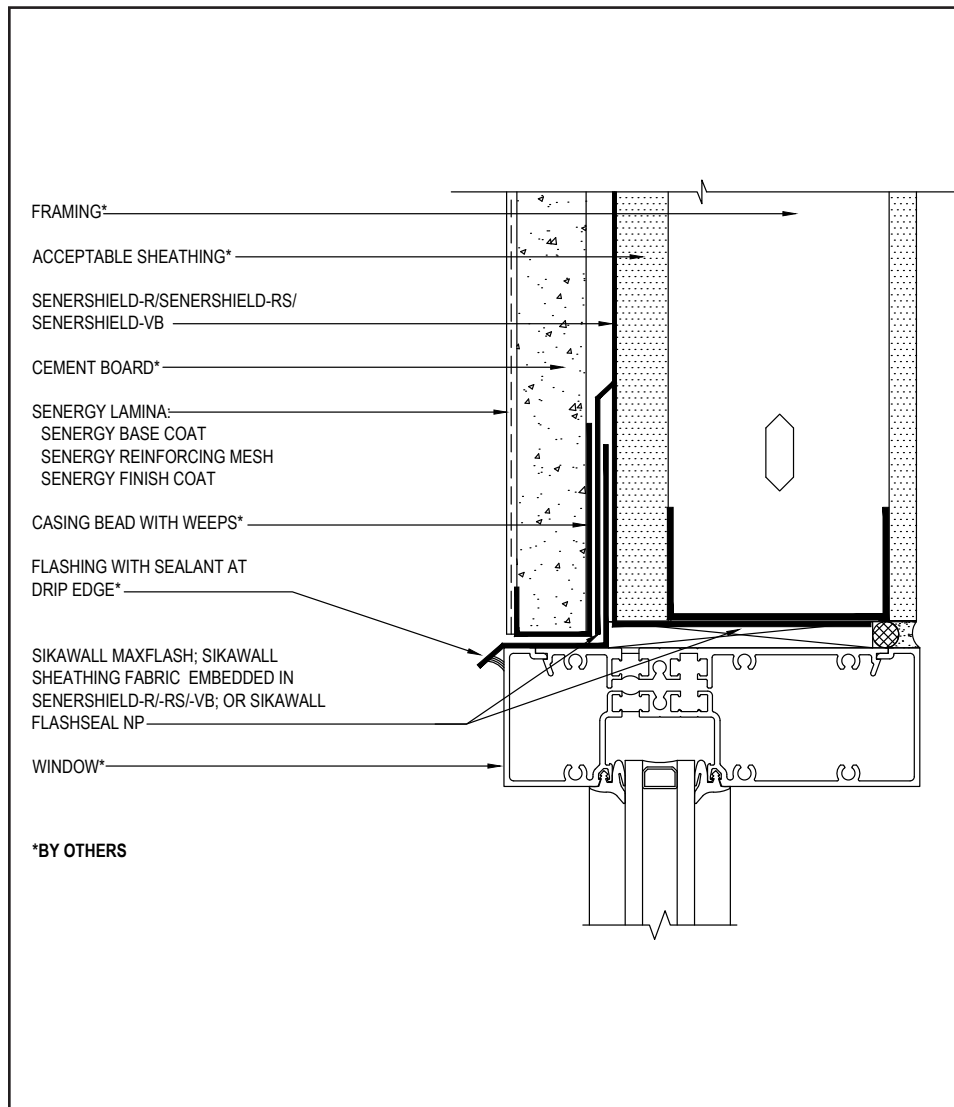
(*NOTE: BY OTHERS)

The details within are the latest recommendations and are represented in good faith by Sika Corporation US (hereinafter Sika). The details are subject to change without notice. Sika accepts no liability for the end use of the details. For conditions not shown, consult Sika for review of specific details.

- Install Sika materials in accordance with current installation instructions.
- Unsatisfactory conditions shall be reported to the General Contractor and corrected before the application of Sika products.

Cement Board Stucco (CBS) 1000

TYPICAL WINDOW HEAD (FLUSH)



- Prior to window and SikaWall Drainage Mat installation, ensure water-resistive barrier is properly applied into the rough openings in accordance with Senergy Senershield published typical details for further information.
- Ensure a means for drainage is provided at system termination at window head.
- Provide end-dams at flashing terminations.
- Consult window and sealant manufacturers to verify window installation, detailing and to ensure no water leakage into the wall assembly.

04 0524

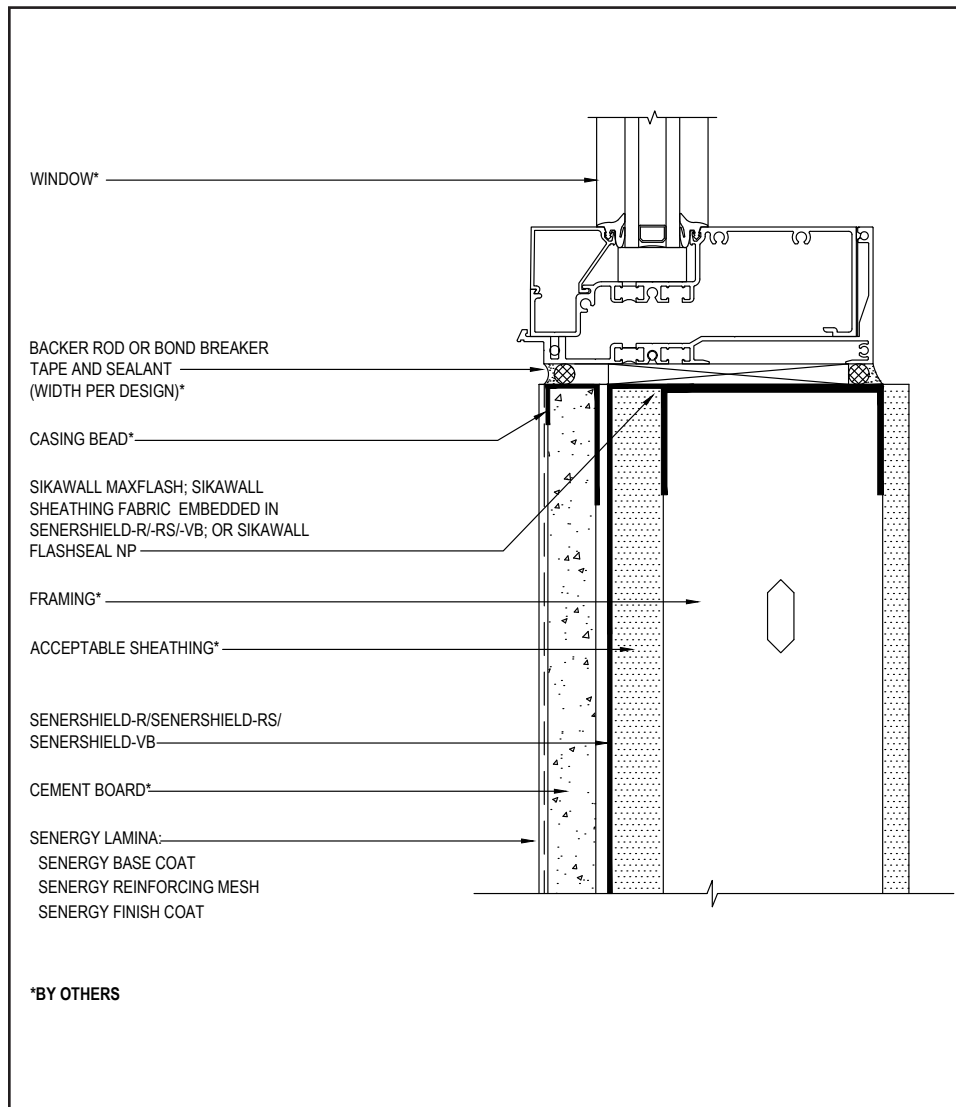
(*NOTE: BY OTHERS)

The details within are the latest recommendations and are represented in good faith by Sika Corporation US (hereinafter Sika). The details are subject to change without notice. Sika accepts no liability for the end use of the details. For conditions not shown, consult Sika for review of specific details.

- Install Sika materials in accordance with current installation instructions.
- Unsatisfactory conditions shall be reported to the General Contractor and corrected before the application of Sika products.

Cement Board Stucco (CBS) 1000

TYPICAL WINDOW SILL (FLUSH)



- Prior to window and Drainage Mat installation, ensure water-resistive barrier is properly applied into the rough openings in accordance with Senergy application guidelines and code requirements. Reference Senergy Senershield published typical details for further information.
- Consult window and sealant manufacturers to verify window installation, detailing and to ensure no water leakage into the wall assembly.

05 0524

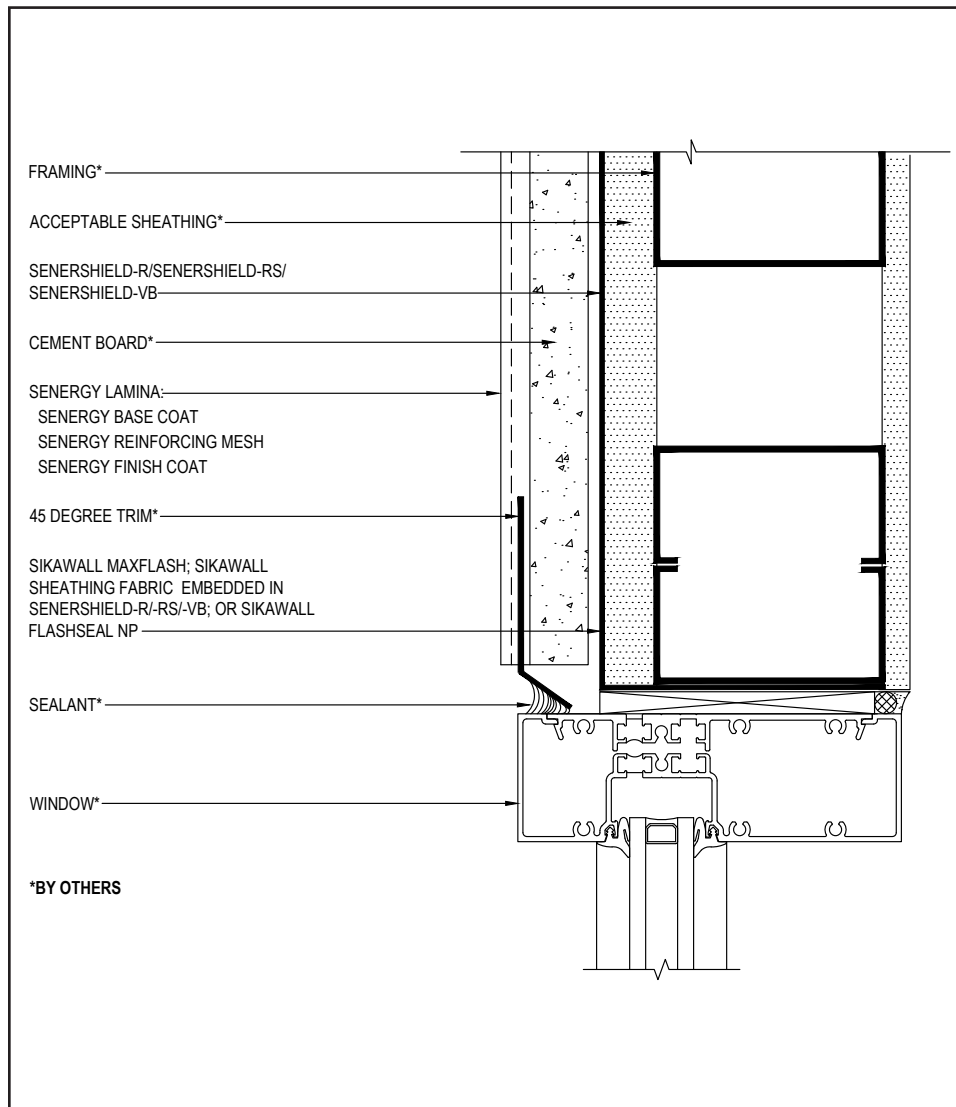
(*NOTE: BY OTHERS)

The details within are the latest recommendations and are represented in good faith by Sika Corporation US (hereinafter Sika). The details are subject to change without notice. Sika accepts no liability for the end use of the details. For conditions not shown, consult Sika for review of specific details.

- Install Sika materials in accordance with current installation instructions.
- Unsatisfactory conditions shall be reported to the General Contractor and corrected before the application of Sika products.

Cement Board Stucco (CBS) 1000

TYPICAL WINDOW JAMB 45° ACCESSORY



- Prior to window and Drainage Mat installation, ensure water-resistive barrier is properly applied into the rough openings in accordance with Senergy application guidelines and code requirements. Reference Senergy Senershield published typical details for further information.
- Reference *Acceptable Sealants for use with Senergy Wall Systems* Technical Bulletin for a list of sealants.
- Consult window and sealant manufacturers to verify window installation, detailing and to ensure no water leakage into the wall assembly.

06 0524

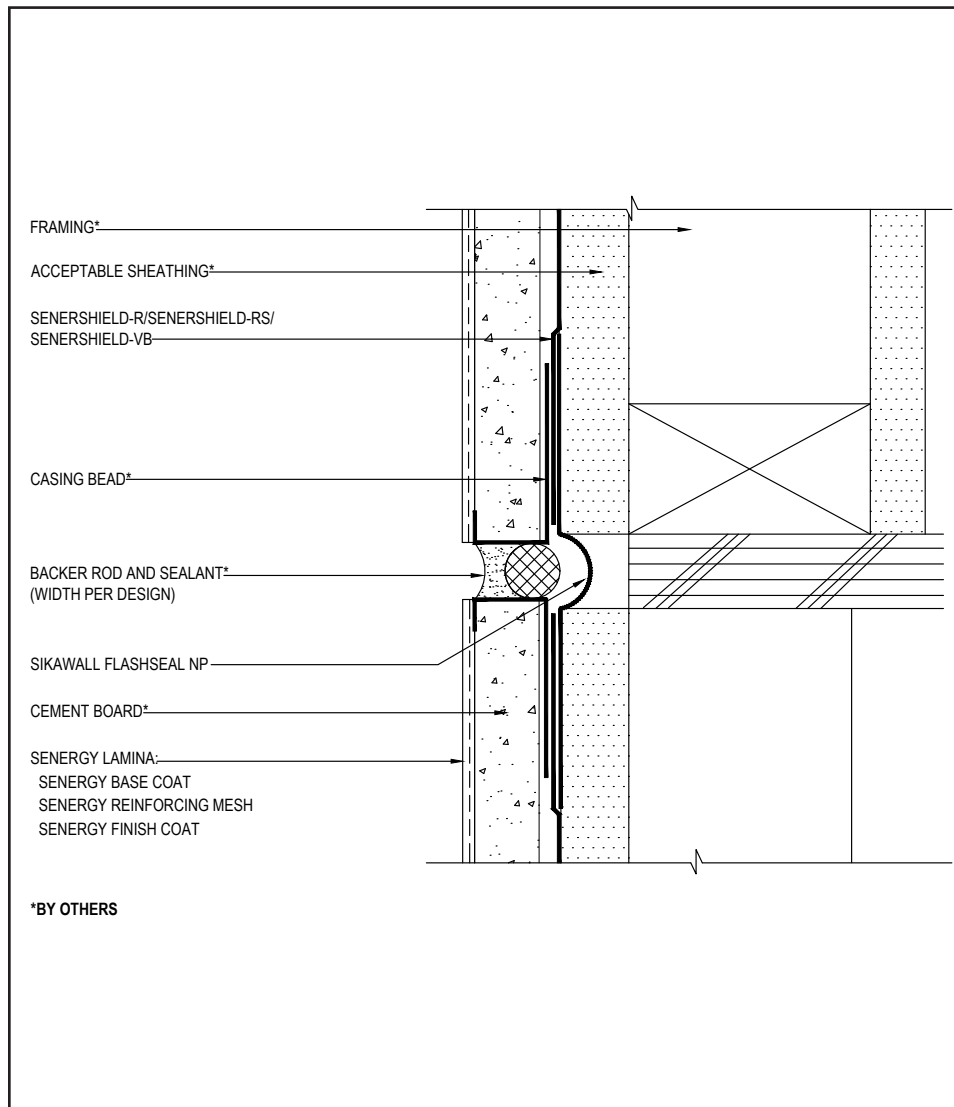
(*NOTE: BY OTHERS)

The details within are the latest recommendations and are represented in good faith by Sika Corporation US (hereinafter Sika). The details are subject to change without notice. Sika accepts no liability for the end use of the details. For conditions not shown, consult Sika for review of specific details.

- Install Sika materials in accordance with current installation instructions.
- Unsatisfactory conditions shall be reported to the General Contractor and corrected before the application of Sika products.

Cement Board Stucco (CBS) 1000

TYPICAL EXPANSION JOINT AT FLOOR LINE



- Provide sufficient slack in the SikaWall Flash Seal NP at expansion joint to allow for movement.
- Typical locations for system expansion joints are at building expansion joints, at prefabricated panel joints, floor lines of wood frame construction or where slip tracks are used in steel frame construction, where substrates change and where structural movement is anticipated. It is the sole responsibility of the project design team, including the architect, engineer, etc., to ultimately determine specific expansion joint placement, width and design. Detail specific locations in construction drawings.
- It is recommended that a means for drainage is provided at every third floor.
- Ensure drainage plane is continuous and unobstructed at expansion joint.
- Reference *Acceptable Sealants for use with Senergy Wall Systems* Technical Bulletin for a list of sealants.

07 0524

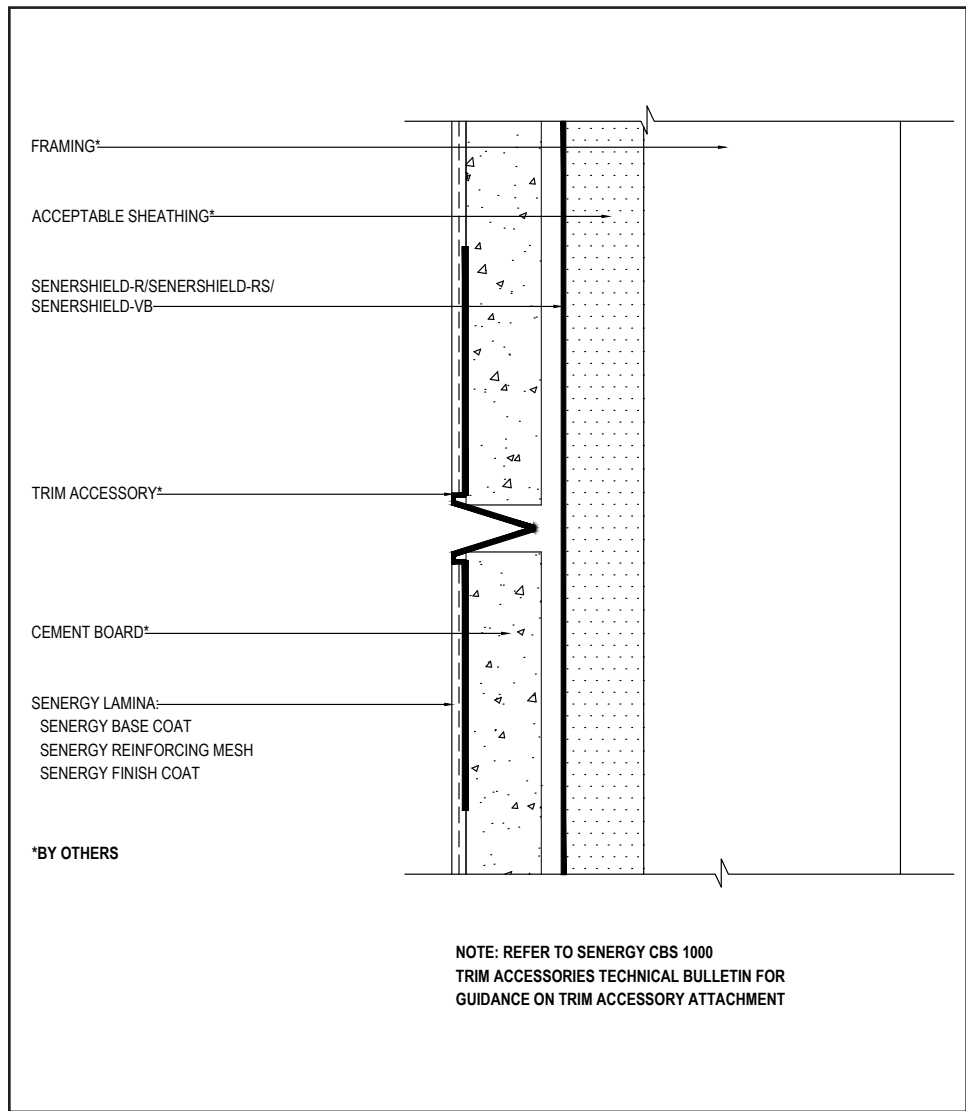
(*NOTE: BY OTHERS)

The details within are the latest recommendations and are represented in good faith by Sika Corporation US (hereinafter Sika). The details are subject to change without notice. Sika accepts no liability for the end use of the details. For conditions not shown, consult Sika for review of specific details.

- Install Sika materials in accordance with current installation instructions.
- Unsatisfactory conditions shall be reported to the General Contractor and corrected before the application of Sika products.

Cement Board Stucco (CBS) 1000

TYPICAL CONTROL JOINT - REVEAL 1



- Locate control joints approximately every 600 ft.2 (56 m²) of wall surface area with maximum uncontrolled length or width of 24 lin. ft. (7 m) and a maximum uncontrolled length-to-width ratio of 2½:1.

08 0524

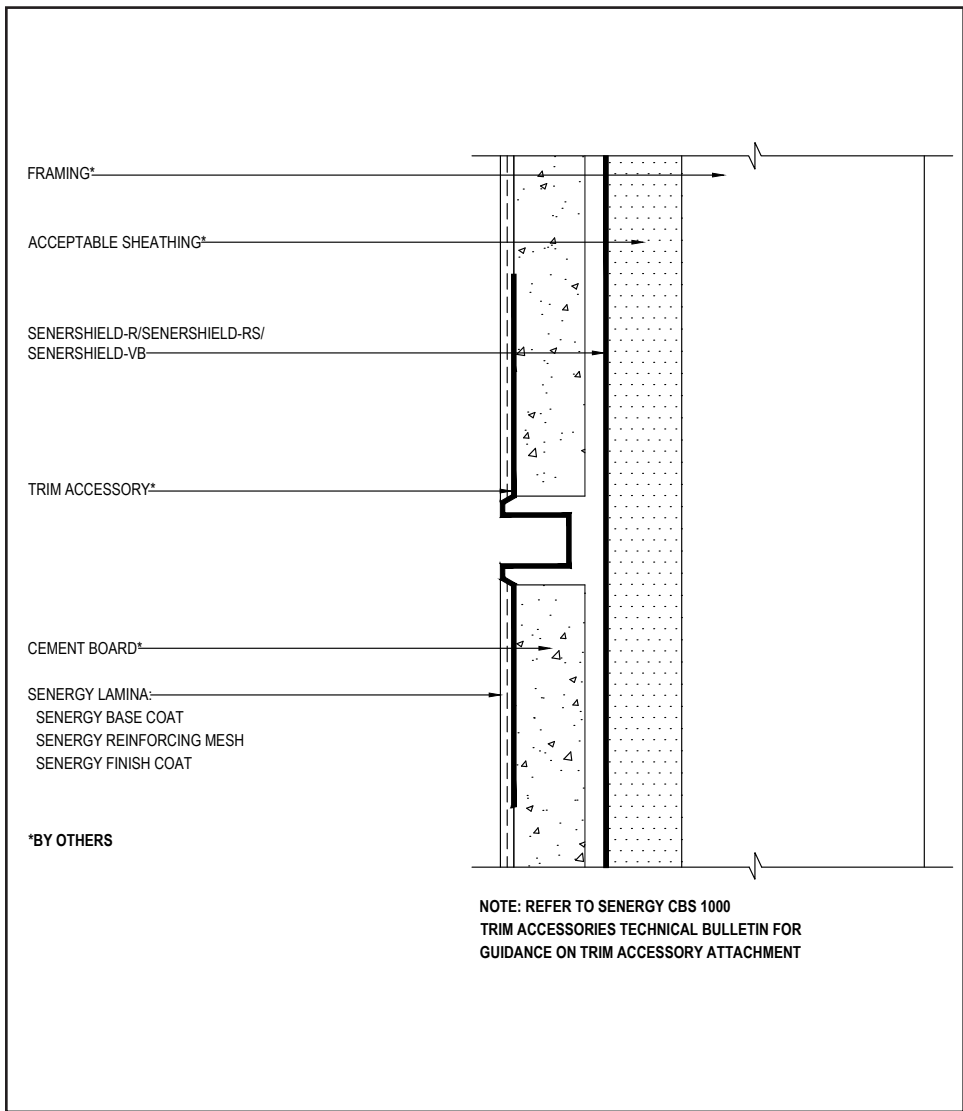
(*NOTE: BY OTHERS)

The details within are the latest recommendations and are represented in good faith by Sika Corporation US (hereinafter Sika). The details are subject to change without notice. Sika accepts no liability for the end use of the details. For conditions not shown, consult Sika for review of specific details.

- Install Sika materials in accordance with current installation instructions.
- Unsatisfactory conditions shall be reported to the General Contractor and corrected before the application of Sika products.

Cement Board Stucco (CBS) 1000

TYPICAL CONTROL JOINT - REVEAL 2



• Locate control joints approximately every 600 ft.2 (56 m²) of wall surface area with maximum uncontrolled length or width of 24 lin. ft. (7 m) and a maximum uncontrolled length-to-width ratio of 2½:1.

09 0524

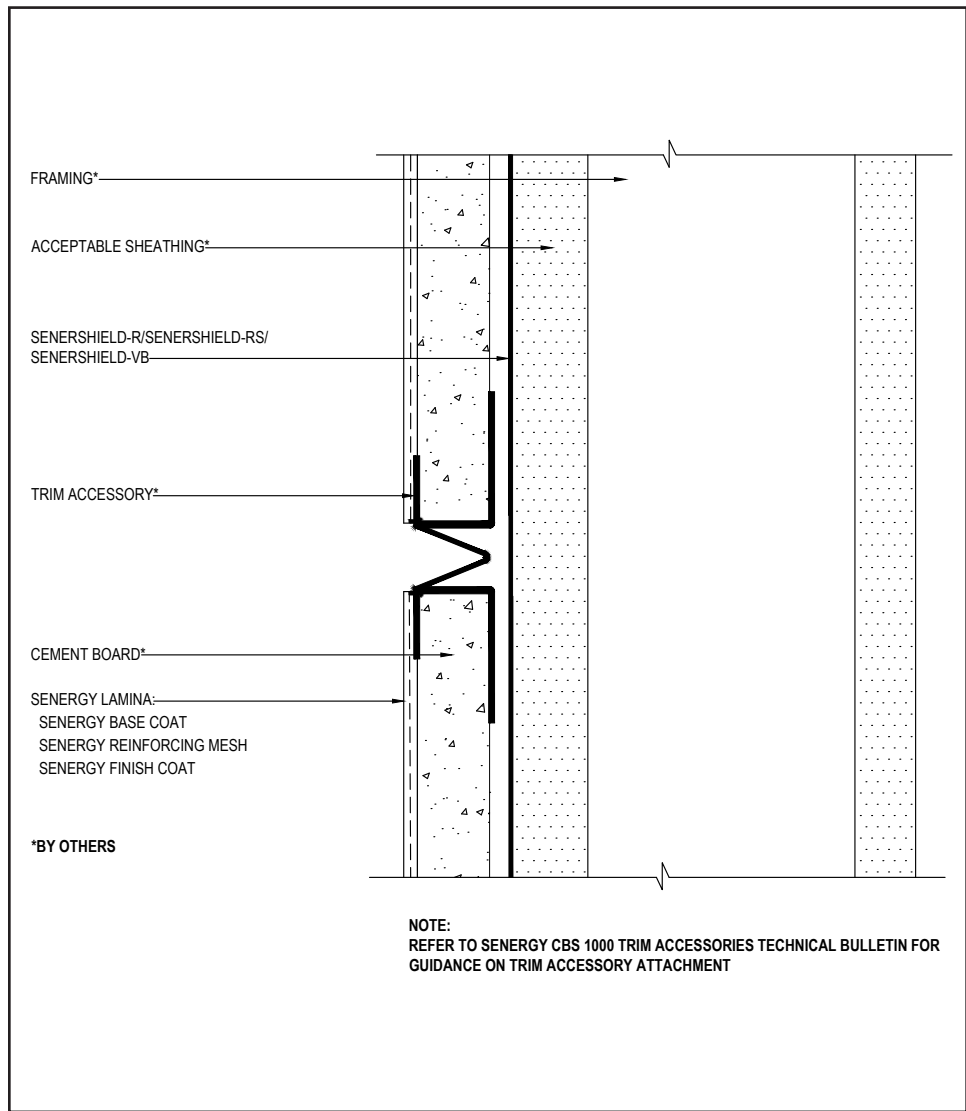
(*NOTE: BY OTHERS)

The details within are the latest recommendations and are represented in good faith by Sika Corporation US (hereinafter Sika). The details are subject to change without notice. Sika accepts no liability for the end use of the details. For conditions not shown, consult Sika for review of specific details.

- Install Sika materials in accordance with current installation instructions.
- Unsatisfactory conditions shall be reported to the General Contractor and corrected before the application of Sika products.

Cement Board Stucco (CBS) 1000

TYPICAL CONTROL JOINT - REVEAL 3



- Locate control joints approximately every 600 ft.2 (56 m²) of wall surface area with maximum uncontrolled length or width of 24 lin. ft. (7 m) and a maximum uncontrolled length-to-width ratio of 2½:1.

10 0524

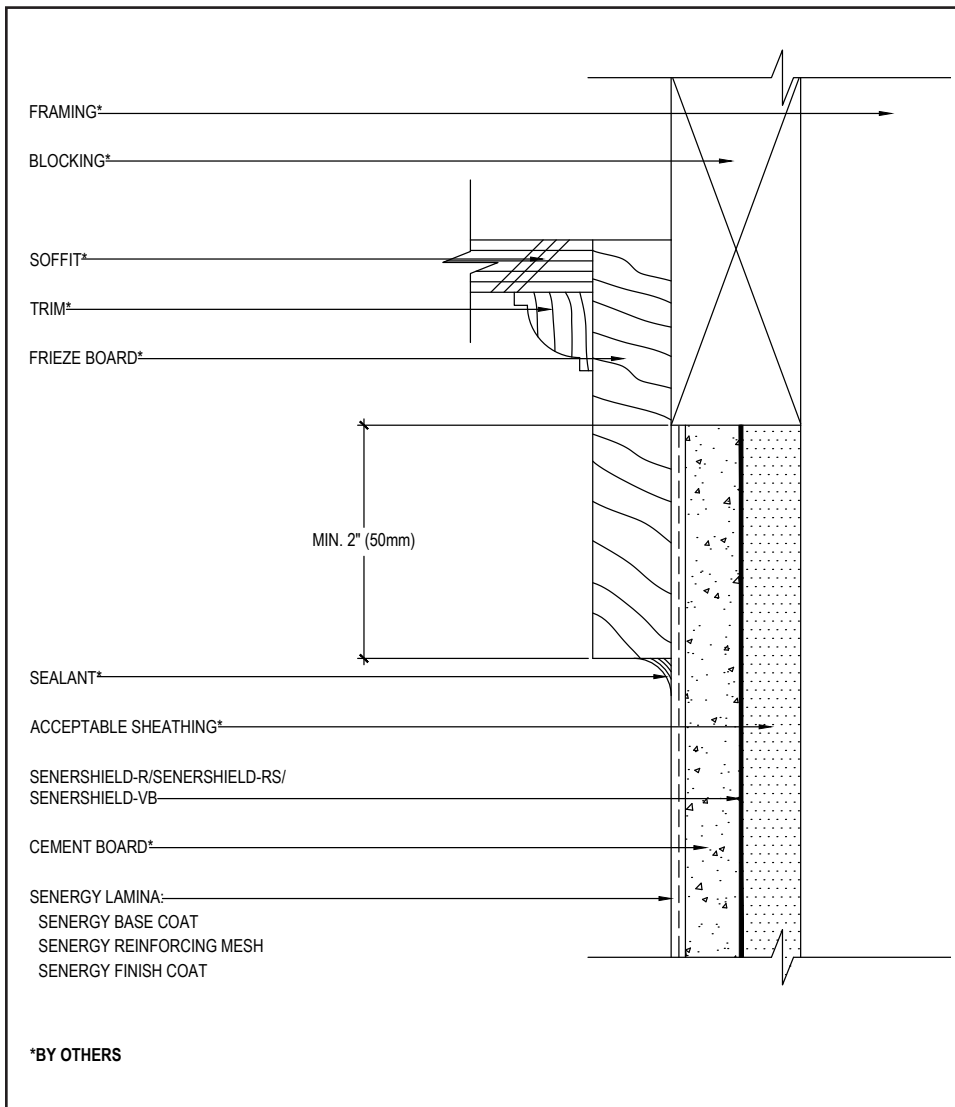
(*NOTE: BY OTHERS)

The details within are the latest recommendations and are represented in good faith by Sika Corporation US (hereinafter Sika). The details are subject to change without notice. Sika accepts no liability for the end use of the details. For conditions not shown, consult Sika for review of specific details.

- Install Sika materials in accordance with current installation instructions.
- Unsatisfactory conditions shall be reported to the General Contractor and corrected before the application of Sika products.

Cement Board Stucco (CBS) 1000

TYPICAL TERMINATION SOFFIT - GABLE END



11 0524

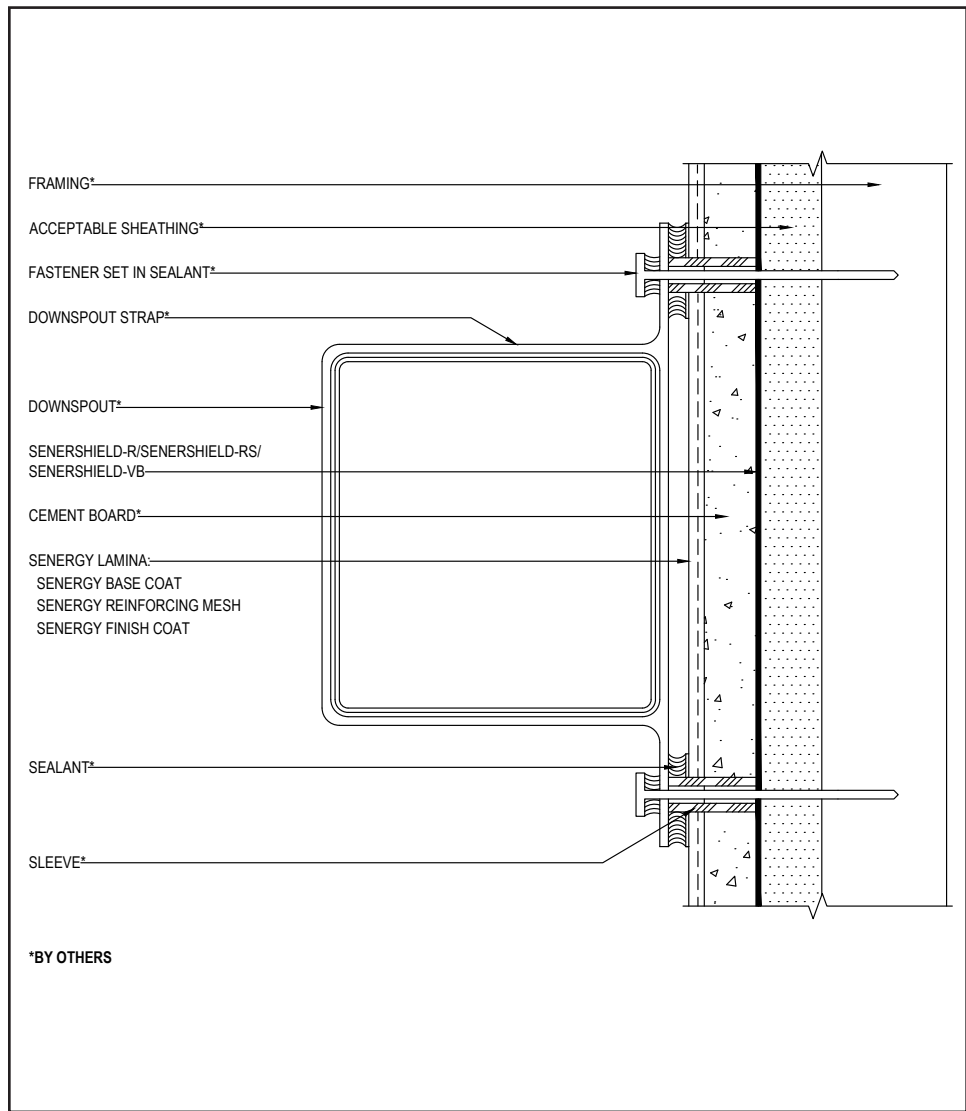
(*NOTE: BY OTHERS)

The details within are the latest recommendations and are represented in good faith by Sika Corporation US (hereinafter Sika). The details are subject to change without notice. Sika accepts no liability for the end use of the details. For conditions not shown, consult Sika for review of specific details.

- Install Sika materials in accordance with current installation instructions.
- Unsatisfactory conditions shall be reported to the General Contractor and corrected before the application of Sika products.

Cement Board Stucco (CBS) 1000

TYPICAL DOWNSPOUT APPLICATION



• Ensure all penetrations into the system are properly sealed.

*BY OTHERS

12 0524

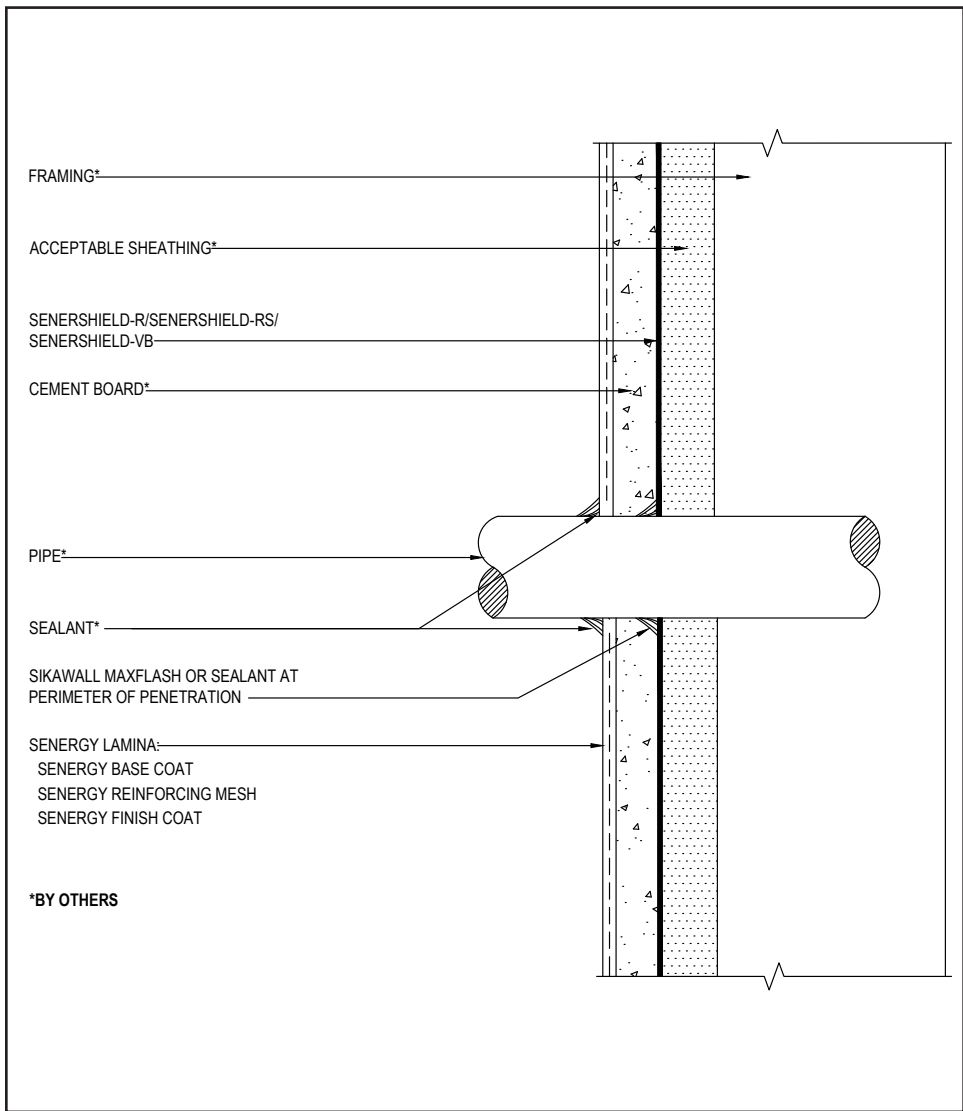
(*NOTE: BY OTHERS)

The details within are the latest recommendations and are represented in good faith by Sika Corporation US (hereinafter Sika). The details are subject to change without notice. Sika accepts no liability for the end use of the details. For conditions not shown, consult Sika for review of specific details.

- Install Sika materials in accordance with current installation instructions.
- Unsatisfactory conditions shall be reported to the General Contractor and corrected before the application of Sika products.

Cement Board Stucco (CBS) 1000

TYPICAL PIPE PENETRATION



- Ensure all penetrations into the system are properly sealed.
- Provide continuous air seal around perimeter of penetration prior to SikaWall Drainage Mat application.

13 0524

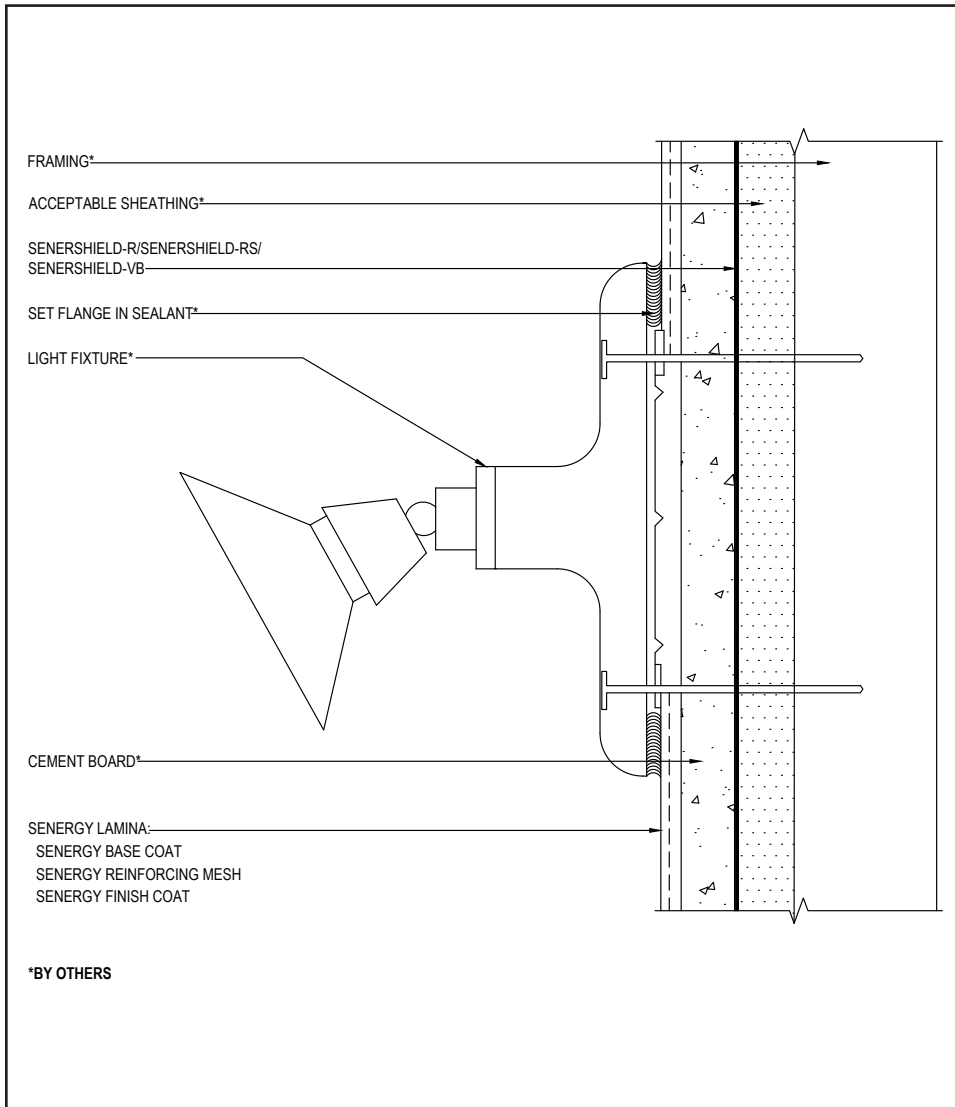
(*NOTE: BY OTHERS)

The details within are the latest recommendations and are represented in good faith by Sika Corporation US (hereinafter Sika). The details are subject to change without notice. Sika accepts no liability for the end use of the details. For conditions not shown, consult Sika for review of specific details.

- Install Sika materials in accordance with current installation instructions.
- Unsatisfactory conditions shall be reported to the General Contractor and corrected before the application of Sika products.

Cement Board Stucco (CBS) 1000

TYPICAL LIGHT FIXTURE



• Ensure all penetrations into the system are properly sealed.

14 0524

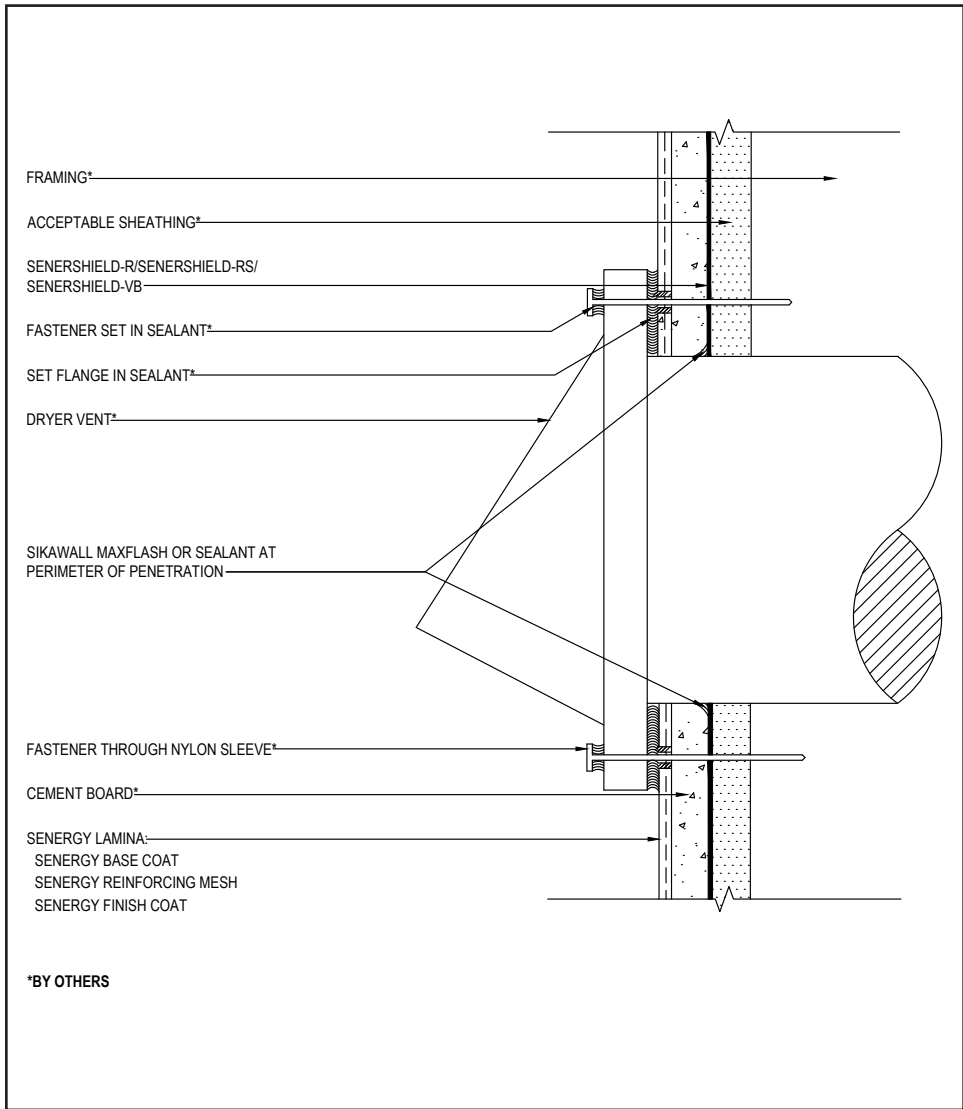
(*NOTE: BY OTHERS)

The details within are the latest recommendations and are represented in good faith by Sika Corporation US (hereinafter Sika). The details are subject to change without notice. Sika accepts no liability for the end use of the details. For conditions not shown, consult Sika for review of specific details.

- Install Sika materials in accordance with current installation instructions.
- Unsatisfactory conditions shall be reported to the General Contractor and corrected before the application of Sika products.

Cement Board Stucco (CBS) 1000

TYPICAL DRYER VENT



- Ensure all penetrations into the system are properly sealed.
- Provide continuous air seal around perimeter of penetration prior to SikaWall Drainage Mat application. Reference *Acceptable Sealants for use with Senershield- R/-RS/-VB* Technical Bulletin for a list of sealants.

15 0524

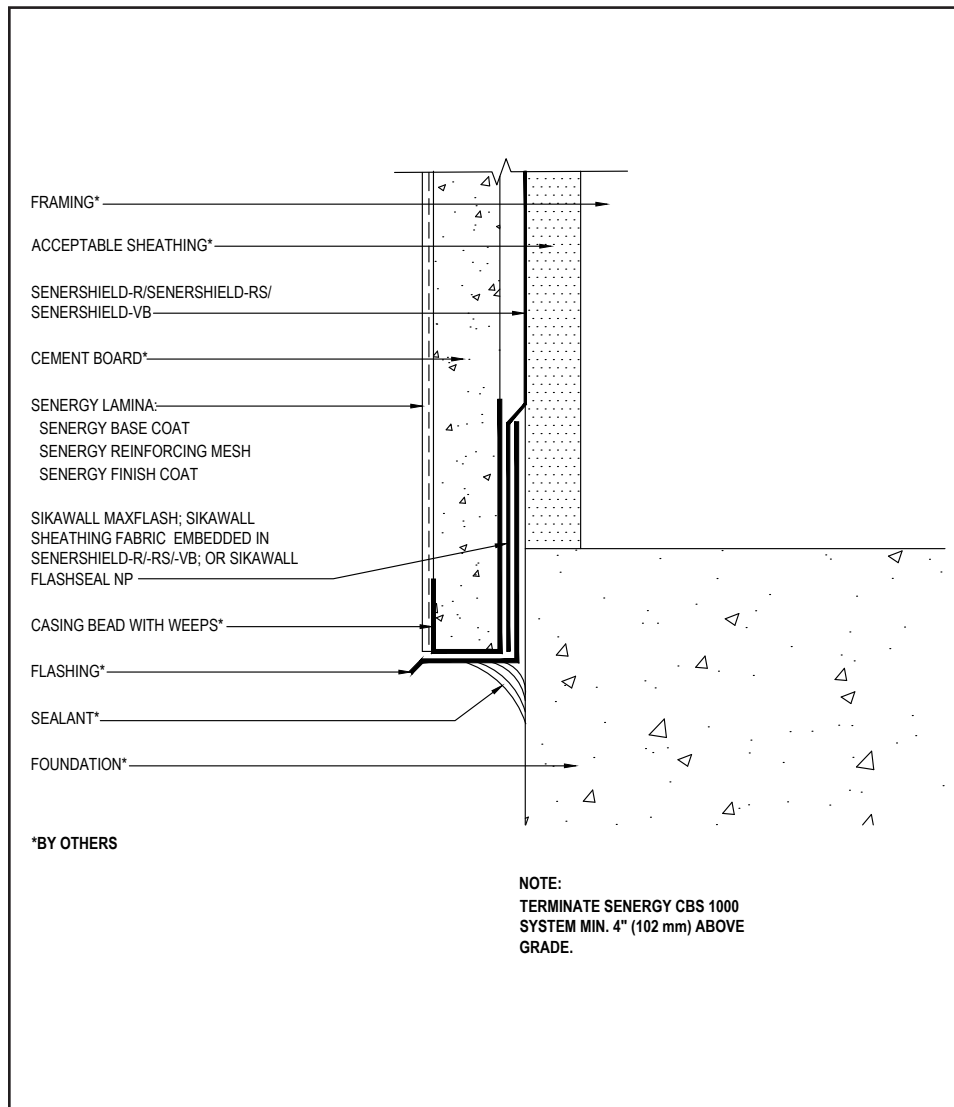
(*NOTE: BY OTHERS)

The details within are the latest recommendations and are represented in good faith by Sika Corporation US (hereinafter Sika). The details are subject to change without notice. Sika accepts no liability for the end use of the details. For conditions not shown, consult Sika for review of specific details.

- Install Sika materials in accordance with current installation instructions.
- Unsatisfactory conditions shall be reported to the General Contractor and corrected before the application of Sika products.

Cement Board Stucco (CBS) 1000

TYPICAL TERMINATION AT FOUNDATION



- Terminate the CBS 1000 system a minimum of 4" (152 mm) above raw earth and 2" (50 mm) above paved surface.
- Provide a minimum 2" (50 mm) overlap at framing/foundation transition.

16 0524

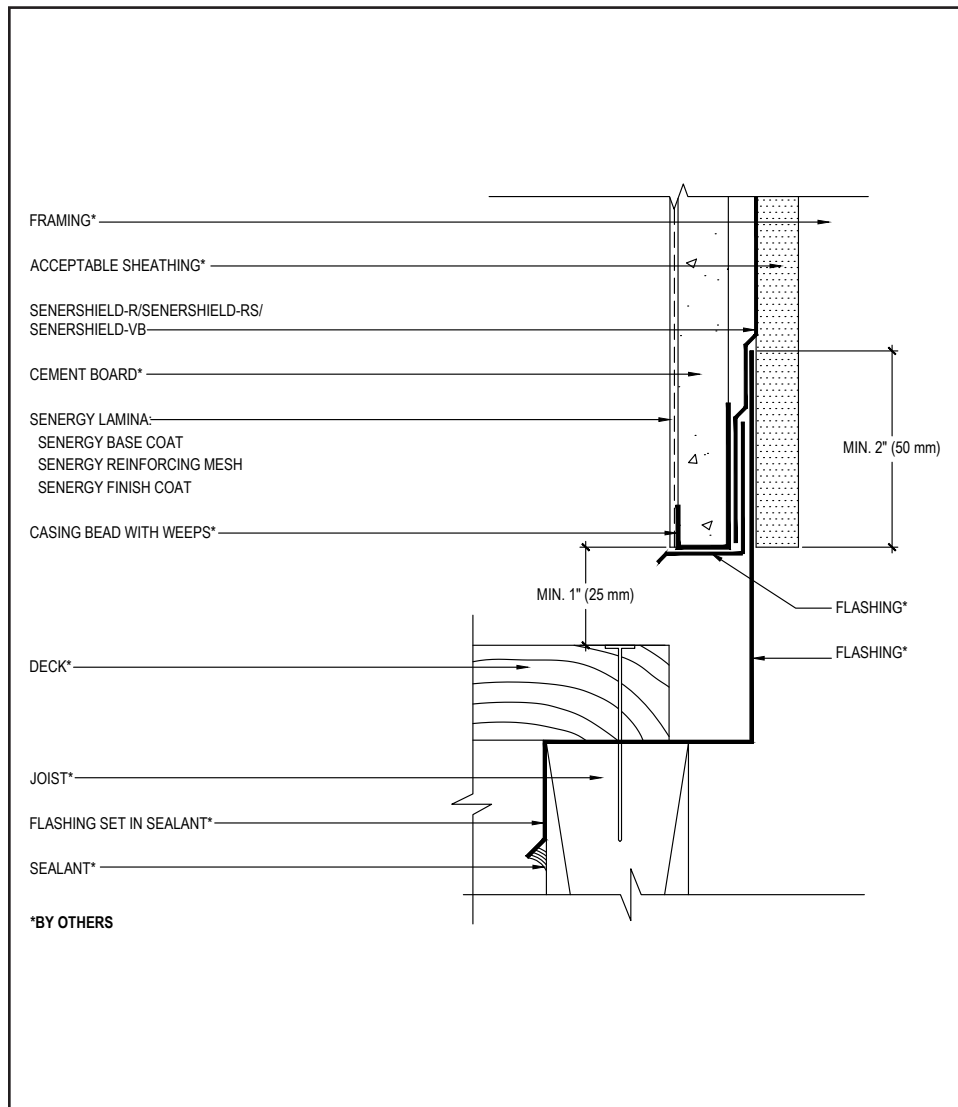
(*NOTE: BY OTHERS)

The details within are the latest recommendations and are represented in good faith by Sika Corporation US (hereinafter Sika). The details are subject to change without notice. Sika accepts no liability for the end use of the details. For conditions not shown, consult Sika for review of specific details.

- Install Sika materials in accordance with current installation instructions.
- Unsatisfactory conditions shall be reported to the General Contractor and corrected before the application of Sika products.

Cement Board Stucco (CBS) 1000

TYPICAL TERMINATION TOP OF DECK



- Terminate the CBS 1000 system a minimum of 1" (25 mm) above deck.

17 0424

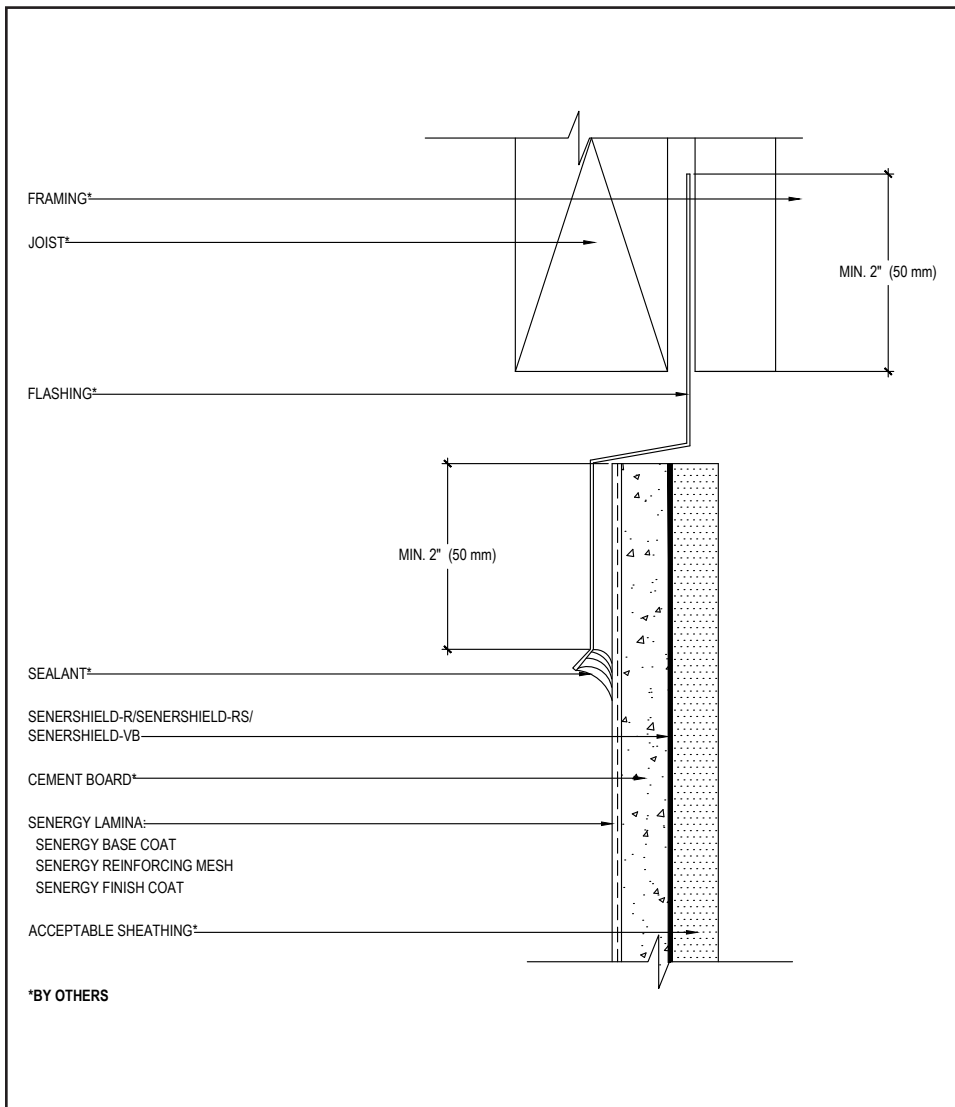
(*NOTE: BY OTHERS)

The details within are the latest recommendations and are represented in good faith by Sika Corporation US (hereinafter Sika). The details are subject to change without notice. Sika accepts no liability for the end use of the details. For conditions not shown, consult Sika for review of specific details.

- Install Sika materials in accordance with current installation instructions.
- Unsatisfactory conditions shall be reported to the General Contractor and corrected before the application of Sika products.

Cement Board Stucco (CBS) 1000

TYPICAL TERMINATION BOTTOM OF DECK



- Ensure that metal flashing extends onto the system a minimum of 2" (50 mm) down the face of CBS 1000 system.

18 0524

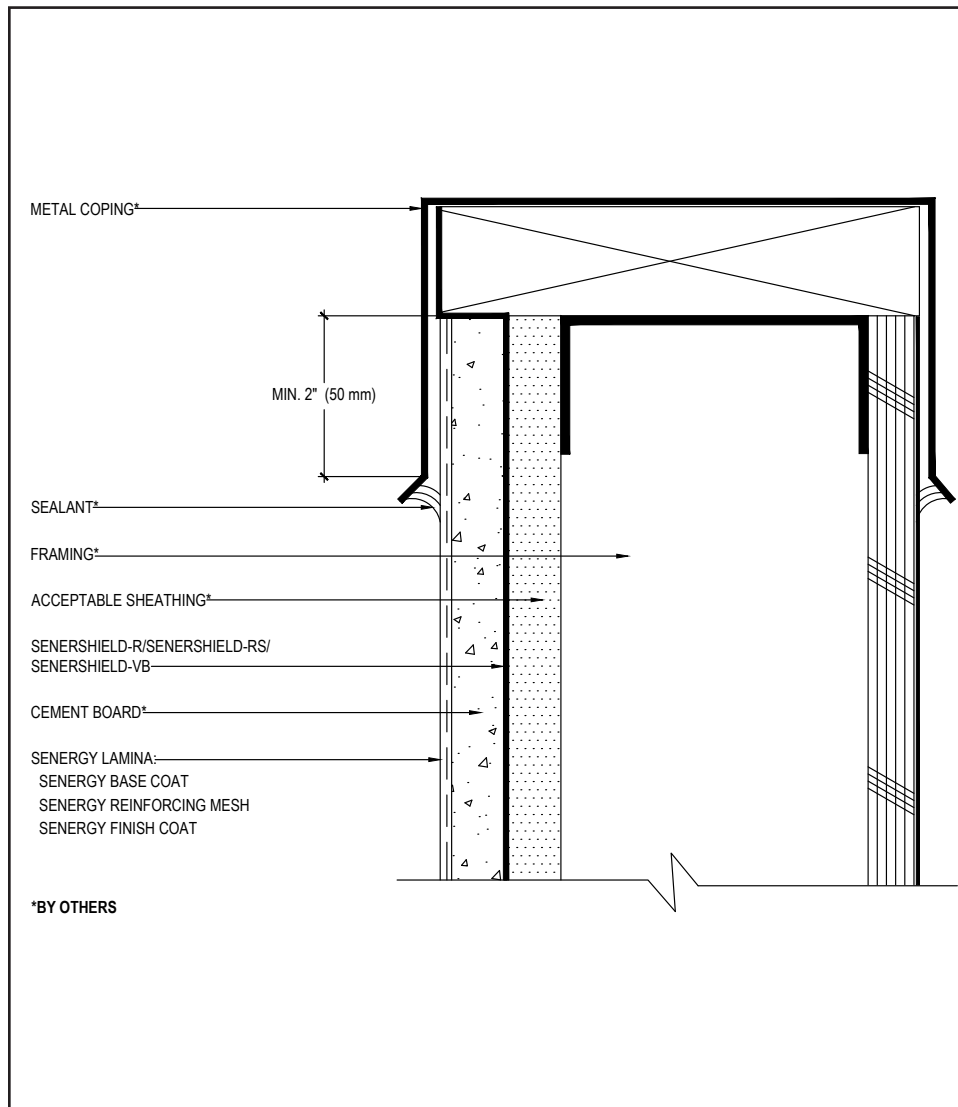
(*NOTE: BY OTHERS)

The details within are the latest recommendations and are represented in good faith by Sika Corporation US (hereinafter Sika). The details are subject to change without notice. Sika accepts no liability for the end use of the details. For conditions not shown, consult Sika for review of specific details.

- Install Sika materials in accordance with current installation instructions.
- Unsatisfactory conditions shall be reported to the General Contractor and corrected before the application of Sika products.

Cement Board Stucco (CBS) 1000

TYPICAL COPING



- Ensure that metal coping extends onto the system a minimum of 2" (50 mm) down the face.
- Extend Senersshield-R/-RS/-VB or SikaWall MaxFlash onto bottom of blocking or provide alternate air seal at sheathing termination to blocking.

19 0524

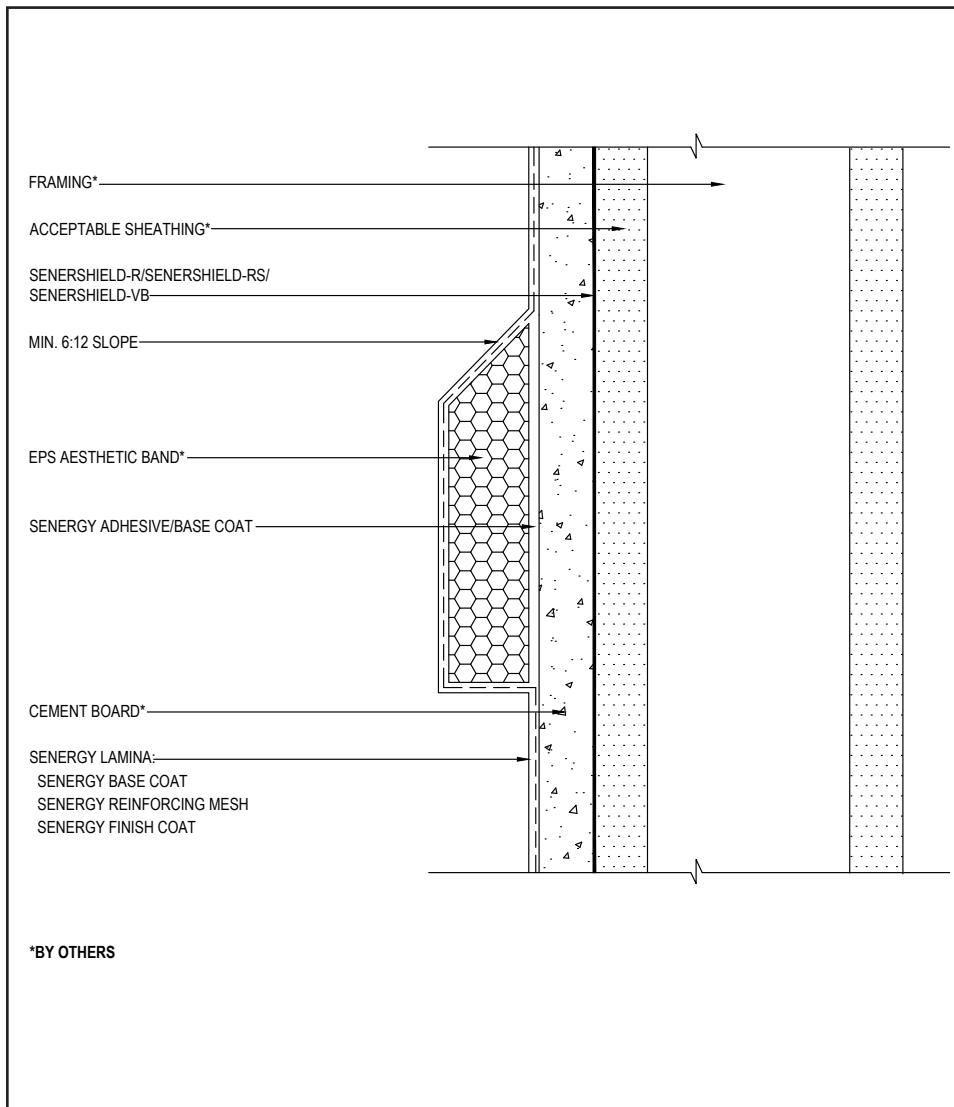
(*NOTE: BY OTHERS)

The details within are the latest recommendations and are represented in good faith by Sika Corporation US (hereinafter Sika). The details are subject to change without notice. Sika accepts no liability for the end use of the details. For conditions not shown, consult Sika for review of specific details.

- Install Sika materials in accordance with current installation instructions.
- Unsatisfactory conditions shall be reported to the General Contractor and corrected before the application of Sika products.

Cement Board Stucco (CBS) 1000

TYPICAL EPS SHAPE APPLICATION



- On horizontal projections greater than 1" (25mm) maintain a minimum 6:12 slope. For sloped surfaces over 24" (340mm), a roofing system or a metal cap flashing is required.

20 0524

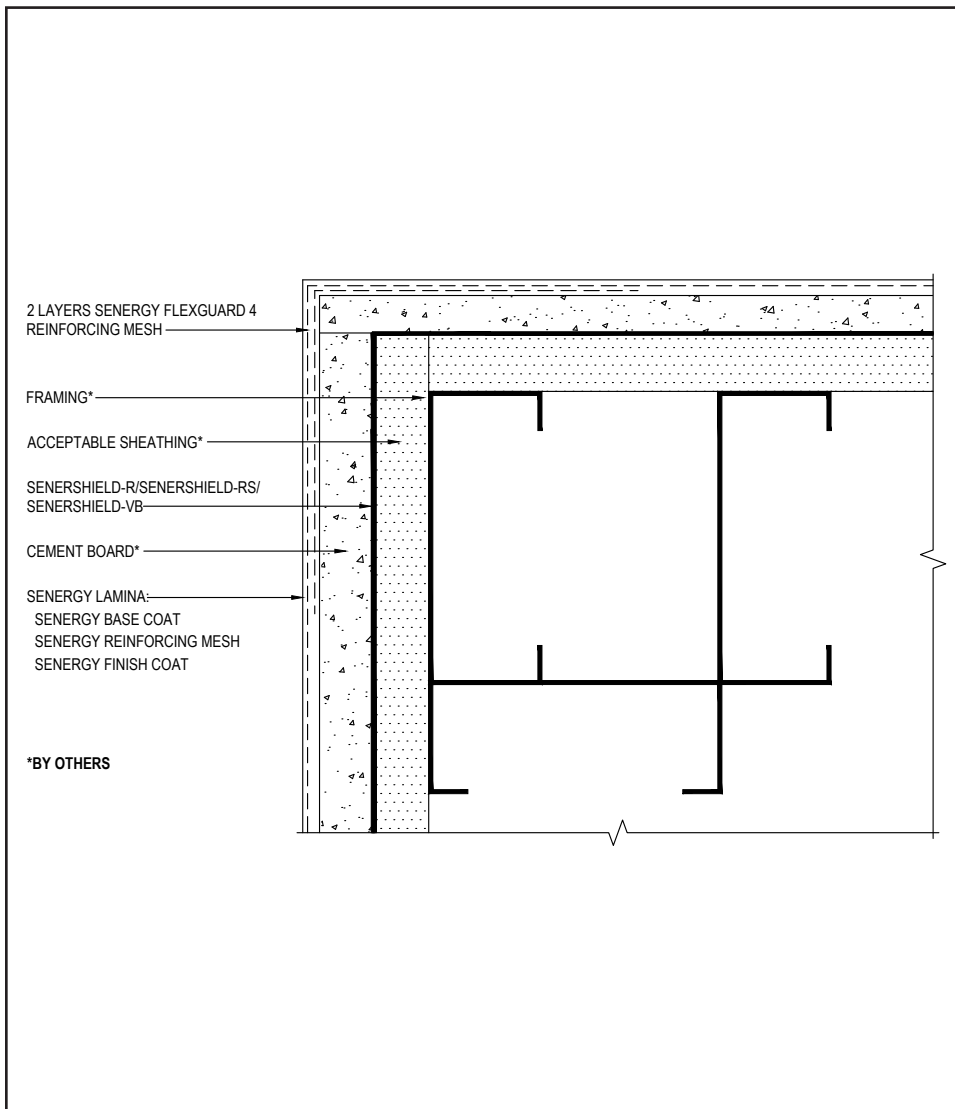
(*NOTE: BY OTHERS)

The details within are the latest recommendations and are represented in good faith by Sika Corporation US (hereinafter Sika). The details are subject to change without notice. Sika accepts no liability for the end use of the details. For conditions not shown, consult Sika for review of specific details.

- Install Sika materials in accordance with current installation instructions.
- Unsatisfactory conditions shall be reported to the General Contractor and corrected before the application of Sika products.

Cement Board Stucco (CBS) 1000

TYPICAL OUTSIDE CORNER



- Ensure Flexguard 4 Reinforcing Mesh is lapped a minimum of 8" (203 mm) around corner on both sides.

21 0524

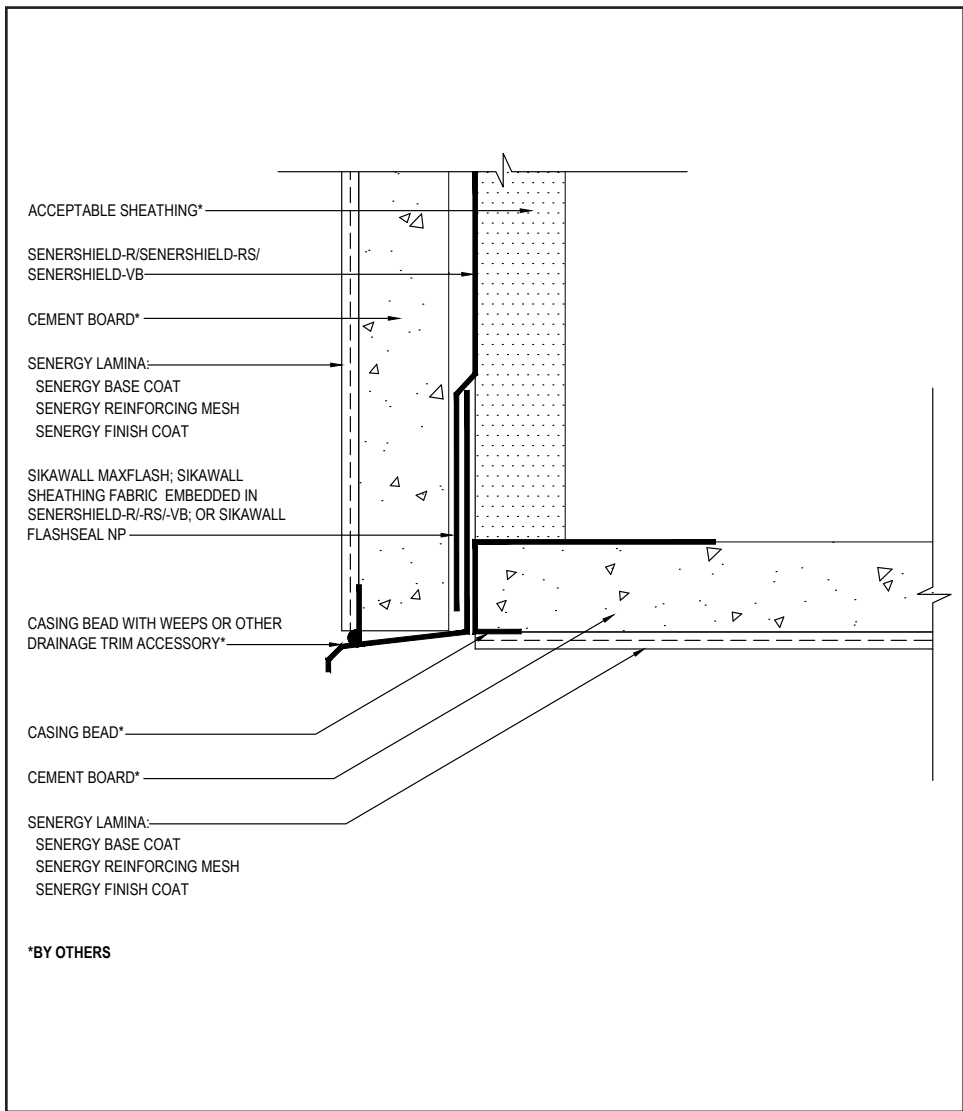
(*NOTE: BY OTHERS)

The details within are the latest recommendations and are represented in good faith by Sika Corporation US (hereinafter Sika). The details are subject to change without notice. Sika accepts no liability for the end use of the details. For conditions not shown, consult Sika for review of specific details.

- Install Sika materials in accordance with current installation instructions.
- Unsatisfactory conditions shall be reported to the General Contractor and corrected before the application of Sika products.

Cement Board Stucco (CBS) 1000

TYPICAL SECTION AT FASCIA - SOFFIT



- Ensure a means for drainage is provided at system termination at soffit.
- Reference Senergy Finishing System for Soffits and Ceilings published literature for additional information.

22 0524

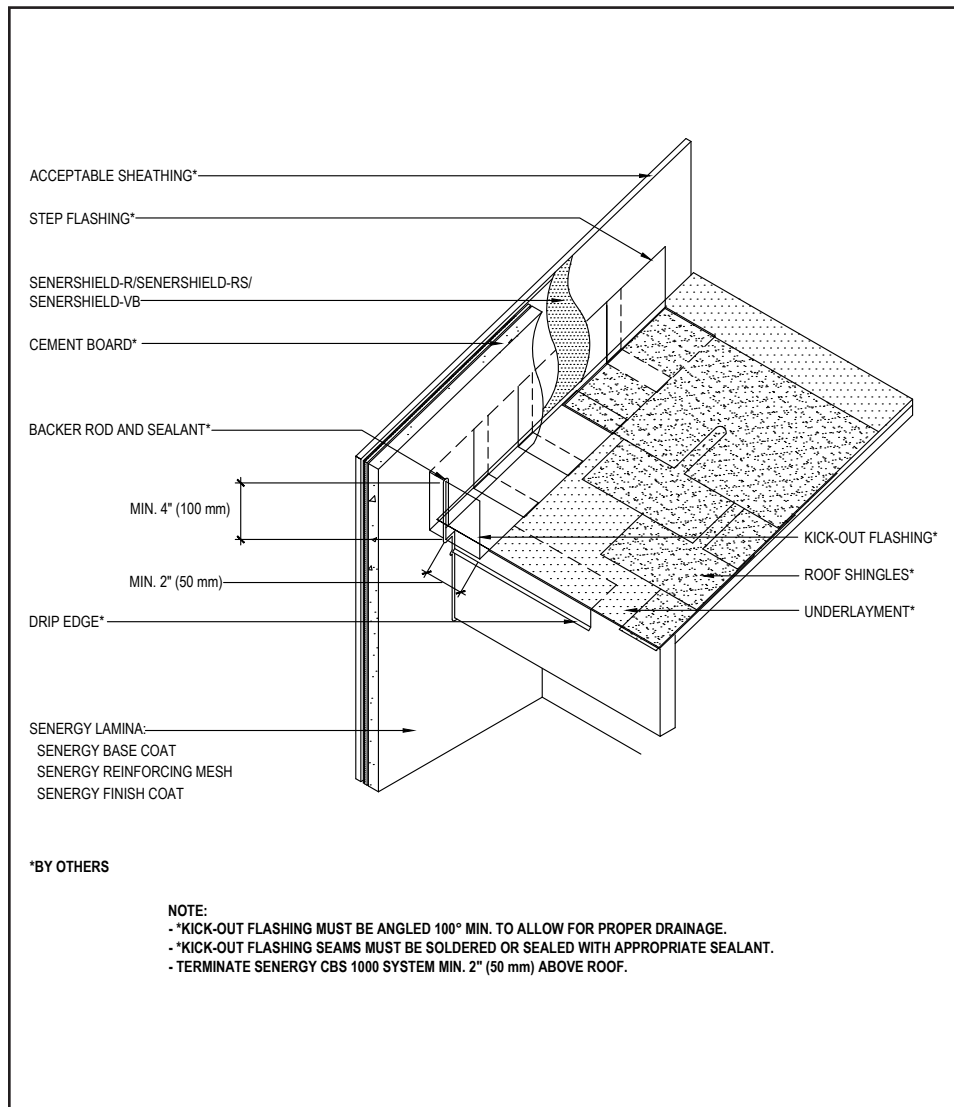
(*NOTE: BY OTHERS)

The details within are the latest recommendations and are represented in good faith by Sika Corporation US (hereinafter Sika). The details are subject to change without notice. Sika accepts no liability for the end use of the details. For conditions not shown, consult Sika for review of specific details.

- Install Sika materials in accordance with current installation instructions.
- Unsatisfactory conditions shall be reported to the General Contractor and corrected before the application of Sika products.

Cement Board Stucco (CBS) 1000

TYPICAL KICK-OUT FLASHING AT SLOPED ROOF



- Ensure a means for drainage is provided at system termination at roof.
- Terminate system a minimum of 2" (50 mm) above sloped roof.
- Ensure step flashing is a minimum of 2" (50 mm) behind system.
- Kick-out flashing shall be a minimum of 4" (102 mm) in height.

23 0524

(*NOTE: BY OTHERS)

The details within are the latest recommendations and are represented in good faith by Sika Corporation US (hereinafter Sika). The details are subject to change without notice. Sika accepts no liability for the end use of the details. For conditions not shown, consult Sika for review of specific details.

- Install Sika materials in accordance with current installation instructions.
- Unsatisfactory conditions shall be reported to the General Contractor and corrected before the application of Sika products.



LIMITED WARRANTY NOTICE

Prior to each use of any product of Sika Corporation, its subsidiaries or affiliates ("SIKA"), the user must always read and follow the warnings and instructions on the product's most current product label, Product Data Sheet and Safety Data Sheet which are available at usa.sika.com/senenergy or by calling our Technical Service Department at +1 (800) 589-1336.

Nothing contained in any SIKA literature or materials relieves the user of the obligation to read and follow the warnings and instructions for each SIKA product as set forth in the current product label, Product Data Sheet and Safety Data Sheet prior to use of the SIKA product.

SIKA warrants this product for one year from date of installation to be free from manufacturing defects and to meet the technical properties on the current Product Data Sheet if used as directed within the product's shelf life. User determines suitability of product for intended use and assumes all risks. User's and/or buyer's sole remedy shall be limited to the purchase price or replacement of this product exclusive of any labor costs. NO OTHER WARRANTIES EXPRESS OR IMPLIED SHALL APPLY INCLUDING ANY WARRANTY OF MERCHANTABILITY OR FITNESS FOR A PARTICULAR PURPOSE. SIKA SHALL NOT BE LIABLE UNDER ANY LEGAL THEORY FOR SPECIAL OR CONSEQUENTIAL DAMAGES. SIKA SHALL NOT BE RESPONSIBLE FOR THE USE OF THIS PRODUCT IN A MANNER TO INFRINGE ON ANY PATENT OR ANY OTHER INTELLECTUAL PROPERTY RIGHTS HELD BY OTHERS. Sale of SIKA products are subject to the Terms and Conditions of Sale which are available at usa.sika.com.

For the most current version of this literature, please visit our website at usa.sika.com/senergy.

Sika Corporation

201 Polito Avenue
Lyndhurst, NJ 07071 USA
Customer Service +1 (800) 433-9517
Technical Service +1 (800) 589-1336
usa.sika.com/senergy

Rev May 2024

BUILDING TRUST

