

***Senergy***<sup>®</sup>

**LIBRARY**

# RENEW RESTORATION PROGRAM

**BUILDING TRUST**



# SENERGY'S RENEW RESTORATION PROGRAM

---

As buildings age, they need care and maintenance to ensure that the products and systems used work together to provide the expected level of performance and protection. Restored buildings need to look impressive, manage heat, air and moisture effectively, function with existing structural elements, meet

evolving code requirements and do so in a cost-effective manner. The complexity and volume of information can be daunting. The Renew program leverages Sika's extensive resources and experience to provide a wide range of restoration solutions for a comprehensive building envelope solution.



*Randolph Riverfront Center, Alexandria, LA  
Before and after restoration.*



# WHY RENEW WITH SENERGY

## INCREASED DEMAND FOR SUSTAINABILITY

The urgency for **sustainability** and preservation of our natural resources grows daily. When a building is restored, we keep waste out of landfills and make responsible use of existing resources. Sika offers products and support for sustainable construction. Visit our website for easy access to LEED certifications, Red List Free product lists, and HPDs.

**Energy efficiency** is enhanced with improved protection against water and air infiltration, a prime contributor to diminished R-values. Adding Senershield fluid-applied air/water-resistive barrier and insulation can be used to control air and water movement through the building.

**Safety** is improved by assuring the structural integrity of the building and facade. Better seals also prevent the passage of air and moisture, reducing mold and mildew, and improving interior comfort for building occupants.

The **return on investment** is considerable, both financially and environmentally. The restored building becomes an attractive asset to the community, increasing its value and desirability.

Sika collaborates with design professionals and contractors to solve problems and bring decades of knowledge and experience to the project.

## RENEW SOLUTIONS

### FOR BUILDINGS OF ALL AGES

The Renew program begins with maintenance of buildings and provides progressively more intensive solutions that match the needs of aging structures or preferences of new

owners. The Renew program includes four stages, including Refresh, Repair, Overclad and Reclad to meet the building's needs through out its life cycle.



#### REFRESH

##### REFRESH

Aesthetic changes to a building can be accomplished quickly by recoating or refinishing an existing EIFS or Stucco project.

#### REPAIR

##### REPAIR

Clean and inspect the building, identify minor repairs to prevent larger issues in the future and extend the life of the cladding.

#### OVERCLAD

##### OVERCLAD

In some cases, an existing cladding can be directly applied over to be repurposed for a new owner, purpose, or design improvement.

#### RECLAD

##### RECLAD

Larger challenges with an existing cladding may require removal and recladding to address current problems and dramatically improve energy efficiency and design.

# RENEW SOLUTIONS

## REFRESH

**Aesthetic changes to a building can be accomplished quickly by recoating or refinishing an existing EIFS or Stucco project.**

Depending on the existing cladding, there are two methods for refreshing the building's appearance. This can provide a face lift to the exterior appearance and facilitate repurposing a building for new tenants.

- Coat over the existing finish with Senergy's high performance wall coatings.
- Refinish by applying a layer of skim coat with fiberglass reinforcement then finish over an existing cladding using Senergy Textured Finishes.

## REPAIR

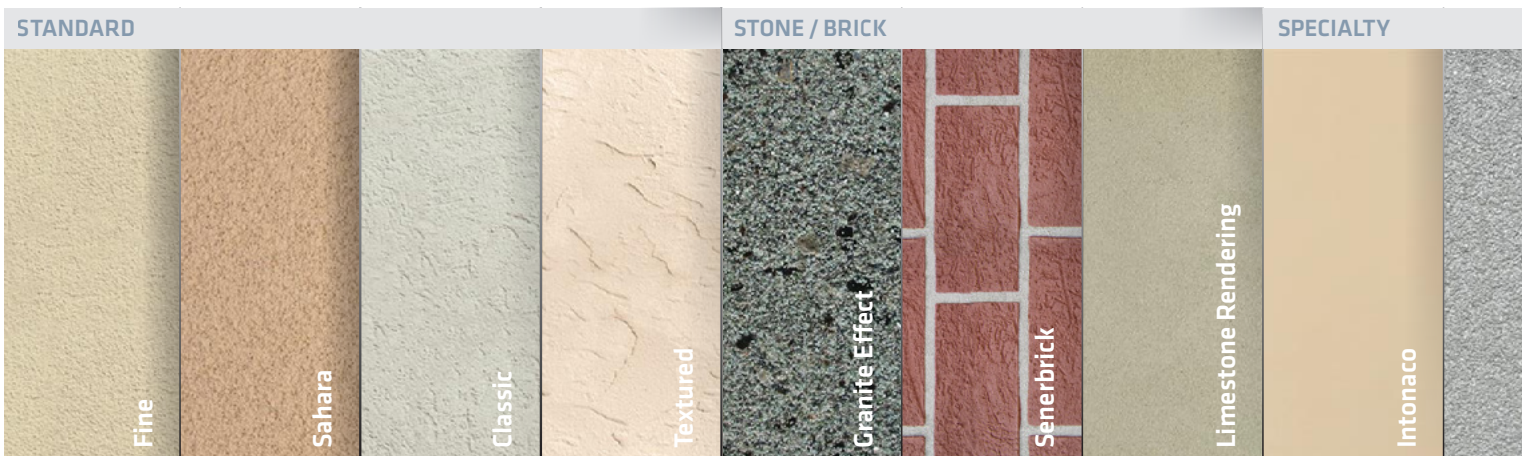
**Clean and inspect the building, identify minor repairs that need to be addressed to prevent larger issues in the future and extend the life of the cladding.**

Wear and damage to the building envelope is most acute when it leads to moisture intrusion. Replacing sealants and repairing damaged claddings can help eliminate the need for expensive remediations necessary after substantial damage has occurred.



## SENERGY FINISHES

ACHIEVE THE LOOK AND FEEL YOU WANT



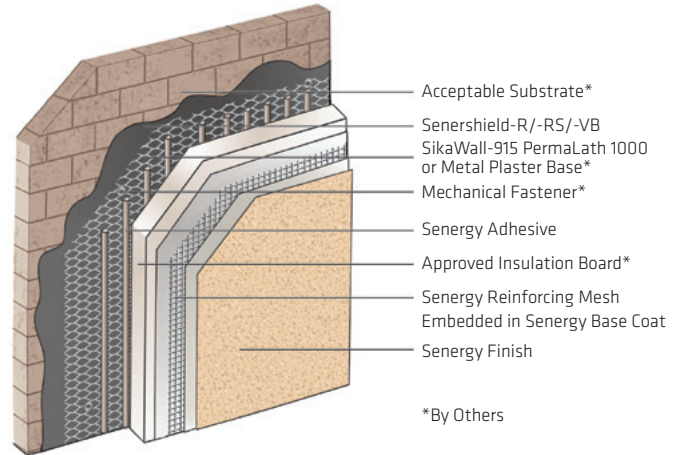
## OVERCLAD

**In some cases, the existing cladding can be directly applied over to be repurposed for a new owner or aesthetic.**

It is important to consider the building condition and project objectives when selecting and designing with a Senergy wall system. Where a mechanically-fastened cladding is required, Senergy's Adhered Mat Design is preferred for irregular substrates. Contact your local Sika Sales Representative to discuss your buildings needs.

**Senergy Adhered Mat Design** utilizes a non-metallic lath mechanically fastened to the inconsistent substrate. Adhered Mat Design reliably provide the highest level of wind load performance.

## SENERGY ADHERED MAT DESIGN



## RECLAD

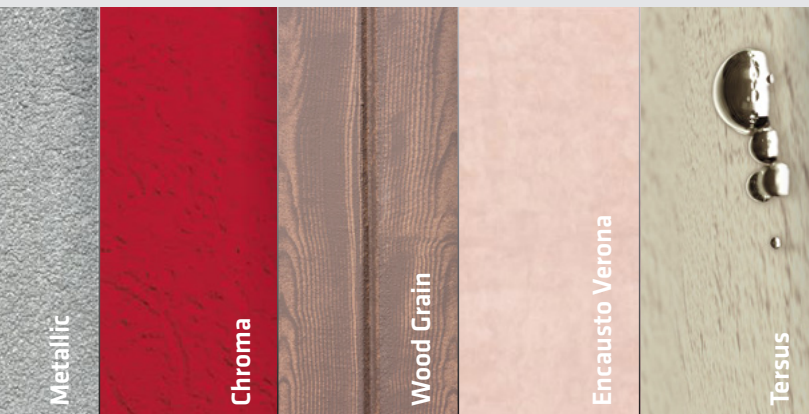
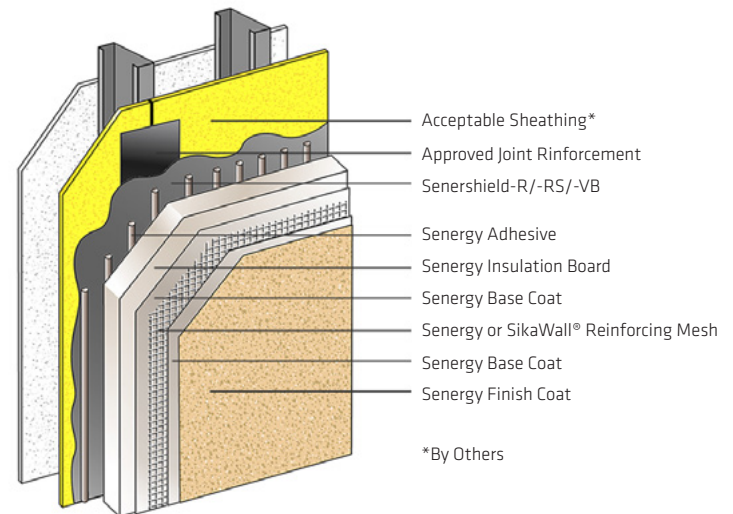
**Recladding is typically part of an overall plan to address multiple issues with an existing building**

Moisture damage, poor indoor air quality, diminished occupant comfort, degraded exterior appearance and high operating costs can come together to create a need for building recladding. Choose from Senergy's insulated and non insulated wall systems when recladding.

**Channeled Adhesive CI Design** wall system is simple and highly effective. Adhesively attached, the system includes continuous insulation, air/water-resistive barrier and drainage for effective heat, air and moisture control.

**Senerflex Vulcan NC** system features Rockwool Frontrock™ mineral wool continuous insulation, air/water-resistive barrier and drainage for option heat, air and moisture control with superior fire protection.

## CHANNELED ADHESIVE CI DESIGN



Scan to view our restoration procedures

### TECHNICAL SUPPORT

Consult our Technical Services team at +1 (800) 589-1336 for specific questions and recommendations or visit our website at [usa.sika.com/senergy](http://usa.sika.com/senergy), for additional information about products and systems.

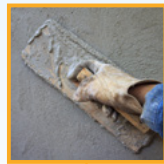
# TOTAL SIKA RESTORATION PRODUCT OFFERING

**AT SIKA WE ARE EXPERTS AT SOLVING THE COMPLEXITIES OF BUILDING RESTORATION** with solutions that stand the test of time. The Sika brand encompasses a line of proven products from concrete repair, waterproofing, corrosion mitigation, moisture protection, to exterior wall systems.



## **WALL COATINGS & WALL SYSTEMS**

Keeping surfaces beautiful and walls dry requires protection more powerful than the elements. Wall coatings and wall systems beautify and protect against moisture and carbonation.



## **CONCRETE REPAIR & STRENGTHENING**

The effects of corrosion or physical damage can shorten the life of a building. Long-lasting repair requires a sound repair strategy and the use of high-performance products.



## **JOINT SEALANTS & WATERPROOFING**

Moisture penetration is one of the most critical challenges facing buildings today. Joint sealants and waterproofing play a critical role in sealing and protecting your building against moisture intrusion.



## **BALCONIES & WALKWAY WATERPROOFING**

Balconies and parking garages represent some of the toughest challenges in protecting a building from moisture related damage. Proper protection requires an integrated system of materials that can be customized to meet diverse application requirements from speed to durability to aesthetic.



# SEALANT COMPATIBILITY

Sealants are a vital part of ensuring proper air and moisture management is achieved and not all sealants manufacturers are compatible with EIFS and stucco systems. Reduce complexity and ensure performance using Sika Sealants with your Senergy Wall System, one manufacturer and one warranty.



The following sealants are compatible with Senergy base coats and are acceptable for use on above grade application of Senergy Wall Systems and all Senergy Surfacing Systems:

- **Sikasil® WS-290 or WS-290 FPS**
- **Sikasil® WS-295 / WS-295 FPS\***
- **Sikaflex® 15 LM**  
(Sikaflex Primer-429 required)
- **Sikaflex® 2c NS EZ Mix / 2C EX Mix\***
- **Sikaflex® HY 150 & Sikaflex Primer-179**
- **Sikaflex® HY 100/ Sikaflex Primer-179**
- **Sikaflex® NP 2/ Sikaflex Primer-173**  
(for use with Stucco and CBS Systems only)
- **Sikaflex® NP 1/ Sikaflex Primer-173**  
(for use with Stucco and CBS Systems only)

**Contact your local sales representative for details on warranty terms and conditions.**

\*For perimeter seals around penetrations only. It is not intended to be used when sealing EIFS to EIFS

Note: SIKA SEALANTS MAY REQUIRE THE USE OF SIKA PRIMER BASED ON FIELD CONDITIONS AND FIELD BOND TESTING.

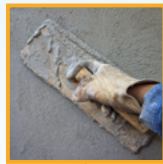
# TOTAL SIKA RESTORATION PRODUCT OFFERING

**AT SIKA WE ARE EXPERTS AT SOLVING THE COMPLEXITIES OF BUILDING RESTORATION** with solutions that stand the test of time. The Sika brand encompasses a line of proven products from concrete repair, waterproofing, corrosion mitigation, moisture protection, to exterior wall systems.



## **WALL COATINGS & WALL SYSTEMS**

Keeping surfaces beautiful and walls dry requires protection more powerful than the elements. Wall coatings and wall systems beautify and protect against moisture and carbonation.



## **CONCRETE REPAIR & STRENGTHENING**

The effects of corrosion or physical damage can shorten the life of a building. Long-lasting repair requires a sound repair strategy and the use of high-performance products.



## **JOINT SEALANTS & WATERPROOFING**

Moisture penetration is one of the most critical challenges facing buildings today. Joint sealants and waterproofing play a critical role in sealing and protecting your building against moisture intrusion.



## **BALCONIES & WALKWAY WATERPROOFING**

Balconies and parking garages represent some of the toughest challenges in protecting a building from moisture related damage. Proper protection requires an integrated system of materials that can be customized to meet diverse application requirements from speed to durability to aesthetic.





# SEALANT COMPATIBILITY

**SEALANTS ARE A VITAL PART OF ENSURING PROPER AIR AND MOISTURE MANAGEMENT IS ACHIEVED** and not all sealants manufacturers are compatible with EIFS and stucco systems. Reduce complexity and ensure performance using Sika Sealants with your Senergy Wall System, one manufacturer and one warranty.

The following sealants are compatible with Senergy base coats and are acceptable for use on above grade application of Senergy Wall Systems and all Senergy Surfacing Systems:

- **Sikasil® WS-290 or WS-290 FPS**
- **Sikasil® WS-295 / WS-295 FPS\***
- **Sikaflex® 15 LM**  
(Sikaflex Primer-429 required)
- **Sikaflex® 2c NS EZ Mix / 2C EX Mix\***
- **Sikaflex® HY 150 & Sikaflex Primer-179**
- **Sikaflex® HY 100/ Sikaflex Primer-179**
- **Sikaflex® NP 2/ Sikaflex Primer-173**  
(for use with Stucco and CBS Systems only)
- **Sikaflex® NP 1/ Sikaflex Primer-173**  
(for use with Stucco and CBS Systems only)

**Contact your local sales representative for details on warranty terms and conditions.**

\*For perimeter seals around penetrations only. It is not intended to be used when sealing EIFS to EIFS

Note: SIKA SEALANTS MAY REQUIRE THE USE OF SIKA PRIMER BASED ON FIELD CONDITIONS AND FIELD BOND TESTING.



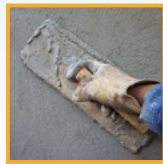
# TOTAL SIKA RESTORATION PRODUCT OFFERING

**AT SIKA WE ARE EXPERTS AT SOLVING THE COMPLEXITIES OF BUILDING RESTORATION** with solutions that stand the test of time. The Sika brand encompasses a line of proven products from concrete repair, waterproofing, corrosion mitigation, moisture protection, to exterior wall systems.



## **WALL COATINGS & WALL SYSTEMS**

Keeping surfaces beautiful and walls dry requires protection more powerful than the elements. Wall coatings and wall systems beautify and protect against moisture and carbonation.



## **CONCRETE REPAIR & STRENGTHENING**

The effects of corrosion or physical damage can shorten the life of a building. Long-lasting repair requires a sound repair strategy and the use of high-performance products.



## **JOINT SEALANTS & WATERPROOFING**

Moisture penetration is one of the most critical challenges facing buildings today. Joint sealants and waterproofing play a critical role in sealing and protecting your building against moisture intrusion.



## **BALCONIES & WALKWAY WATERPROOFING**

Balconies and parking garages represent some of the toughest challenges in protecting a building from moisture related damage. Proper protection requires an integrated system of materials that can be customized to meet diverse application requirements from speed to durability to aesthetic.



# SEALANT COMPATIBILITY

**SEALANTS ARE A VITAL PART OF ENSURING PROPER AIR AND MOISTURE MANAGEMENT IS ACHIEVED** and not all sealants manufacturers are compatible with EIFS and stucco systems. Reduce complexity and ensure performance using Sika Sealants with your Senergy Wall System, one manufacturer and one warranty.

The following sealants are compatible with Senergy base coats and are acceptable for use on above grade application of Senergy Wall Systems and all Senergy Surfacing Systems:

- **Sikasil® WS-290 or WS-290 FPS**
- **Sikasil® WS-295 / WS-295 FPS\***
- **Sikaflex® 15 LM**  
(Sikaflex Primer-429 required)
- **Sikaflex® 2c NS EZ Mix / 2C EX Mix\***
- **Sikaflex® HY 150 & Sikaflex Primer-179**
- **Sikaflex® HY 100/ Sikaflex Primer-179**
- **Sikaflex® NP 2/ Sikaflex Primer-173**  
(for use with Stucco and CBS Systems only)
- **Sikaflex® NP 1/ Sikaflex Primer-173**  
(for use with Stucco and CBS Systems only)

**Contact your local sales representative for details on warranty terms and conditions.**

\*For perimeter seals around penetrations only. It is not intended to be used when sealing EIFS to EIFS

Note: SIKA SEALANTS MAY REQUIRE THE USE OF SIKA PRIMER BASED ON FIELD CONDITIONS AND FIELD BOND TESTING.





Our most current General Sales Conditions shall apply.  
Please consult the Data Sheet prior to any use and processing

© 2024 Sika Corporation, 14000833 rev 03/2024

**Sika Corporation**

201 Polito Avenue  
Lyndhurst, NJ 07071 USA  
Customer Service (800) 433-9517  
Technical Service (800) 243-6739  
[usa.sika.com/senergy](http://usa.sika.com/senergy)

**BUILDING TRUST**

