

TECHNICAL BULLETIN

Channeled Adhesive FB Installation Guide

Fireblocking Mineral Wool Lamella Preparation and Installation

INTRODUCTION

New York City's 2022 Building Code (BC) introduced new fireblocking requirements. Under the new code, non-combustible fireblocking is now required even when wall assemblies meet NFPA 285 standards. This impacts a wide range of cladding systems, including EIFS with foam plastic insulation, MCM, HPL, FRP, and any wall covering that incorporates combustible materials.

FIREBLOCKING MATERIAL

The Channeled Adhesive FB Design system incorporates fireblocking consisting of 4" high mineral wool lamella cut from 4" thick 8.5 lbs./ft³ type IVA non-combustible mineral wool boards.

FIREBLOCKING INSTALLATION LOCATIONS

- Around wall openings, such as windows, doors, vents, pipes and other similar openings.
- Aligned with slab edges for a height of not less than 8 inches and at maximum intervals of 20 feet vertically.
- Between different occupancy groups, vertically or horizontally as applicable.
- At intersections with interior fire-resistance-rated demising walls.
- Fireblocking locations shall be depicted on the project drawings by the project designer.

CUTTING MINERAL WOOL LAMELLA

Recommended Tools

- Insulation knife (long, serrated blade preferred)
- Fine-tooth hand saw or bread knife (for thicker lamella)
- Straightedge or metal ruler
- Measuring tape and marker

NOTE: Power tools are not recommended due to excessive fiber dust and rough edges.

*Ensure proper PPE is used when handling and cutting mineral wool.

Cutting Procedure

The thickness of the mineral wool lamella is based on the specified thickness of the surrounding EPS.



1. Place the 4" thick 2'x4' mineral wool board on a flat surface. Use a straightedge and marker to draw a clean, straight cut line on the face of the lamella across the 4' dimension of the board, matching the thickness of the EPS.

For example, if the EPS insulation thickness is 2", the marked line is 2" from the edge of the mineral wool board.

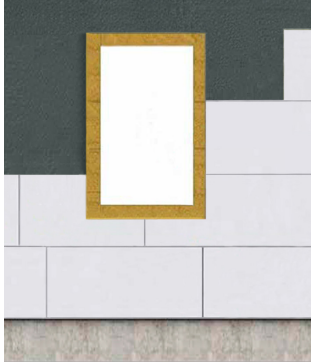
2. Make the cut

- Hold the straightedge firmly along the cut line.
- Use long, steady strokes with the knife or saw.
- To cut through the fibers cleanly, do not force the blade.
- The cut edge should be square and clean. Trim loose fibers if necessary to ensure tight joints.

FIREBLOCKING INSTALLATION

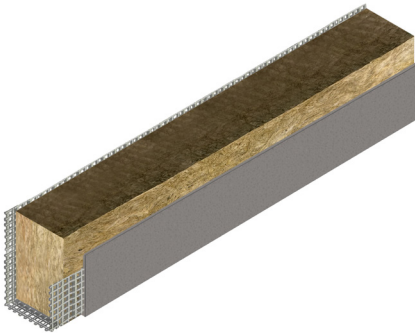
Reference Senergy Channeled Adhesive FB Design published details.

Around Wall Opening



4" wide Lamella is required on all sides. The cut edge of the mineral wool must be installed against the wall surface.

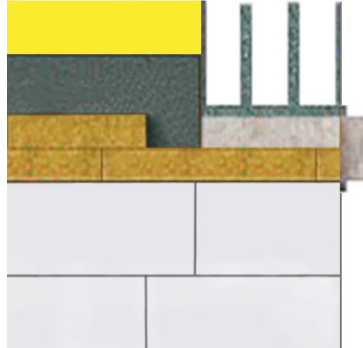
1. Pre-backwrap the mineral wool lamella insulation. Extend reinforcing mesh a minimum of 2 1/2" onto the back of the insulation (cut face).



2. Apply mixed Senergy adhesive/base coat to the entire surface of the cut edge of mineral wool lamella using a stainless-steel trowel with 1/2"x 1/2" notches spaced 2" apart. Ribbons of adhesive applied to mineral wool lamella insulation must be vertical when the lamella is applied to the substrate.
3. Immediately set lamella into place and apply pressure over entire surface to ensure positive uniform contact and high initial grab. Do not slide into place. Do not allow base coat to dry prior to installing.
4. Tightly butt all joints and ensure overall flush level surface. Fill 1/16" and larger gaps between lamella with slivers of mineral wool.
5. Allow application of lamella to dry (normally 8 to 10 hours) prior to application of base coat/reinforcing mesh.
6. If necessary, lightly rasp the lamella to be flush with the surrounding EPS insulation boards.

7. Reinforce corners of openings with 9"x12" diagonal strips of Senergy Flexguard 4 reinforcing mesh.
8. Follow standard application instructions for the remainder of the system installation.

At Slab Edge (Floorlines)



Apply two courses of 4" mineral wool lamella at the floor slab level to achieve a minimum height of 8". Ensure the courses are applied in a running bond pattern. The cut edge of the mineral wool must be installed against the wall surface.

1. Pre-backwrap the bottom piece of the lamella insulation as necessary at drainage location or expansion joints. Extend reinforcing mesh a minimum of 2 1/2" onto the back of the insulation (cut face).
2. Apply mixed Senergy adhesive/base coat to the entire surface of the cut edge of mineral wool lamella using a stainless-steel trowel with 1/2"x 1/2" notches spaced 2" apart. Ribbons of adhesive applied to mineral wool lamella insulation must be vertical when the lamella is applied to the substrate.
3. Immediately set lamella pieces into place and apply pressure over entire surface to ensure positive uniform contact and high initial grab. Do not slide into place. Do not allow base coat to dry prior to installing.
4. Tightly butt all joints and ensure overall flush level surface. Fill 1/16" and larger gaps between lamella with slivers of mineral wool.
5. Allow application of lamella to dry (normally 8 to 10 hours) prior to application of base coat/reinforcing mesh.
6. If necessary, lightly rasp the lamella to be flush with the surrounding EPS insulation boards.
7. Follow standard application instructions for the remainder of the system installation.

LIMITED WARRANTY NOTICE

Prior to each use of any product of Sika Corporation, its subsidiaries or affiliates (“SIKA”), the user must always read and follow the warnings and instructions on the product’s most current product label, Product Data Sheet and Safety Data Sheet which are available at usa.sika.com/Senergy or by calling SIKA’s Technical Service Department at 1-800-226-2424. Nothing contained in any SIKA literature or materials relieves the user of the obligation to read and follow the warnings and instructions for each SIKA product as set forth in the current product label, Product Data Sheet and Safety Data Sheet prior to use of the SIKA product.

SIKA warrants this product for one year from date of installation to be free from manufacturing defects and to meet the technical properties on the current Product Data Sheet if used as directed within the product’s shelf life. User determines suitability of product for intended use and assumes all risks. User’s and/or buyer’s sole remedy shall be limited to the purchase price or replacement of this product exclusive of any labor costs.

NO OTHER WARRANTIES EXPRESS OR IMPLIED SHALL APPLY INCLUDING ANY WARRANTY OF MERCHANTABILITY OR FITNESS FOR A PARTICULAR PURPOSE. SIKA SHALL NOT BE LIABLE UNDER ANY LEGAL THEORY FOR SPECIAL OR CONSEQUENTIAL DAMAGES. SIKA SHALL NOT BE RESPONSIBLE FOR THE USE OF THIS PRODUCT IN A MANNER TO INFRINGE ON ANY PATENT OR ANY OTHER INTELLECTUAL PROPERTY RIGHTS HELD BY OTHERS.