

Sika Armatec 110

Application Instructions



Sika Armatec 110 EpoCem

Bonding Agent and Reinforcement Protection

Sika Armatec 110 EpoCem is a 3-component, solvent-free, epoxy-modified, cementitious product specifically formulated as a bonding agent and an anti-corrosion coating



Sika Armatec 110 EpoCem

- ▲ Where to use:
- ▲ As a anti-corrosion coating for reinforcing steel in concrete restoration
- ▲ As Added protection to reinforcing steel in areas of thin concrete cover
- ▲ As a bonding agent for repairs to concrete and steel
- ▲ As a bonding agent for placing fresh, plastic concrete to existing hardened concrete



Sika Armatec 110 EpoCem

▲ Coverage:

Bonding Agent: minimum on smooth,
even substrate 80 sq.ft./ gal
(@20 mils)

Reinforcement Protection: 40 sq.ft./gal
(@20 mils – 2 coat application)



Sika Armatec 110 EpoCem

▲ Packaging:

3.5 Gal Unit:

“A” Comp: 47.6 fl. Oz.

“B” Comp: 122.1 fl. Oz.

“C” Comp: multi-wall bag

1.65 Gal Unit:

“A” Comp: 22.7 fl. Oz.

“B” Comp: 57.6 fl. Oz.

“C” Comp: 4 Bags @ 5.5 lbs ea.



Surface Preparation

Cementitious Substrates:

- Should be cleaned and prepared in accordance with the requirements specified by the overlay or repair material by blast cleaning or equivalent mechanical means.
- Substrate must be saturated surface dry (SSD) with no standing water.



Surface Preparation

- ▲ **Steel:**
 - Remove corrosion and contaminants from exposed steel.
 - Surface should be cleaned and prepared thoroughly by blast cleaning.
 - Exposed steel should be cleaned to white steel.
 - Determine section loss, splice where more than 15-25% loss as directed the Engineer.
 - If half of the diameter is exposed, chip behind bar, 1/2" minimum for mortar only.



SikaArmatec 110 EpoCem



1.65 Gal Unit



Comes packaged with 4 bags @ 5.5 lbs. excellent for smaller batches.



Sika Corporation

Armatec 110 EpoCem- Tools

1.65 Gal Unit

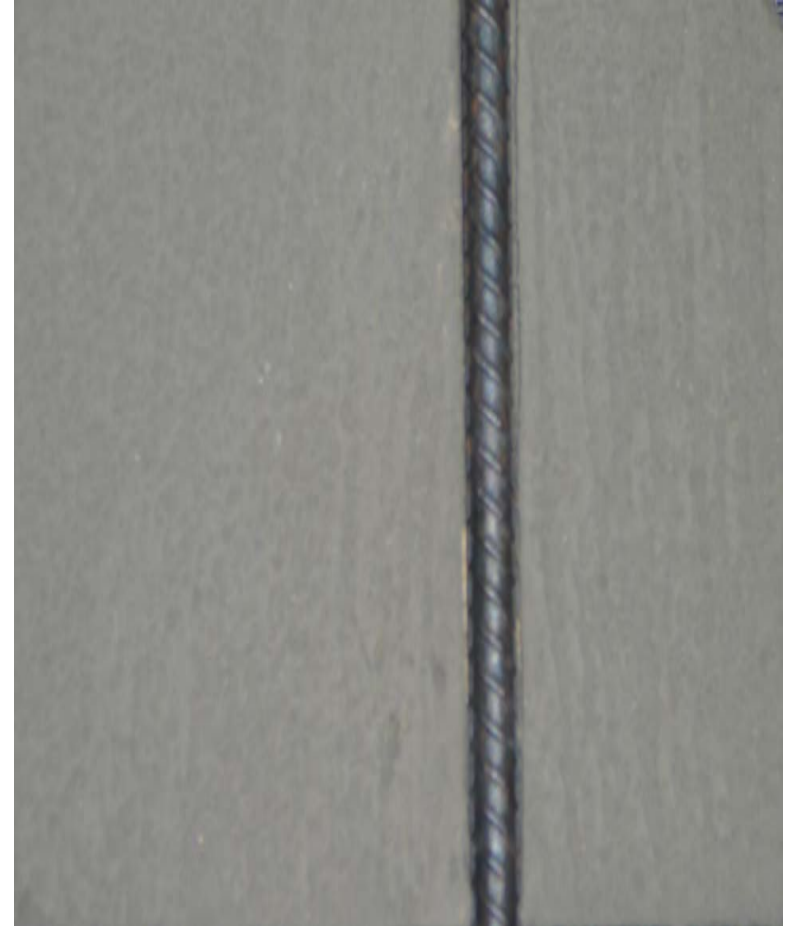
Comes packaged with 4 bags @ 5.5 lbs. excellent for smaller batches.



Sika Corporation

Steel Preparation

Steel should be cleaned and prepared by blast cleaning



Armatec 110 1.65 Gal Unit

A & B Comp. proportions are clearly marked on the side of the plastic jugs for easy mixing.



Mixing

Shake contents of
A & B Components.

For 3.5 Gal Unit:

Pour entire amount of
both A & B
Component into a
clean dry pail.

For 1.65 Gal Unit:

Proportion according
to markings on side of
jugs



Mixing

Mix liquid thoroughly for 30 seconds with a Sika paddle (jiffy mixer) on a low speed drill 400-600 rpm drill.



Mixing

Slowly add entire “C” Component while continuing to mix for 3 minutes until blend is uniform and free of lumps.



Sika Corporation



Mixing

While mixing for 3 minutes stop to scrape down the sides to insure all material is fully mixed



Corrosion Protection Only:

Apply at 80 sq.ft./gal
(20 mils).

Take special care to properly coat the underside of the totally exposed steel. Allow Coating to dry 2-3 hours @ 73 degrees F.



Corrosion Protection Only:

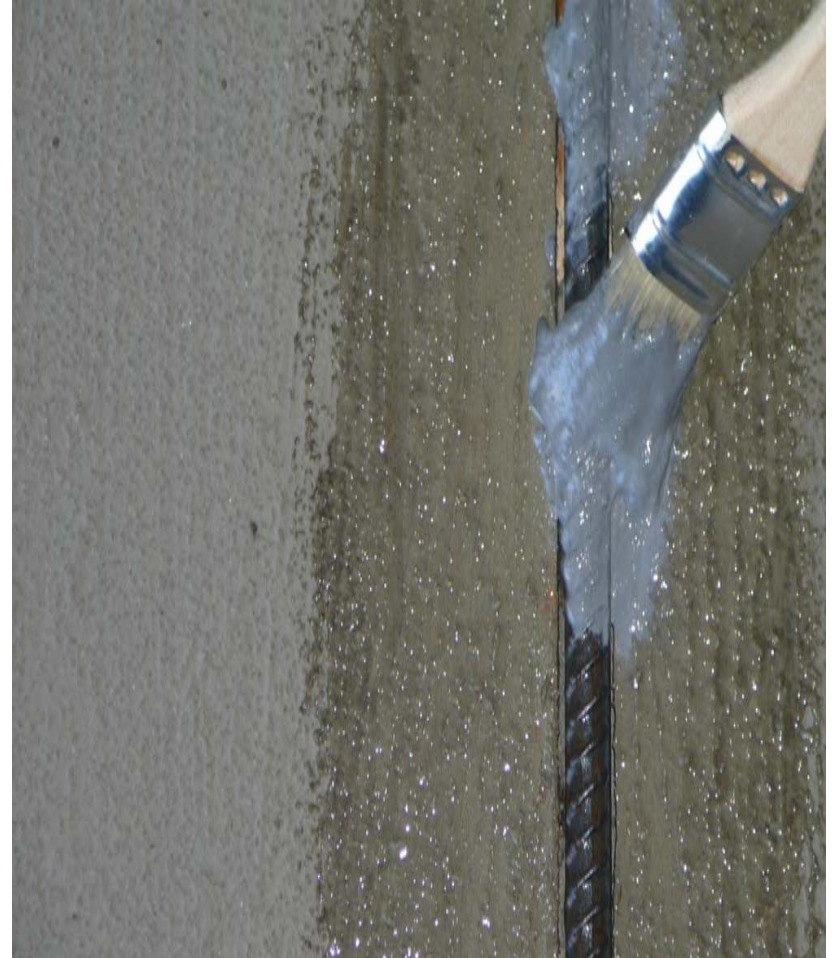
Apply second coat at same coverage after waiting 2-3 hour for first coat to dry.



Bonding Agent & Rebar Protection

First Coat: Apply at 80 sq.ft./gal (20 mils).

Take special care to properly coat the underside of the totally exposed steel. Allow Coating to dry 2-3 hours @ 73 degrees F.

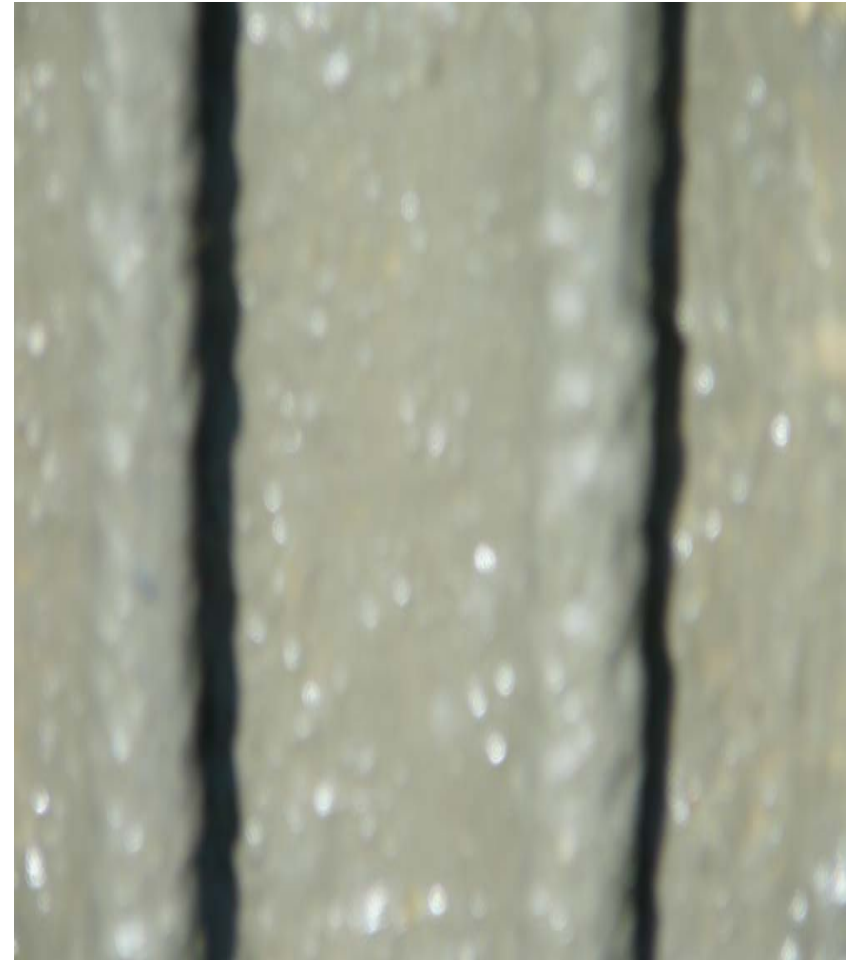


Bonding Agent & Rebar Protection

Second Coat:

Apply at 80 sq.ft./gal (20 mils) on both steel and concrete substrate. Proceed to applying repair mortar “wet-on-wet”.

If Armatec 110 is dry apply again prior to placing repair mortar.



Sika Armatec 110 EpoCem

Sika Technical Data Sheets can be obtained via

www.sikaconstruction.com

Refer to data sheets for specific information on each Sika product.

