

Finescreen 1000 with SikaWall-1000 MaxGrip Veneer Adhesive

Highly impact resistant, water-drainage wall system incorporating a cement board core, reinforced base coat featuring MaxGrip Veneer Adhesive, specially formulated high-strength setting bed mortar used to adhere natural and manufactured stone, tile, and thin brick veneer.

SYSTEM DESCRIPTION

LaHabra Finescreen with MaxGrip Veneer Adhesive is a high-impact, water-drainage wall cladding system that incorporates Senershield fluid applied air water-resistive barrier and features a cement board (ASTM C1325) core installed with a polymer-modified base coat, fiberglass reinforcing mesh, and MaxGrip Veneer Adhesive used to adhere natural and manufactured stone, tile, and thin brick veneer. Finescreen 1000 with MaxGrip Veneer Adhesive system provides extremely high impact and puncture resistance and increased dimensional stability without sacrificing design freedom.

DESIGN CONSIDERATIONS

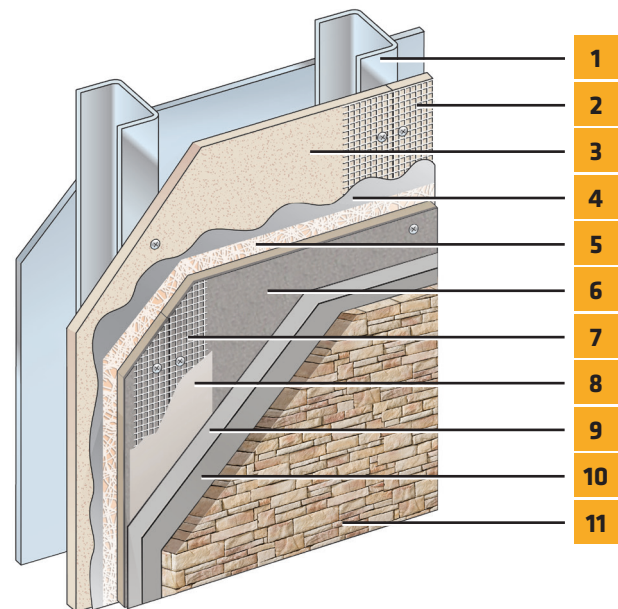
- Maximum substrate design deflection is L/360. Substrate must be level within 1/4" in 10' (6 mm in 3 m).
- Acceptable Sheathing: PermaBase® Cement Board and other cement boards conforming with ASTM C1325 (Type A - exterior); poured concrete/unit masonry; ASTM C1177 type sheathings, including Weather Defense™ Platinum sheathing, GreenGlass® sheathing, eXPTM sheathing, GlasRoc® sheathing, Securock™ glass-mat sheathing, and DensGlass® exterior sheathing; DensElement (sheathing only), gypsum sheathing (ASTM C79/C1396); Exposure I or exterior plywood (Grade C/D or better); or Exposure I OSB; Huber Zip (sheathing only).
- Cement board must satisfy ASTM C1325 Type A Exterior, minimum 1/2".
- Expansion joints are required in the system where they exist in the substrate, where the system adjoins dissimilar construction, at changes in substrates, at floor lines in multilevel wood frame construction, and where movement is anticipated.
- Reference system specification for testing information.

USES

For exterior walls in new or retrofit commercial, institutional and residential construction such as hotels, hospitals, retail, schools, multi-family apartments and condominiums, and government facilities.

MATERIAL SUBSTITUTION

Material substitution will adversely affect system performance and will void all warranty coverage unless approved in writing by Sika Facades Technical Service Team.



1. Framing*
2. Acceptable Joint Reinforcement: SikaWall MaxFlash, SikaWall Flash Seal NP or SikaWall Sheathing Fabric embedded in Finestop RA/RS/VB
3. Acceptable Sheathing*
4. Finestop RA/RS/VB
5. SikaWall Drainage Mat
6. Cement Board*
7. SikaWall Self Adhering Mesh Tape
8. LaHabra Base Coat
9. Skim coat of MaxGrip Veneer Adhesive
10. MaxGrip Veneer Adhesive
11. Adhered Veneer*

*By Others

Finescreen 1000 with MaxGrip Veneer Adhesive

LIMITATIONS

- Use only for above grade vertical walls
- Additives are not permitted for any product unless approved in writing by Sika Facades Technical Service Team.
- All products must be installed at minimum 40 °F (4 °C) ambient and substrate temperatures unless otherwise noted on specific Product Data Sheets.
- Protect all work from precipitation for at least 24-hours after application.
- All products must be stored in accordance with specific instructions on relevant Product Data Sheets.
- All substrates must be clean, dry and sound without planar irregularities greater than 1/4" per 10' (6 mm per 3 m).

WARRANTY

Prior to each use of any product of Sika Corporation, its subsidiaries or affiliates ("SIKA"), the user must always read and follow the warnings and instructions on the product's most current product label, Product Data Sheet and Safety Data Sheet which are available at usa.sika.com/lahabra or by calling SIKAFACADES' Technical Service Department at 1-800-589-1336. Nothing contained in any SIKAFACADES literature or materials relieves the user of the obligation to read and follow the warnings and instructions for each SIKAFACADES product as set forth in the current product label, Product Data Sheet and Safety Data Sheet prior to use of the SIKAFACADES product.

SIKAFACADES warrants this product for one year from date of installation to be free from manufacturing defects and to meet the technical properties on the current Product Data Sheet if used as directed within the product's shelf life. User determines suitability of product for intended use and assumes all risks. User's and/or buyer's sole remedy shall be limited to the purchase price or replacement of this product exclusive of any labor costs. NO OTHER WARRANTIES EXPRESS OR IMPLIED SHALL APPLY INCLUDING ANY WARRANTY OF MERCHANTABILITY OR FITNESS FOR A PARTICULAR PURPOSE. SIKAFACADES SHALL NOT BE LIABLE UNDER ANY LEGAL THEORY FOR SPECIAL OR CONSEQUENTIAL DAMAGES. SIKAFACADES SHALL NOT BE RESPONSIBLE FOR THE USE OF THIS PRODUCT IN A MANNER TO INFRINGE ON ANY PATENT OR ANY OTHER INTELLECTUAL PROPERTY RIGHTS HELD BY OTHERS. Sale of SIKAFACADES products are subject to the Terms and Conditions of Sale which are available at usa.sika.com.

Sika Corporation

201 Polito Avenue
Lyndhurst, NJ 07071 USA
Customer Service +1 (800) 433-9517
Technical Service +1 (800) 589-1336
usa.sika.com/lahabra

Rev April 2024

BUILDING TRUST

