

SYSTEM DATA SHEET

PAREX® WaterMaster GX

Grooved Continuous Insulation Water-Drainage Exterior Insulation and Finish System

PRODUCT DESCRIPTION

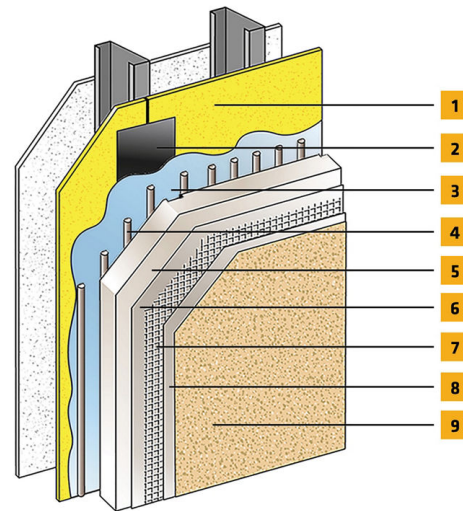
PAREX® WaterMaster GX is a continuously insulated water drained EIFS. It features a Parex WeatherSeal Spray and Roll-On fluid-applied air/water-resistive barrier, vertical ribbons of adhesive, and channeled insulation board, mechanically attached strip of SikaWall-9460 Drainage Mat at horizontal drainage terminations optional SikaWall Hi-Impact mesh applications and a wide range of finish options.

USES

PAREX® WaterMaster GX may be used in fire-resistance-rated construction and in any construction type (IBC Types I through V), when installed in accordance with Sika Facades instructions.

CHARACTERISTICS / ADVANTAGES

- For use with non-combustible construction types
- For use on fire resisted rated walls
- Continuous Insulation



1. Acceptable Sheathing*
2. SikaWall Joint Treatment
3. Parex Weatherseal
4. Parex Adhesive
5. Parex Channeled Insulation Board
6. Parex Base Coat
7. SikaWall Reinforcing Mesh
8. Parex Base Coat
9. Parex Finish Coat

*By Others

SYSTEM INFORMATION

Compatibility	Material substitutions will adversely affect system performance and will void all warranty coverage unless approved in writing by Sika Facades Technical Services.	
System Performance	Document	Description
	ICC-ES ESR 2562	Complies with IBC and IRC
	ASTM E2568 / AC 235	Complies with requirements
	ASTM E119	Does not detract from fire-resistance rating of base wall
	ICC-ES ESR-2045 (Parex® WeatherSeal SRO)	Air/water-resistive barrier
	NFPA 285	Meets requirements for use on noncombustible, construction types

APPLICATION INFORMATION

Substrates

Acceptable Substrates:

Glass Mat Gypsum Sheathing
Gypsum Sheathing
Exposure 1 OSB
Cement Board Sheathing
Concrete & Concrete Masonry
Exposure 1 or Exterior Plywood

BASIS OF PRODUCT DATA

Results may differ based upon statistical variations depending upon mixing methods and equipment, temperature, application methods, test methods, actual site conditions and curing conditions.

AVAILABILITY/WARRANTY

Complies with IBC & IRC requirements for Exterior Insulation and Finish Systems (EIFS) and EIFS with Drainage.

LIMITATIONS

- Users must read the most current Product Data Sheets for each system component before using any products and follow all application instructions and cautions.
- For use on above grade vertical walls. System must terminate a minimum of 6" (152 mm) above grade.
- Additives are not permitted for any product unless approved in writing by Sika Facades Technical Services.
- All products must be installed at minimum 40 °F (4 °C) ambient and substrate temperatures unless otherwise noted on specific Product Data Sheets.
- Protect all work from precipitation for at least 24-hours after application.
- This system is not designed for horizontal applications. Always maintain a minimum slope of 1:2 up to a maximum width of 12".

- All substrates must be clean, dry and sound without planar irregularities greater than 1/4" per 10' (6 mm per 3 m).
- Use of SikaWall Strong 15 or Ultra HI 20 Reinforcing Mesh is at ground floor and on other locations where high traffic is expected is recommended.
- Contact Sika Facades' Technical Service Department at 1-800-226-2424 for additional information.

ENVIRONMENTAL, HEALTH AND SAFETY

For further information and advice regarding transportation, handling, storage and disposal of chemical products, user should refer to the actual Safety Data Sheets containing physical, environmental, toxicological and other safety related data. User must read the current actual Safety Data Sheets before using any products. In case of an emergency, call CHEMTREC at 1-800-424-9300, International 703-527-3887.

LEGAL DISCLAIMER

- KEEP CONTAINER TIGHTLY CLOSED
- KEEP OUT OF REACH OF CHILDREN
- NOT FOR INTERNAL CONSUMPTION
- FOR INDUSTRIAL USE ONLY
- FOR PROFESSIONAL USE ONLY

Prior to each use of any product of Sika Corporation, its subsidiaries or affiliates ("SIKA"), the user must always

read and follow the warnings and instructions on the product's most current product label, Product Data Sheet and Safety Data Sheet which are available at usa.sika.com or by calling SIKA's Technical Service Department at 1-800-933-7452. Nothing contained in any SIKA literature or materials relieves the user of the obligation to read and follow the warnings and instructions for each SIKA product as set forth in the current product label, Product Data Sheet and Safety Data Sheet prior to use of the SIKA product.

Terms and Conditions of Sale which are available at usa.sika.com.

SIKA warrants this product for one year from date of installation to be free from manufacturing defects and to meet the technical properties on the current Product Data Sheet if used as directed within the product's shelf life. User determines suitability of product for intended use and assumes all risks. User's and/or buyer's sole remedy shall be limited to the purchase price or replacement of this product exclusive of any labor costs.

NO OTHER WARRANTIES EXPRESS OR IMPLIED SHALL APPLY INCLUDING ANY WARRANTY OF MERCHANTABILITY OR FITNESS FOR A PARTICULAR PURPOSE. SIKA SHALL NOT BE LIABLE UNDER ANY LEGAL THEORY FOR SPECIAL OR CONSEQUENTIAL DAMAGES. SIKA SHALL NOT BE RESPONSIBLE FOR THE USE OF THIS PRODUCT IN A MANNER TO INFRINGE ON ANY PATENT OR ANY OTHER INTELLECTUAL PROPERTY RIGHTS HELD BY OTHERS.

Sale of SIKA products are subject to the Terms and Conditions of Sale which are available at <https://usa.sika.com/en/group/SikaCorp/termsandconditions.html> or by calling 1-800-933-7452.

SIKA warrants this product for one year from date of installation to be free from manufacturing defects and to meet the technical properties on the current Product Data Sheet if used as directed within the product's shelf life. User determines suitability of product for intended use and assumes all risks. User's and/or buyer's sole remedy shall be limited to the purchase price or replacement of this product exclusive of any labor costs.

NO OTHER WARRANTIES EXPRESS OR IMPLIED SHALL APPLY INCLUDING ANY WARRANTY OF MERCHANTABILITY OR FITNESS FOR A PARTICULAR PURPOSE. SIKA SHALL NOT BE LIABLE UNDER ANY LEGAL THEORY FOR SPECIAL OR CONSEQUENTIAL DAMAGES. SIKA SHALL NOT BE RESPONSIBLE FOR THE USE OF THIS PRODUCT IN A MANNER TO INFRINGE ON ANY PATENT OR ANY OTHER INTELLECTUAL PROPERTY RIGHTS HELD BY OTHERS. Sale of SIKA products are subject to the

Sika Corporation

201 Polito Avenue
Lyndhurst, NJ 07071
Phone: +1-800-933-7452
Fax: +1-201-933-6225
usa.sika.com



System Data Sheet
PAREX® WaterMaster GX
June 2025, Version 01.01
021830950000242762

PAREXWaterMasterGX-en-US-(06-2025)-1-1.pdf

