



Airport Infrastructure - The Sky is the Limit

AGENDA



SIKA INFRASTRUCTURE

MARKET OVERVIEW

ROADSIDE APPLICATIONS

AIRSIDE APPLICATIONS

SIKA SOLUTIONS

Q & A

Panel



Heather Gifford
Product Manager



Scott DiStefano
Director Product
Manager



Bobby Scarpitto
Regional Sales
Manager



SIKA INFRASTRUCTURE AT A GLANCE

SIKA INFRASTRUCTURE

OUR STORY

2016 – Sika creates
Infrastructure division and
begins servicing DOTs



Concrete Repair

Structural Strengthening

Coatings/ Sealants

Concrete Protection

2017 & 2023 – Emseal and
Watson Bowman Acme
expansion joint solutions
added to Sika portfolio



Emseal Wabo®

Expansion Joints

Concrete Repair

Structural Strengthening

Coatings/ Sealants

Concrete Protection

2024 – Kwik Bond Polymers
joins Sika infrastructure family



KWIKBOND
POLYMERS
Emseal Wabo®

Polyester Overlays

Expansion Joints

Concrete Repair

Structural Strengthening

Coatings/ Sealants

Concrete Protection

2025 – Sika Infrastructure
enhances Tunnel portfolio with
the addition of King brand



KING

KWIKBOND
POLYMERS

Emseal Wabo®

Shotcrete

Polyester Overlays

Expansion Joints

Concrete Repair

Structural Strengthening

Coatings/ Sealants

Concrete Protection

Why INFRASTRUCTURE ?

The ultimate resource for all your project solutions



Bridge



Tunnel



Waste Water/
Water Treatment



Airports



Transit



Pedestrian

MARKET OVERVIEW

ASSESSMENT OF AMERICA'S AIRPORT INFRASTRUCTURE

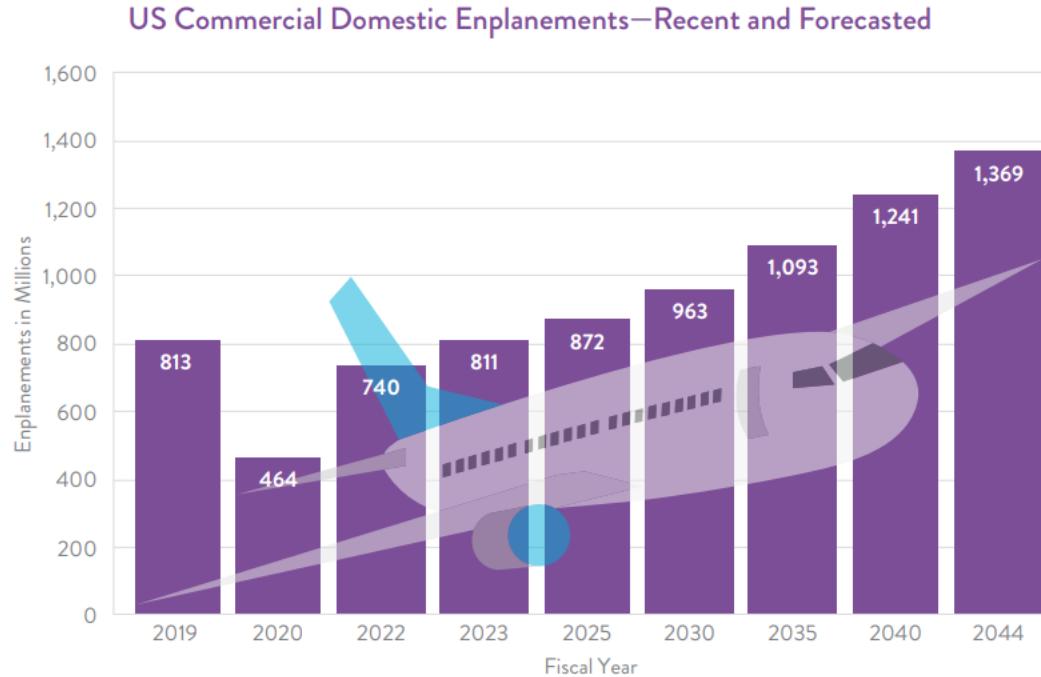


Aviation



Source: 2025 Report Card For America's Infrastructure ASCE's 2025 Infrastructure Report Card

AIR TRAFFIC DEMANDS



CAPACITY AND CONDITIONS

2028



11 at Capacity

2033



14 at Capacity

13 More at Risk

Source: National Plan of Integrated Airport Systems 2025-2029

National Capacity Outlook

AIRPORT	2028	2033	AIRPORT	2028	2033
Atlanta			Los Angeles		
Boston			Laguardia New York		
Baltimore Washington			Chicago Midway		
Charlotte			Miami		
Dallas Love Field			Chicago O'Hare		
Washington Reagan National			Philadelphia		
Denver			Phoenix		
Dallas Fort Worth			San Diego		
Newark			San Antonio		
Fort Lauderdale Hollywood			Seattle		
Houston			San Francisco		
Dulles Washington			San Jose		
John F. Kennedy New York			John Wayne Orange County		
Las Vegas					

Not routinely congested

Congested

Capacity constrained

Severe capacity constraints

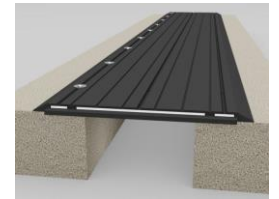


ROADSIDE APPLICATIONS

PHOENIX SKY HARBOR INTERNATIONAL AIRPORT

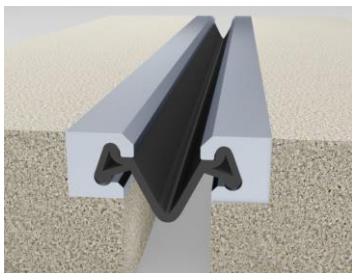


- Airport Improvement Project Arrival & Departure Elevated Roadways
- Completed 2024
- PRODUCTS: BEJS, Wabo® SafetyFlex

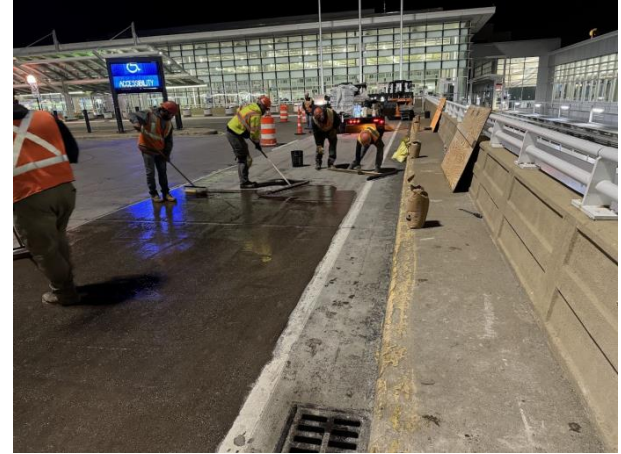


JOHN F. KENNEDY INTERNATIONAL AIRPORT (JFK)

- Elevated Roadways
- On Going
- PRODUCTS: Wabo® StripSeal



MINNEAPOLIS–SAINT PAUL INTERNATIONAL AIRPORT



- Terminal 1 - Departure Lane Restoration
- Completed Fall 2024
- PRODUCTS: Kwik Bond Polymers 204 P Seal

LOS ANGELES INTERNATIONAL AIRPORT (LAX)



- Departure Lane
- Completed 2016
- PRODUCTS: KBP PPC 1121

FORMER SPRINGFIELD-BRANSON NATIONAL AIRPORT



- WHO: Expedia HQ
- WHERE: Former SGF
- WHEN: 2024
- WHY: Recoat and waterproof almost 15-year-old joints and even older facade
- PRODUCTS: SikaThorocoat 400 DOT, Sikaflex 2C EZ-Mix

FORMER SPRINGFIELD-BRANSON NATIONAL AIRPORT

- Mock up was done on coating which which was used around exterior
- 2C EZ-Mix was used inside and out.



PALOMAR AIRPORT ROAD BRIDGE



- WHO: McClellan-Palomar Airport
- WHERE: San Diego, CA
- WHEN: 2009
- WHY: Major concrete deterioration over major airport thoroughfare
- PRODUCTS: Sikadur 31, Sikadur 35, SikaFlex 1a, SikaTop 123 PLUS, Sika Armatec 100 EpoCem, SikaFerrogard Anodes, SikaTop Seal 107

PALOMAR AIRPORT ROAD BRIDGE





AIRSIDE APPLICATIONS

INDIANAPOLIS INTERNATIONAL AIRPORT



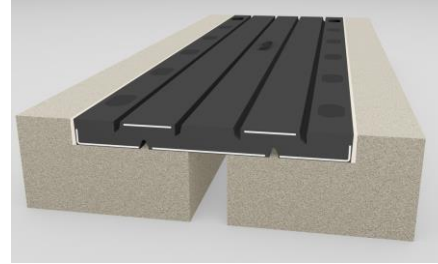
- North Runway Restoration
- On Going
- WaboCrete II Gray



DENVER INTERNATIONAL AIRPORT (DEN)



- Airport Roadways – partial airfield & terminal traffic
- On Going
- PRODUCTS:
- WaboTransFlex



DENVER INTERNATIONAL AIRPORT (DEN)



- Roadside and Airside
- 2018/2019
- PRODUCTS: KBP 204 Pseal



SAN FRANCISCO – DREAMLINE – KBP



- Airside Parking
- Completed 2020
- PRODUCTS: KBP PPC 1121

COAST GUARD AIR STATION – SACRAMENTO CA



- Airside Parking and Tarmac
- Completed 2019
- PRODUCTS: KBP PPC 1121

LAGUARDIA AIRPORT RUNWAY NEW YORK CITY



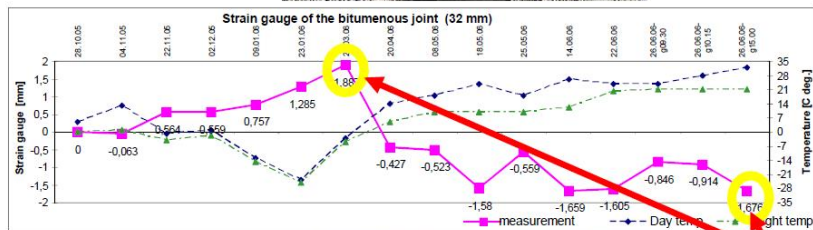
- WHO: Laguardia International Airport
- WHERE: New York
- WHEN: 2005
- WHY: Added electrical & touchdown lighting to original 1960's runway extension.
- PRODUCTS: Sika Carbodur & Sikadur 30



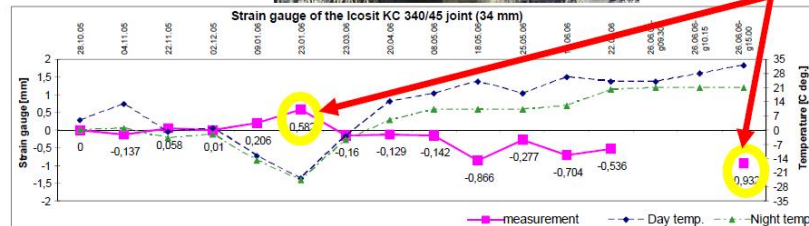
KRAKOW INTERNATIONAL AIRPORT

Thermal change of joints made of bitumenous and Icosit KC 340/45
(between the concrete slabs with dimensions of 4 x 4 m)

Bitumenous joint



Icosit KC 340/45



Reduction app. 50%

- WHO: Krakow International Airport
- WHERE: Krakow, Poland
- WHEN: 2006-2009
- WHY: New joint/crack repair system was being tested against existing standard bituminous system
- PRODUCTS: Sika Icosit KC 340/45



KRAKOW INTERNATIONAL AIRPORT



SIKA AIRPORT SOLUTIONS



BUILDING TRUST



SIKA FULL RANGE SYSTEMS FOR AIRPORTS

An aerial photograph of an airport complex. The image shows a large tarmac area with several aircraft parked at gates. In the foreground, there are large terminal buildings with glass facades and flat roofs. To the right, there are hangars and maintenance buildings. The background shows runways, taxiways, and surrounding green fields. Several yellow callout boxes with black text are overlaid on the image, pointing to specific areas of the airport.

Airside aprons, taxi-ways, aircraft stands,
Air traffic control tower, etc. >>

Terminal buildings >>

Air traffic control tower >>

Baggage handling, cargo and
back of house areas >>

Hangars and
maintenance buildings >>

Carpark and passenger transport >>

Infrastructure >>

WHO HAS THE FIRST QUESTION?

SUPPORTING SLIDES – TO BE DELETED



BUILDING TRUST



MSP TERMINAL 1

This project was completed in September/October 2024.

The passenger side of the airport (departure lanes) was coated with KBP 204 Pseal as part of a restoration project. This project also included joints (unsure if they were Watson Bowman). The contractor was Lunda and the Pseal portion took approximately 1 week to complete over 50,000 sq feet.

Below is a link to the pictures:

- <https://photos.app.goo.gl/7gSKw4sHbo2WrTNP6>

