

Sarnafil Inc.  
100 Dan Road  
Canton, MA 02021  
617-828-5400

**WATERPROOFING TECHNICAL BULLETIN #03-94**

**TO:** Authorized Waterproofing Applicators  
Sarnafil Sales Staff & Sales Reps  
Sarnafil Technical Staff  
Sarnafil Services Staff

**FROM:** Technical Service Waterproofing Department

**DATE:** January 17, 1994

**RE:** Installation of Sarnafil Control Test Drain

The Sarnafil Control Test Drain is an important component of the Sarnafil Waterproofing System 3000. The Control Test Drain indicates a violation in the waterproofing system during the water testing and also allows for continuous verification that the waterproofing system is watertight. If needed the waterproofing system can also be drained by the Control Test Drain.

The Sarnafil Control Test Drain is comprised of a stainless steel embedment flange, 19 inches long threaded PVC pipe, and a clear plastic inspection vessel.

**Installation Procedures**

- Install Sarnagrids according to Sarnafil specification and project documents.
- A 1 inch diameter hole shall be drilled through the structural deck at or near the low point within each grid area. Prior to drilling the hole, check the building interior to ensure nothing will be in the way of drilling or drain.

Note: If the hole cannot be completed (i.e. hit rebar) the uncompleted hole is to be filled with quick setting grout.

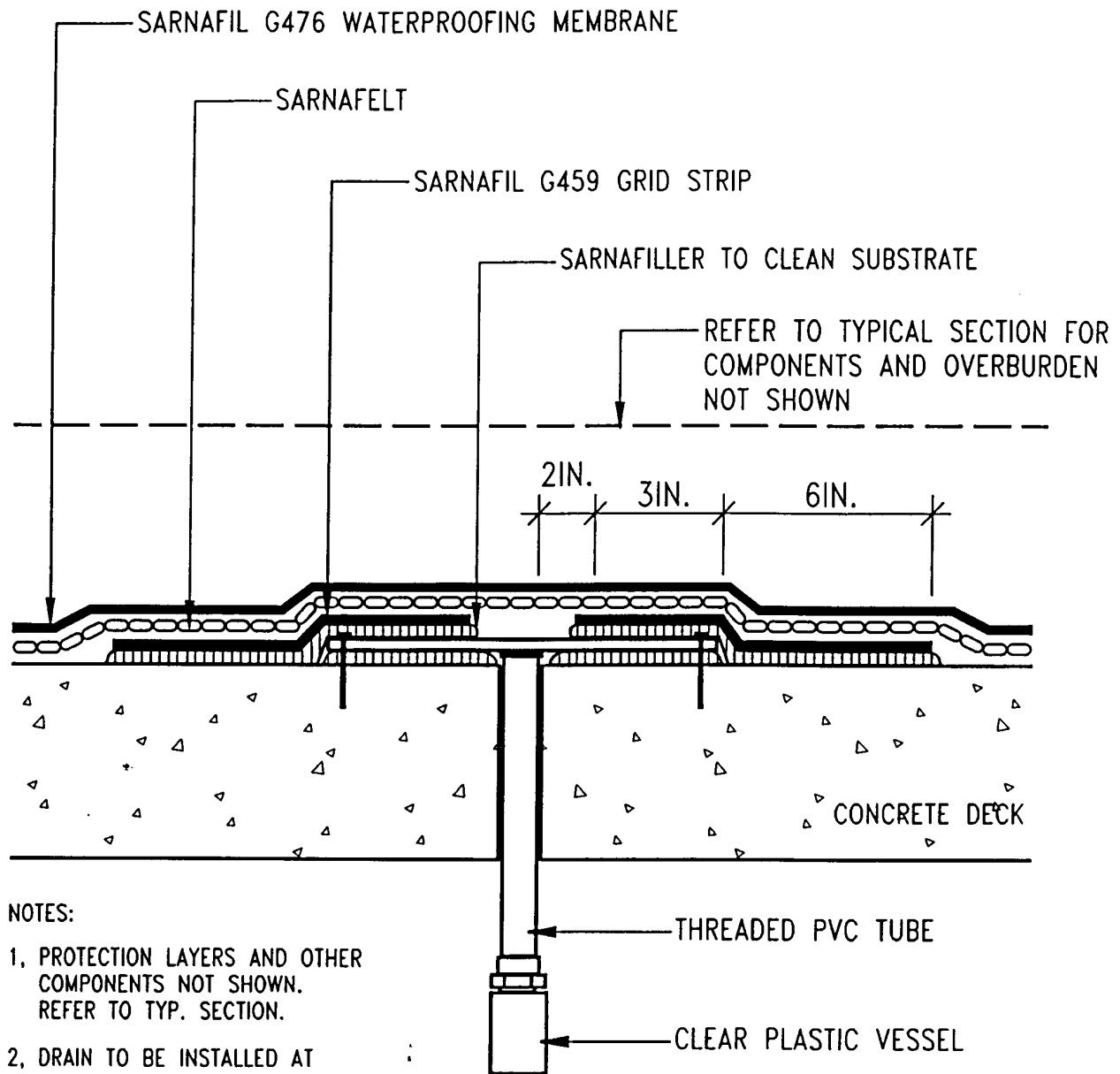
- Stuff a rag in the hole.
- Mix the grid adhesive according to Sarnafil specifications.



- Apply the grid adhesive with a trowel to the prepared surface approximately 4 inches square around the hole.
- Carefully remove the rag.
- Screw the threaded PVC pipe into the stainless steel embedment flange.
- While the grid adhesive is still active insert the Control Test Pipe into the hole until the embedment flange is fully set into the grid adhesive.
- Let the grid adhesive dry for approximately one hour.
- Secure the four corners of the embedment flange using approved concrete anchors.
- Install the glass vessel onto the underside of the PVC pipe.
- Apply a piece of tape over the hole in the embedment flange.
- Apply the grid adhesive using a trowel over the embedment flange and six inches onto the deck surrounding the embedment flange.
- Apply a 24 x 24 inch target piece of Sarnafil G459 centered over the embedment flange into the grid adhesive while the adhesive is still active.

Note: The grid adhesive will require 8-18 hours (temperature related) to fully set-up.

- After the grid adhesive has set-up, cut a hole in the G459 membrane directly over the hole in the Control Test Drain.
- The waterproofing membrane and Sarnafelt NWP-HD shall run continuously over the Sarnafil Control Test Drain.
- See Sarnafil Control Test Drain detail attached.



NOTES:

1. PROTECTION LAYERS AND OTHER COMPONENTS NOT SHOWN. REFER TO TYP. SECTION.
2. DRAIN TO BE INSTALLED AT LOW POINT IN DECK.

SARNAFIL CONTROL TEST DRAIN

**Sarnafil Inc.**  
Roofing and Waterproofing Systems

JOB NAME:

Attachment #1  
Technical Bulletin #03-94  
Sarnafil Control Test Drain

AS A SUPPLIER OF MATERIALS ONLY SARNAFIL INC. DOES NOT ASSUME RESPONSIBILITY FOR ERRORS IN DESIGN, ENGINEERING, QUANTITIES, OR DIMENSIONS. THE ARCHITECT, CONTRACTORS, OR OWNERS REPRESENTATIVE MUST VERIFY ALL DIMENSIONS, SIZES, AND SUITABILITY OF DETAILS.

SCALE:

N.T.S.

DRW. NO.:

03-94-1

DATE:

1997