



# SIKA SOLUTIONS FOR BRIDGES SYSTEMS AND CAPABILITIES

BUILDING TRUST





# STATE OF AFFAIRS FOR BRIDGES IN THE UNITED STATES

## America's Infrastructure is at a Crossroads.

Across the U.S., aging infrastructure threatens public safety, disrupts commerce, and hampers economic growth. Since 1988, the American Society of Civil Engineers has graded our progress—and it's been slow. In 2025, the nation earned a "C" on the ASCE Infrastructure Report Card, the highest score yet, but hardly a cause for celebration.

The numbers tell the story:

- \$9.1 trillion needed to bring all infrastructure categories to a state of good repair (grade B)
- \$3.7 trillion in funding gap
- 1 out of 3 bridges in need of repair or replacement
- 1 out of 15 bridges are in "poor" condition
- \$373 billion required just to fix our bridges



## WE DON'T PROVIDE PRODUCTS. WE PROVIDE SOLUTIONS.

Every project you take on carries high stakes—tight timelines, tough environments, and the pressure to deliver lasting results. Trust Sika Infrastructure to guide your successes.

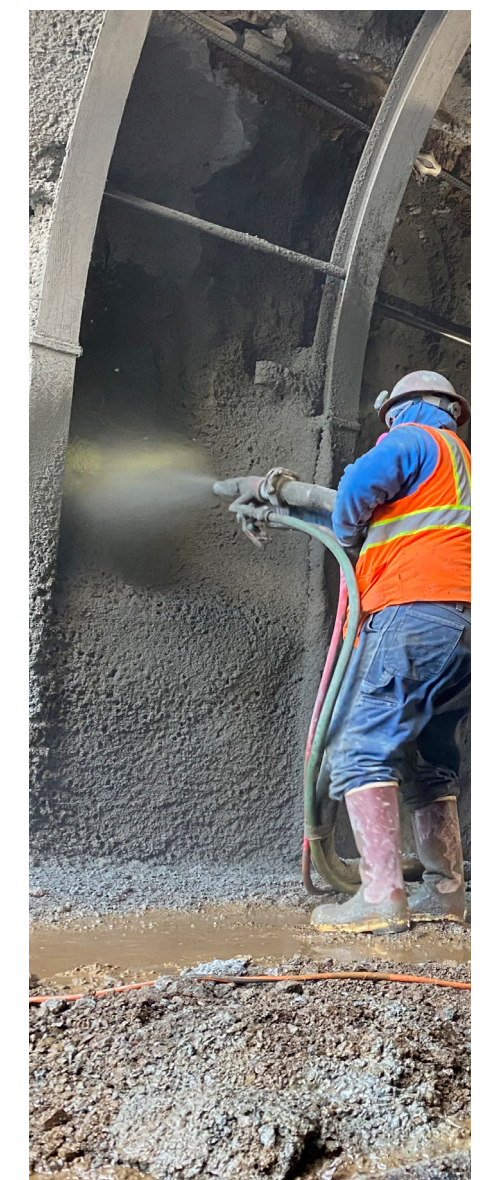
Sika now proudly offers the most comprehensive Infrastructure solutions portfolio in the industry. Whether looking for Sika concrete protection and repair, Kwik Bond Polymer overlays, Wabo Expansion joints, or Kings shotcrete solutions, we have you covered.



EXPANSION JOINTS



OVERLAYS



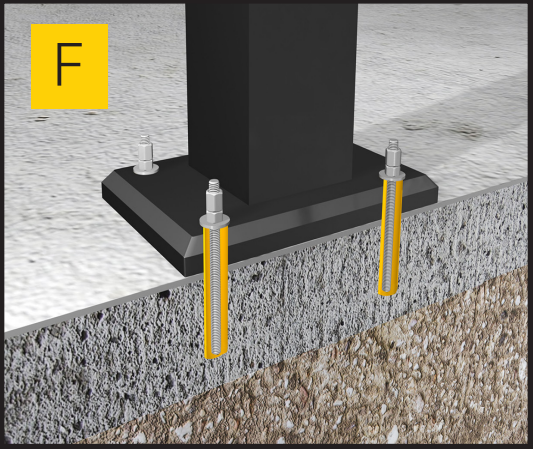
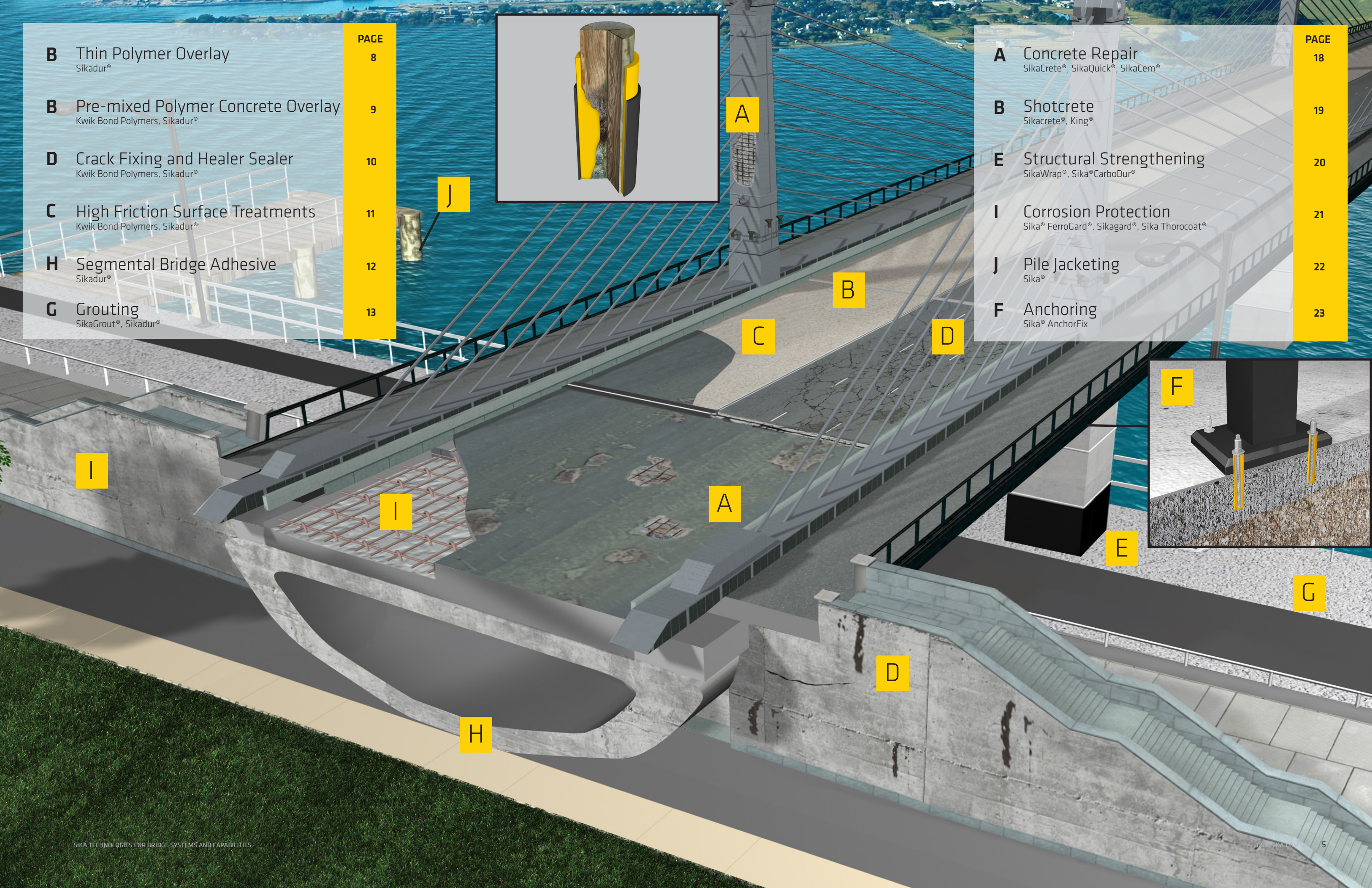
REPAIR & STRENGTHEN



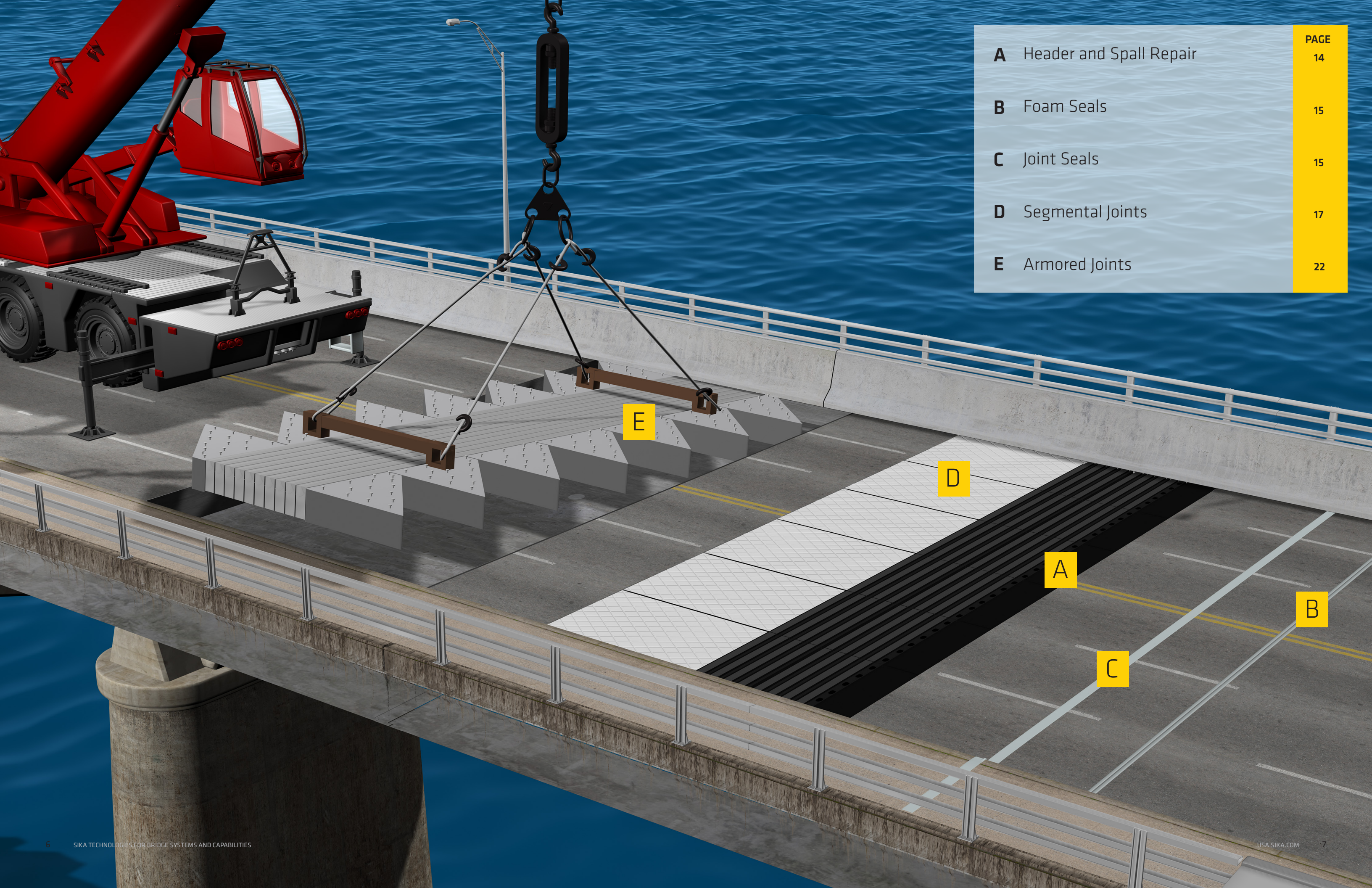
<b>B</b>	Thin Polymer Overlay Sikadur®	<b>PAGE</b> 8
<b>B</b>	Pre-mixed Polymer Concrete Overlay Kwik Bond Polymers, Sikadur®	9
<b>D</b>	Crack Fixing and Healer Sealer Kwik Bond Polymers, Sikadur®	10
<b>C</b>	High Friction Surface Treatments Kwik Bond Polymers, Sikadur®	11
<b>H</b>	Segmental Bridge Adhesive Sikadur®	12
<b>G</b>	Grouting SikaGrout®, Sikadur®	13



<b>A</b>	Concrete Repair SikaCrete®, SikaQuick®, SikaCem®	<b>PAGE</b> 18
<b>B</b>	Shotcrete Sikacrete®, King®	19
<b>E</b>	Structural Strengthening SikaWrap®, Sika®CarboDur®	20
<b>I</b>	Corrosion Protection Sika® FerroGard®, Sikagard®, Sika Thorocoat®	21
<b>J</b>	Pile Jacketing Sika®	22
<b>F</b>	Anchoring Sika® AnchorFix	23







**A** Header and Spall Repair

**B** Foam Seals

**C** Joint Seals

**D** Segmental Joints

**E** Armored Joints

PAGE

14

15

15

17

22



# THIN POLMYER OVERLAY

A bridge deck overlay adds a protective layer that extends service life, improves ride quality, and boosts traction. It's a fast, effective way to preserve performance and prevent costly repairs.

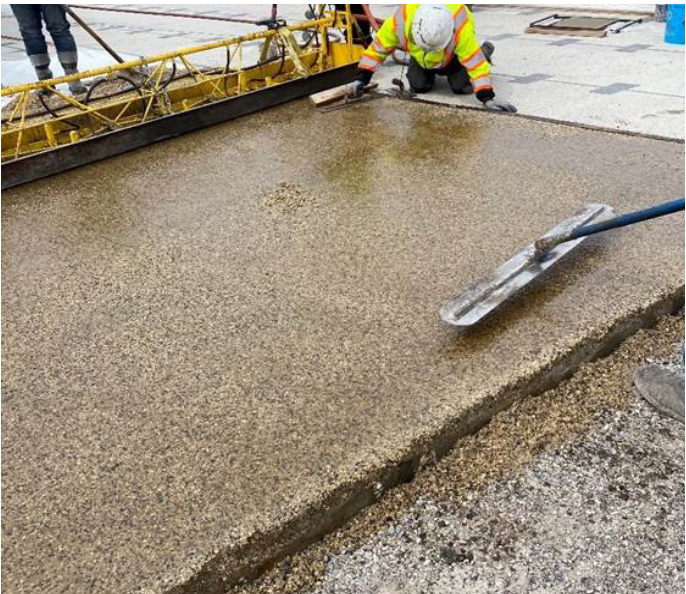


## ADVANTAGES

- Complete line of Epoxy and Polyester overlays available
- Engineered for easy application and minimal traffic downtime
- Approved for DOT applications in most states

# PRE-MIXED POLYMER CONCRETE OVERLAY

This mix of aggregates and polymer binder is applied as a thin layer over existing concrete to restore durability, improve performance, and protect against wear and environmental damage.



## ADVANTAGES

- Bridge deck overlays from ¾" to 12" in a single lift
- Can return traffic within 1.5 - 3 hours at temperatures even at low temperatures
- Conforms to the latest polymer overlay specifications including CalTrans 551/550
- Superior adhesion to Portland cement concrete, latex modified concrete, and silica fume concrete



# CRACK FIXING AND HEALER SEALER

Epoxy and methacrylate crack repair applications are structural and economical solutions for cracked and unsound concrete that will prolong the life cycle of any existing structure. These can be used alone or in conjunction with other repair and protection systems.



- KEY PRODUCTS:
- Sikadur®-35 Hi-Mod LV, LV LPL
  - Sikadur®-52
  - Sikadur®-55 SLV
  - Kwik Bond Polymers KBP 204 Pseal
  - Sikaguard® 20 Pronto TF

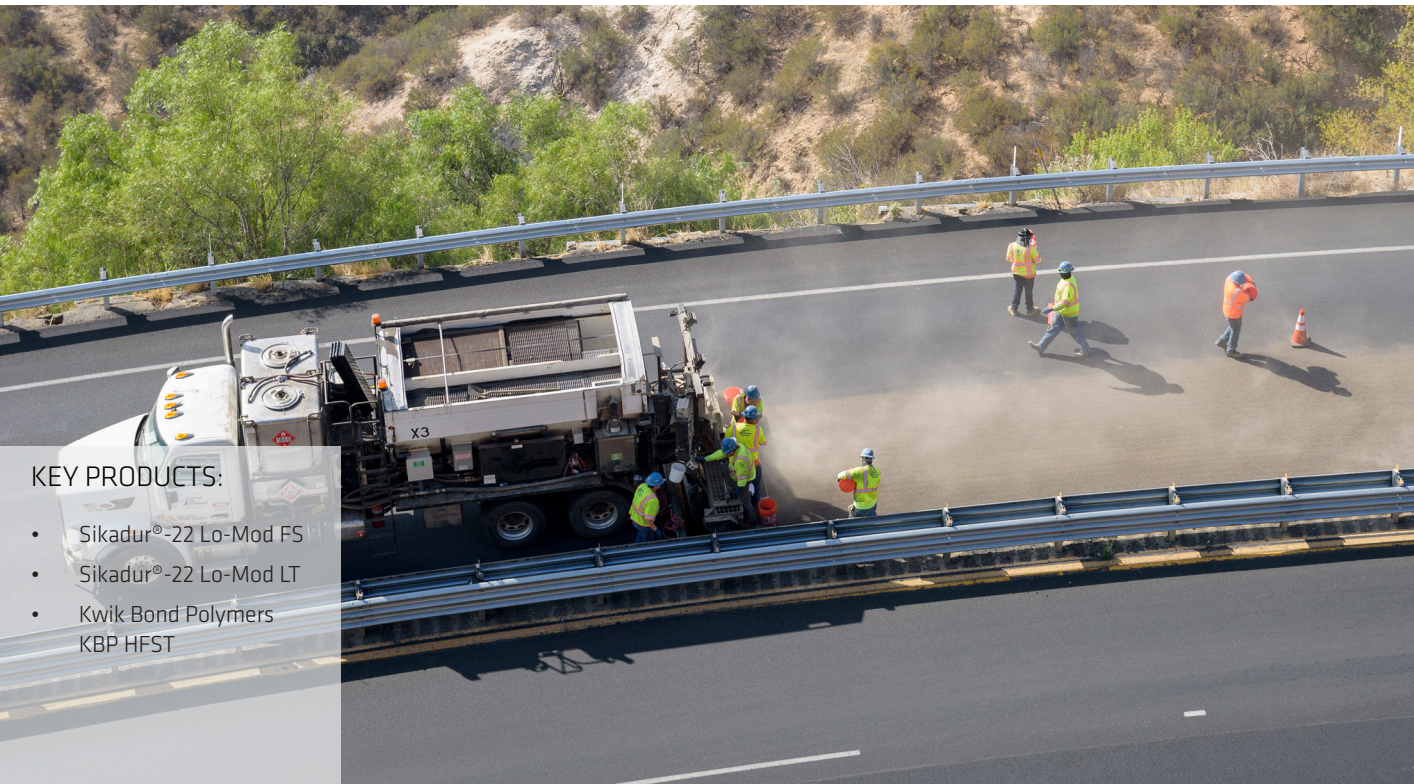


## ADVANTAGES

- Rapid cure allows for traffic or additional overlay applications in as little as 2.5 hours
- Tenacious bonding even in moist conditions
- Ultra-low viscosities, ~20 cps, for even the smallest cracks
- 50 years of proven performance with their Sikadur crack repair systems

# HIGH FRICTION SURFACE TREATMENTS

High Friction Surface Treatment (HFST) is a single layer epoxy application with high friction aggregate that significantly and immediately increases roadway friction to reduce auto crashes, injuries and fatalities on problem road surfaces.



- KEY PRODUCTS:
- Sikadur®-22 Lo-Mod FS
  - Sikadur®-22 Lo-Mod LT
  - Kwik Bond Polymers KBP HFST



## ADVANTAGES

- Conforms to ASTM C-881, Grade 1 and AASHTO M-235 specification
- Products successfully evaluated through National Transportation Product Evaluation Program (NTPEP)
- Designed to work with automated equipment
- Traffic time as low as 2 hours



# SEGMENTAL BRIDGE ADHESIVE

Sika's high-performance epoxy Segmental Bridge Adhesives (SBA) are high modulus, high strength and moisture tolerant allowing for the bonding of bridge segments in specific temperature ranges, from 20°F - 115°F.



## ADVANTAGES

- Sikadur 31 SBA comes in slow and normal set formulations over multiple temperature ranges
- Contact strength up to 2,000 psi after 8 hour max. open time
- Conforms to current ASTM C-881, Type VI, VII requirements and ASBI guidelines
- Paste consistency for easy, non-sag vertical application

# GROUTING

From precision epoxy grouts to versatile cementitious grouts, Sika offers a full range of products with extremely high strengths and resilience for use in demanding bridge and roadway applications.



## ADVANTAGES

- Effective Bearing Areas greater than 95%
- Low dust and low exotherm formulas allow for deeper pours in confined areas
- All Sika cementitious grouts meet ASTM C-1107
- Packaging options for cement and epoxy grout to meet project need



# JOINT SOLUTIONS: HEADERS AND SPALL REPAIR & ASPHALTIC PLUG

We deliver engineered expansion joint solutions that ensure long-term performance, safety, and durability for bridges and other critical infrastructure.

HEADERS AND SPALL REPAIR APPLICATIONS



KEY PRODUCTS:

- WaboCrete® II
- Emcrete II
- Wabo®SurfaceMend
- Kwik Bond Polymers Easy Patch Kit PPC 1121
- Sikacrete® 930

## ADVANTAGES

- Available in four technologies: polyester, polyurethane, epoxy and UHPC
- Ideal for patching, spalled/cracked, split-slab conditions, and blockouts for joint gaps
- Fast-setting formulations allow for traffic reopening in as little as 1 hour
- Solutions available for a wide range of conditions, from high moisture to cold weather

ASPHALTIC PLUG JOINT



KEY PRODUCTS:

- Wabo®Expandex

## ADVANTAGES

- Ideal for asphalt overlay and abutment applications
- Anchorless joint system for simplified installation
- Accommodates ±¾" of movement and joint opening irregularities

# JOINT SOLUTIONS: JOINT SEALS

RUBBER AND SILICONE SEALS



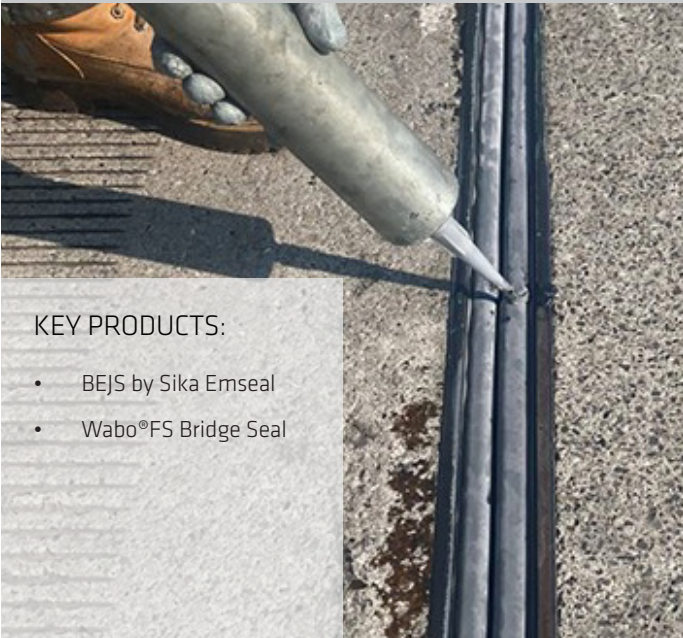
KEY PRODUCTS:

- Epoxy Bonded Seal (EBS)
- Jeene®
- Wabo®Compression Seal
- Wabo®SPS
- Wabo®SiliconeSeal
- SikaSil® 728

## ADVANTAGES

- Multiple system options available to meet specific project requirements and performance needs
- Rubber seals available in EPDM and Neoprene offering a continuous, watertight, and flexible seal
- Two-part, self-leveling silicone systems offer excellent movement accommodation and temperature resistance

FOAM SEALS



KEY PRODUCTS:

- BEJS by Sika Emseal
- Wabo®FS Bridge Seal


## ADVANTAGES

- Suitable for medium movement joints ranging from 2" to 4"
- Recommended for both retrofit and new expansion joints in highways and bridges
- Delivers a watertight, UV-stable sealing solution



# JOINT SOLUTIONS: LOW PROFILE EXPANSION JOINTS

STEEL REINFORCED MOLDED



KEY PRODUCTS:

- Wabo®TransFlex
- Wabo®Flex
- Wabo®ElastoFlex
- Wabo®SafetyFlex
- Wabo®MDM TransFlex

## ADVANTAGES

- Full line of segmental bridge expansion joint systems.
- Accommodates large movements 4” and greater
- Designed for low height profiles and stage construction applications
- Tongue and groove connections prevent uplift or separation

STEEL ARMOR SYSTEMS



KEY PRODUCTS:


- Wabo®FabPackaging
- Wabo®StripSeal

## ADVANTAGES

- Designed to accommodate differential slab movements and anticipated skew forces.
- Engineered for high-impact, heavy-duty, and repetitive loading conditions.
- Suitable for shallow-depth overlay projects where space is limited.
- Provides a continuous, watertight seal with a maximum movement capacity of 5 inches.

# JOINT SOLUTIONS: STRUCTURAL STEEL EXPANSION JOINTS

MODULAR



KEY PRODUCTS:

- Wabo STM (Multiple Support Bar)
- Wabo BET (Single Support Bar)

## ADVANTAGES

- New construction or repair of existing expansion joint systems
- Fully customizable to meet a variety of conditions and movement requirements
- Designed for heavy trafficked structures, including the ability for longitudinal movements up to 75”

FINGER JOINTS



KEY PRODUCTS:

- Wabo® Finger
- Wabo® FingerPlus
- Wabo® Trident

## ADVANTAGES

- Available in one-piece and fully customizable system to meet complex project requirements
- Engineered with a robust design to withstand high impact and repetitive loading
- Configurable to support watertight, multi-axis movement and staged construction requirements



# CONCRETE REPAIR

High-performance concrete repair materials for bridges, engineered for strength, durability, and rapid application. Designed to resist harsh conditions and meet structural specs while minimizing shrinkage and downtime.



- KEY PRODUCTS:
- SikaCrete®-421 CI Rapid
  - SikaQuick®-1000, 2500
  - SikaQuick® VOH
  - SikaCem®-226 CI
  - SikaCrete®-100 CI



## ADVANTAGES

- A repair material for every application; form and pump, form and pour, trowel applied, spray applied
- Fast setting products allowing return to traffic in as little as 45 min.
- Produced in state of the art Sika manufacturing facilities under strict quality guidelines

# SHOTCRETE

Shotcrete is a high-performance sprayed concrete that combines many aspects of concrete technology with admixture chemistry with modern methods of materials handling and delivery, performing exceptionally well in cold temperatures and other demanding conditions.



- KEY PRODUCTS:
- King® MS-D1
  - King® MS-D3
  - King® RS-D1
  - King® HC-D1
  - King® LR-D1
  - King® MS- W1
  - SikaCem®-226 CI



## ADVANTAGES

- Air-entrainment for improved freeze-thaw and salt-scaling resistance
- Synthetic or steel fiber reinforcement for increased load-carrying and energy-absorbing capacities
- Set-time accelerator for early-age strength gain and rapid re-entry
- Solutions include options such as RS-D1 for rapid strength gain and HC-D1 for low shrinkage potential with enhanced crack resistance



# STRUCTURAL STRENGTHENING

SikaWrap and CarboDur composite materials are used to strengthen bridge structural elements, including but not limited to confinement of piers, flexural and shear strengthening of girders and pier caps, and seismic upgrades.



## ADVANTAGES

- High strength and light weight
- Versatile - can be wrapped around complex geometries
- Non-corrosive and durable
- Easy to install
- Low aesthetic impact
- Reduced Environmental Impact

# CORROSION PROTECTION

Sika offers superior concrete corrosion mitigation solutions by addressing the root cause of the problem within the structure using anodes and rebar coatings, as well as protecting from the surface, using sealers and coatings for increased longevity.



## ADVANTAGES

- Sacrificial anodes protect reinforcing steel for many years
- A complete range of silane and siloxane sealers
- Anti-Carbonation coatings offer extremely high resistance to chlorides and waterborne salts
- All solutions are vapor permeable to mitigate potential freeze/thaw damage



# PILE JACKETING

Combining products from several product lines with expert knowledge, Sika's pile jacketing repair systems leave both concrete and timber piles stronger than new.



KEY PRODUCTS:

- Sikadur® -35 Hi-Mod LV LPL 500 aqua
- SikaGrout®-500 Aqua
- Sikament® 100 SC
- Sika FerroGard® 901 S

# ANCHORING

Sika AnchorFix products are highly engineered anchoring adhesives, rigorously tested for the most demanding applications in both cracked and uncracked concrete.



KEY PRODUCTS:

- Sika® AnchorFix-1
- Sika® AnchorFix-2
- Sika® AnchorFix-2020
- Sika® AnchorFix-3001



ADVANTAGES

- Full-system solutions for timber and concrete piles
- Pre-Fabricated sleeves simplify repairs
- Guaranteed compatibility across product lines
- Proven solutions for common failures

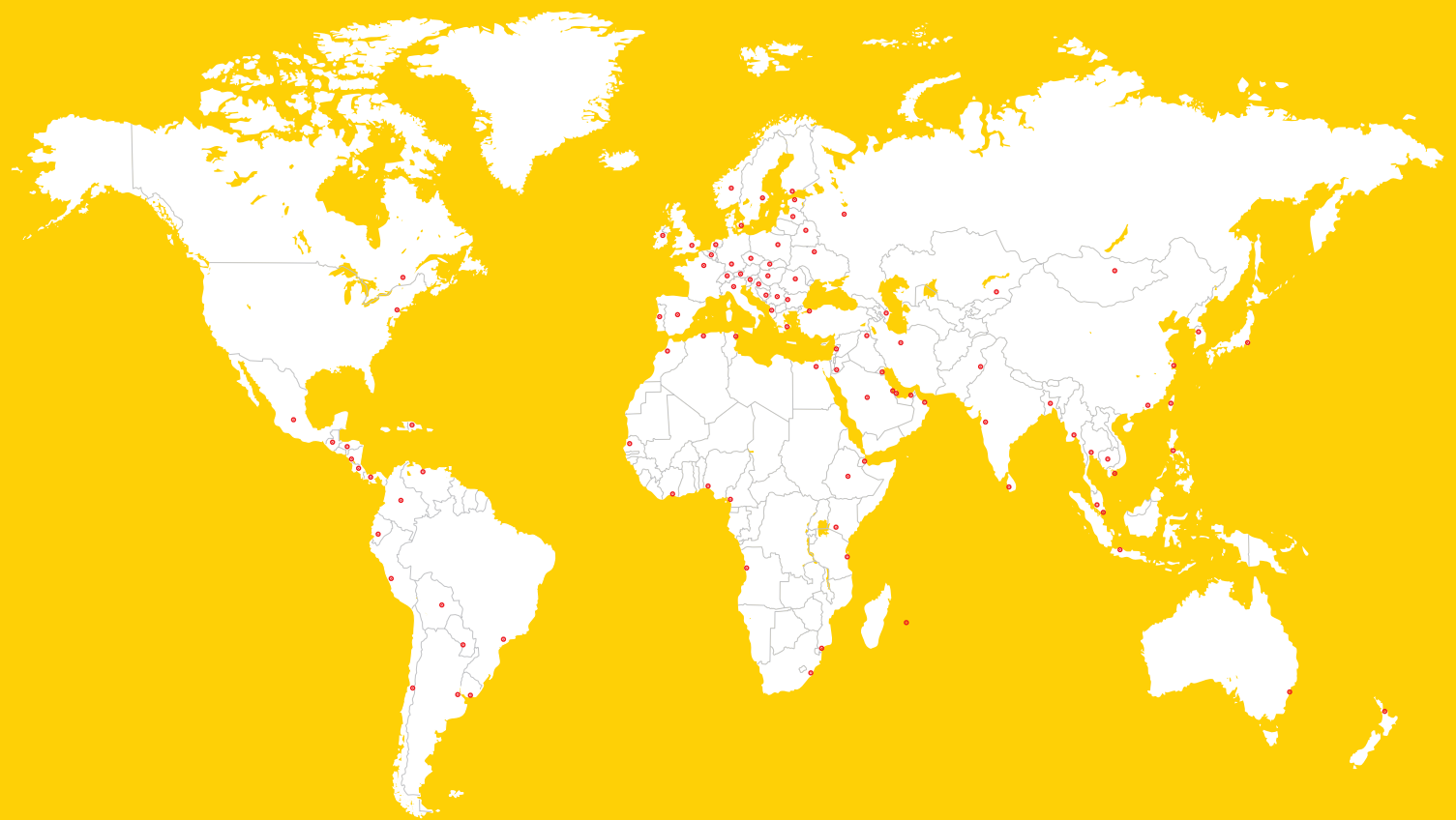


ADVANTAGES

- ESR to AC308 by ICC-ES (ESR-3608) and IAPMO-UES (Report #0327)
- Certified to ANSI /NSF 61 by UL & IAPMO-R&T (N-7858)
- Product available for application temperatures down to -14°F
- Detailed Design software and Installation guides available online



# GLOBAL BUT LOCAL PARTNERSHIP



## WE ARE SIKA

With more than 100 years of experience, Sika is a worldwide innovation and sustainability leader in the development and production of systems and products for commercial and residential construction, as well as the transportation, marine, automotive, and renewable energy manufacturing industries.

Sika has offices in 103 countries with over 400 manufacturing facilities and more than 33,000 employees worldwide. With annual sales of CHF 11.24 billion in 2023, our commitment to quality, innovation, and the environment as well as putting our customer's needs first, encompasses why Sika is the global leader in our industries.

## SIKA CORPORATION

201 Polito Avenue  
Lyndhurst, NJ 07071 USA  
Phone 201-933-8800  
[usa.sika.com](http://usa.sika.com)

**BUILDING TRUST**

