



Sikadur[®]-58 CJR

SEMI-RIGID, 100% SOLIDS EPOXY CONTROL JOINT FILLER

- Self-leveling with low flow away from joints for easier shaving
- Low viscosity for easy pump application
- Extended pot life for hand mix and bulk gun application

Available in:

10 gal kits

1 x 5 gal pail comp. A

1 x 5 gal pail comp. B



Sikadur[®]-58 CJR

SEMI-RIGID, 100% SOLIDS EPOXY CONTROL JOINT FILLER

WHERE TO USE

For saw cut or preformed control and construction joints that are:

- Horizontal, non-moving, interior joints
- Subject to load-bearing conditions involving wear and impact.
- Warehouses and industrial plants
- Large Retail and Box Stores
- Repairing interior concrete slabs that have experienced random cracking due to shrinkage
- As a semi-flexible adhesive

PUMP INFORMATION

1:1 mix ratio pumps:

AST - PCH GMP-025 'LIL PRO

Graco - Reactor E-8p

SealBoss - JointMaster Pro2 G3i Digital

ADVANTAGES



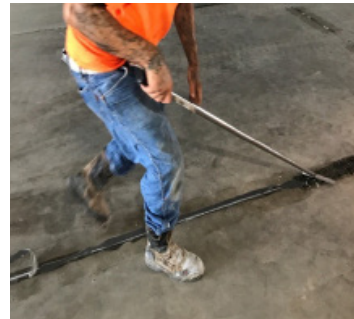
THICKER BODY

Won't run out after placed in a joint but holds a nice ridge. Less staining.



NO GRIT FILLER

Won't wear down or attack pump components as fast as other formulations.



EASY TO SHAVE

Compared to other epoxies. No offensive smell when mixed or heated.



EASY TO APPLY

With a bulk gun or plural component pump and a static mixing nozzle.



FOR MORE INFORMATION:

Contact Sika: Phone 800.933.SIKA(7452) Website: www.sikausa.com

Sika Corporation

201 Polito Avenue
Lyndhurst, NJ 07071
Phone: 201-933-8800
Fax: 201-933-6225



BUILDING TRUST

