

# Architectural Concrete Color

Engineered Systems for Coloring, Texturing and Performance in Architectural Concrete

## ■ Architectural Catalog ■



Starbucks, Downtown Disney



### Protect Your Floors with Scofield Concrete Sealers

Scofield sealers protect the surface, enhance the appearance of colored concrete, and may provide protection against contamination and chemical attack by imparting a film-forming layer on the surface of the concrete. Consult a Scofield Concrete Cures & Sealers Guide.

SCOFIELD® Formula One Liquid Dye Concentrate is a solvent soluble dye for coloring interior concrete surfaces. Designed for easy job-site dilution with acetone, the diluted material will penetrate into the pores of properly prepared new or old concrete. It can be applied lightly to gently tone surfaces, or heavily to develop deep colors.



# Integral Concrete Color

for new concrete pours only

**Integral concrete color** is color that is added to the concrete mix at the concrete batch plant. It is called integral because this color is added into the concrete mix, and when the concrete is poured out of the truck and into the formwork, it is colored all the way through.

Integral concrete color is typically the most cost-effective way to add color to concrete, and it can be used alone or in conjunction with other concrete finishing techniques to create a variety of appearances. The simplest way to use this coloring method is to do a broom finish on the surface after placement. This is a common technique for exterior concrete plazas, sidewalks, drives, and patios. Integral concrete color is also used for cast-in-place, tilt-up, and manufactured concrete products.

## Scofield Integral Concrete Color systems:

- CHROMIX® Admixtures for Color-Conditioned® Concrete
- SOLACHROME™ Integral Treatment for High-SRI Concrete
- SCOFIELD® Integral Color SG
- LITHOCHROME® Colorwax™



Contact Scofield Customer Service at 800-800-9900, or visit us on the web at [www.scofield.com](http://www.scofield.com).



# CHROMIX® P Admixtures

for Color-Conditioned® Concrete

## ■ Integral Concrete Color Chart A-312P ■



Detroit Riverwalk



### Protect Your Concrete with Scofield Sealers

Scofield sealers protect the surface, enhance the appearance of colored concrete, and may provide protection against contamination and chemical attack by imparting a film-forming layer on the surface of the concrete. Consult a Scofield Concrete Curing & Sealing Guide.

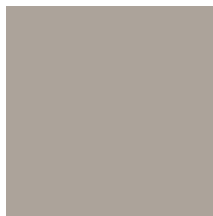
CHROMIX® Admixtures for Color-Conditioned® Concrete are pre-packaged, easy to disperse bags of integral coloring admixture that permanently color decorative architectural concrete placements, precast structures, and other cementitious materials. The pulpable toss-in bag quickly disintegrates into the cement containing mix.



# CHROMIX<sup>®</sup> P Admixtures

for Color-Conditioned<sup>®</sup> Concrete

## ■ Integral Concrete Color Chart A-312P ■



**C-19** Gray Stone



**C-10** Cool Gray



**C-284** Landmarks Gray



**C-24** Charcoal



**C-34** Dark Gray



**C-16** Winter Beige



**C-235** Autumn Beige



**C-20** Limestone



**C-25** Sombrero Buff



**C-12** Mesa Beige



**C-38** Burnt Red



**C-36** Sorrento Red



**C-27** Westwood Brown



**C-37** Sunbaked Clay



**C-31** Shadow Slate\*



**C-30** Brownstone



**C-359** Barcelona Brown



**C-17** Earth Stone



**C-135** Summer Beige



**C-18** Spring Beige



**C-14** French Gray



**C-15** Coachella Sand



**C-11** Desert Sand



**C-21** Adobe Tan



# CHROMIX® G and L Admixtures

for Color-Conditioned® Concrete

■ Integral Concrete Color Chart A-350GL ■



Detroit Riverwalk



## Protect Your Concrete with Scofield Sealers

Scofield sealers protect the surface, enhance the appearance of colored concrete, and may provide protection against contamination and chemical attack by imparting a film-forming layer on the surface of the concrete. Consult a Scofield Concrete Curing & Sealing Guide.

CHROMIX® G Admixtures for Color-Conditioned® Concrete are free-flowing concentrated pigment granules designed to permanently color concrete and other cementitious materials. They can be poured directly into concrete mixes, conveyed by gravity feed or pneumatic equipment, or pre-dispensed into pulpable bags.



# CHROMIX® G and L Admixtures

for Color-Conditioned® Concrete



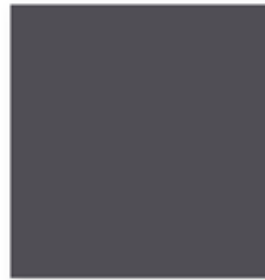
**C-10** Cool Gray



**C-284** Landmarks Gray



**C-2436** Flint



**C-24** Charcoal



**C-34** Dark Gray



**C-2636** Pecan



**C-21** Adobe Tan



**C-15** Coachella Sand



**C-11** Desert Sand



**C-16** Winter Beige



**C-36** Sorrento Red



**C-3260** Etruscan Tile



**C-38** Burnt Red



**C-1530** Miami Beach Red



**C-37** Sunbaked Clay



**C-27** Westwood Brown



**C-2136** Durango Brown



**C-30** Brownstone



**C-359** Barcelona Brown



**C-26** Antique Cork



**C-3150** Bark



**C-14** French Gray

*Both CHROMIX® G and CHROMIX® L Admixtures for Color-Conditioned® Concrete add color that is weather resistant, UV stable, lightfast, and alkali resistant. They contain no materials that initiate, accelerate, or promote the corrosion of steel, coated metal, plastic, or rubber concrete reinforcements. CHROMIX® G and CHROMIX® L Admixtures for Color-Conditioned® Concrete will not migrate from standing water, and can safely color concrete fountains, pools, water features, or concrete that will be polished and encounter damp or wet environments. All pigments used conform to the requirements of ASTM C 979 Pigments for Integrally Colored Concrete.*

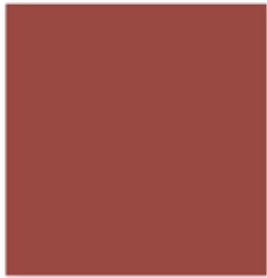
▲ Indicates High Dosage Color



Colors shown approximate the color of broom-finished concrete flatwork made with a medium-gray cement and cured with LITHOCHROME Colorwax in the matching color. If Colorwax is not used, the concrete color will not be as vibrant as shown.

Concrete should be batched and placed in accordance with Tech-Data Bulletins.

Concrete color is altered by many factors, including cement and aggregate color, slump, finishing practices, and curing method. Using the contemplated materials and construction techniques, representative samples should be cast for approval, especially when exact color matching is important.



**C-3650** Navajo Red



**C-3760** Roman Tile



**C-3250** Chicory Spice



**C-3450** Musky Mulberry



**C-2836** Smokey Plum



**C-3245** Golden Maize



**C-2536** Mesa Buff



**C-2736** San Diego Buff



**C-2236** Fennel



**C-2934** Covert Green **Δ**



**C-25** Sombrero Buff



**C-135** Summer Beige



**C-18** Spring Beige



**C-235** Autumn Beige



**C-4280** Shadow Gray **Δ**



**C-3849** Carob Brown **Δ**



**C-4570** Sudan Brown **Δ**



**C-3145** Carlsbad Canyon **Δ**



**C-6000** Shale Green **Δ**



**C-20** Limestone



**C-12** Mesa Beige



**C-17** Earth Stone



A SIKA BRAND

# CHROMIX® G and L Admixtures

for Color-Conditioned® Concrete

## Integral Concrete Color Chart A-350GL

Add beauty to both vertical and horizontal projects with CHROMIX® Admixtures. The reliable, nonfading and consistent admixtures for cast-in-place and precast concrete have been proven to stand the test of time.

Available in two convenient forms:

CHROMIX G (granular) available through select ready mix producers with the CHROMIX-It 404 Granular Color Dispenser. The simple, accurate and low maintenance solution to concrete color on demand.

CHROMIX L (liquid) available through selected ready-mix suppliers and distributors.

### Beauty, Durability and Value

CHROMIX Admixtures provide streak-free color-conditioning and performance characteristics superior to concrete colored with raw pigments. More than 550 color formulations are readily available.

Scofield provides free consultation and specification assistance to design and construction professionals to help achieve the required combination of high-performance characteristics.

LITHOCHROME® Colorwax™ is available in matching colors.

Review Tech-Data Sheets and SDS before use.  
Visit [www.scofield.com](http://www.scofield.com) for the most current versions.

### Curing

LITHOCHROME® Colorwax™ is a premium quality, environmentally friendly, two-component color-matched system designed for curing exterior concrete flatwork that has been colored with CHROMIX® Admixtures or LITHOCHROME® Color Hardener. It is recommended for curing when a uniform appearance is desired and the concrete will be allowed to weather naturally.

LITHOCHROME® Colorwax™ applied as a curing membrane over freshly finished concrete will retain the moisture in the concrete, providing more complete cement hydration which results in higher strengths, lower shrinkage and better overall durability long term. It is recommended for use on surfaces that have broomed, swirl or sponge floated finishes.

### Benefits:

- Allows the concrete to develop its full color potential
- Increases concrete strength and abrasion resistance
- Increases water retention throughout the curing cycle
- Exceeds the requirements of ASTM C 309 (Liquid Membrane-Forming Compounds)



Untreated Quarry Red  
(air cured)



Treated Quarry Red  
(cured with LITHOCHROME  
Colorwax)



# SOLACHROME™ High SR Color

Helps to mitigate the Urban Heat Island Effect

■ Concrete Color Chart A-382 ■



Volcano Bay



## Superior Concrete Floor Protection with Proguard™

Protect your floor from the trades by using SCOFIELD® Proguard™ Duracover™. Proguard Duracover is a flexible, durable material that will protect interior flooring from harsh construction environments both before and after installation. More at [www.scofield.com](http://www.scofield.com).

SOLACHROME® Integral Coloring Treatment for High-SRI Concrete is a patented solar reflective concrete coloring admixture. Its unique composition can permanently develop deep vibrant solar reflective colors that will stay cool longer and have reduced maximum temperatures than colors made from traditional technologies.

# SOLACHROME™ High SR Color

Helps to mitigate the Urban Heat Island Effect

## S-29 Sunstone

Solar Reflectance when made with:

Gray Cement	White Cement
SRI 33   SR 0.296	SRI 56   SR 0.475



## S-25 Cool Taupe

Solar Reflectance when made with:

Gray Cement	White Cement
SRI 30   SR 0.273	SRI 56   SR 0.475



## S-27 Iced Tea

Solar Reflectance when made with:

Gray Cement	White Cement
SRI 31   SR 0.278	SRI 55   SR 0.470



## S-24 Cool Canyon

Solar Reflectance when made with:

Gray Cement	White Cement
SRI 31   SR 0.278	SRI 56   SR 0.475



## S-23 Coco Bay

Solar Reflectance when made with:

Gray Cement	White Cement
SRI 30   SR 0.271	SRI 57   SR 0.480



## S-14 Cool Brick

Solar Reflectance when made with:

Gray Cement	White Cement
SRI 30   SR 0.273	SRI 55   SR 0.470



## S-18 Rose Quartz

Solar Reflectance when made with:

Gray Cement	White Cement
SRI 32   SR 0.284	SRI 60   SR 0.505



## S-11 Amethyst Ice

Solar Reflectance when made with:

Gray Cement	White Cement
SRI 34   SR 0.306	SRI 65   SR 0.535



## S-28 Laguna Beach

Solar Reflectance when made with:

Gray Cement	White Cement
SRI 34   SR 0.307	SRI 67   SR 0.555



The SR values shown are for SOLACHROME Integral colors. SOLACHROME Color Hardener colors have higher SR values.  
The products may be covered by one or more of the following patents: US 7,815,728; US 8,366,824; US 8,157,910; US 8,632,631



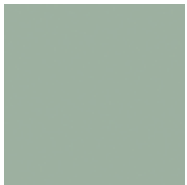
# Cool Colors, Cooler Pavement

## S-22 Cayman Dream

Solar Reflectance when made with:

Gray Cement  
SRI 38 | SR 0.338

White Cement  
SRI 68 | SR 0.565

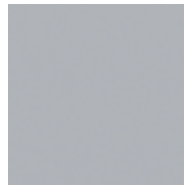


## S-16 Moonstone

Solar Reflectance when made with:

Gray Cement  
SRI 36 | SR 0.318

White Cement  
SRI 63 | SR 0.525

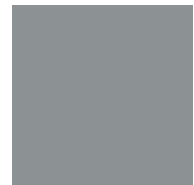


## S-12 Cold Front

Solar Reflectance when made with:

Gray Cement  
SRI 25 | SR 0.240

White Cement  
SRI 35 | SR 0.315



## S-21 Caribou

Solar Reflectance when made with:

Gray Cement  
SRI 32 | SR 0.288

White Cement  
SRI 54 | SR 0.460



## S-36 Sago Palm

Solar Reflectance when made with:

Gray Cement  
SRI 33 | SR 0.299

White Cement  
SRI 54 | SR 0.460

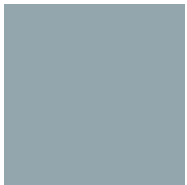


## S-45 Cool Bimini

Solar Reflectance when made with:

Gray Cement  
SRI 36 | SR 0.323

White Cement  
SRI 83 | SR 0.675

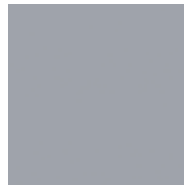


## S-33 Quicksilver

Solar Reflectance when made with:

Gray Cement  
SRI 33 | SR 0.293

White Cement  
SRI 56 | SR 0.475



SOLACHROME High-SR Concrete Color is engineered to help keep concrete temperatures lower, and to minimize the unwanted transfer of heat into the surrounding air. This is achieved using specially formulated colors and patented technology, which utilizes pigments with higher solar reflectance compared to many conventional hardscape materials. This “cool pavement” technology helps reduce the heat buildup in the entire concrete slab.

Concrete colors shown are approximate. Using the contemplated materials and construction techniques, representative samples should be cast for approval. Colors shown represent SOLACHROME High-SR Concrete made with both gray cement (left) and white cement (right). Refer to the SOLACHROME Tech Data Sheet at [www.scofield.com](http://www.scofield.com) for information.

# SCOFIELD® Integral Color SG

Economical Integral Concrete Color

- Integral Concrete Color Chart A-362 ▪



Ryan Waller Athletic Facility



## Protect Your Concrete with Scofield Sealers

Scofield sealers protect the surface, enhance the appearance of colored concrete, and may provide protection against contamination and chemical attack by imparting a film-forming layer on the surface of the concrete. Consult a Scofield Concrete Curing & Sealing Guide.

SCOFIELD® Integral Color SG is a cost-effective product that permanently colors concrete and other cementitious materials. It is packaged in easy to use repulpable bags that can be used to color manufactured concrete products such as colored concrete block, brick, paver, or precast structures.



# SCOFIELD® Integral Color SG

## ■ Integral Concrete Color Chart A-362 ■



A SIKA BRAND

Many things can affect the appearance of color. For best color matching results, a representative job site sample should be cast using materials and finishing techniques that will be used on the project.

Colors shown on this chart represent formulations using medium gray cement and sealed with solvent based SCOFIELD® CureSeal™ 700. Variations can be expected due to differences in cement, aggregates and method of application. **NOTE:** When using lower color loadings, such as one bag per two yards, the color of the cement and sand have a more pronounced influence on the final color resulting in a greater chance of color variation.

**3** CONCRETE  
**9** FINISHES

1 BAG PER 2 YARDS

1 BAG PER 1 YARD

2 BAGS PER 1 YARD

3 BAGS PER 1 YARD



078 Chaparral



Pueblo Brown



Calandria Brown



Gravel Brown



084 Hay Fields



Wheat Fields



Amber Fields



Rust Fields



117 Spring Rose



Summer Rose



Winter Rose



Red Rose



130 Latte



Chocolate



Cappuccino



Hot Cocoa



134 Southern Clay



Santa Fe Clay



Roman Clay



Ceramic Clay



160 Sunset Red



Sunrise Red



Red Brick



Iron Brick



237 Sand Buff



Coronado Buff



Egyptian Dunes



Summer Dunes



447 Prairie Beige



Schooner Beige



Moroccan Beige



Horizon Beige



641 Taos Tan



Aztec Tan



Southwest Tan



New Mexico Tan



677 Soft Chestnut



Ripe Chestnut



Roast Chestnut



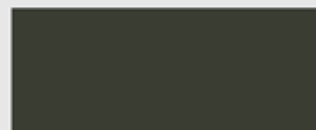
Plum Chestnut



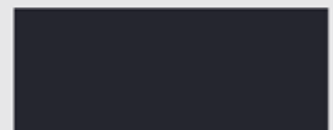
860 Metallic Gray



Cobble Gray



London Gray



Thunder Gray

# Concrete Color Hardener

for new concrete pours only

**Concrete color hardener** is a powdered coloring product that is broadcast onto the surface of freshly placed concrete, and then troweled in to create a uniform, consistent colored appearance. It generally provides a more solid looking color compared to integral color, and is available in a range of permanent, high-opacity, vivid colors. It is also the recommended base color for patterned or textured concrete.

Color hardened concrete has performance advantages. Due to select aggregates and other technology, color hardened concrete has a higher compressive strength at the surface, making it suitable for even vehicular traffic. It is commonly used for warehouse, industrial, commercial, hardscapes, splash pads, and parks.

## Scofield Concrete Color Hardener systems:

- LITHOCHROME® Color Hardener
- EMERCHROME® SC Color Hardener (should be lightly etched or sandblasted)



Contact Scofield Customer Service at 800-800-9900, or visit us on the web at [www.scofield.com](http://www.scofield.com).



# LITHOCHROME® Color Hardener

and SCOFIELD® Texturetop™ Pro Stamp & Stencil Grade

## ■ Concrete Color Chart A-132CH ■



Liberty Center



### Protect Your Concrete with Scofield Sealers

Scofield sealers protect the surface, enhance the appearance of colored concrete, and may provide protection against contamination and chemical attack by imparting a film-forming layer on the surface of the concrete. Consult a Scofield Concrete Cures & Sealers Guide.

LITHOCHROME® Color Hardener is an abrasion resistant color hardener ideal for areas of high volume pedestrian or vehicular traffic. Use to permanently color, harden, and improve the abrasion resistance of walkways, building entrances, foyers, stairs, loading docks, parking structures, food courts, drive-thru lanes, and crosswalks.

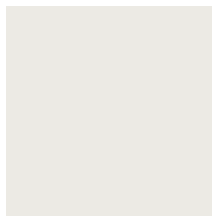
# LITHOCHROME® Color Hardener

and SCOFIELD® Texturetop® Pro Stamp & Stencil Grade

## ■ Concrete Color Chart A-132CH ■



**A-53** Arizona Tan



**A-72** Ash White\*



**A-89** Blue Smoke+\$\$



**A-59** Beige Cream\*



**A-63** Blush Beige\*



**A-26** Brick Red



**A-52** Burberry Beige\*



**A-33** Classic Gray



**A-27** Dark Red



**A-21** Deep Charcoal



**A-25** La Crescenta Brown



**A-75** Oyster White\*



**A-55** Pecan Tan



**A-57** Platinum Gray



**A-24** Russet



**A-85** Muted Green



**A-50** Slate Gray



**A-54** Smoke Beige\*



**A-51** Steadman Buff



**A-78** Stone Gray\*



**A-29** Terra Cotta



**A-65** Landmarks Gray



**A-31** Walnut



**A-58** Swiss Coffee



# EMERCHROME® SC Color Hardener

Dry Shake Color Hardener

- Concrete Color Chart A-182 ■



The Embarcadero



## Protect Your Concrete with Scofield Sealers

Scofield sealers protect the surface, enhance the appearance of colored concrete, and may provide protection against contamination and chemical attack by imparting a film-forming layer on the surface of the concrete. Consult a Scofield Concrete Cures & Sealers Guide.

EMERCHROME® SC Color Hardener is an abrasion resistant dry shake color hardener comprised of specialty aggregates that produce dense, hard surfaces. Decorative effects can be created by lightly sandblasting fully cured applications, or fine etching with surface retarder to reveal natural emery or silicon carbide fine aggregates.

# EMERCHROME<sup>®</sup> SC Color Hardener

Dry Shake Color Hardener

## ■ Concrete Color Chart A-182 ■



**4807** SFB Gray



**2543** Landmarks Gray



**4808** SFB Charcoal



**A-27** Dark Red



**A-85** Muted Green



**1511** Denim Blue



**4948** Smoke Beige



**0266** Ash White



**A-59** Beige Cream

Prior to beginning the job, consult the appropriate Scofield TDS EMERCHROME SC Color Hardener.





# Concrete Stains

for new or existing cured concrete

**Concrete stain** is used to color the surface of an existing concrete slab. It is typically sprayed onto the prepared surface, and sometimes worked in with a brush. There are a number of different types of concrete stain on the market, but they are generally divided into two types: acid stain and water-based stain.

Concrete that is colored with acid stain has a unique, variegated appearance, and the color is permanent. Available in a limited palette of browns, greens and blacks, acid stain chemically reacts with the concrete and becomes part of the concrete surface. No two acid stained floors will be alike in appearance. Acid stained floors can look either antiqued or contemporary, depending on the design of the surrounding environment.

An alternative to acid stains are water-based stains. These high-performance, low-odor stains offer more color selections than acid stain, including vibrant reds, purples, yellows and blues. One benefit of water-based stains is that the area that is stained can be more quickly returned to service. The use of a protective sealer is important to maintain the color.

## Scofield Concrete Stain systems:

- LITHOCHROME® Chemstain® Classic (acid stain)
- LITHOCHROME® Tintura™ Stain (water-based stain)
- SCOFIELD® Revive™ Exterior Concrete Stain (for color restoration)



Contact Scofield Customer Service at 800-800-9900, or visit us on the web at [www.scofield.com](http://www.scofield.com).



# LITHOCHROME® Chemstain® Classic

Contemporary and Timeless, The Original Concrete Acid Stain

## ■ Concrete Stain Color Chart A-412 ■



Harpeth Hall Athletic Center



### Protect Your Floors with Scofield Concrete Sealers

Scofield sealers protect the surface, enhance the appearance of colored concrete, and may provide protection against contamination and chemical attack by imparting a film-forming layer on the surface of the concrete. Consult a Scofield Concrete Cures & Sealers Guide.

LITHOCHROME® Chemstain® Classic is a ready-to-use, penetrating acid stain that chemically reacts with the surface of cured concrete to produce a unique and permanent appearance. Chemstain can be applied full strength, blended, or diluted for a multitude of creative color effects.



# LITHOCHROME® Chemstain® Classic

Contemporary and Timeless, The Original Concrete Acid Stain

## ■ Concrete Stain Color Chart A-412 ■



**CS-2** Padre Brown



**CS-16** Faded Terracotta



**CS-15** Antique Amber



**CS-12** Weathered Bronze\*



**CS-11** Fern Green\*



**CS-13** Copper Patina\*



**CS-1** Black



**CS-14** Dark Walnut



\*Will darken or blacken permanently if exposed to excessive moisture. These colors are intended for interior application only. Prior to beginning the job, consult the LITHOCHROME® Chemstain® Classic Technical Data Sheet and SDS at [www.scofield.com](http://www.scofield.com).



# LITHOCHROME® Tintura™ Stain

Water-Based Concrete Stain in 24 Vibrant or Subtle Colors

## ■ Concrete Stain Color Chart A-422 ■



Forest County Potawatomi Visitor Center



### Protect Your Floors with Scofield Concrete Sealers

Scofield sealers protect the surface, enhance the appearance of colored concrete, and may provide protection against contamination and chemical attack by imparting a film-forming layer on the surface of the concrete. Consult a Scofield Concrete Cures & Sealers Guide.

LITHOCHROME® Tintura™ Stain is a high performance low-odor, reactive polymer stain for coloring interior or exterior vertical or horizontal concrete and other cementitious surfaces. It can be used to gently tone surfaces, simulate the variegated effects of reactive acid stains, or applied full opacity for a paint like appearance.



# LITHOCHROME<sup>®</sup> Tintura<sup>™</sup> Stain

Water-Based Concrete Stain in 24 Vibrant or Subtle Colors

## ■ Concrete Stain Color Chart A-422 ■



**0510** Black



**1406** Old Hickory



**4663** Saxon Bronze



**5050** Spanish Tile



**2433** Pink Dawn



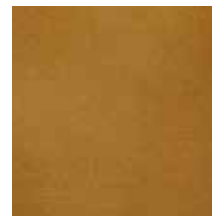
**1750** Evergreen



**2911** Meadow Green



**1516** Devon Brown



**2047** Autumn Honey



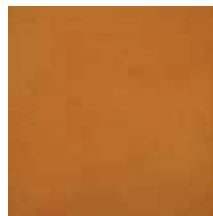
**6011** Whisper Pink



**4364** Razz-ma-tazz Red



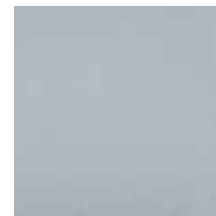
**2463** Kelly Green



**1108** Bright Orange



**1122** Capri Teal



**6010** Blue Haze



**2004** Vivid Violet



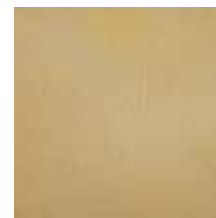
**2077** Mustard Yellow



**5566** Zenith Blue



**2055** Toucan Green



**6007** Wheat Grain



**2626** Light Gray



**3950** Plum Parfait



**0289** Azure Blue



**5131** Spring Green



# SCOFIELD® Revive™ Exterior Stain

and SCOFIELD® Revive™ Colored Sealer

■ Concrete Color Chart A-442 ■



## Protect Your Floors with Scofield Concrete Sealers

Scofield sealers protect the surface, enhance the appearance of colored concrete, and may provide protection against contamination and chemical attack by imparting a film-forming layer on the surface of the concrete. Consult a Scofield Concrete Cures & Sealers Guide.

SCOFIELD® Revive Exterior Concrete Stain delivers a flat low-luster finish with excellent weather, water, slip, and ultraviolet light resistance, without significant film build or developing a paint-like appearance. It was designed to add new color to concrete or renew color of aged concrete surfaces.



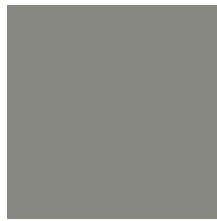
# SCOFIELD® Revive™ Exterior Stain

and SCOFIELD® Revive® Colored Sealer

## Concrete Color Chart A-442



**C-12** Mesa Beige\*



**C-31** Shadow Slate



**C-25** Sombrero Buff



**C-20** Limestone



**5183** Stone Gray



**C-27** Westwood Brown\*



**A-59** Beige Cream\*



**C-14** French Gray\*



**C-32** Quarry Red



**C-26** Antique Cork\*



**C-21** Adobe Tan\*



**1266** Cool Gray\*



**0288** Autumn Beige\*



**A-11** Concrete Gray



**A-26** Brick Red



**A-51** Steadman Buff



**A-55** Pecan Tan\*



**C-24** Charcoal\*



**A-57** Platinum Gray\*



**C-34** Dark Gray

\*SCOFIELD Revive Colored Sealer only available in these colors, as well as 0510 Black.

**Note:** SCOFIELD Revive Colored Sealer IS NOT VOC COMPLIANT IN CALIFORNIA



# Ground and Polished Concrete

for new or existing cured concrete

**Polished concrete** has been around for a number of years, but was mostly relegated to warehouse floors. With the introduction of concrete dye and specific finishing options, this durable and low-maintenance floor has entered the architectural mainstream.

Ground and polished concrete is a mechanical process of cutting or honing an existing concrete slab, adding dye (color) and a densifier, and then polishing to the desired level of gloss. Densifying products are used to harden the surface by filling the naturally existing surface pores with additional calcium silicate hydrate (CSH), a naturally occurring mineral in concrete that gives concrete its strength.

#### **Scofield Polished Concrete systems:**

- SCOFIELD® Formula One™ Liquid Dye Concentrate
- SCOFIELD® Formula One™ Lithium Densifier (increases durability of the surface)
- SCOFIELD® Formula One™ Guard-W (helps deliver higher gloss levels)
- SCOFIELD® Formula One™ Finish Coat (provides water repellancy)



Contact Scofield Customer Service at 800-800-9900, or visit us on the web at [www.scofield.com](http://www.scofield.com).



# SCOFIELD® Formula One™

Polished Concrete System for Architectural Floors

## ■ Specification Guide ■



Henderson-Hopkins School



### Superior Concrete Floor Protection with Proguard™

Protect your floor from the trades by using SCOFIELD® Proguard™ Duracover™. Proguard Duracover is a flexible, durable material that will protect interior flooring from harsh construction environments both before and after installation. More at [www.scofield.com](http://www.scofield.com).

The SCOFIELD® Formula One Polished Concrete System delivers an attractive architectural floor that is both durable and low maintenance. This reference guide will help with the selection of the four primary components of a polished concrete floor: grade, class, color, and finish.

# SCOFIELD® Formula One™

Polished Concrete System for Architectural Floors

## 1. Choose Grade

The **Grade** of your SCOFIELD® Formula One™ polished concrete floor refers to the depth of cut, or “grind” that is performed on the concrete. The deeper the cut, the more aggregate will be exposed. Floor or location characteristics may limit the depth of cut that may be performed.

### ■ GRADE 1

The SCOFIELD® Formula One™ Grade 1 floor typically exposes only the sand particles in the concrete. The Grade 1 finish is considered a “creamy looking” surface and has the most consistent appearance.



### ■ GRADE 2

The SCOFIELD® Formula One™ Grade 2 floor typically exposes a spattering of aggregate in the concrete. The Grade 2 finish is most often chosen to give the appearance of an aged surface.



### ■ GRADE 3

The SCOFIELD® Formula One™ Grade 3 floor typically exposes the greatest amount of larger aggregate in the concrete. The Grade 3 finish is most often chosen when the substrate has been seeded with custom aggregate.



## 2. Choose Class

The **Class** of your SCOFIELD® Formula One™ polished concrete floor refers to the level of polish that is performed on the floor. The higher the level of polish, the more glossy or shiny the floor will appear. Generally speaking, the higher the gloss, the more expensive the process will be.

### ■ CLASS 1

The SCOFIELD® Formula One™ Class 1 floor (specified as 400 grit) results in a surface that exhibits a low level of specular reflectivity. Simply put, this is the least shiny floor option.



### ■ CLASS 2

The SCOFIELD® Formula One™ Class 2 floor (specified as 800 grit) results in a surface that exhibits a moderate level of specular reflectivity. This floor will be reflective, but will not be “mirror-like”.



### ■ CLASS 3

The SCOFIELD® Formula One™ Class 3 floor (specified as 1500 grit) results in a surface that exhibits a high level of specular reflectivity and the most mirror-like surface.





# Polished Concrete Color

Compatible Dyes for Formula One™ Polished Concrete Floors

## 3. Choose COLOR!

SCOFIELD® Formula One™ Liquid Dye Concentrate is a penetrating, translucent dye concentrate designed to color interior concrete surfaces prior to being sealed, densified, or polished. It is ideal for use on older interior concrete slabs, slabs where acid stain cannot be used, or areas that must be quickly returned to service. For projects where a natural concrete color is desired, G388 Soft Gray is recommended.



**4135 Merlot**



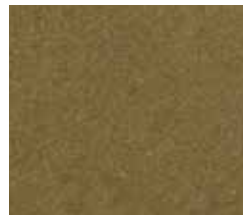
**1395 Driftwood**



**1435 Inca Gold**



**3935 Ponderosa**



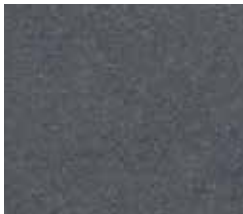
**1335 Beach Sand**



**4405 Rustic Bark**



**2045 Georgia Clay**



**3055 Storm Cloud**



**1445 Cold Steel**



**2145 Grecian Gray**



**4915 Slash Pine**



**1330 Aquamarine**



**1385 Douglas Fir**



**5195 Snow Pea**



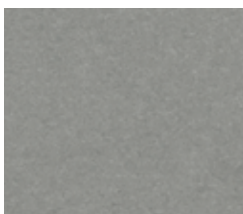
**1995 Frost Green**



**1705 Emerald Green**



**1275 Bahama Blue**



**G388 Soft Gray**



**0510 Black**



**1255 Aztec Red**



**1245 Leather**



**6085 Winter Sunset**

Prior to beginning the job, consult the appropriate SCOFIELD Formula One Tech-Data sheets.

Contact Scofield Customer Service at 800-800-9900, or visit us on the web at [www.scofield.com](http://www.scofield.com).

# Polished Concrete Finishes

Densify, Enhance and Protect Your Formula One™ Floor

## 4. Choose Finish

■ **SCOFIELD® Formula One™ Lithium Densifier MP** is the bedrock of the Scofield Polished Concrete System. It is a penetrating, semi-transparent liquid that rapidly produces a terrazzo-like floor surface with improved abrasion resistance, greater gloss retention, higher surface compressive strength and reduced dusting. SCOFIELD® Formula One™ Lithium Densifier MP is a low VOC, cost-effective treatment that will extend the nominal service life of concrete floors, and reduce ongoing floor maintenance costs. Following the selection of grade, class, color, and SCOFIELD® Formula One™ Lithium Densifier MP, choose your finish option below:

■ **SCOFIELD® Formula One™ Guard-W** is used to guard and protect ground and polished concrete floors after treatment with **SCOFIELD® Formula One™ Lithium Densifier MP**. It enhances the color, and provides a measure of protection against water intrusion.

SCOFIELD® Formula One™ Guard-W is the primary finish for the Scofield Formula One Polished Concrete System. Its organo-silicate hybrid composition combines the densifying and abrasion resistant properties of lithium silicate, with the stain blocking properties found only in self-crosslinking organic systems.



SCOFIELD® Formula One™ Guard-W's water-based finish was specially developed to enhance gloss, deliver a fast turnaround time, produce excellent reflective clarity, and provide for easier floor maintenance.

■ **SCOFIELD® Formula One™ Finish Coat** is used on ground and polished concrete floors after treatment with **SCOFIELD® Formula One™ Lithium Densifier MP** to reduce porosity and to protect the surface by improving chemical resistance and reducing water permeability.

SCOFIELD® Formula One™ Finish Coat is a VOC-free treatment that is nontoxic, easy to maintain, and environmentally sound, with a moderate sheen. SCOFIELD® Formula One™ Finish Coat does not contain sodium silicate or potassium silicate.





# Concrete Overlays

for resurfacing existing cured concrete

If you are dealing with an existing concrete surface that you want to add texture or pattern to, you can often use a cementitious **concrete overlay** to do it. Overlays are poured onto a suitable (and suitably prepared) concrete substrate, and then imprinted with a pattern tool or texture skin. The overlay is usually colored with a color pack.

Because of their relatively shallow depth, overlays cannot be stamped with patterns that have a deep grout line. Seamless texturing skins are often a better choice with this type of material, and you can also use stencils to achieve patterned effects.

## Scofield Concrete Overlay systems:

- SCOFIELD® Texturetop® Pro Stamp Grade
- SCOFIELD® Texturetop® Pro Stencil Grade
- SCOFIELD® Texturetop® Pro Primer (required for use with Stamp and Stencil Grade)





# SCOFIELD® Texturetop™ Pro

A Premium Quality Cementitious Topping System

## ■ Concrete Overlay Selection Guide ■



Castro Pool Deck



### Protect Your Concrete with Scofield Sealers

Scofield sealers protect the surface, enhance the appearance of colored concrete, and may provide protection against contamination and chemical attack by imparting a film-forming layer on the surface of the concrete. Consult a Scofield Concrete Cures & Sealers Guide.

SCOFIELD® Texturetop® Pro creates an abrasion resistant surface suitable for pedestrian and automobile traffic. It is an ideal system for restoring worn or color-blemished concrete, out of level surfaces or correcting construction errors.



# Texturetop<sup>™</sup> Pro Stamp Grade

for Resurfacing, Texturing, and Imprinting Exterior or Interior Concrete Floors or Hardscapes.



## SCOFIELD<sup>®</sup> Texturetop<sup>®</sup> Pro Stamp Grade

SCOFIELD<sup>®</sup> Texturetop<sup>®</sup> Pro Stamp Grade is a polymer modified cementitious topping formulated for resurfacing structurally sound, non-moving concrete floors and exterior hardscapes. The overlay provides a durable surface suitable for stamping with LITHOTEX<sup>®</sup> Pavecrafters<sup>®</sup> Stamping Tools or textured with texture Rollers. Properly applied to clean and sound concrete, Texturetop<sup>®</sup> Pro Stamp Grade is freeze/thaw resistant. New concrete must be fully cured before applying the product. The cured overlay surface should be sealed for ease of cleaning, particularly on interior floors. SCOFIELD<sup>®</sup> Texturetop<sup>®</sup> Pro Primer must be used with this product.

- Pre-packaged material is mixed on the job site with clean water
- May be stained by applying LITHOCHROME<sup>®</sup> Tintura<sup>™</sup> Stain or LITHOCHROME<sup>®</sup> Chemstain<sup>®</sup> Classic
- Coverage rates (one 55 lb. (25 kg) unit) approximately:
  - 24 sq. ft. at 1/4" thick (2.2 m<sup>2</sup> at 6 mm thick)
  - 16 sq. ft. at 3/8" thick (1.5 m<sup>2</sup> at 9 mm thick)
  - 12 sq. ft. at 1/2" thick (1.1 m<sup>2</sup> at 13 mm thick)
- 21-day compressive strength is 5250 psi (36.2 MPa)
- Seal with SCOFIELD<sup>®</sup> Cureseal-W<sup>™</sup> after curing for 72 hours



# Texturetop<sup>™</sup> Pro Stencil Grade

for Resurfacing Structurally Sound, Non-Moving Concrete Floors, Walls, and Exterior Hardscapes.

## SCOFIELD<sup>®</sup> Texturetop<sup>®</sup> Pro Stencil Grade

SCOFIELD<sup>®</sup> Texturetop<sup>®</sup> Pro Stencil Grade is a precise blend of graded sand, cement, and polymer, which allow for thin applications. It can be smooth troweled, broom finished, or applied using a splatter brush or hopper gun for a knock down finish with LITHOTEX<sup>®</sup> Pavecrafters<sup>®</sup> Stencils. The material can be finished for enhanced slip resistance. New concrete must be fully cured before applying the product. The cured overlay surface should be sealed for ease of cleaning, particularly on interior floors. Use of SCOFIELD<sup>®</sup> Texturetop<sup>®</sup> Pro Primer is recommended except in installations that require the use of adhesive backed stencils.



- Pre-packaged material is mixed on the job site with clean water
- May be stained by applying LITHOCHROME<sup>®</sup> Chemstain<sup>®</sup> Classic
- Coverage rates (one 55 lb. (25 kg) unit) approximately:
  - 96 sq. ft. at 1/16" thick (9 m<sup>2</sup> at 1.5 mm thick)
  - 48 sq. ft. at 1/8" thick (4.5 m<sup>2</sup> at 3 mm thick)
  - 32 sq. ft. at 3/16" thick (3 m<sup>2</sup> at 4.8 mm thick)
- 21-day compressive strength is 5860 psi (40.4 MPa)
- Seal with SCOFIELD<sup>®</sup> Cureseal<sup>™</sup> 700 after curing for 72 hours
- Read all appropriate SCOFIELD Texturetop Pro TDS prior to beginning





# Texturetop<sup>™</sup> Pro Primer

Enhances Adhesion and Workability

## SCOFIELD<sup>®</sup> Texturetop<sup>®</sup> Pro Primer

SCOFIELD<sup>®</sup> Texturetop<sup>®</sup> Pro Primer is a bonding agent for use with SCOFIELD<sup>®</sup> Texturetop<sup>®</sup> Pro Stamp Grade, a cementitious overlay for the resurfacing of interior or exterior concrete. As an option, it may also be used with SCOFIELD<sup>®</sup> Texturetop<sup>®</sup> Pro Stencil Grade. It is a concentrated ethyl vinyl acetate (EVA) copolymer liquid, that when properly mixed and applied, enhances the adhesion, workability and curing of cementitious overlays. It is a white liquid that dries to a clear film. For interior or exterior and horizontal or vertical use.

- Mix a 1 gal. (3.8 L) unit 1:1 with clean, cool water
- Recommended coverage rate is 200 sq. ft. per mixed gallon (4.9 m<sup>2</sup>/L)
- Apply with a short-nap roller, brush, or hand-pump sprayer
- Allow Primer to dry 1-3 hours to a clear, tack free film before application of the second coat
- Once the primer is dry, it must be protected from moisture prior to the application of SCOFIELD<sup>®</sup> Texturetop<sup>®</sup> Pro Stamp Grade or SCOFIELD<sup>®</sup> Texturetop<sup>®</sup> Pro Stencil Grade
- Read all appropriate SCOFIELD Texturetop Pro TDS prior to beginning



# Concrete Patterns and Textures

for new pours or overlays only

**Stamped concrete** refers to the technique of using pattern or texturing tools to create a concrete surface that mimics the appearance of brick, stone, wood, slate, tile or other materials. Finishing concrete in this way is a more cost-effective option to using the actual materials which are often expensive. In addition to the stamp tools, stamped concrete requires the use of two or three coloring products to complete the desired effect.

Another option for a textured concrete surface is to use a **Concrete Surface Retarder**. This is the technique used when you see pebbles, rocks or aggregate at the surface, although lighter etches can be achieved. The surface retarder is sprayed onto the surface of the freshly placed concrete, where it delays the set time of the surface paste. This allows the surface paste to be washed off, revealing a specific depth of aggregate at the surface.

## Scofield Concrete Pattern and Texture systems:

- LITHOTEX® Pavecrafters® Pattern Tools and Texture Skins
- LITHOCHROME® Antiquing Release Pro (for use with LITHOTEX® Pavecrafters®)
- LITHOTIQUE™ Antiquing Agent (accent color for stamped concrete surfaces)
- LITHOCAST™ Surface Retarder (for exposed aggregate, six formulations available)





# LITHOTEX® Pavecrafters®

Concrete Imprinting Tools and Embossing Skins

## ■ Concrete Pattern and Texture Guide ■



### Realistic looking patterns and textures for concrete hardscapes



#### Enhance and Protect Concrete with Scofield Sealers

Scofield sealers protect the surface, enhance the appearance of colored concrete, and may provide protection against contamination and chemical attack by imparting a film-forming layer on the surface of the concrete. Consult a Scofield Concrete Cures & Sealers Guide.

A LITHOTEX® Pavercrafter® Stamp Tool is an integral part of a system of matched concrete and overlayment pattern and embossing tools used to transform the surface texture of freshly placed architectural concrete flatwork into patterns that mimic other building materials and artistic patterns.



# LITHOTEX<sup>®</sup> Pavecrafters<sup>®</sup>

Concrete Imprinting Tools and Embossing Skins for Realistic Looking Patterns and Textures



**Fractured Slate**  
Embossing Skin



**River Stone**  
Embossing Skin



**Rock Salt**  
Embossing Skin



**Fractured Earth**  
Embossing Skin



**Limestone**  
Embossing Skin



**Natural Stone**  
Sculptured Granite



**Canyon Stone**  
Random Interlocking



**London Slate**  
Random Interlocking



**English Yorkstone**  
Random Interlocking



**Pennsylvania Slate**  
Random Interlocking



**Vermont Slate**  
European Fan

Choose from more than 200 distinctive tools. Scofield's full professional concrete imprinting system includes border tools, floppy tools, texturing tools and interlocking pattern-matched tools. View more tools at [www.scofield.com](http://www.scofield.com).



# Make A Great First Impression!

Use the Complete Scofield System of Color Hardener, Antiquing Release, Antiquing Agent and Sealer



**Cobblestone**  
Random Interlocking



**Stone Tile**  
Stacked Bond



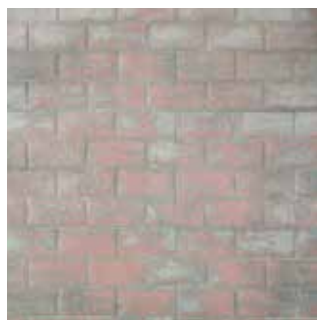
**Fractured Slate**  
Rattanweave



**Cobblestone**  
Running Bond



**Ashler Stone**  
Embossing Skin



**New Brick**  
Running Bond



**Used Brick**  
Running Bond



**New Brick**  
Herringbone



**Used Brick**  
Herringbone



**Limestone**  
European Fan



**Ashler Stone**  
Random Interlocking

A virtually unlimited variety of appearances can be achieved by using the different Scofield coloring systems, including release agents and concrete stains with LITHOTEX Pavecrafters pattern tools and embossing skins. View more on back.

# LITHOTEX® Pavecrafters®

Concrete Imprinting Tools and Embossing Skins



**Cobble Tile 6"**  
Stacked Bond



**Clay Tile**  
Stacked Bond



**Old Belgium Stone**  
Running Bond



**Cobblestone**  
Stacked Bond



**Pine**  
Interlocking Plank



**Weathered Wood**  
Interlocking Plank



**River Pebbles**  
Random Interlocking



**New Brick**  
Basketweave

## Use the Complete Scofield Stamped Concrete System for Maximum Success!

■ **LITHOCHROME® Color Hardener** is an engineered dry shake color hardener with superior compressive strength and abrasion resistance. It's the perfect base color for stamped concrete, and is available in 24 standard colors.

■ **LITHOCHROME® Antiquing Release Pro** is a color powdered bond breaker used with stamping mats, texturing skins and texture rollers. It provides accent colors that complement or contrast with the underlying concrete surface, and enhance the transfer of the detailed pattern and texture.

■ **LITHOTIQUE™ Antiquing Agent** will impart a secondary color to the surface, and visually enhance its texture. It can be applied to hardened, newly stamped concrete, unsealed existing stamped concrete and unsealed SCOFIELD® Texturetop® Pro Stamp Grade.

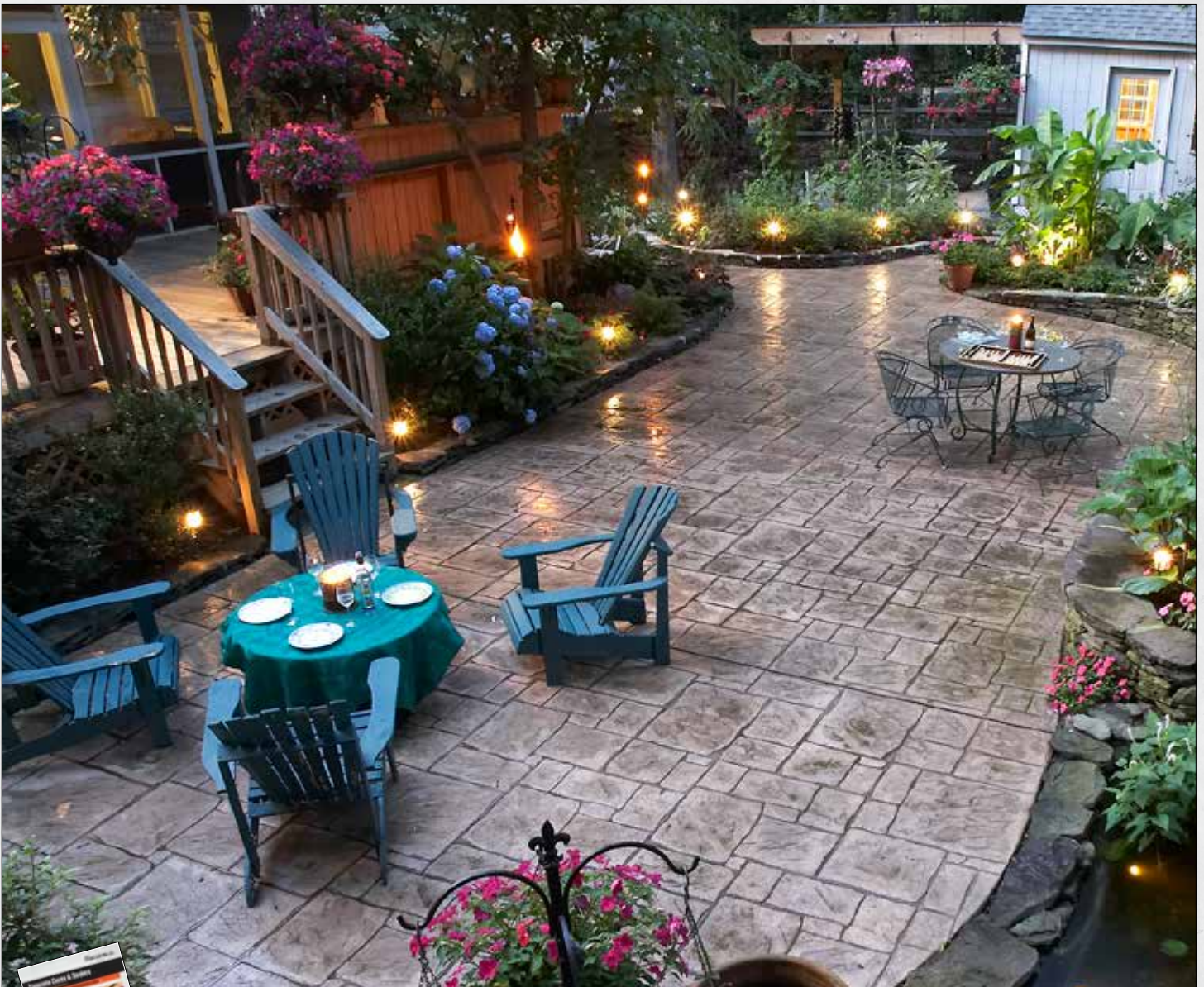
■ **SCOFIELD® Cureseal™ 700** is a solvent-based, VOC compliant, non-yellowing, curing and sealing compound for newly poured and existing concrete surfaces. The product is formulated for curing and sealing uncolored concrete, integrally colored concrete, color hardened concrete, stamped or stenciled concrete, and cementitious overlays.



# LITHOCHROME® Antiquing Release Pro

and LITHOTIQUE™ Antiquing Agent

■ Concrete Color Chart A-136LA ■



Twinnings Backyard



## Protect Your Concrete with Scofield Sealers

Scofield sealers protect the surface, enhance the appearance of colored concrete, and may provide protection against contamination and chemical attack by imparting a film-forming layer on the surface of the concrete. Consult a Scofield Concrete Cures & Sealers Guide.

LITHOCHROME® Antiquing Release is an odorless, high-performance, powder stamp tool release that adds color accents as it eliminates the suction created when stamp tools are lifted from freshly placed wet cementitious material. This allows artisans to create concrete that simulates a variety of natural materials.

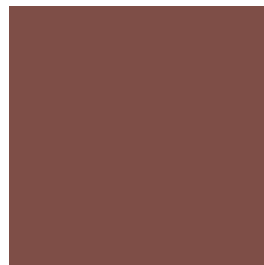
# LITHOCHROME® Antiquing Release Pro

and LITHOTIQUE™ Antiquing Agent

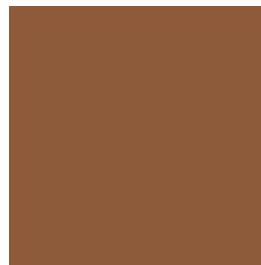
## ■ Concrete Color Chart A-136LA ■



**A-21** Deep Charcoal



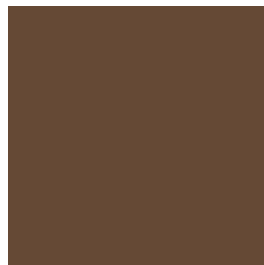
**A-24** Russet



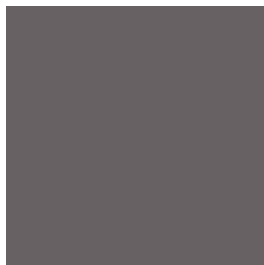
**A-25** La Crescenta Brown



**A-26** Brick Red



**A-31** Walnut



**A-33** Classic Gray



**A-50** Slate Gray



**A-51** Steadman Buff



**A-54** Smoke Beige



**A-55** Pecan Tan



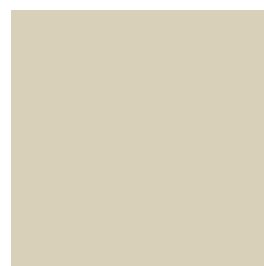
**A-57** Platinum Gray



**A-58** Swiss Coffee



**A-59** Beige Cream



**A-75** Oyster White





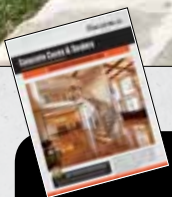
# LITHOCAST<sup>™</sup> Surface Retarder

Color-Coded Surface Set Retarder For Exposed Aggregate Finishes

## ■ Exposed Aggregate Depth Selection Chart ■



Inman Residence



### Protect Your Concrete with Scofield Sealers

Scofield sealers protect the surface, enhance the appearance of colored concrete, and may provide protection against contamination and chemical attack by imparting a film-forming layer on the surface of the concrete. Consult a Scofield Concrete Cures & Sealers Guide.

LITHOCAST<sup>®</sup> Surface Retarder is a water-based, biodegradable, low odor top surface retarder. Applied to the surface of fresh concrete, LITHOCAST<sup>®</sup> Surface Retarder allows for the production of exposed aggregate flatwork on curbs, sidewalks, driveways, patios, pool decks, tilt-up and precast panels, and more.



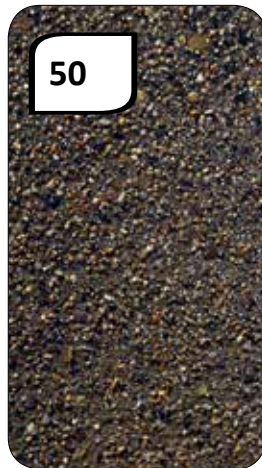
# LITHOCAST™ Surface Retarder

Color-Coded Surface Set Retarder For Exposed Aggregate Finishes

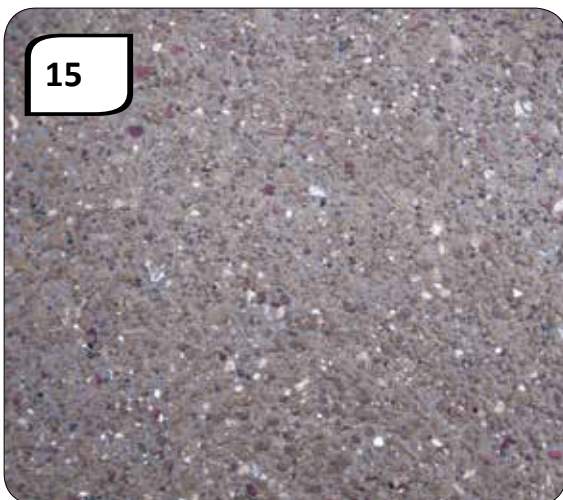


## LITHOTEX™ Surface Retarder

LITHOCAST™ Surface Retarder is a water-based, biodegradable, low odor top surface retarder. Applied to the surface of fresh concrete, LITHOCAST™ Surface Retarder chemically delays the set of the surface mortar while allowing the underlying concrete to harden normally. This allows time for washing the surface, producing exposed aggregate flatwork, with subtle and varying reveals of texture and color. Apply LITHOCAST® Surface Retarder on gray concrete or concrete colored with CHROMIX® Admixtures for Color-Conditioned® Concrete. Use on poured-in-place flatwork: curbs, sidewalks, driveways, patios, pool decks, tilt-up and precast panels, and most horizontal concrete installations



- Fully cured surface is attractive and slip resistant
- VOC compliant (<10 g/L)
- Available in 5 gallon pails color-coded with dye
- Dye evaporates after application and will not color concrete
- Float or broom finish allows LITHOCAST® Surface Retarder to better penetrate the surface compared to hard-troweled concrete
- Do not apply the material until bleed water has dissipated
- Approximate coverage is 175–300 sq ft<sup>2</sup>/gal (4.3–7.4 m<sup>2</sup>/L)
- Apply with a pump-up sprayer, brush, or roller
- Apply at full strength. Do not dilute
- Coverage will vary with surface texture and application method





# Exposed Aggregate Finish

Water-Based, Biodegradable, Low Odor Top Surface Retarder

Formulation:	Tint Color:	Finish:	Aggregate Exposure:
LITHOCAST™ Surface Retarder 03	White	Medium acid wash finish	Medium sand texture
LITHOCAST™ Surface Retarder 05	Light Blue	Sand finish	Coarse sand texture
LITHOCAST™ Surface Retarder 15	Dark Green	Light sand blast texture	1/8" to 1/4" aggregate exposure
LITHOCAST™ Surface Retarder 50	Dark Blue	Heavy sand blast texture	3/8" to 1/2" aggregate exposure
LITHOCAST™ Surface Retarder 75	Yellow	Full depth exposure	Small aggregate 3/8"
LITHOCAST™ Surface Retarder 125	Light Green	Full depth exposure	Medium aggregate 1/2"

Review the entire LITHOCAST Top Surface Retarder TDS prior to beginning project.



# Concrete Cures and Sealers

for protecting concrete of all types

In order to bring out the most beautiful depth of color in any architectural concrete floor or hardscape, the use of a **compatible concrete sealer** is a must. Not only do sealers help make the color pop, they also help by providing protection against a variety of hazards including spills, water intrusion and other forms of abuse. Scofield manufactures a complete line of compatible solvent-based and water-based sealers and curing and sealing compounds. Ask your Scofield rep which Scofield Sealer is recommended based on your project needs and circumstances.

## Scofield Concrete Cures, Sealers and Floor Protection systems:

- SCOFIELD® CureSeal™ 700
- SCOFIELD® CureSeal™ 350
- SCOFIELD® SelectSeal™ Plus
- SCOFIELD® CureSeal-W™
- LITHOCHROME® Colorwax™ (for use with CHROMIX® Admixtures)
- SCOFIELD® Repello®
- SCOFIELD® Repello® FPS
- SCOFIELD® Proguard™ Duracover™



# Concrete Cures & Sealers

for Protecting and Enhancing Decorative Concrete

## ■ Concrete Curing and Sealing Selection Guide ■



Canapp Residence

### Superior Concrete Floor Protection with Proguard™

Protect your floor from the trades by using SCOFIELD® Proguard™ Duracover™. Proguard Duracover is a flexible, durable material that will protect interior flooring from harsh construction environments both before and after installation. More at [www.scofield.com](http://www.scofield.com).

Scofield sealers protect the surface and enhance the appearance of colored concrete. Scofield sealers may also provide protection against contamination and chemical attack, and add a measure of abrasion resistance to colored or uncolored concrete surfaces.

# Solvent-Based Cures and Sealers

## for Protecting and Enhancing Decorative Concrete

### Why use a Scofield Sealer?

Scofield Concrete Sealers protect the surface and enhance the appearance of colored concrete. Scofield sealers may provide protection against contamination and chemical attack by imparting a film-forming layer on the surface of the concrete. This protective layer also adds a measure of abrasion resistance to the concrete surface.

SCOFIELD® Cureseal™ solvent-based concrete sealers are non-yellowing curing and sealing compounds for newly poured and existing concrete surfaces. They are formulated for curing and sealing uncolored concrete, integrally colored concrete, and color hardened (shake-on) concrete, stamped or stenciled concrete, and cementitious overlays. SCOFIELD® Cureseal™ concrete sealers are recommended for use with LITHOCAST™ Surface Retarder, as well as concrete colored with CHROMIX® Admixtures for Color-Conditioned® Concrete.

#### SCOFIELD® Cureseal 700

Clear

**VOC:**

684.7 g/L

**Coverage Curing:**

300 ft<sup>2</sup>/gal (7.4 m<sup>2</sup>/L)

**Coverage Sealing:**

300-400 ft<sup>2</sup>/gal (7.4-9.8 m<sup>2</sup>/L)

**Packaging:**

5 gallon pails

■ **SCOFIELD® Cureseal™ 700** is a high solids (25%), styreneacrylic copolymer solution formulated to achieve both a protective and decorative finish as well as allow the concrete to attain full mix design properties. SCOFIELD® Cure Seal 700 is a film-forming sealer, which will assist the curing of freshly placed concrete. SCOFIELD® Cureseal™ 700 provides 24-hour spot resistance to the following chemicals with little, if any, coating effect: *antifreeze, deicing salts, foods, fruit juices, vegetable oil, vegetable extracts, diesel fuel, petroleum oil, ethanol, power steering fluid, calcium chloride, sodium chloride*. Coverage rates vary with surface texture and porosity, ambient and surface temperatures and method of application. Listed coverage rates are approximate for broom finish concrete surfaces.

#### SCOFIELD® Cureseal 350

Clear

**VOC:**

347.6 g/L

**Coverage Curing:**

300 ft<sup>2</sup>/gal (7.4 m<sup>2</sup>/L)

**Coverage Sealing:**

300-400 ft<sup>2</sup>/gal (7.4-9.8 m<sup>2</sup>/L)

**Packaging:**

5 gallon pails

■ **SCOFIELD® CureSeal™ 350** is formulated for use in regions where air quality regulations require less than 350 g/L VOC. The product is formulated for curing and sealing uncolored concrete, integrally colored concrete, color hardened (shake-on) concrete, stamped or stenciled concrete, and cementitious overlays. It is recommended for use with CHROMIX® Admixtures for Color-Conditioned® Concrete, SCOFIELD® Integral Color SG, LITHOCHROME® Color Hardener, LITHOCHROME® Chemstain® Classic, and SCOFIELD® Texturetop®. It is suitable for residential or commercial projects, exterior hardscapes, and vertical surfaces. SCOFIELD® CureSeal™ 350 is designed to meet the moisture retention properties of AASHTO M 148, ASTM C309, ASTM C1315. Listed coverage rates are approximate for broom finish concrete surfaces.

#### SCOFIELD® Traction Additive

Clear

VOC : Not applicable

■ **SCOFIELD® Traction Additive** is a lightweight synthetic coatings additive designed to increase slip resistance with minimal changes to coating color or appearance. It is easily incorporated into water or solvent based paints, stains, and sealers just prior to application. Lighter and less abrasive than ordinary sand aggregates, settling during application is reduced, a uniform appearance is more easily achieved, and surfaces are more comfortable to walk on.



# Water-Based Cures and Sealers

for Protecting and Enhancing Decorative Concrete

Scofield water-based sealers provide a more natural appearance to the concrete surface, and have little or no odor. Water-based sealers do not penetrate tight surfaces easily. They are sensitive to ambient, material, and surface temperature and moisture. All Scofield water-based Sealers are VOC compliant in all states and jurisdictions except SCAQMD. Prior to using any Scofield product, consult the appropriate TDS at [www.scofield.com](http://www.scofield.com).

## SCOFIELD® SelectSeal™ Plus

Clear

**VOC:**

90.4 g/L

**Coverage Full Strength:**

300-400 ft<sup>2</sup>/gal (7.4-9.8 m<sup>2</sup>/L)

**Coverage Thinned w/Water:**

450 ft<sup>2</sup>/gal

**Packaging:**

1 & 5 gallon pails

■ **SCOFIELD® SelectSeal™ Plus** is a high-solids, low-odor, self-crosslinking, urethane fortified acrylic sealer designed to protect interior or exterior colored or uncolored concrete. It is an excellent sealer to use over LITHOCHROME® Tintura™ Stain, LITHOCHROME® Chemstain® Classic, LITHOCHROME® Color Hardener, SCOFIELD® Texturetop® Pro, SCOFIELD® Revive™ Exterior Concrete Stain, or SCOFIELD® Formula One™ Liquid Dye Concentrate. SCOFIELD® SelectSeal™ Plus utilizes unique proprietary waterborne technology that provides superior wet slip resistance while forming a tough stain and abrasion-resistant gloss finish that is superior to most solvent-based sealers. It can be tinted to deliver a multitude of translucent colored effects, and can be used to create floors compliant to various ANSI, ASTM, NFSI, and UL traction standards. It is durable enough for exterior use and UV light stable.

## SCOFIELD® Cureseal-W™

Clear

**VOC:**

96.07 g/L

**Coverage First Coat:**

200-400 ft<sup>2</sup>/gal (4.5-9.8 m<sup>2</sup>/L)

**Coverage Second Coat:**

600-800 ft<sup>2</sup>/gal

**Packaging:**

1 & 5 gallon pails

■ **SCOFIELD® Cureseal-W™** is a concrete curing compound and sealer that reduces moisture loss and seals surfaces with an abrasion and stain resistant coating. Used during concrete placement, it reduces surface cracks and color variations caused by uneven drying and efflorescence that commonly occurs in warm, windy, or dry environments. Use on existing concrete to add an abrasion and stain resistant barrier that effectively seals, dust-proofs, and prevents staining from common foods and chemicals. SCOFIELD® Cureseal-W™ is ideal for food courts, pools, entry and walkways. It is also an abrasion-resistant topcoat over stains and dyes. It can be used to seal in color of antiquing stamp releases and stains. The low odor, water-based formulation meets ASTM C 309 requirements for Liquid Membrane-Forming Compounds for Curing Concrete.

## LITHOCHROME® Colorwax™

Color-Matched

**VOC:**

42.27 g/L

**Coverage:**

100-400 ft<sup>2</sup>/gal (2.25-10 m<sup>2</sup>/L)

**Packaging:**

1 & 5 gallon Base pails

■ **LITHOCHROME® Colorwax™** Concrete Curing Compound is a colored concrete curing compound that improves visual uniformity and reduces moisture loss from freshly placed concrete. Use during concrete placement, to reduce surface cracks and color variations caused by uneven drying and efflorescence that commonly occurs in warm, windy, or dry environments. It is not a paint or concrete sealer, and will gracefully wear, weather, and dissipate over several months without the appearance of peeling or chipped paint. LITHOCHROME® Colorwax™ reduces spider cracking in hot or dry environments, and also reduces color variations from multi-load placements, uneven curing, and efflorescence. It can also assist in keeping fresh concrete placements cooler when exposed to direct sunlight. LITHOCHROME® Colorwax™ must be tinted with LITHOCHROME® Colorwax™ Tint Cup.

# Water and Stain Repellents

for Colored or Uncolored Concrete

## SCOFIELD® Repello®

Clear

**VOC:**

99.6 g/L

**Coverage:**

300-400 ft<sup>2</sup>/gal (7.4-9.8 m<sup>2</sup>/L)

**Coverage Second Coat:**

600-800 ft<sup>2</sup>/gal

**Packaging:**

1 & 5 gallon pails

■ **SCOFIELD® Repello®** is a low visibility, film-forming surface treatment that provides extreme water and stain repellency to interior or exterior concrete surfaces. Made from a proprietary blend of non-yellowing siliconized and fluorinated acrylic polymers, it is designed to protect interior or exterior bare or previously stained concrete surfaces from water, oils, sugars, and common food stains. It is low odor, barely visible when dry, and is designed to form a thin non-appreciable stain resistant film. It can be used to create surfaces that are compliant to various ANSI, ASTM, NFSI, and UL traction standards. SCOFIELD® Repello® is ideal for food courts, pools, and entrance walkways where maximum stain resistance is required. Use on cured concrete at least 28 days old. If used over solvent based stain, stain should be allowed to cure a minimum of 12 hours to allow solvents to evaporate. If used over chemical stain or acid etched surfaces, the surface must be neutralized and rinsed thoroughly prior to application of SCOFIELD® Repello®. The low odor, water-based formulation enhances concrete and chemical stain colors.

## SCOFIELD® Repello® FPS

Clear

**VOC:**

5.1 g/L

**Coverage:**

200-400 ft<sup>2</sup>/gal (4.5-9.8 m<sup>2</sup>/L)

**Coverage over Revive\*:**

400-600 ft<sup>2</sup>/gal

**Packaging:**

1 & 5 gallon pails

■ **SCOFIELD® Repello® FPS** is a breathable, low visibility, non-flammable surface treatment that provides water and stain repellency to interior or exterior concrete surfaces. It can be used to create surfaces that are compliant to various ANSI, ASTM, NFSI, and UL traction standards. SCOFIELD® Repello® FPS is ideal for food courts, pools, and entrance walkways where maximum stain resistance is required. It renders concrete furniture stain resistant, and can be used on stamped, etched, sand blasted, or surface retarded concrete. Use on cured concrete at least 14 days old. If used over solvent based stain, stain should be allowed to cure a minimum of 12 hours to allow solvents to evaporate. If used over chemical stain or acid etched surfaces, the surface must be neutralized and rinsed thoroughly prior to application of SCOFIELD® Repello® FPS. Low odor, water-based formulation.

\*SCOFIELD® Revive™ Exterior Concrete Stain



Use LITHOTEX® Pavecrafters® concrete stamping tools and embossing skins, LITHOCHROME® Antiquing Release Pro, and a compatible Scofield Sealer to achieve realistic patterns and textures in concrete.

Visit us on the web at [scofield.com](http://scofield.com) to see our full line of quality tools.



Add color to concrete with one or more of Scofield's time-tested coloring systems, such as CHROMIX® Admixtures, LITHOCHROME® Chemstain® Classic, or LITHOCHROME Tintura™ Stain for concrete.

Contact customer service for details or assistance at 800-800-9900.





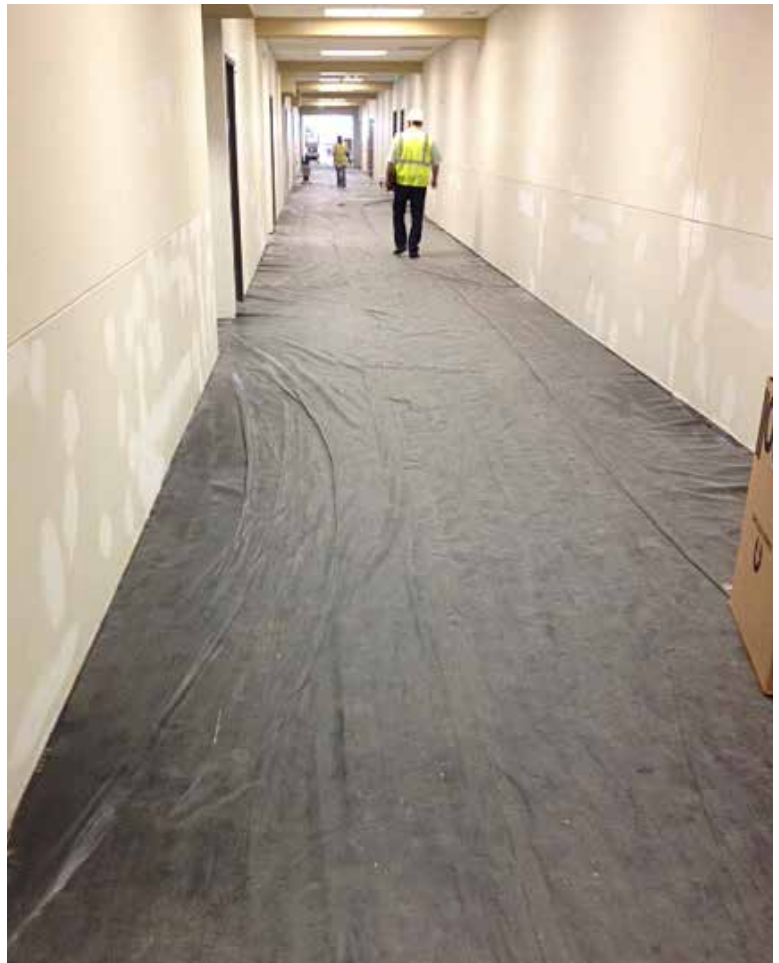
# SCOFIELD® Proguard™ Duracover™

Protect Your Floor from the Trades

## ■ Installed Floor Protection ■

### SCOFIELD Proguard Duracover:

- Oil and impact resistant.
- Suitable for interior use.
- Easy to install and remove.
- Use on Decorative Concrete, as well as Terrazzo, Ceramic Tile, Pavers, Wood, and Composite floors.



### Protect Your Concrete with Scofield Sealers

Scofield sealers protect the surface, enhance the appearance of colored concrete, and may provide protection against contamination and chemical attack by imparting a film-forming layer on the surface of the concrete. Consult a Scofield Concrete Cures & Sealers Guide.

Proguard Duracover is a multi-ply, textured floor protection membrane laminated with a non-woven polypropylene geotextile. It is available in 6 ft. x 150 ft. rolls and may be cut to fit using scissors or a utility knife. Proguard Duracover can be easily removed at the completion of the project, requiring minimal clean up.