

# Pebbletex Platinum CI

Adhesively-applied, featuring graphite continues insulated moisture drainage exterior wall cladding with Finestop fluid applied air/water-resistive barrier.

## DESCRIPTION

Pebbletex Platinum CI (Continuous Insulation) is an exterior cladding system featuring Neopor GPS Plus advanced insulation technology. The system uses a Finestop secondary air/water-resistive barrier and channels created by the trowel pattern of the adhesive to provide a cost-effective added level of protection of the sheathing and cavity against moisture and air intrusion. It offers design flexibility, aesthetic appeal and energy savings.

## USES

For exterior walls in new and retrofit commercial, institutional and residential construction when a continuous high effective R-value is needed to meet energy or eco-efficiency standards, and/or when a rainscreen is desired or required to satisfy code issues related to drainage, and where high wind-load requirements dictate the use of adhesive attachment.

## ACCEPTABLE SUBSTRATES

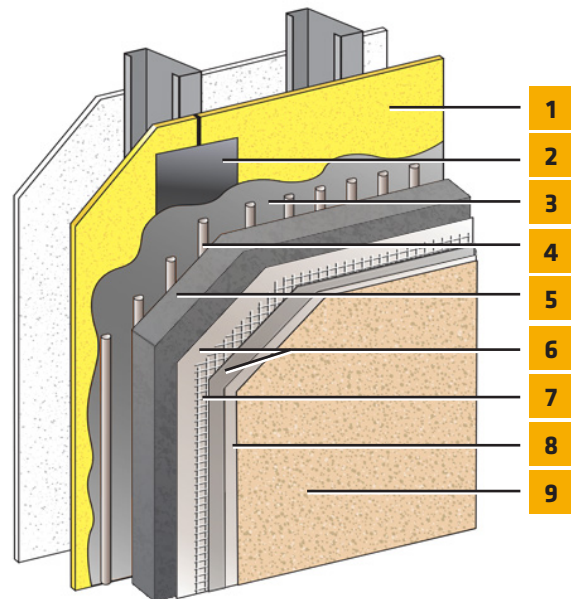
ASTM C1177 type sheathings, including DensGlass™ and DensElement™ (as sheathing only) exterior sheathing, eXP™ sheathing, GlasRoc® sheathing, Securock™ glass-mat sheathing, Weather Defense™ Platinum sheathing, and GreenGlass® sheathing, Huber Zip Sheathing (as sheathing only), PermaBase™ cement-board by National Gypsum and other cement boards (ASTM C1325 Type A Exterior), Untreated Exposure I OSB, Untreated Exposure I or exterior plywood sheathing (grade C-D or better), Gypsum sheathing (ASTM C79/ASTM C1396), Poured concrete/unit masonry.

## ADVANTAGES

Highly energy efficient, easy to specify a design that meets ASHRAE design standards and IGCC/IECC code requirements for the use of continuous insulation.

## MATERIAL SUBSTITUTION

Material substitution will adversely affect system performance and will void all warranty coverage unless approved in writing by Sika Facades.



1. Acceptable Substrate\*
2. SikaWall Joint Treatment: Sheathing Fabric, MaxFlash or Flash Seal NP
3. Finestop RA/RS/VB
4. LaHabra Adhesive/Base Coat
5. Neopor GPS Plus Rigid Insulation Board\*
6. LaHabra Base Coat
7. LaHabra Reinforcing Mesh
8. SikaWall Tinted Primer (optional)
9. LaHabra Finish Coat

\*By Others

## Pebbletex Platinum CI

### Pebbletex Platinum CI Test Results Complies with ASTM E2568 & AC 235

TEST	Results
ASTM G153 Accelerated weathering	No deleterious effects after 2000 hours viewed under 5x magnification.
ASTM E331 Water Penetration	No penetration after 15 minutes at 574 Pa (12psf).
ASTM D2247 Water Resistance	No deleterious effects at 14 day exposure.
ASTM E2486 Impact Resistance with Standard Mesh	Medium - 64 in-lbs
UBC Standard 26-9 / NFPA 285 Intermediate Scale Multi-story Fire Test	Met test criteria with 12" thick insulation.
NFPA 268 Radiant heat exposure	Met test criteria with 12" thick insulation.
ASTM E 84 Surface burning	System Components - Flame spread <25; Smoke developed <450
ASTM E119 Methods for fire tests of building construction and materials	1 hour rating with maximum 4" thick insulation
ASTM E330 Wind-load Assembly description: Steel stud framing (20 gauge) 16"o.c., 1/2" gypsum sheathing, SikaWall Sheathing Fabric over sheathing joints, Finestop RA/RS/VB, LaHabra Adhesive, 1" NEOPOR GPS Plus Rigid Insulation Board, LaHabra Base Coat, Standard Mesh Reinforcing Mesh, LaHabra Finish. Assembly description: Wood assembly (2' x 4') 16"o.c., 7/16" Exposure 1 OSB, SikaWall Sheathing Fabric over sheathing joints, Finestop RA/RS/VB, LaHabra Adhesive, Rigid Insulation Board, LaHabra Base Coat, Standard Reinforcing Mesh, LaHabra Finish.	Average ultimate loads: - 3126 Pa (- 65 psf) + 2633 Pa (+ 55 psf) not taken to failure  Average ultimate loads: - 8379 Pa (- 175 psf) + 3591 Pa (+ 75 psf) not taken to failure
ASTM E2273 Drainage efficiency	98.7% - Exceeds 90% minimum

### Neopor GPS Plus Rigid Insulation Board Test Results (ASTM C578, Type I, nominal 1 pcf)

Physical Property	ASTM Method	Units	R-5	R-7.5	R-10
R-Value, 75F	C518	Btu • in/ft <sup>2</sup> hr • deg F	5	7.5	10
Thickness	-	inches	1 1/16"	1 1/2"	2 1/8"
Compressive Strength	D1621	psi, min		10	
Flexural Strength	C203	psi, min		25	
Water Vapor Permeance	E96	perm, max		5.0	
Water Absorption	C272	% by volume max		4.0	
Water Affinity	BASF	-		Hydrophobic	
Water Capillarity	BASF	-		None	
Dimensional Stability	D2126	% linear change max		2.0	
Flame Spread	E84	-		<25	
Smoke Developed	E84	-		<450	
Oxygen Index min	D2863	min		24	

# Pebbletex Platinum CI

## DESIGN CONSIDERATIONS

- Maximum allowable deflection  $L/240$ , based on structural properties only.
- The design wind load shall not exceed the system's allowable wind load as stated in applicable code reports.
- Details shall conform with Sika Facades recommendations and shall be consistent with the project requirements.
- Consult the framing and sheathing manufacturer for design and application considerations.
- Expansion joints are required in the system where they exist in the substrate, where the system adjoins dissimilar construction, at changes in substrates and at floor lines in multilevel wood frame construction.
- System shall terminate at expansion joints.
- Sealant joints shall be detailed and installed per sealant manufacturer's recommendations.
- Minimum slope: 1:2 with maximum width of 12" (30.5 cm) [e.g. 6-12" (15 cm in 30.5 cm) width].
- Backer rod, sealant & flashing are required at door and window openings.
- Sheathing must be protected with Finestop RA/RS/VB.
- Create drainage channels with vertical adhesive ribbons, installed in accordance with Pebbletex Platinum CI specification.
- Use high impact mesh for ground floor applications in hightraffic areas.

### Neopor GPS Plus R-5, R-7.5 and R-10 rigid insulation boards offer numerous advantages:

- Zero thermal drift that ensures long-term R-value stability.
- Contains no CFC's or HCFC's.
- Vapor permeable and water resistant for optimum drainage wall performance.
- Silver-gray color reduces job site glare and is easier on the eyes of installers.
- Is 100% recyclable and Greenguard Gold Certified.

## WARRANTY

Prior to each use of any product of Sika Corporation, its subsidiaries or affiliates ("SIKA"), the user must always read and follow the warnings and instructions on the product's most current product label, Product Data Sheet and Safety Data Sheet which are available at [usa.sika.com/lahabra](http://usa.sika.com/lahabra) or by calling Sika Facades' Technical Service Department at 1-800-589-1336. Nothing contained in any Sika literature or materials relieves the user of the obligation to read and follow the warnings and instructions for each Sika product as set forth in the current product label, Product Data Sheet and Safety Data Sheet prior to use of the Sika product.

SIKA warrants this product for one year from date of installation to be free from manufacturing defects and to meet the technical properties on the current Product Data Sheet if used as directed within the product's shelf life. User determines suitability of product for intended use and assumes all risks. User's and/or buyer's sole remedy shall be limited to the purchase price or replacement of this product exclusive of any labor costs. NO OTHER WARRANTIES EXPRESS OR IMPLIED SHALL APPLY INCLUDING ANY WARRANTY OF MERCHANTABILITY OR FITNESS FOR A PARTICULAR PURPOSE. SIKA SHALL NOT BE LIABLE UNDER ANY LEGAL THEORY FOR SPECIAL OR CONSEQUENTIAL DAMAGES. SIKA SHALL NOT BE RESPONSIBLE FOR THE USE OF THIS PRODUCT IN A MANNER TO INFRINGE ON ANY PATENT OR ANY OTHER INTELLECTUAL PROPERTY RIGHTS HELD BY OTHERS. Sale of Sika products are subject to the Terms and Conditions of Sale which are available at [usa.sika.com](http://usa.sika.com).