

**LaHabra®**



## **Fastwall CI WaterMaster with Drain Mat**

Continuously Insulated Premium Cement Plaster Stucco Rain  
Screen System with Enhanced Water Management Featuring a Finestop  
Air/Water-Resistive Barrier

Typical Details

**BUILDING TRUST**



# Fastwall CI WaterMaster with Drain Mat

## Typical Details

### Table of Contents

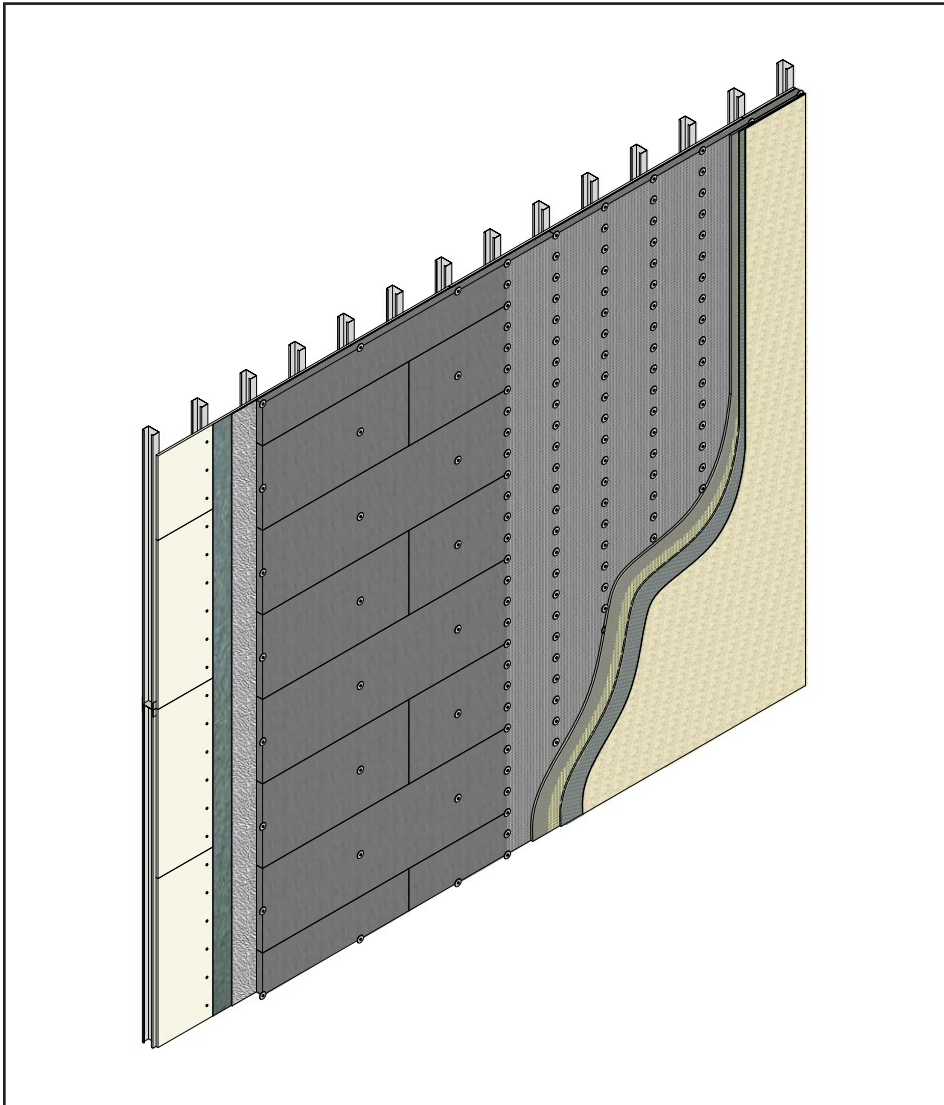
- |  |  |
|--|--|
| 1. Fastening Pattern   | 16. Flanged Window Head  |
| 2. Framed / Sheathed Construction                                | 17. Window Jamb (Flush)  |
| 3. Masonry / Concrete Construction                               | 18. Window Jamb (Recessed)                                       |
| 4. Termination at Foundation – Flush with Casing / Stop Bead     | 19. Flanged Window Jamb  |
| 5. Termination at Foundation with Casing / Stop Bead             | 20. Window Sill (Flush)  |
| 6. Termination at Foundation with CI Weep Track                  | 21. Window Sill (Recessed)                                       |
| 7. Change in Substrate   | 22. Flanged Window Sill  |
| 8. Trim Junction   | 23. Pipe Penetration   |
| 9. Surface Control Joint   | 24. Dryer Vent   |
| 10. Inside Corner Control Joint – Framed / Sheathed Construction | 25. Downspout  |
| 11. EPS Shape Application  | 26. Light Fixture  |
| 12. Corner Bead  | 27. Termination at Metal Coping / Roof Edge Flashing – Option 01 |
| 13. Decorative Shape   | 28. Termination at Metal Coping / Roof Edge Flashing – Option 02 |
| 14. Window Head (Flush)  | 29. Flashing / Termination at Roof                               |
| 15. Window Head (Recessed)                                       | 30. Kick-Out Flashing  |

### Notes:

- **The details within are the latest recommendations and are represent in good faith by Sika Corporation US (hereinafter Sika). The details are subject to change without notice. Sika accepts no liability for the end use of the details. For conditions not shown, consult Sika for review of specific details.**
- **Install Sika materials in accordance with current product & safety data sheets, system specification & details installation instructions.**
- **Unsatisfactory conditions shall be reported to the General Contractor and corrected before the application of Sika products.**

# Fastwall CI WaterMaster with Drain Mat

## TYPICAL FASTENING PATTERN



PCISU-01 2404

(\*NOTE: BY OTHERS)

- Sheathing:  
Fasten per sheathing manufacturer's recommendations or project design requirements.
- SikaWall Drainage Mat:  
Use sufficient fasteners to hold in place until application of Rigid Insulation Board.
- Rigid Insulation Board:  
Secure with 2 to 3 fasteners per board to hold in place until lath is installed.
- Lath – SikaWall PermaLath 1000:  
Use appropriate fasteners spaced not more than 6" (152 mm) o.c. vertically, 16" (406 mm) o.c. horizontally; metal or wire lath: use appropriate fasteners spaced not more than 7" (178 mm) o.c. vertically, 16" (406 mm) or 24" (610 mm) o.c. horizontally, per requirements of ASTM C1063. Refer to LaHabra Fastwall CI WaterMaster with Drain Mat specifications.

The details within are latest recommendations and are represent in good faith by Sika Corporation US (hereinafter Sika). The details are subject to change without notice. Sika accepts no liability for the end use of the details. For conditions not shown, consult Sika for review of specific details.

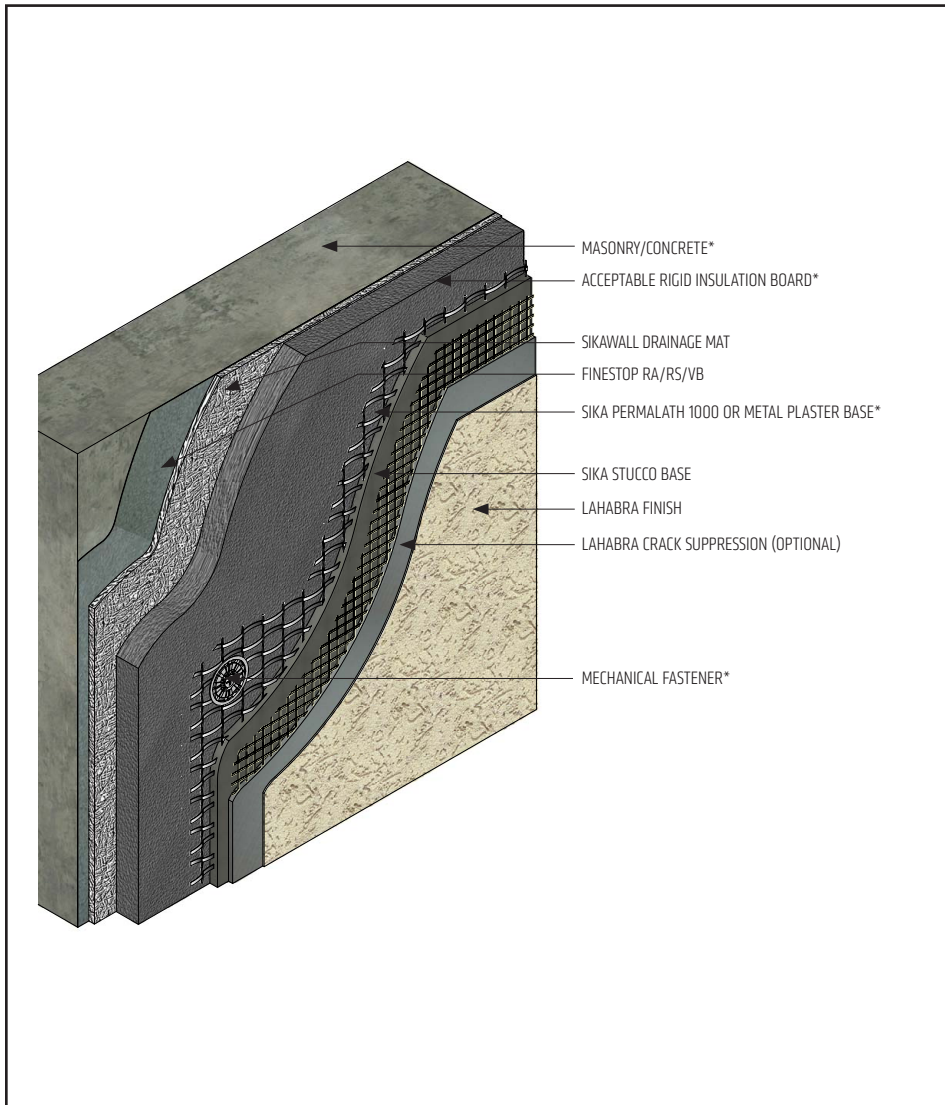
- Install Sika materials in accordance with current product & safety data sheets, system specification & details installation instructions.
- Unsatisfactory conditions shall be reported to the General Contractor and corrected before the application of Sika products.





# Fastwall CI WaterMaster with Drain Mat

## TYPICAL MASONRY/CONCRETE CONSTRUCTION



PCISU-03 2404

(\*NOTE: BY OTHERS)

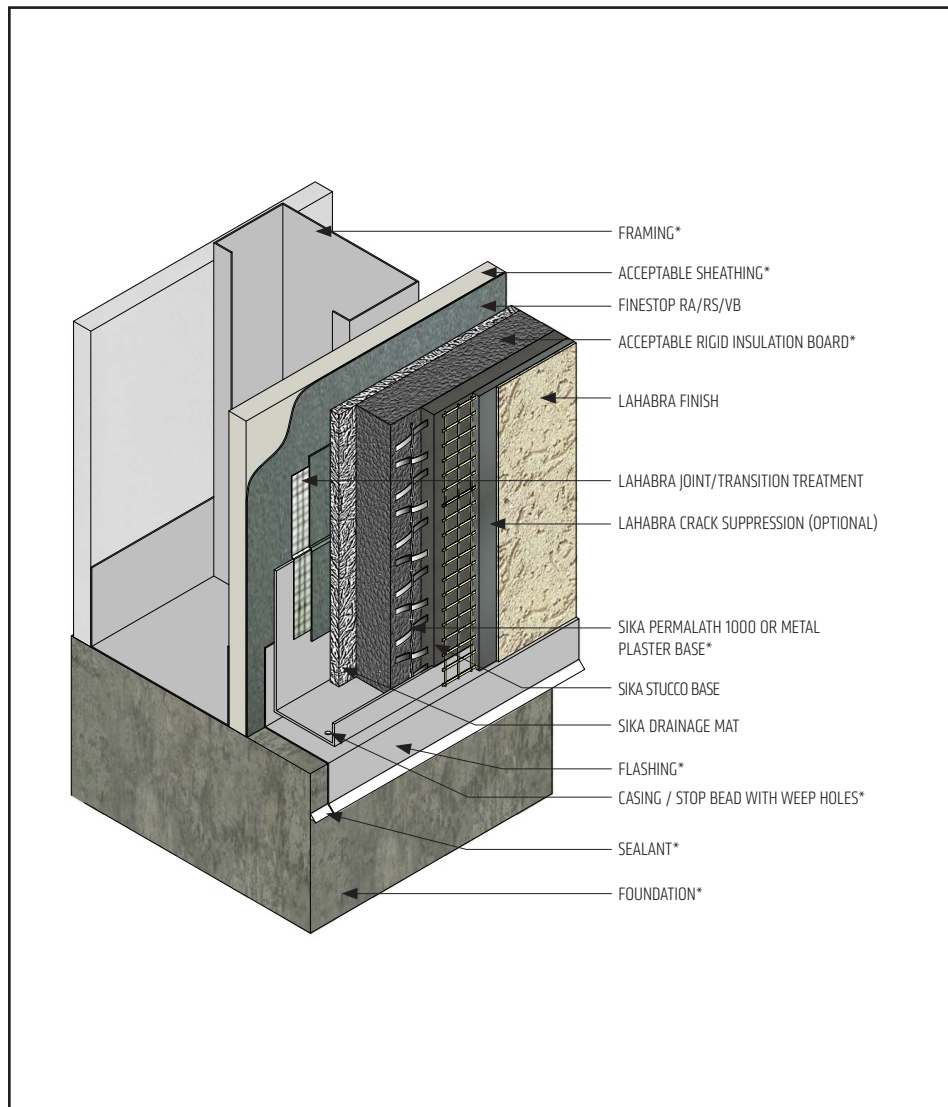
- Multiple coats of Finestop may be required to achieve a pin-hole free application.
- Ensure Finestop is dry prior to SikaWall Drainage Mat installation.
- Basic requirements for Plaster Base:
  - Sika Stucco Base 3/8" to 1/2" thickness: Min. 1" 20 ga. wire, min. 2.5 lb/sq.yd. metal lath or acceptable alternative.
  - Sika Stucco Base equal to or greater than 1/2" thickness: SikaWall PermaLath 1000 or min. 1-1/2" 17 ga. wire, min. 2.5 lb/sq.yd. metal lath or acceptable alternative.
- LaHabra Crack Suppression: LaHabra Standard Mesh 4 or SikaWall SRT Mesh embedded in LaHabra Base Coat or SikaWall Stucco Surface Leveler.

The details within are latest recommendations and are represent in good faith by Sika Corporation US (hereinafter Sika). The details are subject to change without notice. Sika accepts no liability for the end use of the details. For conditions not shown, consult Sika for review of specific details.

- Install Sika materials in accordance with current product & safety data sheets, system specification & details installation instructions.
- Unsatisfactory conditions shall be reported to the General Contractor and corrected before the application of Sika products.

# Fastwall CI WaterMaster with Drain Mat

## TYPICAL TERMINATION AT FOUNDATION – FLUSH WITH CASING / STOP BEAD



PCISU-04 2404

(\*NOTE: BY OTHERS)

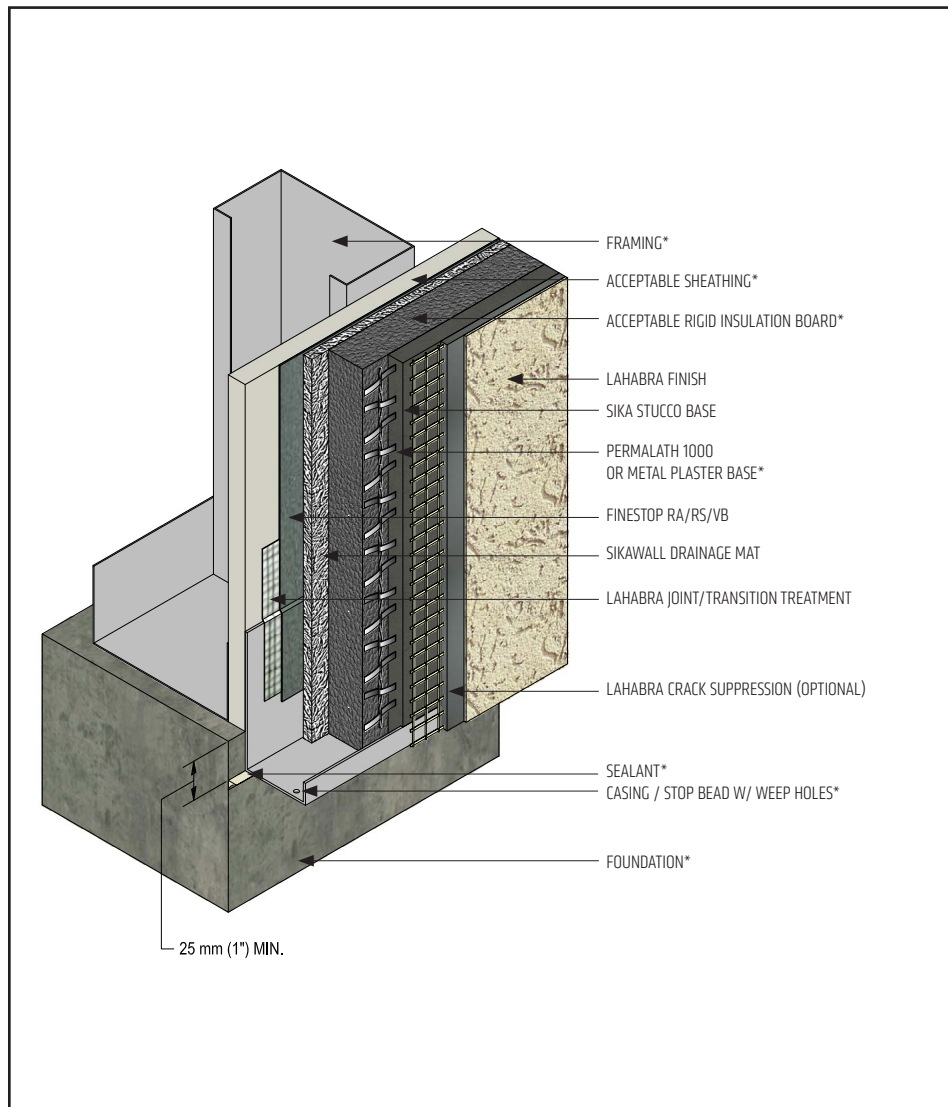
- Terminate the Fastwall CI WaterMaster with Drain Mat system a minimum of 6" (152 mm) above raw earth and 2" (50 mm) above paved surface.
- Use LaHabra Transition Treatment in Finestop where it laps over the casing/stop bead flange.
- Ensure casing/stop bead includes weep holes to facilitate drainage.
- LaHabra Joint/Transition Treatment Options: SikaWall MaxFlash, SikaWall Sheathing Fabric embedded in Finestop RA/RS/VB or SikaWall Flash Seal NP.
- LaHabra Crack Suppression: LaHabra Standard Mesh 4 or SikaWall SRT Mesh embedded in LaHabra Base Coat or SikaWall Stucco Surface Leveler.

The details within are latest recommendations and are represent in good faith by Sika Corporation US (hereinafter Sika). The details are subject to change without notice. Sika accepts no liability for the end use of the details. For conditions not shown, consult Sika for review of specific details.

- Install Sika materials in accordance with current product & safety data sheets, system specification & details installation instructions.
- Unsatisfactory conditions shall be reported to the General Contractor and corrected before the application of Sika products.

# Fastwall CI WaterMaster with Drain Mat

## TYPICAL TERMINATION AT FOUNDATION WITH CASING / STOP BEAD



- Terminate the Fastwall CI WaterMaster with Drain Mat system a minimum of 6" (152 mm) above raw earth and 2" (50 mm) above paved surface.
- Provide minimum 1" (25 mm) overlap at framing/foundation transition.
- Use LaHabra Transition Treatment where it laps over the casing/stop bead flange.
- Ensure casing/stop bead includes weep holes to facilitate drainage.
- LaHabra Joint/Transition Treatment Options: SikaWall MaxFlash, SikaWall Sheathing Fabric embedded in Finestop RA/RS/VB or SikaWall Flash Seal NP.
- LaHabra Crack Suppression: LaHabra Standard Mesh 4 or SikaWall SRT Mesh embedded in LaHabra Base Coat or SikaWall Stucco Surface Leveler.

PCISU-05 2404

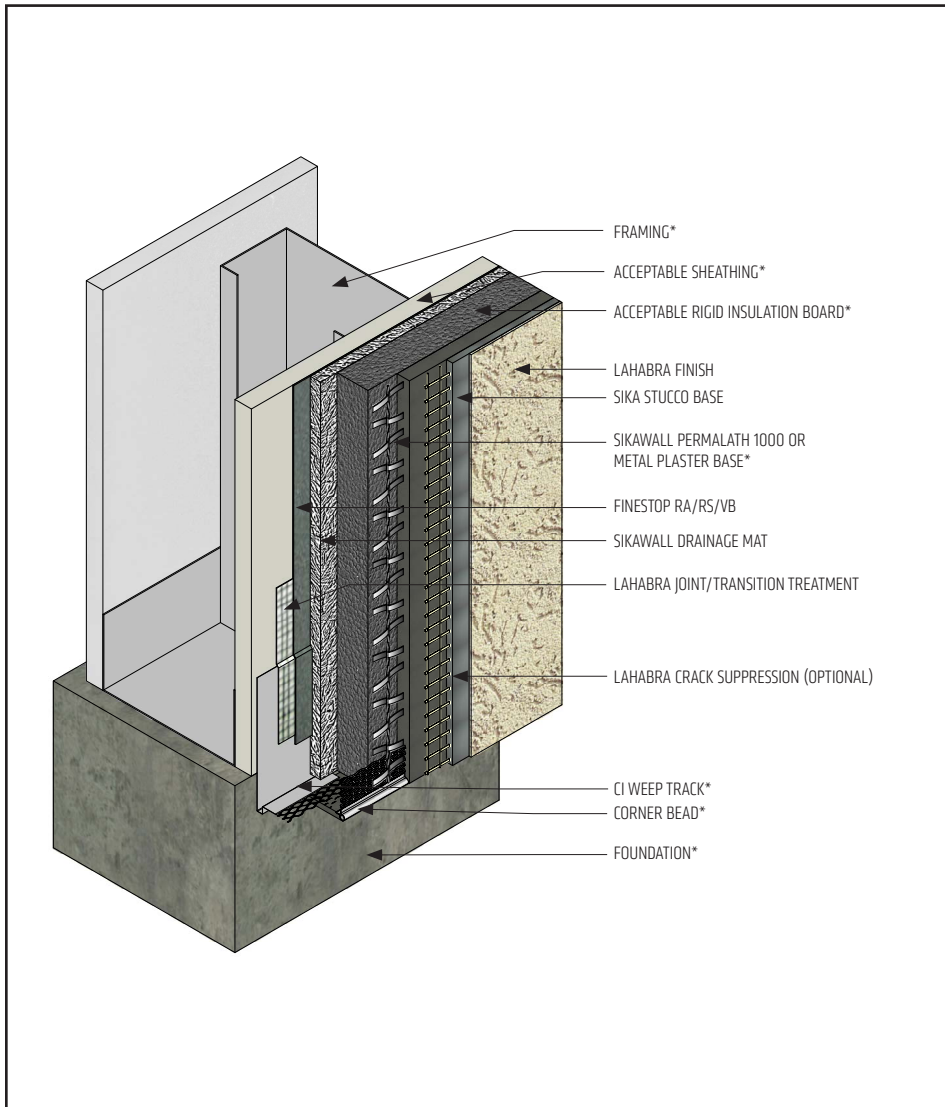
(\*NOTE: BY OTHERS)

The details within are latest recommendations and are represent in good faith by Sika Corporation US (hereinafter Sika). The details are subject to change without notice. Sika accepts no liability for the end use of the details. For conditions not shown, consult Sika for review of specific details.

- Install Sika materials in accordance with current product & safety data sheets, system specification & details installation instructions.
- Unsatisfactory conditions shall be reported to the General Contractor and corrected before the application of Sika products.

# Fastwall CI WaterMaster with Drain Mat

## TYPICAL TERMINATION AT FOUNDATION WITH CI WEEP TRACK



PCISU-06 2404

(\*NOTE: BY OTHERS)

- Terminate the Fastwall CI WaterMaster with Drain Mat system a minimum of 6" (152 mm) above raw earth and 2" (50 mm) above paved surface.
- Provide minimum 1" (25 mm) overlap at framing/foundation transition.
- Use LaHabra Transition Treatment to lap over the CI Weep Track flange.
- LaHabra Joint/Transition Treatment Options: SikaWall MaxFlash, SikaWall Sheathing Fabric embedded in Finestop RA/RS/VB or SikaWall Flash Seal NP.
- LaHabra Crack Suppression: LaHabra Standard Mesh 4 or SikaWall SRT Mesh embedded in LaHabra Base Coat or SikaWall Stucco Surface Leveler.

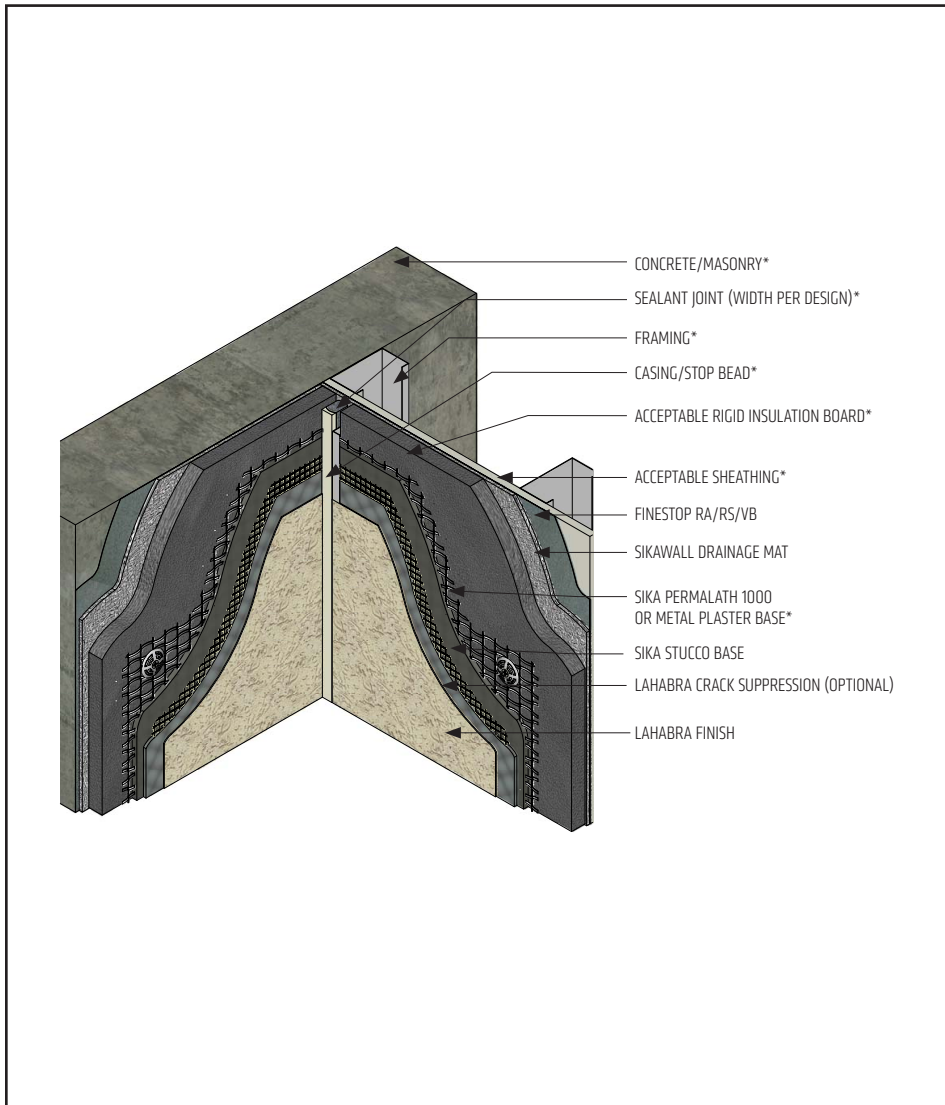
The details within are latest recommendations and are represent in good faith by Sika Corporation US (hereinafter Sika). The details are subject to change without notice. Sika accepts no liability for the end use of the details. For conditions not shown, consult Sika for review of specific details.

- Install Sika materials in accordance with current product & safety data sheets, system specification & details installation instructions.
- Unsatisfactory conditions shall be reported to the General Contractor and corrected before the application of Sika products.



# Fastwall CI WaterMaster with Drain Mat

## TYPICAL CHANGE IN SUBSTRATE



- Ensure Finestop application is continuous behind the stucco system at change in substrate – apply SikaWall Flash Seal NP at change in substrate followed by fully coating SikaWall Flash Seal NP with Finestop.
- Do not apply finish into joint to receive sealant.
- LaHabra Crack Suppression: LaHabra Standard Mesh 4 or SikaWall SRT Mesh embedded in LaHabra Base Coat or SikaWall Stucco Surface Leveler.

PCISU-07 2404

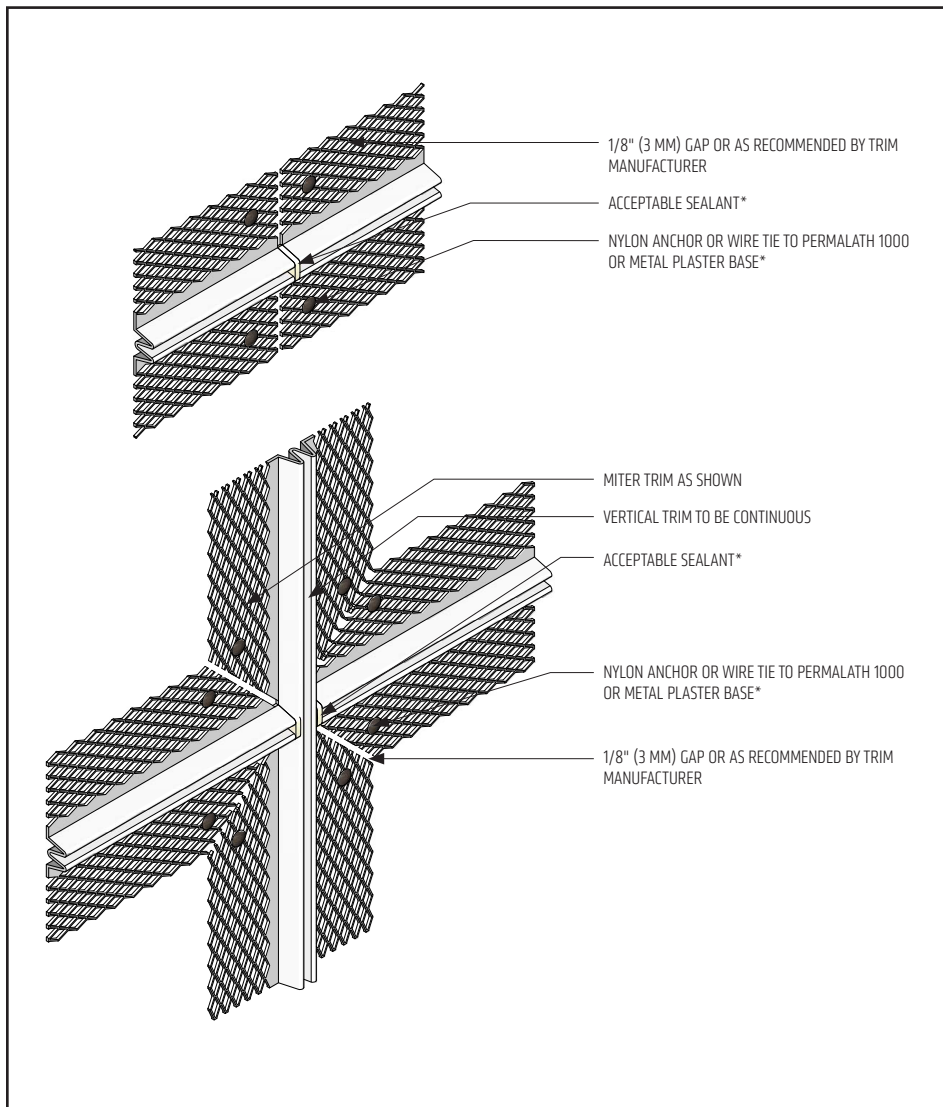
(\*NOTE: BY OTHERS)

The details within are latest recommendations and are represent in good faith by Sika Corporation US (hereinafter Sika). The details are subject to change without notice. Sika accepts no liability for the end use of the details. For conditions not shown, consult Sika for review of specific details.

- Install Sika materials in accordance with current product & safety data sheets, system specification & details installation instructions.
- Unsatisfactory conditions shall be reported to the General Contractor and corrected before the application of Sika products.

# Fastwall CI WaterMaster with Drain Mat

## TYPICAL TRIM JUNCTION



- At trim intersection, it is recommended that the vertical trim be continuous.

PCISU-08 2404

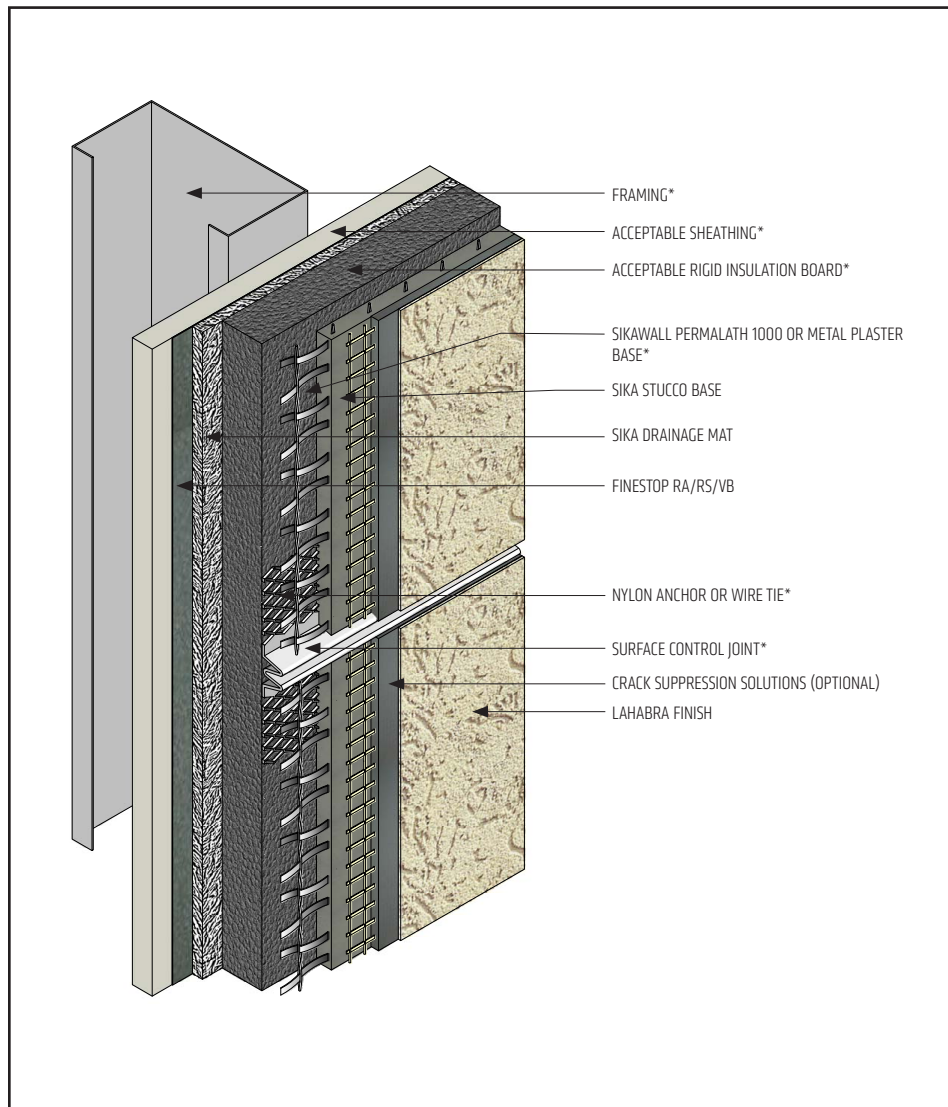
(\*NOTE: BY OTHERS)

The details within are latest recommendations and are represent in good faith by Sika Corporation US (hereinafter Sika). The details are subject to change without notice. Sika accepts no liability for the end use of the details. For conditions not shown, consult Sika for review of specific details.

- Install Sika materials in accordance with current product & safety data sheets, system specification & details installation instructions.
- Unsatisfactory conditions shall be reported to the General Contractor and corrected before the application of Sika products.

# Fastwall CI WaterMaster with Drain Mat

## TYPICAL SURFACE CONTROL JOINT



PCISU-09 2404

(\*NOTE: BY OTHERS)

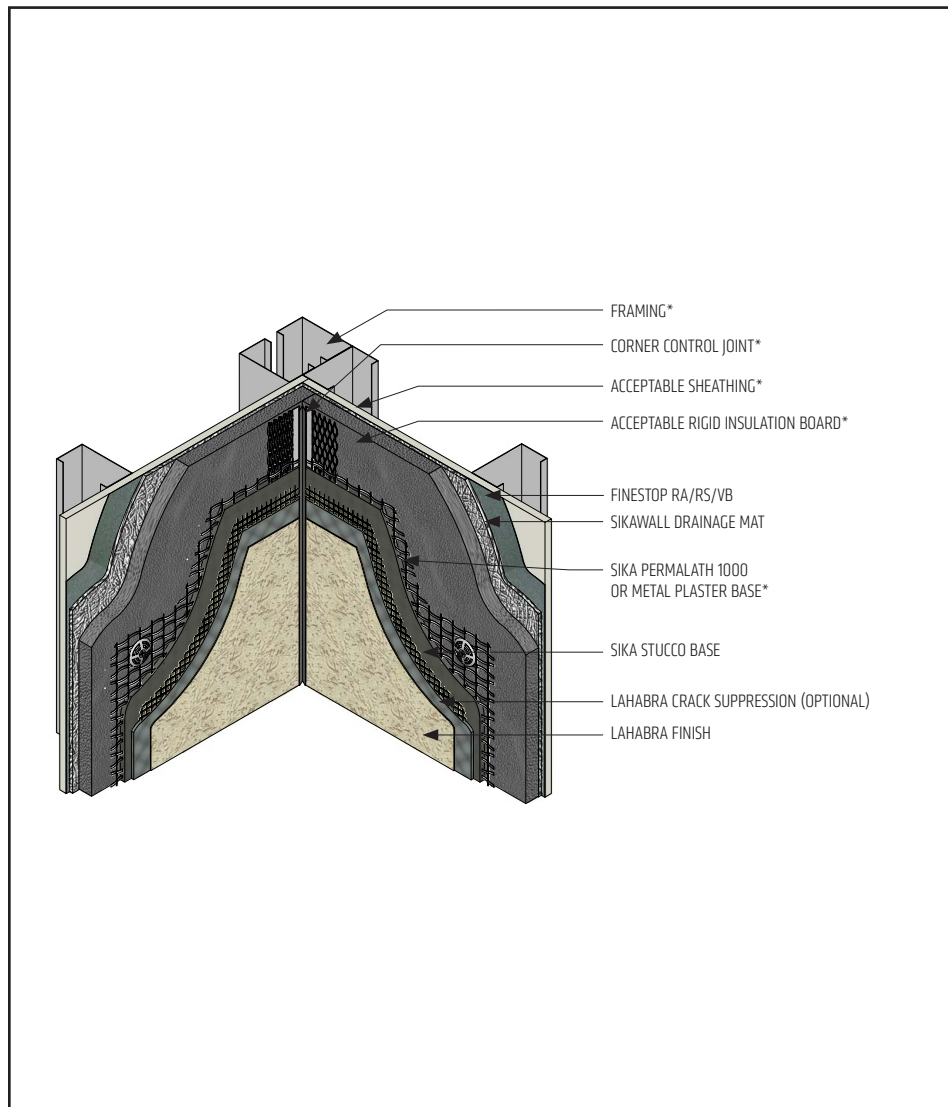
- Provide control joints every 144 ft<sup>2</sup> (13 m<sup>2</sup>) and placement as determined by the design professional. Maximum recommended uncontrolled length or width is 18 ft (5.5 m) and a maximum uncontrolled length to width ratio of 2-1/2 to 1.
- Lath must be broken at the control joint accessory.
- LaHabra Crack Suppression: LaHabra Standard Mesh 4 or SikaWall SRT Mesh embedded in LaHabra Base Coat or SikaWall Stucco Surface Leveler.
- LaHabra Joint/Transition Treatment Options: SikaWall MaxFlash, SikaWall Sheathing Fabric embedded in Finestop RA/RS/VB or SikaWall Flash Seal NP.

The details within are latest recommendations and are represent in good faith by Sika Corporation US (hereinafter Sika). The details are subject to change without notice. Sika accepts no liability for the end use of the details. For conditions not shown, consult Sika for review of specific details.

- Install Sika materials in accordance with current product & safety data sheets, system specification & details installation instructions.
- Unsatisfactory conditions shall be reported to the General Contractor and corrected before the application of Sika products.

# Fastwall CI WaterMaster with Drain Mat

## TYPICAL INSIDE CORNER CONTROL JOINT-FRAMED / SHEATHED CONSTRUCTION



- Ensure Finestop application is continuous behind the stucco system – apply LaHabra Transition Treatment at inside corner.
- LaHabra Crack Suppression: LaHabra Standard Mesh 4 or SikaWall SRT Mesh embedded in LaHabra Base Coat or SikaWall Stucco Surface Leveler.
- LaHabra Joint/Transition Treatment Options: SikaWall MaxFlash, SikaWall Sheathing Fabric embedded in Finestop or SikaWall Flash Seal NP.

PCISU-10

2404

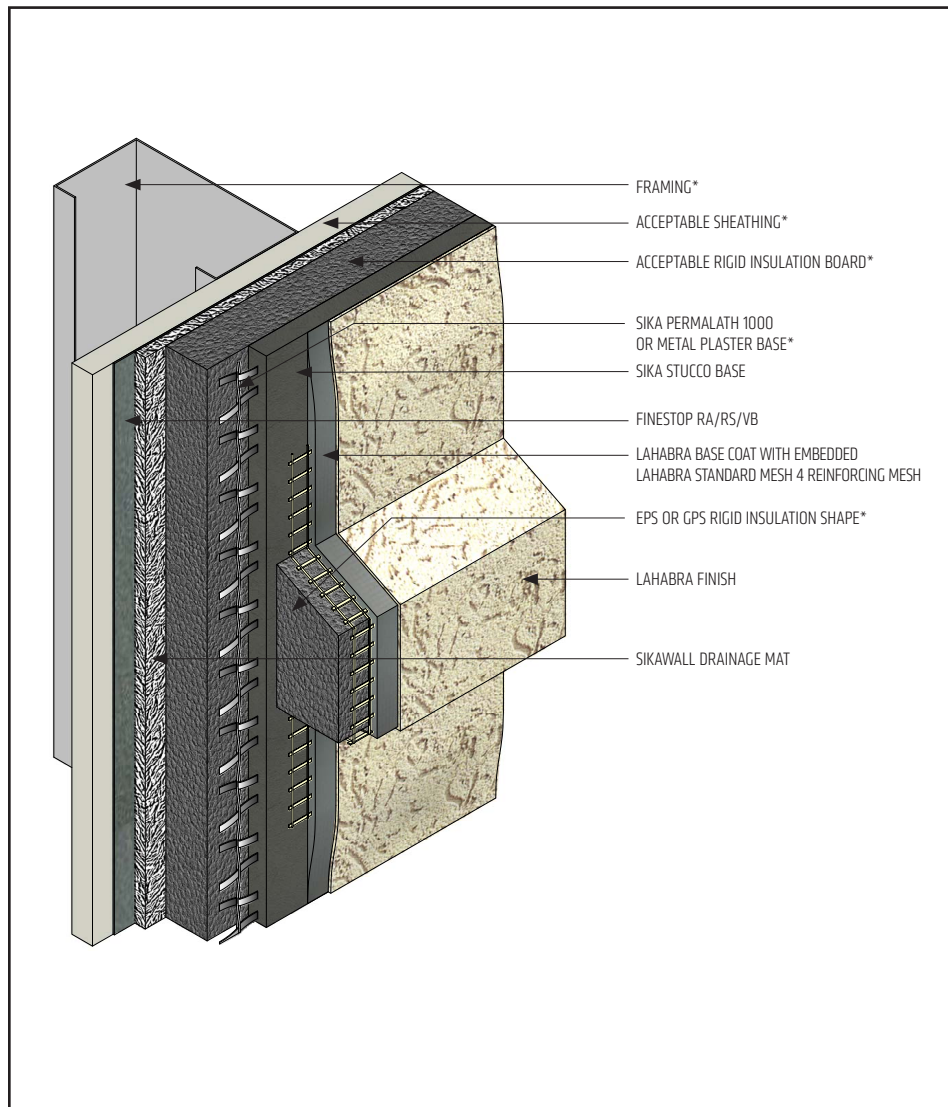
(\*NOTE: BY OTHERS)

The details within are latest recommendations and are represent in good faith by Sika Corporation US (hereinafter Sika). The details are subject to change without notice. Sika accepts no liability for the end use of the details. For conditions not shown, consult Sika for review of specific details.

- Install Sika materials in accordance with current product & safety data sheets, system specification & details installation instructions.
- Unsatisfactory conditions shall be reported to the General Contractor and corrected before the application of Sika products.

# Fastwall CI WaterMaster with Drain Mat

## TYPICAL EPS SHAPE APPLICATION



- Extend LaHabra Standard Mesh 4 Reinforcing Mesh and Base Coat from band or shape onto Sika Stucco Base a minimum of 3" (76 mm).
- Provide a 6:12 slope on horizontal applications greater than 1".
- Adhere EPS or GPS Rigid Insulation band/ shape with LaHabra Base Coat to SikaWall Stucco Base surface.

PCISU-11

2404

(\*NOTE: BY OTHERS)

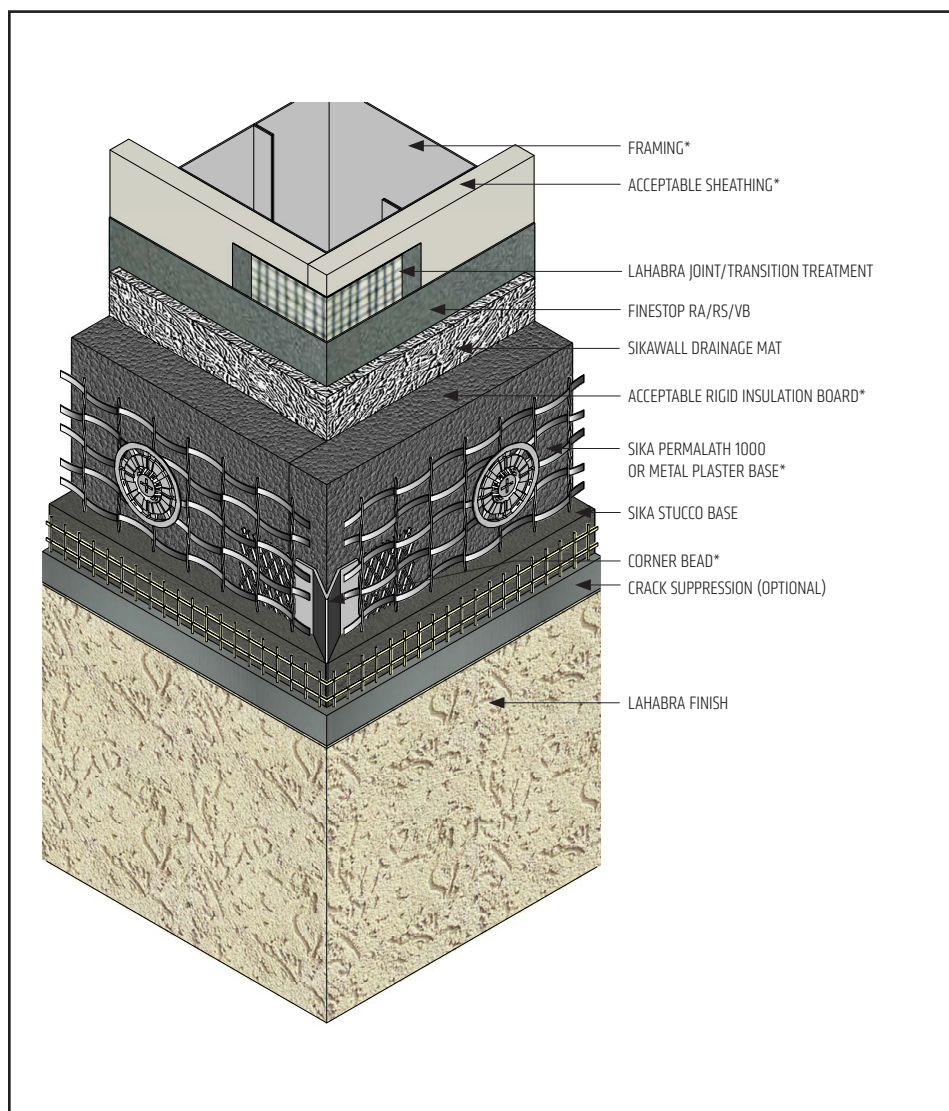
The details within are latest recommendations and are represent in good faith by Sika Corporation US (hereinafter Sika). The details are subject to change without notice. Sika accepts no liability for the end use of the details. For conditions not shown, consult Sika for review of specific details.

- Install Sika materials in accordance with current product & safety data sheets, system specification & details installation instructions.
- Unsatisfactory conditions shall be reported to the General Contractor and corrected before the application of Sika products.



# Fastwall CI WaterMaster with Drain Mat

## TYPICAL CORNER BEAD



- Attach corner bead with wire ties, anchors or fasteners to resist movement during application of Sika Stucco Base.
- Fill corner bead solid with Sika Stucco Base.
- LaHabra Joint/Transition Treatment Options: SikaWall MaxFlash, SikaWall Sheathing Fabric embedded in Finestop or SikaWall Flash Seal NP.
- LaHabra Crack Suppression: Standard Mesh 4 or SikaWall SRT Mesh embedded in LaHabra Base Coat or SikaWall Stucco Surface Leveler.

PCISU-12 2404

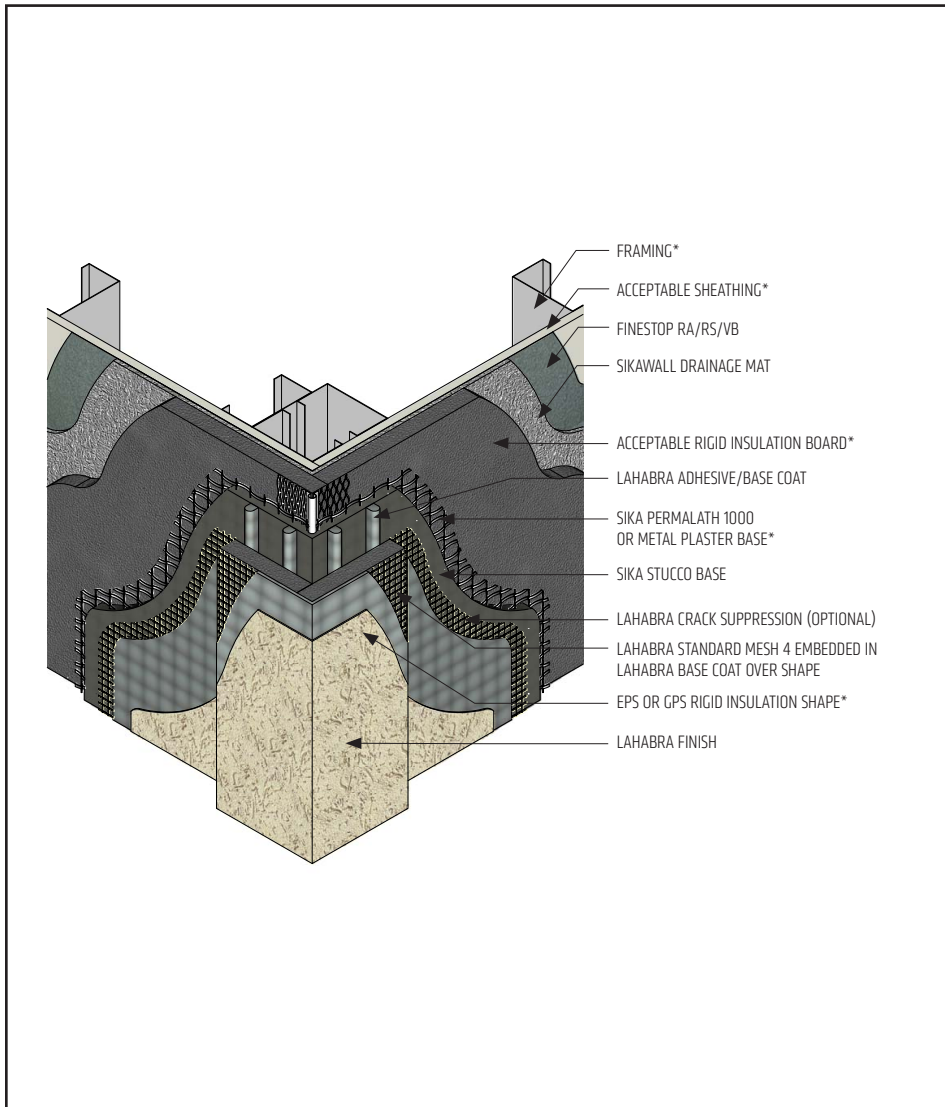
(\*NOTE: BY OTHERS)

The details within are latest recommendations and are represent in good faith by Sika Corporation US (hereinafter Sika). The details are subject to change without notice. Sika accepts no liability for the end use of the details. For conditions not shown, consult Sika for review of specific details.

- Install Sika materials in accordance with current product & safety data sheets, system specification & details installation instructions.
- Unsatisfactory conditions shall be reported to the General Contractor and corrected before the application of Sika products.

# Fastwall CI WaterMaster with Drain Mat

## TYPICAL DECORATIVE SHAPE



- Extend LaHabra Reinforcing Mesh and Base Coat from band or shape onto Sika Stucco Base a minimum of 3" (76 mm).
- Adhere EPS or GPS Rigid Insulation band/ shape with LaHabra Base Coat to Sika Stucco Base surface.
- LaHabra Crack Suppression: Standard Mesh 4 or SikaWall SRT Mesh embedded in LaHabra Base Coat or SikaWall Stucco Surface Leveler.

PCISU-13

2404

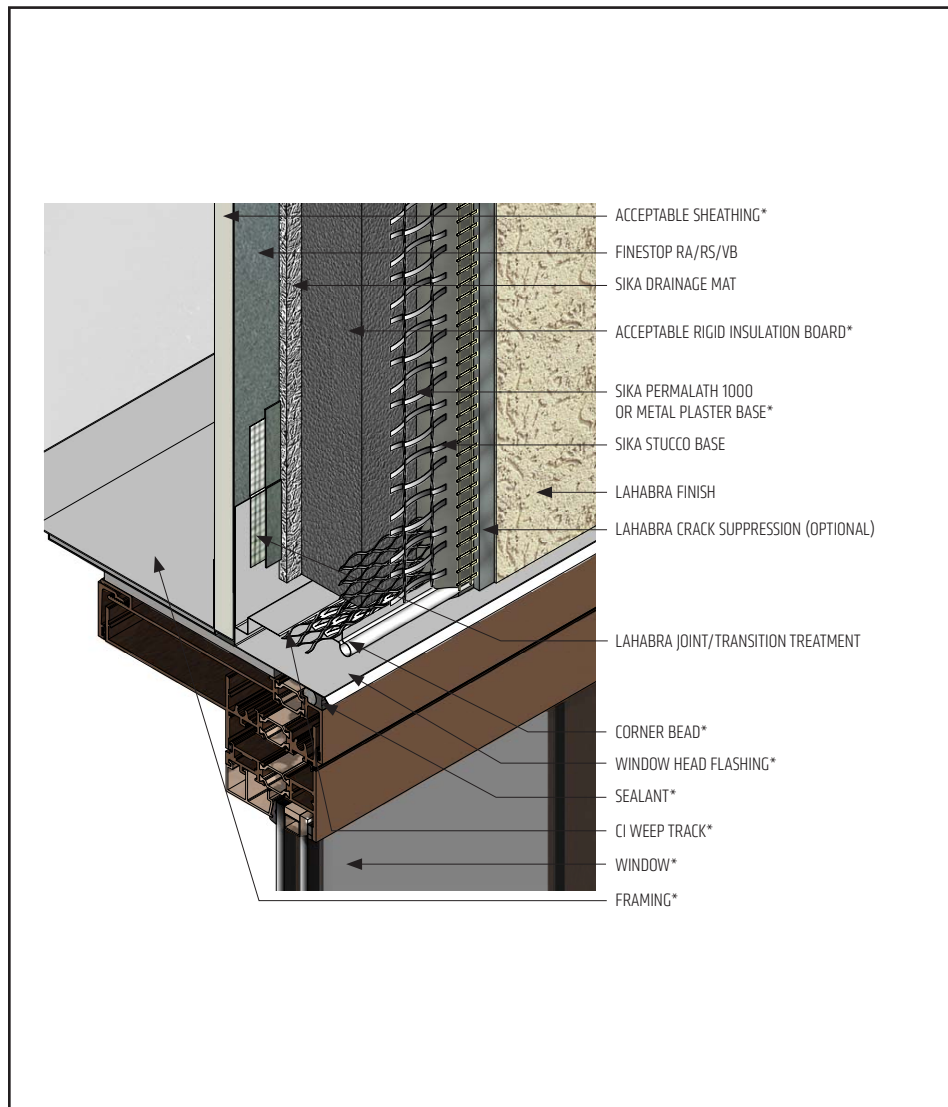
(\*NOTE: BY OTHERS)

The details within are latest recommendations and are represent in good faith by Sika Corporation US (hereinafter Sika). The details are subject to change without notice. Sika accepts no liability for the end use of the details. For conditions not shown, consult Sika for review of specific details.

- Install Sika materials in accordance with current product & safety data sheets, system specification & details installation instructions.
- Unsatisfactory conditions shall be reported to the General Contractor and corrected before the application of Sika products.

## Fastwall CI WaterMaster with Drain Mat

### TYPICAL WINDOW HEAD (FLUSH)



- Use LaHabra Transition Treatment to lap over the CI Weep Track flange.
- Provide end-dams at flashing terminations.
- Seal flashing drip edge to window frame.
- If Finestop is also functioning as an air barrier, ensure head of rough opening is wrapped using LaHabra Joint/Transition Treatment and Finestop.
- LaHabra Joint/Transition Treatment Options: SikaWall MaxFlash, SikaWall Sheathing Fabric embedded in Finestop RA/RS/VB or SikaWall Flash Seal NP.
- LaHabra Crack Suppression: Standard Mesh 4 or SikaWall SRT Mesh embedded in LaHabra Base Coat or SikaWall Stucco Surface Leveler.

PCISU-14 2404

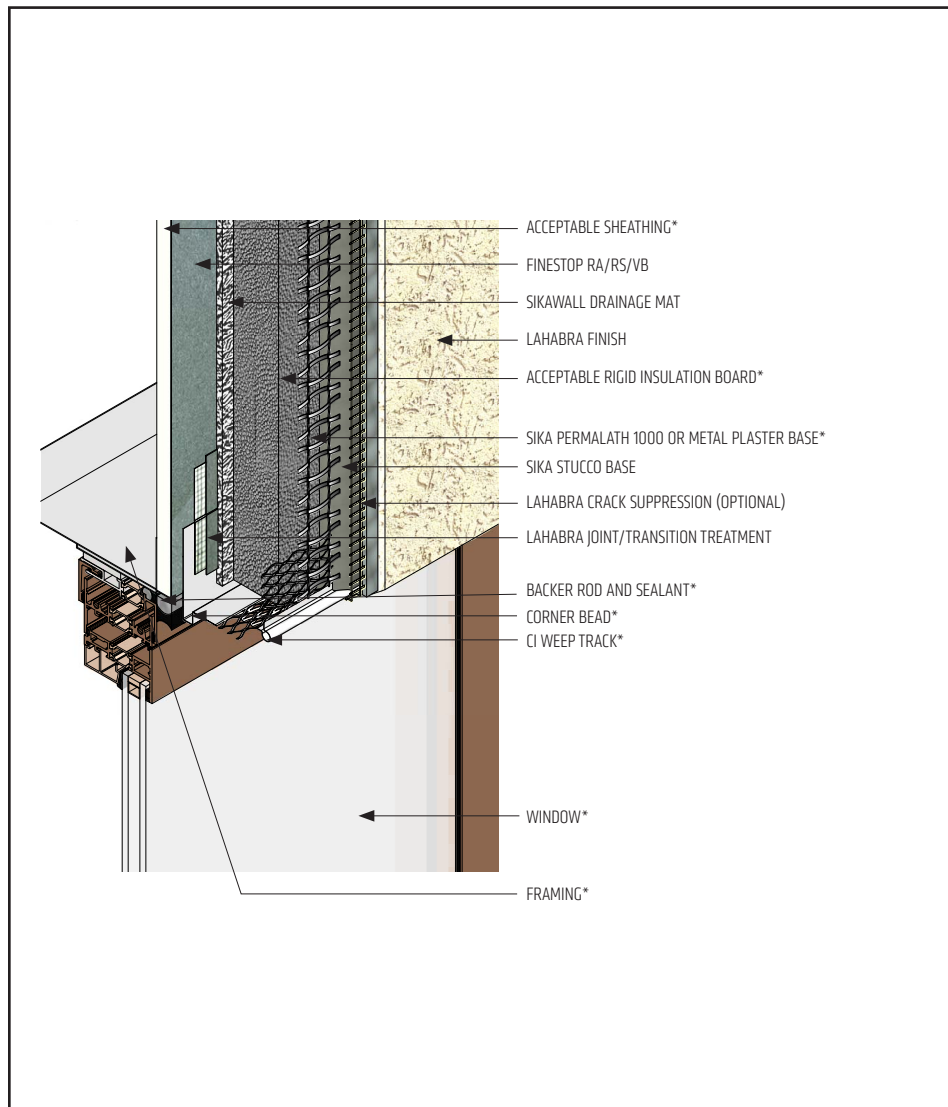
(\*NOTE: BY OTHERS)

The details within are latest recommendations and are represent in good faith by Sika Corporation US (hereinafter Sika). The details are subject to change without notice. Sika accepts no liability for the end use of the details. For conditions not shown, consult Sika for review of specific details.

- Install Sika materials in accordance with current product & safety data sheets, system specification & details installation instructions.
- Unsatisfactory conditions shall be reported to the General Contractor and corrected before the application of Sika products.

## Fastwall CI WaterMaster with Drain Mat

### TYPICAL WINDOW HEAD (RECESSED)



- Use LaHabra Transition Treatment to lap over the CI Weep Track flange.
- If Finestop is also functioning as an air barrier, ensure head of rough opening is wrapped with LaHabra Transition Treatment.
- LaHabra Joint/Transition Treatment Options: SikaWall MaxFlash, SikaWall Sheathing Fabric embedded in Finestop RA/RS/VB or SikaWall Flash Seal NP.
- LaHabra Crack Suppression: Standard Mesh 4 or SikaWall SRT Mesh embedded in LaHabra Base Coat or SikaWall Stucco Surface Leveler.

PCISU-15 2404

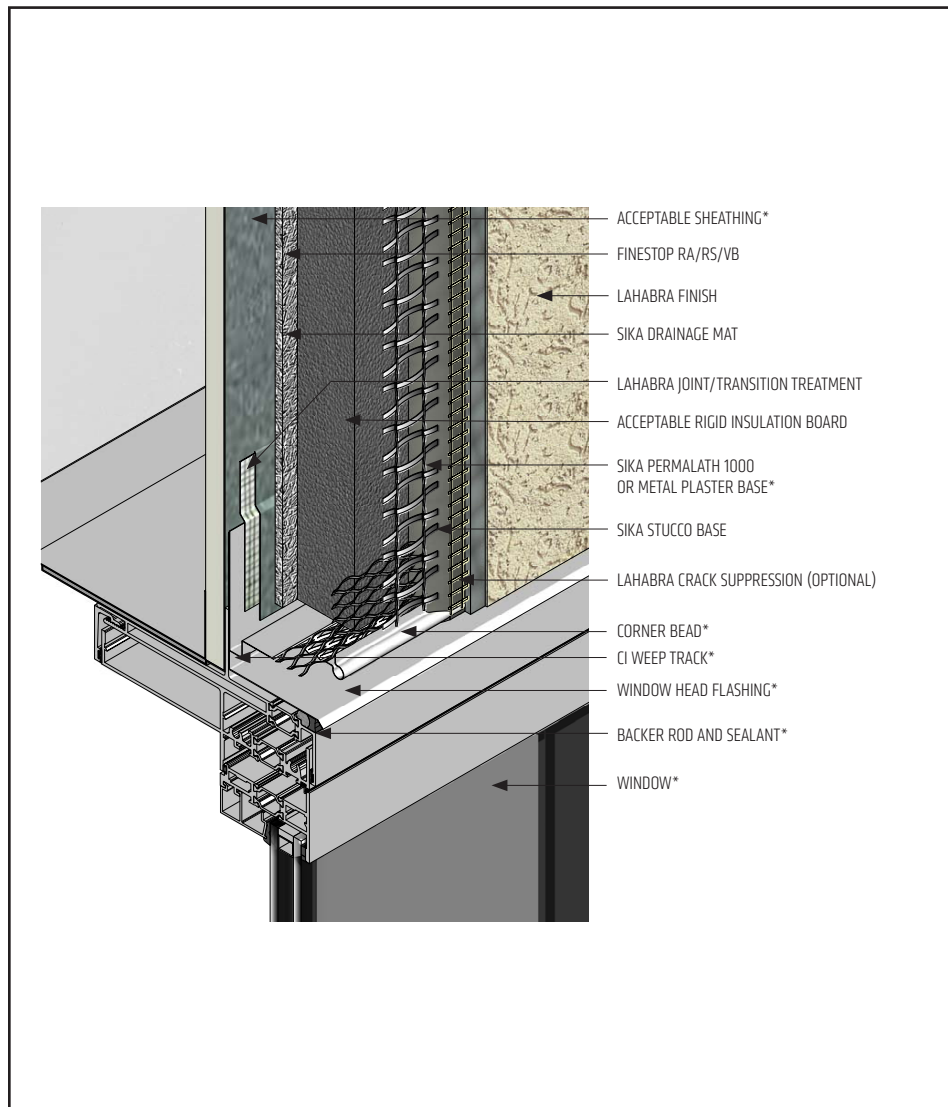
(\*NOTE: BY OTHERS)

The details within are latest recommendations and are represent in good faith by Sika Corporation US (hereinafter Sika). The details are subject to change without notice. Sika accepts no liability for the end use of the details. For conditions not shown, consult Sika for review of specific details.

- Install Sika materials in accordance with current product & safety data sheets, system specification & details installation instructions.
- Unsatisfactory conditions shall be reported to the General Contractor and corrected before the application of Sika products.

## Fastwall CI WaterMaster with Drain Mat

### TYPICAL FLANGED WINDOW HEAD



- As recommended by window manufacturer, apply sealant to back of window flange at head prior to installation of window.
- Use LaHabra Transition Treatment to lap on to the CI Weep Track flange.
- Provide end-dams at flashing terminations.
- Seal flashing drip edge to window frame.
- If Finestop is also functioning as an air barrier, ensure head of rough opening is wrapped with LaHabra Transition Treatment.
- LaHabra Joint/Transition Treatment Options: SikaWall MaxFlash, SikaWall Sheathing Fabric embedded in Finestop RS/RS/VB or SikaWall Flash Seal NP.
- LaHabra Crack Suppression: Standard Mesh 4 or SikaWall SRT Mesh embedded in LaHabra Base Coat or SikaWall Stucco Surface Leveler.

PCISU-16 2404

(\*NOTE: BY OTHERS)

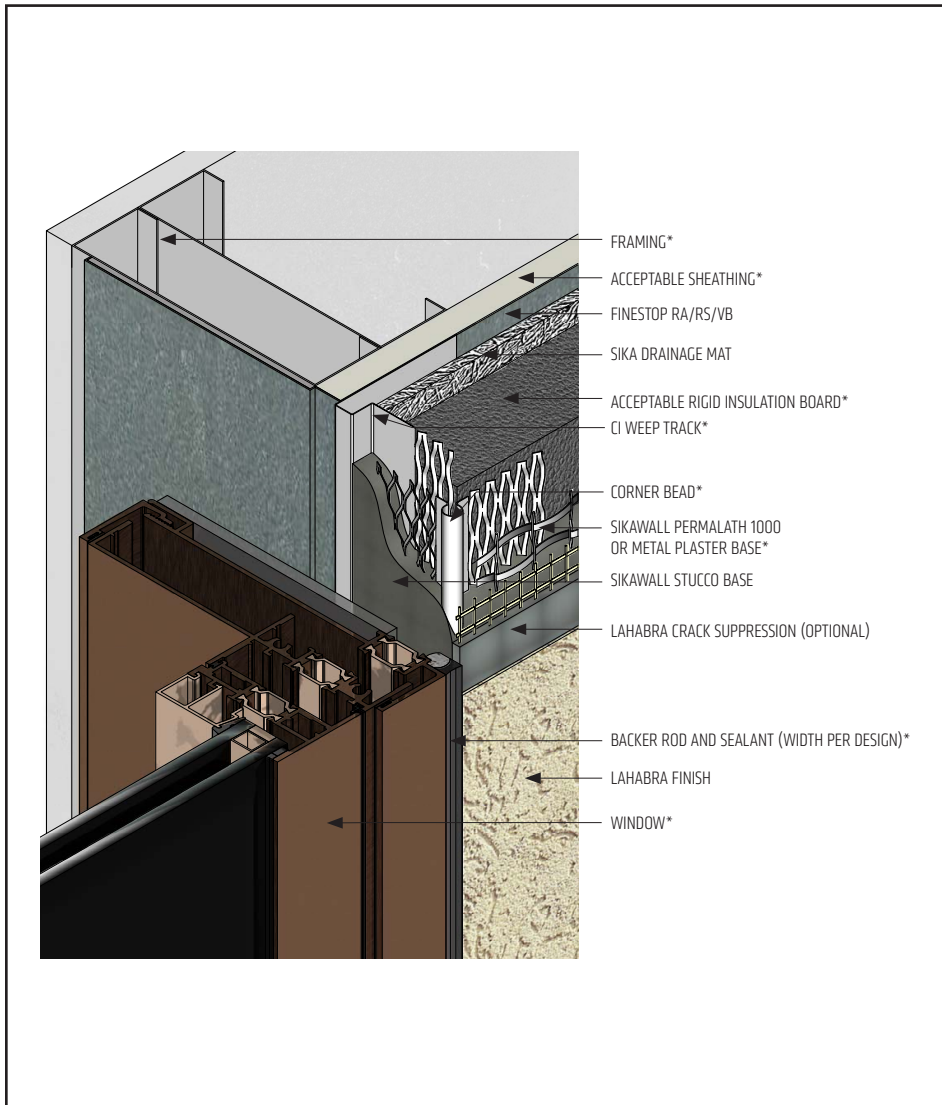
The details within are latest recommendations and are represent in good faith by Sika Corporation US (hereinafter Sika). The details are subject to change without notice. Sika accepts no liability for the end use of the details. For conditions not shown, consult Sika for review of specific details.

- Install Sika materials in accordance with current product & safety data sheets, system specification & details installation instructions.
- Unsatisfactory conditions shall be reported to the General Contractor and corrected before the application of Sika products.



# Fastwall CI WaterMaster with Drain Mat

## TYPICAL WINDOW JAMB (FLUSH)



- Ensure Finestop air/water-resistive barrier is properly applied into rough opening in accordance with application guidelines. Reference Finestop air/water-resistive barrier details.
- Do not apply finish into joint to receive sealant.
- Use non-hole punched version of CI Weep Track on jambs.
- LaHabra Joint/Transition Treatment Options: SikaWall MaxFlash, SikaWall Sheathing Fabric embedded in Finestop RS/RS/VB or SikaWall Flash Seal NP.
- LaHabra Crack Suppression: Standard Mesh 4 or SikaWall SRT Mesh embedded in LaHabra Base Coat or SikaWall Stucco Surface Leveler.

PCISU-17

2404

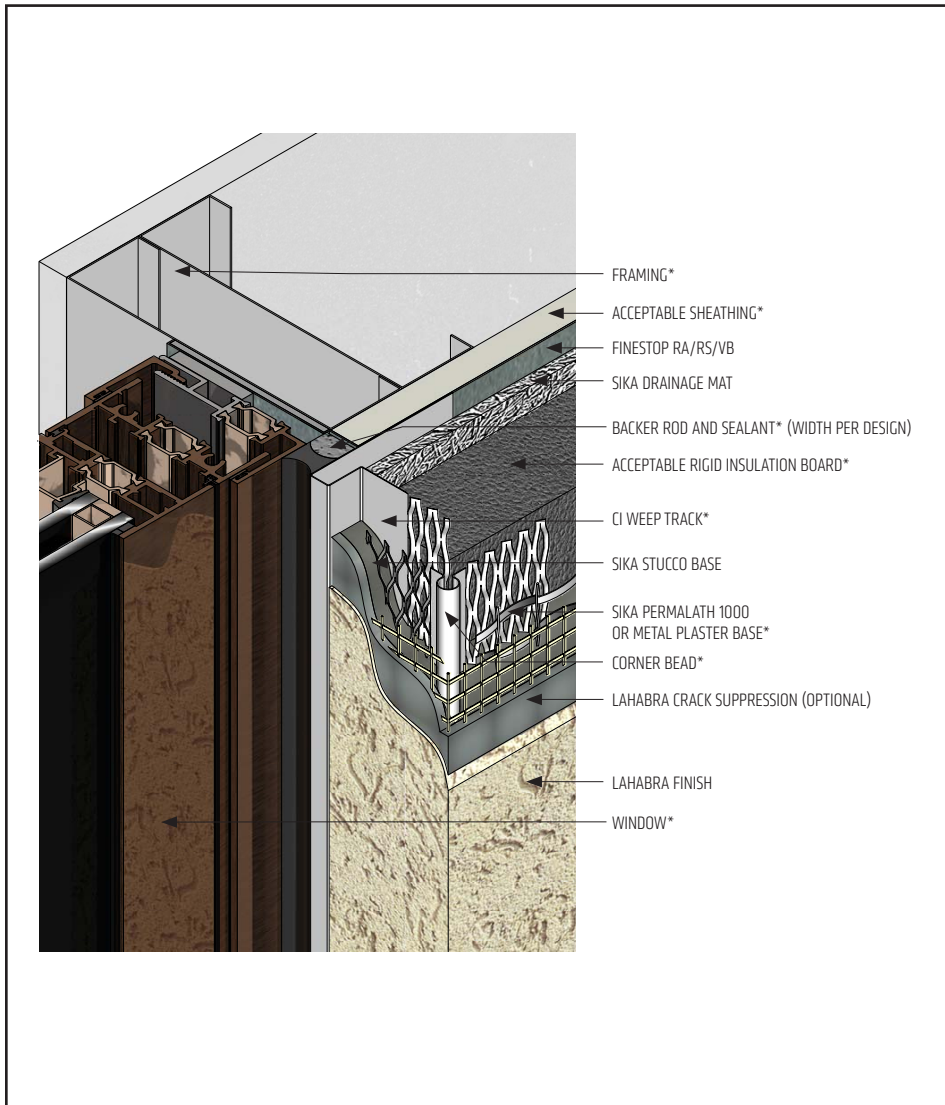
(\*NOTE: BY OTHERS)

The details within are latest recommendations and are represent in good faith by Sika Corporation US (hereinafter Sika). The details are subject to change without notice. Sika accepts no liability for the end use of the details. For conditions not shown, consult Sika for review of specific details.

- Install Sika materials in accordance with current product & safety data sheets, system specification & details installation instructions.
- Unsatisfactory conditions shall be reported to the General Contractor and corrected before the application of Sika products.

# Fastwall CI WaterMaster with Drain Mat

## TYPICAL WINDOW JAMB (RECESSED)



- Ensure Finestop air/water-resistive barrier is properly applied into rough opening in accordance with application guidelines. Reference Finestop air/water-resistive barrier details.
- Use non-hole punched version of CI Weep Track on jambs.
- LaHabra Joint/Transition Treatment Options: SikaWall MaxFlash, SikaWall Sheathing Fabric embedded in Finestop RA/RS/VB or SikaWall Flash Seal NP.
- LaHabra Crack Suppression: Standard Mesh 4 or SikaWall SRT Mesh embedded in LaHabra Base Coat or SikaWall Stucco Surface Leveler.

PCISU-18 2404

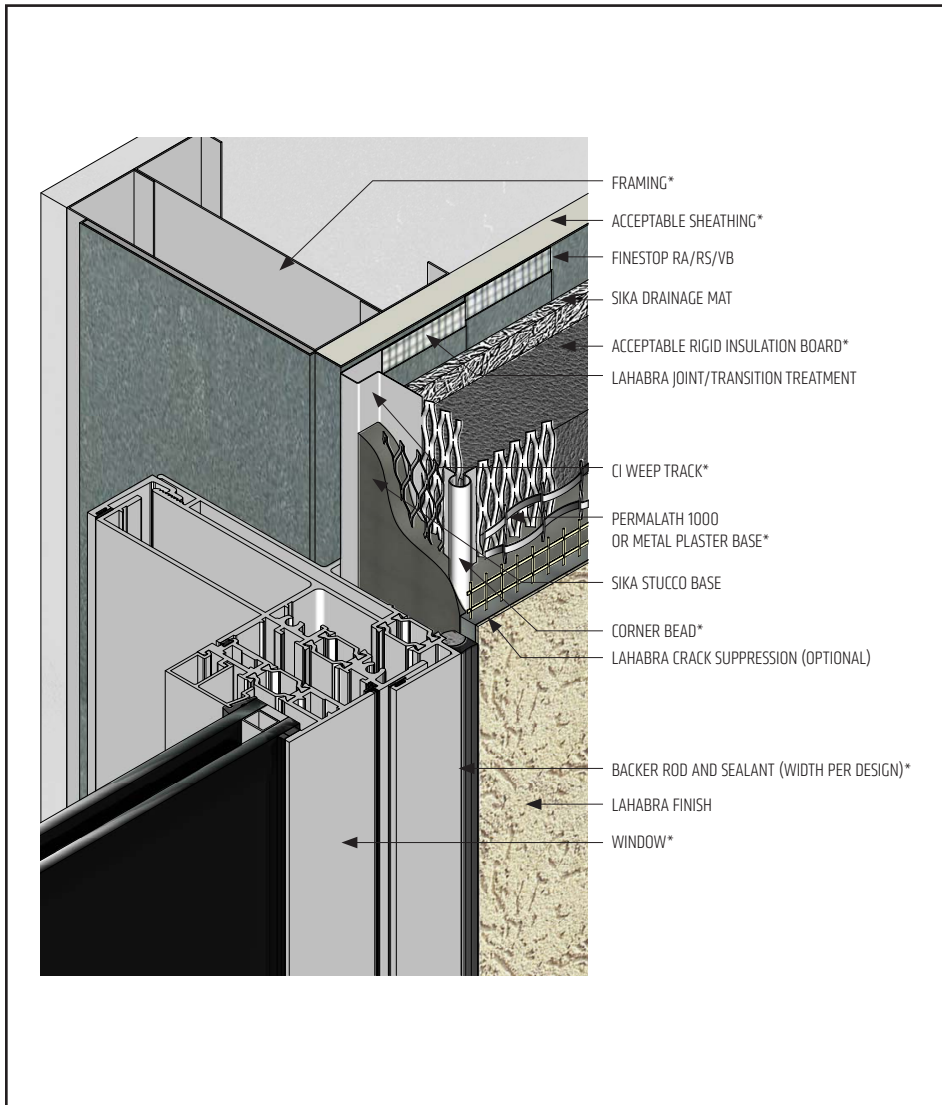
(\*NOTE: BY OTHERS)

The details within are latest recommendations and are represent in good faith by Sika Corporation US (hereinafter Sika). The details are subject to change without notice. Sika accepts no liability for the end use of the details. For conditions not shown, consult Sika for review of specific details.

- Install Sika materials in accordance with current product & safety data sheets, system specification & details installation instructions.
- Unsatisfactory conditions shall be reported to the General Contractor and corrected before the application of Sika products.

# Fastwall CI WaterMaster with Drain Mat

## TYPICAL FLANGED WINDOW JAMB



- Ensure Finestop air/water-resistive barrier is properly applied into rough opening in accordance with application guidelines. Reference Finestop air/water-resistive barrier details.
- As recommended by window manufacturer, apply sealant to back of window flange at jamb prior to installation of window.
- Use non-hole punched version of CI Weep Track on jambs.
- Use LaHabra Transition Treatment to lap over CI Weep Track flange.
- LaHabra Joint/Transition Treatment Options: SikaWall MaxFlash, SikaWall Sheathing Fabric embedded in Finestop RA/RS/VB or SikaWall Flash Seal NP.
- LaHabra Crack Suppression: Standard Mesh 4 or SikaWall SRT Mesh embedded in LaHabra Base Coat or SikaWall Stucco Surface Leveler.

PCISU-19 2404

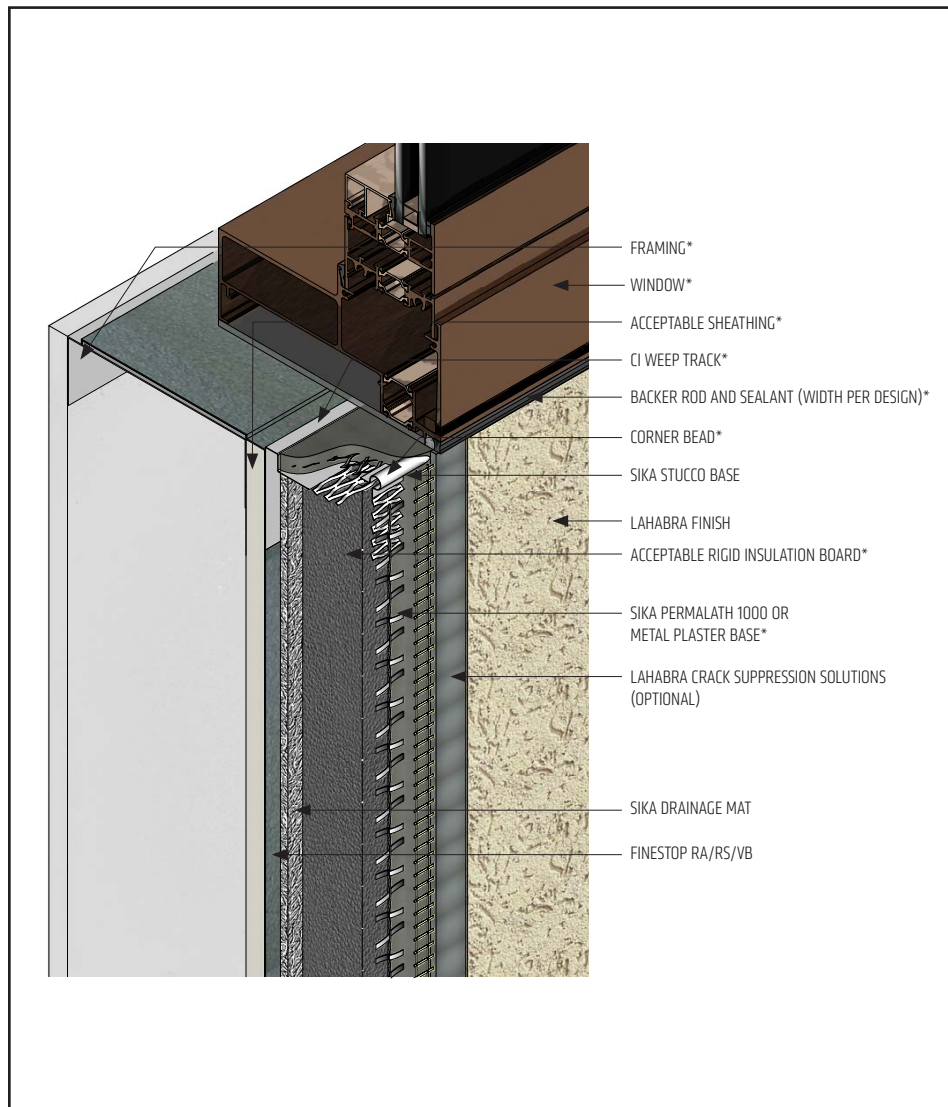
(\*NOTE: BY OTHERS)

The details within are latest recommendations and are represent in good faith by Sika Corporation US (hereinafter Sika). The details are subject to change without notice. Sika accepts no liability for the end use of the details. For conditions not shown, consult Sika for review of specific details.

- Install Sika materials in accordance with current product & safety data sheets, system specification & details installation instructions.
- Unsatisfactory conditions shall be reported to the General Contractor and corrected before the application of Sika products.

# Fastwall CI WaterMaster with Drain Mat

## TYPICAL WINDOW SILL (FLUSH)



- Ensure Finestop air/water-resistive barrier is properly applied into rough opening in accordance with application guidelines. Reference Finestop air/water-resistive barrier details.
- Do not apply finish into joint to receive sealant.
- Use non-hole punched version of CI Weep Track on sill.
- LaHabra Crack Suppression: Standard Mesh 4 or SikaWall SRT Mesh embedded in LaHabra Base Coat or SikaWall Stucco Surface Leveler.

PCISU-20 2404

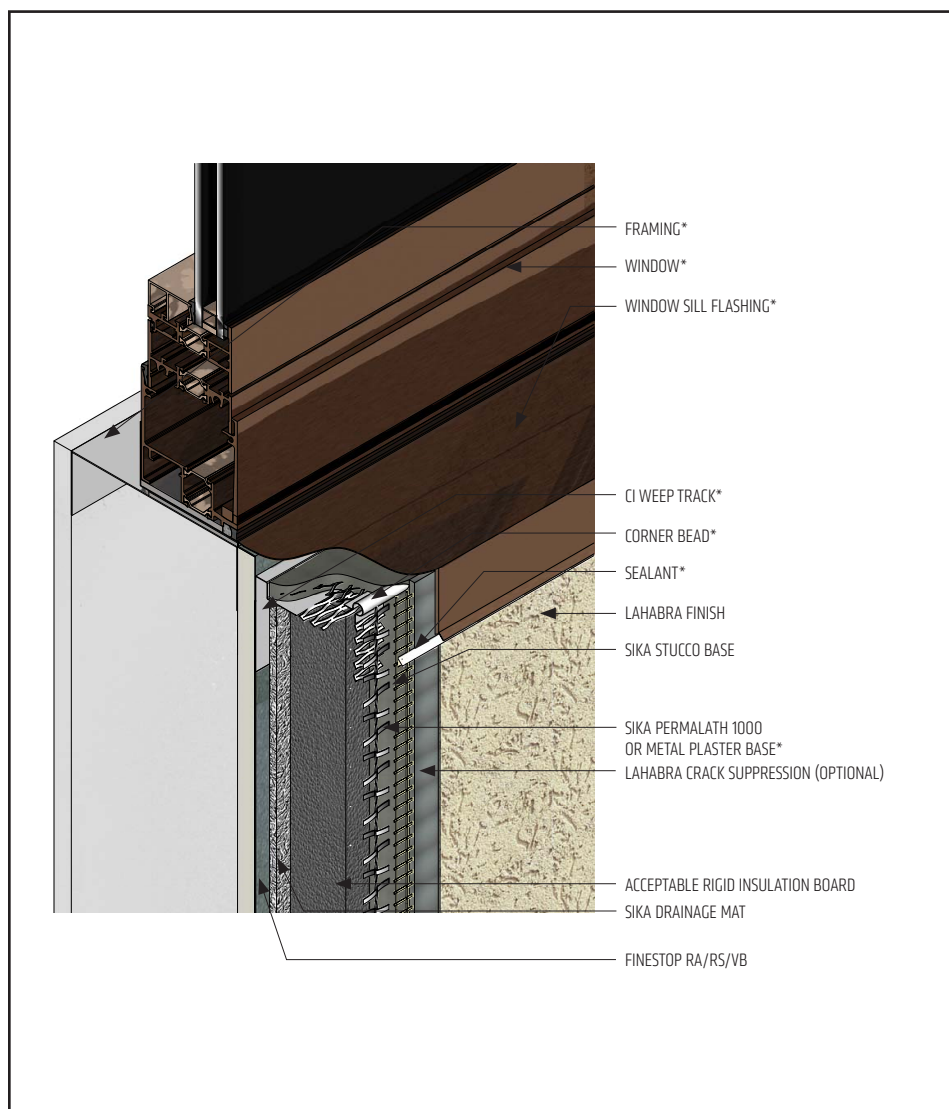
(\*NOTE: BY OTHERS)

The details within are latest recommendations and are represent in good faith by Sika Corporation US (hereinafter Sika). The details are subject to change without notice. Sika accepts no liability for the end use of the details. For conditions not shown, consult Sika for review of specific details.

- Install Sika materials in accordance with current product & safety data sheets, system specification & details installation instructions.
- Unsatisfactory conditions shall be reported to the General Contractor and corrected before the application of Sika products.

## Fastwall CI WaterMaster with Drain Mat

### TYPICAL WINDOW SILL (RECESSED)



- Ensure Finestop air/water-resistive barrier is properly applied into rough opening in accordance with application guidelines. Reference Finestop air/water-resistive barrier details.
- Use non-hole punched version of CI Weep Track on sill.
- LaHabra Crack Suppression: Standard Mesh 4 or SikaWall SRT Mesh embedded in LaHabra Base Coat or SikaWall Stucco Surface Leveler.

PCISU-21 2404

(\*NOTE: BY OTHERS)

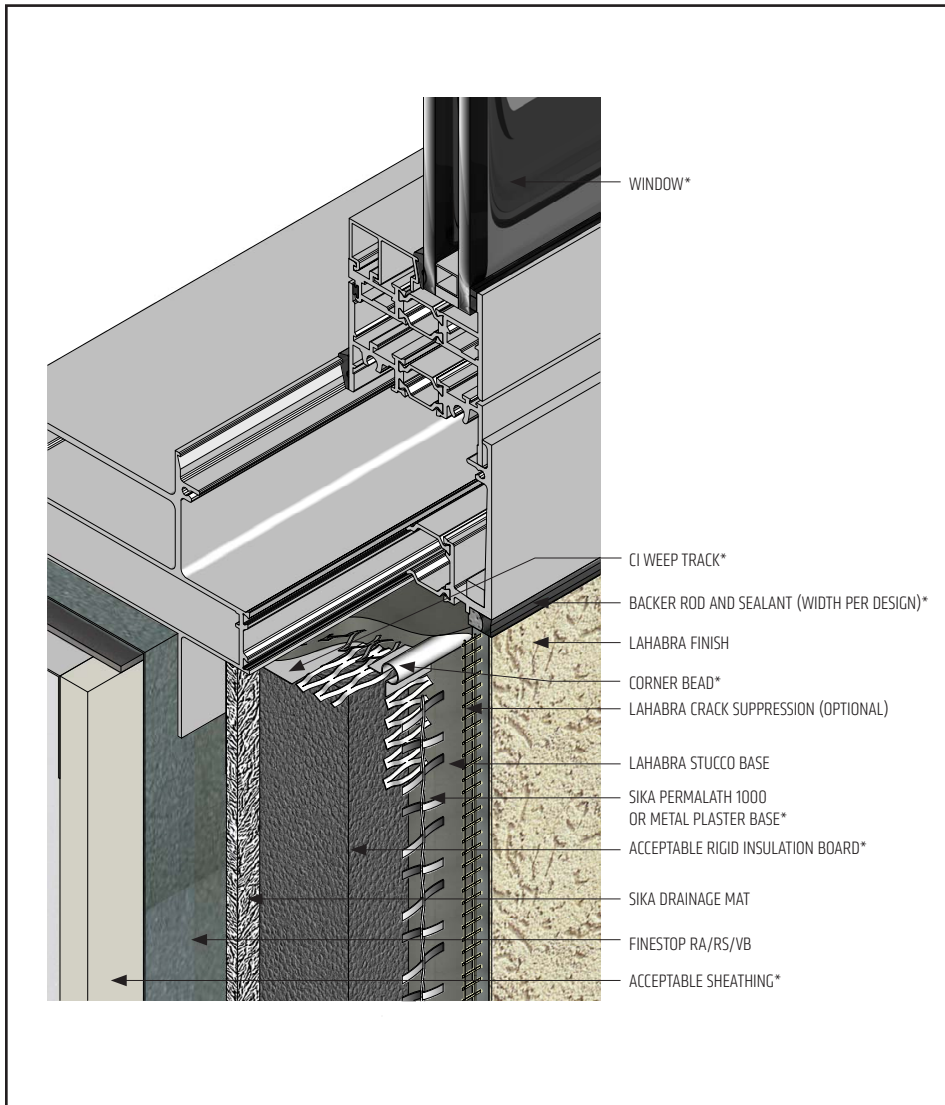
The details within are latest recommendations and are represent in good faith by Sika Corporation US (hereinafter Sika). The details are subject to change without notice. Sika accepts no liability for the end use of the details. For conditions not shown, consult Sika for review of specific details.

- Install Sika materials in accordance with current product & safety data sheets, system specification & details installation instructions.
- Unsatisfactory conditions shall be reported to the General Contractor and corrected before the application of Sika products.



# Fastwall CI WaterMaster with Drain Mat

## TYPICAL FLANGED WINDOW SILL



- Ensure Finestop air/water-resistive barrier is properly applied into rough opening in accordance with application guidelines. Reference Finestop air/water-resistive barrier details.
- Do not seal window sill flange unless recommended by window manufacturer.
- Use non-hole punched version of CI Weep Track on sill.
- LaHabra Crack Suppression: Standard Mesh 4 or SikaWall SRT Mesh embedded in LaHabra Base Coat or SikaWall Stucco Surface Leveler.

PCISU-22 2404

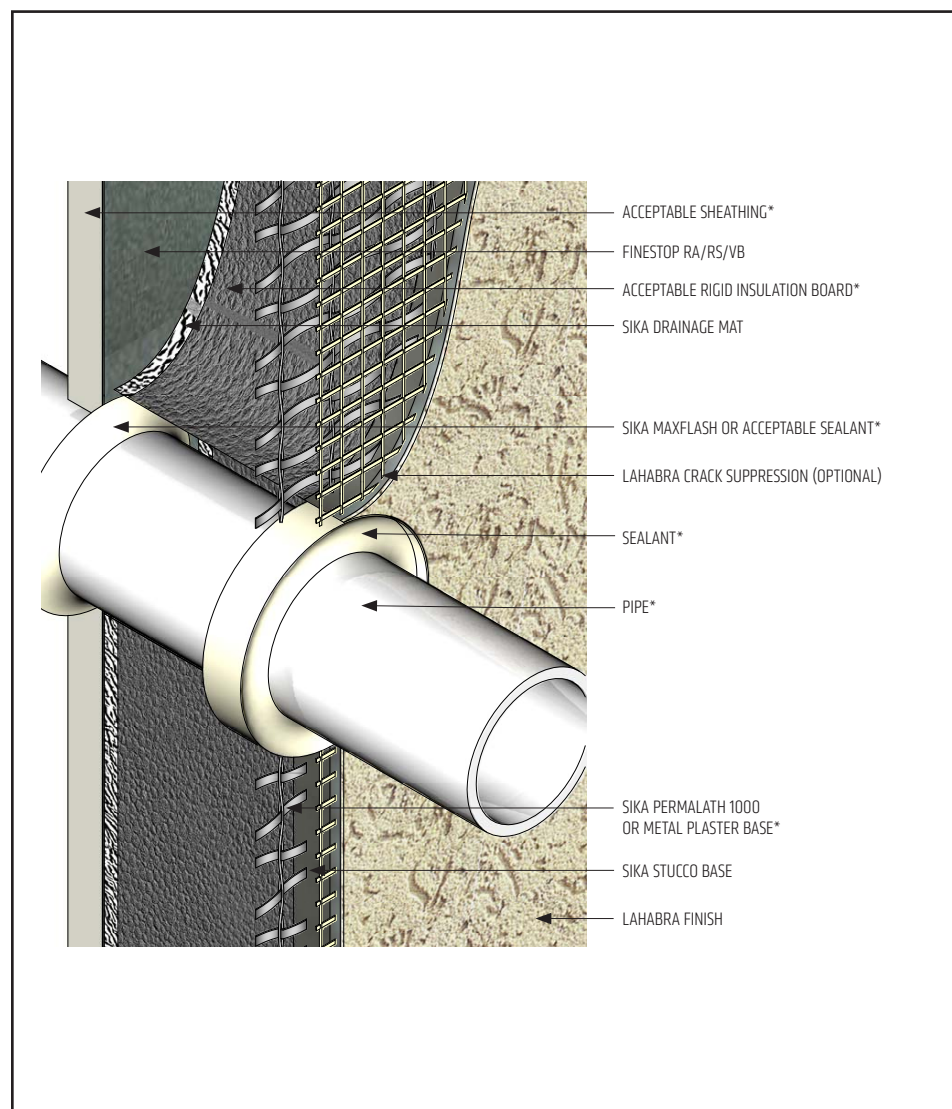
(\*NOTE: BY OTHERS)

The details within are latest recommendations and are represent in good faith by Sika Corporation US (hereinafter Sika). The details are subject to change without notice. Sika accepts no liability for the end use of the details. For conditions not shown, consult Sika for review of specific details.

- Install Sika materials in accordance with current product & safety data sheets, system specification & details installation instructions.
- Unsatisfactory conditions shall be reported to the General Contractor and corrected before the application of Sika products.

# Fastwall CI WaterMaster with Drain Mat

## TYPICAL PIPE PENETRATION



- Ensure all penetrations into the system are properly sealed.
- Provide continuous air seal around perimeter of penetration prior to SikaWall Drainage Mat application.
- LaHabra Crack Suppression: Standard Mesh 4 or SikaWall SRT Mesh embedded in LaHabra Base Coat or SikaWall Stucco Surface Leveler.

PCISU-23 2404

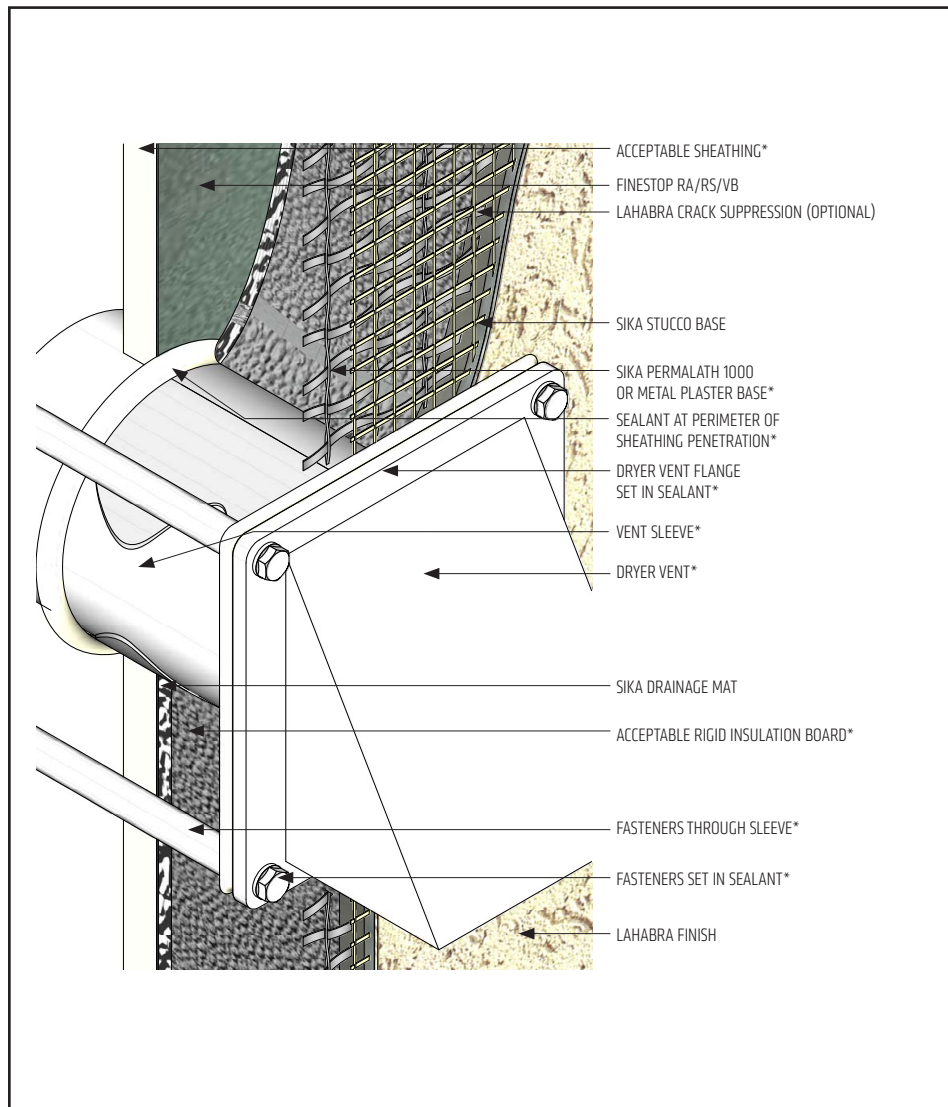
(\*NOTE: BY OTHERS)

The details within are latest recommendations and are represent in good faith by Sika Corporation US (hereinafter Sika). The details are subject to change without notice. Sika accepts no liability for the end use of the details. For conditions not shown, consult Sika for review of specific details.

- Install Sika materials in accordance with current product & safety data sheets, system specification & details installation instructions.
- Unsatisfactory conditions shall be reported to the General Contractor and corrected before the application of Sika products.

# Fastwall CI WaterMaster with Drain Mat

## TYPICAL DRYER VENT



PCISU-24 2404

(\*NOTE: BY OTHERS)

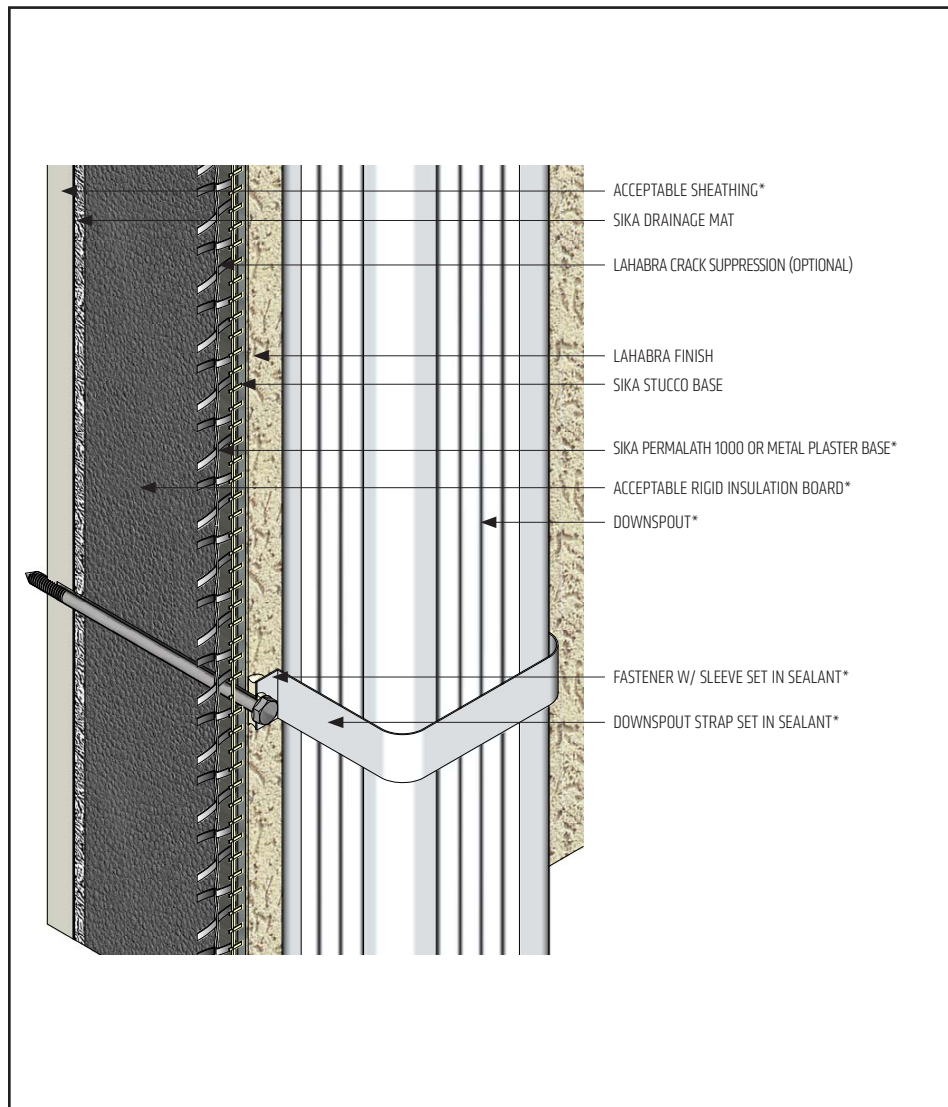
- LaHabra Transition Treatment can be applied from sheathing onto vent pipe in lieu of the secondary seal.
- Ensure all fastener penetrations through the stucco system are properly sealed.
- LaHabra Joint/Transition Treatment Options: SikaWall MaxFlash, SikaWall Sheathing Fabric embedded in Finestop RS/RS/VB or SikaWall Flash Seal NP.
- LaHabra Crack Suppression: Standard Mesh 4 or SikaWall SRT Mesh embedded in LaHabra Base Coat or SikaWall Stucco Surface Leveler.

The details within are latest recommendations and are represent in good faith by Sika Corporation US (hereinafter Sika). The details are subject to change without notice. Sika accepts no liability for the end use of the details. For conditions not shown, consult Sika for review of specific details.

- Install Sika materials in accordance with current product & safety data sheets, system specification & details installation instructions.
- Unsatisfactory conditions shall be reported to the General Contractor and corrected before the application of Sika products.

# Fastwall CI WaterMaster with Drain Mat

## TYPICAL DOWNSPOUT



- Ensure all fastener penetrations through the stucco system are properly sealed.
- LaHabra Crack Suppression: Standard Mesh 4 or SikaWall SRT Mesh embedded in LaHabra Base Coat or SikaWall Stucco Surface Leveler.

PCISU-25 2404

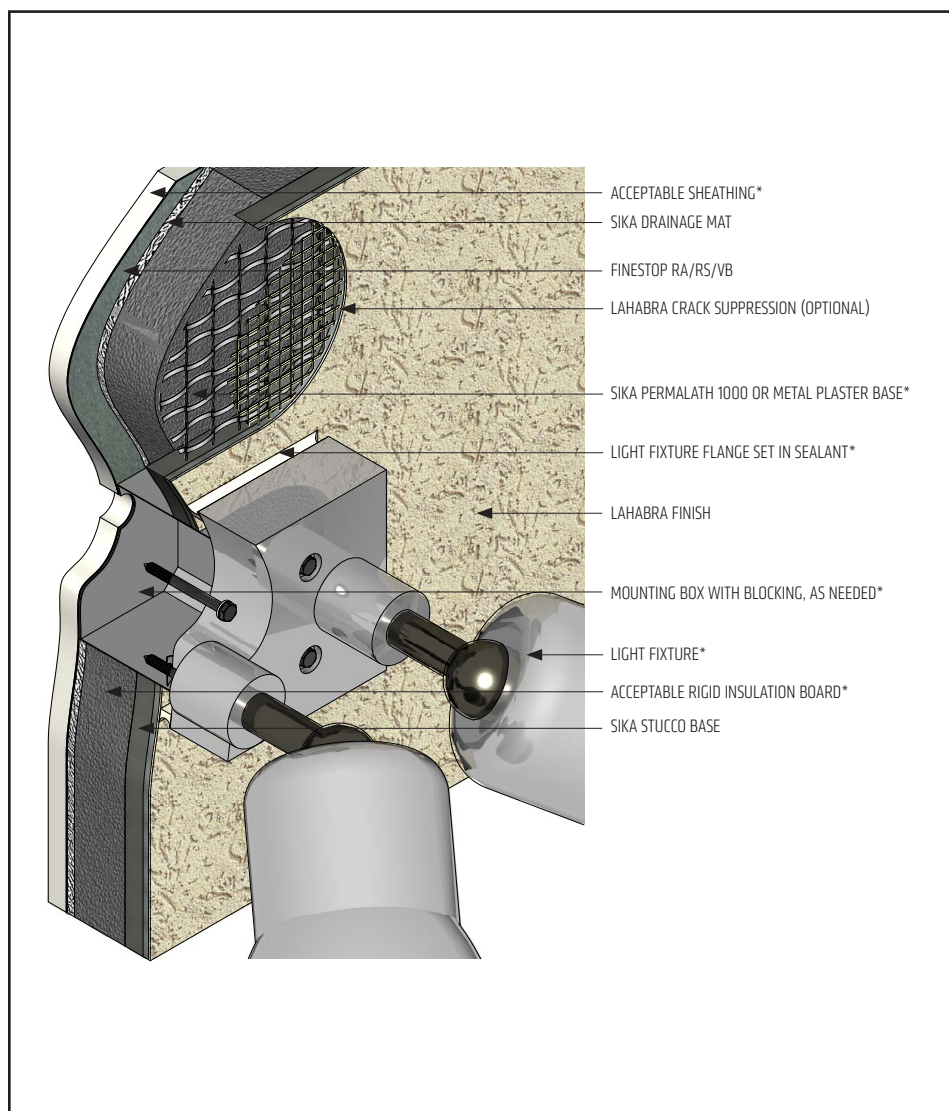
(\*NOTE: BY OTHERS)

The details within are latest recommendations and are represent in good faith by Sika Corporation US (hereinafter Sika). The details are subject to change without notice. Sika accepts no liability for the end use of the details. For conditions not shown, consult Sika for review of specific details.

- Install Sika materials in accordance with current product & safety data sheets, system specification & details installation instructions.
- Unsatisfactory conditions shall be reported to the General Contractor and corrected before the application of Sika products.

## Fastwall CI WaterMaster with Drain Mat

### TYPICAL LIGHT FIXTURE



- Ensure all fastener penetrations through the stucco system are properly sealed.
- LaHabra Crack Suppression: Standard Mesh 4 or SikaWall SRT Mesh embedded in LaHabra Base Coat or SikaWall Stucco Surface Leveler.

PCISU-26 2404

(\*NOTE: BY OTHERS)

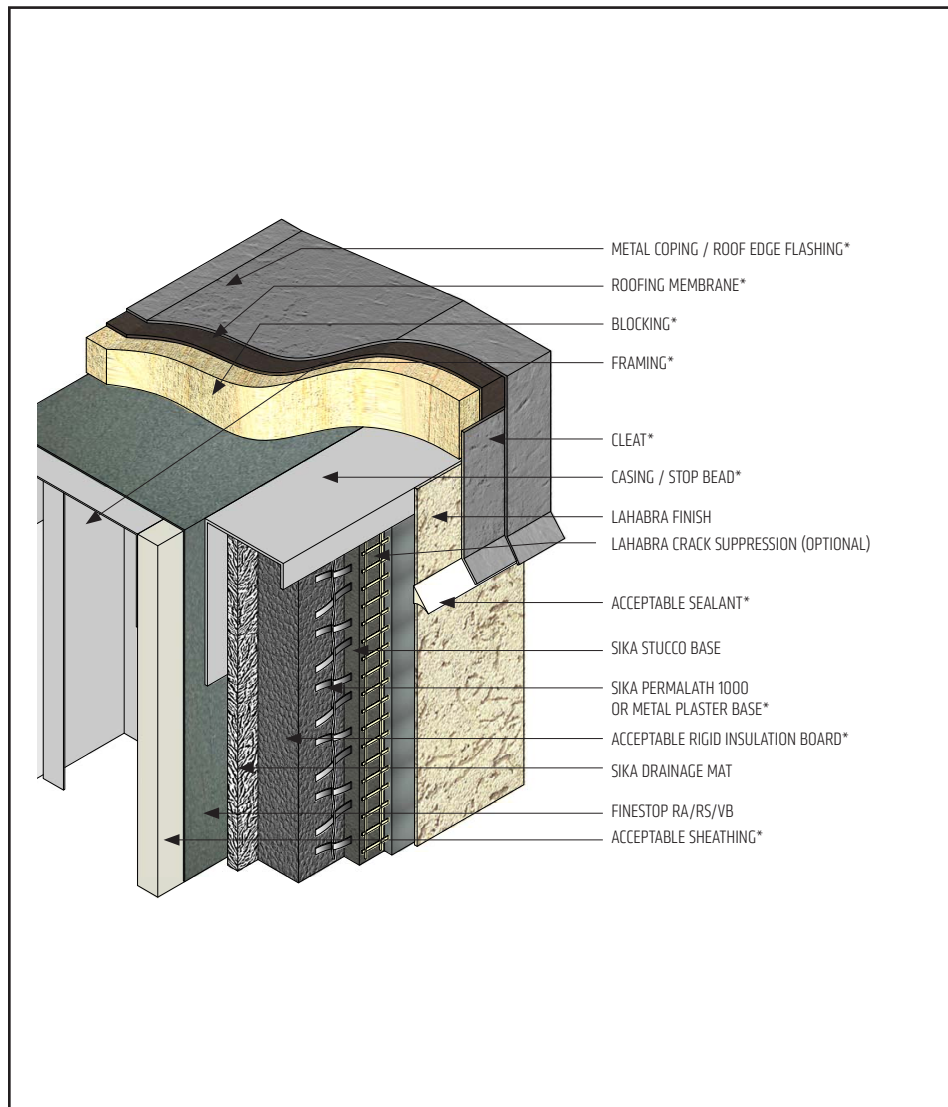
The details within are latest recommendations and are represent in good faith by Sika Corporation US (hereinafter Sika). The details are subject to change without notice. Sika accepts no liability for the end use of the details. For conditions not shown, consult Sika for review of specific details.

- Install Sika materials in accordance with current product & safety data sheets, system specification & details installation instructions.
- Unsatisfactory conditions shall be reported to the General Contractor and corrected before the application of Sika products.



# Fastwall CI WaterMaster with Drain Mat

## TYPICAL TERMINATION AT METAL COPING / ROOF EDGE FLASHING – OPTION 01



- It is recommended to lap coping or roof edge flashing over the stucco system a minimum of 2" (50 mm) with drip edge sealed.
- LaHabra Crack Suppression: Standard Mesh 4 or SikaWall SRT Mesh embedded in LaHabra Base Coat or SikaWall Stucco Surface Leveler.

PCISU-27 2404

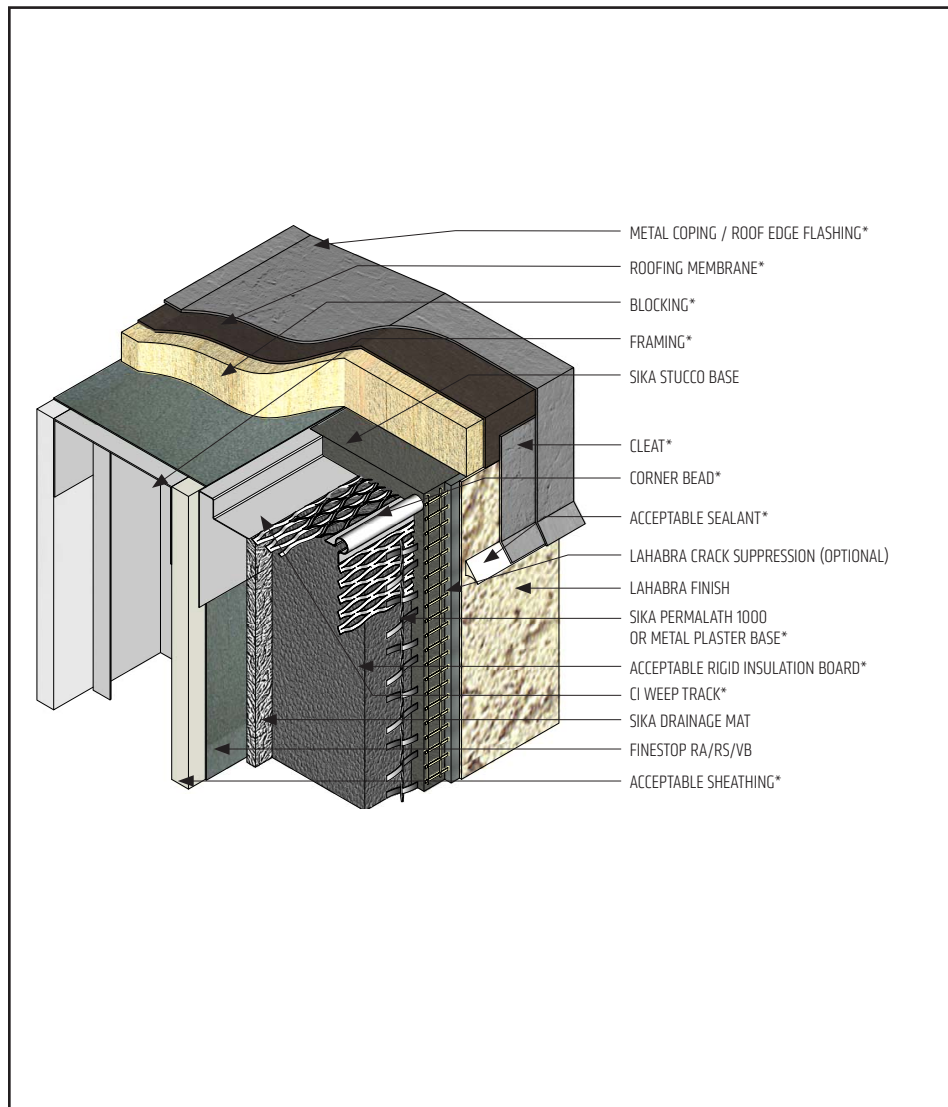
(\*NOTE: BY OTHERS)

The details within are latest recommendations and are represent in good faith by Sika Corporation US (hereinafter Sika). The details are subject to change without notice. Sika accepts no liability for the end use of the details. For conditions not shown, consult Sika for review of specific details.

- Install Sika materials in accordance with current product & safety data sheets, system specification & details installation instructions.
- Unsatisfactory conditions shall be reported to the General Contractor and corrected before the application of Sika products.

# Fastwall CI WaterMaster with Drain Mat

## TYPICAL TERMINATION AT METAL COPING / ROOF EDGE FLASHING - OPTION 02



- It is recommended to lap coping or roof edge flashing over the stucco system a minimum of 2" (50 mm) with drip edge sealed.
- LaHabra Crack Suppression: Standard Mesh 4 or SikaWall SRT Mesh embedded in LaHabra Base Coat or SikaWall Stucco Surface Leveler.

PCISU-28 2404

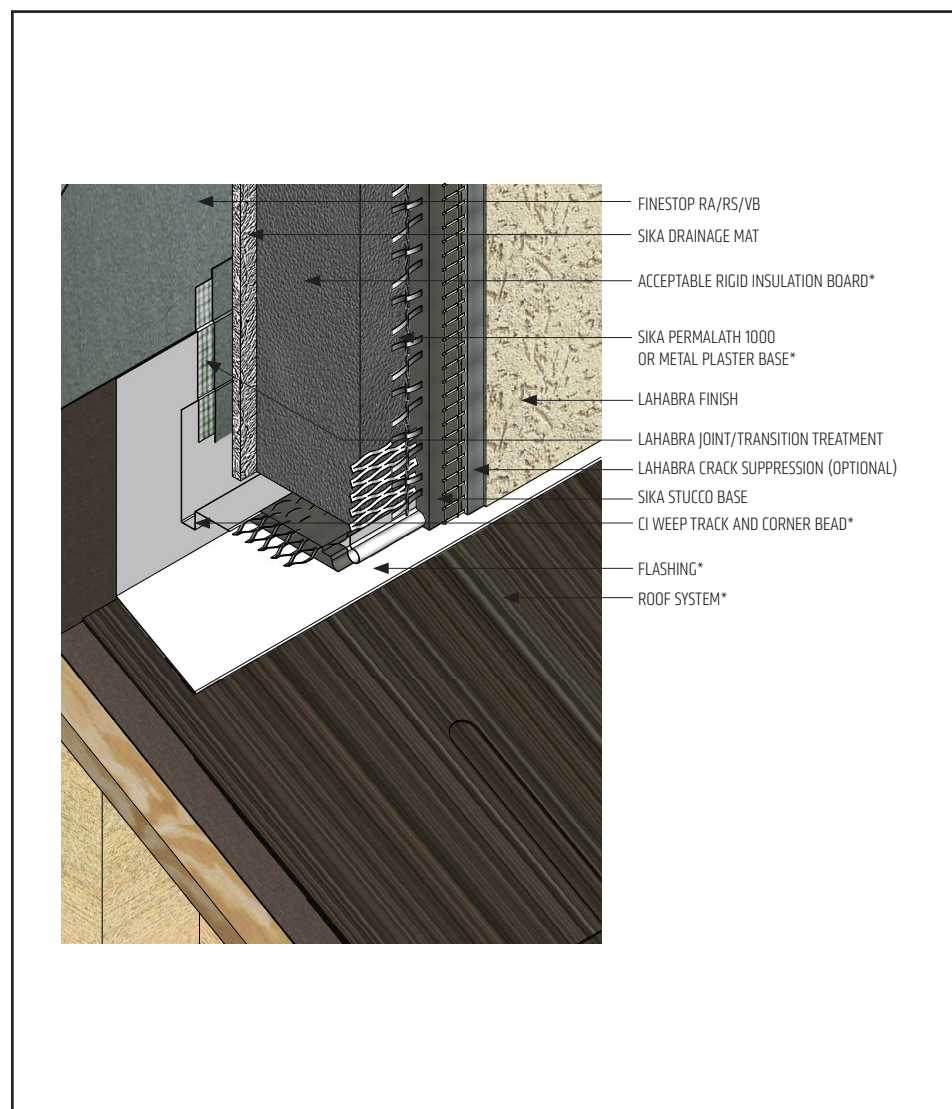
(\*NOTE: BY OTHERS)

The details within are latest recommendations and are represent in good faith by Sika Corporation US (hereinafter Sika). The details are subject to change without notice. Sika accepts no liability for the end use of the details. For conditions not shown, consult Sika for review of specific details.

- Install Sika materials in accordance with current product & safety data sheets, system specification & details installation instructions.
- Unsatisfactory conditions shall be reported to the General Contractor and corrected before the application of Sika products.

## Fastwall CI WaterMaster with Drain Mat

### TYPICAL FLASHING / TERMINATION AT ROOF



- Use LaHabra Transition Treatment to lap on to the CI Weep Track flange.
- Terminate stucco system a minimum of 2" (50 mm) above sloped roof.
- LaHabra Joint/Transition Treatment Options: SikaWall MaxFlash, SikaWall Sheathing Fabric embedded in Finestop RA/RS/VB or SikaWall Flash Seal NP.
- LaHabra Crack Suppression: Standard Mesh 4 or SikaWall SRT Mesh embedded in LaHabra Base Coat or SikaWall Stucco Surface Leveler.

PCISU-29 2404

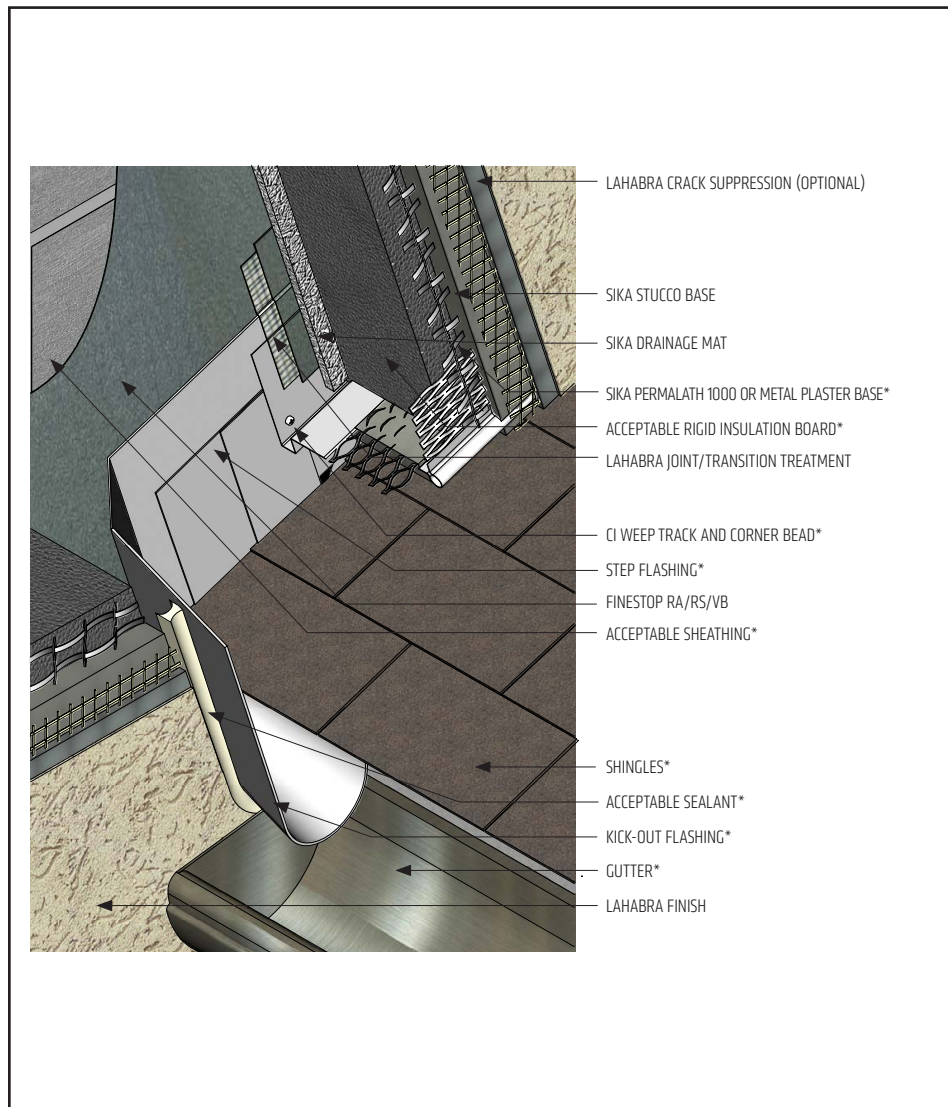
(\*NOTE: BY OTHERS)

The details within are latest recommendations and are represent in good faith by Sika Corporation US (hereinafter Sika). The details are subject to change without notice. Sika accepts no liability for the end use of the details. For conditions not shown, consult Sika for review of specific details.

- Install Sika materials in accordance with current product & safety data sheets, system specification & details installation instructions.
- Unsatisfactory conditions shall be reported to the General Contractor and corrected before the application of Sika products.

# Fastwall CI WaterMaster with Drain Mat

## TYPICAL KICK-OUT FLASHING



- Use LaHabra Transition Treatment to lap on to the CI Weep Track flange.
- Terminate stucco system a minimum of 2" (50 mm) above sloped roof.
- Extend step flashing 2" (50 mm) behind stucco system.
- Kickout flashing: sealed or soldered seams, recommended minimum 4" (100 mm) in height, extend 2" (50 mm) from wall and angled to direct water into gutter/away from wall surface.
- LaHabra Joint/Transition Treatment Options: SikaWall MaxFlash, SikaWall Sheathing Fabric embedded in Finestop RS/RS/VB or SikaWall Flash Seal NP.
- LaHabra Crack Suppression: Standard Mesh 4 or SikaWall SRT Mesh embedded in LaHabra Base Coat or SikaWall Stucco Surface Leveler.

PCISU-30 2404

(\*NOTE: BY OTHERS)

The details within are latest recommendations and are represent in good faith by Sika Corporation US (hereinafter Sika). The details are subject to change without notice. Sika accepts no liability for the end use of the details. For conditions not shown, consult Sika for review of specific details.

- Install Sika materials in accordance with current product & safety data sheets, system specification & details installation instructions.
- Unsatisfactory conditions shall be reported to the General Contractor and corrected before the application of Sika products.

## LIMITED WARRANTY NOTICE

Prior to each use of any product of Sika Corporation, its subsidiaries or affiliates ("SIKA"), the user must always read and follow the warnings and instructions on the product's most current product label, Product Data Sheet and Safety Data Sheet which are available at [usa.sika.com/lahabra](http://usa.sika.com/lahabra) or by calling our Technical Service Department at +1 (800) 226-2424.

Nothing contained in any SIKA literature or materials relieves the user of the obligation to read and follow the warnings and instructions for each SIKA product as set forth in the current product label, Product Data Sheet and Safety Data Sheet prior to use of the SIKA product.

SIKA warrants this product for one year from date of installation to be free from manufacturing defects and to meet the technical properties on the current Product Data Sheet if used as directed within the product's shelf life. User determines suitability of product for intended use and assumes all risks. User's and/or buyer's sole remedy shall be limited to the purchase price or replacement of this product exclusive of any labor costs. NO OTHER WARRANTIES EXPRESS OR IMPLIED SHALL APPLY INCLUDING ANY WARRANTY OF MERCHANTABILITY OR FITNESS FOR A PARTICULAR PURPOSE. SIKA SHALL NOT BE LIABLE UNDER ANY LEGAL THEORY FOR SPECIAL OR CONSEQUENTIAL DAMAGES. SIKA SHALL NOT BE RESPONSIBLE FOR THE USE OF THIS PRODUCT IN A MANNER TO INFRINGE ON ANY PATENT OR ANY OTHER INTELLECTUAL PROPERTY RIGHTS HELD BY OTHERS. Sale of SIKA products are subject to the Terms and Conditions of Sale which are available at [usa.sika.com](http://usa.sika.com).



For the most current version of this literature, please visit our website at [usa.sika.com/lahabra](http://usa.sika.com/lahabra).

**Sika Corporation**

201 Polito Avenue  
Lyndhurst, NJ 07071 USA  
Customer Service +1 (800) 433-9517  
Technical Service +1 (800) 226-2424  
[usa.sika.com/lahabra](http://usa.sika.com/lahabra)

Rev March 2025

**BUILDING TRUST**

