

**PAREX<sup>®</sup>**



# Parex EIFS Resurfacing System

Typical 2D Details

**BUILDING TRUST**



# Parex EIFS Resurfacing System

## Typical 2D Details

### Table of Contents

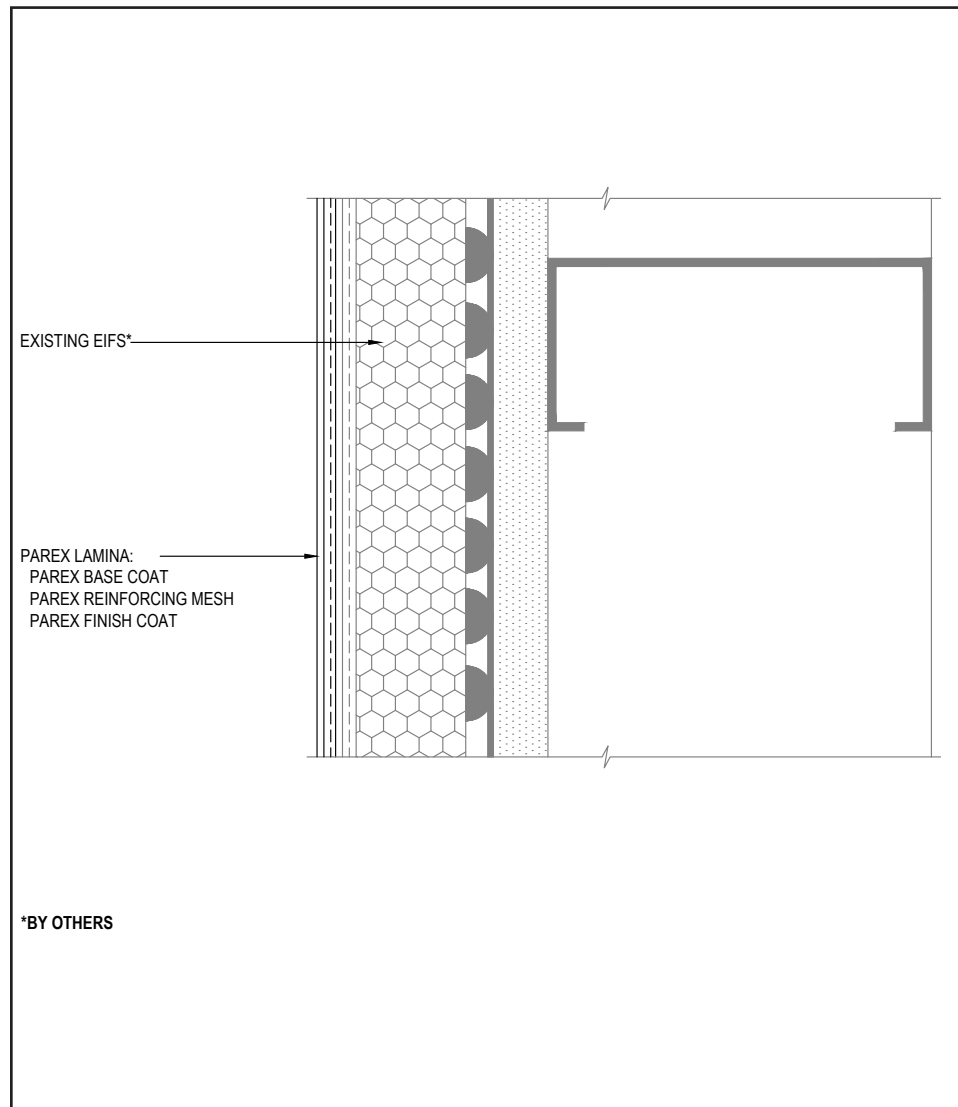
1. Lamina Application	12A. Expansion Joint at Floor Line
2. Aesthetic Groove	12B. Expansion Joint Detail at Floor Line
3. Window Head (Flush)	13A. Expansion Joint at Change in Substrate
4A. Window Head (Recessed)	13B. Expansion Joint Detail at Change in Substrate
4B. Window Head (Recessed)	14. Section at Fascia - Soffit
5A. Window Jamb (Flush)	15A. Vertical Expansion Joint
5B. Window Jamb (Flush)	15B. Expansion Joint Detail
6A. Window Jamb (Recessed)	16A. Pipe Penetration
6B. Window Jamb (Recessed)	16B. Pipe Penetration
7A. Window Sill Detail (Flush)	17. Outside Corner
7B. Window Sill Detail (Flush)	18. Light Fixture
8. Window Sill (Recessed)	19. Termination at Foundation
9. Roof Edge Flashing	20A. Termination at Foundation (Flush)
10. Metal Coping	20B. Termination at Foundation (Flush)
11. EPS Parapet Cap	21. Kick Out Flashing

### Notes:

- **The details within are the latest recommendations and are represent in good faith by Sika Corporation US (hereinafter Sika). The details are subject to change without notice. Sika accepts no liability for the end use of the details. For conditions not shown, consult Sika for review of specific details.**
- **Install Sika materials in accordance with current installation instructions.**
- **Unsatisfactory conditions shall be reported to the General Contractor and corrected before the application of Sika products.**

# Parex EIFS Resurfacing System

## TYPICAL LAMINA APPLICATION



- Prior to resurfacing, consideration should be given to windows and other penetrations. Replacing sealant, flashing and/or inferior or damaged windows should be completed as part of a major resurfacing project.
- Perform any repairs required beyond the scope of resurfacing. Please reference Technical Bulletins *Procedure for Repairing Stucco* for more information.
- Perform bond testing to confirm base coat adhesion. Please reference Technical Bulletin *Basics of Conducting Field Adhesion Testing* for more information. Apply SikaWall Surface Stabilizer WB to existing paint or acrylic finish as determined by adhesion testing.

01 0525

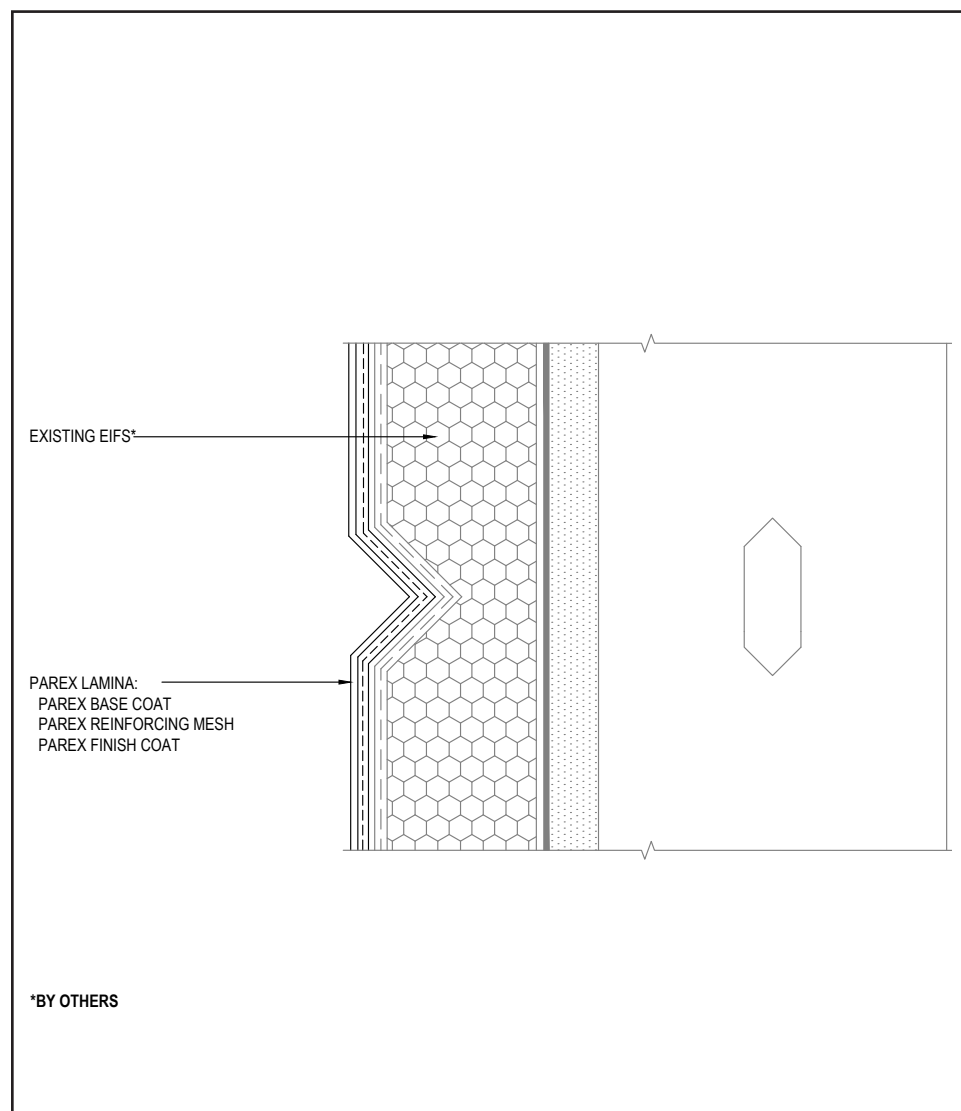
(\*NOTE: BY OTHERS)

The details within are the latest recommendations and are represented in good faith by Sika Corporation US (hereinafter Sika). The details are subject to change without notice. Sika accepts no liability for the end use of the details. For conditions not shown, consult Sika for review of specific details.

- Install Sika materials in accordance with current installation instructions.
- Unsatisfactory conditions shall be reported to the General Contractor and corrected before the application of Sika products.

# Parex EIFS Resurfacing System

## TYPICAL AESTHETIC GROOVE



- Reinforcing mesh shall be continuous and care shall be taken to ensure reinforcing mesh is not cut during base coat application.

02 0525

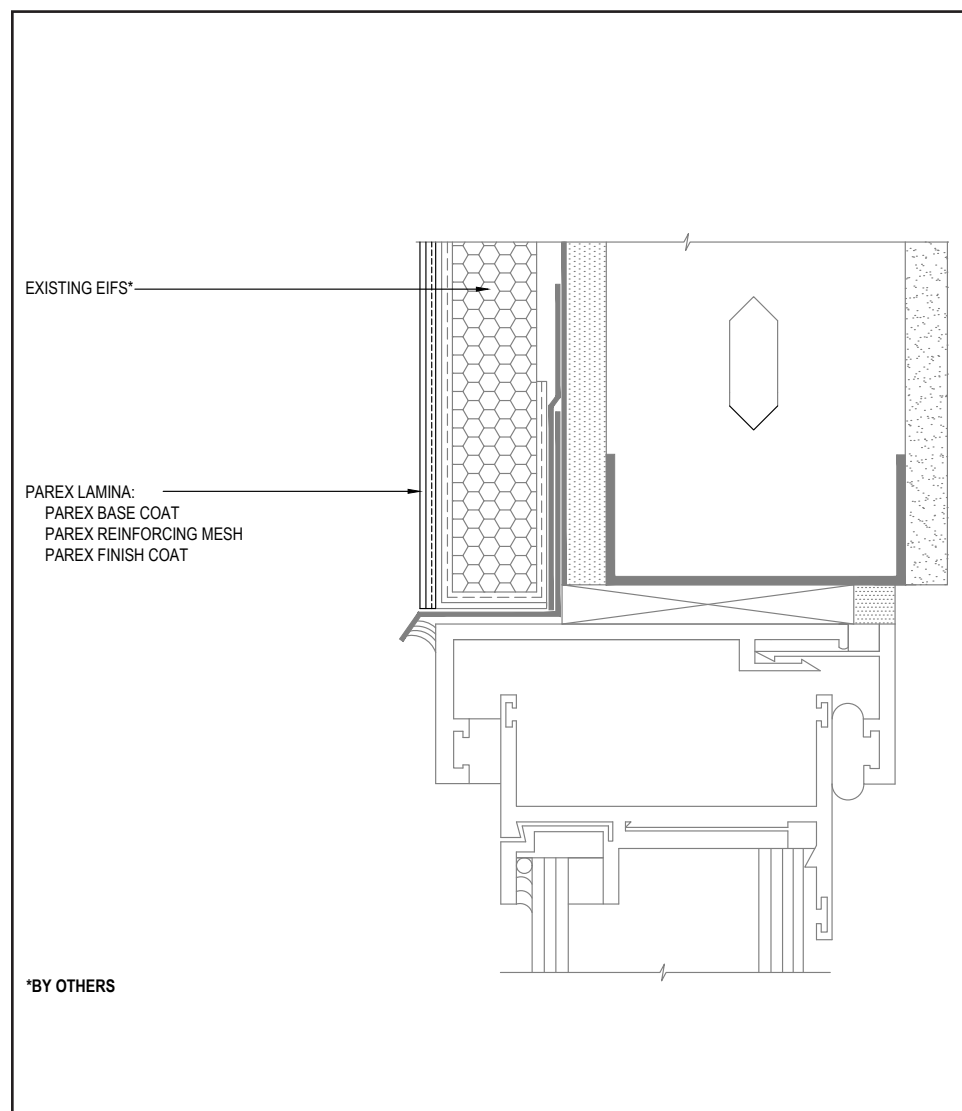
(\*NOTE: BY OTHERS)

The details within are the latest recommendations and are represented in good faith by Sika Corporation US (hereinafter Sika). The details are subject to change without notice. Sika accepts no liability for the end use of the details. For conditions not shown, consult Sika for review of specific details.

- Install Sika materials in accordance with current installation instructions.
- Unsatisfactory conditions shall be reported to the General Contractor and corrected before the application of Sika products.

## Parex EIFS Resurfacing System

### TYPICAL WINDOW HEAD (FLUSH)



03 0525

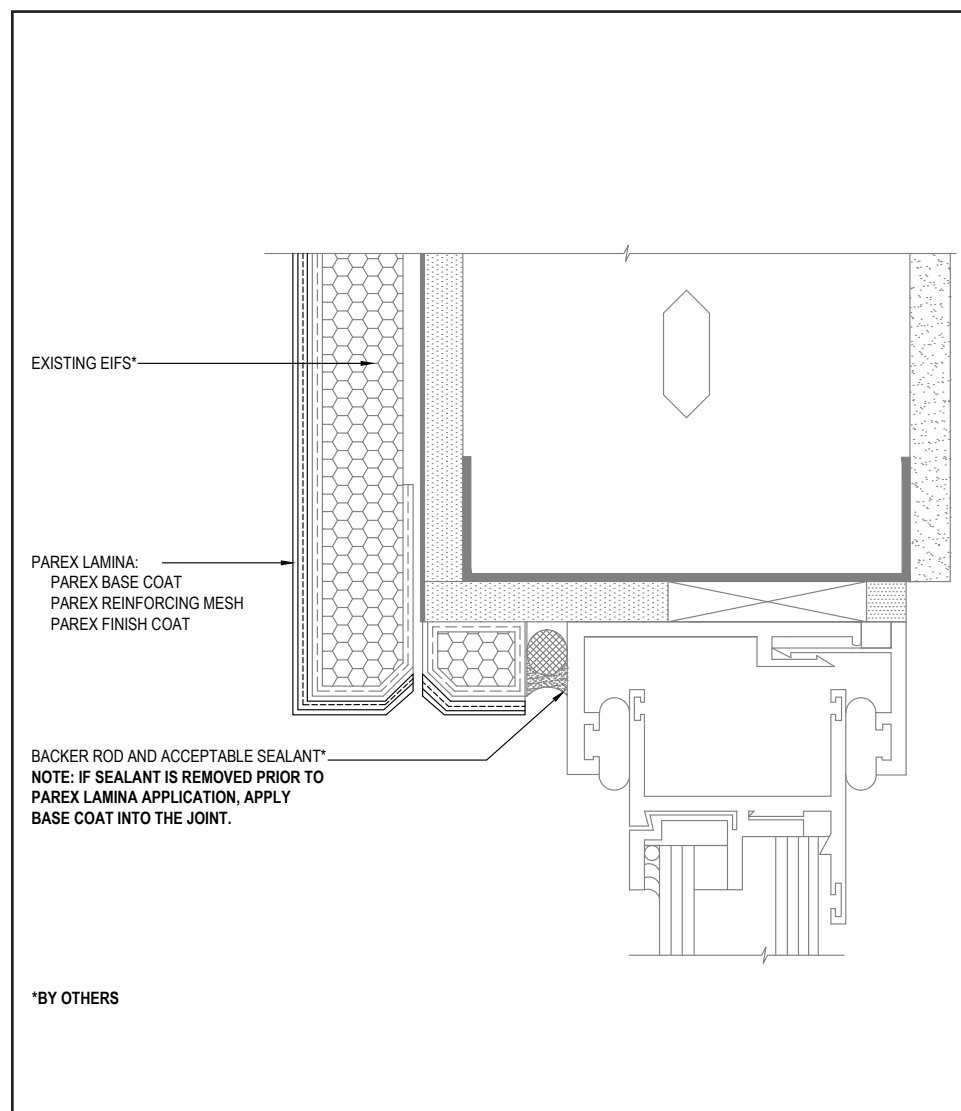
(\*NOTE: BY OTHERS)

The details within are the latest recommendations and are represented in good faith by Sika Corporation US (hereinafter Sika). The details are subject to change without notice. Sika accepts no liability for the end use of the details. For conditions not shown, consult Sika for review of specific details.

- Install Sika materials in accordance with current installation instructions.
- Unsatisfactory conditions shall be reported to the General Contractor and corrected before the application of Sika products.

## Parex EIFS Resurfacing System

### TYPICAL WINDOW HEAD (RECESSED)



04A 0525

(\*NOTE: BY OTHERS)

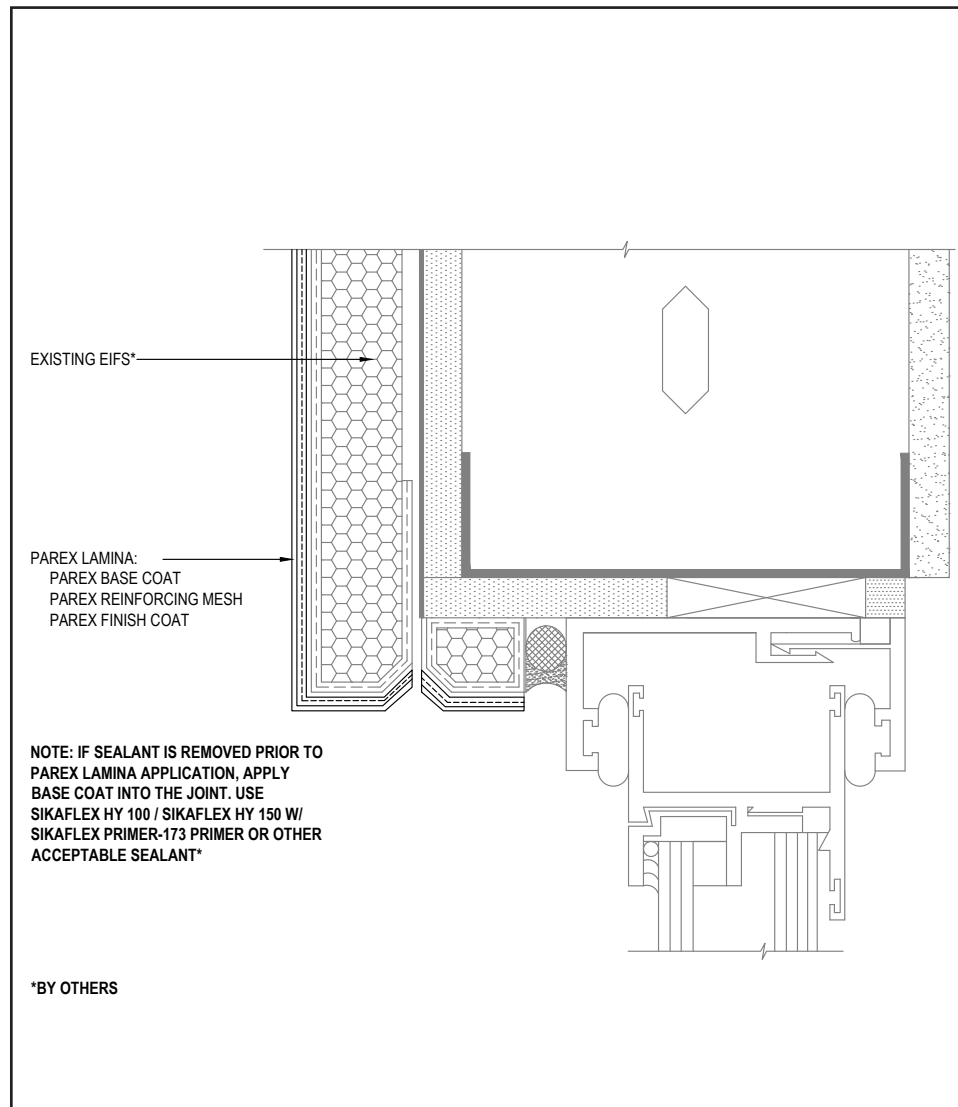
- Do not apply finish to areas that will receive sealant.
- If sealant is removed prior to Parex Lamina application, apply base coat into the joint.
- Use Sikaflex HY 100 Sikaflex HY 150 with Sikaflex Primer 173 or other acceptable sealants. Reference *Acceptable Sealants for use with Parex Wall Systems* Technical Bulletin for a list of sealants.

The details within are the latest recommendations and are represented in good faith by Sika Corporation US (hereinafter Sika). The details are subject to change without notice. Sika accepts no liability for the end use of the details. For conditions not shown, consult Sika for review of specific details.

- Install Sika materials in accordance with current installation instructions.
- Unsatisfactory conditions shall be reported to the General Contractor and corrected before the application of Sika products.

## Parex EIFS Resurfacing System

### TYPICAL WINDOW HEAD (RECESSED)



- Do not apply finish to areas that will receive sealant.
- If sealant is removed prior to Parex Lamina application, apply base coat into the joint.
- Use Sikaflex HY 100 Sikaflex HY 150 with Sikaflex Primer 173 or other acceptable sealants. Reference *Acceptable Sealants for use with Parex Wall Systems* Technical Bulletin for a list of sealants.

04B 0525

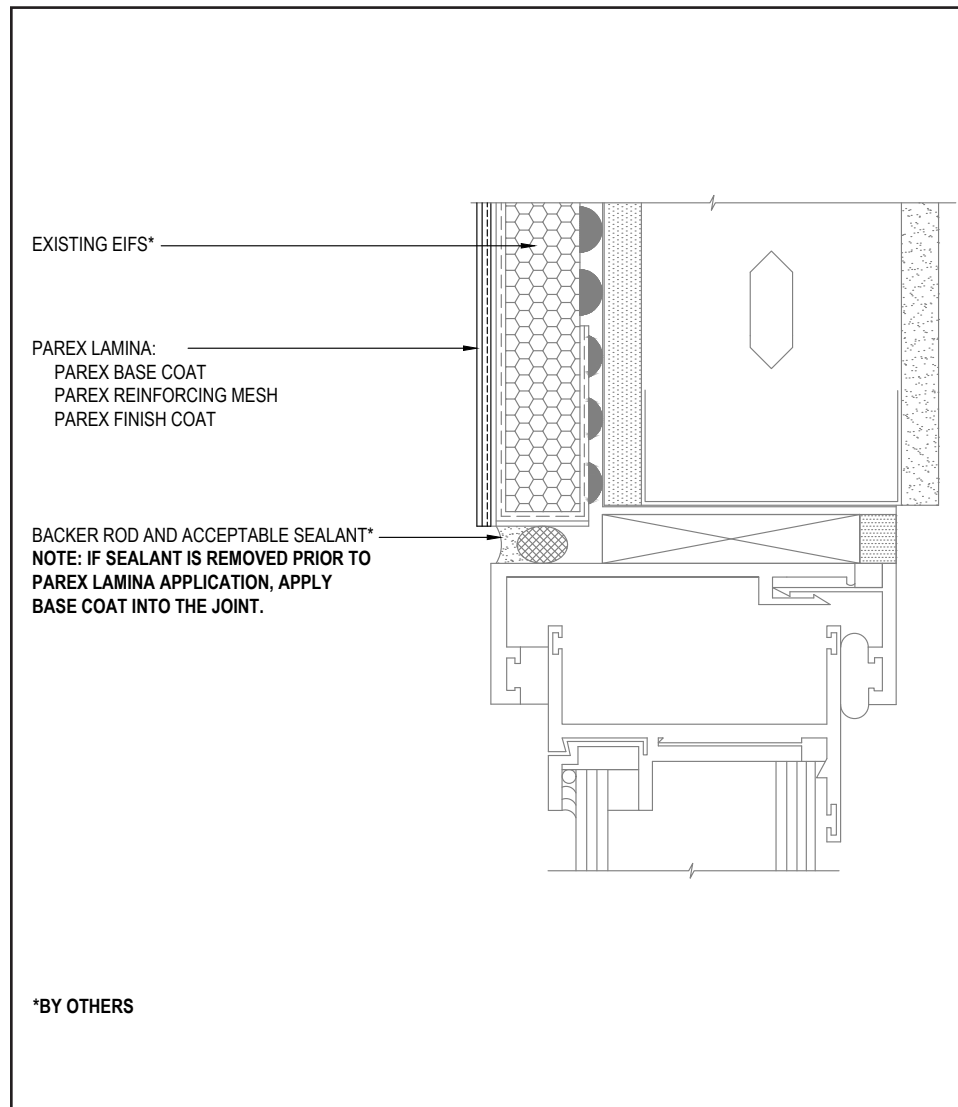
(\*NOTE: BY OTHERS)

The details within are the latest recommendations and are represented in good faith by Sika Corporation US (hereinafter Sika). The details are subject to change without notice. Sika accepts no liability for the end use of the details. For conditions not shown, consult Sika for review of specific details.

- Install Sika materials in accordance with current installation instructions.
- Unsatisfactory conditions shall be reported to the General Contractor and corrected before the application of Sika products.

## Parex EIFS Resurfacing System

### TYPICAL WINDOW JAMB (FLUSH)



05A 0525

(\*NOTE: BY OTHERS)

- Do not apply finish to areas that will receive sealant.
- If sealant is removed prior to Parex Lamina application, apply base coat into the joint.
- Use Sikaflex HY 100 Sikaflex HY 150 with Sikaflex Primer 173 or other acceptable sealants. Reference *Acceptable Sealants for use with Parex Wall Systems* Technical Bulletin for a list of sealants.

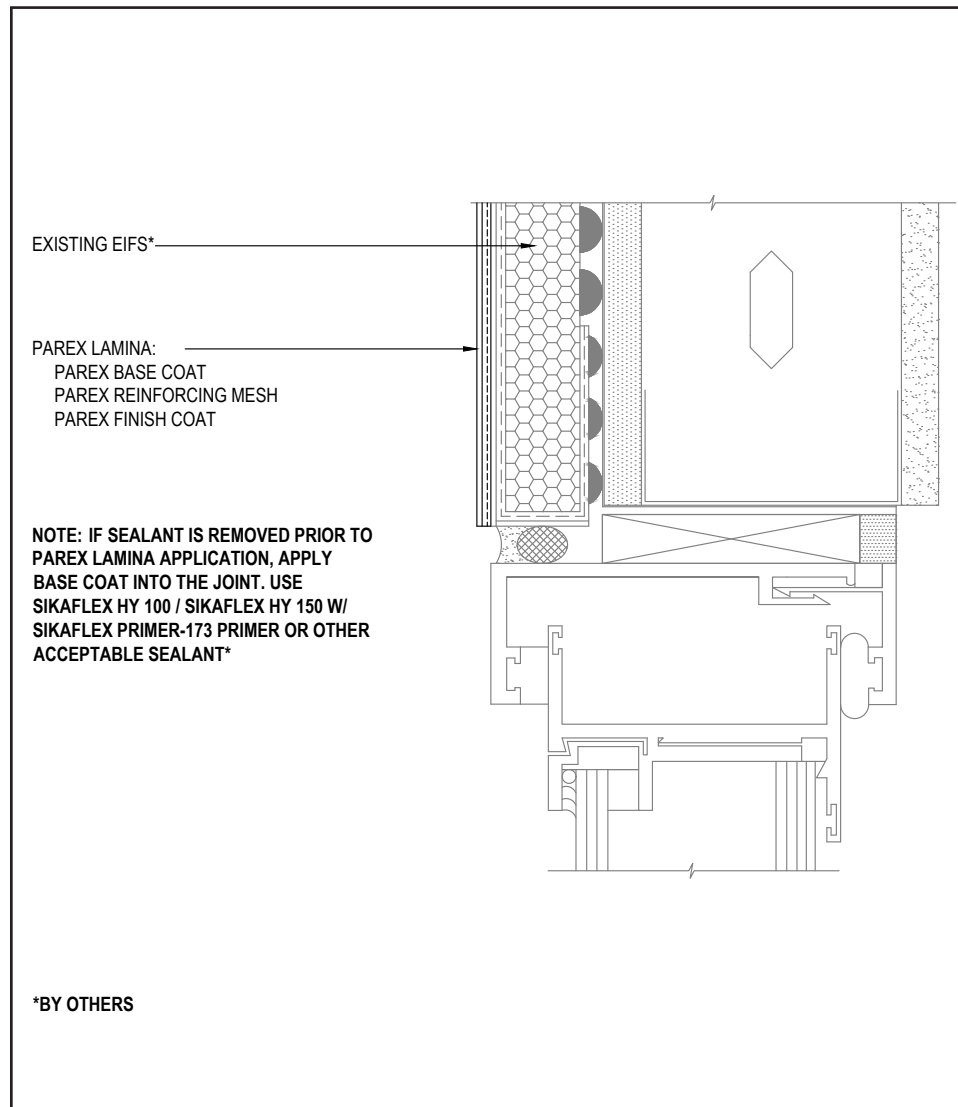
The details within are the latest recommendations and are represented in good faith by Sika Corporation US (hereinafter Sika). The details are subject to change without notice. Sika accepts no liability for the end use of the details. For conditions not shown, consult Sika for review of specific details.

- Install Sika materials in accordance with current installation instructions.
- Unsatisfactory conditions shall be reported to the General Contractor and corrected before the application of Sika products.



## Parex EIFS Resurfacing System

### TYPICAL WINDOW JAMB (FLUSH)



- Do not apply finish to areas that will receive sealant.
- If sealant is removed prior to Parex Lamina application, apply base coat into the joint.
- Use Sikaflex HY 100 Sikaflex HY 150 with Sikaflex Primer 173 or other acceptable sealants. Reference *Acceptable Sealants for use with Parex Wall Systems* Technical Bulletin for a list of sealants.

05B 0525

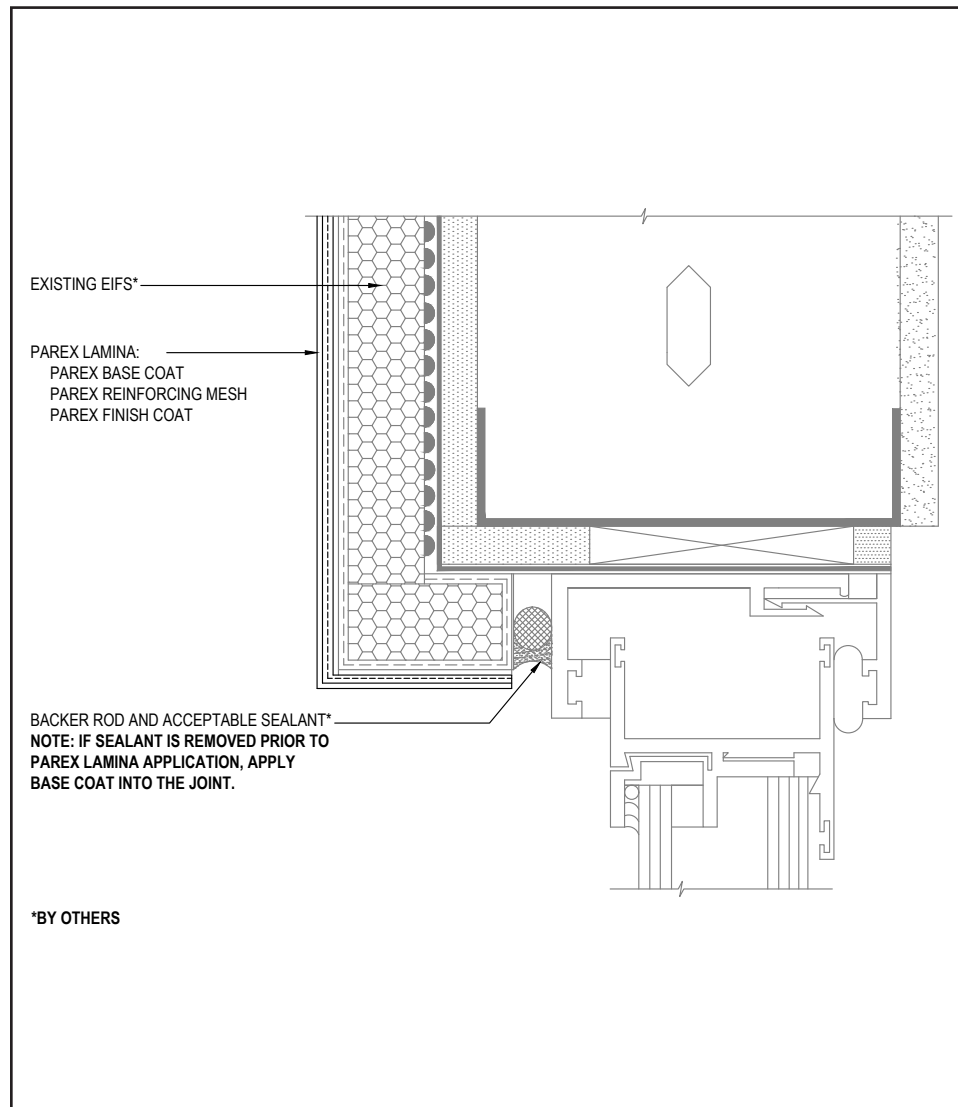
(\*NOTE: BY OTHERS)

The details within are the latest recommendations and are represented in good faith by Sika Corporation US (hereinafter Sika). The details are subject to change without notice. Sika accepts no liability for the end use of the details. For conditions not shown, consult Sika for review of specific details.

- Install Sika materials in accordance with current installation instructions.
- Unsatisfactory conditions shall be reported to the General Contractor and corrected before the application of Sika products.

## Parex EIFS Resurfacing System

### TYPICAL WINDOW JAMB (RECESSED)



- Do not apply finish to areas that will receive sealant.
- If sealant is removed prior to Parex Lamina application, apply base coat into the joint.
- Use Sikaflex HY 100 Sikaflex HY 150 with Sikaflex Primer 173 or other acceptable sealants. Reference *Acceptable Sealants for use with Parex Wall Systems* Technical Bulletin for a list of sealants.

06A 0525

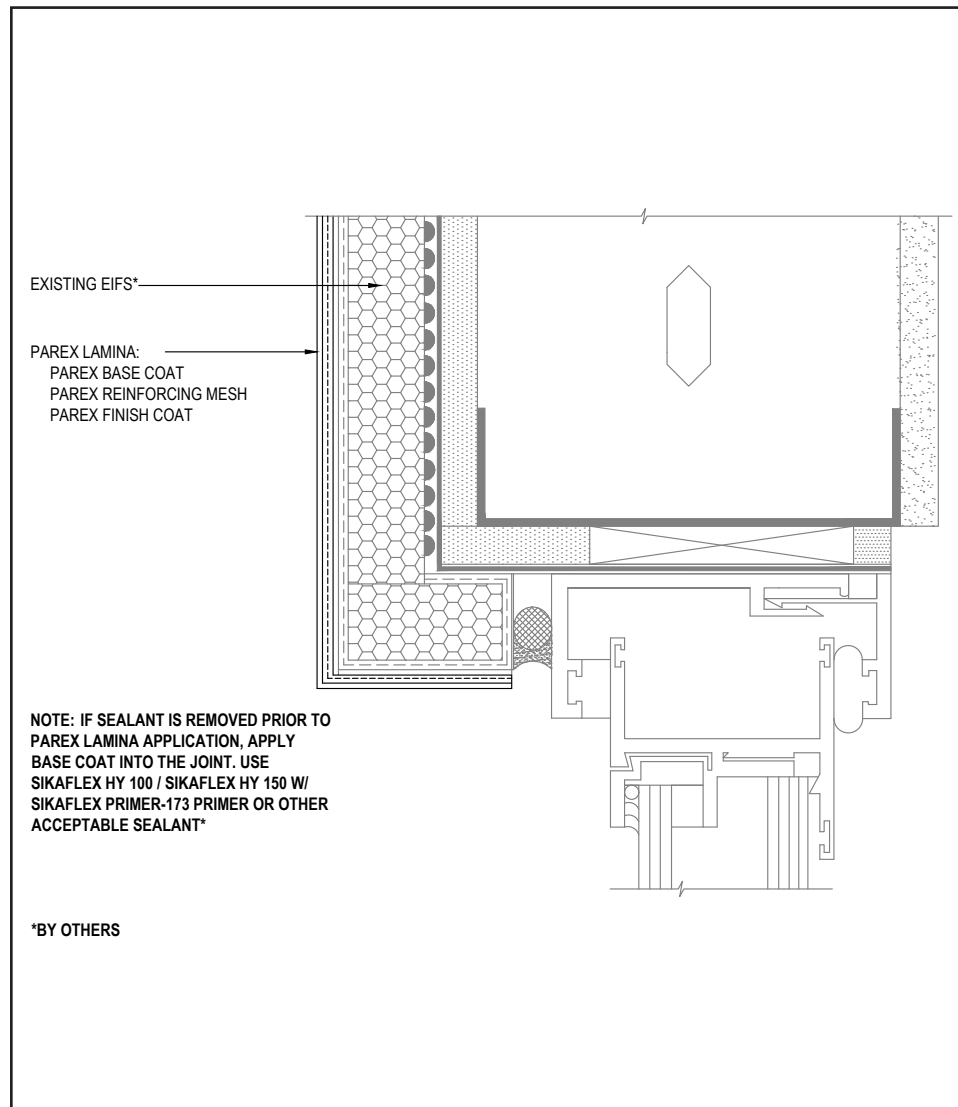
(\*NOTE: BY OTHERS)

The details within are the latest recommendations and are represented in good faith by Sika Corporation US (hereinafter Sika). The details are subject to change without notice. Sika accepts no liability for the end use of the details. For conditions not shown, consult Sika for review of specific details.

- Install Sika materials in accordance with current installation instructions.
- Unsatisfactory conditions shall be reported to the General Contractor and corrected before the application of Sika products.

## Parex EIFS Resurfacing System

### TYPICAL WINDOW JAMB (RECESSED)



- Do not apply finish to areas that will receive sealant.
- If sealant is removed prior to Parex Lamina application, apply base coat into the joint.
- Use Sikaflex HY 100 Sikaflex HY 150 with Sikaflex Primer 173 or other acceptable sealants. Reference *Acceptable Sealants for use with Parex Wall Systems* Technical Bulletin for a list of sealants.

06B 0525

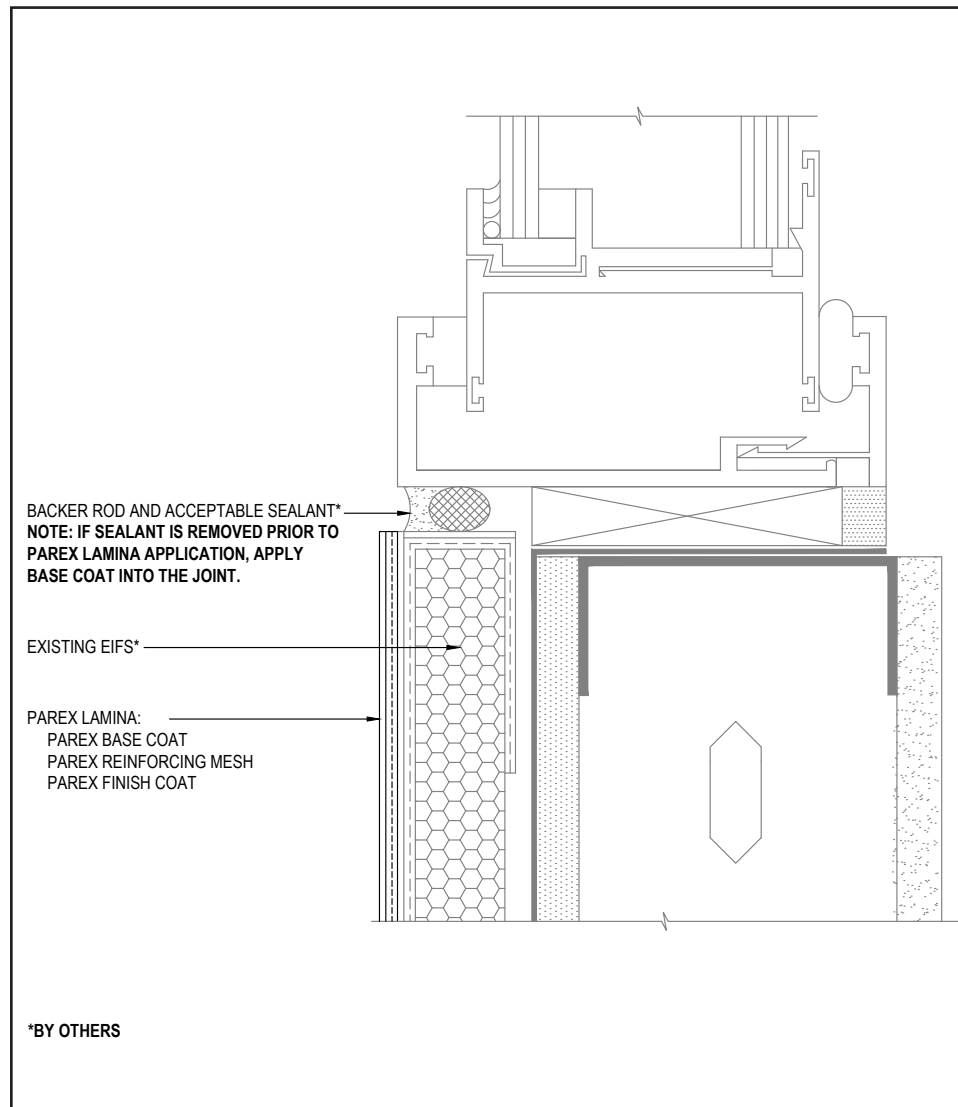
(\*NOTE: BY OTHERS)

The details within are the latest recommendations and are represented in good faith by Sika Corporation US (hereinafter Sika). The details are subject to change without notice. Sika accepts no liability for the end use of the details. For conditions not shown, consult Sika for review of specific details.

- Install Sika materials in accordance with current installation instructions.
- Unsatisfactory conditions shall be reported to the General Contractor and corrected before the application of Sika products.

# Parex EIFS Resurfacing System

## TYPICAL WINDOW SILL (FLUSH)



- Do not apply finish to areas that will receive sealant.
- If sealant is removed prior to Parex Lamina application, apply base coat into the joint.
- Use Sikaflex HY 100 Sikaflex HY 150 with Sikaflex Primer 173 or other acceptable sealants. Reference *Acceptable Sealants for use with Parex Wall Systems* Technical Bulletin for a list of sealants.

07A 0525

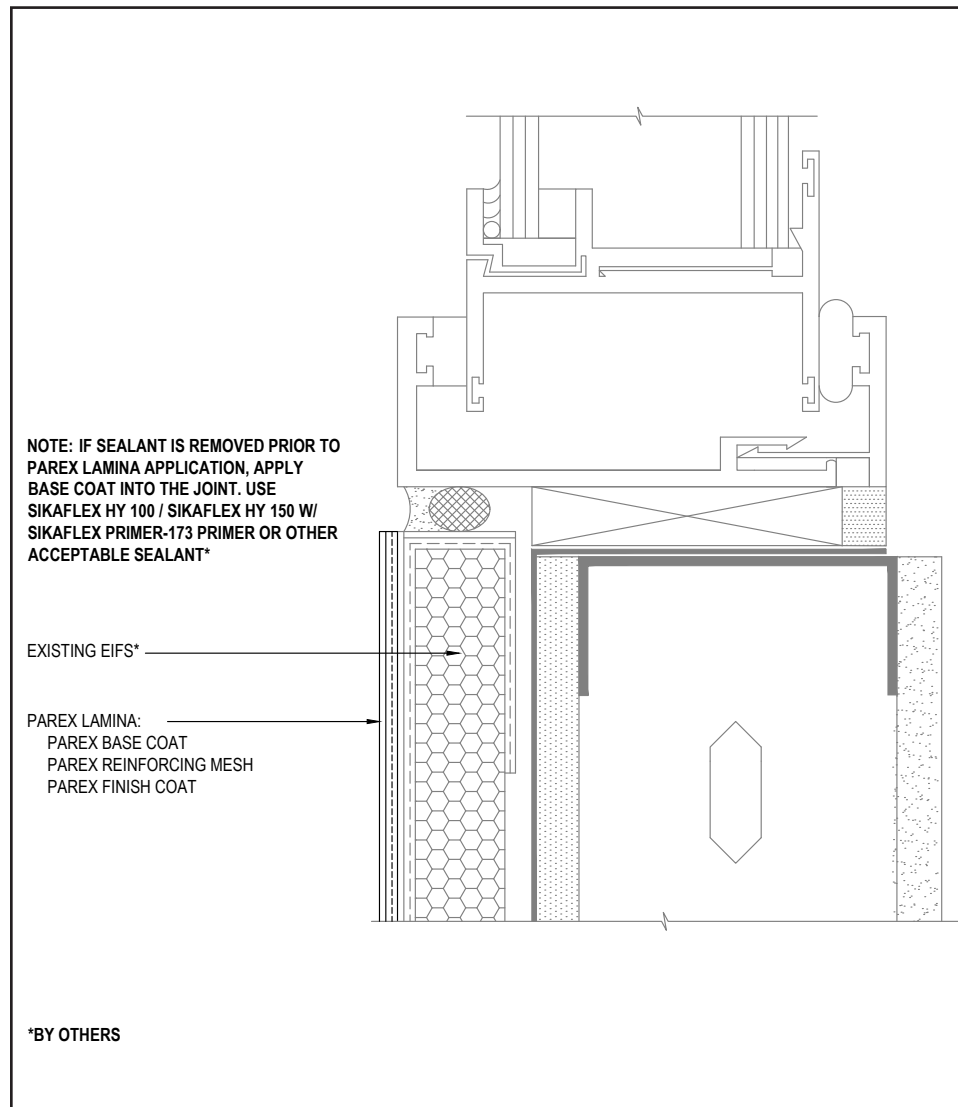
(\*NOTE: BY OTHERS)

The details within are the latest recommendations and are represented in good faith by Sika Corporation US (hereinafter Sika). The details are subject to change without notice. Sika accepts no liability for the end use of the details. For conditions not shown, consult Sika for review of specific details.

- Install Sika materials in accordance with current installation instructions.
- Unsatisfactory conditions shall be reported to the General Contractor and corrected before the application of Sika products.

## Parex EIFS Resurfacing System

### TYPICAL WINDOW SILL (FLUSH)



- Do not apply finish to areas that will receive sealant.
- If sealant is removed prior to Parex Lamina application, apply base coat into the joint.
- Use Sikaflex HY 100 Sikaflex HY 150 with Sikaflex Primer 173 or other acceptable sealants. Reference *Acceptable Sealants for use with Parex Wall Systems* Technical Bulletin for a list of sealants.

07B 0525

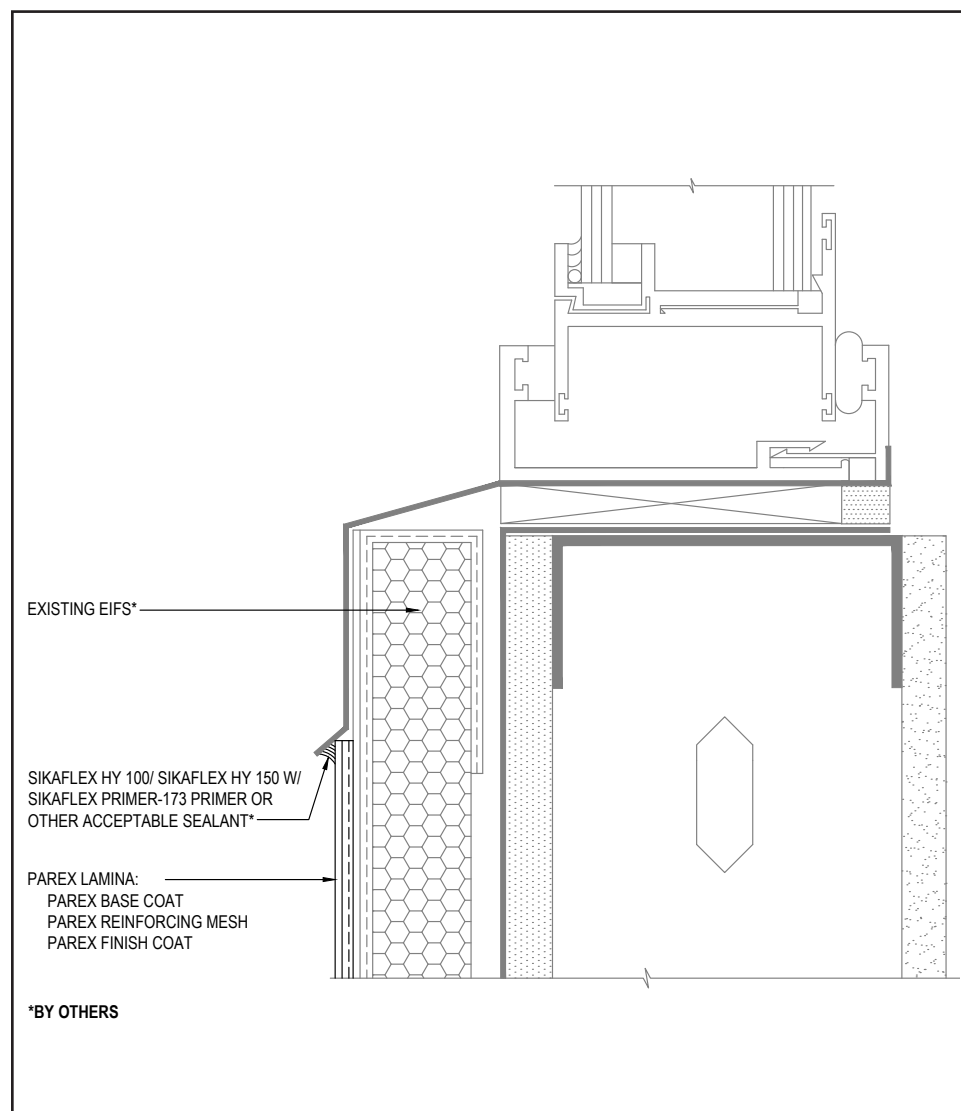
(\*NOTE: BY OTHERS)

The details within are the latest recommendations and are represented in good faith by Sika Corporation US (hereinafter Sika). The details are subject to change without notice. Sika accepts no liability for the end use of the details. For conditions not shown, consult Sika for review of specific details.

- Install Sika materials in accordance with current installation instructions.
- Unsatisfactory conditions shall be reported to the General Contractor and corrected before the application of Sika products.

## Parex EIFS Resurfacing System

### TYPICAL WINDOW SILL (RECESSED)



- Seal flashing with Sikaflex HY 100 Sikaflex HY 150 with Sikaflex Primer 173 or other acceptable sealants. Reference *Acceptable Sealants for use with Parex Wall Systems* Technical Bulletin for a list of sealants.

08 0525

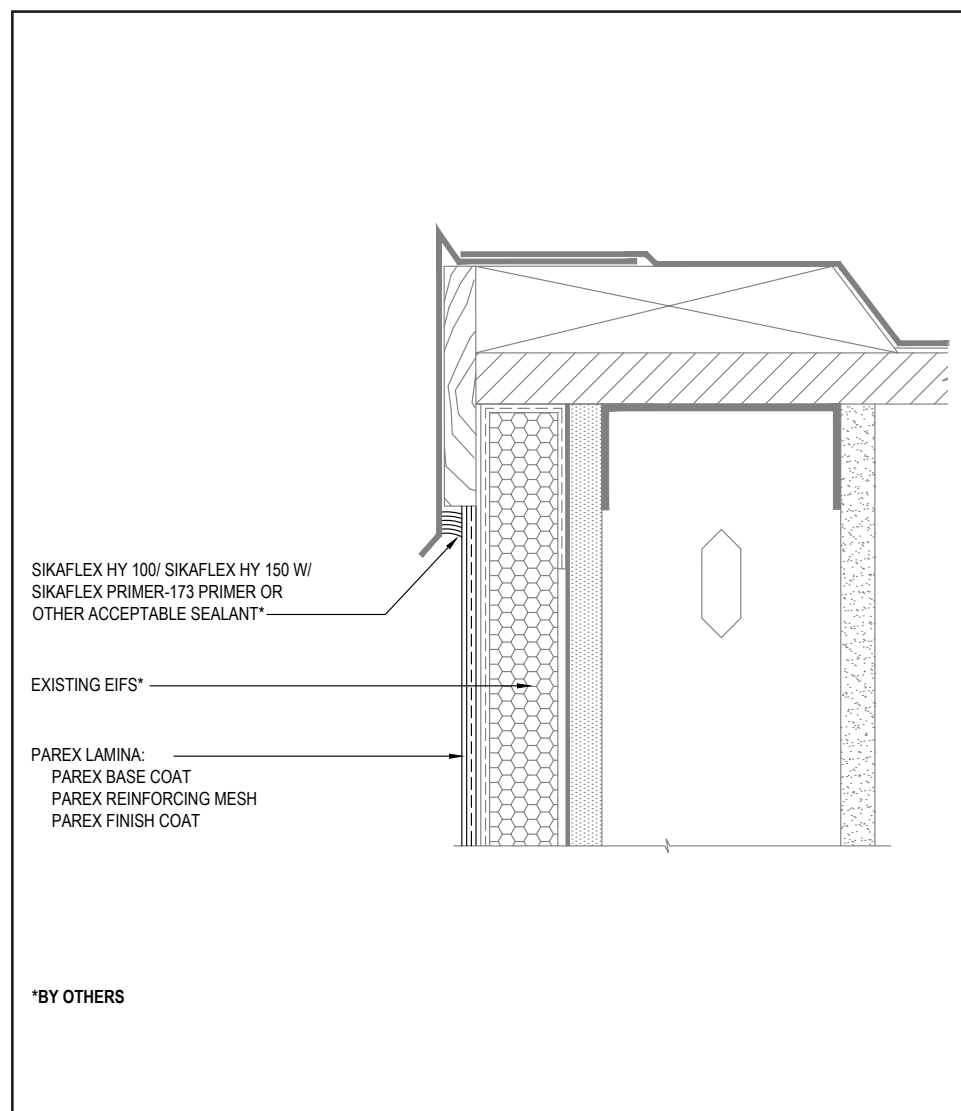
(\*NOTE: BY OTHERS)

The details within are the latest recommendations and are represented in good faith by Sika Corporation US (hereinafter Sika). The details are subject to change without notice. Sika accepts no liability for the end use of the details. For conditions not shown, consult Sika for review of specific details.

- Install Sika materials in accordance with current installation instructions.
- Unsatisfactory conditions shall be reported to the General Contractor and corrected before the application of Sika products.

# Parex EIFS Resurfacing System

## TYPICAL ROOF EDGE FLASHING



- Seal flashing with Sikaflex HY 100 Sikaflex HY 150 with Sikaflex Primer 173 or other acceptable sealants. Reference *Acceptable Sealants for use with Parex Wall Systems* Technical Bulletin for a list of sealants.

09 0525

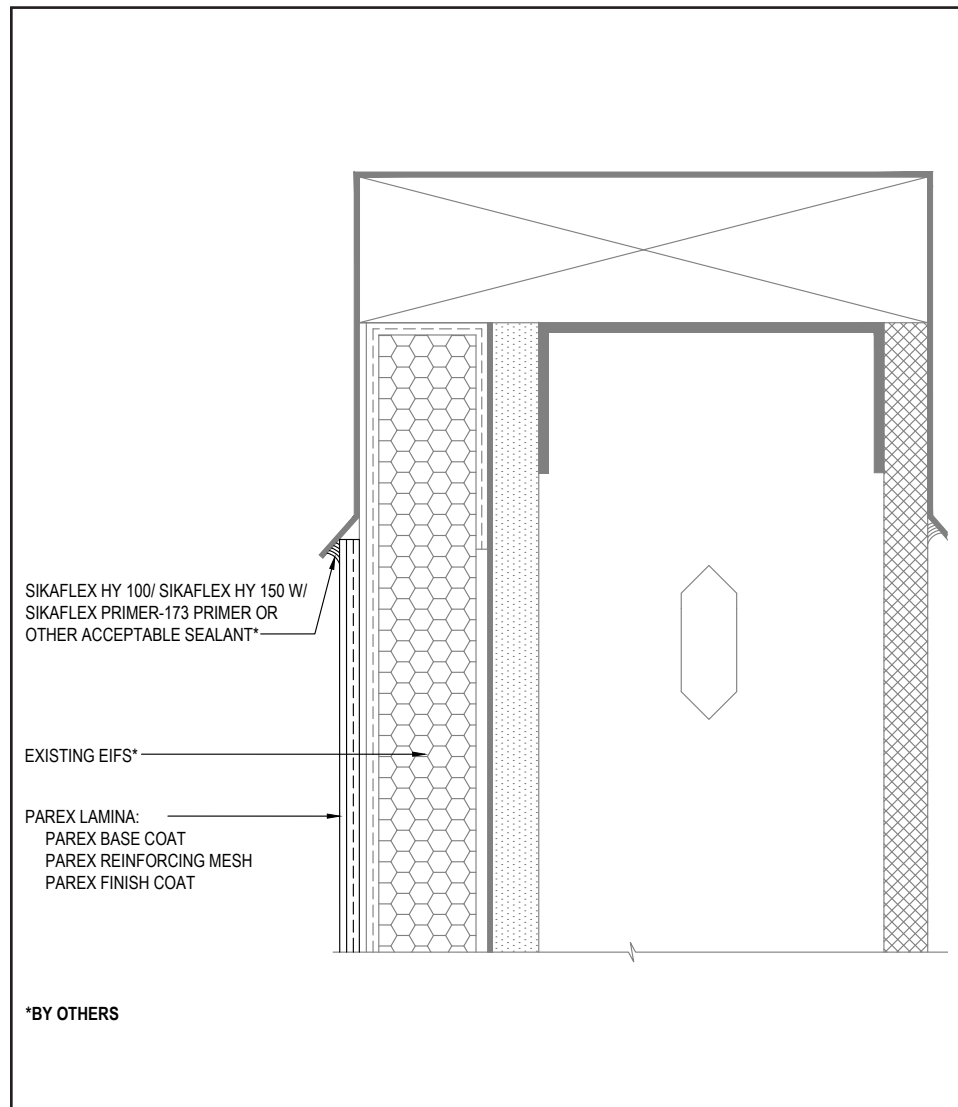
(\*NOTE: BY OTHERS)

The details within are the latest recommendations and are represented in good faith by Sika Corporation US (hereinafter Sika). The details are subject to change without notice. Sika accepts no liability for the end use of the details. For conditions not shown, consult Sika for review of specific details.

- Install Sika materials in accordance with current installation instructions.
- Unsatisfactory conditions shall be reported to the General Contractor and corrected before the application of Sika products.

# Parex EIFS Resurfacing System

## TYPICAL METAL COPING



- Seal flashing with Sikaflex HY 100 Sikaflex HY 150 with Sikaflex Primer 173 or other acceptable sealants. Reference *Acceptable Sealants for use with Parex Wall Systems* Technical Bulletin for a list of sealants.

10 0525

(\*NOTE: BY OTHERS)

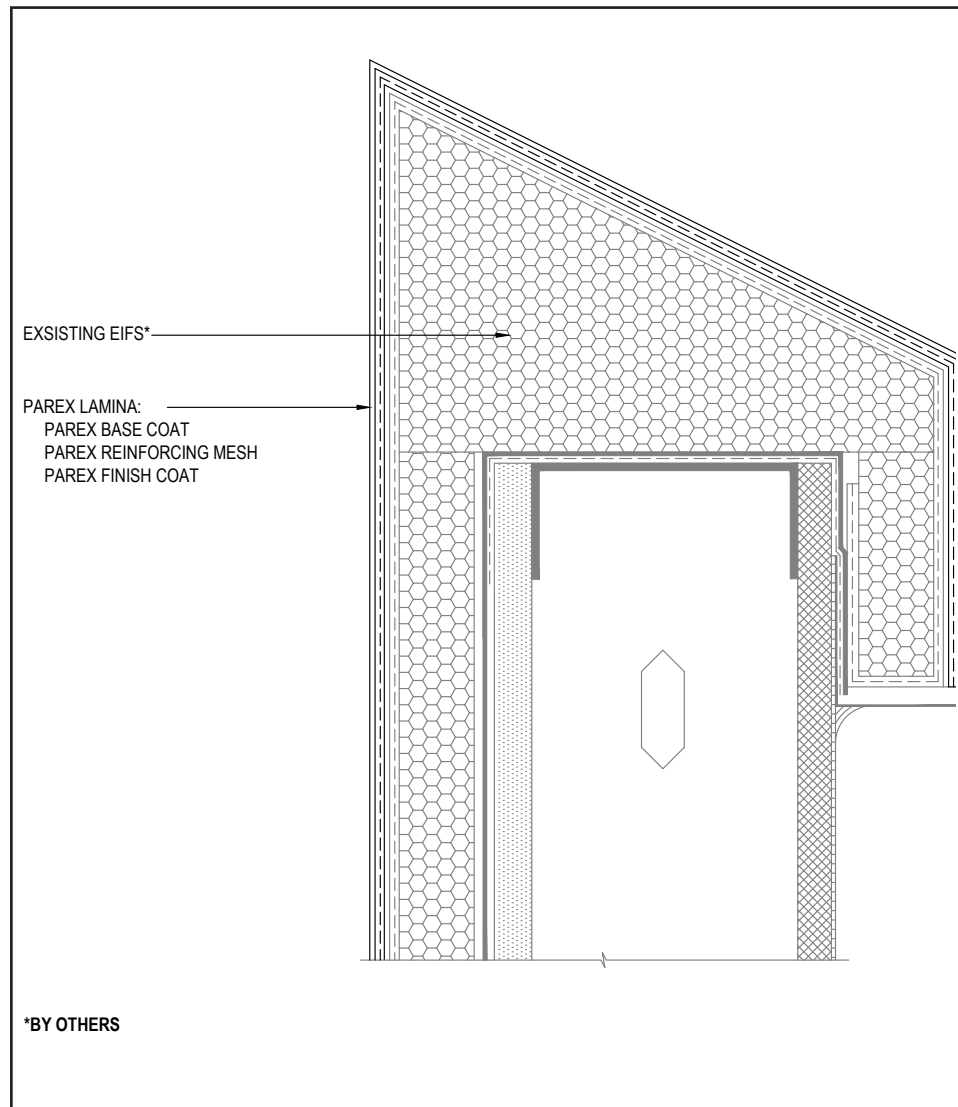
The details within are the latest recommendations and are represented in good faith by Sika Corporation US (hereinafter Sika). The details are subject to change without notice. Sika accepts no liability for the end use of the details. For conditions not shown, consult Sika for review of specific details.

- Install Sika materials in accordance with current installation instructions.
- Unsatisfactory conditions shall be reported to the General Contractor and corrected before the application of Sika products.



# Parex EIFS Resurfacing System

## TYPICAL EPS PARAPET CAP



- Do not apply Parex Lamina to flat horizontal surfaces. Provide a minimum 6:12 slope for all horizontal surfaces over 1".

11 0525

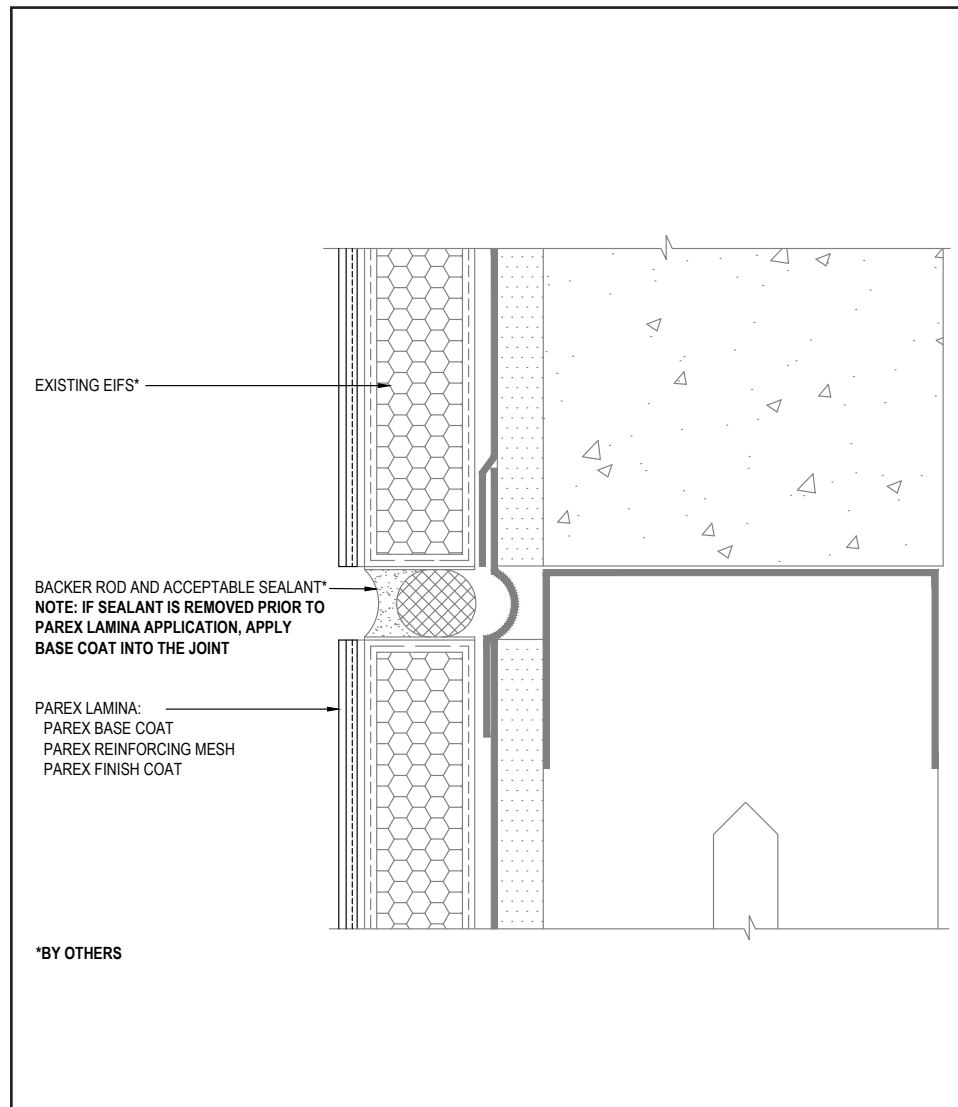
(\*NOTE: BY OTHERS)

The details within are the latest recommendations and are represented in good faith by Sika Corporation US (hereinafter Sika). The details are subject to change without notice. Sika accepts no liability for the end use of the details. For conditions not shown, consult Sika for review of specific details.

- Install Sika materials in accordance with current installation instructions.
- Unsatisfactory conditions shall be reported to the General Contractor and corrected before the application of Sika products.

# Parex EIFS Resurfacing System

## TYPICAL EXPANSION JOINT AT FLOOR LINE



- Do not apply finish to areas that will receive sealant.
- If sealant is removed prior to Parex Lamina application, apply base coat into the joint.
- Use Sikaflex HY 100 Sikaflex HY 150 with Sikaflex Primer 173 or other acceptable sealants. Reference *Acceptable Sealants for use with Parex Wall Systems* Technical Bulletin for a list of sealants.

12A 0525

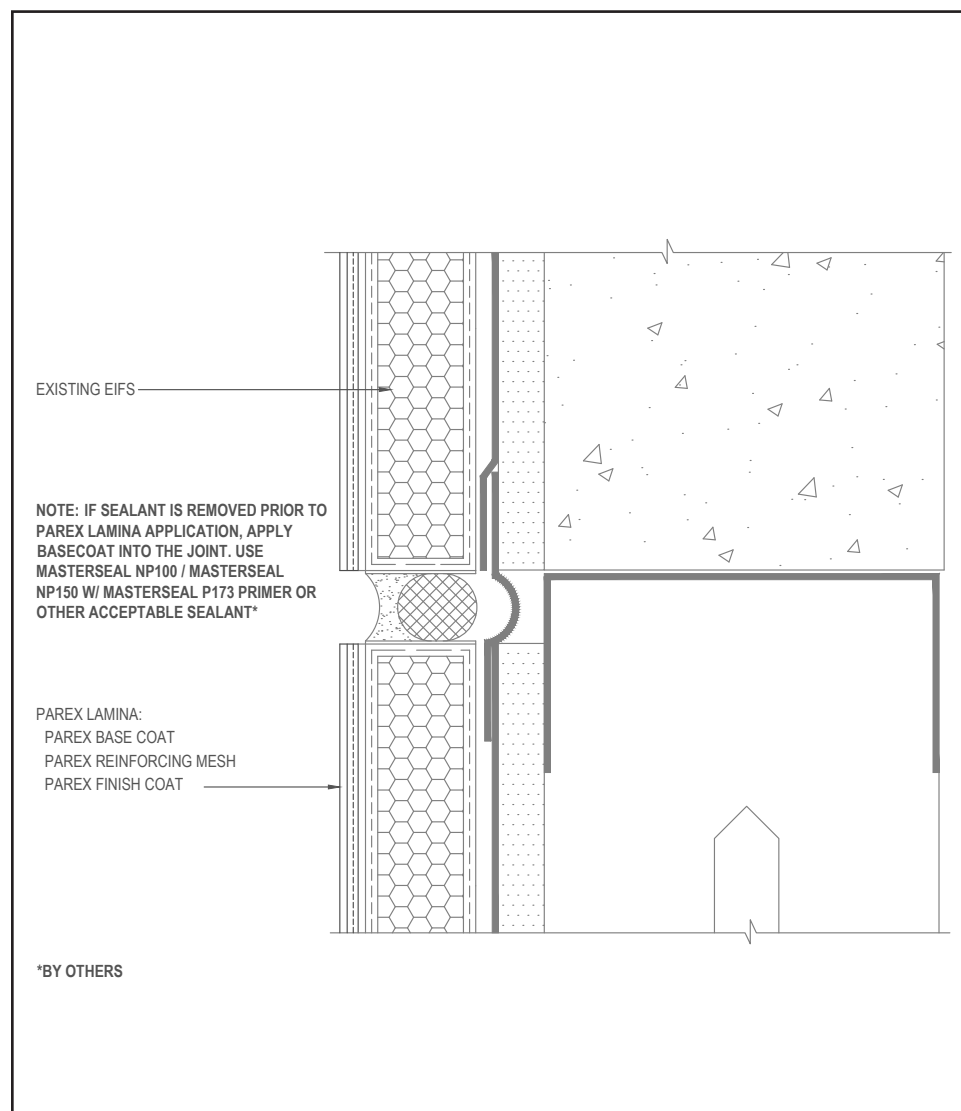
(\*NOTE: BY OTHERS)

The details within are the latest recommendations and are represented in good faith by Sika Corporation US (hereinafter Sika). The details are subject to change without notice. Sika accepts no liability for the end use of the details. For conditions not shown, consult Sika for review of specific details.

- Install Sika materials in accordance with current installation instructions.
- Unsatisfactory conditions shall be reported to the General Contractor and corrected before the application of Sika products.

## Parex EIFS Resurfacing System

### TYPICAL EXPANSION JOINT AT FLOOR LINE



- Do not apply finish to areas that will receive sealant.
- If sealant is removed prior to Parex Lamina application, apply base coat into the joint.
- Use Sikaflex HY 100 Sikaflex HY 150 with Sikaflex Primer 173 or other acceptable sealants. Reference *Acceptable Sealants for use with Parex Wall Systems* Technical Bulletin for a list of sealants.

12B 0525

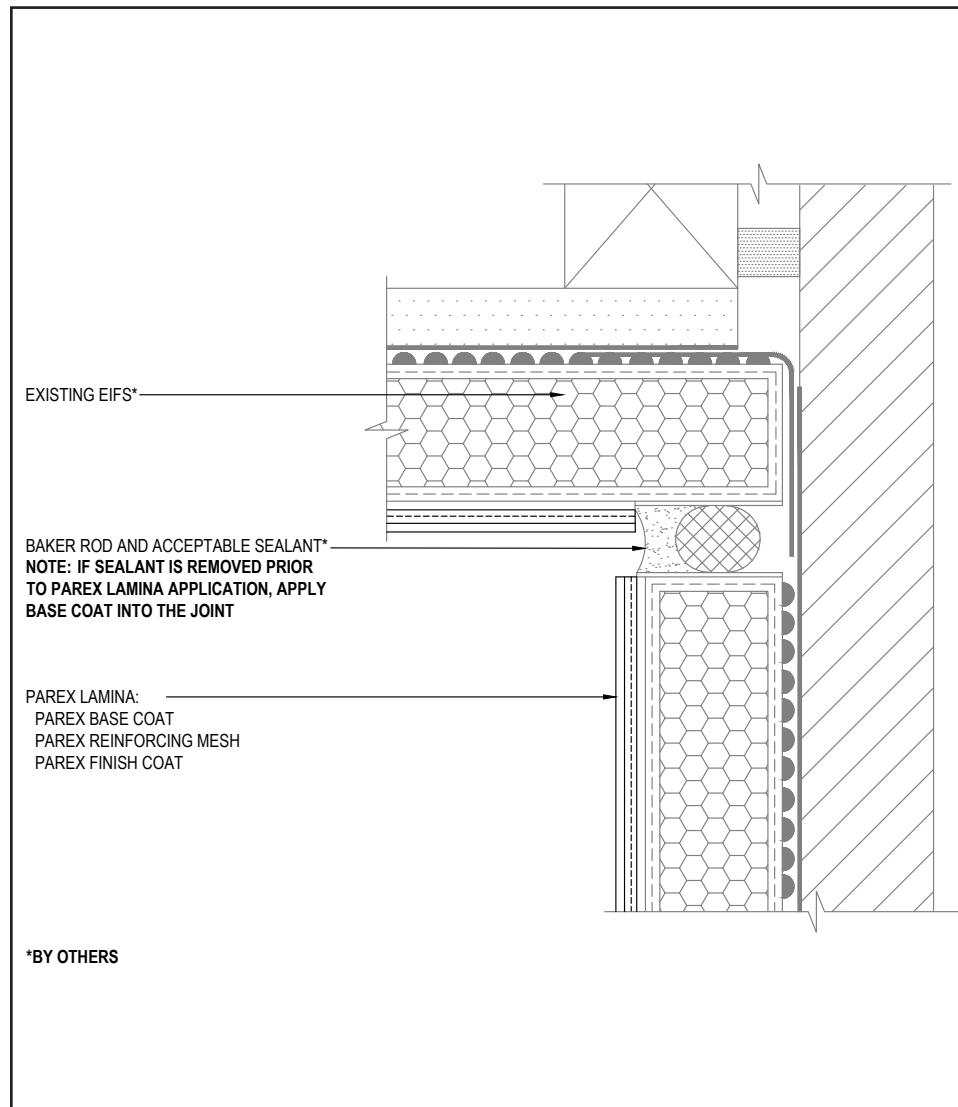
(\*NOTE: BY OTHERS)

The details within are the latest recommendations and are represented in good faith by Sika Corporation US (hereinafter Sika). The details are subject to change without notice. Sika accepts no liability for the end use of the details. For conditions not shown, consult Sika for review of specific details.

- Install Sika materials in accordance with current installation instructions.
- Unsatisfactory conditions shall be reported to the General Contractor and corrected before the application of Sika products.

# Parex EIFS Resurfacing System

## TYPICAL EXPANSION JOINT AT CHANGE IN SUBSTRATE



- Do not apply finish to areas that will receive sealant.
- If sealant is removed prior to Parex Lamina application, apply base coat into the joint.
- Use Sikaflex HY 100 Sikaflex HY 150 with Sikaflex Primer 173 or other acceptable sealants. Reference *Acceptable Sealants for use with Parex Wall Systems* Technical Bulletin for a list of sealants.

13A 0525

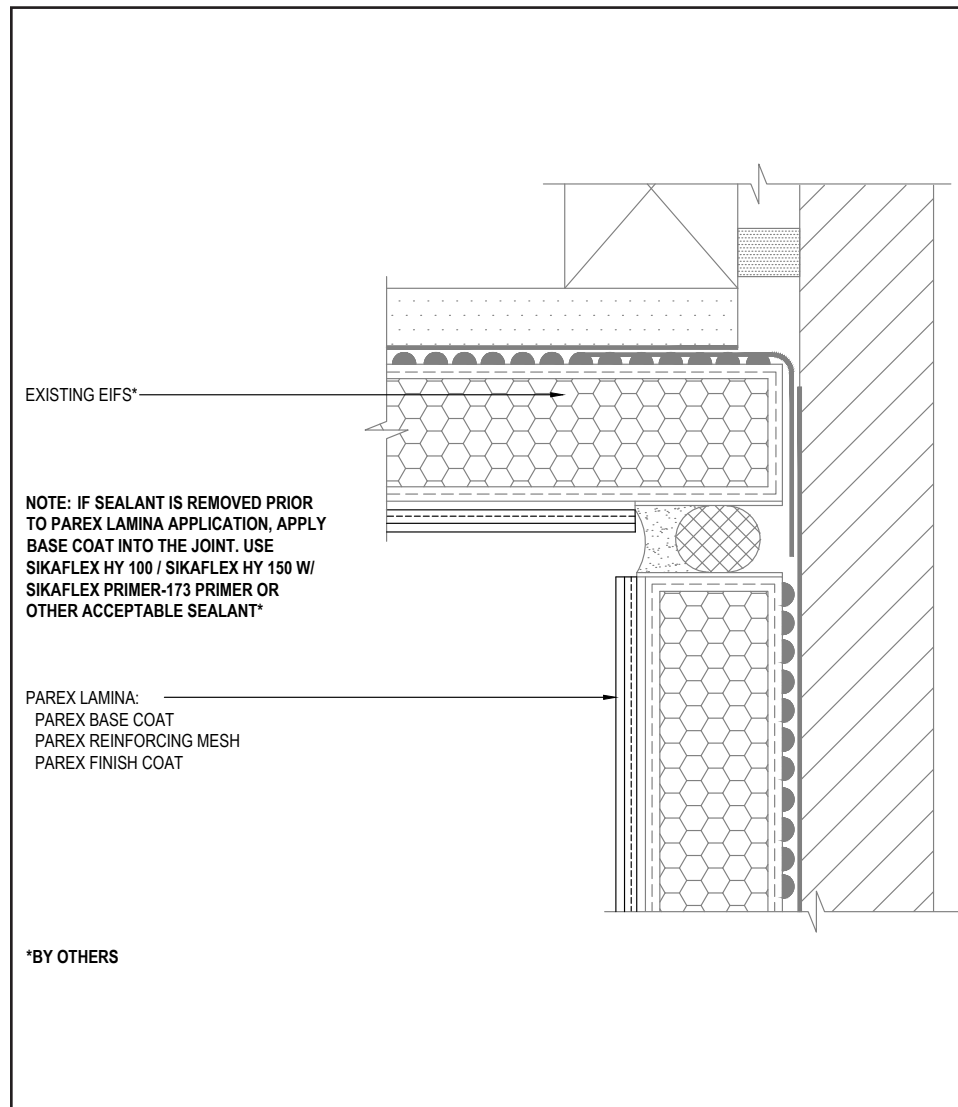
(\*NOTE: BY OTHERS)

The details within are the latest recommendations and are represented in good faith by Sika Corporation US (hereinafter Sika). The details are subject to change without notice. Sika accepts no liability for the end use of the details. For conditions not shown, consult Sika for review of specific details.

- Install Sika materials in accordance with current installation instructions.
- Unsatisfactory conditions shall be reported to the General Contractor and corrected before the application of Sika products.

# Parex EIFS Resurfacing System

## TYPICAL EXPANSION JOINT AT CHANGE IN SUBSTRATE



- Do not apply finish to areas that will receive sealant.
- If sealant is removed prior to Parex Lamina application, apply base coat into the joint.
- Use Sikaflex HY 100 Sikaflex HY 150 with Sikaflex Primer 173 or other acceptable sealants. Reference *Acceptable Sealants for use with Parex Wall Systems* Technical Bulletin for a list of sealants.

13B 0525

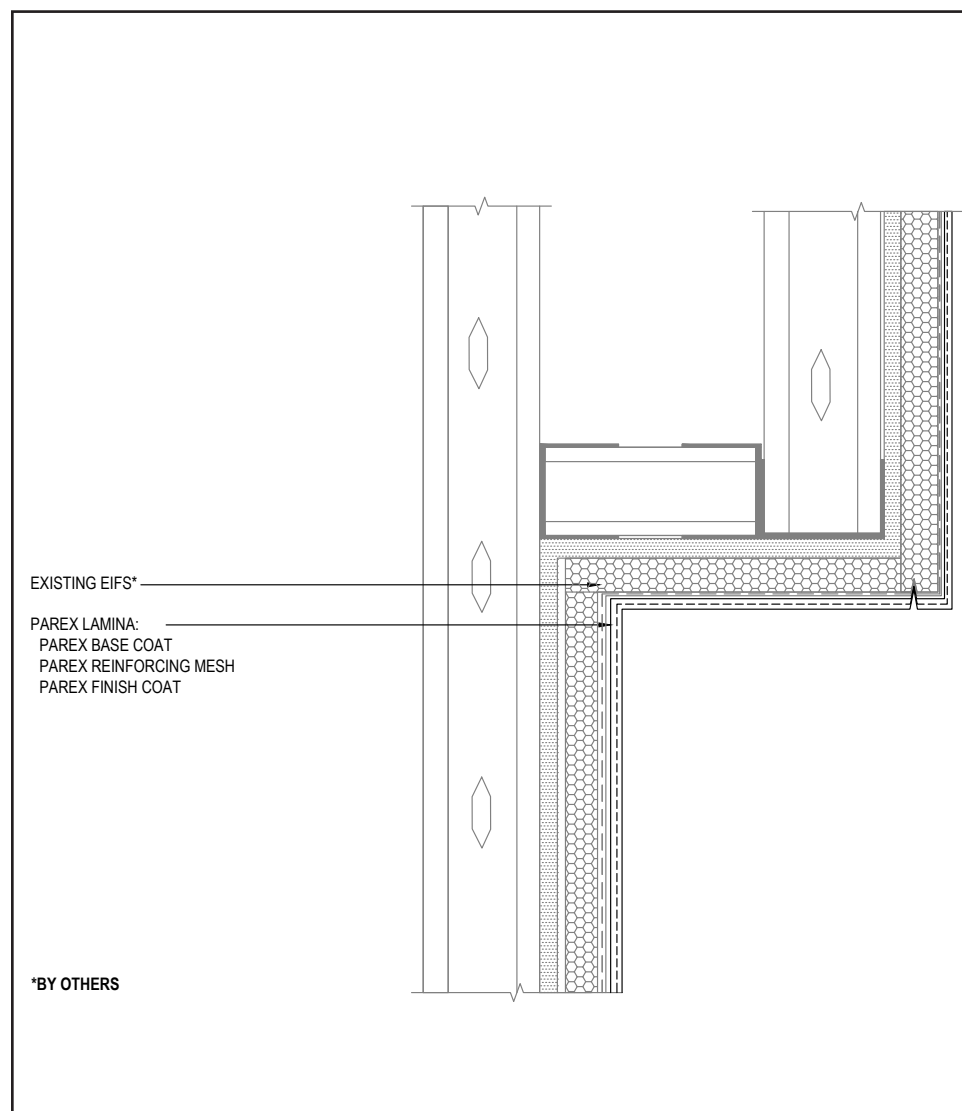
(\*NOTE: BY OTHERS)

The details within are the latest recommendations and are represented in good faith by Sika Corporation US (hereinafter Sika). The details are subject to change without notice. Sika accepts no liability for the end use of the details. For conditions not shown, consult Sika for review of specific details.

- Install Sika materials in accordance with current installation instructions.
- Unsatisfactory conditions shall be reported to the General Contractor and corrected before the application of Sika products.

# Parex EIFS Resurfacing System

## TYPICAL SECTION AT FASCIA - SOFFIT



14 0525

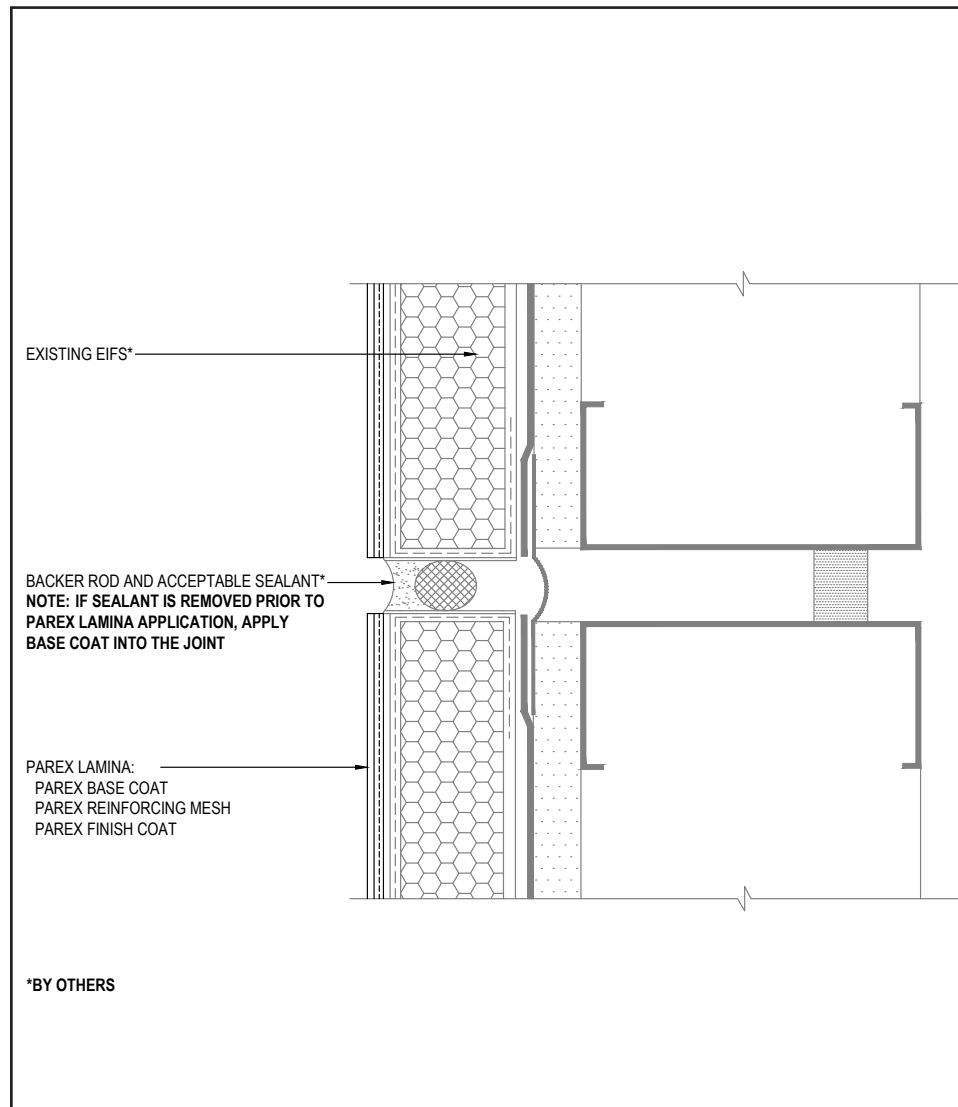
(\*NOTE: BY OTHERS)

The details within are the latest recommendations and are represented in good faith by Sika Corporation US (hereinafter Sika). The details are subject to change without notice. Sika accepts no liability for the end use of the details. For conditions not shown, consult Sika for review of specific details.

- Install Sika materials in accordance with current installation instructions.
- Unsatisfactory conditions shall be reported to the General Contractor and corrected before the application of Sika products.

# Parex EIFS Resurfacing System

## TYPICAL VERTICAL EXPANSION JOINT



- Do not apply finish to areas that will receive sealant.
- If sealant is removed prior to Parex Lamina application, apply base coat into the joint.
- Use Sikaflex HY 100 Sikaflex HY 150 with Sikaflex Primer 173 or other acceptable sealants. Reference *Acceptable Sealants for use with Parex Wall Systems* Technical Bulletin for a list of sealants.

15A 0525

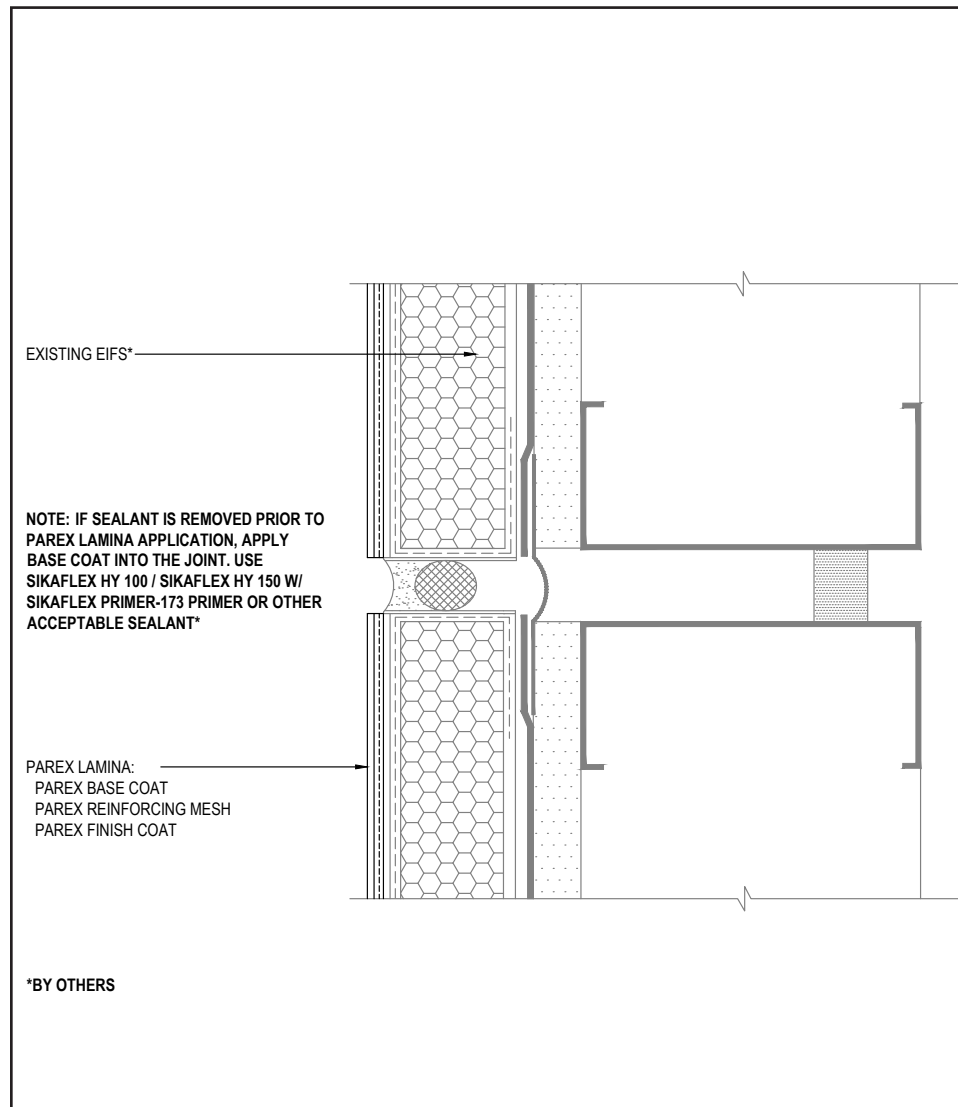
(\*NOTE: BY OTHERS)

The details within are the latest recommendations and are represented in good faith by Sika Corporation US (hereinafter Sika). The details are subject to change without notice. Sika accepts no liability for the end use of the details. For conditions not shown, consult Sika for review of specific details.

- Install Sika materials in accordance with current installation instructions.
- Unsatisfactory conditions shall be reported to the General Contractor and corrected before the application of Sika products.

## Parex EIFS Resurfacing System

### TYPICAL EXPANSION JOINT DETAIL



- Do not apply finish to areas that will receive sealant.
- If sealant is removed prior to Parex Lamina application, apply base coat into the joint.
- Use Sikaflex HY 100 Sikaflex HY 150 with Sikaflex Primer 173 or other acceptable sealants. Reference *Acceptable Sealants for use with Parex Wall Systems* Technical Bulletin for a list of sealants.

15B 0525

(\*NOTE: BY OTHERS)

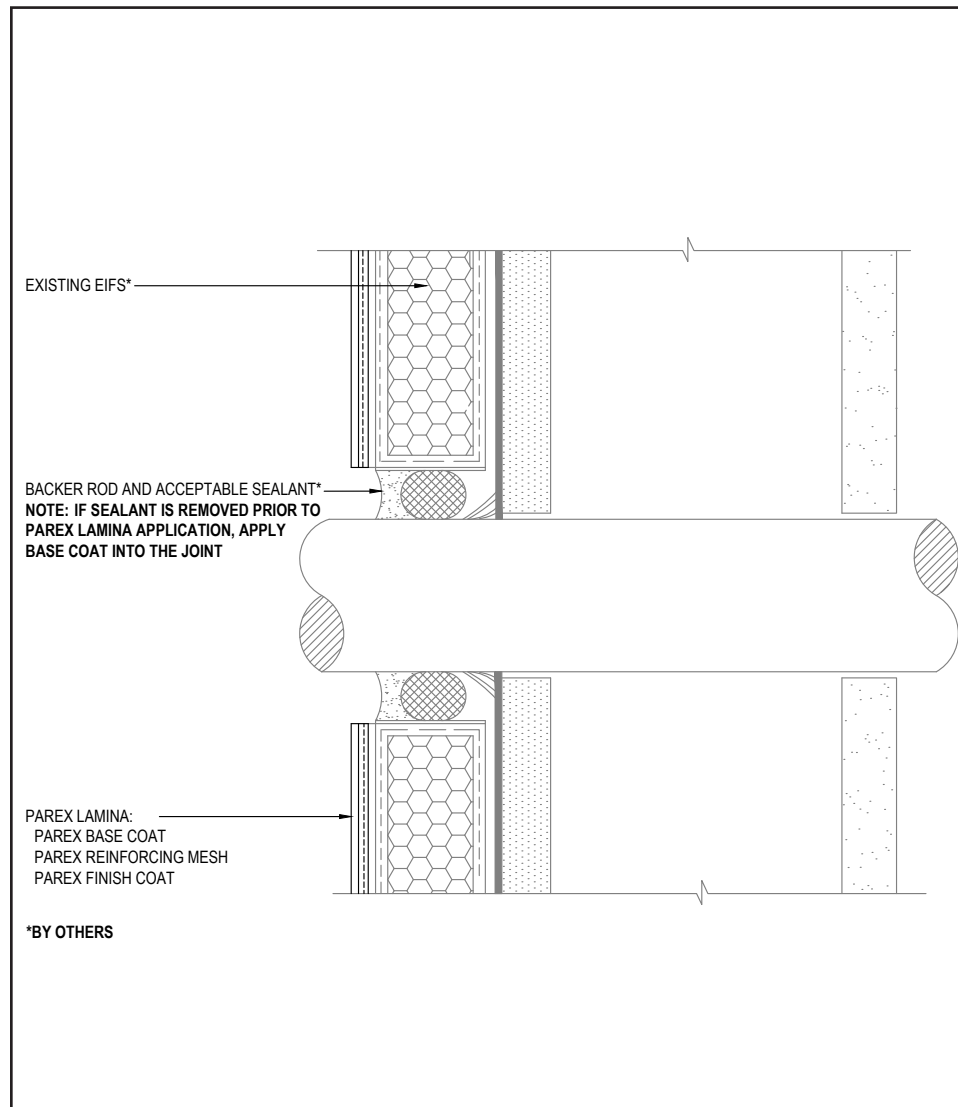
The details within are the latest recommendations and are represented in good faith by Sika Corporation US (hereinafter Sika). The details are subject to change without notice. Sika accepts no liability for the end use of the details. For conditions not shown, consult Sika for review of specific details.

- Install Sika materials in accordance with current installation instructions.
- Unsatisfactory conditions shall be reported to the General Contractor and corrected before the application of Sika products.



# Parex EIFS Resurfacing System

## TYPICAL PIPE PENETRATION



- Do not apply finish to areas that will receive sealant.
- If sealant is removed prior to Parex Lamina application, apply base coat into the joint.
- Use Sikaflex HY 100 Sikaflex HY 150 with Sikaflex Primer 173 or other acceptable sealants. Reference *Acceptable Sealants for use with Parex Wall Systems* Technical Bulletin for a list of sealants.

16A 0525

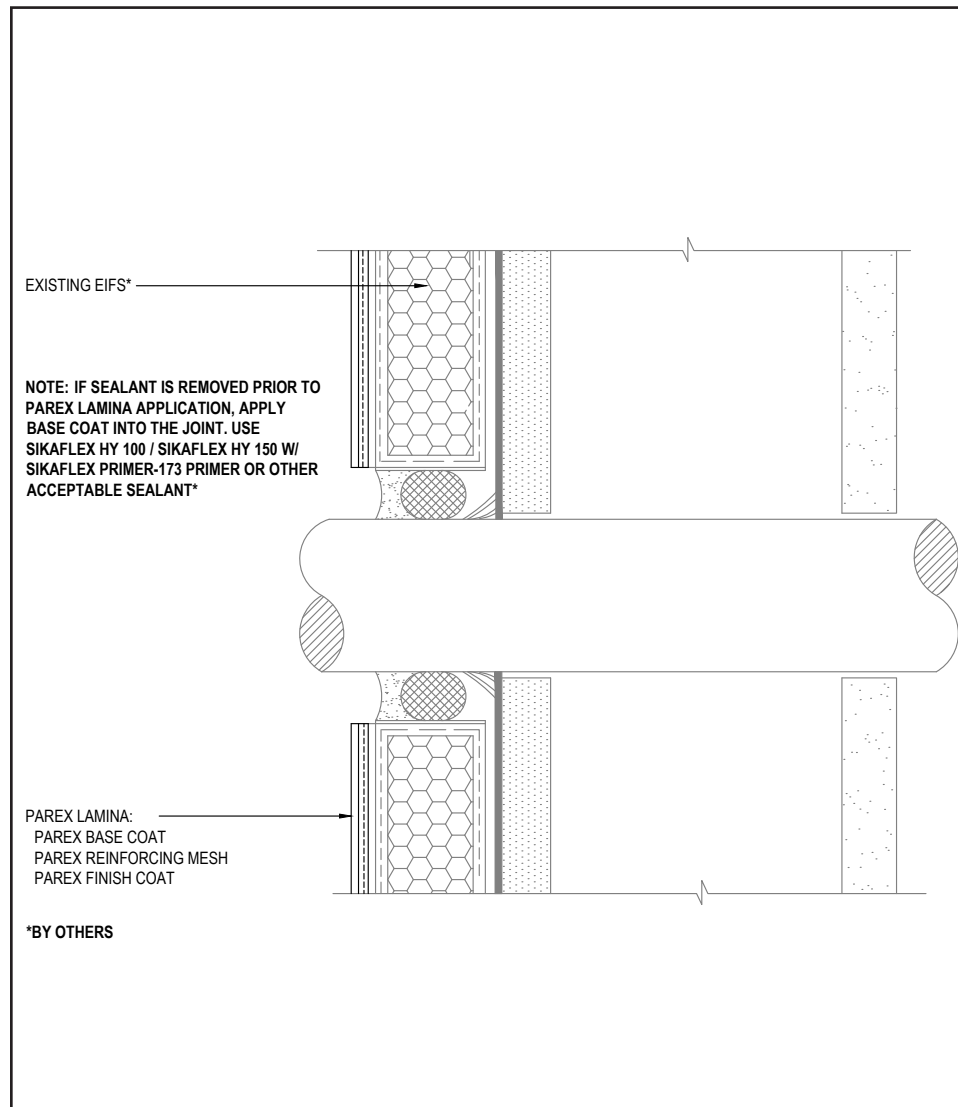
(\*NOTE: BY OTHERS)

The details within are the latest recommendations and are represented in good faith by Sika Corporation US (hereinafter Sika). The details are subject to change without notice. Sika accepts no liability for the end use of the details. For conditions not shown, consult Sika for review of specific details.

- Install Sika materials in accordance with current installation instructions.
- Unsatisfactory conditions shall be reported to the General Contractor and corrected before the application of Sika products.

## Parex EIFS Resurfacing System

### TYPICAL PIPE PENETRATION



- Do not apply finish to areas that will receive sealant.
- If sealant is removed prior to Parex Lamina application, apply base coat into the joint.
- Use Sikaflex HY 100 Sikaflex HY 150 with Sikaflex Primer 173 or other acceptable sealants. Reference *Acceptable Sealants for use with Parex Wall Systems* Technical Bulletin for a list of sealants.

16B 0525

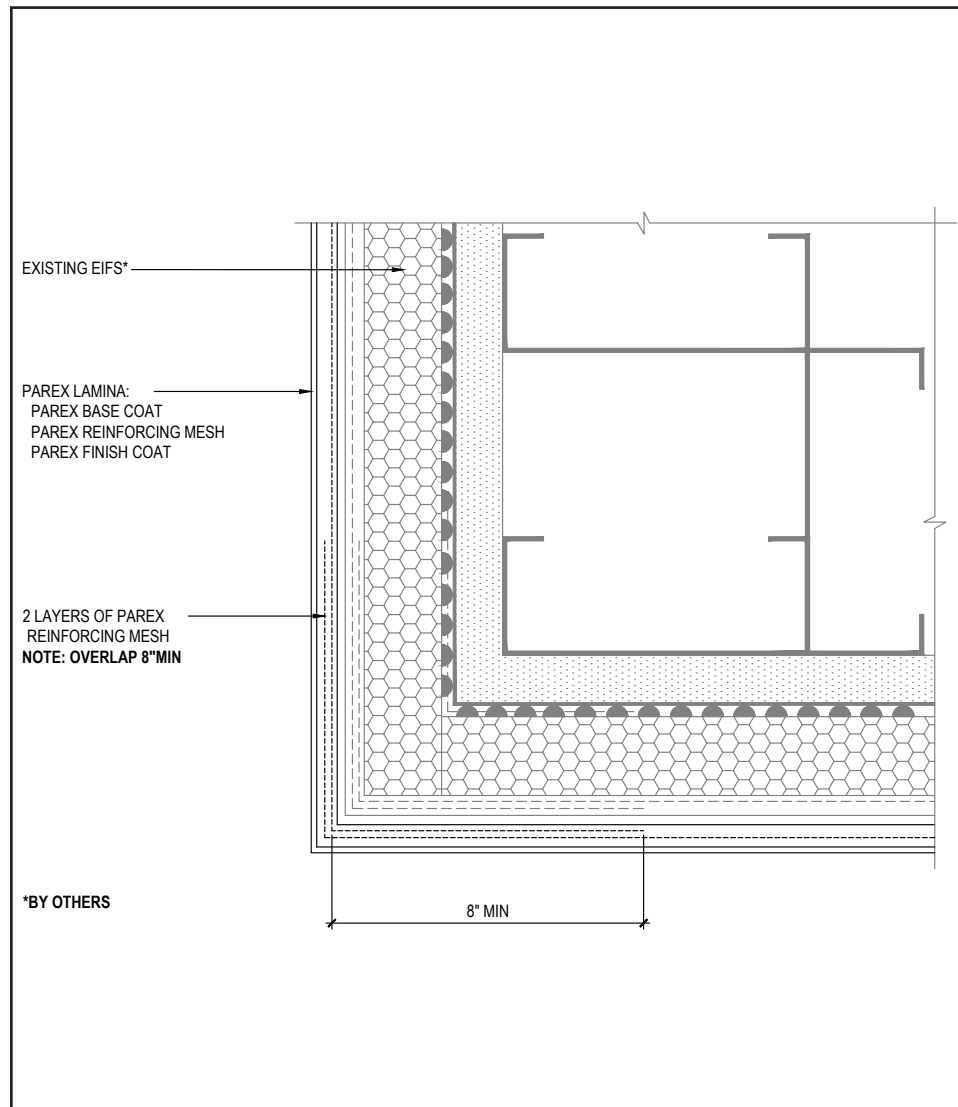
(\*NOTE: BY OTHERS)

The details within are the latest recommendations and are represented in good faith by Sika Corporation US (hereinafter Sika). The details are subject to change without notice. Sika accepts no liability for the end use of the details. For conditions not shown, consult Sika for review of specific details.

- Install Sika materials in accordance with current installation instructions.
- Unsatisfactory conditions shall be reported to the General Contractor and corrected before the application of Sika products.

# Parex EIFS Resurfacing System

## TYPICAL OUTSIDE CORNER



- Ensure Parex 355 Standard, SikaWall Intermediate 6 or SikaWall Intermediate 12 Reinforcing Mesh is lapped a minimum of 8" (203 mm) around corners from both sides (creating double layer of mesh at corner).

17 0525

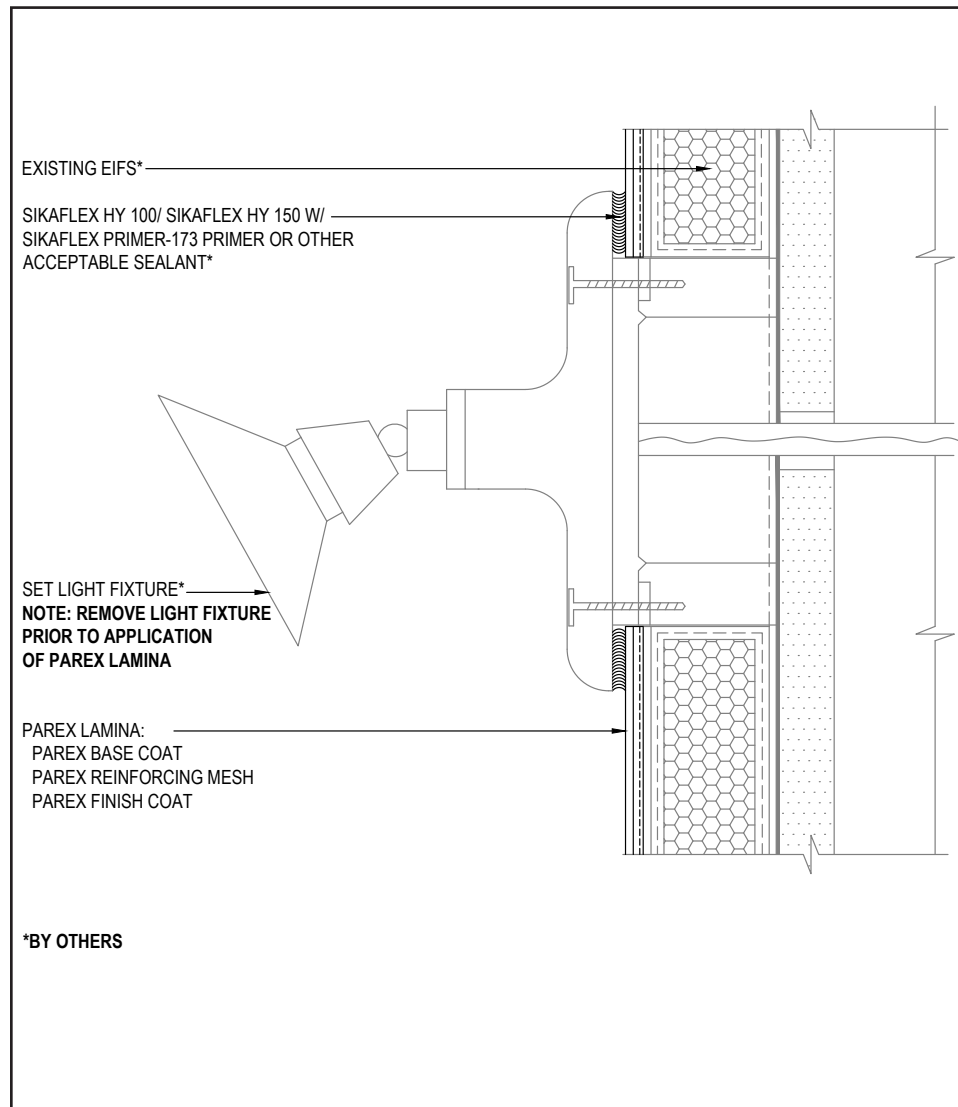
(\*NOTE: BY OTHERS)

The details within are the latest recommendations and are represented in good faith by Sika Corporation US (hereinafter Sika). The details are subject to change without notice. Sika accepts no liability for the end use of the details. For conditions not shown, consult Sika for review of specific details.

- Install Sika materials in accordance with current installation instructions.
- Unsatisfactory conditions shall be reported to the General Contractor and corrected before the application of Sika products.

# Parex EIFS Resurfacing System

## TYPICAL LIGHT FIXTURE



- Use Sikaflex HY 100 Sikaflex HY 150 with Sikaflex Primer 173 or other acceptable sealants. Reference *Acceptable Sealants for use with Parex Wall Systems* Technical Bulletin for a list of sealants.

18 0525

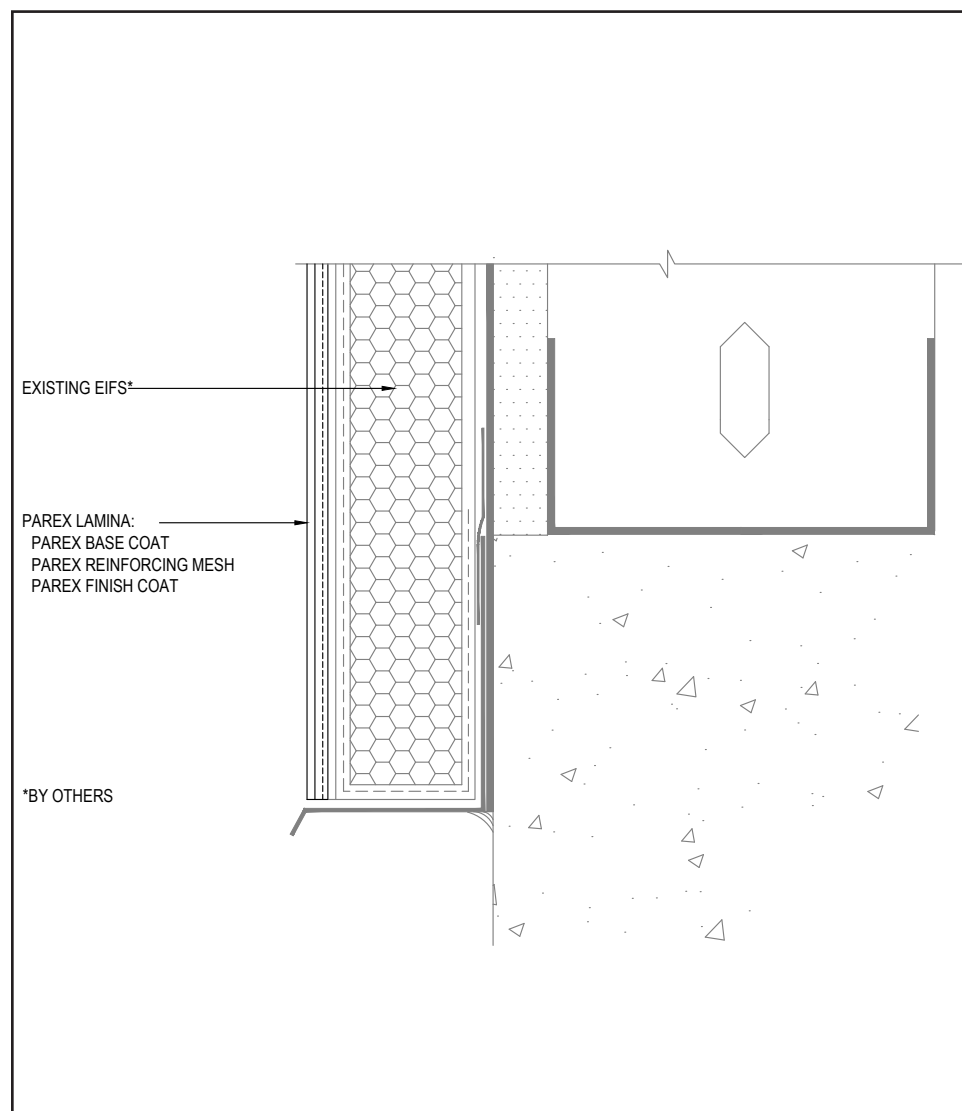
(\*NOTE: BY OTHERS)

The details within are the latest recommendations and are represented in good faith by Sika Corporation US (hereinafter Sika). The details are subject to change without notice. Sika accepts no liability for the end use of the details. For conditions not shown, consult Sika for review of specific details.

- Install Sika materials in accordance with current installation instructions.
- Unsatisfactory conditions shall be reported to the General Contractor and corrected before the application of Sika products.

# Parex EIFS Resurfacing System

## TYPICAL TERMINATION AT FOUNDATION



19 0525

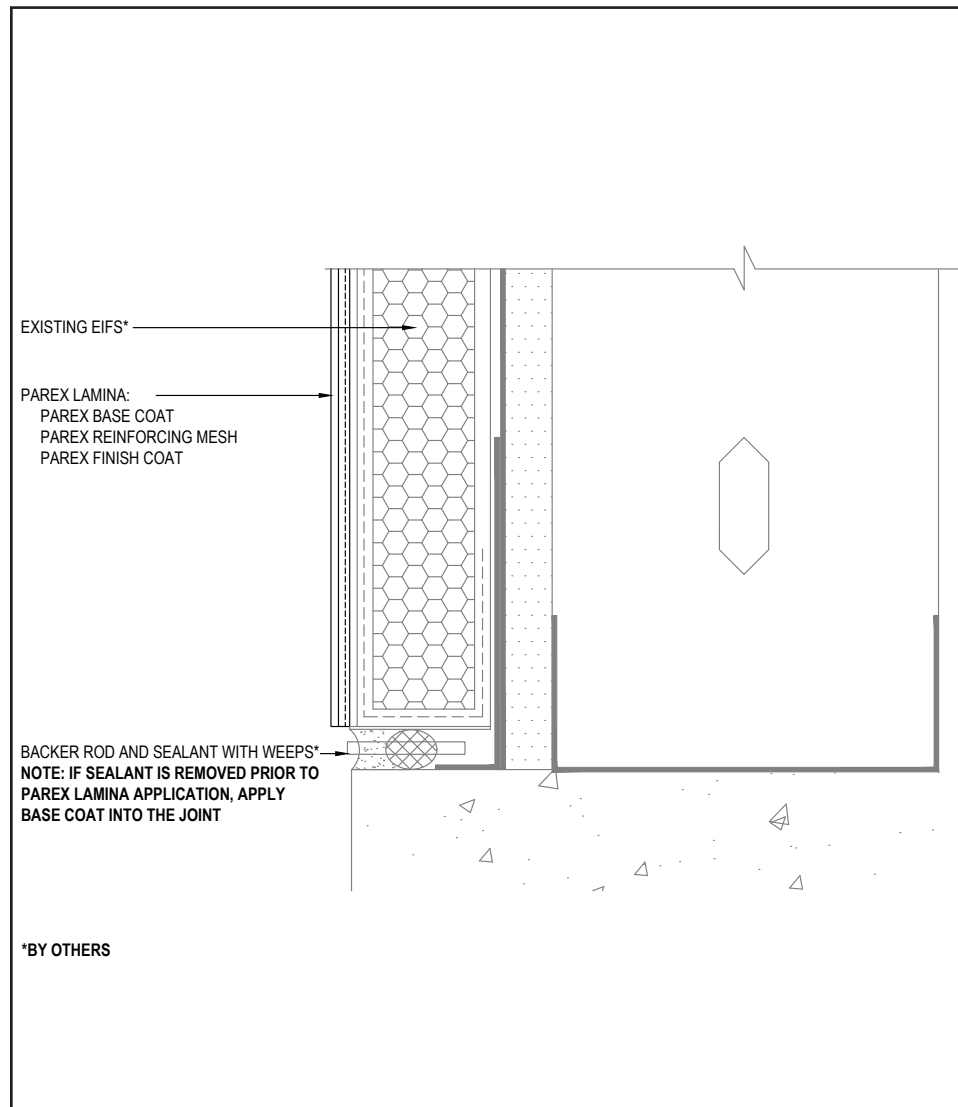
(\*NOTE: BY OTHERS)

The details within are the latest recommendations and are represented in good faith by Sika Corporation US (hereinafter Sika). The details are subject to change without notice. Sika accepts no liability for the end use of the details. For conditions not shown, consult Sika for review of specific details.

- Install Sika materials in accordance with current installation instructions.
- Unsatisfactory conditions shall be reported to the General Contractor and corrected before the application of Sika products.

# Parex EIFS Resurfacing System

## TYPICAL TERMINATION AT FOUNDATION (FLUSH)



20A 0525

(\*NOTE: BY OTHERS)

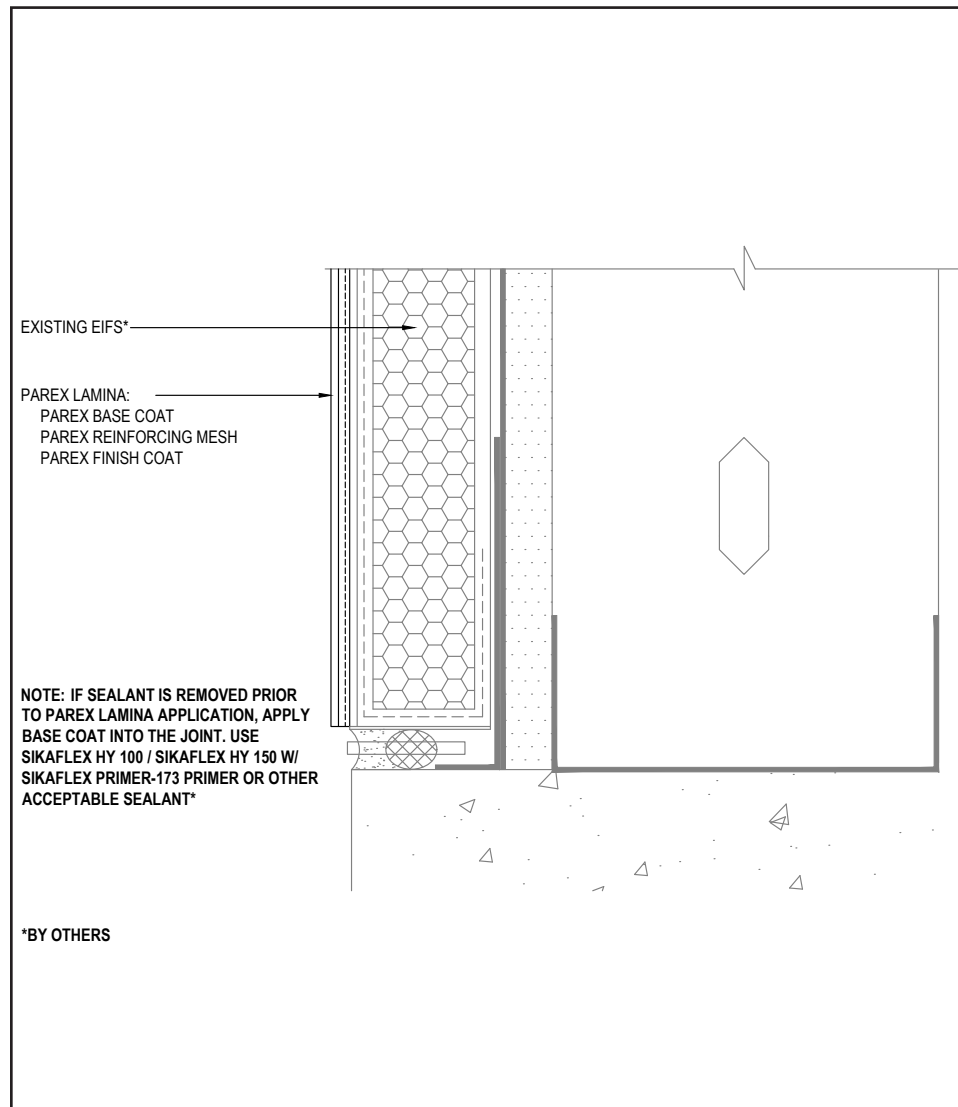
- Do not apply finish to areas that will receive sealant.
- If sealant is removed prior to Parex Lamina application, apply base coat into the joint.
- Use Sikaflex HY 100 Sikaflex HY 150 with Sikaflex Primer 173 or other acceptable sealants. Reference *Acceptable Sealants for use with Parex Wall Systems* Technical Bulletin for a list of sealants.
- Place weep tubes a maximum of 24" (610 mm) on center.

The details within are the latest recommendations and are represented in good faith by Sika Corporation US (hereinafter Sika). The details are subject to change without notice. Sika accepts no liability for the end use of the details. For conditions not shown, consult Sika for review of specific details.

- Install Sika materials in accordance with current installation instructions.
- Unsatisfactory conditions shall be reported to the General Contractor and corrected before the application of Sika products.

## Parex EIFS Resurfacing System

### TYPICAL TERMINATION AT FOUNDATION (FLUSH)



20B 0525

(\*NOTE: BY OTHERS)

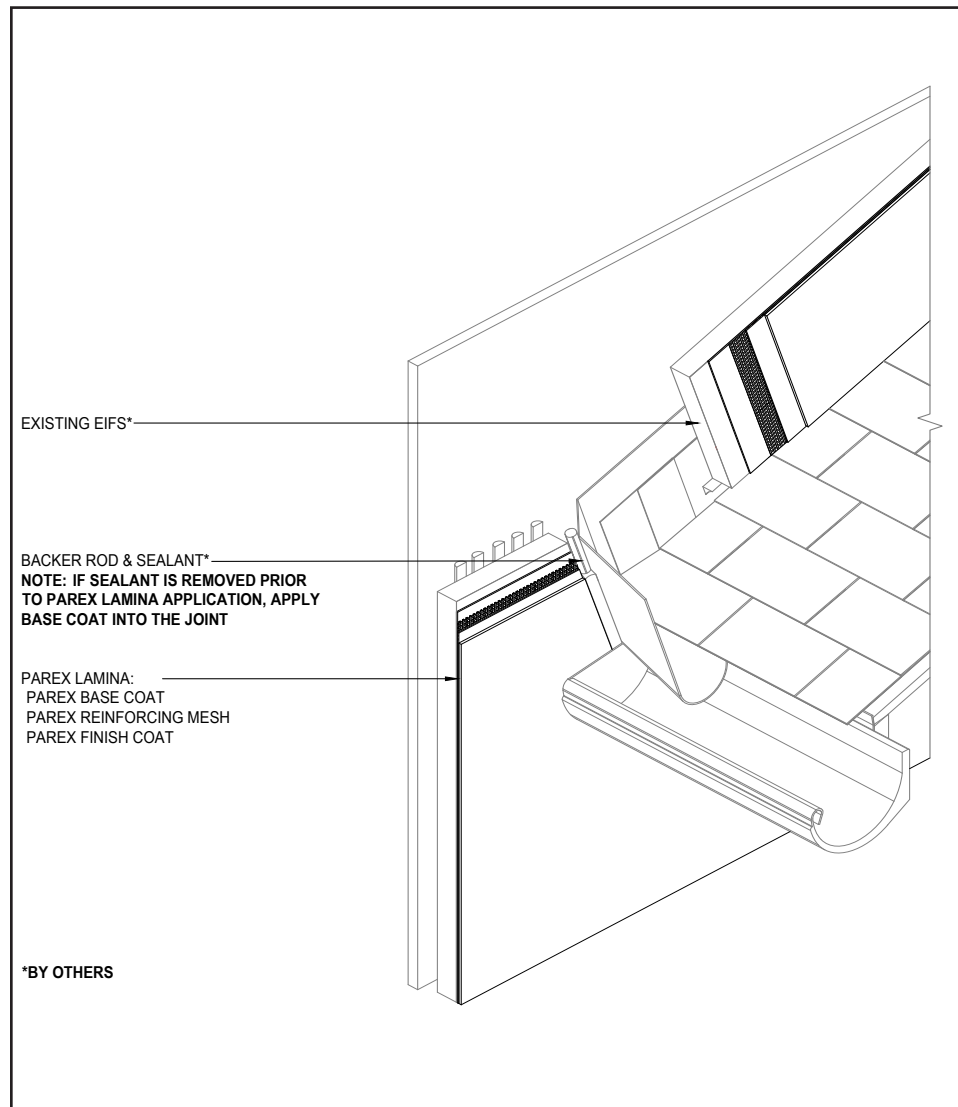
- Do not apply finish to areas that will receive sealant.
- If sealant is removed prior to Parex Lamina application, apply base coat into the joint.
- Use Sikaflex HY 100 Sikaflex HY 150 with Sikaflex Primer 173 or other acceptable sealants. Reference *Acceptable Sealants for use with Parex Wall Systems* Technical Bulletin for a list of sealants.
- Place weep tubes a maximum of 24" (610 mm) on center.

The details within are the latest recommendations and are represented in good faith by Sika Corporation US (hereinafter Sika). The details are subject to change without notice. Sika accepts no liability for the end use of the details. For conditions not shown, consult Sika for review of specific details.

- Install Sika materials in accordance with current installation instructions.
- Unsatisfactory conditions shall be reported to the General Contractor and corrected before the application of Sika products.

## Parex EIFS Resurfacing System

### TYPICAL KICK-OUT FLASHING



21 0525

(\*NOTE: BY OTHERS)

- Do not apply finish to areas that will receive sealant.
- If sealant is removed prior to Parex Lamina application, apply base coat into the joint.
- Use Sikaflex HY 100 Sikaflex HY 150 with Sikaflex Primer 173 or other acceptable sealants. Reference *Acceptable Sealants for use with Parex Wall Systems* Technical Bulletin for a list of sealants.

The details within are the latest recommendations and are represented in good faith by Sika Corporation US (hereinafter Sika). The details are subject to change without notice. Sika accepts no liability for the end use of the details. For conditions not shown, consult Sika for review of specific details.

- Install Sika materials in accordance with current installation instructions.
- Unsatisfactory conditions shall be reported to the General Contractor and corrected before the application of Sika products.





**BUILDING TRUST**



## **LIMITED WARRANTY NOTICE**

Prior to each use of any product of Sika Corporation, its subsidiaries or affiliates ("SIKA"), the user must always read and follow the warnings and instructions on the product's most current product label, Product Data Sheet and Safety Data Sheet which are available at [usa.sika.com/Parex](http://usa.sika.com/Parex) or by calling our Technical Service Department at +1 (800) 226-2424.

Nothing contained in any SIKA literature or materials relieves the user of the obligation to read and follow the warnings and instructions for each SIKA product as set forth in the current product label, Product Data Sheet and Safety Data Sheet prior to use of the SIKA product.

SIKA warrants this product for one year from date of installation to be free from manufacturing defects and to meet the technical properties on the current Product Data Sheet if used as directed within the product's shelf life. User determines suitability of product for intended use and assumes all risks. User's and/or buyer's sole remedy shall be limited to the purchase price or replacement of this product exclusive of any labor costs. NO OTHER WARRANTIES EXPRESS OR IMPLIED SHALL APPLY INCLUDING ANY WARRANTY OF MERCHANTABILITY OR FITNESS FOR A PARTICULAR PURPOSE. SIKA SHALL NOT BE LIABLE UNDER ANY LEGAL THEORY FOR SPECIAL OR CONSEQUENTIAL DAMAGES. SIKA SHALL NOT BE RESPONSIBLE FOR THE USE OF THIS PRODUCT IN A MANNER TO INFRINGE ON ANY PATENT OR ANY OTHER INTELLECTUAL PROPERTY RIGHTS HELD BY OTHERS. Sale of SIKA products are subject to the Terms and Conditions of Sale which are available at [usa.sika.com](http://usa.sika.com).

For the most current version of this literature, please visit our website at [usa.sika.com/parex](http://usa.sika.com/parex).

**Sika Corporation**

201 Polito Avenue  
Lyndhurst, NJ 07071 USA  
Customer Service +1 (800) 433-9517  
Technical Service +1 (800) 226-2424  
[usa.sika.com/parex](http://usa.sika.com/parex)

Rev May 2025

**BUILDING TRUST**

