



Sikafloor[®] MultiDur[®]

Industrial Floor Systems

BUILDING TRUST



Sikafloor® MultiDur® SYSTEMS

Why Choose Sika Seamless Flooring?

In high-demand industrial settings such as manufacturing, warehousing, production plants, mechanical and other commercial building types, Sikafloor MultiDur Systems are the optimum protection for concrete surfaces. MultiDur Systems are engineered with Sika's world-leading epoxy resins to defend against heavy pedestrian and vehicle traffic, large equipment, abrasion, or harsh chemicals. The MultiDur family has a versatile system that fits every environment's special needs.

Sikafloor MultiDur Systems thrive in demanding environments. Designers and facility managers rely on its trusted reputation for superior protection and have installed millions of square feet of Sikafloor around the globe.

The Sikafloor Advantage

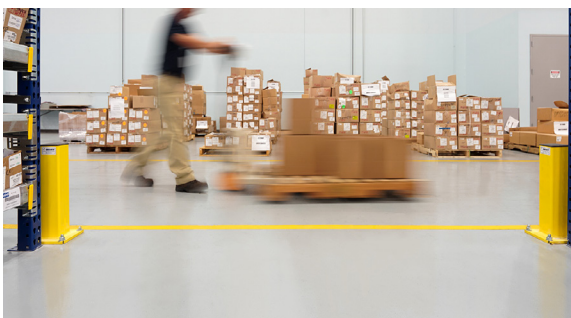
- Can be applied in thin mil, self-leveling or broadcast slurries, and mortar thicknesses
- Excellent chemical, abrasion, impact resistance and compressive strength
- Available in breathable, water-based chemistries
- Specially formulated to eliminate blistering
- Odorless and low VOC
- Does not support the growth of bacteria or fungus
- Superior lifecycle and ROI vs. tile and other traditional flooring products
- Very low maintenance requirements



Manufacturing



Vehicle and Aviation Facilities



Warehouses



Loading Docks

Engineered From the Ground Up

Many factors such as impact, chemical resistance, temperature requirements, light reflection, and slip resistant textures are important considerations when recommending a flooring system. It is important to fully understand each area's performance requirements to select the appropriate system that best fits the environment.

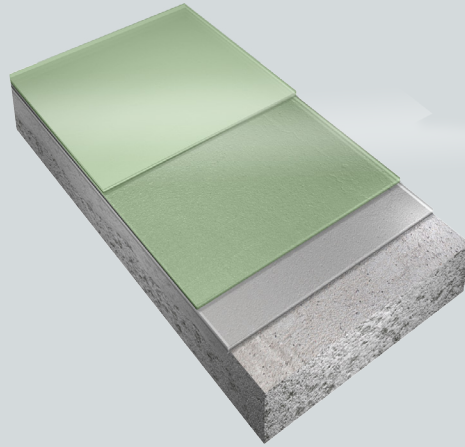
That's why Sika doesn't just provide off the shelf, cookie cutter solutions. Every project is reviewed for projected use, potential exposures and future operations to recommend the ideal Sikafloor system.

Sikafloor MultiDur EC - EPOXY COATING SYSTEM

Sikafloor MultiDur EC is a solid color, high gloss, resin rich, seamless, epoxy floor coating that is well-suited for medium duty traffic areas. This general service coating system delivers an easy to maintain smooth surface with chemical and abrasion resistance. Use examples include:

- Medium Duty Manufacturing
- Animal Care Facilities
- Institutional Settings
- Assembly Areas

Formerly known as Morritex Coating System

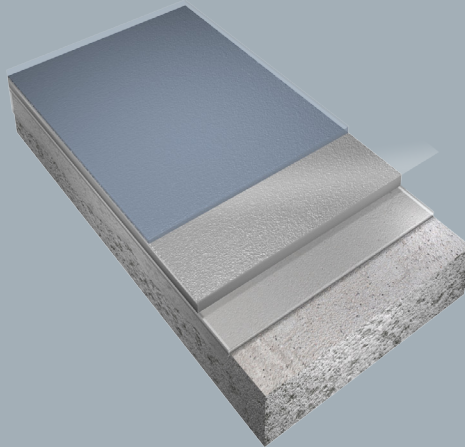


Sikafloor MultiDur ECB - BROADCAST EPOXY COATING SYSTEM

Sikafloor MultiDur ECB is a solid color, textured, resin-rich, seamless, epoxy floor coating. The incorporation of a durable aggregate broadcast and sealed into the surface increases the coating thickness and extends service life. This coating is chemical, abrasion and impact resistant. It can be customized to meet aesthetic and slip resistance requirements. Use examples include:

- Locker and Shower Rooms
- Manufacturing Facilities
- Pharmaceutical Processing
- Laundry Facilities

Formerly known as Morritex Broadcast System



Sikafloor MultiDur WBC - WATER-BASED EPOXY COATING

Sikafloor MultiDur WBC is a solid color, water-based, high gloss, smooth resin rich, seamless, epoxy floor coating. This breathable system produces an attractive, smooth surface texture that is easy to clean and maintain. This system can also be used as a pigmented primer under other Sikafloor Systems. Use examples include:

- Use on High Moisture Concrete*
- Medium Manufacturing
- Walkways and Corridors
- Assembly Areas

*When used as a two-coat system

Engineered with Sikafloor-2540

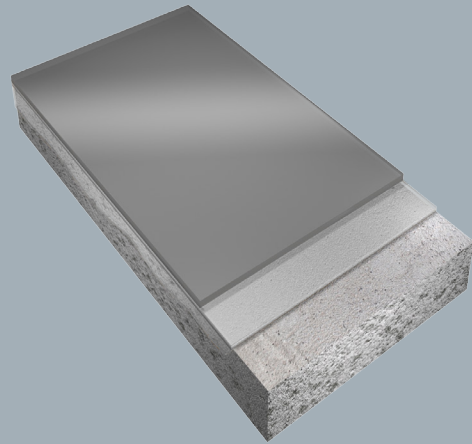


Sikafloor MultiDur SL - SELF-LEVELING SMOOTH EPOXY SLURRY

Sikafloor MultiDur SL is a self-leveling, solid color, resin rich, seamless epoxy floor slurry. Aggregate is added during mixing to significantly extend the resin volume without sacrificing desirable physical properties allowing thicker applications that extend service life. Use examples include:

- Labs and Clean Rooms
- Cafeterias
- Pharmaceutical Manufacturing
- Laundry Facilities

Formerly known as Morritex Smooth System

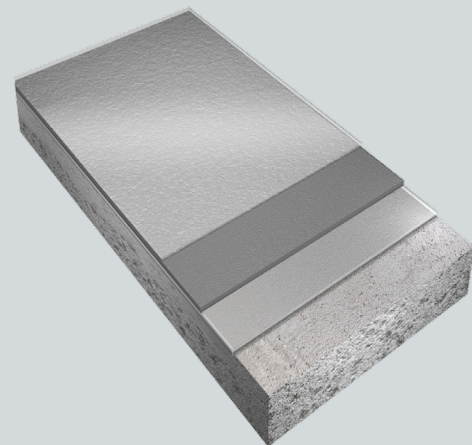


Sikafloor MultiDur SLB - SELF-LEVELING BROADCAST EPOXY SLURRY

Sikafloor MultiDur SLB is a self-leveling, solid color, resin rich, seamless epoxy floor slurry with aggregate added to increase the resin volume allowing thicker applications that extend service life. This system also features an aggregate broadcast into the body coat to improve slip resistance and wear. Use examples include:

- Heavy Manufacturing
- Storage Areas
- Chemical Processing
- Institutional Facilities

Formerly known as Morritex Broadcast System

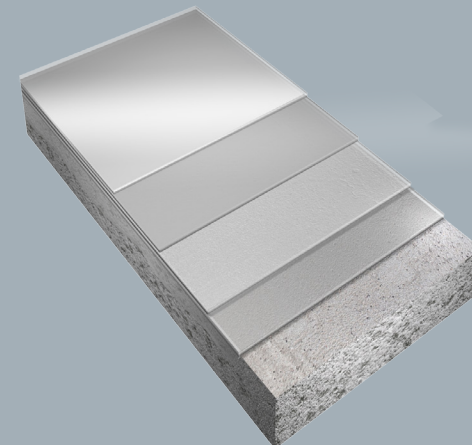


Sikafloor MultiDur HS - AVIATION GRADE COATING SYSTEM

Sikafloor MultiDur HS is a monolithic, solid color resin floor system with superior chemical resistance that has been specifically engineered for use in aircraft hangars and aviation environments. This system is resistant to typical aviation fluids such as Jet-A and Skydrol. Use examples include:

- Aircraft Hangars
- Aviation Maintenance Areas
- Aircraft Fluids Storage Facilities
- Walkways and Common Areas

Formerly known as Morritex Hangar System

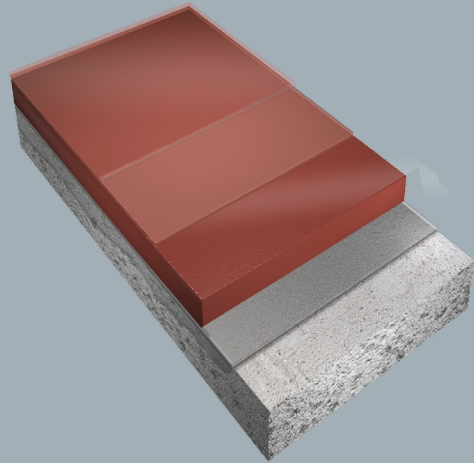


Sikafloor MultiDur TG - EPOXY MORTAR SYSTEM

Sikafloor MultiDur TG is a solid color, aggregate filled epoxy mortar with high density and compressive strength. This heavy-duty system demonstrates excellent chemical, abrasion and impact resistance. MultiDur TG can be customized to meet decor and safety requirements, including unlimited colors, finishes, textures and integral cove base. Use examples include:

- Processing Areas
- Manufacturing Plants
- Locker Rooms
- Animal Care Facilities

Formerly known as Epo-Rok System

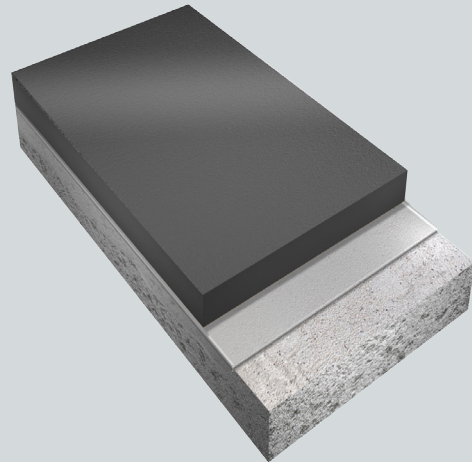


Sikafloor MultiDur MS - TROWELED EPOXY METALLIC MORTAR

Sikafloor MultiDur MS is a unique, high abrasion and wear resistant troweled mortar comprised of an epoxy binder impregnated with metallic aggregate. The resulting system has superior resistance to impact, wear and abrasion. Increased chemical resistance is available through several optional top coats. Use examples include:

- Tipping Floors
- Heavy Industrial Vehicles and Traffic
- Restores Damaged Concrete Slabs
- Chemical Processing and Storage Areas
- Protects New Concrete Surfaces

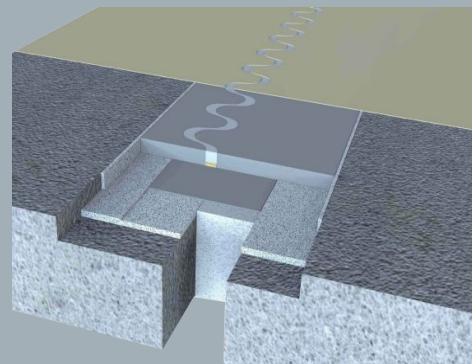
Formerly known as Sikafloor-190



Sika FloorJoint S - POLYMER COMPOSITE FLOOR JOINT

Sika FloorJoint S is a flexible joint panel that moves with the slab to provide a level profile without point loading, the root cause of damaged joints. It is a superior solution to common joint fillers, sealants and patches that only last a few months.

- Similar Thermal Expansion to Resinous Floors
- Dampens traffic vibration, improves load distribution
- Quick Install Reduces Downtime
- High Chemical and Mechanical Abuse Resistance
- Seamless Transition Between Existing Slabs
- Non-corrosive and Coatable
- No Welding Required

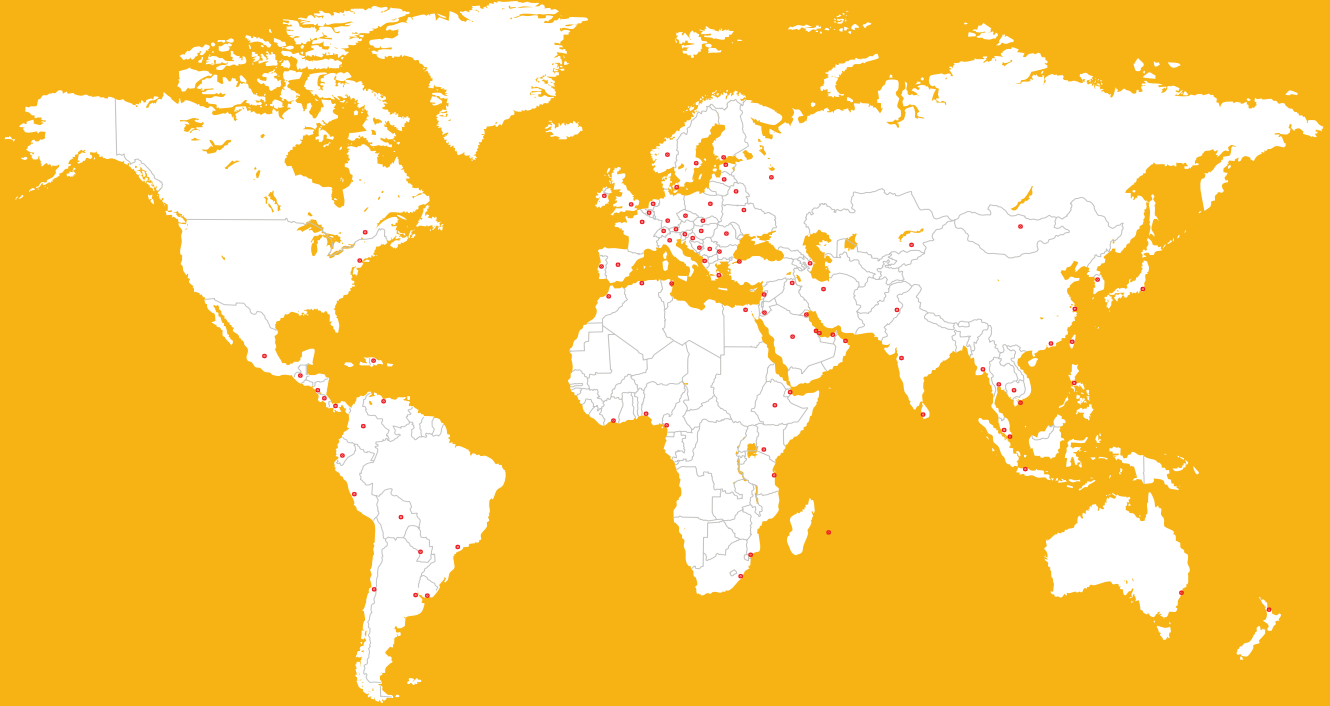


SUSTAINABLE AND RESPONSIBLE CHEMISTRY

Sika is committed to pioneering sustainable solutions to address global challenges, and to achieve this safely at the lowest impact on resources. Creating and increasing value while reducing impact – that is the goal. Our strategy fully integrates sustainability into all our business processes, and we strive to create value for our customers and partners.

Green Building Initiatives and Certification Systems, such as LEED, assess the sustainable performance of building materials and the performance of the whole building. Such initiatives are of growing importance and are consequently influencing the market demand for construction products. Sika is actively participating in these initiatives and programs.

LEED v4, and GreenCircle test certificates along with detailed information on how Sika solutions support sustainable construction, reduce CO2 emissions and help save energy, raw materials and water while meeting sustainable building standards can be found at www.sika.com/sustainability.



WE ARE SIKA

Sika is a specialty chemicals company with a leading position in the development and production of systems and products for bonding, sealing, damping, reinforcing and protecting in the building sector and the motor vehicle industry. Sika's product lines feature concrete admixtures, mortars, sealants and adhesives, structural strengthening systems, industrial flooring as well as roofing and waterproofing systems.



Sika Corporation • Flooring

201 Polito Avenue
Lyndhurst NJ 07071
Tel: 800 933 7452
www.SikaFloorUSA.com

BUILDING TRUST

