



TRAFFIC COATINGS

Sikalastic® TC 295

TINT BASE TOP COAT

CUSTOMIZABLE UV RESISTANT TRAFFIC COATING

BUILDING TRUST



CUSTOMIZABLE UV RESISTANT TRAFFIC COATING

THE ABILITY TO CUSTOMIZE THE COLOR OF A TRAFFIC BEARING COATING WHILE RETAINING ITS HIGH-PERFORMANCE CHARACTERISTICS INCREASES THE AESTHETIC APPEARANCE.

From parking structures to stadiums, having your structure decked out in corporate or team colors evokes an emotional connection and a strong sense of attachment that will make your customers feeling proud and wanting to continually engage with your structure.

IDEAL USES/APPLICATIONS:

- Stadiums
- Parking Garages
- Plywood Decks/Balconies
- Pedestrian Walkways



Customizable traffic coatings provide yet another customer benefit – ease of navigation. Areas such as handicap parking spaces or high awareness zones coated with a customizable traffic coating allows customers to easily find the specific area they need while confidently navigating your structure.

Sikalastic TC 295 Tint Base from Sika is based on the proven performance of Sikalastic TC 295 and is a tintable, high-performance UV resistant, two-component traffic bearing top coat for use in Sikalastic Traffic 2000, 2500, 2530 and 2575. Sikalastic TC 295 Tint Base is suitable for both vehicular and pedestrian traffic.



COLOR PORTFOLIO

A wide selection of colors, which include typical signage colors such as red, yellow, blue and green, are available. Custom colors are also available by contacting your Sika representative for more information.

40 STANDARD COLORS

						
OFF WHITE	WHITE	PEBBLE	CAMEO	BEACHWALK	SOFT BLUSH	CREAM
						
SPECIAL WHITE	SESAME	NP 2 OFF WHITE	PARKLAND	DESERT TAN	SPECIAL IVORY	RIVERBEND
						
MOONSTONE	ALUMINUM GRAY	CHROME GRAY	PARCHMENT	STONE	BRICK BUFF	TAN
						
BROWN BERRY	SHELLSIDE	QUICK SILVER	QUARTZ	QUAIL BROWN	NATURAL GRAY	SPECIAL TAN
						
REDWOOD TAN	STEEL GRAY	HAZE	BRONZE	BRICK RED	MEDIUM BRONZE	LIMESTONE
						
IRISH GREEN	WINE	SPECIAL BRONZE	PRECAST GREY	BLACK		

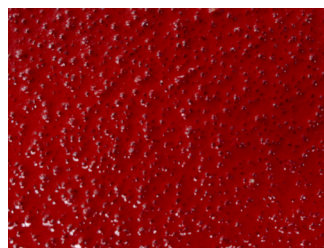
NOTE:

Colors are approximate; actual applications of Sikalastic® coatings may vary from colors shown. This color card is intended as a guide only. See your Sika dealer for actual color samples.

AGGREGATES



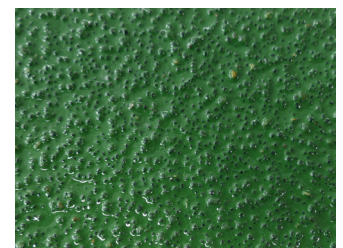
BENDER BLUE (HANDICAP STALLS)



TARGET RED (WARNING SIGNS)

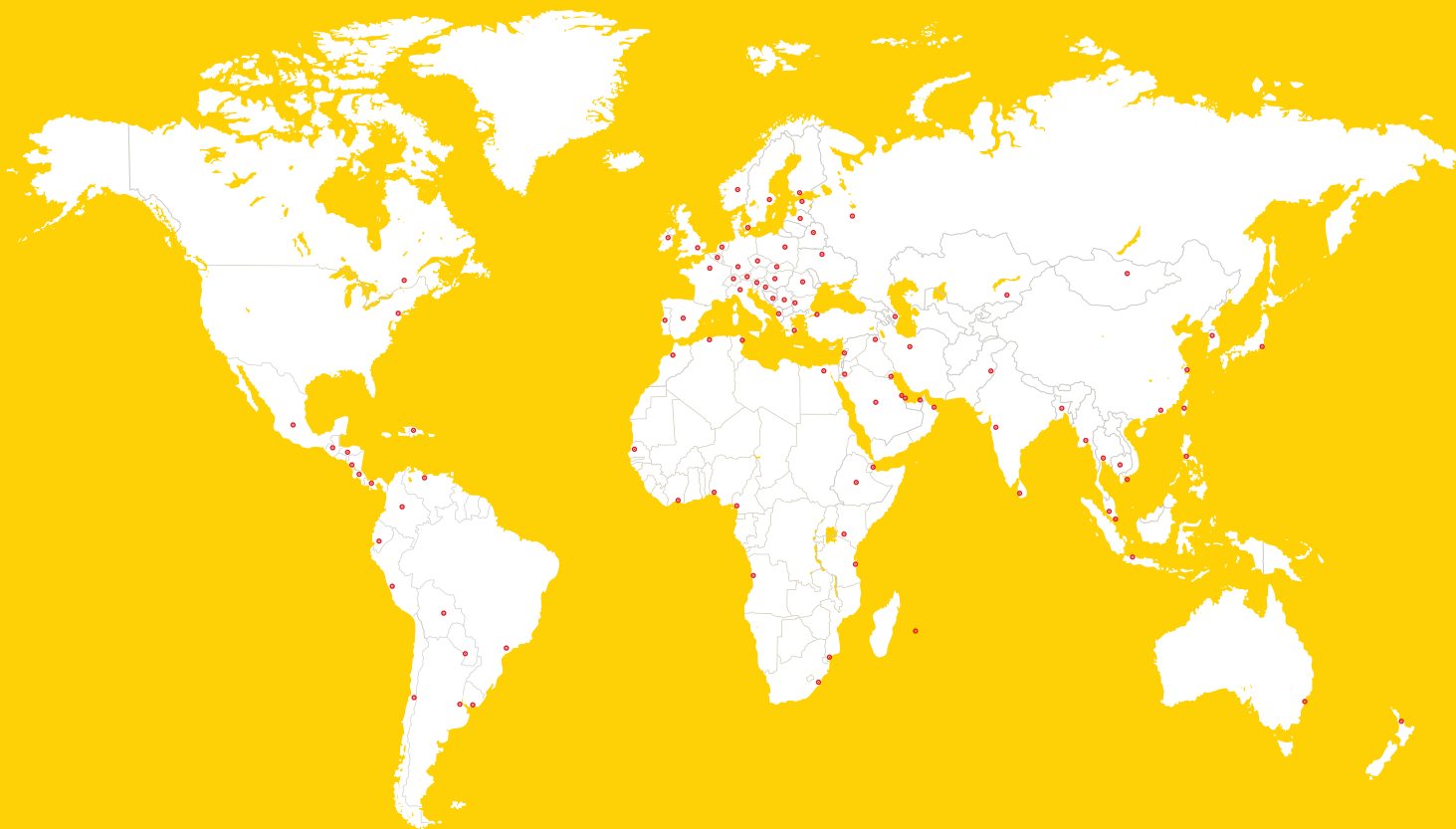


SAFETY YELLOW (CAUTION SIGNS)



SHAMROCK GREEN (EV/CHARGING STATIONS)

GLOBAL BUT LOCAL PARTNERSHIP



WE ARE SIKA

With more than 100 years of experience, Sika is a worldwide innovation and sustainability leader in the development and production of systems and products for commercial and residential construction, as well as the transportation, marine, automotive, and renewable energy manufacturing industries.

Sika has offices in 103 countries with over 400 manufacturing facilities and more than 33,000 employees worldwide. With annual sales of CHF 11.24 billion in 2023, our commitment to quality, innovation, and the environment as well as putting our customer's needs first, encompasses why Sika is the global leader in our industries.



Our most current General Sales Conditions shall apply.
Please consult the Data Sheet prior to any use and processing.

© 2025 Sika , rev 08/2025

Sika Corporation
201 Polito Avenue
Lyndhurst, NJ 07071 USA
Phone 201-933-8800
usa.sika.com

BUILDING TRUST

