

Pebbletex Vulcan NC

Continuously insulated, water-drainage exterior wall cladding featuring noncombustible mineral wool insulation and Finestop air/water-resistive barrier.

DESCRIPTION

Pebbletex Vulcan NC is a continuously insulated, water-drainage wall cladding. The system utilizes ROCKWOOL Frontrock™ continuous exterior insulation and LaHabra Finestop fluid-applied air/water-resistive barrier that provides continuous air and moisture protection.

USES

May be used in fire-resistance-rated construction and in any construction type, including IBC Types I through V, when installed in accordance with system instructions. For use on above grade vertical walls.

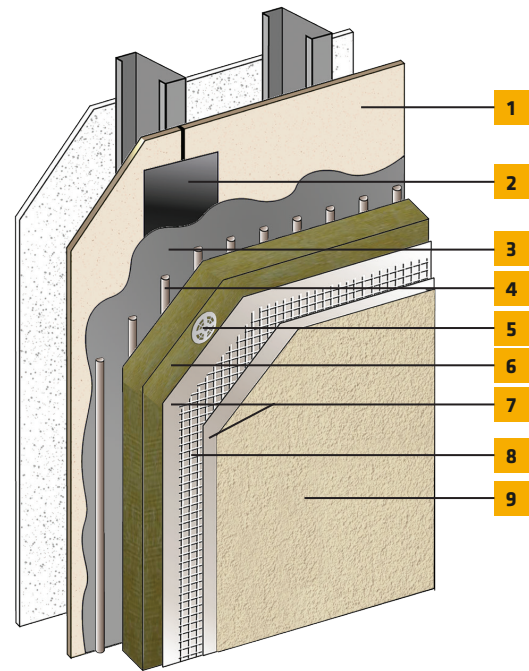
ACCEPTABLE SUBSTRATES

Poured concrete/unit masonry; ASTM C1177 type sheathings, including DensGlass™ exterior sheathing, DensElement (sheathing only), eXP™ sheathing, GlasRoc® sheathing, Securock™ glass-mat sheathing, Weather Defense™ Platinum sheathing, GreenGlass® sheathing; cement-boards (ASTM C1325 Type A Exterior) including PermaBase™ cement-board; untreated Exposure I or exterior plywood sheathing (grade C-D or better); untreated Exposure I OSB, Huber Zip (sheathing only); Fire Treated wood sheathing: Pyro-Guard® and Dricon® plywood and FlameBlock® OSB; gypsum sheathing (ASTM C79/ASTM C1396).

CODE COMPLIANCE

Document	Code Description
ICC-ESR 2186	Complies with IBC and IRC
ASTM E2568 / AC 235	Complies with requirements
ASTM E119	Does not detract from fire rating of base wall
ICC-ESR 2986 - Finestop RA/RS	Air/water-resistive barrier*
NFPA 285/268	Meets requirements for use on fire-resistance-rated construction and in any construction type, including IBC Types I through V
ASTM E136	Insulation defined as noncombustible
ASTM C612	ROCKWOOL insulation is compliant for mineral fiber block and board thermal insulation
For testing results, please reference Pebbletex Vulcan NC specification.	

* Finestop RA/RS/VB can be used behind all claddings where more than one wall system is specified, creating one continuous AWRB system. This is appropriate whenever Finestop Pebbletex Vulcan NC is used with other cladding types on a multi-clad building.



1. Acceptable Substrate*
2. SikaWall Joint Treatment: Sheathing Fabric, MaxFlash or Flash Seal NP
3. Finestop RA/RS/VB
4. LaHabra Adhesive /Base Coat
5. Mechanical Fastener*
6. ROCKWOOL Frontrock™*
7. LaHabra Base Coat
8. LaHabra Reinforcing Mesh
9. LaHabra Finish Coat

*By Others

Pebbletex Vulcan NC

DESIGN CONSIDERATIONS

- Use only for above grade vertical walls. Not for use below grade or on surfaces subject to continuous or intermittent immersion in water. System must terminate a minimum of 6" (152 mm) above grade.
- Not compatible with SikaWall MaxGrip Veneer Adhesive and adhered veneer.
- Requires the use of 9 fasteners per board; 4 through the insulation, 5 through the reinforced base coat. Refer to the Technical Bulletin; Pebbletex Vulcan NC Installation Guide for full installation details.
- Multiple coats of base coat may be required to achieve a flat surface.
- Use of smooth/fine finish textures is not advised, however if desired to achieve design requirements, a large-scale mock-up is recommended. Typical locations for system expansion joints are at building expansion joints, at prefabricated panel joints, floor lines of wood frame construction or where slip tracks are used in steel frame construction, where substrates change and where structural movement is anticipated. It is the sole responsibility of the project design team, including the architect, engineer, etc., to ultimately determine specific expansion joint placement, width and design. Detail specific locations in construction drawings.

MATERIAL SUBSTITUTION

Material substitution will adversely affect system performance and will void all warranty coverage unless approved in writing by Sika Facades.

ACCEPTABLE MINERAL WOOL

ROCKWOOL Frontrock™*

Insulation Type	Density	R-Value	Thickness Min	Thickness Max
Mono Density	8.5 lbs/ft ³	4 per inch	1.5"	4"
Dual Density	9.3 lbs/ft ³ outer layer 5.9 lbs/ft ³ inner layer	4 per inch	2.5"	4"

ASTM C612 Type IVA; non-combustible per ASTM E136; Flame Spread 0, Smoke Developed ≤ 15 per ASTM E84. Size 2' x 4' (0.6 m x 1.22 m)

For additional insulation requirements, please reference Pebbletex Vulcan NC specification

*For full testing results refer to the Frontrock™ Technical Data Sheet. rockwool.com/products/frontrock

LIMITED WARRANTY NOTICE

Prior to each use of any product of Sika Corporation, its subsidiaries or affiliates ("SIKA"), the user must always read and follow the warnings and instructions on the product's most current product label, Product Data Sheet and Safety Data Sheet which are available at usa.sika.com/laHabra or by calling our Technical Service Department at +1 (800) 589-1336. Nothing contained in any SIKA literature or materials relieves the user of the obligation to read and follow the warnings and instructions for each SIKA product as set forth in the current product label, Product Data Sheet and Safety Data Sheet prior to use of the SIKA product.

SIKA warrants this product for one year from date of installation to be free from manufacturing defects and to meet the technical properties on the current Product Data Sheet if used as directed within the product's shelf life. User determines suitability of product for intended use and assumes all risks. User's and/or buyer's sole remedy shall be limited to the purchase price or replacement of this product exclusive of any labor costs. NO OTHER WARRANTIES EXPRESS OR IMPLIED SHALL APPLY INCLUDING ANY WARRANTY OF MERCHANTABILITY OR FITNESS FOR A PARTICULAR PURPOSE. SIKA SHALL NOT BE LIABLE UNDER ANY LEGAL THEORY FOR SPECIAL OR CONSEQUENTIAL DAMAGES. SIKA SHALL NOT BE RESPONSIBLE FOR THE USE OF THIS PRODUCT IN A MANNER TO INFRINGE ON ANY PATENT OR ANY OTHER INTELLECTUAL PROPERTY RIGHTS HELD BY OTHERS. Sale of SIKA products are subject to the Terms and Conditions of Sale which are available at <https://usa.sika.com/> or by calling +1 (800) 589-1336.

Sika Corporation
201 Polito Avenue
Lyndhurst, NJ 07071 USA
Customer Service +1 (800) 433-9517
Technical Service +1 (800) 589-1336
usa.sika.com/laHabra

Rev October 2024

BUILDING TRUST

