



# Sika® ComfortFloor®

## ERGONOMIC PERFORMANCE FLOORING

ComfortFloor optimizes the symmetry between comfort and toughness by balancing ergonomic support and durability. ComfortFloor's flexible urethane construction provides comfort in areas where personnel must stand or work for long periods but is tough enough to stand up to heavy pedestrian traffic, chair casters and wheeled loads.

These robust flooring systems' excellent crack-bridging values are also used to restore damaged substrates and extend the life of floors. Further, ComfortFloor reduces the transmission of horizontal noise while providing decorative freedom with an almost unlimited selection of colors and flake designs.

### SUSTAINABILITY AND COMFORT

Sika has been helping design, create and maintain sustainable structures as well as keeping landfills clear and protecting the environment through the use of Rapidly Renewable Materials, such as ComfortFloor shock pads that use 80% recycled goods.

Sika flooring products are water-based, low emitting, LEED® 4.1 contributing and are Green Circle certified.



- Fatigue Reducing
- Noise Attenuating
- Highest Indoor Air Quality Standards
- Durable Aesthetics
- Low Maintenance
- LEED Contributing

**BUILDING TRUST**



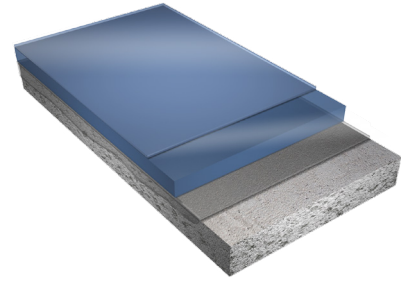
## ComfortFloor PS 23

Smooth, Solid Colored Floor System

ComfortFloor PS-23 is a seamless, fluid applied urethane floor system comprised of 100% solids epoxy primer, pigmented self leveling urethane wear course and a wear resistant, pigmented water based urethane top coat. Typical uses include:

- Healthcare facilities
- Schools and universities
- Leisure and cultural venues
- Commercial and public buildings

Formerly know as Sika ComfortFloor



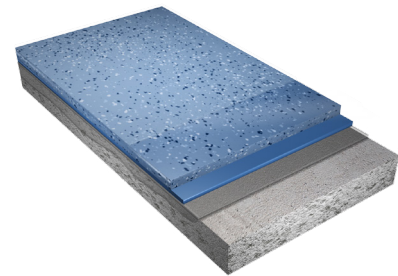
## ComfortFloor PS 25

Decorative Flake Floor System

ComfortFloor PS-25 is built with a 100% solids epoxy primer, a pigmented self leveling urethane body coat, a urethane receiver coat broadcast with decorative flakes, and a wear resistant, pigmented water based urethane top coat. Typical uses include:

- Hospitals and clinics
- Education facilities
- Offices, corridors, lobbies
- Retail establishments

Formerly know as Sika ComfortFloor Decorative System



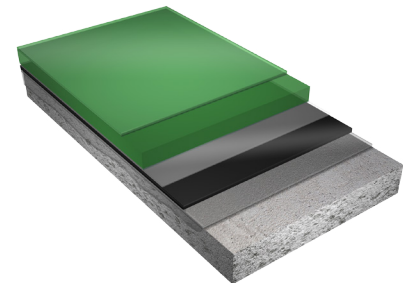
## ComfortFloor PS 65

Solid Colored, Ergonomic Floor System

Comfortfloor PS-65 is a seamless, sanitary system comprised of 100% solids urethane adhesive, 5mm pad of more than 80% recycled content, pigmented self leveling urethane wear course and a wear resistant, pigmented water based urethane top coat. Typical uses include:

- Clinics, labs, cleanrooms
- Commercial offices and lobbies
- Hospitality venues
- Animal care facilities

Formerly know as Sika ComfortFloor Pro System



## ComfortFloor PS 67

Decorative Flake, Ergonomic Floor System

ComfortFloor PS-67 is a seamless, hygienic, system using a 100% solids urethane adhesive, 5mm pad of more than 80% recycled content, pigmented self leveling urethane body coat, a urethane receiver coat broadcast with decorative flake and a wear resistant, pigmented water based urethane topcoat. Typical uses include:

- Cleanrooms and laboratories
- Classrooms and studios
- Lobbies, offices, corridors
- Public spaces

Formerly know as Sika ComfortFloor Decorative Pro System

