



CONCRETE COLOR

Sika[®] DECORATIVE CONCRETE

COLORING, TEXTURING, AND PERFORMANCE SYSTEMS FOR CONCRETE

BUILDING TRUST





NE GEORGIA MEDICAL CENTER The concrete stairs and pad were colored with CHROMIX® Admixtures in "Cox Beige", with LITHOCAST™ Surface Retarder 03 applied for an acid etched exposed aggregate finish. SCOFIELD® Cureseal-W™ was applied the following day. Both treads and risers are exposed.



INTRODUCTION

ARCHITECTURAL DECORATIVE CONCRETE IS DEFINED AS ANY CONCRETE THAT IS INTENDED TO SERVE AS AN AESTHETIC ENHANCEMENT OF THE OVERALL DESIGN OF A STRUCTURE OR SPACE.

With awareness and appreciation of the diverse uses for concrete continuing to increase worldwide, concrete remains the ideal solution for new construction and renovation in commercial and residential developments, museums, educational facilities, parks, public areas, retail, restaurant and hospitality projects, streetscapes, theme parks, green spaces and so much more. Concrete provides advantages for colorful, healthy, sustainable, LEED-compliant and cost-effective construction to meet today's design and construction challenges.

Sika offers a complete line of engineered decorative concrete coloring, texturing, refurbishment and performance systems from the two industry-leading brands: Butterfield Color, the contractor's choice; and Scofield, the most specified brand of architectural concrete color. Together, these highly reputable brands bridge the gap between functionality and aesthetics, allowing architects, specifiers, contractors and homeowners to achieve both performance goals and design intent. We're changing the way the world looks at concrete.

BUTTERFIELD®
COLOR 

A SIKA BRAND

 **SCOFIELD**

A SIKA BRAND

INTEGRAL COLOR

SIKA INTEGRAL COLORS are added to the concrete mix at the batch plant or at the jobsite. When the concrete is poured, it is consistently colored all the way through the mix. Integral color is typically the most cost-effective way to add color to concrete, and it can be used alone or in conjunction with other concrete coloring and finishing techniques to create a variety of appearances.

Sika's Integral Colors are a precise blend of non-fading, synthetic iron oxides which produce uniform, permanent, streak-free colors in all types of architectural concrete. This includes cast-in-place, precast, and dry-cast concrete floor slabs, walls, steps, sidewalks, curbs, columns, arches, blocks, pavers, and other decorative objects. All Sika Integral Color conforms to ASTM Standard C 979 (Standard Specification for Pigments for Integrally Colored Concrete). Sika Integral Colors can also be used to help mitigate the Urban Heat Island Effect through the use of special reflective pigments.

A key component of Sika Integral color is our color-matched concrete curing compound. Used during concrete placement, it reduces surface cracks and color variations that can be caused by uneven drying and efflorescence that commonly occurs in warm, windy, or dry environments.



AVAILABLE PRODUCTS

SCOFIELD®

- CHROMIX® Admixtures for Color-Conditioned® Concrete
- SOLACHROME™ Integral Treatment for High-SRI Concrete (bags only)
- SCOFIELD® Integral Color SG
- LITHOCHROME® Colorwax™

BUTTERFIELD COLOR®

- Uni-Mix® Integral Concrete Colorant
- Select Grade® Integral Concrete Colorant

ST. CHARLES MUNICIPAL BUILDING Utilizing a bold geometric pattern, the St. Charles Municipal Building highlights the versatility of designing with integral concrete color. Shown is Uni-Mix® Integral Concrete Color in "Custom Yellow", "Custom Green" and "Deep Charcoal".



SIKA INTEGRAL COLOR is available at select distributor and ready mix locations nationwide through our network of Granular Color Dispensers, or in ready-to-use, premeasured disintegrating bags.



U.N. MISSION BUILDING Designed by renowned architects Gwathmey Siegel & Associates Architects, the CIM award-winning United States Mission to the United Nations uses classic geometric shapes in a contrasting color to contrast with the buildings surrounding it. The cast-in-place concrete was colored with **CHROMIX®** Admixtures for Color-Conditioned® Concrete in "Mission Gray".



DETROIT RIVERWALK Spanning more than three miles, the Detroit International RiverWalk is the crown jewel in the downtown Detroit revitalization effort. Several colors of **CHROMIX®** Admixtures were used to create visual interest and integration with surrounding elements, including "Charcoal", "Sombrero Buff" and "Adobe Tan".

COLOR HARDENER

SIKA COLOR HARDENERS create abrasion-resistant interior floors and freeze-thaw stable exterior hardscapes that stand up to both foot and vehicular traffic and extreme weather. Precise blends of cement, gap-graded quartz aggregates, synthetic iron oxides, and plasticizer are formulated to produce the most consistent coverage possible. Color hardeners can be used stand-alone or in conjunction with Sika Integral Color. Finishing techniques such as stamping, jointing schemes, saw cutting, and stenciling create unique architectural surfaces. Color hardeners produce a tougher, more brightly colored concrete surface than integral color alone will provide. Sika offers two types of color hardener: one for solid color, and another with specialty aggregates such as natural emery and silicon carbide that can be sandblasted or lightly etched to create a surface that sparkles and glints in sunlight.

Color hardener is a common product choice for stamped concrete. Used in conjunction with a colored release and or antiquing agents, color hardener will provide a durable, realistic patterned and textured surface.



RAHWAY STATION This high-traffic rail station occupies a strategic location close to NYC. Durable, abrasion-resistant LITHOCHROME® Color Hardener was utilized in “Dark Red” and “Ash White” to create a simple, yet bold hardscape pattern.

AVAILABLE PRODUCTS SCOFIELD®

- LITHOCHROME® Color Hardener
- EMERCHROME® Color Hardener

BUTTERFIELD COLOR®

- Perma-Shake® Color Hardener



WILSHIRE GRAND At 73 stories, the Wilshire Grand Center is the tallest building in America west of the Mississippi River. Over 12,000 sf of decorative concrete using LITHOCHROME® Color Hardener in “Deep Charcoal” & “Stone Gray” were used as selected by the architect.



THEME PARK When combined with Sika® Stamps and Antiquing Release, concrete color hardener provides the most realistic imprinted concrete surfaces. LITHOCHROME® Color Hardener in "Ash White" with "Landmarks Gray" release.



GO ROMA The owners of this restaurant were looking for a classic Italian look in a challenging environment. Perma-Shake® Color Hardener in "Terra Cotta", "Chestnut" and "Colina Tan" provided exactly the floor they were looking for.



CENTRAL PARK In addition to its long-wearing characteristics, concrete color hardener is widely used for its vibrant colors on the surface of the concrete slab. This star pattern was created using LITHOCHROME® Color Hardener in "Blue Smoke", "Burberry Beige" and "Dark Red".

STAINS & DYES

SIKA CONCRETE STAINS are used to color the surface of new or existing concrete. These are penetrative stains that produce permanent, variegated color. Colors can be used in combination or diluted for a wide variety of effects. Sika's Concrete Stains can be used to add color to floors, walls, stairs, ramps, pools, and hardscapes, or to add natural looking color to precast structural pieces, artificial rock formations, statues, and other concrete objects.

Sika's acid stains impart a unique, antiqued appearance, and the color is permanent. Available in a limited palette of browns, greens and blacks, acid stain chemically reacts with the concrete and becomes part of the concrete surface. No two acid stained floors will be alike in appearance. Acid stained floors can look either weathered or contemporary, depending on the design of the surrounding environment.

Sika's water-based stains are high-performance, low-odor stains that offer a wider range of color options than acid stain, including vibrant reds, purples, yellows and blues. Water-based stains allow for fast installation and a quick return to service. The use of a protective sealer is necessary to maintain the color.

Sika® Formula One™ Concrete Dye is used as part of the Sika® Formula One™ Polished Concrete system (page 14). This liquid dye concentrate is added to acetone on the jobsite and is ready to use in minutes, creating colorful, jewel-like floors.



AVAILABLE PRODUCTS SCOFIELD®

- LITHOCHROME® Chemstain® Classic
- LITHOCHROME® Tintura™ Stain

BUTTERFIELD COLOR®

- Sierra Stain® Reactive Acid Stain
- Elements® Transparent Concrete Stain

SIKA®

- Sika® Formula One™ Liquid Dye Concentrate

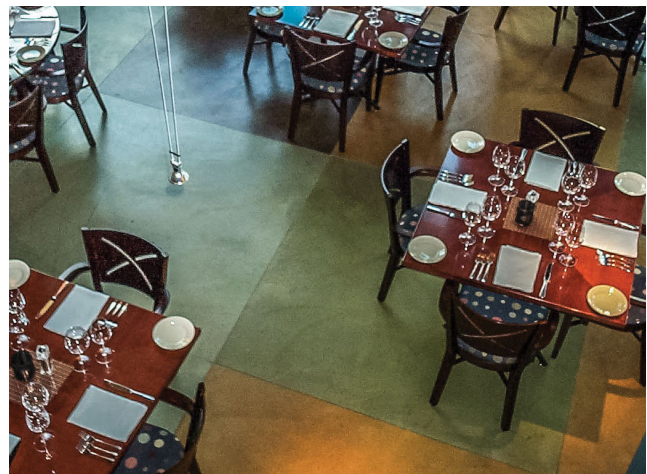
RUSH FITNESS CENTER The rich, luminous colors of Sika® Formula One™ Liquid Dye Concentrate in "Aztec Red" and "Snow Pea" were the perfect choice for the owners of this upscale fitness chain.



HARPETH HALL ATHLETIC CENTER A high-traffic space needed a durable, low maintenance, attractive concrete color solution. Unique, fluid lines draw the eye down this corridor using alternating bands of LITHOCHROME® Chemstain® Classic in "Padre Brown" and "Dark Walnut".



CHECKERBOARD PATIO The formal elegance displayed in this large, high-end outdoor patio was realized with sawcut and stained decorative concrete using LITHOCHROME® Tintura™ Stain in "Wheat Grain" and "Black".



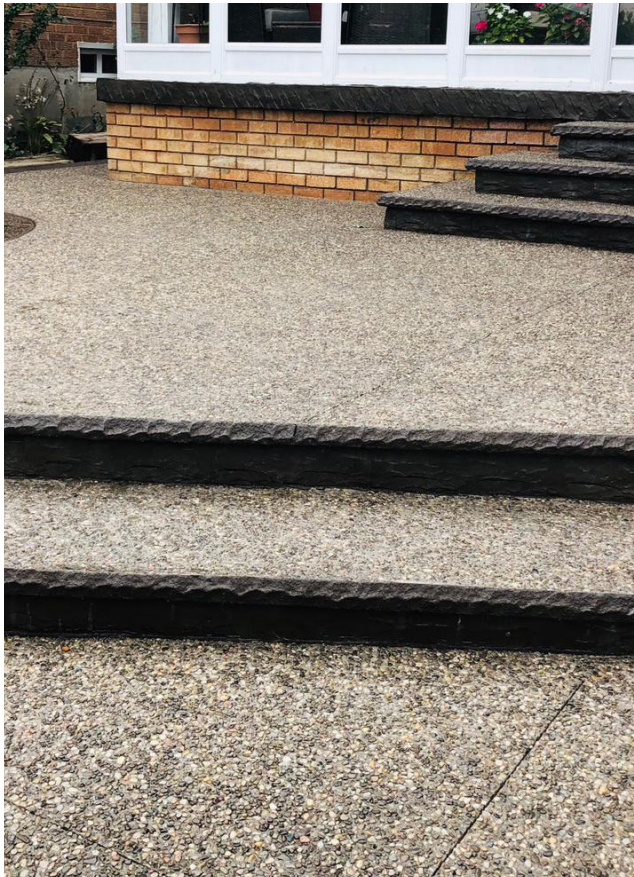
AUSTIN TEXAS HILTON This variegated acid stained floor was sawcut and stained with Sierra Stain® Reactive Acid Stain in multiple colors.

PATTERNS & TEXTURES

SIKA STAMPED CONCRETE utilizes imprinting tools to transform the surface of freshly placed architectural concrete into natural appearing, low-maintenance patterns and textures that mimic other more expensive building materials such as stone, slate, wood, tile or brick. In addition to having the structural strength and wear-resistance of concrete, the imprinted surface is both easier to install and more cost-effective than these other paving materials. Stamp tools are generally divided into “patterns” that resemble an arrangement of pavers, and “textures” which are seamless and have no joint lines.

Stamped concrete should always utilize at least two colors to achieve the most realistic appearance. There are several ways to color stamped concrete. Integral color and or color hardener, stand alone or utilized together, provide the base color(s), and colored antiquing release or antiquing agent provide the accent, or depth color(s).

Another option for adding texture to a concrete surface is to use integral color in conjunction with concrete surface retarder. The retarder is sprayed onto the surface of the freshly placed concrete, where it delays the set time of the surface paste. This allows the paste to be washed off later, consistently exposing selected amounts of sand or aggregate on the surface.



AVAILABLE PRODUCTS

SCOFIELD®

- LITHOTEX® Pavecrafters®
- LITHOCHROME® Color Hardener
- LITHOCHROME® Antiquing Release Pro
- LITHOTIQUE™ Antiquing Agent
- LITHOCAST™ Surface Retarder

BUTTERFIELD COLOR®

- Perma-Cast® Stamping Tools
- Perma-Shake® Color Hardener
- Perma-Cast® Antiquing Release
- Perma-Tique® Antiquing Agent
- SurfEtch™ Top Surface Retarder

CORONATION STREET Exposed aggregate is a popular choice to add texture to commercial and residential concrete projects. CHROMIX® Admixtures for Color-Conditioned® Concrete in “Winter Beige” was used along with LITHOCAST™ Surface Retarder 125 to create this attractive surface, accented with LITHOCHROME® Chemstain® Classic in “Black”.



RUSTIC WOOD PATTERN using Perma-Cast® Stamping Tools "Gilpin's Falls Bridge Plank", colored here with Uni-Mix® Integral Concrete Colorant in "Gull Gray", and accented with Perma-Cast® Antiquing Release in "Deep Charcoal".



STYLISH SLATE PATTERN using Perma-Cast® Stamping Tools "Majestic Ashlar", colored here with Uni-Mix® Integral Concrete Colorant in "Lanon Stone", and accented with Perma-Cast® Antiquing Release in "Storm Gray".



CLASSIC STONE PATTERN using Perma-Cast® Stamping Tools "24" x 24" Bluestone", colored here with Uni-Mix® Integral Concrete Colorant in "Harvest Wheat", and accented with Perma-Cast® Antiquing Release in "Colina Tan".

CONCRETE OVERLAYS

SIKA CONCRETE OVERLAYS are polymer modified cementitious toppings formulated for resurfacing structurally sound, non-moving concrete floors and exterior hardscapes. They provide a durable surface suitable for stamping with Sika® Stamp stamping tools or textured with Sika® Stamp texture rollers. The cured product creates an abrasion resistant surface suitable for pedestrian and automobile traffic. It is an ideal system for restoring worn, spalled, or color-blemished concrete, irregular surfaces or correcting construction errors.

There are two formulations available, a stampable grade and a spray or trowel applied stencil grade. The stampable grade is ideal for use with Sika® Stamp stamping tools and or Sika® Stamp texture rollers and is a screedable topping. The spray or trowel applied stencil grade is a slurry and primarily used with concrete stencils, and can provide a knock-down or broom finished appearance. There are 24 standard colors to choose from. Sika Concrete Stains can also be utilized with decorative concrete overlays.

Sika's decorative concrete overlays can be used in a wide variety of interior or exterior applications. They can be stamped, knocked-down, stenciled, stained, or broom finished. These fast-track, user-friendly cementitious toppings offer extended workability, excellent physical properties, and attractive integral color options.



AVAILABLE PRODUCTS

SCOFIELD®

- SCOFIELD® Texturetop® Pro Stamp Grade
- SCOFIELD® Texturetop® Pro Stencil Grade
- SCOFIELD® Texturetop® Pro Primer

BUTTERFIELD COLOR®

- T1000® Stampable Overlay
- T1000® Fine Overlay
- T1000® Primer

201 COURTYARD Age and wear had taken its toll on the courtyard and pool deck of this hotel, and a restoration was in order. SCOFIELD® Texturetop® Pro Stamp Grade in "Pecan Tan" was placed, then imprinted with LITHOTEX® Pavecrafters® to breathe new life into the high-traffic hardscape.



POOL DECK A knockdown finish on T1000® Fine Overlay in “Lanon Stone” color provided the perfect texture solution to this upscale apartment pool deck area. The knockdown finish can provide a natural measure of slip resistance.



201 COURTYARD The restoration of this hotel courtyard was completed using LITHOTEX® Pavecrafters® texture mats in “Fractured Earth” texture. LITHOCHROME® Antiquing Release Pro in “Walnut” completed the look.



MAJESTIC TOYOTA T1000® Stampable Overlay in “Lanon Stone” was used to resurface this car dealership entrance area, with Perma-Cast® Stamping Tool “Majestic Ashlar”.

POLISHED CONCRETE

SIKA® FORMULA ONE™ POLISHED CONCRETE is an engineered system of products designed to add color, harden, densify, and protect the surface of concrete during and after the grinding and polishing process. Polished concrete floors are popular due to their aesthetic appeal, durability, and low maintenance. They are often used in educational, commercial, government, and retail locations including restaurants. Both integral colored and color hardened floors are candidates for polishing.

Polished concrete is a mechanical process of cutting or honing an interior concrete slab. Adding Sika's Formula One™ concrete dye (if desired), densifier, guard, or finish coat results in a floor that can have either a smooth creamy look or a more terrazzo-like surface. Sika publishes a guide to specifying polished concrete with color options, aggregate exposure, gloss level, and finish (available at <http://www.scofield.com/tdbpdf/brochures/SCOFIELD-Formula-One-Specification-Guide.pdf>).

Sika Formula One™ Concrete Dye is used as part of the Sika® Formula One™ Polished Concrete system. This liquid dye concentrate is added to acetone on the jobsite and is ready to use in minutes, creating colorful, jewel-like floors.



AVAILABLE PRODUCTS

SIKA®

- Sika® Formula One™ Liquid Dye Concentrate
- Sika® Formula One™ Lithium Densifier
- Sika® Formula One™ Guard-W
- Sika® Formula One™ Finish Coat

AMTRAK STATION Older, heavily trafficked slabs can often be given a fresh look and extended service life using Sika® Formula One™ Lithium Densifier MP and Sika® Formula One™ Finish Coat. Choices for aggregate exposure and polish options provide versatility to the designer.



PERRYSBURG SCHOOL One of the most requested color choices, the stain-resistant black floor for the cafeteria and hallways of this intermediate school were achieved using Sika® Formula One™ Lithium Densifier MP, Sika® Formula One™ Guard-W and Sika® Formula One™ Liquid Dye Concentrate in "Black".



ALEXANDRIA CENTER A smooth, consistent gray finish for their office floors was requested by this client. Their vision was achieved using Sika® Formula One™ Lithium Densifier MP, Sika® Formula One™ Finish Coat and Sika® Formula One™ Liquid Dye Concentrate in "Concrete Gray".



LEBANON ELEMENTARY The vibrant colors of Sika® Formula One™ Liquid Dye Concentrate in "Bahama Blue", "Ponderosa", and "Aztec Red" made learning fun and maintenance a breeze at this elementary school.

PROTECTION

SIKA CURING AND SEALING products are designed to protect the surface and enhance the appearance of decorative colored and uncolored concrete. They include solvent-based and water-based curing compounds and sealers, water repellents, and installed floor protection. For maximum results, the complete system should be used.

The first line of defense for any decorative concrete floor or hardscape is a compatible concrete sealer. Sika's solvent-based curing compounds and sealers are the perfect protection option for many projects. As a curing compound, they aid in the development of the designed concrete strength, and retain water in the concrete to promote proper cement hydration. The use of curing compounds and sealers can help minimize unwanted effects such as surface and shrinkage cracking, and allow for the maximum potential of abrasion resistance of the concrete.

As a sealer, solvent-based curing compounds and sealers penetrate most concrete surfaces easily, enhance the color of integrally colored concrete, and are long lasting. They provide a fast cure rate, and an extended range of application limitations regarding ambient conditions. Sika curing and sealing products are available in several formulations to comply with regional air quality limits and regulations.

Water-based curing compounds and sealers perform the same curing function as solvent-based curing compounds and sealers. As a sealer, they can produce both a low sheen and high gloss appearance on the concrete surface, with little or no odor. Ideal for both interior or exterior applications, they can also be pigmented. Sika water-based curing compounds and sealers are low VOC.

AVAILABLE PRODUCTS

SCOFIELD®

- SCOFIELD® Cureseal™ 700
- SCOFIELD® Cureseal™ 350
- SCOFIELD® Selectseal™ Plus
- SCOFIELD® Cureseal-W™
- SCOFIELD® Repello® FPS
- LITHOCHROME® Colorwax™
- SCOFIELD® Proguard™ Duracover™

BUTTERFIELD COLOR®

- Clear Guard® Cure and Seal
- Clear Guard® PRO 350® Cure and Seal
- Clear Guard® H2O Water-Based Cure and Seal
- Clear Guard® H2O Wet Look Water-Based Sealer
- Clear Guard® First Seal®

SIKA INSTALLED FLOOR PROTECTION Proguard™ Duracover™ is a flexible, durable material that will protect interior flooring such as decorative concrete, resinous flooring, ceramic tile, terrazzo, pavers, wood, and composite floors from harsh construction environments both before and after installation. Proguard™ Duracover™ can be easily removed at the completion of the project, requiring minimal clean up.



SOLVENT-BASED SEALERS deliver excellent protection while enriching the color of concrete.



PROGUARD™ DURACOVER™ provides protection from construction traffic, equipment, gypsum wall board, dust and other construction related materials. It resists oil and petroleum-based compounds and high pH compounds, and will not scratch wood, ceramic tile, or other finished floor systems.



CONCRETE CURING COMPOUNDS AND CURE/SEALERS aid in the development of the designed concrete strength. They retain water in the concrete to promote proper cement hydration. The use of cures and sealers can help minimize unwanted cracking, such as surface cracking and shrinkage cracking, and allow for the maximum potential of abrasion resistance of the concrete.

CONCRETE ADMIXTURES

Concrete design begins with the proper proportioning of cement, water, and aggregate. Design of concrete, however, is optimized for value, workability, and performance with the addition of chemical and mineral admixtures. The foundation of Sika was built in 1910 with its first concrete admixture - it is no surprise that Sika is also the world's largest and most trusted concrete products manufacturer.

Below are some of the products available to enhance concrete placement, performance, and long-term durability.

SIKA VISCOCRETE® REDUCERS - WATER REDUCERS

- Increase overall strength
- Lower permeability
- Ease of placement

SIKACRETE® M-100 - METAKAOLIN

- Increased early and later age strengths
- Reduced permeability
- Improved concrete performance in freeze thaw conditions
- Produces lighter color concrete due to its creamy white color

SIKA VISCOFLOW® SERIES - WORKABILITY RETAINERS

- Increase slump life
- Extended working time
- Improve surface quality
- Decrease segregation

SIKA RUGASOL® - SURFACE RETARDER

- Architectural quality, uniform appearance with original color and texture of aggregate without sandblasting
- No danger of acid residue from strong washing compounds
- Easy to apply, less supervision of field personnel, no expensive equipment required

SIKA STABILIZER 4R - VISCOSITY MODIFIER

- Enhances stability of concrete matrix integrity during high slump placements
- Reduces segregation and bleeding
- Improves surface finishability
- Increases cohesiveness of lean and harsh mix designs

SIKA CONTROL SERIES - SHRINKAGE REDUCTION/COMPENSATION

- Reduced shrinkage cracking
- Increase life span
- Lower repair costs

SIKA PERFIN SERIES - SURFACE ENHANCEMENT

- Concrete with minimal surface defects
- Improved aesthetics and uniformity of concrete surfaces
- Improved concrete smoothness
- Reduced labor needed for surface patching

QUESTIONS?

Give us a call or find us online for more information!

Phone: 1-800-325-9504

Website: usa.sika.com

ARCHITECTURAL FORMLINERS

Sika® Formliners provide an economical means for adding interest and visual appeal to almost any concrete structure. The desire for architectural concrete continues to grow in both the public and private sectors and the applications for Sika® formliners are limitless.

Sika® Formliners attach to almost any forming system or casting bed prior to concrete placement. Following normal placement practices and curing times, the forming system and liner are stripped leaving an architectural concrete finish. Sika offers a wide array of patterns and textures from which to choose. Patterns are available in a variety of sizes and depths to achieve the best visual effect. Sika® Formliners are also available in three grades in order to economically cast an architectural finish in concrete structures of any size, type, or budget. In combination with Scofield and Butterfield colors, Sika® Formliners are sure to enhance the look of any concrete structure.

HOW IT WORKS



SEALANTS FOR CONCRETE JOINT PROTECTION

Sikaflex®, Sikasil®, Sika Hydroflex® Joint Sealants

- Used for isolated joints with no traffic
- 1 - Component, no mixing required
- Self-leveling, pourable options
- Can be applied to damp concrete 1 hour after getting wet
- Can be applied to green concrete 24 hours after pour
- Accelerated curing

SIKA FULL RANGE SOLUTIONS FOR CONSTRUCTION:



WATERPROOFING



CONCRETE



REFURBISHMENT



SEALING AND BONDING



FLOORING



ROOFING

All sales of Sika products are subject to Sika's current Terms and Conditions of Sale available at usa.sika.com or by calling 800-325-9504. Prior to each use of any Sika product, the user must always read and follow the warnings and instructions on the product's most current Product Data Sheet, product label and Safety Data Sheet, which are available at usa.sika.com or by calling Technical Services at 800-325-9504. Nothing contained in any Sika materials relieves the user of the obligation to read and follow the warnings and instructions for each Sika product as set forth in the current Product Data Sheet, product label and Safety Data Sheet prior to product use.

The sale of all Sika products are subject to the following Limited Warranty:

LIMITED MATERIAL WARRANTY

SIKA warrants this product for one year from date of installation to be free from manufacturing defects and to meet the technical properties on the current Product Data Sheet if used as directed within shelf life. User determines suitability of product for intended use and assumes all risks. Buyer's sole remedy shall be limited to the purchase price or replacement of product exclusive of labor or cost of labor.

NO OTHER WARRANTIES EXPRESS OR IMPLIED SHALL APPLY INCLUDING ANY WARRANTY OF MERCHANTABILITY OR FITNESS FOR A PARTICULAR PURPOSE. SIKA SHALL NOT BE LIABLE UNDER ANY LEGAL THEORY FOR SPECIAL OR CONSEQUENTIAL DAMAGES. SIKA SHALL NOT BE RESPONSIBLE FOR THE USE OF THIS PRODUCT IN A MANNER TO INFRINGE ON ANY PATENT OR ANY OTHER INTELLECTUAL PROPERTY RIGHTS HELD BY OTHERS.

Contact Sika:

Phone: 1-800-325-9504

Website: usa.sika.com

Our most current General Sales Conditions shall apply.
Please consult the Product Data Sheets prior to any use and processing.

Sika Corporation

201 Polito Avenue
Lyndhurst, NJ 07071
Phone: 201-933-8800
Fax: 201-933-6225

BUILDING TRUST

