

SIKAFUKO[®] FABRICATION -

INSTALLATION GUIDE

GENERAL

SikaFuko[®] is a range of specially designed solid core PVC Injection Hose Systems which can be installed in concrete construction joints to waterproof them and also to seal any cracks or voids in the joint areas. The SikaFuko[®] systems seal joints so that they are watertight and also they provide a complete maintenance solution if any leaks occur in the future. The SikaFuko[®] range consists of three types of injection hose, with easy, safe and fast installation, simplifying the work on site and ensuring watertight joints.

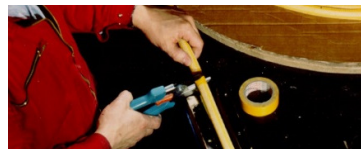
TYPICAL APPLICATIONS INCLUDE:

- SikaFuko injection hose
- PVC vent ends – green & transparent
- Shrink on sleeves
- Connecting nozzles
- Closure plugs
- Insulating tape & rapid glue



FABRICATION INSTRUCTIONS

- Secure the area of the SikaFuko[®] injection hose to be cut with insulating tape
- SikaFuko[®] injection hose is to be cut with heavy-duty clippers and to be cut to the desired length
- The PVC installation – and vent ends, green and transparent, are to be cut to the desired length
Rapid glue is to be applied to the connecting nozzle to ensure a secure
- Connection of the SikaFuko[®] injection hose with the PVC vent ends.
- The SikaFuko[®] injection hose is to be slid over the connecting nozzle and fitted together so as to create a tight connection.

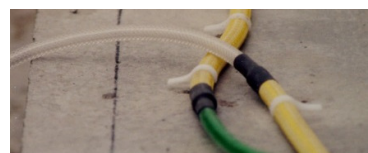
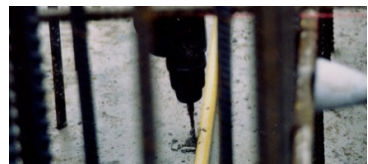
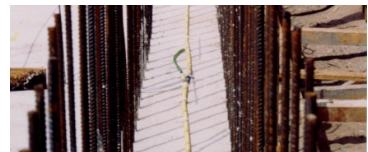
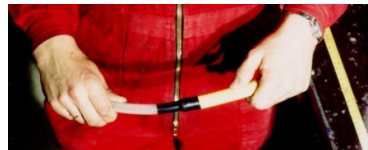


SIKAFUKO® FABRICATION - INSTALLATION GUIDE

BUILDING TRUST



- Shrink sleeve is to be installed in the middle, covering connection between the PVC-vent end and the ikaFuko® injection hose...
- ...and is heated by a hot air machine.
- The SikaFuko® injection hose is ready for installation
- Installation tools
- Standard placement of the hose
- Drilling of holes for the installation
- Example of how hose is to be fixed
- Method of overlapping vent ends



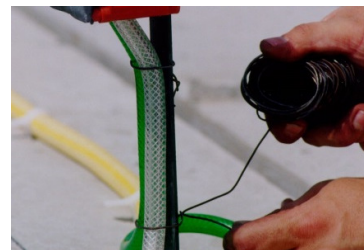
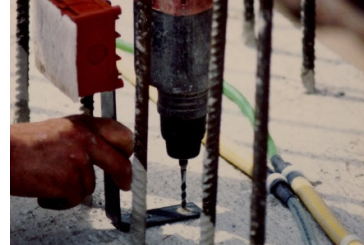
SIKAFUKO® FABRICATION - INSTALLATION GUIDE

BUILDING TRUST



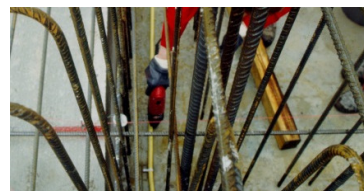
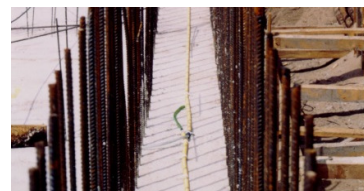
INSTALLATION DETAILS

- Line-up SikaFuko® junction box with the foam material side facing the inside, which will be secured later to the form. Install bracket with two plugs into drilling holes of 6mm diameter. Bend the box approximately 5mm outwards.
- For storing vent ends, drill a hole into the bottom of the junction box. For injection hose SikaFuko® VT-1 – 14mm diameter, for injection hose SikaFuko® VT-2 – 18mm diameter. Insert the PVC vent ends into the openings in the box and insert a closure plug in each of the open vent ends.
- To avoid any movement or slippage, tie the vent ends with wire at the metal bracket
- Build the form. The SikaFuko junction box is fixed with pressure against the inside corner of the form.



FLOOR TO WALL CONNECTION

- Installation of the SikaFuko® injection hose in a floor to wall connection
- Installation of the SikaFuko® injection hose in the area of a wall corner



SIKA Corporation - US
201 Polito Avenue
Lyndhurst, NJ 07071
United States

For More Information Contact
SIKA - St. Louis Sales Office
3400 Tree Court Industrial Blvd.
63122, St. Louis, MO

www.usa.sika.com
Phone: 1-800-325-9504
Fax: 800-551-5145