

**LaHabra®**



# **Pebbletex CI-DCA with MaxGrip Veneer Adhesive**

Typical 2D Details

**BUILDING TRUST**



# Pebbletex CI-DCA with MaxGrip Veneer Adhesive

## Typical 2D Details

### Table of Contents

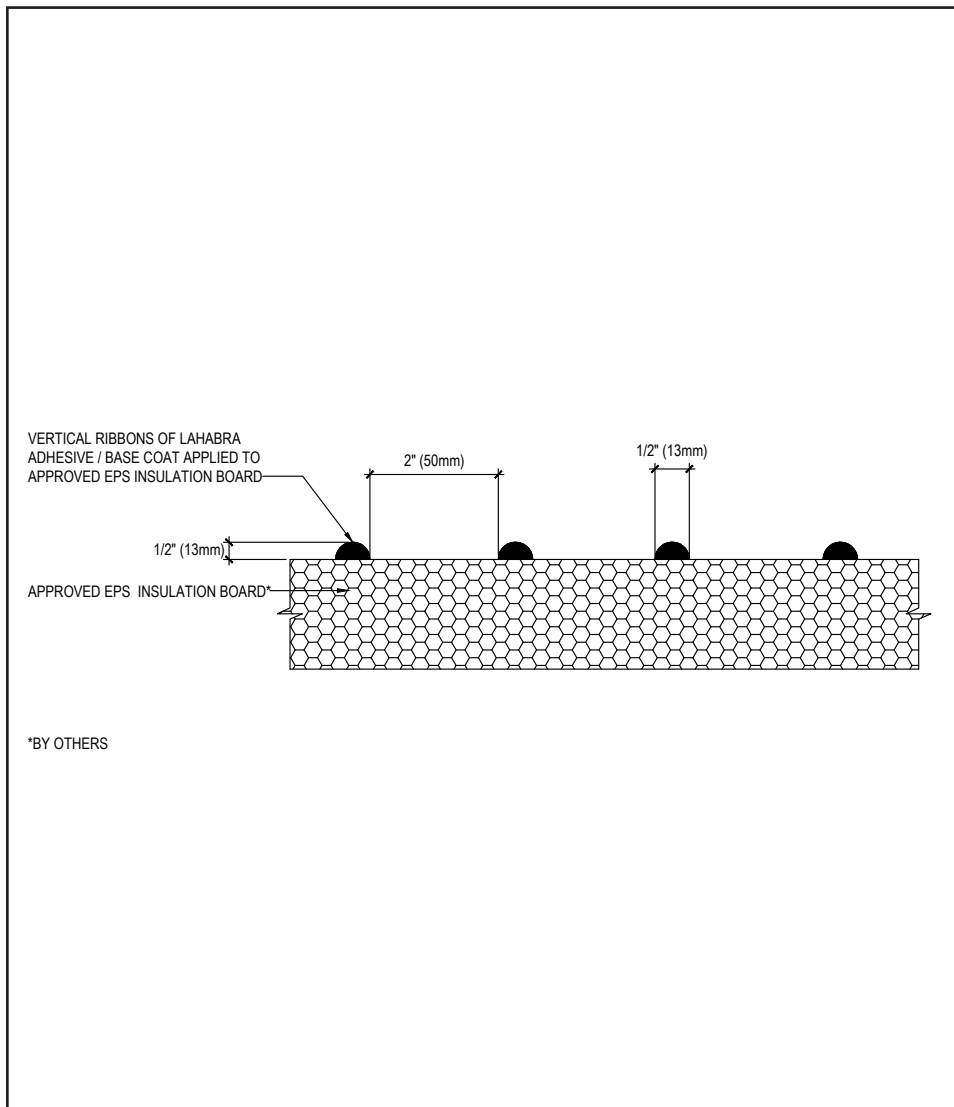
1. Pebbletex CI-DCA Adhesive Profile	14. Window Head with Weep Tubes (Flush)
2. Application	15. Window Head with Diverter Track (Flush)
3. Isometric	16. Window Jamb (Flush)
4. Isometric over CMU	17. Window Sill (Flush)
5. Outside Corner	18. Window Head (Recessed)
6. Pipe Penetration	19. Window Jamb (Recessed)
7. Vertical Expansion Joint	20. Window Sill (Recessed)
8. Expansion Joint at Change in Substrate	21. Flanged Window Head
9. Expansion Joint at Floor Line	22. Flanged Window Jamb
10. Drainage at Floor Line	23. Flanged Window Sill
11. Termination at Foundation	24. Coping
12. Termination at Foundation (Flush)	25. Hand Rail Attachment
13. Window Head (Flush)	26. Transition Between Veneer and Acrylic Finish

### Notes:

- **The details within are the latest recommendations and are represent in good faith by Sika Corporation US (hereinafter Sika). The details are subject to change without notice. Sika accepts no liability for the end use of the details. For conditions not shown, consult Sika for review of specific details.**
- **Install Sika materials in accordance with current installation instructions.**
- **Unsatisfactory conditions shall be reported to the General Contractor and corrected before the application of Sika products.**
- **Follow ICF manufacturer's specifications for proper ICF installation.**

# Pebbletex CI-DCA with MaxGrip Veneer Adhesive

## TYPICAL PEBBLETEX CI-DCA ADHESIVE PROFILE



- Apply mixed base coat to entire surface of insulation board using a stainless steel trowel with 1/2" x 1/2" (13 mm x 13 mm) notches spaced 2" (50 mm) apart. Ribbons of adhesive must be applied parallel to the 2' (610 mm) dimension of the EPS insulation board to ensure they are vertical when the EPS insulation board is applied to the substrate.
- Set EPS insulation board into place and apply pressure over entire surface of board to ensure positive uniform contact and high initial grab. Do not slide board into place.

01 0724

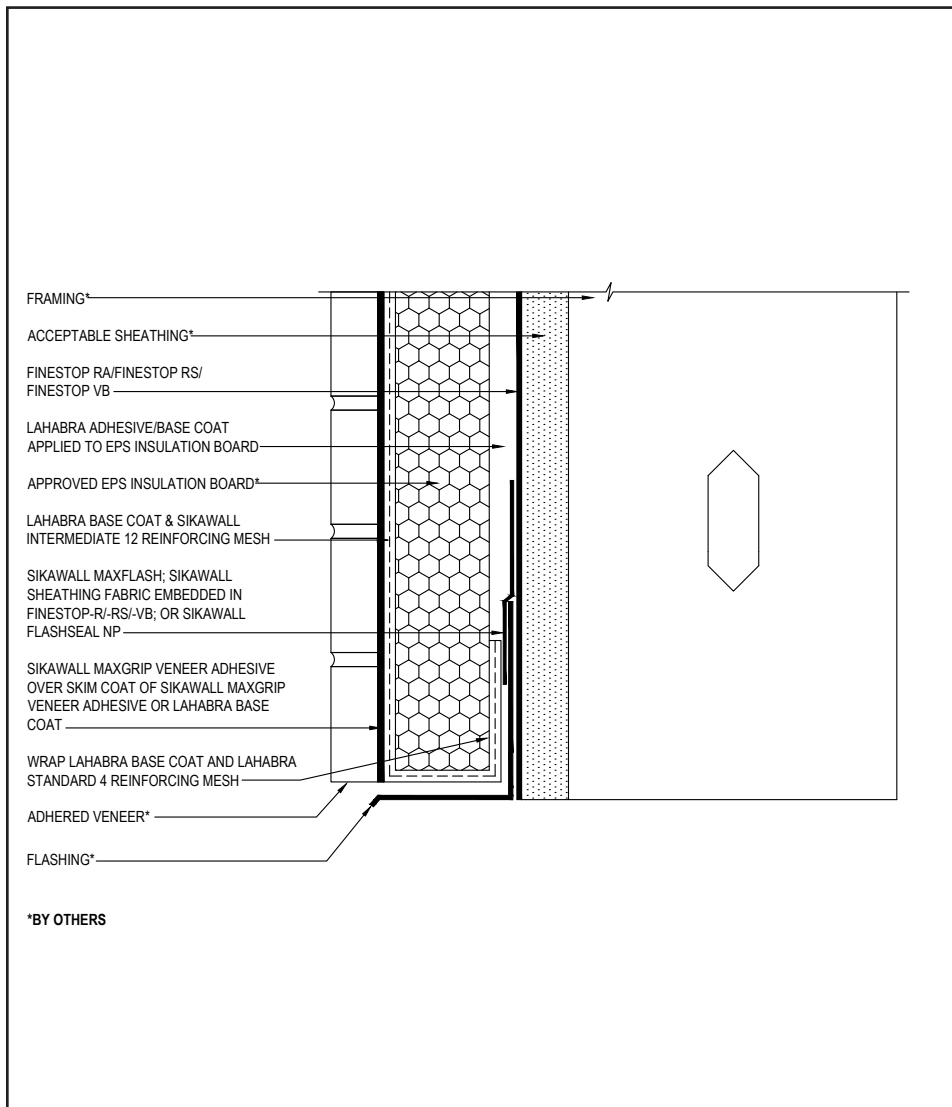
(\*NOTE: BY OTHERS)

The details within are the latest recommendations and are represented in good faith by Sika Corporation US (hereinafter Sika). The details are subject to change without notice. Sika accepts no liability for the end use of the details. For conditions not shown, consult Sika for review of specific details.

- Install Sika materials in accordance with current installation instructions.
- Unsatisfactory conditions shall be reported to the General Contractor and corrected before the application of Sika products.

# Pebbletex CI-DCA with MaxGrip Veneer Adhesive

## TYPICAL APPLICATION



- All terminations must be fully encapsulated with mesh reinforced base coat. Prebackwrap both the vertical and horizontal terminations. Extend reinforcing mesh a minimum of 2½" onto back of insulation board.
- Ensure a means for drainage is provided at system terminations.
- Adhered veneer shall not exceed 15 lbs. (6.8 kg) per sq.ft.

02 0724

(\*NOTE: BY OTHERS)

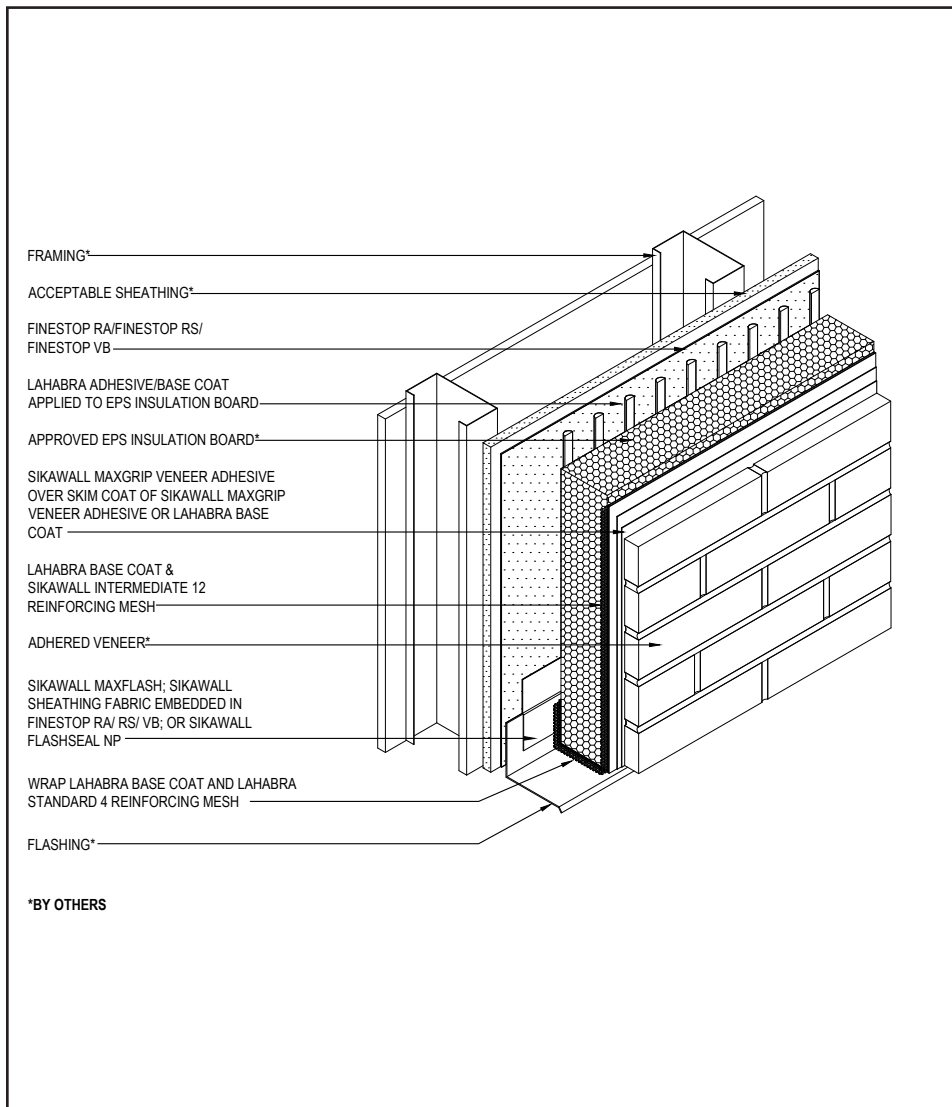
The details within are the latest recommendations and are represented in good faith by Sika Corporation US (hereinafter Sika). The details are subject to change without notice. Sika accepts no liability for the end use of the details. For conditions not shown, consult Sika for review of specific details.

- Install Sika materials in accordance with current installation instructions.
- Unsatisfactory conditions shall be reported to the General Contractor and corrected before the application of Sika products.



## Pebbletex CI-DCA with MaxGrip Veneer Adhesive

### TYPICAL ISOMETRIC



- All terminations must be fully encapsulated with mesh reinforced base coat. Prebackwrap both the vertical and horizontal terminations. Extend reinforcing mesh a minimum of 2½" onto back of insulation board.
- Ensure a means for drainage is provided at system terminations.
- Adhered veneer shall not exceed 15 lbs. (6.8 kg) per sq.ft.

03 0724

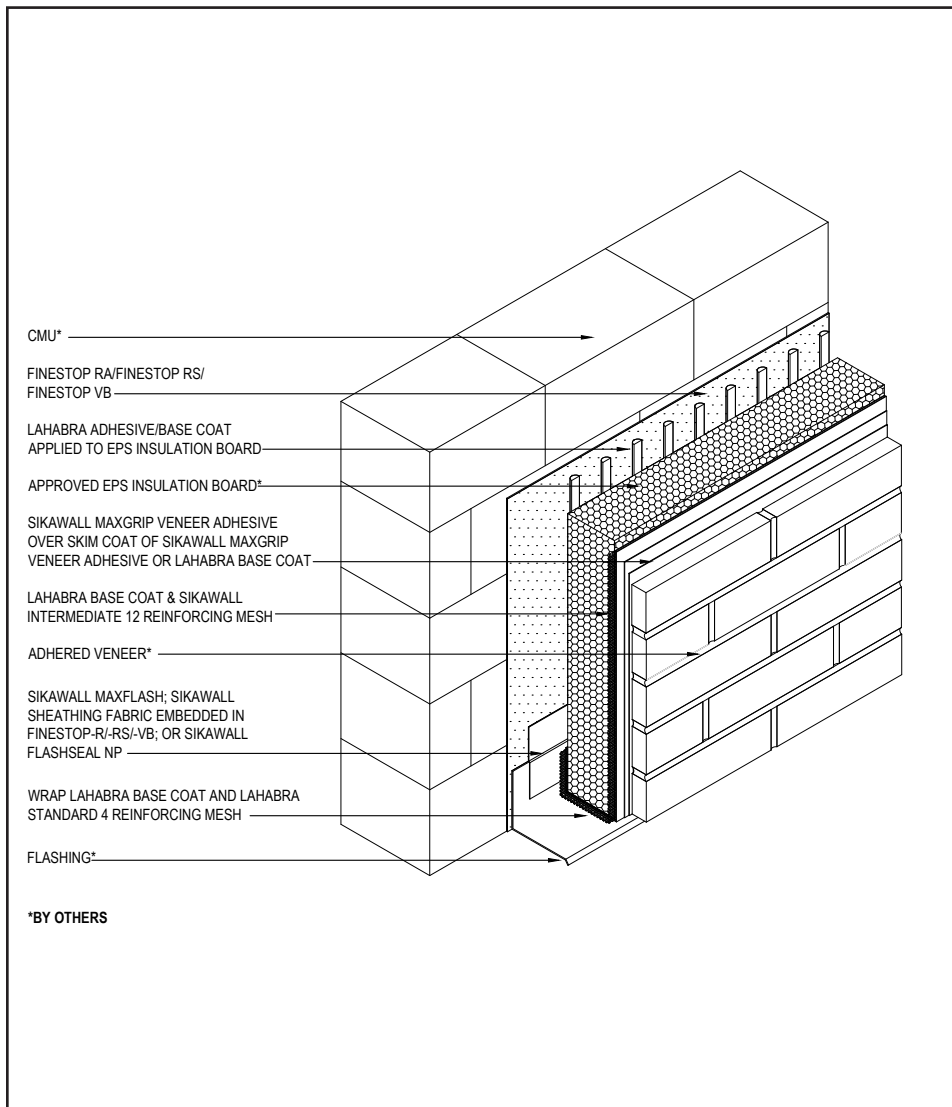
(\*NOTE: BY OTHERS)

The details within are the latest recommendations and are represented in good faith by Sika Corporation US (hereinafter Sika). The details are subject to change without notice. Sika accepts no liability for the end use of the details. For conditions not shown, consult Sika for review of specific details.

- Install Sika materials in accordance with current installation instructions.
- Unsatisfactory conditions shall be reported to the General Contractor and corrected before the application of Sika products.

## Pebbletex CI-DCA with MaxGrip Veneer Adhesive

### TYPICAL ISOMETRIC OVER CMU



- All terminations must be fully encapsulated with mesh reinforced base coat. Prebackwrap both the vertical and horizontal terminations. Extend reinforcing mesh a minimum of 2½" onto back of insulation board.
- Ensure a means for drainage is provided at system terminations.
- Adhered veneer shall not exceed 15 lbs. (6.8 kg) per sq.ft.

04 0724

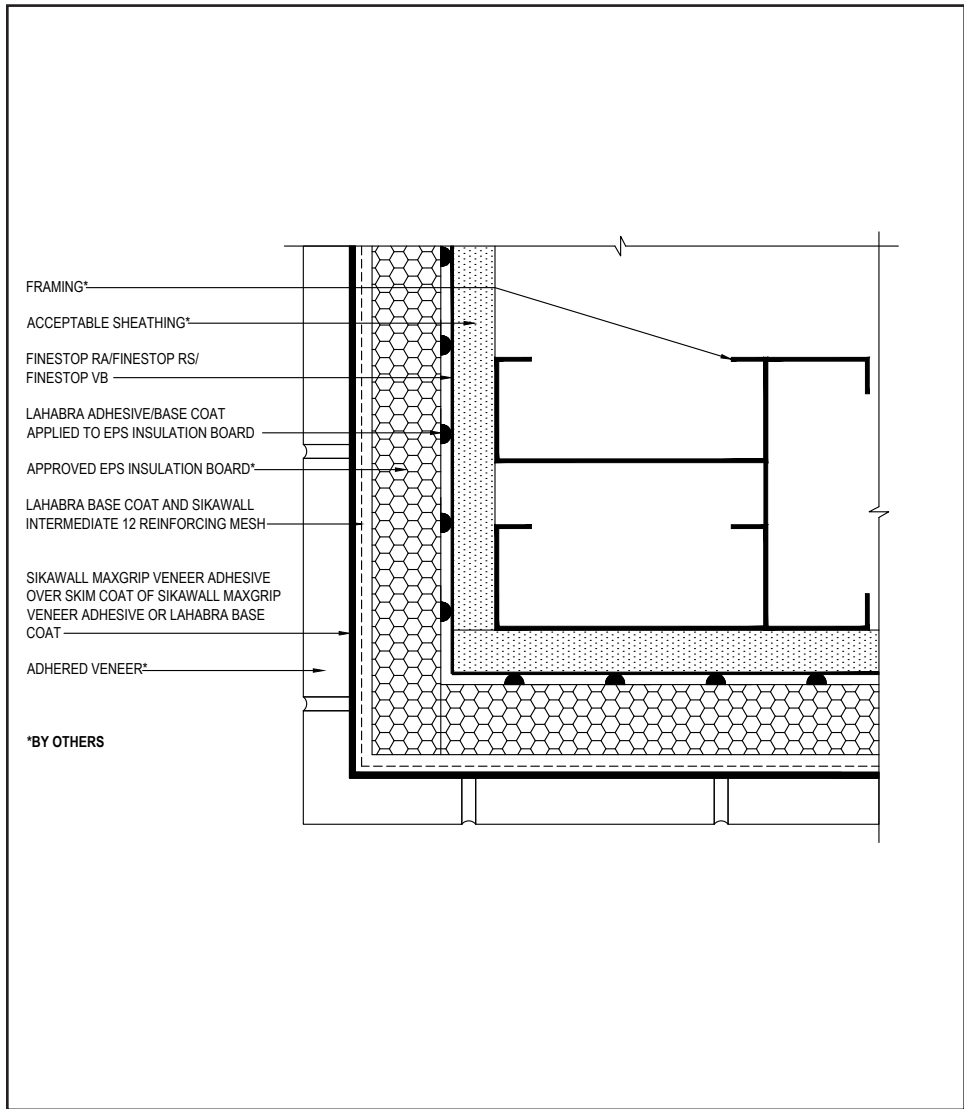
(\*NOTE: BY OTHERS)

The details within are the latest recommendations and are represented in good faith by Sika Corporation US (hereinafter Sika). The details are subject to change without notice. Sika accepts no liability for the end use of the details. For conditions not shown, consult Sika for review of specific details.

- Install Sika materials in accordance with current installation instructions.
- Unsatisfactory conditions shall be reported to the General Contractor and corrected before the application of Sika products.

# Pebbletex CI-DCA with MaxGrip Veneer Adhesive

## TYPICAL OUTSIDE CORNER



- SikaWall Intermediate 12 reinforcing mesh is lapped a minimum of 8" (203 mm) around corners.

05 0724

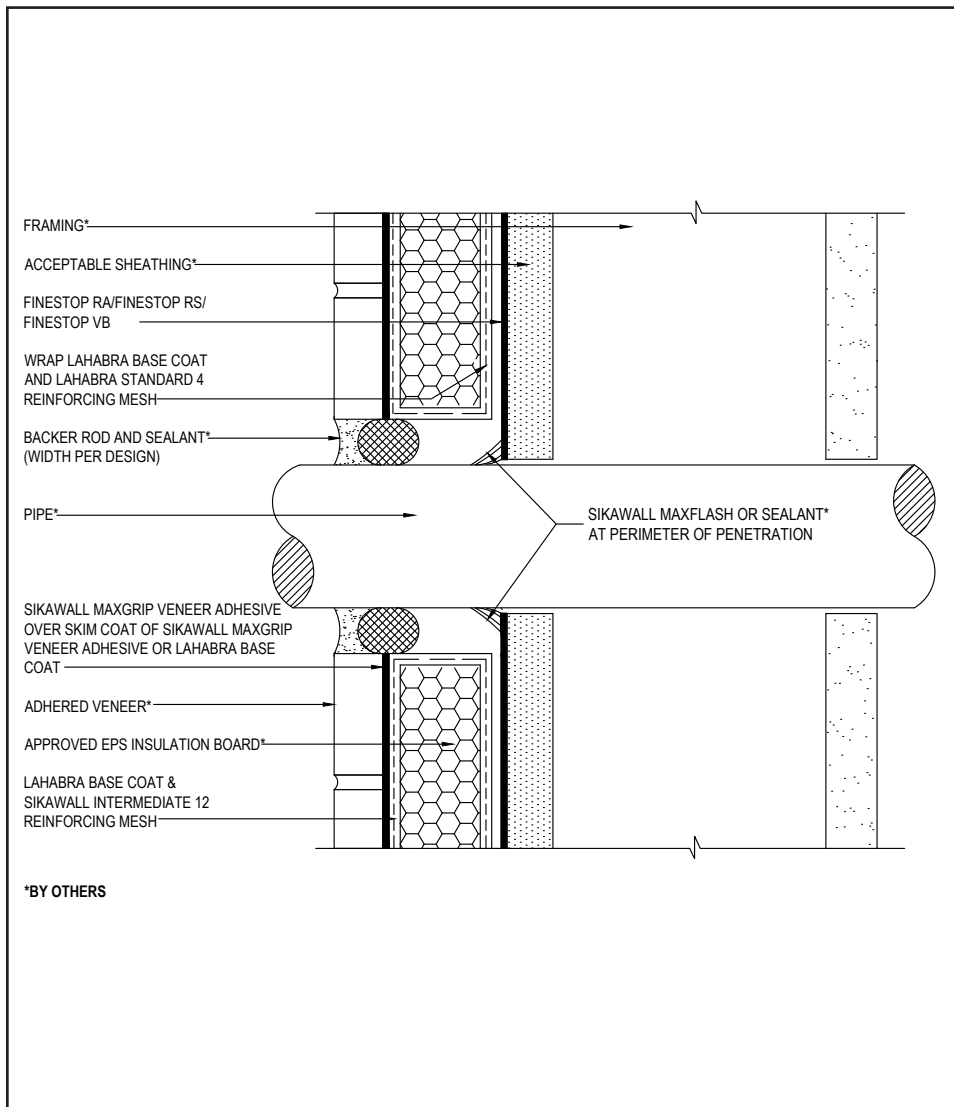
(\*NOTE: BY OTHERS)

The details within are the latest recommendations and are represented in good faith by Sika Corporation US (hereinafter Sika). The details are subject to change without notice. Sika accepts no liability for the end use of the details. For conditions not shown, consult Sika for review of specific details.

- Install Sika materials in accordance with current installation instructions.
- Unsatisfactory conditions shall be reported to the General Contractor and corrected before the application of Sika products.

# Pebbletex CI-DCA with MaxGrip Veneer Adhesive

## TYPICAL PIPE PENETRATION



- All terminations must be fully encapsulated with mesh reinforced base coat. Extend reinforcing mesh a minimum of 2½" onto back of insulation board.
- Ensure all penetrations into the system are properly sealed.
- Provide continuous air seal around perimeter of penetration prior to EPS insulation board application.

06 0724

(\*NOTE: BY OTHERS)

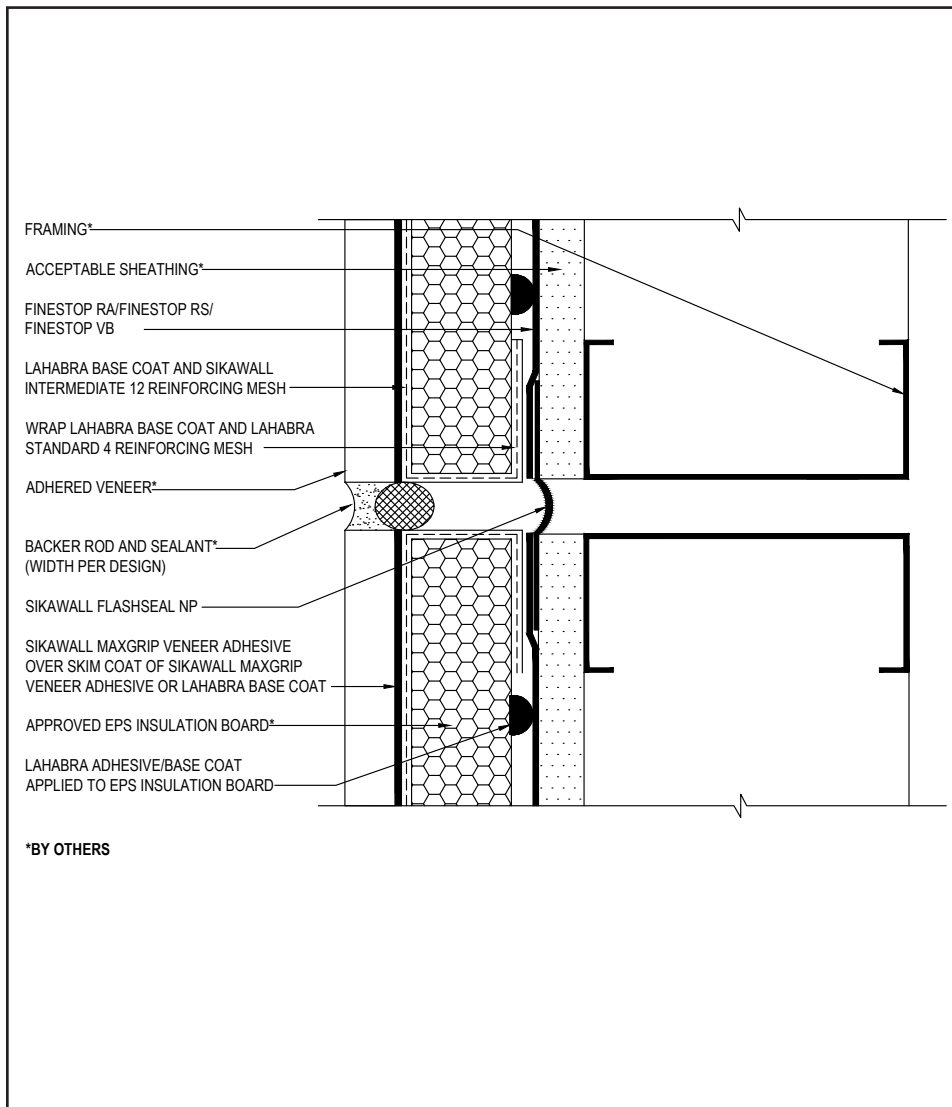
The details within are the latest recommendations and are represented in good faith by Sika Corporation US (hereinafter Sika). The details are subject to change without notice. Sika accepts no liability for the end use of the details. For conditions not shown, consult Sika for review of specific details.

- Install Sika materials in accordance with current installation instructions.
- Unsatisfactory conditions shall be reported to the General Contractor and corrected before the application of Sika products.



# Pebbletex CI-DCA with MaxGrip Veneer Adhesive

## TYPICAL VERTICAL EXPANSION JOINT



07 0724

(\*NOTE: BY OTHERS)

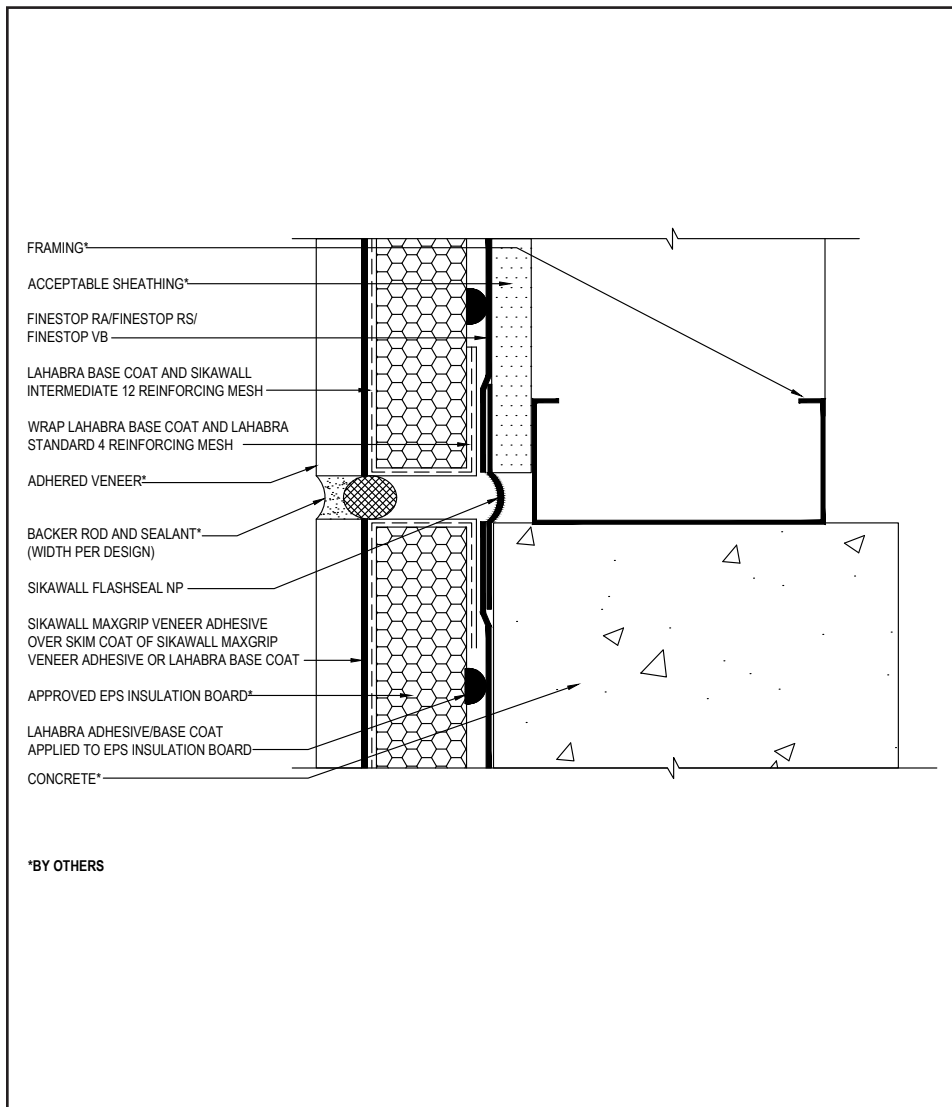
- All terminations must be fully encapsulated with mesh reinforced base coat. Prebackwrap both the vertical and horizontal terminations. Extend reinforcing mesh a minimum of 2½" onto back of insulation board.
- Typical locations for system expansion joints are at building expansion joints, at prefabricated panel joints, floor lines of wood frame construction or where slip tracks are used in steel frame construction, where substrates change and where structural movement is anticipated. It is the sole responsibility of the project design team, including the architect, engineer, etc., to ultimately determine specific expansion joint placement, width and design. Detail specific locations in construction drawings.
- Ensure drainage plane is continuous and unobstructed at expansion joint.
- Provide sufficient slack in SikaWall Flash Seal NP at expansion joint to allow for movement.
- Reference *Acceptable Sealants for use with LaHabra Wall Systems* Technical Bulletin for a list of sealants.

The details within are the latest recommendations and are represented in good faith by Sika Corporation US (hereinafter Sika). The details are subject to change without notice. Sika accepts no liability for the end use of the details. For conditions not shown, consult Sika for review of specific details.

- Install Sika materials in accordance with current installation instructions.
- Unsatisfactory conditions shall be reported to the General Contractor and corrected before the application of Sika products.

## Pebbletex CI-DCA with MaxGrip Veneer Adhesive

### TYPICAL EXPANSION JOINT AT CHANGE IN SUBSTRATE



- All terminations must be fully encapsulated with mesh reinforced base coat. Prebackwrap both the vertical and horizontal terminations. Extend reinforcing mesh a minimum of 2½" onto back of insulation board.
- Ensure drainage plane is continuous and unobstructed at expansion joint.
- Typical locations for system expansion joints are at building expansion joints, at prefabricated panel joints, floor lines of wood frame construction or where slip tracks are used in steel frame construction, where substrates change and where structural movement is anticipated. It is the sole responsibility of the project design team, including the architect, engineer, etc., to ultimately determine specific expansion joint placement, width and design. Detail specific locations in construction drawings.
- Provide sufficient slack in SikaWall Flash Seal NP at expansion joint to allow for movement.
- Reference *Acceptable Sealants for use with LaHabra Wall Systems* Technical Bulletin for a list of sealants.

08 0724

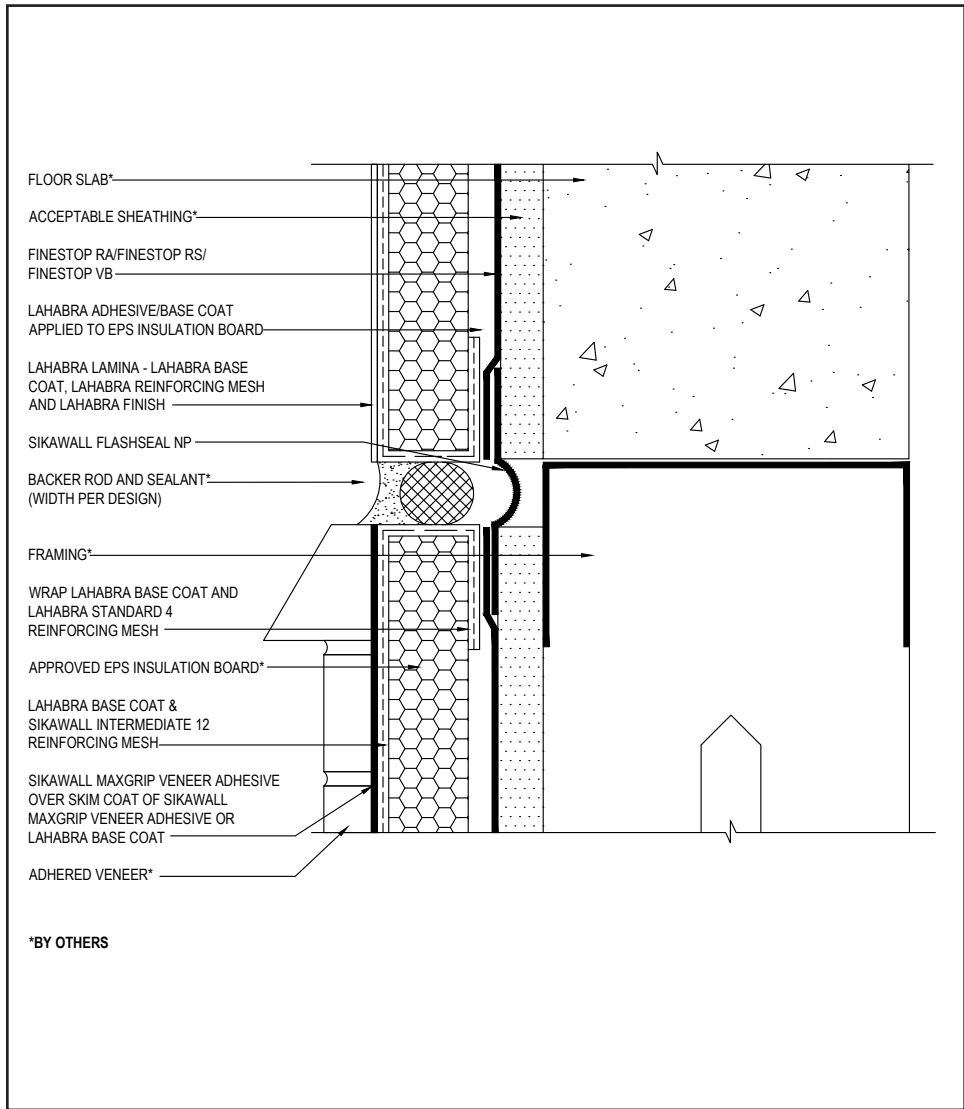
(\*NOTE: BY OTHERS)

The details within are the latest recommendations and are represented in good faith by Sika Corporation US (hereinafter Sika). The details are subject to change without notice. Sika accepts no liability for the end use of the details. For conditions not shown, consult Sika for review of specific details.

- Install Sika materials in accordance with current installation instructions.
- Unsatisfactory conditions shall be reported to the General Contractor and corrected before the application of Sika products.

# Pebbletex CI-DCA with MaxGrip Veneer Adhesive

## TYPICAL EXPANSION JOINT AT FLOOR LINE



09 0724

(\*NOTE: BY OTHERS)

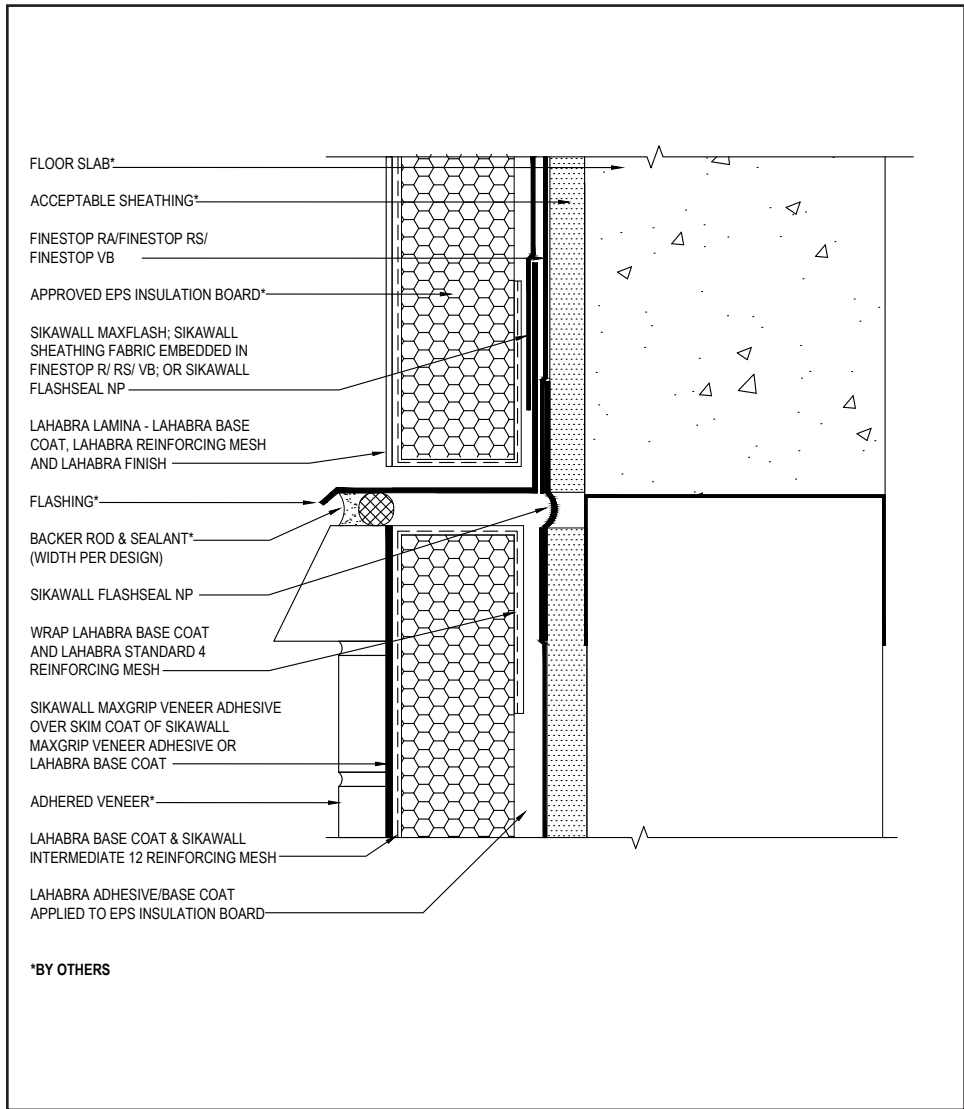
- All terminations must be fully encapsulated with mesh reinforced base coat. Prebackwrap both the vertical and horizontal terminations. Extend reinforcing mesh a minimum of 2½" onto back of insulation board.
- Typical locations for system expansion joints are at building expansion joints, at prefabricated panel joints, floor lines of wood frame construction or where slip tracks are used in steel frame construction, where substrates change and where structural movement is anticipated. It is the sole responsibility of the project design team, including the architect, engineer, etc., to ultimately determine specific expansion joint placement, width and design. Detail specific locations in construction drawings.
- It is recommended that a means for drainage is provided at every third floor. (See Typical Drainage At Floorline detail).
- Do not apply finish to areas that will receive sealant.
- Ensure drainage plane is continuous and unobstructed at expansion joint.
- Reference *Acceptable Sealants for use with LaHabra Wall Systems* Technical Bulletin for a list of sealants.

The details within are the latest recommendations and are represented in good faith by Sika Corporation US (hereinafter Sika). The details are subject to change without notice. Sika accepts no liability for the end use of the details. For conditions not shown, consult Sika for review of specific details.

- Install Sika materials in accordance with current installation instructions.
- Unsatisfactory conditions shall be reported to the General Contractor and corrected before the application of Sika products.

# Pebbletex CI-DCA with MaxGrip Veneer Adhesive

## TYPICAL DRAINAGE AT FLOOR LINE



- All terminations must be fully encapsulated with mesh reinforced base coat. Prebackwrapping is recommended at drainage terminations. Extend reinforcing mesh a minimum of 2½" onto back of insulation board.
- Do not apply finish to areas that will receive sealant.
- Typical locations for system expansion joints are at building expansion joints, at prefabricated panel joints, floor lines of wood frame construction or where slip tracks are used in steel frame construction, where substrates change and where structural movement is anticipated. It is the sole responsibility of the project design team, including the architect, engineer, etc., to ultimately determine specific expansion joint placement, width and design. Detail specific locations in construction drawings.
- It is recommended that a means for drainage is provided at every third floor.
- Provide sufficient slack in the SikaWall Flash Seal NP at expansion joint to allow for movement.
- Reference *Acceptable Sealants for use with LaHabra Wall Systems* Technical Bulletin for a list of sealants.

10 0724

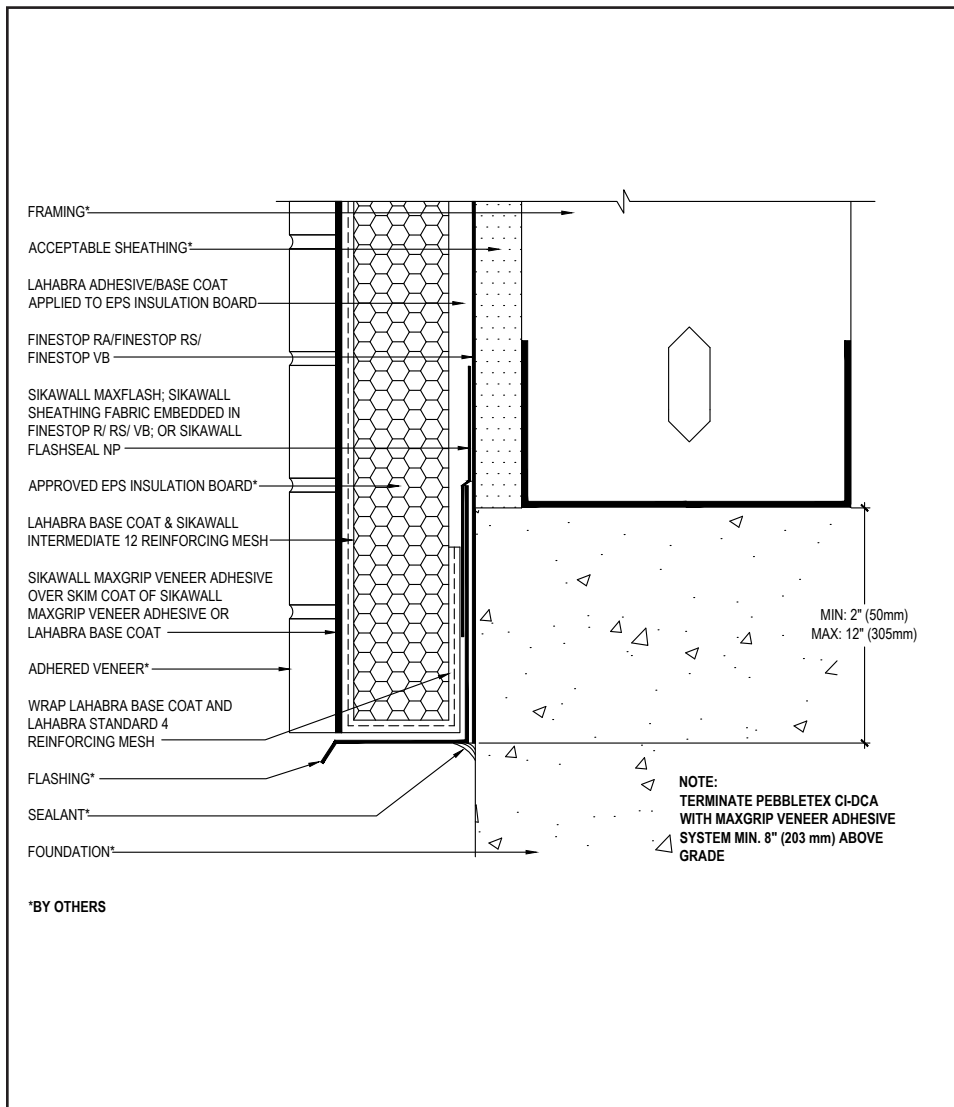
(\*NOTE: BY OTHERS)

The details within are the latest recommendations and are represented in good faith by Sika Corporation US (hereinafter Sika). The details are subject to change without notice. Sika accepts no liability for the end use of the details. For conditions not shown, consult Sika for review of specific details.

- Install Sika materials in accordance with current installation instructions.
- Unsatisfactory conditions shall be reported to the General Contractor and corrected before the application of Sika products.

## Pebbletex CI-DCA with MaxGrip Veneer Adhesive

### TYPICAL TERMINATION AT FOUNDATION



- All terminations must be fully encapsulated with mesh reinforced base coat. Prebackwrap both the vertical and horizontal terminations. Extend reinforcing mesh a minimum of 2½" onto back of insulation board.
- Ensure a means for drainage is provided at system termination at foundation.
- Terminate system a minimum of 6" (152 mm) above grade.
- Extend system a minimum of 2" (50 mm) and a maximum of 12" (305 mm) at the sole plate foundation transition.

11 0724

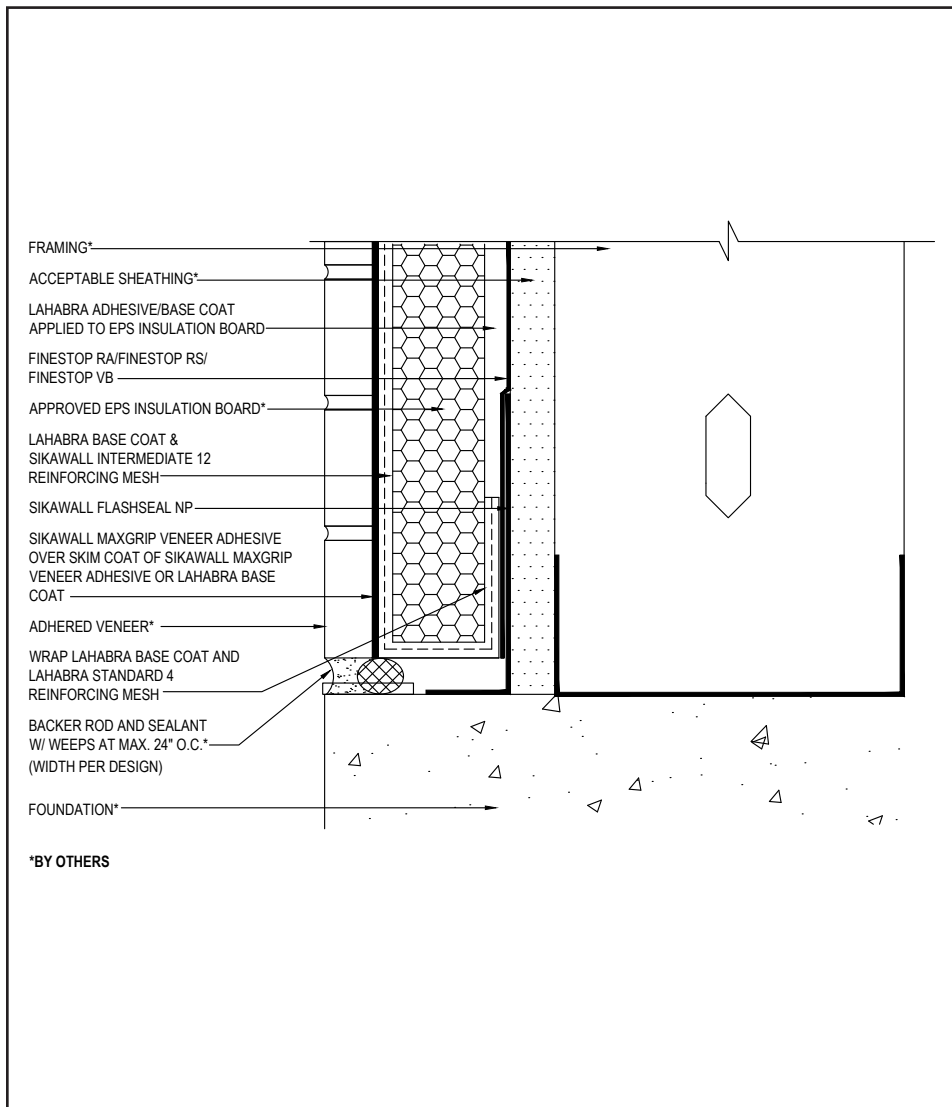
(\*NOTE: BY OTHERS)

The details within are the latest recommendations and are represented in good faith by Sika Corporation US (hereinafter Sika). The details are subject to change without notice. Sika accepts no liability for the end use of the details. For conditions not shown, consult Sika for review of specific details.

- Install Sika materials in accordance with current installation instructions.
- Unsatisfactory conditions shall be reported to the General Contractor and corrected before the application of Sika products.

# Pebbletex CI-DCA with MaxGrip Veneer Adhesive

## TYPICAL TERMINATION AT FOUNDATION (FLUSH)



- All terminations must be fully encapsulated with mesh reinforced base coat. Prebackwrap both the vertical and horizontal terminations. Extend reinforcing mesh a minimum of 2½" onto back of insulation board.
- Ensure a means for drainage is provided at system termination at foundation.
- Place weeps a minimum of 24" (610 mm) on center.
- Reference *Acceptable Sealants for use with LaHabra Wall System* Technical Bulletin for a list of sealants.

12 0724

(\*NOTE: BY OTHERS)

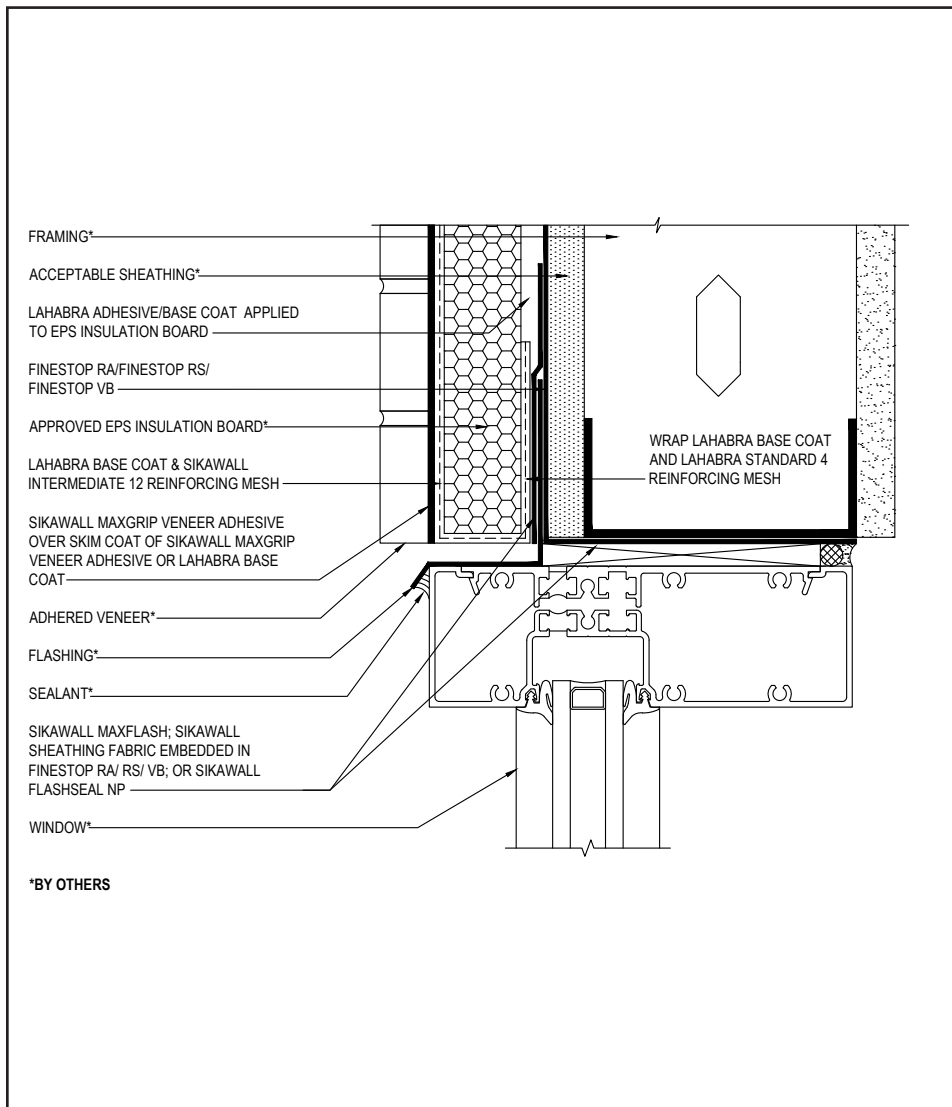
The details within are the latest recommendations and are represented in good faith by Sika Corporation US (hereinafter Sika). The details are subject to change without notice. Sika accepts no liability for the end use of the details. For conditions not shown, consult Sika for review of specific details.

- Install Sika materials in accordance with current installation instructions.
- Unsatisfactory conditions shall be reported to the General Contractor and corrected before the application of Sika products.



## Pebbletex CI-DCA with MaxGrip Veneer Adhesive

### TYPICAL WINDOW HEAD (FLUSH)



- All terminations must be fully encapsulated with mesh reinforced base coat. Prebackwrap both the vertical and horizontal terminations. Extend reinforcing mesh a minimum of 2½" onto back of insulation board.
- Ensure a means for drainage is provided at system terminations at all window, door and PTAC unit heads.
- Provide end-dams at flashing terminations.
- Prior to window and EPS installation, ensure water-resistive barrier is properly applied into the rough openings in accordance with LaHabra application guidelines and code requirements. Reference LaHabra Finestop published typical details.

13 0724

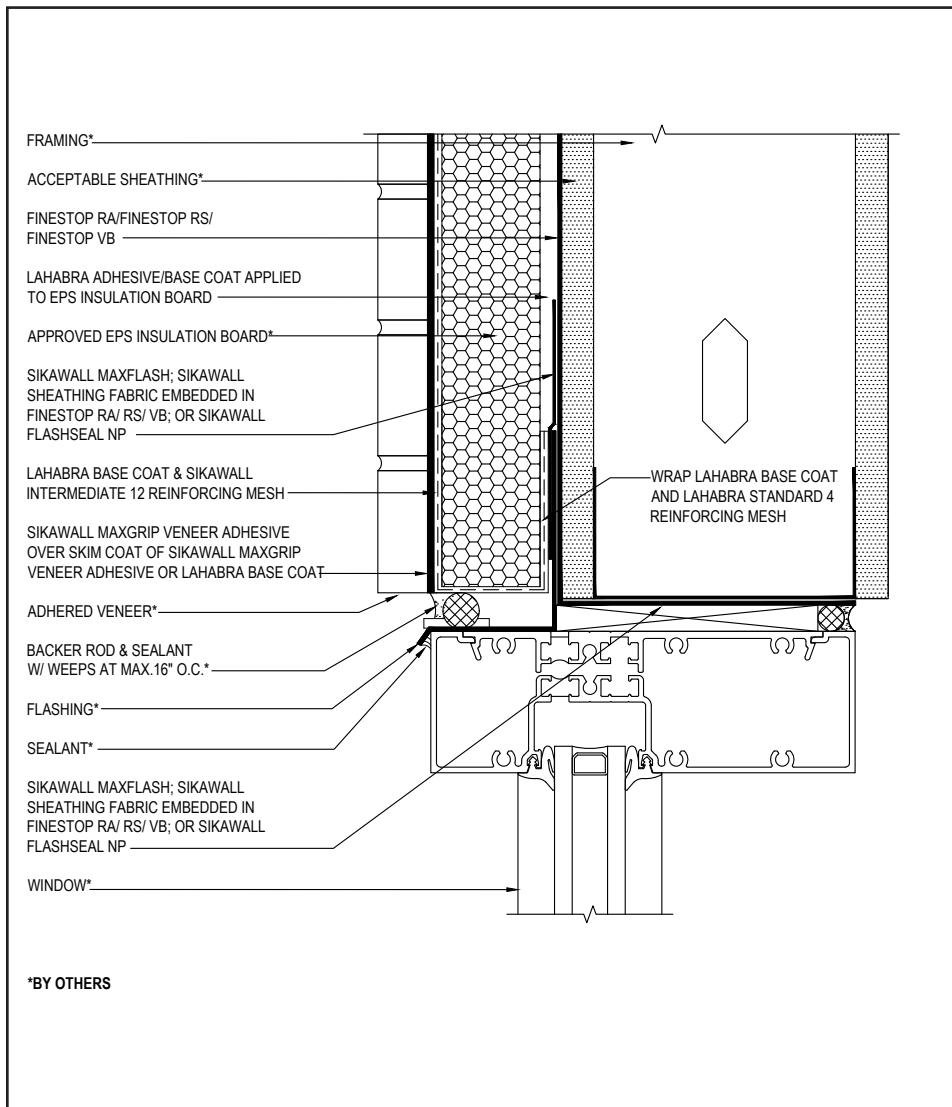
(\*NOTE: BY OTHERS)

The details within are the latest recommendations and are represented in good faith by Sika Corporation US (hereinafter Sika). The details are subject to change without notice. Sika accepts no liability for the end use of the details. For conditions not shown, consult Sika for review of specific details.

- Install Sika materials in accordance with current installation instructions.
- Unsatisfactory conditions shall be reported to the General Contractor and corrected before the application of Sika products.

## Pebbletex CI-DCA with MaxGrip Veneer Adhesive

### TYPICAL WINDOW HEAD WITH WEEP TUBES (FLUSH)



- All terminations must be fully encapsulated with mesh reinforced base coat. Prebackwrap both the vertical and horizontal terminations. Extend reinforcing mesh a minimum of 2½" onto back of insulation board.
- Ensure a means for drainage is provided at system terminations at all window, door and PTAC unit heads.
- Provide end-dams at flashing terminations.
- Place weeps a minimum of 16" (406 mm) on center.
- Prior to window and EPS installation, ensure water-resistive barrier is properly applied into the rough openings in accordance with LaHabra application guidelines and code requirements. Reference LaHabra Finestop published typical details.
- Reference *Acceptable Sealants for use with LaHabra Wall Systems* Technical Bulletin for a list of sealants.
- Consult window and sealant manufacturers to verify window installation, detailing and to ensure no water leakage into the wall assembly.

14 0724

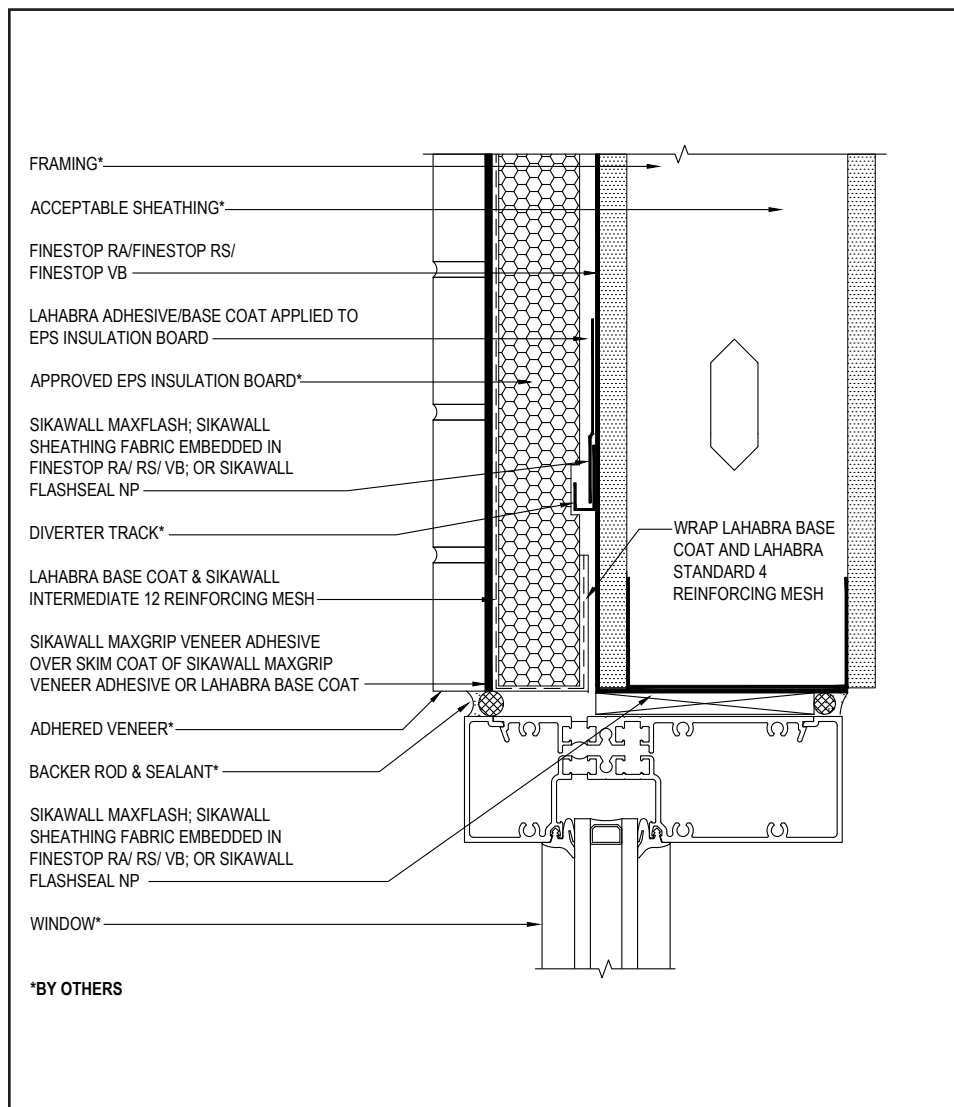
(\*NOTE: BY OTHERS)

The details within are the latest recommendations and are represented in good faith by Sika Corporation US (hereinafter Sika). The details are subject to change without notice. Sika accepts no liability for the end use of the details. For conditions not shown, consult Sika for review of specific details.

- Install Sika materials in accordance with current installation instructions.
- Unsatisfactory conditions shall be reported to the General Contractor and corrected before the application of Sika products.

## Pebbletex CI-DCA with MaxGrip Veneer Adhesive

### TYPICAL WINDOW HEAD WITH DIVERTER TRACK (FLUSH)



- All terminations must be fully encapsulated with mesh reinforced base coat. Extend reinforcing mesh a minimum of 2½" onto back of insulation board.
- Provide a back wrapped type joint with backer rod and sealant at system terminations to dissimilar materials, ensuring that a water tight seal is achieved (width per design).
- Diverter Flashing Requirements:
  - Extend diverter flashing 6" (152 mm) beyond opening on either side of the opening to allow potential moisture to drain down the wall to the side of the opening.
  - Ensure the flashing is in one piece and does not exceed 10 ft.
  - Ensure the diverter track flashing is sloped 1-2" to provide a means for drainage.
- Maintain a minimum of ¾" (19 mm) EPS insulation thickness.
- Prior to window and EPS installation, ensure water-resistive barrier is properly applied into the rough openings in accordance with LaHabra application guidelines and code requirements. Reference LaHabra Finestop published typical details.
- Reference *Acceptable Sealants for use with LaHabra Wall Systems* Technical Bulletin for a list of sealants.
- Consult window and sealant manufacturers to verify window installation, detailing and to ensure no water leakage into the wall assembly.

15 0724

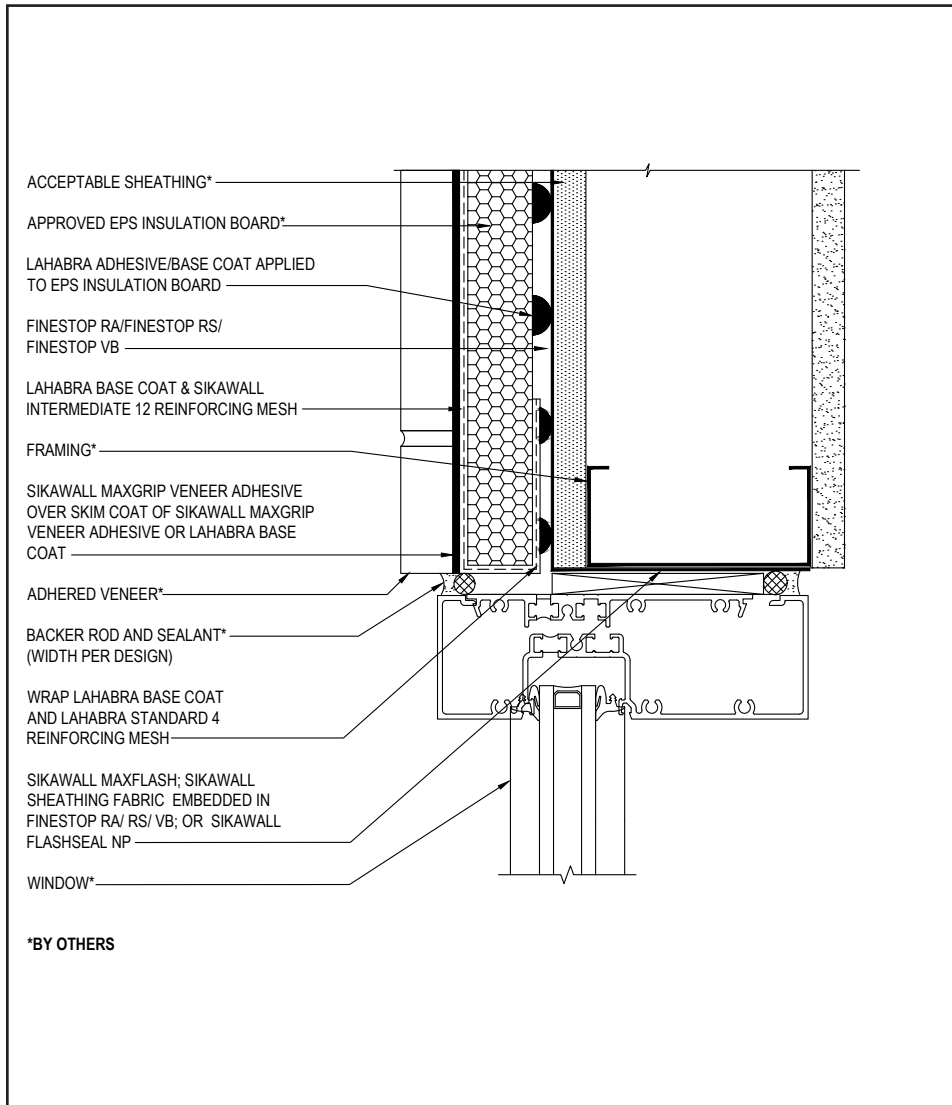
(\*NOTE: BY OTHERS)

The details within are the latest recommendations and are represented in good faith by Sika Corporation US (hereinafter Sika). The details are subject to change without notice. Sika accepts no liability for the end use of the details. For conditions not shown, consult Sika for review of specific details.

- Install Sika materials in accordance with current installation instructions.
- Unsatisfactory conditions shall be reported to the General Contractor and corrected before the application of Sika products.

## Pebbletex CI-DCA with MaxGrip Veneer Adhesive

### TYPICAL WINDOW JAMB (FLUSH)



16 0724

(\*NOTE: BY OTHERS)

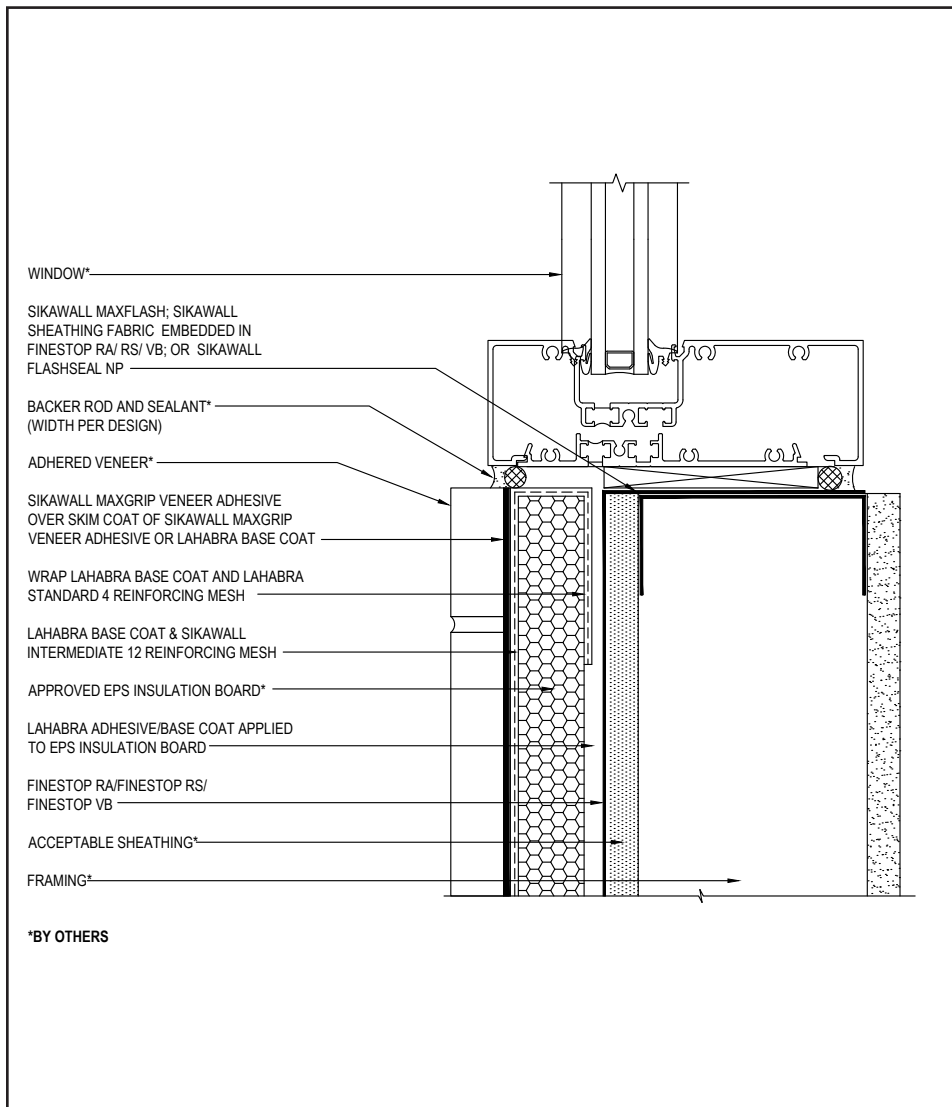
- All terminations must be fully encapsulated with mesh reinforced base coat. Extend reinforcing mesh a minimum of 2½" onto back of insulation board.
- Prior to window and EPS installation, ensure water-resistive barrier is properly applied into the rough openings in accordance with LaHabra application guidelines and code requirements. Reference LaHabra Finestop published typical details for further information.
- Provide a back wrapped type joint with backer rod and sealant at system terminations to dissimilar materials, ensuring that a water tight seal is achieved (width per design).
- Reference *Acceptable Sealants for use with LaHabra Wall Systems* Technical Bulletin for a list of sealants.
- Consult window and sealant manufacturers to verify window installation, detailing and to ensure no water leakage into the wall assembly.

The details within are the latest recommendations and are represented in good faith by Sika Corporation US (hereinafter Sika). The details are subject to change without notice. Sika accepts no liability for the end use of the details. For conditions not shown, consult Sika for review of specific details.

- Install Sika materials in accordance with current installation instructions.
- Unsatisfactory conditions shall be reported to the General Contractor and corrected before the application of Sika products.

## Pebbletex CI-DCA with MaxGrip Veneer Adhesive

### TYPICAL WINDOW SILL (FLUSH)



17 0724

(\*NOTE: BY OTHERS)

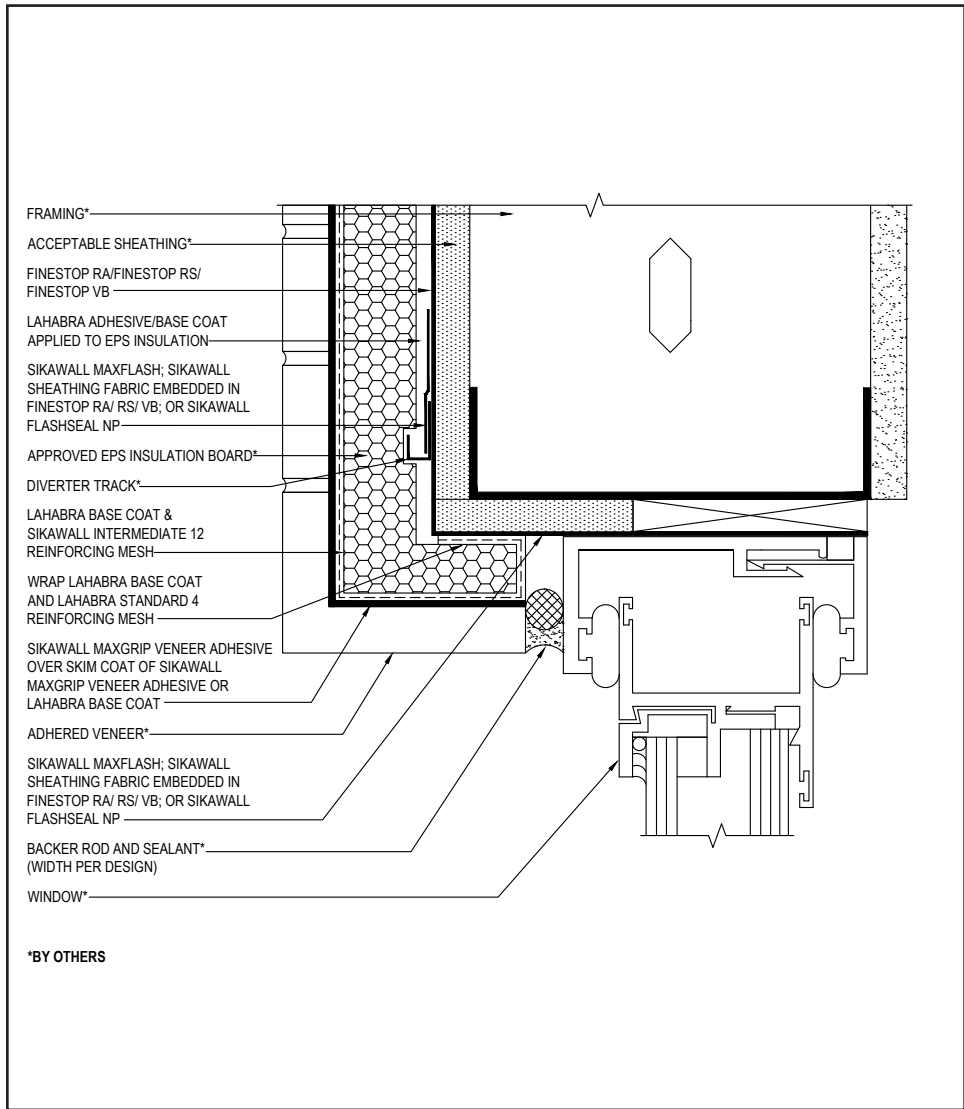
- All terminations must be fully encapsulated with mesh reinforced base coat. Extend reinforcing mesh a minimum of 2½" onto back of insulation board.
- Prior to window and EPS installation, ensure water-resistive barrier is properly applied into the rough openings in accordance with LaHabra application guidelines and code requirements. Reference LaHabra Finestop published typical details.
- Provide a back wrapped type joint with backer rod and sealant at system terminations to dissimilar materials, ensuring that a water tight seal is achieved (width per design).
- Reference *Acceptable Sealants for use with LaHabra Wall Systems* Technical Bulletin for a list of sealants.
- Consult window and sealant manufacturers to verify window installation, detailing and to ensure no water leakage into the wall assembly.

The details within are the latest recommendations and are represented in good faith by Sika Corporation US (hereinafter Sika). The details are subject to change without notice. Sika accepts no liability for the end use of the details. For conditions not shown, consult Sika for review of specific details.

- Install Sika materials in accordance with current installation instructions.
- Unsatisfactory conditions shall be reported to the General Contractor and corrected before the application of Sika products.

# Pebbletex CI-DCA with MaxGrip Veneer Adhesive

## TYPICAL WINDOW HEAD (RECESSED)



- All terminations must be fully encapsulated with mesh reinforced base coat.
- Provide a back wrapped joint with backer rod and sealant at system terminations to dissimilar materials, ensuring that a water tight seal is achieved (width per design).
- Diverter Flashing Requirements:
  - Extend diverter flashing 6" (152 mm) beyond opening on either side of the opening to allow potential moisture to drain down the wall to the side of the opening.
  - Ensure the flashing is in one piece and does not exceed 10 ft.
  - Ensure the diverter track flashing is sloped 1-2" to provide a means for drainage.
- Maintain a minimum of 3/4" (19 mm) EPS insulation thickness over diverter track.
- SikaWall Intermediate 12 reinforcing mesh is lapped around corners.
- Reference *Acceptable Sealants for Use with LaHabra Wall Systems* Technical Bulletin for a list of sealants.

18 0724

(\*NOTE: BY OTHERS)

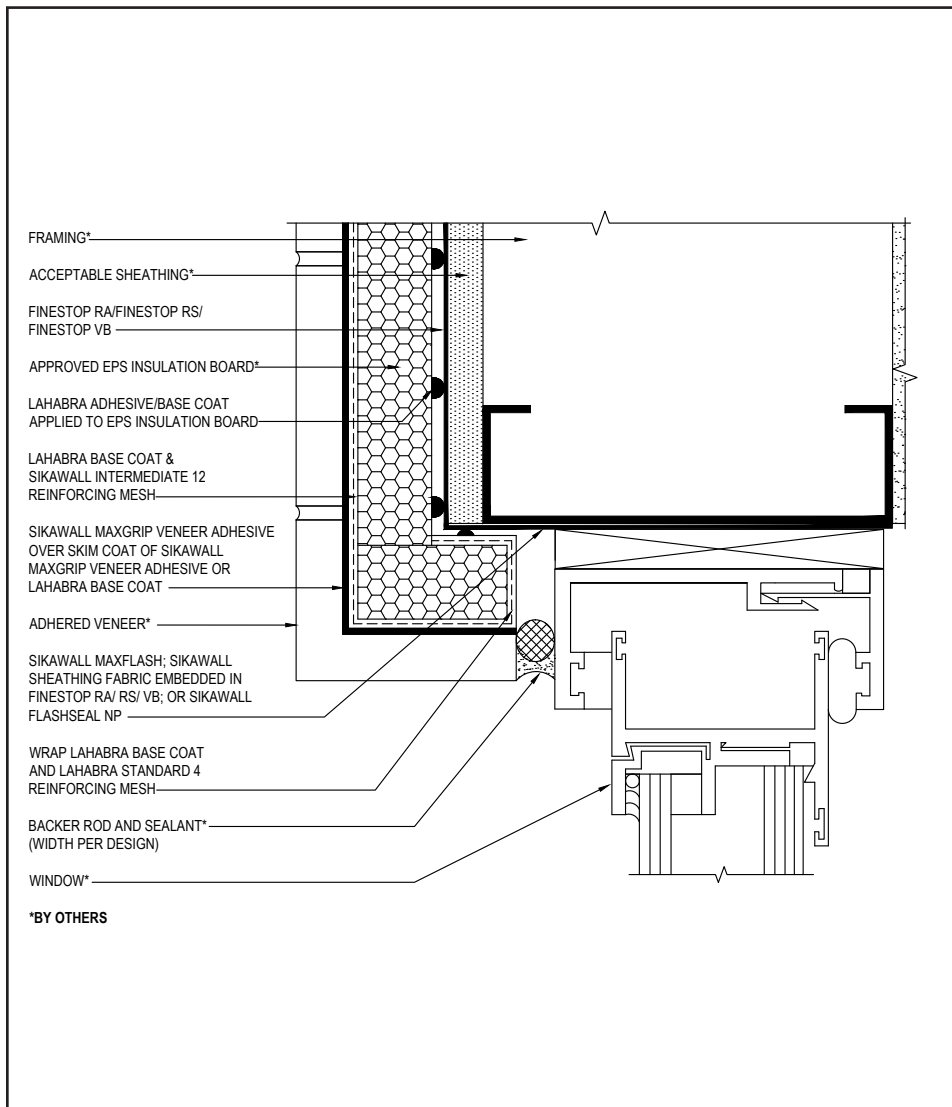
The details within are the latest recommendations and are represented in good faith by Sika Corporation US (hereinafter Sika). The details are subject to change without notice. Sika accepts no liability for the end use of the details. For conditions not shown, consult Sika for review of specific details.

- Install Sika materials in accordance with current installation instructions.
- Unsatisfactory conditions shall be reported to the General Contractor and corrected before the application of Sika products.



## Pebbletex CI-DCA with MaxGrip Veneer Adhesive

### TYPICAL WINDOW JAMB (RECESSED)



- All terminations must be fully encapsulated with mesh reinforced base coat.
- Prior to window and EPS installation, ensure water-resistive barrier is properly applied into the rough openings in accordance with LaHabra application guidelines and code requirements. Reference LaHabra Finestop published typical details for further information.
- Provide a back wrapped joint with backer rod and sealant at system terminations to dissimilar materials, ensuring that a water tight seal is achieved (width per design).
- Ensure SikaWall Intermediate 12 reinforcing mesh is lapped around corners.

19 0724

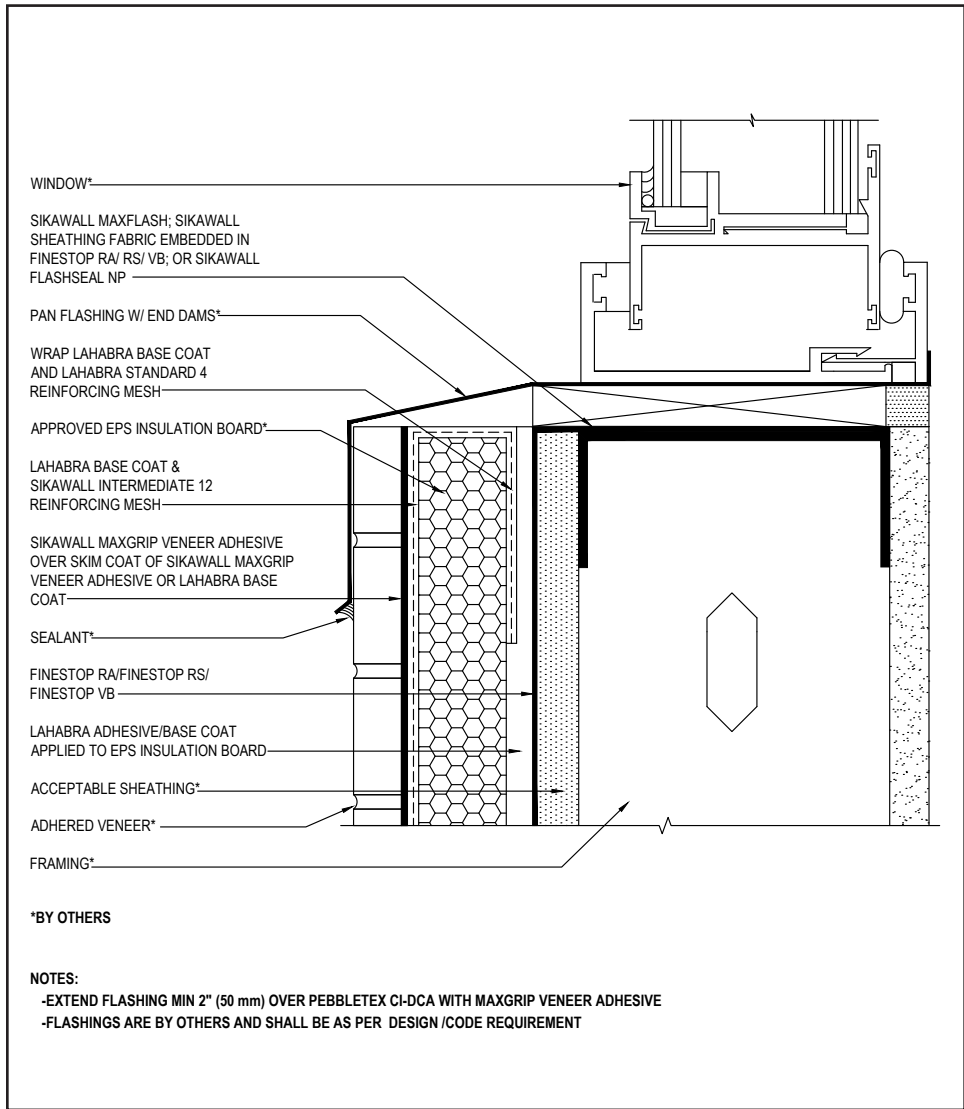
(\*NOTE: BY OTHERS)

The details within are the latest recommendations and are represented in good faith by Sika Corporation US (hereinafter Sika). The details are subject to change without notice. Sika accepts no liability for the end use of the details. For conditions not shown, consult Sika for review of specific details.

- Install Sika materials in accordance with current installation instructions.
- Unsatisfactory conditions shall be reported to the General Contractor and corrected before the application of Sika products.

# Pebbletex CI-DCA with MaxGrip Veneer Adhesive

## TYPICAL WINDOW SILL (RECESSED)



- All terminations must be fully encapsulated with mesh reinforced base coat.
- Prior to window and EPS installation, ensure water-resistive barrier is properly applied into the rough openings in accordance with LaHabra application guidelines and code requirements. Reference LaHabra Finestop published typical details for further information.
- Ensure that pan flashing extends onto the system a minimum of 2" (50 mm) down the face and that end dams are provided.

20 0724

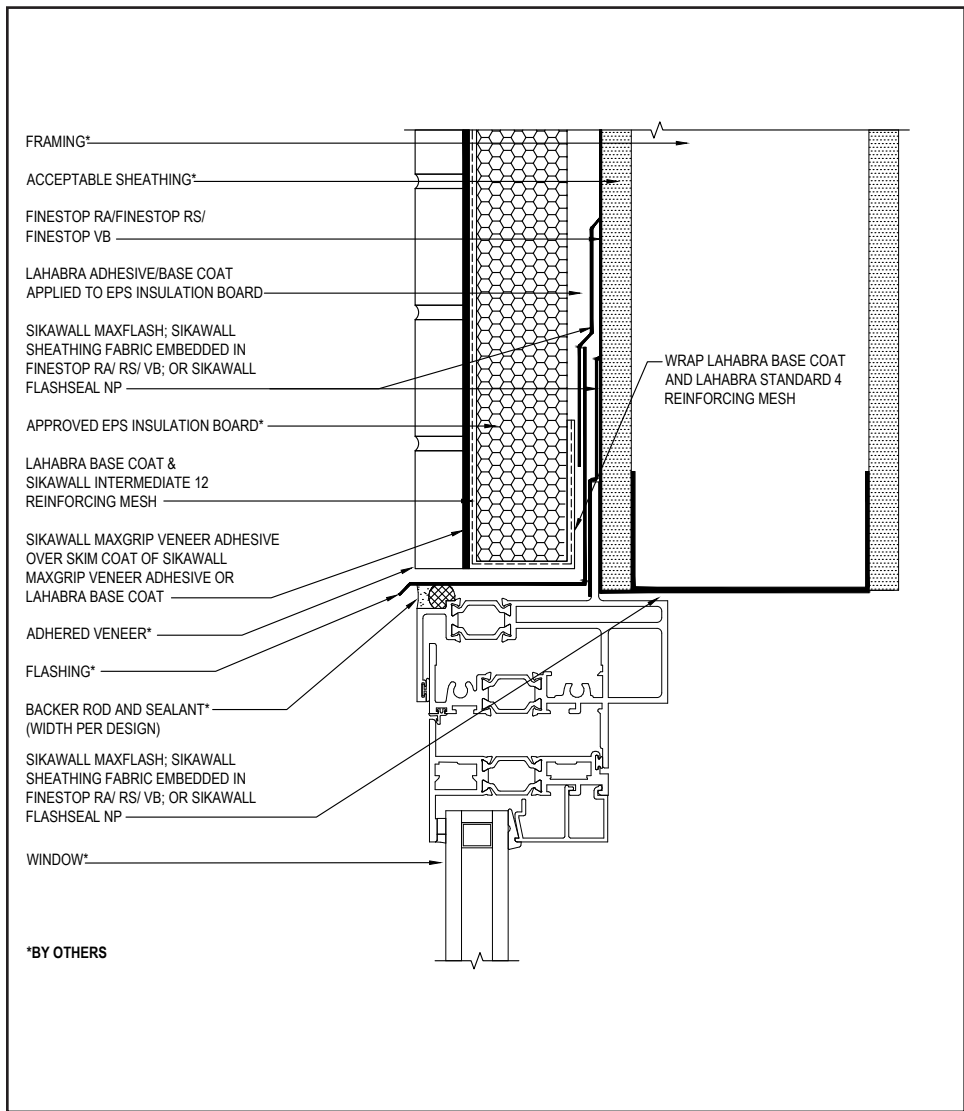
(\*NOTE: BY OTHERS)

The details within are the latest recommendations and are represented in good faith by Sika Corporation US (hereinafter Sika). The details are subject to change without notice. Sika accepts no liability for the end use of the details. For conditions not shown, consult Sika for review of specific details.

- Install Sika materials in accordance with current installation instructions.
- Unsatisfactory conditions shall be reported to the General Contractor and corrected before the application of Sika products.

# Pebbletex CI-DCA with MaxGrip Veneer Adhesive

## TYPICAL FLANGED WINDOW HEAD



- All terminations must be fully encapsulated with mesh reinforced base coat.
- Ensure a means for drainage is provided at system terminations at all window heads.
- Provide end-dams at flashing terminations.
- Ensure the window flange is treated with a LaHabra transition treatment.
- Prior to window and EPS installation, ensure water-resistive barrier is properly applied into the rough openings in accordance with LaHabra application guidelines and code requirements. Reference LaHabra Finestop published typical details for further information.

21 0724

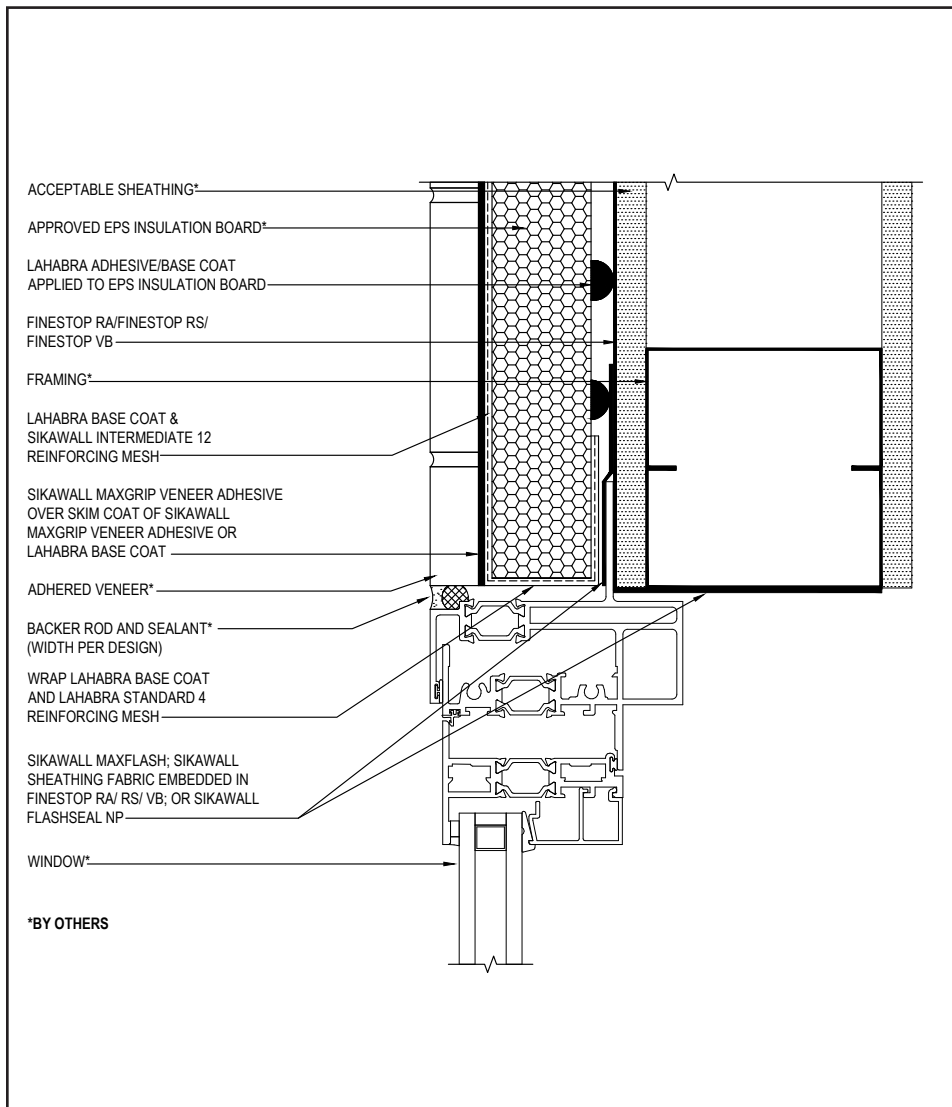
(\*NOTE: BY OTHERS)

The details within are the latest recommendations and are represented in good faith by Sika Corporation US (hereinafter Sika). The details are subject to change without notice. Sika accepts no liability for the end use of the details. For conditions not shown, consult Sika for review of specific details.

- Install Sika materials in accordance with current installation instructions.
- Unsatisfactory conditions shall be reported to the General Contractor and corrected before the application of Sika products.

# Pebbletex CI-DCA with MaxGrip Veneer Adhesive

## TYPICAL FLANGED WINDOW JAMB



- All terminations must be fully encapsulated with mesh reinforced base coat.
- Prior to window and EPS installation, ensure water-resistive barrier is properly applied into the rough openings in accordance with LaHabra application guidelines and code requirements. Reference LaHabra Finestop published typical details for further information.
- Ensure the window flange is treated with a LaHabra transition treatment.
- Provide a back wrapped joint with backer rod and sealant at system terminations to dissimilar materials, ensuring that a water tight seal is achieved (width per design).

22 0724

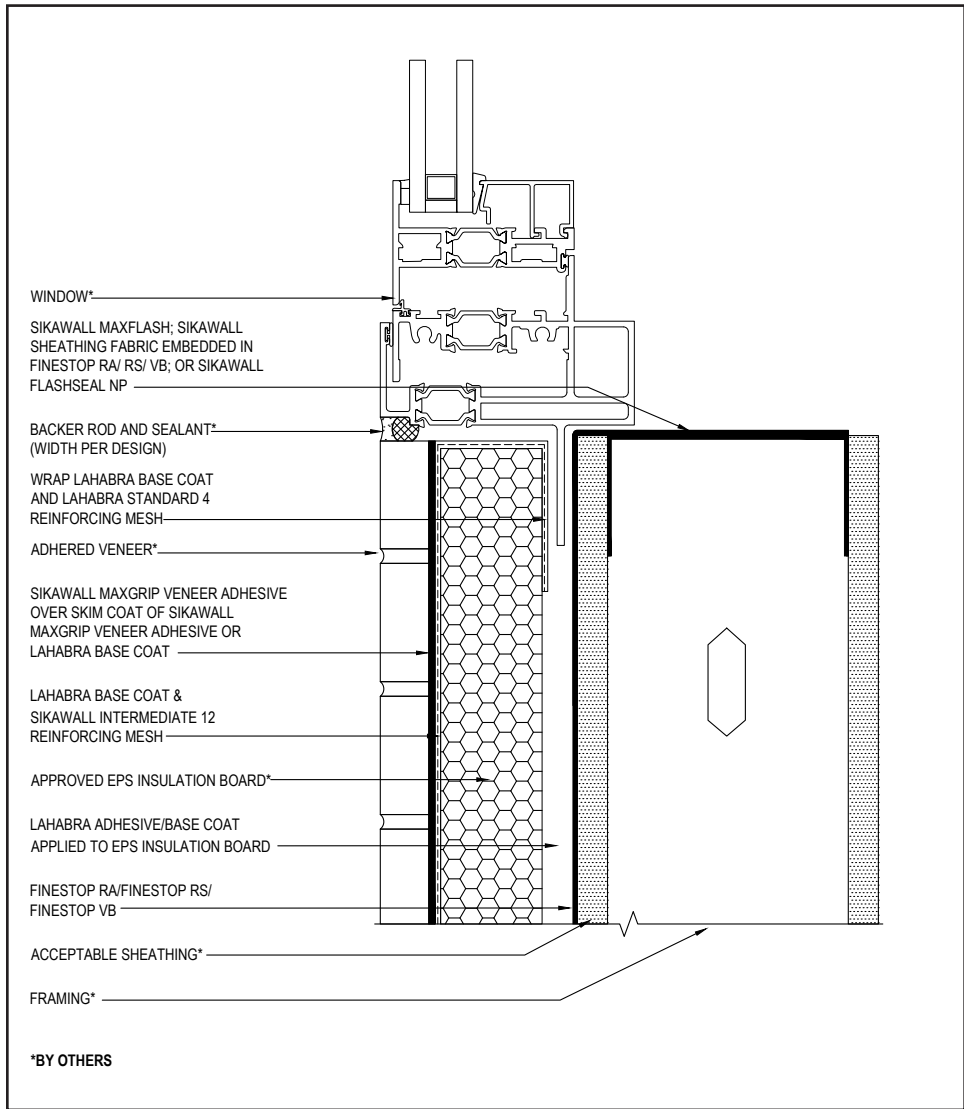
(\*NOTE: BY OTHERS)

The details within are the latest recommendations and are represented in good faith by Sika Corporation US (hereinafter Sika). The details are subject to change without notice. Sika accepts no liability for the end use of the details. For conditions not shown, consult Sika for review of specific details.

- Install Sika materials in accordance with current installation instructions.
- Unsatisfactory conditions shall be reported to the General Contractor and corrected before the application of Sika products.

# Pebbletex CI-DCA with MaxGrip Veneer Adhesive

## TYPICAL FLANGED WINDOW SILL



- All terminations must be fully encapsulated with mesh reinforced base coat.
- Prior to window and EPS installation, ensure water-resistive barrier is properly applied into the rough openings in accordance with LaHabra application guidelines and code requirements. Reference LaHabra Finestop published typical details for further information.
- Provide a back wrapped joint with backer rod and sealant at system terminations to dissimilar materials, ensuring that a water tight seal is achieved (width per design).
- Consult window manufacturer for recommendations for treatment of window sill flange.

23 0724

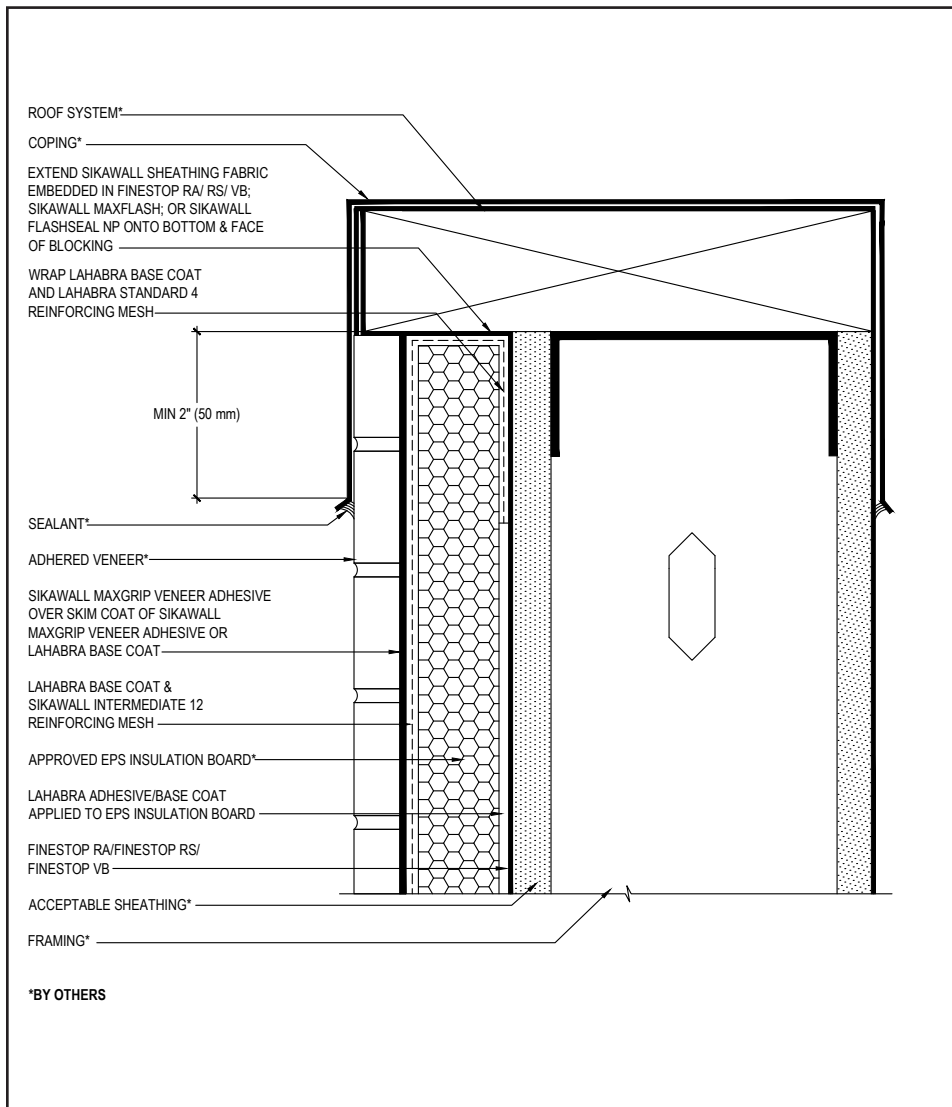
(\*NOTE: BY OTHERS)

The details within are the latest recommendations and are represented in good faith by Sika Corporation US (hereinafter Sika). The details are subject to change without notice. Sika accepts no liability for the end use of the details. For conditions not shown, consult Sika for review of specific details.

- Install Sika materials in accordance with current installation instructions.
- Unsatisfactory conditions shall be reported to the General Contractor and corrected before the application of Sika products.

## Pebbletex CI-DCA with MaxGrip Veneer Adhesive

### TYPICAL COPING



- All terminations must be fully encapsulated with mesh reinforced base coat. Extend reinforcing mesh a minimum of 2½" onto back of insulation board.
- Ensure that coping/ flashing extends over the system a minimum of 2" (50 mm).
- Extend the LaHabra air/water-resistant barrier on to the bottom and face of blocking.

24 0724

(\*NOTE: BY OTHERS)

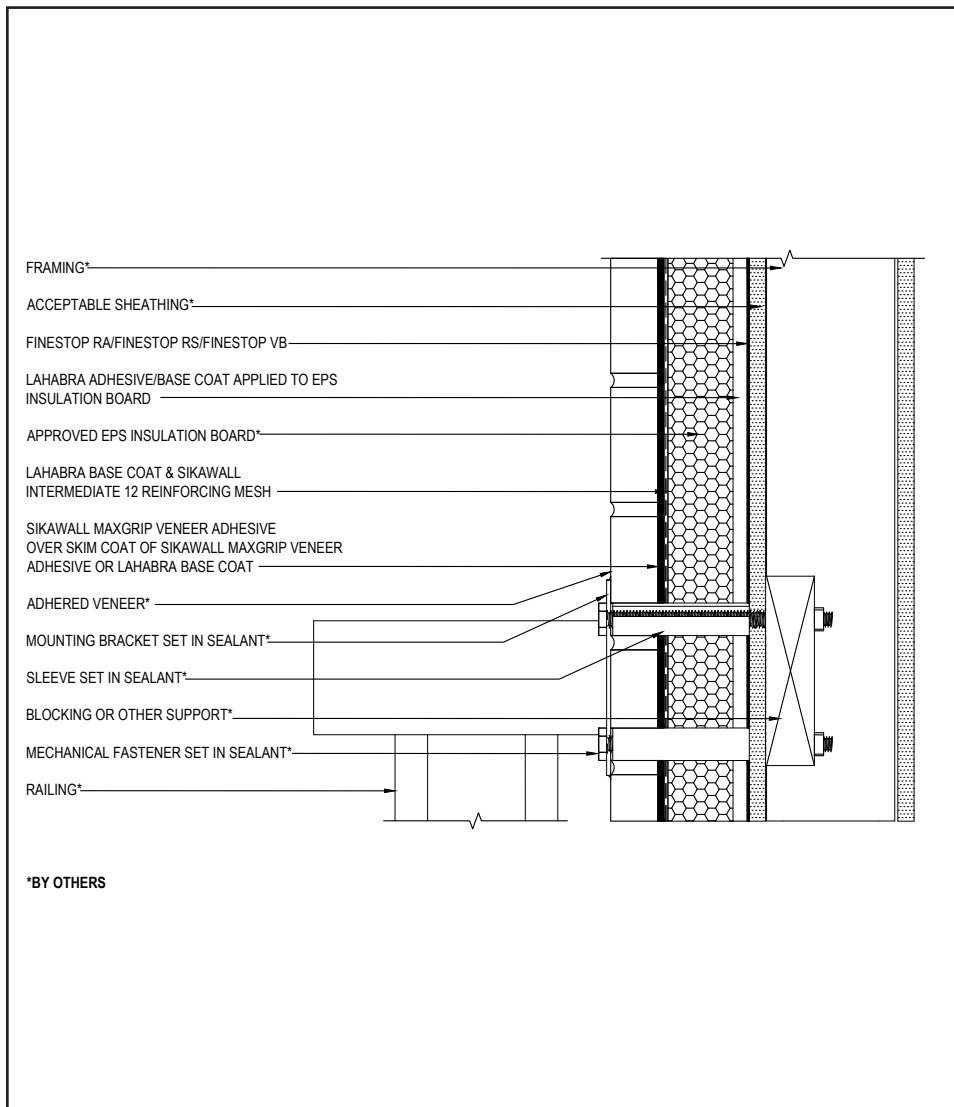
The details within are the latest recommendations and are represented in good faith by Sika Corporation US (hereinafter Sika). The details are subject to change without notice. Sika accepts no liability for the end use of the details. For conditions not shown, consult Sika for review of specific details.

- Install Sika materials in accordance with current installation instructions.
- Unsatisfactory conditions shall be reported to the General Contractor and corrected before the application of Sika products.



# Pebbletex CI-DCA with MaxGrip Veneer Adhesive

## TYPICAL HAND RAIL ATTACHMENT



- Ensure all penetrations through the system and railing plate are properly sealed.

25 0724

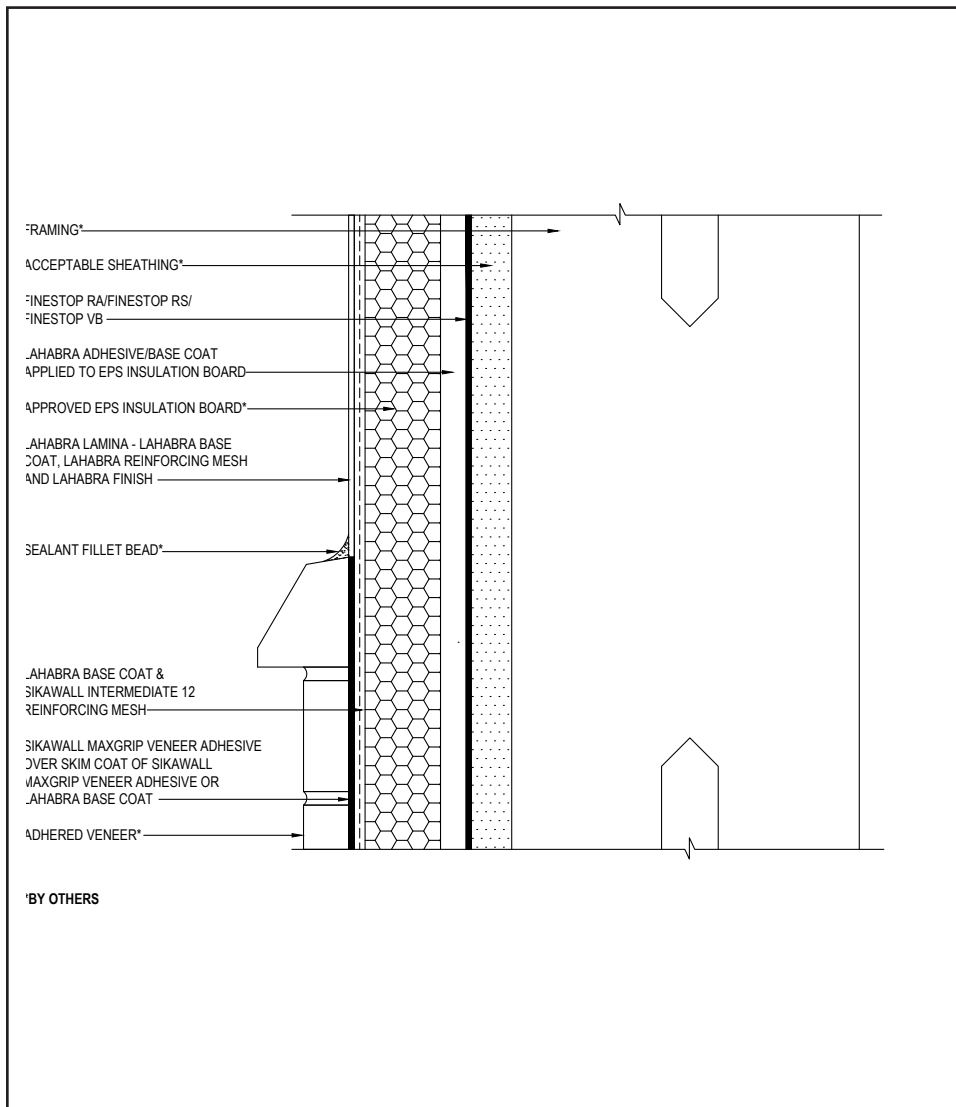
(\*NOTE: BY OTHERS)

The details within are the latest recommendations and are represented in good faith by Sika Corporation US (hereinafter Sika). The details are subject to change without notice. Sika accepts no liability for the end use of the details. For conditions not shown, consult Sika for review of specific details.

- Install Sika materials in accordance with current installation instructions.
- Unsatisfactory conditions shall be reported to the General Contractor and corrected before the application of Sika products.

# Pebbletex CI-DCA with MaxGrip Veneer Adhesive

## TYPICAL TRANSITION BETWEEN VENEER AND ACRYLIC FINISH



- Ensure SikaWall Intermediate 12 reinforcing mesh is used behind adhered veneer.

26 0724

(\*NOTE: BY OTHERS)

The details within are the latest recommendations and are represented in good faith by Sika Corporation US (hereinafter Sika). The details are subject to change without notice. Sika accepts no liability for the end use of the details. For conditions not shown, consult Sika for review of specific details.

- Install Sika materials in accordance with current installation instructions.
- Unsatisfactory conditions shall be reported to the General Contractor and corrected before the application of Sika products.

## LIMITED WARRANTY NOTICE

Prior to each use of any product of Sika Corporation, its subsidiaries or affiliates ("SIKA"), the user must always read and follow the warnings and instructions on the product's most current product label, Product Data Sheet and Safety Data Sheet which are available at [usa.sika.com/lahabra](http://usa.sika.com/lahabra) or by calling our Technical Service Department at +1 (800) 589-1336.

Nothing contained in any SIKA literature or materials relieves the user of the obligation to read and follow the warnings and instructions for each SIKA product as set forth in the current product label, Product Data Sheet and Safety Data Sheet prior to use of the SIKA product.

SIKA warrants this product for one year from date of installation to be free from manufacturing defects and to meet the technical properties on the current Product Data Sheet if used as directed within the product's shelf life. User determines suitability of product for intended use and assumes all risks. User's and/or buyer's sole remedy shall be limited to the purchase price or replacement of this product exclusive of any labor costs. NO OTHER WARRANTIES EXPRESS OR IMPLIED SHALL APPLY INCLUDING ANY WARRANTY OF MERCHANTABILITY OR FITNESS FOR A PARTICULAR PURPOSE. SIKA SHALL NOT BE LIABLE UNDER ANY LEGAL THEORY FOR SPECIAL OR CONSEQUENTIAL DAMAGES. SIKA SHALL NOT BE RESPONSIBLE FOR THE USE OF THIS PRODUCT IN A MANNER TO INFRINGE ON ANY PATENT OR ANY OTHER INTELLECTUAL PROPERTY RIGHTS HELD BY OTHERS. Sale of SIKA products are subject to the Terms and Conditions of Sale which are available at [usa.sika.com](http://usa.sika.com).

For the most current version of this literature, please visit our website at [usa.sika.com/lahabra](http://usa.sika.com/lahabra).

**Sika Corporation**

201 Polito Avenue  
Lyndhurst, NJ 07071 USA  
Customer Service +1 (800) 433-9517  
Technical Service +1 (800) 589-1336  
[usa.sika.com/lahabra](http://usa.sika.com/lahabra)

Rev July 2024

**BUILDING TRUST**

