

## SYSTEM DATA SHEET

# PAREX® WaterMaster NC

## CI Water-Drainage Exterior Wall Cladding Featuring Noncombustible Mineral Wool

### PRODUCT DESCRIPTION

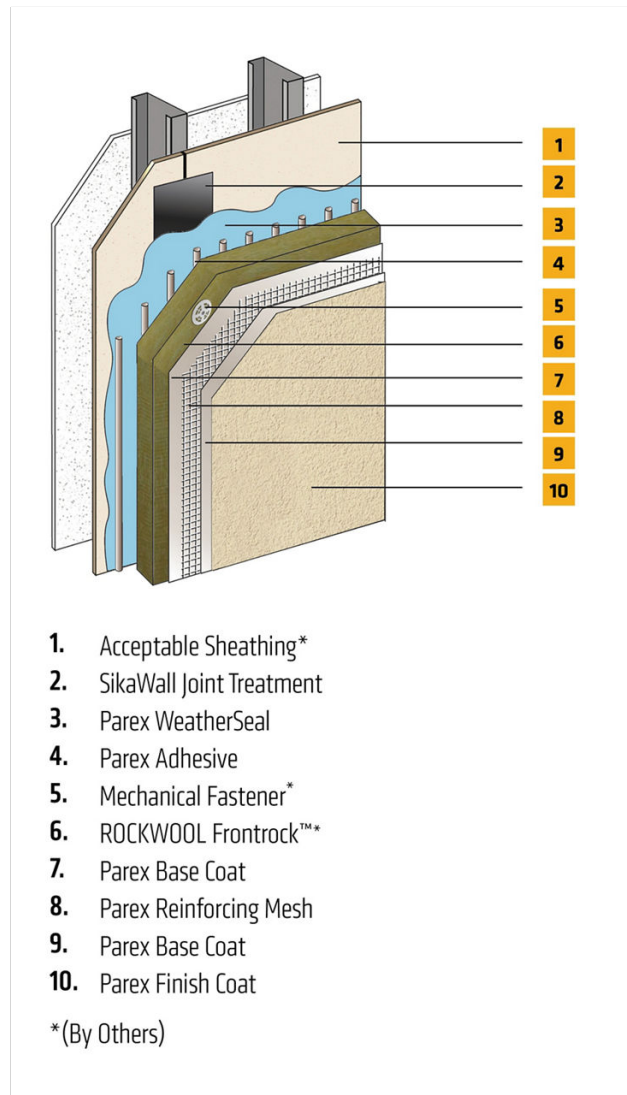
PAREX® WaterMaster NC is a continuously insulated (CI), water-drainage wall cladding. The system utilizes ROCKWOOL Frontrock™ continuous exterior insulation and Parex® WeatherSeal fluid-applied air/water-resistive barrier that provides continuous air and moisture protection.

### USES

May be used in fire-resistance-rated construction and in any construction type, including IBC Types I through V, when installed in accordance with system instructions. For use on above grade vertical walls.

### CHARACTERISTICS / ADVANTAGES

- For use on non-combustible construction types
- For use on fire resisted rated walls
- Non-Combustible Continuous Insulation



## APPROVALS / STANDARDS

Insulation Type	Density	R-Value	Thickness Min	Thickness Max
Mono Density	8.5 lbs/ft3	4 per inch	1.5"	4"
Dual Density	9.3 lbs/ft3 outer layer 5.9 lbs/ft3 inner layer	4 per inch	2.5"	4"

ASTM C612 Type IVA; non-combustible per ASTM E136;  
Flame Spread 0, Smoke Developed ≤ 15 per ASTM E84.  
Size 2' x 4' (0.6 m x 1.22 m) For additional insulation requirements, please reference PAREX® WaterMaster NC specification \*For full testing results refer to the Frontrock™ Technical Data Sheet.  
rockwool.com/products/frontrock

## SYSTEM INFORMATION

### Compatibility

Material substitutions will adversely affect system performance and will void all warranty coverage unless approved in writing by Sika Facades Technical Services.

### System Performance

Document	Code Description
ICC-ESR 1878	Complies with IBC and IRC
ASTM E2568 / AC 235	Complies with requirements
ASTM E119	Does not detract from fire rating of base wall
ICC-ESR 2986 (Parex® WeatherSeal SRO)	Air/water-resistive barrier*
NFPA 285/268	Meets requirements for use on fire-resistance-rated construction and in any construction type, including IBC Types I through V
ASTM E136	Insulation defined as noncombustible
ASTM C612	ROCKWOOL insulation is compliant for mineral fiber block and board thermal insulation

For testing results, please reference PAREX® WaterMaster NC specification.  
\*Parex WeatherSeal Spray and Roll-On can be used behind all claddings where more than one wall system is specified, creating one continuous AWRB system. This is appropriate whenever PAREX® WaterMaster NC is used with other cladding types on a multi-clad building.

## BASIS OF PRODUCT DATA

Results may differ based upon statistical variations depending upon mixing methods and equipment, temperature, application methods, test methods, actual site conditions and curing conditions.

## LIMITATIONS

- Users must read the most current Product Data Sheets for each system component before using any products and follow all application instructions and cautions.
- For use on above grade vertical walls only. System must terminate a minimum of 6" (152 mm) above grade.

- Not compatible with SikaWall MaxGrip Veneer Adhesive and adhered veneer.
- All products must be installed at minimum 40°F (4°C) ambient and substrate temperatures unless otherwise noted on specific Sika Product Data Sheets. Do not apply in ambient temperature greater than 100°F (38°C) or to surface temperature above 120°F (49°C)
- Multiple coats of base coat may be required to achieve a flat surface.
- Use of smooth/fine finish textures is not advised, however if desired to achieve design requirements, a large-scale mock-up is recommended.
- Requires the use of 9 fasteners per board.
- Not for use with SikaWall 3000 Rapid Bond Adhesive
- Contact Sika Facades' Technical Service Department at 1-800-226-2424 for additional information.

**PURPOSE. Sika SHALL NOT BE LIABLE UNDER ANY LEGAL THEORY FOR SPECIAL OR CONSEQUENTIAL DAMAGES. Sika SHALL NOT BE RESPONSIBLE FOR THE USE OF THIS PRODUCT IN A MANNER TO INFRINGE ON ANY PATENT OR ANY OTHER INTELLECTUAL PROPERTY RIGHTS HELD BY OTHERS.**

Sale of Sika products are subject to the Terms and Conditions of Sale which are available at <https://usa.sika.com/en/group/SikaCorp/termsandconditions.html> or by calling 1-800-933-7452.

## ENVIRONMENTAL, HEALTH AND SAFETY

For further information and advice regarding transportation, handling, storage and disposal of chemical products, user should refer to the actual Safety Data Sheets containing physical, environmental, toxicological and other safety related data. User must read the current actual Safety Data Sheets before using any products. In case of an emergency, call CHEMTREC at 1-800-424-9300, International 703-527-3887.

## LEGAL DISCLAIMER

- KEEP CONTAINER TIGHTLY CLOSED
- KEEP OUT OF REACH OF CHILDREN
- NOT FOR INTERNAL CONSUMPTION
- FOR INDUSTRIAL USE ONLY
- FOR PROFESSIONAL USE ONLY

Prior to each use of any product of Sika Corporation, its subsidiaries or affiliates ("SIKA"), the user must always read and follow the warnings and instructions on the product's most current product label, Product Data Sheet and Safety Data Sheet which are available at [usa.sika.com](http://usa.sika.com) or by calling Sika's Technical Service Department at 1-800-933-7452. Nothing contained in any Sika literature or materials relieves the user of the obligation to read and follow the warnings and instructions for each Sika product as set forth in the current product label, Product Data Sheet and Safety Data Sheet prior to use of the Sika product.

Sika warrants this product for one year from date of installation to be free from manufacturing defects and to meet the technical properties on the current Product Data Sheet if used as directed within the product's shelf life. User assumes all risks. User's and/or buyer's sole remedy shall be limited to the purchase price or replacement of this product exclusive of any labor costs.

**NO OTHER WARRANTIES EXPRESS OR IMPLIED SHALL APPLY INCLUDING ANY WARRANTY OF MERCHANTABILITY OR FITNESS FOR A PARTICULAR**



System Data Sheet  
PAREX® WaterMaster NC  
May 2025, Version 01.01  
021830950000242759

PAREXWaterMasterNC-en-US-(05-2025)-1-1.pdf

