

## SYSTEM DATA SHEET

# PAREX® WaterMaster XPS

Light weight and Versatile WaterMaster System with XPS insulation

### PRODUCT DESCRIPTION

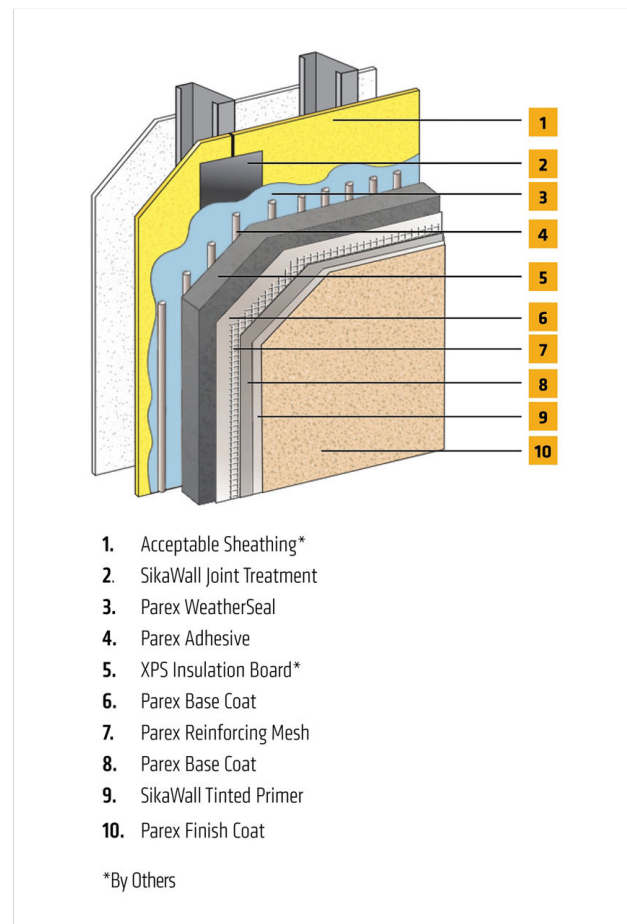
PAREX® WaterMaster XPS is an adhesively attached Continuous Insulation (CI) drainage system that offers energy efficiency; light weight, versatile design; and economical installation. This system incorporates an air & water-resistive barrier and a means of drainage achieved through vertical ribbons of adhesive applied to the back of the insulation boards, providing a drainage plane for incidental moisture. The air & water-resistive barrier is a liquid applied membrane, used for both joint treatment and field surface area application, that reduces air leakage, maximizes energy efficiency and eliminates the potential of rips and tears while exposed to the elements during construction. This liquid applied barrier, when functioning as an air barrier, allows climate control systems to operate more efficiently by preventing transmission of conditioned air out & outside air in. The system is finished in Parex's DPR Finish.

### USES

PAREX® WaterMaster XPS may be used in fire-resistance-rated construction and in any construction type (IBC Types I through V), when installed in accordance with Sika instructions.

### CHARACTERISTICS / ADVANTAGES

- Higher R value vs Standard EPS
- For Use on all Non-combustible construction types
- For Use on Fire resistance rated walls
- Continuous Insulation
- Built in drainage
- Unlimited building height



## SYSTEM INFORMATION

Compatibility	Material substitution will adversely affect system performance and will void all warranty coverage unless approved in writing by Sika Facades Technical Service Team.	
System Performance	<b>Document</b>	<b>Description</b>
	ICC-ES ESR 2562	Complies with IBC and IRC
	ASTM E2568 / AC 235	Complies with requirements
	ASTM E119	Does not detract from fire-resistance rating of base wall
	ICC-ES ESR-2045 (Parex® WeatherSeal SRO)	Air/water-resistive barrier
	NFPA 285	Meets requirements for use on noncombustible, construction types

## APPLICATION INFORMATION

### Substrates

#### Acceptable Substrates:

Glass mat Gypsum Sheathing  
Gypsum Sheathing  
Exposure 1 OSB  
Cement Fiber Sheathing  
Concrete & Concrete Masonry  
CDX Plywood

## BASIS OF PRODUCT DATA

Results may differ based upon statistical variations depending upon mixing methods and equipment, temperature, application methods, test methods, actual site conditions and curing conditions.

## LIMITATIONS

- **Users must read the most current Product Data Sheets for each system component before using any products and follow all application instructions and cautions.**
- For use on above grade vertical walls. System must terminate a minimum of 6" (152 mm) above grade.
- Additives are not permitted for any product unless approved in writing by Sika Facades Technical Service Team.
- All products must be installed at minimum 40 °F (4 °C) ambient and substrate temperatures unless otherwise noted on specific Product Data Sheets.
- Protect all work from precipitation for at least 24-hours after application.
- This system is not designed for horizontal applications. Always maintain a minimum slope of 1:2 up to a maximum width of 12".
- All substrates must be clean, dry and sound without planar irregularities greater than 1/4" per 10' (6 mm per 3 m).
- Use SikaWall Strong 15 or Ultra HI 20 Reinforcing Mesh

at ground floor and on other locations where high traffic is expected.

- Contact Sika Facades' Technical Service Department at 1-800-226-2424 for additional information.

## ENVIRONMENTAL, HEALTH AND SAFETY

For further information and advice regarding transportation, handling, storage and disposal of chemical products, user should refer to the actual Safety Data Sheets containing physical, environmental, toxicological and other safety related data. User must read the current actual Safety Data Sheets before using any products. In case of an emergency, call CHEMTREC at 1-800-424-9300, International 703-527-3887.

## LEGAL DISCLAIMER

- **KEEP CONTAINER TIGHTLY CLOSED**
- **KEEP OUT OF REACH OF CHILDREN**
- **NOT FOR INTERNAL CONSUMPTION**
- **FOR INDUSTRIAL USE ONLY**
- **FOR PROFESSIONAL USE ONLY**

Prior to each use of any product of Sika Corporation, its subsidiaries or affiliates ("SIKA"), the user must always read and follow the warnings and instructions on the product's most current product label, Product Data

Sheet and Safety Data Sheet which are available at [usa.sika.com](http://usa.sika.com) or by calling SIKA's Technical Service Department at 1-800-933-7452. Nothing contained in any SIKA literature or materials relieves the user of the obligation to read and follow the warnings and instructions for each SIKA product as set forth in the current product label, Product Data Sheet and Safety Data Sheet prior to use of the SIKA product.

SIKA warrants this product for one year from date of installation to be free from manufacturing defects and to meet the technical properties on the current Product Data Sheet if used as directed within the product's shelf life. User determines suitability of product for intended use and assumes all risks. User's and/or buyer's sole remedy shall be limited to the purchase price or replacement of this product exclusive of any labor costs.

**NO OTHER WARRANTIES EXPRESS OR IMPLIED SHALL APPLY INCLUDING ANY WARRANTY OF MERCHANTABILITY OR FITNESS FOR A PARTICULAR PURPOSE. SIKA SHALL NOT BE LIABLE UNDER ANY LEGAL THEORY FOR SPECIAL OR CONSEQUENTIAL DAMAGES. SIKA SHALL NOT BE RESPONSIBLE FOR THE USE OF THIS PRODUCT IN A MANNER TO INFRINGE ON ANY PATENT OR ANY OTHER INTELLECTUAL PROPERTY RIGHTS HELD BY OTHERS.**

Sale of SIKA products are subject to the Terms and Conditions of Sale which are available at <https://usa.sika.com/en/group/SikaCorp/termsandconditions.html> or by calling 1-800-933-7452.

SIKA warrants this product for one year from date of installation to be free from manufacturing defects and to meet the technical properties on the current Product Data Sheet if used as directed within the product's shelf life. User determines suitability of product for intended use and assumes all risks. User's and/or buyer's sole remedy shall be limited to the purchase price or replacement of this product exclusive of any labor costs.

**NO OTHER WARRANTIES EXPRESS OR IMPLIED SHALL APPLY INCLUDING ANY WARRANTY OF MERCHANTABILITY OR FITNESS FOR A PARTICULAR PURPOSE. SIKA SHALL NOT BE LIABLE UNDER ANY LEGAL THEORY FOR SPECIAL OR CONSEQUENTIAL DAMAGES. SIKA SHALL NOT BE RESPONSIBLE FOR THE USE OF THIS PRODUCT IN A MANNER TO INFRINGE ON ANY PATENT OR ANY OTHER INTELLECTUAL PROPERTY RIGHTS HELD BY OTHERS.** Sale of SIKA products are subject to the Terms and Conditions of Sale which are available at [usa.sika.com](http://usa.sika.com).

**Sika Corporation**

201 Polito Avenue  
Lyndhurst, NJ 07071  
Phone: +1-800-933-7452  
Fax: +1-201-933-6225  
[usa.sika.com](http://usa.sika.com)



**System Data Sheet**  
**PAREX® WaterMaster XPS**  
May 2025, Version 01.01  
021830950000242682

PAREXWaterMasterXPS-en-US-(05-2025)-1-1.pdf

