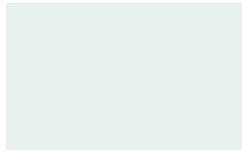


# COLOR CHART

**Express Colors \***



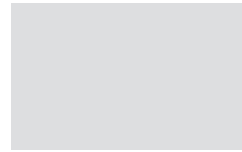
Almond



Bone White



Cityscape



Clear Anodized



Dark Bronze



Medium Bronze



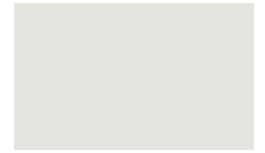
Sandstone



Sierra Tan



Slate Gray



Stone White

**Standard Colors**



Cardinal (Regal) Red



Charcoal (Charcoal Gray)



Colonial Red



Evergreen



Forest (Sherwood) Green



Granite



Hartford Green



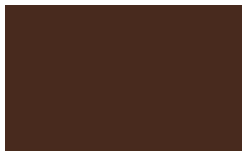
Hemlock Green



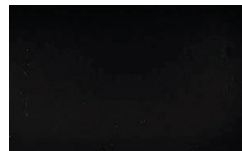
Hunter Green



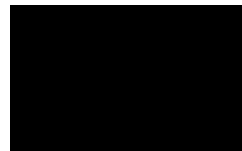
Interstate (Regal) Blue



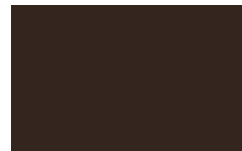
Mansard Brown



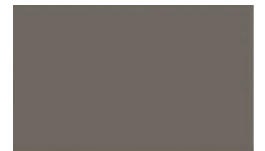
Matte Black ▲



Glossy Black ▲



Midnight (Extra Dark) Bronze



Musket Gray



Patina Green ▲



Sky (Military) Blue



Slate Blue



Terra Cotta

**Premium Colors**



Aged Copper



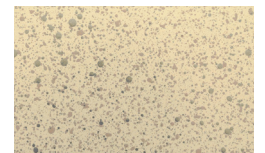
Award Blue



Champagne (Metallic)



(Classic) Copper Penny



Sand Stone ■★



Silver (Metallic)



Silversmith



Weathered Zinc



Zinc

- \* = Also in Mill Finish
- = Post-Painted
- ▲ = Must Specify Supplier
- ★ = Available in 3 Other Stone Colors

Our colors are deep, rich and true. Made of Valspar's Fluropon® High Performance Hylar 5000®/Kynar 500® finish, they offer the ultimate in resistance against fading and weathering. Custom colors also available.

METL-0008

# Quick Reference Guide

		24 ga.	22 ga.	.040"	.050"	.063"
<b>Hylar 500®/Kynar 500®</b>	Almond	♦	♦	♦	♦	
	Bone White	♦	♦	♦	♦	♦
	Cardinal (Regal) Red	♦			♦	
	Charcoal (Charcoal Gray)	♦	♦	♦	♦	
	Cityscape	♦	♦	♦	♦	
	Colonial Red	♦	♦	♦	♦	
	Dark Bronze	♦	♦	♦	♦	♦
	Midnight Bronze	♦	♦	♦	♦	
	Evergreen	♦				
	Forest (Sherwood) Green	♦	♦	♦	♦	
	Granite	♦	♦	♦	♦	
	Hartford Green	♦		♦	♦	
	Hemlock Green	♦			♦	
	Hunter Green	♦				
	Mansard Brown	♦	♦	♦	♦	
	Matte Black ▲	♦	♦	♦	♦	
	Glossy Black ▲	♦	♦	♦	♦	
	Medium Bronze	♦	♦	♦	♦	♦
	Musket Gray	♦	♦		♦	
	Patina Green ▲	♦		♦		
	Interstate (Regal) Blue	♦	♦	♦	♦	
Sky (Military) Blue	♦	♦	♦			
Slate Blue	♦					
Slate Gray	♦	♦	♦	♦		
Sandstone	♦	♦	♦	♦	♦	
Sierra Tan	♦	♦	♦	♦		
Stone White	♦	♦	♦	♦	♦	
Terra Cotta	♦			♦		
<b>Premium</b>	Champagne Metallic	♦	♦	♦	♦	
	Copper Penny (Classic)	♦		♦	♦	
	Silver Metallic	♦	♦	♦	♦	
	Zinc	♦		♦	♦	
	Weathered Zinc	♦	♦		♦	
	Aged Copper	♦				
	Silversmith			♦		
	Sand Stone (Spatter Coat)			♦	♦	♦
Award Blue	♦			♦		
<b>Coil Anodized</b>	Black			♦		
	Clear			♦	♦	♦
	Dark Bronze			♦		
	Light Bronze			♦		
<b>Other</b>	Mill Finish (3003-H14)	.040, .050, .063, .080, .100, .125				
	110 Copper	16 oz. & 20 oz.				
	304 - 2B Stainless Steel	20 ga., 22 ga. & 24 ga.				
	Galvanized Steel	16 ga., 20 ga., 22 ga. & 24 ga.				
	Galvalume Plus	22 ga., 24 ga.				
Paint Grip	24 ga.					

Also available: Stucco Embossed Sheets

▲ = Must specify supplier. Contact Metal-Era for specific color information.

## Please Note

Express colors available in shorter lead times for 24 ga., .040" and .050" only. Standard lead times, which may be longer, apply for 22 ga. and .063".

Protective film must be removed immediately. Please note this chart is only a representation of color options. Color matches should only be made with actual samples. Please call or write for actual metal sample(s).

Metal-Era receives metal through multiple vendors. If a specific metal vendor is required for a project, please specify this at the time of order.

These color reproductions are as accurate as modern printing technology will permit and may vary slightly from actual colors supplied. Finished color chip samples are available upon request. Customer is responsible for color selections chosen from printed literature.

Kynar 500® based fluropolymer coating is a high-grade architectural finish offering excellent resistance to degradation caused by nature's elements and airborne contaminants. A limited thirty (30) year warranty is available on the prefinished coil-coated steel and aluminum colors shown.

A limited ten (10) year warranty is included for post-painted Kynar®-coated aluminum applications unless otherwise stated. A twenty (20) year warranty is also available only upon request at the time of order. Restrictions may apply; consult a sales representative for specific information.

Standard anodized finishes that utilize a continuous coil anodizing process to provide excellent color consistency from piece to piece are available. However, shade variations may occur from coil batch to coil batch. Class I batch anodizing is also available.

Kynar 500® is a registered trademark of Arkema, Inc. Valspar is a registered trademark of Valspar Sourcing, Inc.

Due to product improvements and changes, we reserve the right to change or delete information herein without prior notice.

©2023. All statements made herein are based on performance and testing and are believed to be accurate and reliable. However, the statements are made without guarantee and warranty on our part. Statements concerning possible use of our products are made without knowledge of infringement of any valid patent. No warranty, express or implied, other than that described in this literature, is made or intended. Kynar 500® is a registered trademark belonging to Arkema Inc.