

SYSTEM DATA SHEET

PAREX® Armourwall MVS DM Stucco

Stucco Masonry Veneer System with Drainage Mat

PRODUCT DESCRIPTION

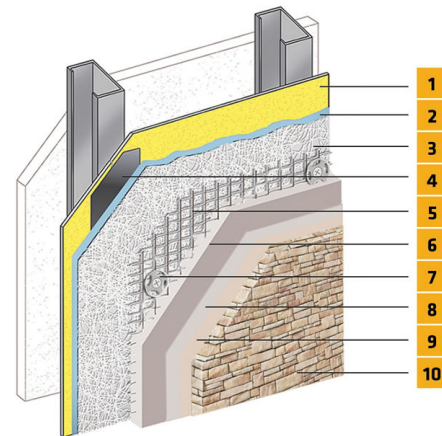
PAREX® Armourwall MVS DM Stucco is an enhanced water management, Portland cement-based, exterior stucco wall system. It incorporates Parex WeatherSeal Spray and Roll-On liquid applied air/ water-resistive barrier to provide a premium level of protection to the sheathing and cavity against moisture and air intrusion. The system features Parex Masonry Veneer Adhesive - a high-strength specially formulated setting bed mortar to adhere natural and manufactured stone, ceramic tile, and thin brick veneer.

USES

New or retrofit residential, institutional and commercial construction.

CHARACTERISTICS / ADVANTAGES

- For use on non-combustible construction types
- For use with fire resistance rated walls
- Air/Water Resistant Barrier



1. Acceptable Substrate*
2. Parex WeatherSeal
3. SikaWall Drainage Mat DF
4. SikaWall Joint Treatment
5. SikaWall Permalath 1000 or Metal Plaster Base*
6. SikaWall Stucco Base
7. Mechanical Fasteners*
8. Skim Coat of Parex Masonry Veneer Adhesive
9. Parex Masonry Veneer Adhesive
10. Adhered Veneer*

*By Others

SYSTEM INFORMATION

Compatibility

Material substitution will adversely affect system performance and will void all warranty coverage unless approved in writing by Sika Facades Technical Service Team.

APPLICATION INFORMATION

Substrates

Acceptable Substrates:

Glass mat gypsum sheathing
Gypsum sheathing
Exposure 1 OSB
Cement board sheathing
Concrete & Concrete Masonry
Exposure 1 Exterior Plywood

BASIS OF PRODUCT DATA

Results may differ based upon statistical variations depending upon mixing methods and equipment, temperature, application methods, test methods, actual site conditions and curing conditions.

AVAILABILITY/WARRANTY

Complies with IBC & IRC requirements for Exterior Insulation and Finish Systems (EIFS) and EIFS with Drainage.

LIMITATIONS

- **Users must read the most current Product Data Sheets for each system component before using any products and follow all application instructions and cautions.**
- Use only for above grade vertical walls. System must terminate a minimum of 4" (102 mm) above raw earth or 2" (51 mm) above paved surfaces.
- Additives are not permitted for any product unless approved in writing by Sika Facades Technical Service Team.
- All products must be installed at minimum 40 °F (4 °C) ambient and substrate temperatures unless otherwise noted on specific Product Data Sheets.
- Do not apply in ambient temperatures greater than 100 °F (38 °C) or to surface temperature above 120 °F (49 °C).
- Protect all work from precipitation for at least 24-hours after application and until dry.
- All substrates must be clean, dry and sound without planar irregularities greater than 1/4" per 10' (6 mm per 3 m).
- Per code veneer unit shall not exceed 2 5/8" (66.7 mm) in specified thickness, 36" (914 mm) in longest dimension or 5 ft² (0.46 m²) in total face area and shall not weigh more than 15 lbs/ft² (718 Pa).
- Maximum allowable deflection L/360, based on stud/structural properties only.
- Expansion joints are required in the system where they

exist in the substrate, where the system adjoins dissimilar construction, at changes in substrates and at floor lines in multilevel wood frame construction and where movement is anticipated, as determined by the project design team.

- Parex WeatherSeal Spray and Roll-On can be used behind all claddings where more than one wall system is specified, creating one continuous AWRB system. This is appropriate whenever Parex systems are used with other cladding types on a multi-clad building.
- The International Building Code and TMS 402/602 Building Code Requirements and Specification for Masonry Structures do not place a specific height limit on this application. However local building code may impose certain restrictions that would limit the height that the system can be placed. Consult the authority having jurisdiction (AHJ) for the project to ensure local requirements are satisfied.
- Contact Sika Facades' Technical Service Department at 1-800-226-2424 for additional information.

ENVIRONMENTAL, HEALTH AND SAFETY

For further information and advice regarding transportation, handling, storage and disposal of chemical products, user should refer to the actual Safety Data Sheets containing physical, environmental, toxicological and other safety related data. User must read the current actual Safety Data Sheets before using any products. In case of an emergency, call CHEMTREC at 1-800-424-9300, International 703-527-3887.

LEGAL DISCLAIMER

- KEEP CONTAINER TIGHTLY CLOSED
- KEEP OUT OF REACH OF CHILDREN
- NOT FOR INTERNAL CONSUMPTION
- FOR INDUSTRIAL USE ONLY
- FOR PROFESSIONAL USE ONLY

Prior to each use of any product of Sika Corporation, its

subsidiaries or affiliates ("SIKA"), the user must always read and follow the warnings and instructions on the product's most current product label, Product Data Sheet and Safety Data Sheet which are available at usa.sika.com or by calling SIKA's Technical Service Department at 1-800-933-7452. Nothing contained in any SIKA literature or materials relieves the user of the obligation to read and follow the warnings and instructions for each SIKA product as set forth in the current product label, Product Data Sheet and Safety Data Sheet prior to use of the SIKA product.

SIKA warrants this product for one year from date of installation to be free from manufacturing defects and to meet the technical properties on the current Product Data Sheet if used as directed within the product's shelf life. User determines suitability of product for intended use and assumes all risks. User's and/or buyer's sole remedy shall be limited to the purchase price or replacement of this product exclusive of any labor costs. **NO OTHER WARRANTIES EXPRESS OR IMPLIED SHALL APPLY INCLUDING ANY WARRANTY OF MERCHANTABILITY OR FITNESS FOR A PARTICULAR PURPOSE. SIKA SHALL NOT BE LIABLE UNDER ANY LEGAL THEORY FOR SPECIAL OR CONSEQUENTIAL DAMAGES. SIKA SHALL NOT BE RESPONSIBLE FOR THE USE OF THIS PRODUCT IN A MANNER TO INFRINGE ON ANY PATENT OR ANY OTHER INTELLECTUAL PROPERTY RIGHTS HELD BY OTHERS.**

Sale of SIKA products are subject to the Terms and Conditions of Sale which are available at <https://usa.sika.com/en/group/SikaCorp/termsandconditions.html> or by calling 1-800-933-7452.

Users must read the most current Product Data Sheets for each system component before using any products and follow all application instructions and cautions. SIKA warrants this product for one year from date of installation to be free from manufacturing defects and to meet the technical properties on the current Product Data Sheet if used as directed within the product's shelf life. User determines suitability of product for intended use and assumes all risks. User's and/or buyer's sole remedy shall be limited to the purchase price or replacement of this product exclusive of any labor costs. **NO OTHER WARRANTIES EXPRESS OR IMPLIED SHALL APPLY INCLUDING ANY WARRANTY OF MERCHANTABILITY OR FITNESS FOR A PARTICULAR PURPOSE. SIKA SHALL NOT BE LIABLE UNDER ANY LEGAL THEORY FOR SPECIAL OR CONSEQUENTIAL DAMAGES. SIKA SHALL NOT BE RESPONSIBLE FOR THE USE OF THIS**

Sika Corporation

201 Polito Avenue
Lyndhurst, NJ 07071
Phone: +1-800-933-7452
Fax: +1-201-933-6225
usa.sika.com



System Data Sheet

PAREX® Armourwall MVS DM Stucco
June 2025, Version 01.01
021830950000242581

PRODUCT IN A MANNER TO INFRINGE ON ANY PATENT OR ANY OTHER INTELLECTUAL PROPERTY RIGHTS HELD BY OTHERS. Sale of SIKA products are subject to the Terms and Conditions of Sale which are available at usa.sika.com.

PAREXArmourwallMVS DMStucco-en-US-(06-2025)-1-1.pdf

