

SYSTEM DATA SHEET

PAREX® Extra

CI Weather Barrier Design

PRODUCT DESCRIPTION

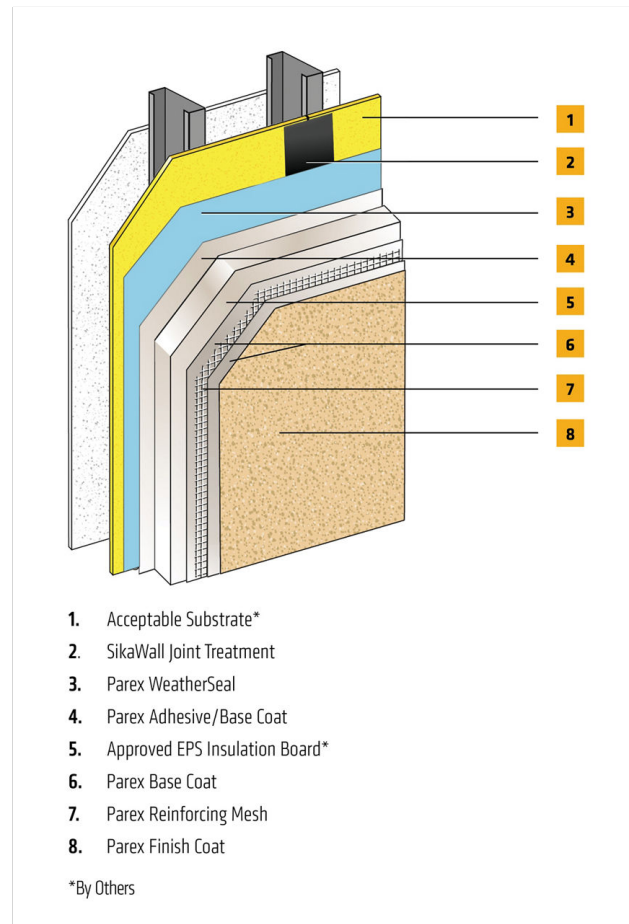
PAREX® Extra is an enhanced Class PB EIFS that includes a secondary air/water-resistive barrier for the protection of moisture sensitive sheathings. The system offers design flexibility, aesthetic appeal and energy savings.

USES

For exterior walls in new and retrofit commercial and institutional projects when additional moisture protection of the sheathing without drainage is desired.

CHARACTERISTICS / ADVANTAGES

- For use with Non-combustible construction types
- For Use on Fire resistance rated walls
- Continuous Insulation
- Unlimited building height



SYSTEM INFORMATION

Compatibility

Material substitution will adversely affect system performance and will void all warranty coverage unless approved in writing by Sika Facades Technical Service Team.

APPLICATION INFORMATION

Substrates

Acceptable Substrates:

Glass mat Gypsum Sheathing
Gypsum Sheathing
Exposure 1 OSB
Cement Fiber Sheathing
Concrete & Concrete Masonry
Exposre 1 exterior grade plywood

BASIS OF PRODUCT DATA

Results may differ based upon statistical variations depending upon mixing methods and equipment, temperature, application methods, test methods, actual site conditions and curing conditions.

AVAILABILITY/WARRANTY

Complies with IBC & IRC requirements for Exterior Insulation and Finish Systems (EIFS) and EIFS with Drainage.

LIMITATIONS

- **Users must read the most current Product Data Sheets for each system component before using any products and follow all application instructions and cautions.**
- Expansion Joints are required where movement is anticipated (e.g., floor lines, canopies, carports, porte-cocheres, etc.), where EIFS meets dissimilar materials (e.g., windows, doors, transitions to brick or other siding), where substrate materials change, at floor lines in wood frame construction where movement or cross grain shrinkage is anticipated and at structural or existing expansion joints.
- Expansion joint size and location per design as required for structural movement.
- Minimum slope: 1:2 with maximum width of 30.5 cm (12") [e.g. 15 cm in 30.5 cm (6" in 12") width].
- Maximum substrate design deflection is L/240.
- Consult the framing and sheathing manufacturer for design and application considerations.
- Use only for above grade vertical walls.
- Use SikaWall Strong 15 or Ultra HI 20 Reinforcing Mesh at ground floor and on other locations where high traffic is expected.
- Contact Sika Facades' Technical Service Department at 1-800-226-2424 for additional information.

ENVIRONMENTAL, HEALTH AND SAFETY

For further information and advice regarding transportation, handling, storage and disposal of chemical products, user should refer to the actual Safety Data Sheets containing physical, environmental, toxicological and other safety related data. User must read the current actual Safety Data Sheets before using any products. In case of an emergency, call CHEMTREC at 1-800-424-9300, International 703-527-3887.

LEGAL DISCLAIMER

- KEEP CONTAINER TIGHTLY CLOSED
- KEEP OUT OF REACH OF CHILDREN
- NOT FOR INTERNAL CONSUMPTION
- FOR INDUSTRIAL USE ONLY
- FOR PROFESSIONAL USE ONLY

Prior to each use of any product of Sika Corporation, its subsidiaries or affiliates ("SIKA"), the user must always read and follow the warnings and instructions on the product's most current product label, Product Data Sheet and Safety Data Sheet which are available at usa.sika.com or by calling SIKA's Technical Service Department at 1-800-933-7452. Nothing contained in any SIKA literature or materials relieves the user of the obligation to read and follow the warnings and instructions for each SIKA product as set forth in the current product label, Product Data Sheet and Safety Data Sheet prior to use of the SIKA product.

SIKA warrants this product for one year from date of installation to be free from manufacturing defects and to meet the technical properties on the current Product Data Sheet if used as directed within the product's shelf life. User determines suitability of product for intended use and assumes all risks. User's and/or buyer's sole remedy shall be limited to the purchase price or replacement of this product exclusive of any labor costs. **NO OTHER WARRANTIES EXPRESS OR IMPLIED SHALL**

System Data Sheet

PAREX® Extra

May 2025, Version 01.01

021830950000242571

APPLY INCLUDING ANY WARRANTY OF MERCHANTABILITY OR FITNESS FOR A PARTICULAR PURPOSE. SIKA SHALL NOT BE LIABLE UNDER ANY LEGAL THEORY FOR SPECIAL OR CONSEQUENTIAL DAMAGES. SIKA SHALL NOT BE RESPONSIBLE FOR THE USE OF THIS PRODUCT IN A MANNER TO INFRINGE ON ANY PATENT OR ANY OTHER INTELLECTUAL PROPERTY RIGHTS HELD BY OTHERS.

Sale of SIKA products are subject to the Terms and Conditions of Sale which are available at <https://usa.sika.com/en/group/SikaCorp/termsandconditions.html> or by calling 1-800-933-7452.

SIKA warrants this product for one year from date of installation to be free from manufacturing defects and to meet the technical properties on the current Product Data Sheet if used as directed within the product's shelf life. User determines suitability of product for intended use and assumes all risks. User's and/or buyer's sole remedy shall be limited to the purchase price or replacement of this product exclusive of any labor costs. NO OTHER WARRANTIES EXPRESS OR IMPLIED SHALL APPLY INCLUDING ANY WARRANTY OF MERCHANTABILITY OR FITNESS FOR A PARTICULAR PURPOSE. SIKA SHALL NOT BE LIABLE UNDER ANY LEGAL THEORY FOR SPECIAL OR CONSEQUENTIAL DAMAGES. SIKA SHALL NOT BE RESPONSIBLE FOR THE USE OF THIS PRODUCT IN A MANNER TO INFRINGE ON ANY PATENT OR ANY OTHER INTELLECTUAL PROPERTY RIGHTS HELD BY OTHERS. Sale of SIKA products are subject to the Terms and Conditions of Sale which are available at usa.sika.com.

Sika Corporation

201 Polito Avenue
Lyndhurst, NJ 07071
Phone: +1-800-933-7452
Fax: +1-201-933-6225
usa.sika.com



System Data Sheet

PAREX® Extra
May 2025, Version 01.01
021830950000242571

PAREXExtra-en-US-(05-2025)-1-1.pdf

