



FLOOR COVERING INSTALLATION MATERIALS

MOISTURE MITIGATION, SUBFLOOR
PREPARATION, FLOORING ADHESIVES

PRODUCT GUIDE



BUILDING TRUST



RELIABLE SYSTEMS MAKE A DIFFERENCE

Time and again it has been proven that the quality of subfloor and the choice of the correct adhesive make all the difference. System selection dictates the end result. Projects easily become something to forget or something to showcase and make you proud! Sika® Secure System plays a critical role in the final appearance and service life of your installed floor.

Sika® is a world renowned market leader in cement, epoxy and polyurethane chemistry, rising above the competition. System solutions offered by Sika® include moisture barriers, self-leveling cementitious underlayment, and wood floor adhesives that have been proven in both refurbishment and new construction projects in commercial and residential construction.

SIKA® ICON CLASSIFICATION LEGEND

To help choose the best solution for your projects, Sika® has developed a classification system to define the performance and the features of each product. These icons help differ between products regarding curing speed, strength, special features and much more. Use this icon legend throughout this brochure for a better understanding of the products Sika® has to offer.



Depth



Flow



Speed



Strength



Smoothness



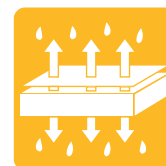
**Porous
Substrates**



**Non-porous
Substrates**



**Moisture
Barrier**



**MVER*
Tolerable**



Baseline



**Interior &
Exterior**



Ramp/Slope



Elongation



**Sound
Reduction**

*MVER: Moisture Vapor Emissions Rate

SIKALEVEL® PRIMERS

SikaLevel® primers can be used on a wide range of substrates before the application of Sika® self-leveling cementitious products. These primers can reduce the absorbency of the substrates and improve the adhesion between the underlayment and the substrate.

NOTES

SikaLevel®-01 Primer Plus



Primer for porous substrates. Reduces absorbency of the substrate

- Broom applied
- Reduces pinholes
- 10 minute dry time on concrete
- Can be diluted with water



Porous Substrates

Color: White
Tools: Broom or brush

Coverage: 600-1000 sq.ft. dilution 1:3

Packaging: 1 US. gal. jug



SikaLevel®-02 EZ Primer



Primer for non-porous substrates. Provides optimum adhesion on tight substrates

- Nap roller applied
- Good skid resistant properties
- Short waiting time
- No dilution required



Non-Porous Substrates

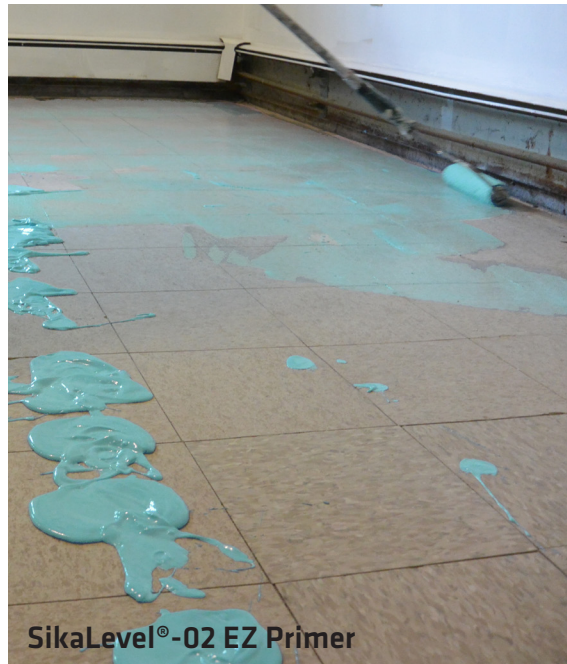
Color: Mint
Tools: Nap roller

Coverage: 350 - 500 sq.ft.

Packaging: 1 US. gal. pail



SikaLevel®-01 Primer Plus



SikaLevel®-02 EZ Primer

SIKALEVEL® - UNDERLAYMENTS



SikaLevel®-125

Durable self-leveling underlayment

- Economical
- Levels new and old floors

Coverage: 21 sq.ft. at 1/4" per bag

Packaging: 50 lb. bags



SikaLevel®-325

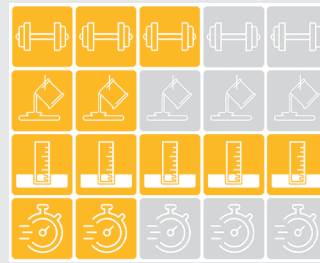
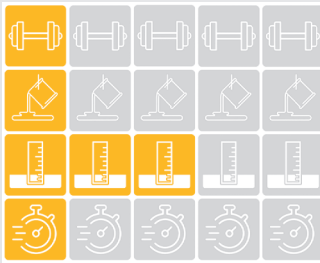
High performance self-leveling underlayment

- Interior & exterior use
- Deep pour
- High strength

Coverage: 26 sq.ft. at 1/4" per bag

Packaging: 55 lb. bags

NOTES



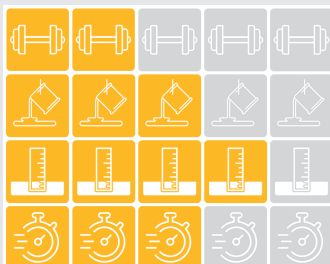
SikaLevel®-225

Premium self-leveling underlayment

- Superior flow
- Long workability
- Quick turnaround

Coverage: 28 sq.ft. at 1/4" per bag

Packaging: 55 lb. bags



Application Thickness

	Application Thickness		
	Minimum	Maximum	With Aggregate
SikaLevel®-125	1/8"	1"	2"
SikaLevel®-225	1/16"	2"	3"
SikaLevel®-325	1/8"	3"	4"

Floor Covering Times

Compressive Strength

	Floor Covering Times		Compressive Strength
	Non Moisture Sensitive	Moisture Sensitive	28 Days
SikaLevel®-125	2 - 3 hours	1 - 3 days	4,000 psi
SikaLevel®-225	3 hours	16 hours	4,500 psi
SikaLevel®-325	4 hours	24 hours	5,300 psi

SPECIALTY WOOD FLOOR ADHESIVES



SikaBond®-T21

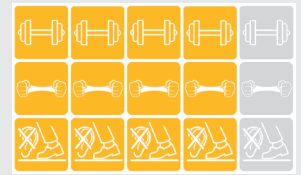
All-in-One, Sound Control, Moisture Barrier Wood Flooring Urethane Adhesive

- Elongation: 270%
- Tensile Strength: 150 psi at 73°F and 50% RH
- Unlimited subfloor moisture vapor protection

Coverage: All-in-One: 30 - 35 sq.ft./gal. **Adhesive Only:** 45 - 50 sq.ft./gal.

Packaging: 4 US. gal. pails

Sound Ratings: ΔIIC: 21, **STC:** 63



SikaBond®-T100

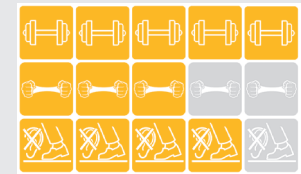
All-in-One Hybrid, Sound Control, Moisture Barrier Wood Flooring Adhesive

- Elongation: 150%
- Tensile Strength: 150 psi at 73°F and 50% RH
- Unlimited subfloor moisture vapor protection
- Easily cleans off prefinished floors before and after cure

Coverage: All-in-One: 30 - 35 sq.ft./gal. **Adhesive Only:** 45 - 50 sq.ft./gal.

Packaging: 4 US. gal. pails

Sound Ratings: ΔIIC: 21, **STC:** 62, **IIC:** 67



SikaBond®-7700

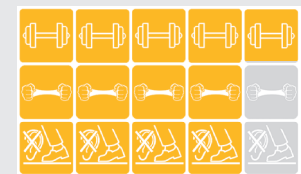
All-in-One Hybrid, Sound Control, Moisture Barrier Wood Flooring Adhesive

- Elongation: ~125%
- Moisture control up to 15 lbs./90% RH
- Tensile Strength: 150 psi at 73°F and 50% RH
- Easily cleans off prefinished floors before and after cure

Coverage: All-in-One: 30 - 35 sq.ft./gal. **Adhesive Only:** 45 - 50 sq.ft./gal.

Packaging: 4 US. gal. pails

Sound Ratings: IIC: 74, **STC:** 62



SikaBond® T-85

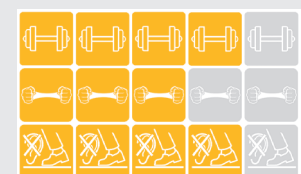
All-in-One Hybrid, Sound Control, Moisture Barrier Wood Flooring Adhesive

- Elongation: ~100%
- Moisture control up to 12 lbs./85% RH
- Tensile Strength: 150 psi at 73°F and 50% RH
- Easy spread formula with excellent ridge retention

Coverage: All-in-One: 30 - 35 sq.ft./gal. **Adhesive Only:** 45 - 50 sq.ft./gal.

Packaging: 4 US. gal. pails

Sound Ratings: ΔIIC: 21, **STC:** 63



Application Guide

Product	Limitations for Moisture Control Application	Adhesive Only		Moisture Protection: 100% coverage is required		Provides Sound Control
		Engineered Wood Width	Solid Wood Width	Engineered Wood Width	Solid Wood Width	
SikaBond®-T21	Unlimited	No width limit	8"	No width limit	8"	Y
SikaBond®-T55	15# CC, 90% RH	No width limit	No Width limit	No width limit	8"	N
SikaBond®-T35	15# CC, 90% RH	No width limit	8"	No width limit	8"	N
SikaBond®-T25	12# CC, 87% RH	No width limit	5"	No width limit	5"	N
SikaBond®-T17	8# CC, 85% RH	No width limit	5"	No width limit	5"	N
SikaBond®-T100	Unlimited	No width limit	8"	No width limit	8"	Y
SikaBond®-7700	15# CC, 90% RH	No width limit	8"	No width limit	8"	Y
SikaBond® T-85	12# CC, 85% RH	No width limit	5"	No width limit	5"	Y
SikaBond®-6200	-	5"	-	-	-	N
Sika® AcouBond® System	-	No width limit	No Width limit	-	-	Y

ACCESSORIES

Sikaflex® 11FC

Glue assist polyurethane adhesive

- Use to assist with nailing of flooring 5" and wider
- Apply using Cordon System or Serpentine System
- Highly elastic
- High strength durable adhesion



10.1 fl. oz. cartridge	Seals 12.4 lineal ft. of 1/2 x 1/4 in. bead
20 fl. oz. sausage	Seals 25 lineal ft. of 1/2 x 1/4 in. bead



SikaBond® -910

One-component, moisture cured, elastomeric polyurethane adhesive

- Versatile superior adhesion
- Remains permanently elastic
- Waterproof after cure



10.1 fl. oz. cartridge	Seals 12.4 lineal ft. of 1/2 x 1/4 in. bead
20 fl. oz. sausage	Seals 24 lineal ft. of 1/2 x 1/4 in. bead
29 fl. oz. cartridge	Seals 35 lineal ft. of 1/2 x 1/4 in. bead



SikaBond® -948 Low VOC

High-strength, high-solids polyurethane adhesive

- High green grab formula
- 1-2 hour firm set and quick dry capabilities
- Achieves a permanent overnight bond
- Low VOC and low odor



Packaging:
10 oz cartridges (24 per case);
29 oz cartridges (12 per case)



NOTES

SikaBond® -900

Tongue & groove flooring adhesive

- Use for all types of laminate and floating wood floors
- Quick drying
- Easy clean up when wet
- Passes type II water resistance



16 fl. oz. bottle 100-150 lineal ft.



SikaBond® Remover

Fast drying solvent cleaner

- Ideal for SikaBond® urethane adhesives even after curing
- Does not leave "ghosting" on wood floor finish
- Leaves no residue
- Low odor

Packaging: 1 pint bottles; 12 per case



Application Tools

Manual drive and pneumatic caulk guns for dispensing 20 oz. adhesive sausages



Flooring trowels for successful application of flooring adhesives

- **P5 Trowel:** Adhesive Only Applications (45-50 sq.ft./gal.)
- **SC+MB Trowel:** All-in-One Applications (30-35 sq.ft./gal.)
- **TR-2:** Flat V Notch (60 sq. ft./gal.)
- **TR-10:** V Notch (30-35 sq. ft./gal.)
- **TR-11:** V Notch (30 sq. ft./gal.)

WARRANTY

Product Category	Product Name	Carpet, Sheet Vinyl, LVT & Wood Floors
Moisture Barriers	Sika® MB Sika® MB EZ Rapid	<p style="text-align: center;">Equal to the Floor Covering Manufacturer's Warranty Period</p>
Primers	SikaLevel®-01 Primer Plus SikaLevel®-02 EZ Primer	
Self Leveling Compounds	SikaLevel® SkimCoat SikaLevel®-025 Patch SikaLevel®-125 SikaLevel®-225 SikaLevel®-325	
Flooring Adhesives	SikaBond®-5900, SikaBond®-5800, SikaBond®-5700 SikaBond®-6000 Sika® AcouBond® System SikaBond®-6200 SikaBond®-T17 SikaBond®-T21 SikaBond®-T25 SikaBond®-7700, SikaBond®-T-85 SikaBond®-T55, SikaBond®-T35 SikaBond®-T100	
Sound Abatement	Sika® Acoubond® System	

WHAT DOES THE SIKA SECURE WARRANTY COVER?

Labor and Materials are covered by the Sika® Secure Warranty. To get the benefit of a Sika® Limited Material and Labor Warranty you must first fulfill the warranty application requirements.

In the event of a valid claim under this Warranty, Sika® in its discretion will either pay the reasonable cost of labor and materials to repair or replace on a square foot basis the portion of the floor proven to be defective due to a defect in the Sika® Product(s) subject to exclusions as set in the Warranty. Sika® will repair or replace the affected floor one time only. Any repairs made prior to Sika® evaluating the claim will void this Warranty. Please contact your local Sika® Sales Representative for more information and warranty requirements.

HOW ARE THE TERMS OF THE “SIKA SECURE WARRANTY” DEFINED?

The Sika® Secure Warranty length is defined as a period of time equal to the flooring manufacturer's warranty period.

If no flooring manufacturer's warranty applies, “Sika Secure Warranty” is defined as a period of time not to exceed **25 years for wood floors or other floor covering systems**.

PRODUCT SELECTION CHART

	Product	Description	Floor Coverings								
			Engineered Wood	Solid Shorts	Solid Wood	Ceramic Tile	Vinyl Tile (VCT, LVT, etc.)	Cork/Rubber Underlay-ment	Floating Floors	Residential Carpet Pad	Linoleum
Moisture Barriers & Primers	Sika® MB	Moisture barrier, substrate consolidator and adhesion promoter two-component epoxy	■	■	■	■	■	■	■	■	■
	Sika® MB EZ Rapid	One-component, rapid-drying, polyurethane resin, moisture mitigation system and substrate solidifier	■	■	■	■	■	■	■	■	■
	SikaLevel®-01 Primer Plus	Primer for porous substrates & protection against moisture from leveling compounds	■	■	■	■	■	■	■	■	■
	SikaLevel®-02 EZ Primer	Primer for non-porous substrates. Provides optimum adhesion on tight substrates	■	■	■	■	■	■	■	■	■
Self Leveling Underlayers & Patches	SikaLevel®-125	Durable, cementitious, self-leveling underlayment	■	■	■	■	■	■	■	■	■
	SikaLevel®-225	Superior flow, cementitious, self-leveling underlayment	■	■	■	■	■	■	■	■	■
	SikaLevel®-325	High strength, cementitious, self-leveling underlayment	■	■	■	■	■	■	■	■	■
	SikaLevel®-025 Patch	Rapid Setting Cement-based Patching Compound from feather edge up to 1/2"	■	■	■	■	■	■	■	■	■
	SikaLevel® SkimCoat	Fast Setting Cement-based Patching Compound from feather edge up to 1/2"	■	■	■	■	■	■	■	■	■
Adhesives	SikaBond®-T55	High elongation polyurethane adhesive for solids and dimensionally unstable woods	■	■	■			■			
	SikaBond®-T35	Trowel grade highly elastic polyurethane adhesive	■	■	■			■			
	SikaBond®-T25	Trowel grade easy to use polyurethane adhesive	■	■	■			■			
	SikaBond®-T17	Economical, polyurethane engineered wood flooring adhesive	■	■	■			■			
	SikaBond®-T21	All-in-one polyurethane adhesive for moisture and sound protection	■	■	■			■			
	SikaBond®-T100; SikaBond®-7700; SikaBond® T-85	All-in-One hybrid polyurethane, sound control, moisture barrier wood flooring adhesive	■	■	■			■			
	SikaBond®-6200	Pressure sensitive wood flooring adhesive	■	■	■			■			
	SikaBond®-5900; SikaBond®-5800; SikaBond®-5700;	Pressure sensitive resilient flooring adhesive					■	■		■	■
	SikaBond®-6000	Premium universal firm-set acrylic resilient flooring adhesive					■	■		■	■
	Sika® Acoubond® System	Elastic bonding and acoustical dampening for wood floors	■	■	■						

Always refer to flooring manufacturer's recommendations and technical guidelines if substrate unknown. Mock-ups for bond and compatibility test are required.

Substrates											Advantages	
Concrete	Gypsum	Self Leveler + Patching	Plywood	Quarry Tiles	Vinyl Tile (VCT, LVT, etc.)	Asphaltic Cutback	Adhesive Residues	Terrazzo	Radiant Heat	Rubber Underlayment	Moisture Protection	Sound Reduction
■	■	■	■	■	■	■**	■**	■*	■		■	
■	■	■	■	■	■	■*	■*	■*	■		■	
■	■	■							■			
■			■	■	■		■	■	■			
■*	■*	■*	■*	■*	■*	■*or*	■*or*	■*	■*			
■*	■*	■*	■*	■*	■*	■*or*	■*or*	■*	■*			
■*	■*	■*	■*	■*	■*	■*or*	■*or*	■*	■*			
■	■*	■	■	■	■*	■*	■*	■	■			
■	■*	■	■	■	■*	■*	■*	■	■			
■	■*	■	■	■*	■**	■*	■*	■*	■	■		
■	■*	■	■	■*	■**	■*	■*	■*	■	■	■	
■	■*	■	■	■*	■**	■*	■*	■*	■	■	■	
■	■*	■	■	■*	■**	■*	■*	■*	■	■	■	
■	■*	■	■	■*	■**	■*	■*	■*	■	■	■	
■	■	■	■	■*	■**	■*	■*	■*	■	■	■	
■	■	■	■	■*	■**	■*	■*	■*	■	■	■	
■	■*	■	■	■*	■**	■*	■*	■*	■	■		■

*Sika® MB, MB Redline & MB EZ Rapid

*Sika® Level-01 Primer Plus

*Sika® Level-02 EZ Primer

*Sika Level Underlayments

*Mechanically Prepared

*Embossed

*Must have 50% of old material removed

*Water-Resistant

SIKA SECURE

MAKE YOUR FLOOR SIKA SECURE

For more information, contact Sika: Phone: 1-800-933-SIKA (Nationwide), Website: www.sikasecure.com



Our most current General Sales Conditions shall apply. Please consult the Product Data Sheets prior to any use and processing.

SIKA CORPORATION
201 Polito Avenue
Lyndhurst, NJ 07071
Phone: 201-933-8800
Fax: 201-933-6225

SIKA CANADA INC.
601 Delmar Avenue
Pointe Claire
Quebec H9R 4A9
Phone: 514-697-2610
Fax: 514-694-2792

SIKA MEXICANA S.A. DE C.V.
Carretera Libre Celaya Km. 8.5
Fracc. Industrial Balvanera
Corregidora, Queretaro
C.P. 76920
Phone: 52 442 2385800
Fax: 52 442 2250537

BUILDING TRUST

