

SenerPanel Channeled Adhesive CI Design with SikaWall-1000 MaxGrip Veneer Adhesive

An exterior cladding system with a continuous Senershield air/water-resistive barrier and insulation, featuring SikaWall -1000 MaxGrip Veneer Adhesive, a high-strength, specially formulated setting bed mortar used to adhere natural and manufactured stone, tile, and thin brick veneer.

SYSTEM DESCRIPTION

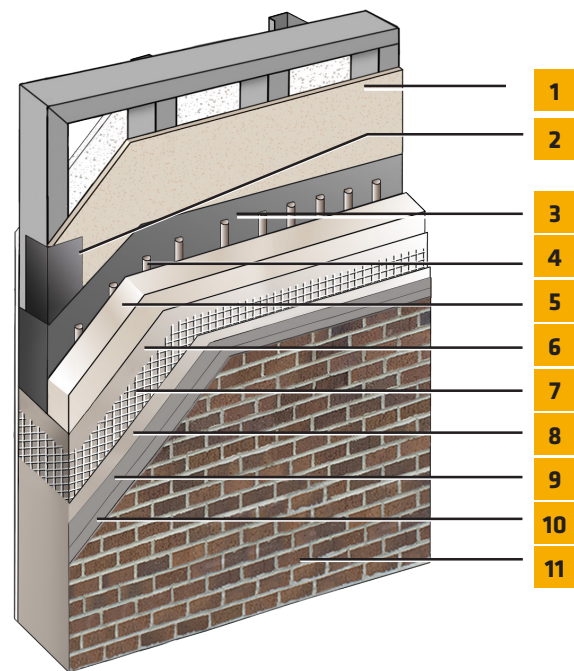
SenerPanel Channeled Adhesive CI Design with SikaWall-1000 MaxGrip Veneer Adhesive is a continuously insulated drainage wall cladding system. It features a Senershield fluid-applied air/water-resistive barrier, moisture drainage, continuous exterior insulation up to R15 (4" Type I EPS), and MaxGrip Veneer Adhesive used to adhere natural and manufactured stone, tile, and thin brick veneer.

USES

SenerPanel Channeled Adhesive CI Design with SikaWall-1000 MaxGrip Veneer Adhesive may be used in fire-resistance-rated construction and in any construction type (IBC Types I through V), when installed in accordance with Sika Facades system instructions.

ACCEPTABLE SUBSTRATES

Poured concrete/unit masonry; ASTM C1177 type sheathings, including DensGlass™ exterior sheathing, DensElement (sheathing only), eXP™ sheathing, GlasRoc® sheathing, Securock™ glass-mat sheathing, Weather Defense™ Platinum sheathing, GreenGlass® sheathing; cement-boards (ASTM C1325 Type A Exterior) including PermaBase™ cement-board; untreated Exposure I or exterior plywood sheathing (grade C-D or better); untreated Exposure I OSB, Huber Zip (sheathing only); Fire Treated wood sheathing: Pyro-Guard® and Dricon® plywood and FlameBlock® OSB; gypsum sheathing (ASTM C79/ASTM C1396).



1. Acceptable substrates*
2. Approved SikaWall Joint Treatment: MaxFlash, Sheathing Fabric or Flash Seal NP
3. Senershield-R/-RS/-VB
4. Senergy Adhesive /Base Coat
5. Approved EPS Insulation Board*
6. Senergy Base Coat
7. SikaWall Intermediate 12 Reinforcing Mesh
8. Senergy Base Coat
9. Skim Coat of SikaWall MaxGrip Veneer Adhesive
10. SikaWall-1000 MaxGrip Veneer Adhesive
11. Adhered Veneer*

*(By Other)

SenerPanel Channeled Adhesive CI Design with MaxGrip Veneer Adhesive

CODE COMPLIANCE	
Document	Code Description
ICC-ESR 1878	Complies with IBC and IRC
ASTM E2568 / AC 235	Complies with requirements
ASTM E119	Meets requirements for use on fire-resistance rated construction. Does not detract from fire rating of base wall
NFPA 285 and 268	Meets requirements for use on fire-resistance-rated construction and in any construction type, including IBC Types through V
ICC-ESR 2986 (Senershield-R/-RS)	Complies with IBC, IRC and IECC as an Air/water-resistive barrier*
Air Barrier Association of America recognized (Senershield-R/-RS/-VB)	Can be used on projects where ABAA recognized air barriers are specified

For testing results, please reference Senerflex Channeled Adhesive CI Design with MaxGrip specification

*Senershield-R/-RS/-VB can be used behind all claddings where more than one wall system is specified, creating one continuous AWRB system. This is appropriate whenever Senergy Channeled Adhesive CI Design with MaxGrip Veneer Adhesive is used with other cladding types on a multi-clad building.

MATERIAL SUBSTITUTION

Material substitution will adversely affect system performance and will void all warranty coverage unless approved in writing by Sika Facades Technical Service Team.

DESIGN CONSIDERATIONS

- Use only for above grade vertical walls. Not for use below grade or on surfaces subject to continuous or intermittent immersion in water or hydrostatic pressure. System must terminate a minimum of 6" (152 mm) above grade.
- The International Building Code and TMS 402/602 Building Code Requirements and Specifications for Masonry Structures do not place a specific height limit on this application. However local building code may impose certain restrictions that would limit the height that the system can be placed. Consult the authority having jurisdiction (AHJ) for the project to ensure local requirements are satisfied.
- Per code veneer unit shall not exceed 2 5/8" (66.7 mm) in specified thickness, 36" (914 mm) in longest dimension not more than 5 ft² (0.46 m²) in total face area and shall not weigh more than 15 lbs/ft² (718 Pa).
- All substrates must be clean, dry and sound without planar irregularities greater than 1/4" per 10' (6 mm per 3 m).
- Substrate deflection should be limited based on recommendations of the veneer manufacturer or local building codes but in no case shall deflection exceed L/360 under positive and negative design wind loads.
- The use of dark color veneer must be considered in relation to wall surface temperature as a function of local climate conditions. Dark brick, stone and tile colors with LRV (Light Reflective Value) of less than 20% are not recommended based on EPS service temperature limitation of 165°F (74 °C).

WARRANTY

Prior to each use of any product of Sika Corporation, its subsidiaries or affiliates ("SIKA"), the user must always read and follow the warnings and instructions on the product's most current product label, Product Data Sheet and Safety Data Sheet which are available at usa.sika.com/senergy or by calling SIKA Facades' Technical Service Department at 1-800-589-1336. Nothing contained in any SIKA literature or materials relieves the user of the obligation to read and follow the warnings and instructions for each SIKA product as set forth in the current product label, Product Data Sheet and Safety Data Sheet prior to use of the SIKA product.

SIKA warrants this product for one year from date of installation to be free from manufacturing defects and to meet the technical properties on the current Product Data Sheet if used as directed within the product's shelf life. User determines suitability of product for intended use and assumes all risks. User's and/or buyer's sole remedy shall be limited to the purchase price or replacement of this product exclusive of any labor costs. NO OTHER WARRANTIES EXPRESS OR IMPLIED SHALL APPLY INCLUDING ANY WARRANTY OF MERCHANTABILITY OR FITNESS FOR A PARTICULAR PURPOSE. SIKA SHALL NOT BE LIABLE UNDER ANY LEGAL THEORY FOR SPECIAL OR CONSEQUENTIAL DAMAGES. SIKA SHALL NOT BE RESPONSIBLE FOR THE USE OF THIS PRODUCT IN A MANNER TO INFRINGE ON ANY PATENT OR ANY OTHER INTELLECTUAL PROPERTY RIGHTS HELD BY OTHERS. Sale of SIKA products are subject to the Terms and Conditions of Sale which are available at usa.sika.com.

Sika Corporation

201 Polito Avenue
Lyndhurst, NJ 07071 USA
Customer Service +1 (800) 433-9517
Technical Service +1 (800) 589-1336
usa.sika.com/senergy

Rev December 2024

BUILDING TRUST

