

Pebbletex Adhered Mat Design

Water Drainage Exterior Insulation and Finish System incorporating an unobstructed drainage

SYSTEM DESCRIPTION

Pebbletex Adhered Mat Design is a water-drainage design Exterior Insulation and Finish System. The system offers design flexibility, aesthetic appeal and energy saving. Integrated system components include on air/water-resistive barrier, adhesive, EPS insulation board, reinforced base coat and 100% acrylic polymer finish.

The system features easy installation, proven durability and low maintenance.

USES

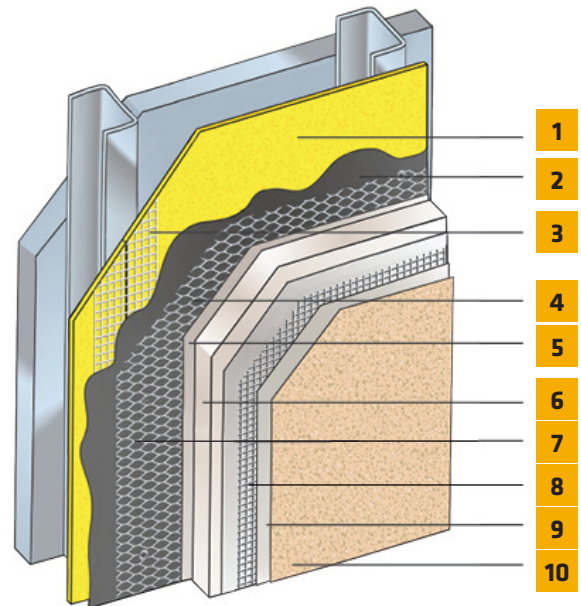
For exterior walls in new and retrofit commercial, institutional and residential construction that are not suitable for direct adhesive attachment or when a water-drainage design is needed, and where high wind-load capacity is a design consideration.

ACCEPTABLE SUBSTRATES

Poured concrete/unit masonry; ASTM C1177 type sheathings, including DensGlass™ exterior sheathing, DensElement (sheathing only), eXP™ sheathing, GlasRoc® sheathing, Securock™ glass-mat sheathing, Weather Defense™ Platinum sheathing, GreenGlass™ sheathing; cement-boards (ASTM C1325 Type A Exterior) including PermaBase™ cement-board; untreated Exposure I or exterior plywood sheathing (grade (-D or better); untreated Exposure I OSB, Huber Zip (sheathing only); Fire Treated wood sheathing; Pyro-Guard® and Dricon® plywood and FlameBlock® OSB; gypsum sheathing (ASTM C79/ASTM C1396).

ADVANTAGES

- Highest wind load capacity of all EIFS choices.
- Incorporates a monolithic secondary air/water-resistive barrier.
- Provides a drainage plane for directing incidental moisture out of the wall assembly.
- Seamless exterior blanket of insulation provides high R-values, lowers heating and cooling costs.
- Ability to achieve any architectural style with unlimited design option.
- Does not require control joints; flexible.
- Crack-, abrasion- and dirt-resistant finishes.
- Multiple options for impact resistance improve functional design, ease of maintenance.
- Wide selection of standard and custom colors, and finish texture.



1. Acceptable substrates*
2. Finestop RA/RS/VB
3. LaHabra Joint Reinforcement: SikaWall Sheathing Fabric embedded in Finestop RA/RS/VB, SikaWall MaxFlash or SikaWall Flash Seal NP
4. SikaWall Permalath 1000 or Metal Lath*
5. LaHabra Adhesive/Base Coat
6. Approved EPS Insulation Board*
7. Mechanical Fastener*
8. LaHabra Reinforcing Mesh
9. LaHabra Base Coat
10. LaHabra Finish Coat

*By Others

Pebbletex Adhered Mat Design

MATERIAL SUBSTITUTION

Material substitution will adversely affect system performance and will void all warranty coverage unless approved in writing Sika Facades.

DESIGN CONSIDERATIONS

- Use only for above grade vertical walls. Not for use below grade or on surfaces subject to continuous or intermittent immersion in water or hydrostatic pressure System must terminate a minimum of 6 inches above unfinished grade.
- Use SikaWall Strong 15 or Ultra HI 20 Reinforcing Mesh at ground floor and on other locations where high traffic is expected.
- All substrates must be clean, dry and sound without planar irregularities greater than 1/4" per 10' (6 mm per 3 m).

WARRANTY

Prior to each use of any product of Sika Corporation, its subsidiaries or affiliates ("SIKA"), the user must always read and follow the warnings and instructions on the product's most current product label, Product Data Sheet and Safety Data Sheet which are available at usa.sika.com/lahabra or by calling SIKAFacades' Technical Service Department at 1-800-589-1336. Nothing contained in any SIKALiterature or materials relieves the user of the obligation to read and follow the warnings and instructions for each SIKAPRODUCT as set forth in the current product label, Product Data Sheet and Safety Data Sheet prior to use of the SIKAPRODUCT.

SIKA warrants this product for one year from date of installation to be free from manufacturing defects and to meet the technical properties on the current Product Data Sheet if used as directed within the product's shelf life. User determines suitability of product for intended use and assumes all risks. User's and/or buyer's sole remedy shall be limited to the purchase price or replacement of this product exclusive of any labor costs. NO OTHER WARRANTIES EXPRESS OR IMPLIED SHALL APPLY INCLUDING ANY WARRANTY OF MERCHANTABILITY OR FITNESS FOR A PARTICULAR PURPOSE. SIKASHALL NOT BE LIABLE UNDER ANY LEGAL THEORY FOR SPECIAL OR CONSEQUENTIAL DAMAGES. SIKASHALL NOT BE RESPONSIBLE FOR THE USE OF THIS PRODUCT IN A MANNER TO INFRINGE ON ANY PATENT OR ANY OTHER INTELLECTUAL PROPERTY RIGHTS HELD BY OTHERS. Sale of SIKAPRODUCTS are subject to the Terms and Conditions of Sale which are available at usa.sika.com.

Sika Corporation

201 Polito Avenue
Lyndhurst, NJ 07071 USA
Customer Service +1 (800) 433-9517
Technical Service +1 (800) 589-1336
usa.sika.com/lahabra

Rev May 2024

BUILDING TRUST

