

SYSTEM DATA SHEET

PAREX® WaterMaster FB

CI Water-Drainage Exterior Wall Cladding Featuring Noncombustible Mineral Wool

PRODUCT DESCRIPTION

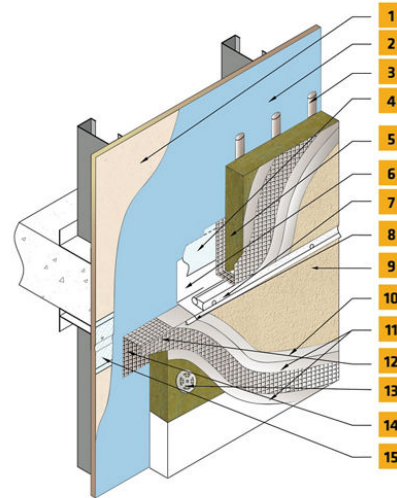
Parex WaterMaster FB is a drainage EIFS systems that incorporates fireblocking strips of mineral wool insulation board within and around EPS insulation board in one code compliant, water-drainage exterior cladding.

USES

May be used in fire-resistance-rated construction and in any construction type, including IBC Types I through V, when installed in accordance with system instructions. For use on above grade vertical walls. May be used to meet 2022 New York Building Code.

CHARACTERISTICS / ADVANTAGES

- Non-combustible construction types
- Fire resisted rated walls
- Higher R-value
- Continuous Insulation
- Unlimited Building Height



1. Acceptable Sheathing*
2. Parex Water-Resistive Air Barrier
3. Parex Adhesive
4. Parex Sheathing Joint Tape embedded in Parex Water-Resistive & Air Barrier Coating
5. ROCKWOOL Frontrock® Mineral Wool 8* Strip
6. Metal Flashing
7. Closed Cell Backer Rod & Elastomeric Sealant
8. Elastomeric Sealant
9. Parex Finish
10. Parex Primer (Optional)
11. Parex Basecoat
12. Parex Reinforcing Mesh embedded in Parex Basecoat
13. Parex Mineral Wool Fastener
14. Parex Mesh Backwrap
15. Parex Sheathing Joint Tape embedded in Parex Water-Resistive & Air Barrier Coating

*(By Others)

SYSTEM INFORMATION

Compatibility

Material substitution will adversely affect system performance and will void all warranty coverage unless approved in writing by Sika Facades Technical Service Team.

ROCKWOOL Frontrock™ dual-density board.

Density:

- Thickness 1.5-in. & 2-in.: 8.5 lbs/ft³
- Thickness > 2-in.: 9.3 lbs/ft³ outer layer and 5.9 lbs/ft³ inner layer.

System Performance

Document	Code Description
ICC-ESR 2562	Complies with IBC and IRC
ASTM E2568 / AC 235	Complies with requirements
ASTM E119	Does not detract from fire rating of base wall
ICC-ESR 2045	Air/water-resistive barrier*
NFPA 285/268	Meets requirements for use on fire-resistance-rated construction and in any construction type, including IBC Types I through V. Complies with 2022 New York City Building Code requirements.
ASTM E136	Insulation defined as noncombustible
ASTM C612	ROCKWOOL insulation is compliant for mineral fiber block and board thermal insulation

For testing results, please reference Parex WaterMaster FB specification.

* Parex Air Water Resistive Barrier can be used behind all claddings where more than one wall system is specified, creating one continuous AWRB system. This is appropriate whenever Parex WaterMaster FB is used with other cladding types on a multi-clad building.

APPLICATION INFORMATION

Substrates

Acceptable Substrates:

Glass mat Gypsum Sheathing
Gypsum Sheathing
Exposure 1 OSB
Cement Fiber Sheathing
Concrete & Concrete Masonry
CDX Plywood

BASIS OF PRODUCT DATA

Results may differ based upon statistical variations depending upon mixing methods and equipment, temperature, application methods, test methods, actual site conditions and curing conditions.

AVAILABILITY/WARRANTY

Complies with IBC & IRC requirements for Exterior Insulation and Finish Systems (EIFS) and EIFS with Drainage.

LIMITATIONS

- Users must read the most current Product Data Sheets for each system component before using any products and follow all application instructions and cautions.
- For use on above grade vertical walls. System must terminate a minimum of 6" (152 mm) above grade.
- Additives are not permitted for any product unless approved in writing by Sika Facades Technical Service Team.
- All products must be installed at minimum 40 °F (4 °C) ambient and substrate temperatures unless otherwise noted on specific Product Data Sheets.
- Protect all work from precipitation for at least 24-hours

- after application.
- This system is not designed for horizontal applications. Always maintain a minimum slope of 1:2 up to a maximum width of 12".
- All substrates must be clean, dry and sound without planar irregularities greater than 1/4" per 10' (6 mm per 3 m).
- Use SikaWall Strong 15 or Ultra HI 20 Reinforcing Mesh at ground floor and on other locations where high traffic is expected..
- Contact Sika Facades' Technical Service Department at 1-800-226-2424 for additional information.

ENVIRONMENTAL, HEALTH AND SAFETY

For further information and advice regarding transportation, handling, storage and disposal of chemical products, user should refer to the actual Safety Data Sheets containing physical, environmental, toxicological and other safety related data. User must read the current actual Safety Data Sheets before using any products. In case of an emergency, call CHEMTREC at 1-800-424-9300, International 703-527-3887.

LEGAL DISCLAIMER

- KEEP CONTAINER TIGHTLY CLOSED
- KEEP OUT OF REACH OF CHILDREN
- NOT FOR INTERNAL CONSUMPTION
- FOR INDUSTRIAL USE ONLY
- FOR PROFESSIONAL USE ONLY

Prior to each use of any product of Sika Corporation, its subsidiaries or affiliates ("SIKA"), the user must always read and follow the warnings and instructions on the product's most current product label, Product Data Sheet and Safety Data Sheet which are available at usa.sika.com or by calling SIKA's Technical Service Department at 1-800-933-7452. Nothing contained in any SIKA literature or materials relieves the user of the obligation to read and follow the warnings and instructions for each SIKA product as set forth in the current product label, Product Data Sheet and Safety Data Sheet prior to use of the SIKA product.

SIKA warrants this product for one year from date of installation to be free from manufacturing defects and to meet the technical properties on the current Product Data Sheet if used as directed within the product's shelf life. User determines suitability of product for intended use and assumes all risks. User's and/or buyer's sole remedy shall be limited to the purchase price or replacement of this product exclusive of any labor costs.

NO OTHER WARRANTIES EXPRESS OR IMPLIED SHALL APPLY INCLUDING ANY WARRANTY OF MERCHANTABILITY OR FITNESS FOR A PARTICULAR PURPOSE. SIKA SHALL NOT BE LIABLE UNDER ANY LEGAL THEORY FOR SPECIAL OR CONSEQUENTIAL DAMAGES. SIKA SHALL NOT BE RESPONSIBLE FOR THE USE OF THIS PRODUCT IN A MANNER TO INFRINGE ON ANY PATENT

OR ANY OTHER INTELLECTUAL PROPERTY RIGHTS HELD BY OTHERS.

Sale of SIKA products are subject to the Terms and Conditions of Sale which are available at <https://usa.sika.com/en/group/SikaCorp/termsandconditions.html> or by calling 1-800-933-7452.

SIKA warrants this product for one year from date of installation to be free from manufacturing defects and to meet the technical properties on the current Product Data Sheet if used as directed within the product's shelf life. User determines suitability of product for intended use and assumes all risks. User's and/or buyer's sole remedy shall be limited to the purchase price or replacement of this product exclusive of any labor costs. **NO OTHER WARRANTIES EXPRESS OR IMPLIED SHALL APPLY INCLUDING ANY WARRANTY OF MERCHANTABILITY OR FITNESS FOR A PARTICULAR PURPOSE. SIKA SHALL NOT BE LIABLE UNDER ANY LEGAL THEORY FOR SPECIAL OR CONSEQUENTIAL DAMAGES. SIKA SHALL NOT BE RESPONSIBLE FOR THE USE OF THIS PRODUCT IN A MANNER TO INFRINGE ON ANY PATENT OR ANY OTHER INTELLECTUAL PROPERTY RIGHTS HELD BY OTHERS.** Sale of SIKA products are subject to the Terms and Conditions of Sale which are available at usa.sika.com.



System Data Sheet
PAREX® WaterMaster FB
May 2025, Version 01.01
021830950000242764

PAREXWaterMasterFB-en-US-(05-2025)-1-1.pdf

